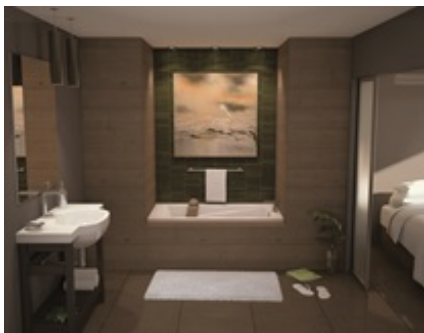


MAAX SUBMITTAL SPECIFICATIONS

Exhibit 6632 IF

MODEL NUMBER 106220

DIMENSIONS: 66" x 32" x 18" Acrylic



Project :
Contractor :
MAAX Representative : Tel :
Date :

www.maax.com

Vivez l'expérience
MAAX[®]
Enjoy the experience

STANDARD FEATURES

- Rectangular shape bathtub
- Alcove installation with tiling flange
- Minimalist look with discreet armrests and textured floor
- Right or left-hand drain

OPTIONS


- One chromotherapy light
- Water heater assembly (factory installed)
- Metal trim kit for whirlpool and combined systems
- Metal trim kit for Air Push Control
- Cable-operated waste and overflow
- Foam pillow with 2 suction pads


UNIQUE FEATURES

- Tiling Flange

SYSTEMS

 MAAX Professional Whirlpool

 Aeroeffect **DOOR**

 Combined Whirlpool/Aeroeffect

 Chromotherapy **SELECTION**

Combine with MAAX's complete shower door offering visit www.maax.com

CERTIFICATIONS

Maax products adhere to one or more of the following certifications:



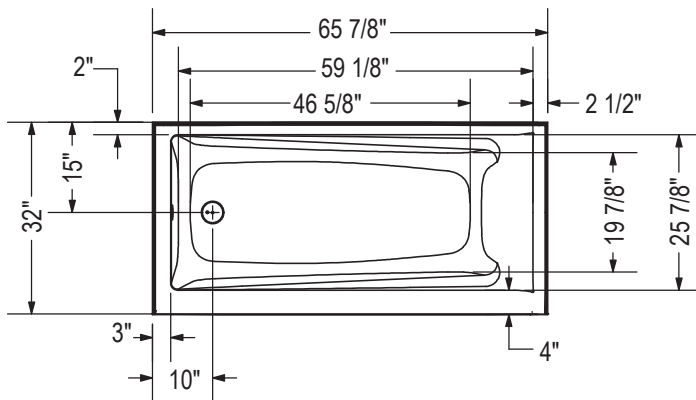
2017-11-09

MAAX SUBMITTAL SPECIFICATIONS

Exhibit 6632 IF

MODEL NUMBER 106220

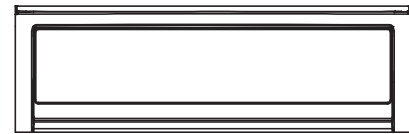
TECHNICAL DRAWINGS



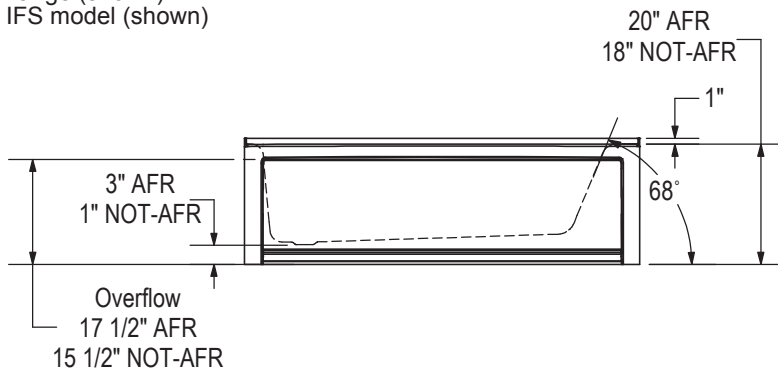
IFS Without System
Single tiling flange



IFS With System
(access panel)
Single tiling flange



1" Single integrated tiling
flange (shown)
IFS model (shown)

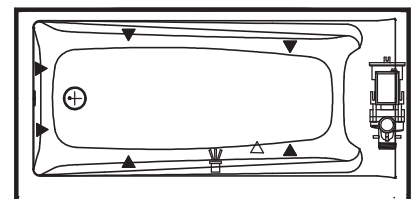


Technical drawing is universal for all
Exhibit 6632 configurations.

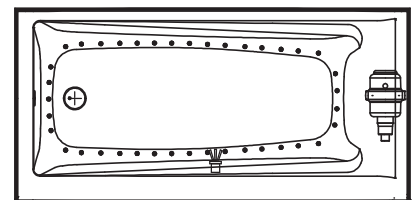
Wood support design may vary.
Single Integrated tiling flange: 1" height x 1/4" thickness (shown)

All dimensions are approximate.
Structure measurement must be verified against the unit to ensure proper fit.

WHIRLPOOL SYSTEM



AIR SYTEM



- (▲) : Indicates whirlpool jets positioning
- (△) : Indicates suction positioning
- (●) : Indicates airjets positioning
- (☼) : Indicates chromatherapy light positioning