

MAAX SUBMITTAL SPECIFICATIONS

Pose 6032 IF

MODEL NUMBER 106201

DIMENSIONS: 60" x 32" x 24"



Project :
Contractor :
MAAX Representative : Tel :
Date :

www.maax.com

Vivez l'expérience
MAAX®
Enjoy the experience

STANDARD FEATURES

- Rectangular shape bathtub with choices of two deck highs (3/8 or 2 in.) Please specify when ordering
- Drop-in installation or with integrated flange (IF) for alcove or corner installation
- Textured floor
- Ample deck space for faucet installation
- Skirt with or without access panel available

OPTIONS


- Acrylic apron without access panel
- Acrylic apron with access panel
- One chromatherapy light
- Water heater assembly (factory installed)
- Metal trim kit for whirlpool and combined systems
- Two 6-in. grab bars


UNIQUE FEATURES

- None

SYSTEMS

 MAAX Professional Whirlpool

 Aeroeffect **DOOR**

 Combined
Whirlpool/Aeroeffect

SELECTION

Combine with MAAX's complete shower door offering visit www.maax.com

CERTIFICATIONS

Maax products adhere to one or more of the following certifications:



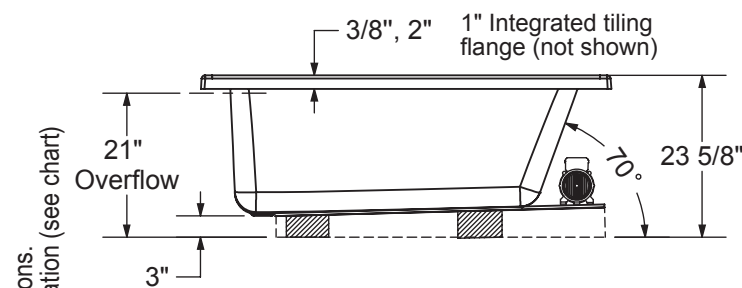
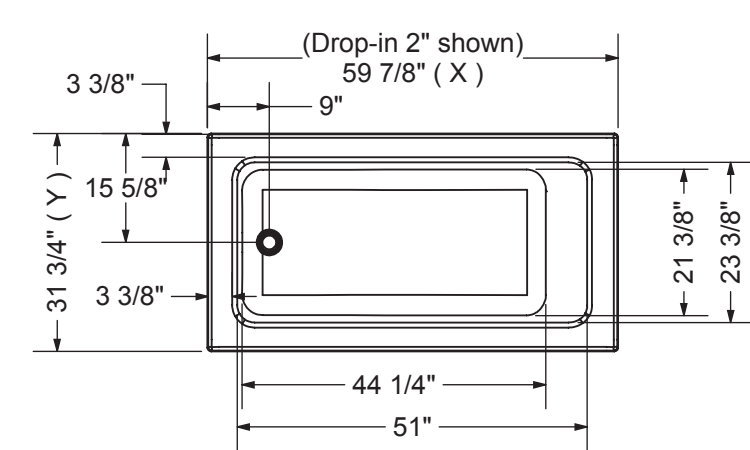
2017-11-09

MAAX SUBMITTAL SPECIFICATIONS

Pose 6032 IF

MODEL NUMBER 106201

TECHNICAL DRAWINGS



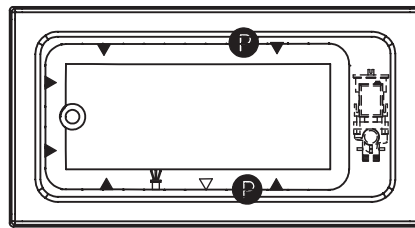
Technical drawing is universal for all 6032 configurations.
 External dimension (X,Y) vary depending on configuration (see chart)

	DROP IN 2"	DROP IN 3/8"	ALCOVE / CORNER
X	59 7/8"	59 3/4"	59 5/8"
Y	31 3/4"	31 5/8"	31 5/8"

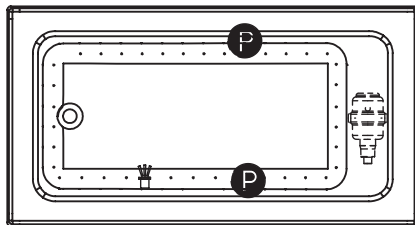
Wood support design may vary.
 Integrated tiling flange: 1" height X 1/4" thickness (not shown)
 Tiling flange position is determined by chosen configuration.

All dimensions are approximate.
 Structure measurement must be verified against the unit to ensure proper fit.

WHIRLPOOL SYSTEM



AIR SYSTEM



- (P) : Indicates optional grab bar positioning
- (▲) : Indicates whirlpool jets positioning
- (△) : Indicates suction positioning
- (●) : Indicates airjets positioning
- (⚡) : Indicates chromotherapy light positioning

APRON (alcove version only)

