

# MAAX SUBMITTAL SPECIFICATIONS

## Exhibit 7232 IF

**MODEL NUMBER 106224**

DIMENSIONS: 72" x 32" x 18" Acrylic



Project : .....  
Contractor : .....  
MAAX Representative : ..... Tel : .....  
Date : .....

[www.maax.com](http://www.maax.com)

Vivez l'expérience  
**MAAX**<sup>®</sup>  
Enjoy the experience

### STANDARD FEATURES

- Rectangular shape bathtub
- Alcove installation with tiling flange
- Minimalist look with discreet armrests and textured floor
- Right of left-hand drain

### OPTIONS

- One chromotherapy light
- Water heater assembly (factory installed)
- Metal trim kit for whirlpool and combined systems
- Metal trim kit for Air Push Control
- Cable-operated waste and overflow
- Foam pillow with 2 suction pads

### UNIQUE FEATURES

- Tiling Flange

### SYSTEMS

-  MAAX Professional Whirlpool
-  Aeroeffect **DOOR**
-  Combined Whirlpool/Aeroeffect
-  Chromotherapy **SELECTION**

Combine with MAAX's complete shower door offering visit [www.maax.com](http://www.maax.com)

### CERTIFICATIONS

Maax products adhere to one or more of the following certifications:



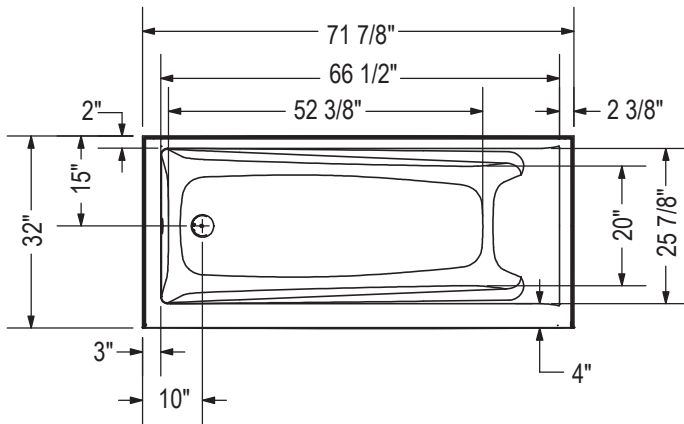
2017-11-09

## MAAX SUBMITTAL SPECIFICATIONS

# Exhibit 7232 IF

MODEL NUMBER 106224

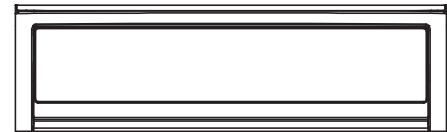
## TECHNICAL DRAWINGS



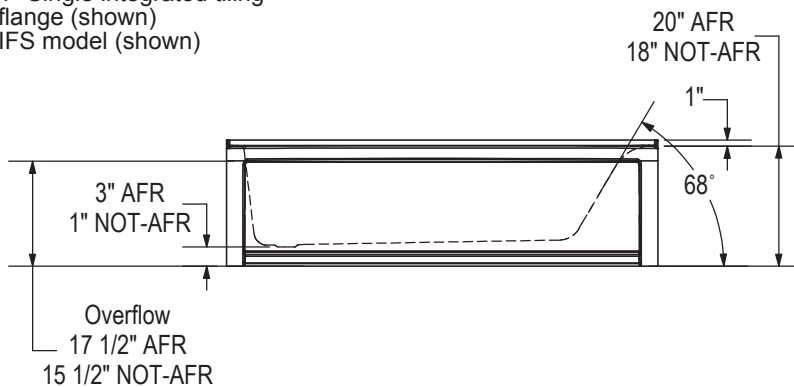
IFS Without System  
Single tiling flange



IFS With System  
(access panel)  
Single tiling flange



1" Single integrated tiling  
flange (shown)  
IFS model (shown)

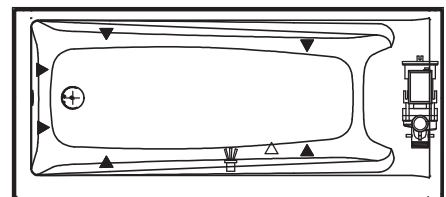


Technical drawing is universal for all  
Exhibit 7232 configurations.

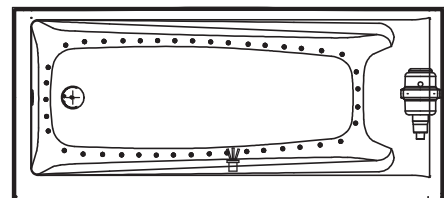
Wood support design may vary.  
Single Integrated tiling flange: 1" height x 1/4" thickness (shown)

All dimensions are approximate.  
Structure measurement must be verified against the unit to ensure proper fit.

WHIRLPOOL SYSTEM



AIR SYTEM



- ( ▲ ) : Indicates whirlpool jets positioning
- ( △ ) : Indicates suction positioning
- ( ● ) : Indicates airjets positioning
- ( ☐ ) : Indicates chromatherapy light positioning