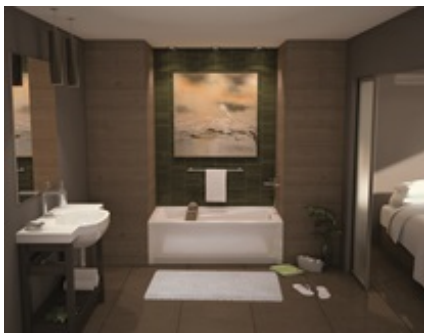


# MAAX SUBMITTAL SPECIFICATIONS

## Exhibit 7232 IFS

**MODEL NUMBER 106225**

DIMENSIONS: 72" x 32" x 18" Acrylic



Project : .....  
Contractor : .....  
MAAX Representative : ..... Tel : .....  
Date : .....

[www.maax.com](http://www.maax.com)

Vivez l'expérience  
**MAAX**<sup>®</sup>  
Enjoy the experience

### STANDARD FEATURES

- Rectangular shape bathtub in alcove installation
- Available in Above-the-Floor Rough (AFR) or not
- Minimalist look with discreet armrests and textured floor
- Integrated tiling flange
- Integrated skirt with access panel when equipped with a system

### OPTIONS

- Removable access panel
- One chromatherapy light
- Water heater assembly (factory installed)
- Metal trim kit for whirlpool and combined systems
- Metal trim kit for Air Push Control
- Cable-operated waste and overflow


### UNIQUE FEATURES

- Tiling Flange

### SYSTEMS

 MAAX Professional Whirlpool

 Aeroeffect **DOOR**

 Combined  
Whirlpool/Aeroeffect

 Chromatherapy **SELECTION**

Combine with MAAX's complete shower door offering visit [www.maax.com](http://www.maax.com)

### CERTIFICATIONS

Maax products adhere to one or more of the following certifications:



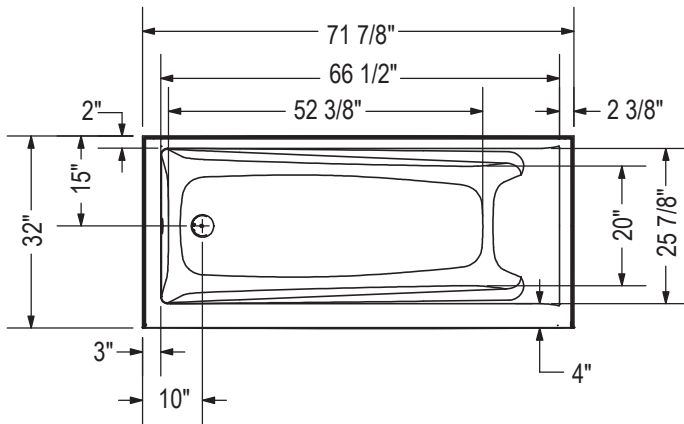
2017-11-09

## MAAX SUBMITTAL SPECIFICATIONS

# Exhibit 7232 IFS

MODEL NUMBER 106225

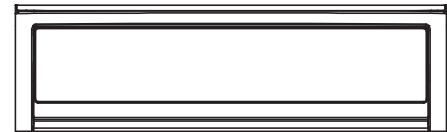
## TECHNICAL DRAWINGS



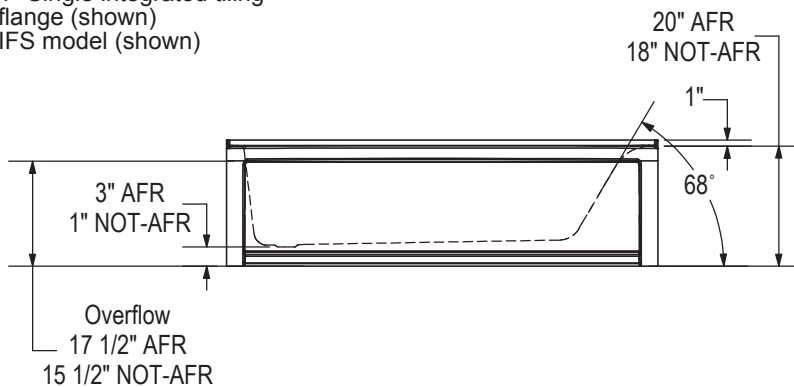
IFS Without System  
Single tiling flange



IFS With System  
(access panel)  
Single tiling flange



1" Single integrated tiling  
flange (shown)  
IFS model (shown)

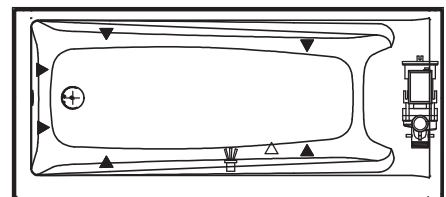


Technical drawing is universal for all  
Exhibit 7232 configurations.

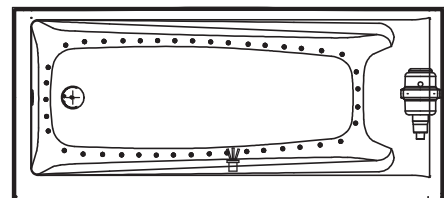
Wood support design may vary.  
Single Integrated tiling flange: 1" height x 1/4" thickness (shown)

All dimensions are approximate.  
Structure measurement must be verified against the unit to ensure proper fit.

WHIRLPOOL SYSTEM



AIR SYTEM



- ( ▲ ) : Indicates whirlpool jets positioning
- ( △ ) : Indicates suction positioning
- ( ● ) : Indicates airjets positioning
- ( ☒ ) : Indicates chromatherapy light positioning