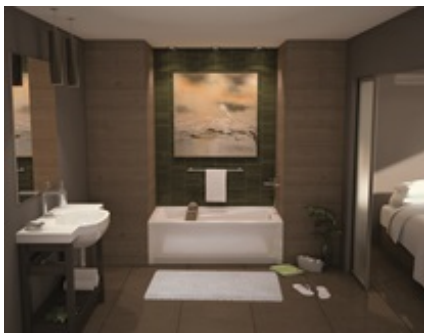


MAAX SUBMITTAL SPECIFICATIONS

Exhibit 7232 IFS AFR

MODEL NUMBER 106226

DIMENSIONS: 72" x 32" x 20" Acrylic



Project :
Contractor :
MAAX Representative : Tel :
Date :

www.maax.com

Vivez l'expérience
MAAX[®]
Enjoy the experience

STANDARD FEATURES

- Rectangular shape bathtub in alcove installation
- Available in Above-the-Floor Rough (AFR) or not
- Minimalist look with discreet armrests and textured floor
- Integrated tiling flange
- Integrated skirt with access panel when equipped with a system

OPTIONS


- Removable access panel
- One chromatherapy light
- Water heater assembly (factory installed)
- Metal trim kit for whirlpool and combined systems
- Metal trim kit for Air Push Control
- Cable-operated waste and overflow


UNIQUE FEATURES

- Tiling Flange

SYSTEMS

 MAAX Professional Whirlpool

 Aeroeffect **DOOR**

 Combined
Whirlpool/Aeroeffect

 Chromatherapy **SELECTION**

Combine with MAAX's complete shower door offering visit www.maax.com

CERTIFICATIONS

Maax products adhere to one or more of the following certifications:



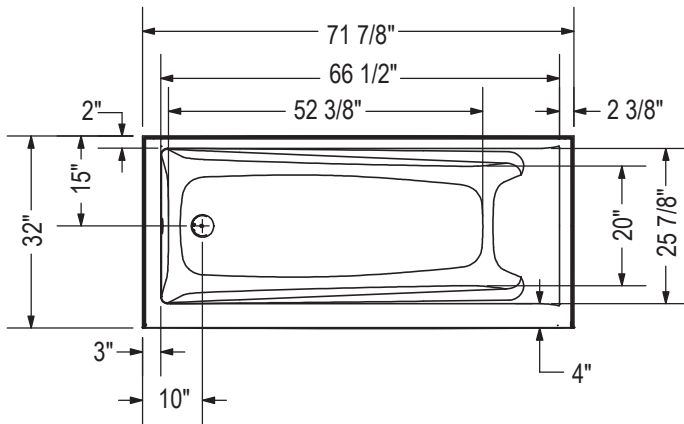
2017-11-09

MAAX SUBMITTAL SPECIFICATIONS

Exhibit 7232 IFS AFR

MODEL NUMBER 106226

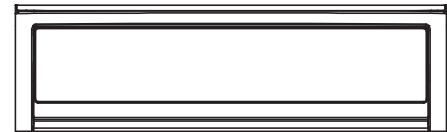
TECHNICAL DRAWINGS



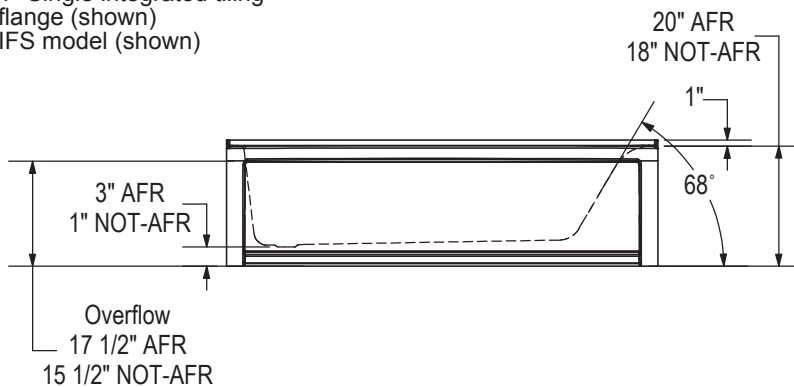
IFS Without System
Single tiling flange



IFS With System
(access panel)
Single tiling flange



1" Single integrated tiling
flange (shown)
IFS model (shown)

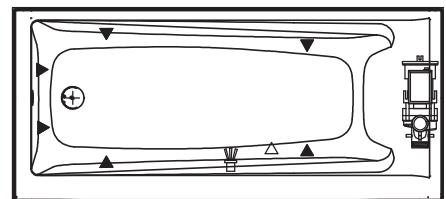


Technical drawing is universal for all
Exhibit 7232 configurations.

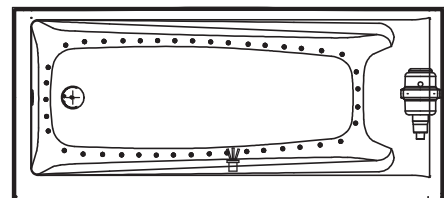
Wood support design may vary.
Single Integrated tiling flange: 1" height x 1/4" thickness (shown)

All dimensions are approximate.
Structure measurement must be verified against the unit to ensure proper fit.

WHIRLPOOL SYSTEM



AIR SYTEM



- (▲) : Indicates whirlpool jets positioning
- (△) : Indicates suction positioning
- (●) : Indicates airjets positioning
- (☐) : Indicates chromatherapy light positioning