

388-3386

Summit™ Dual Flush

Round Front, SmartHeight™, Vitreous China, Two-Piece Toilet



Features

- Dual flush technology with 3" flush tower
- 1.1 Gpf / 1.6 Gpf (4.0 Lpf / 6.0 Lpf)
- Round front, 16-1/2" SmartHeight™ bowl
- SmartFasten™ 3-bolt tank-to-bowl connection
- PuraClean™ easy-to-clean glaze
- Pilot operated anti-siphon fill valve
- 12" rough-in
- Chrome push button actuator
- 2" glazed trapway
- The Mansfield® limited lifetime warranty
- Available in white and standard colors: biscuit and bone






Round Front



Model 388-3386
Toilet seat not included

Components

Model #	Description	Codes/Standards
388-3386	Round front, SmartHeight™, two-piece dual flush toilet. Less toilet seat and supply. Specify color.	  
388	Round front, SmartHeight™, toilet bowl only. Less toilet seat. Specify color.	
3386	Tank and cover only, with chrome push button actuator. Less supply. Specify color.	



MADE IN USA

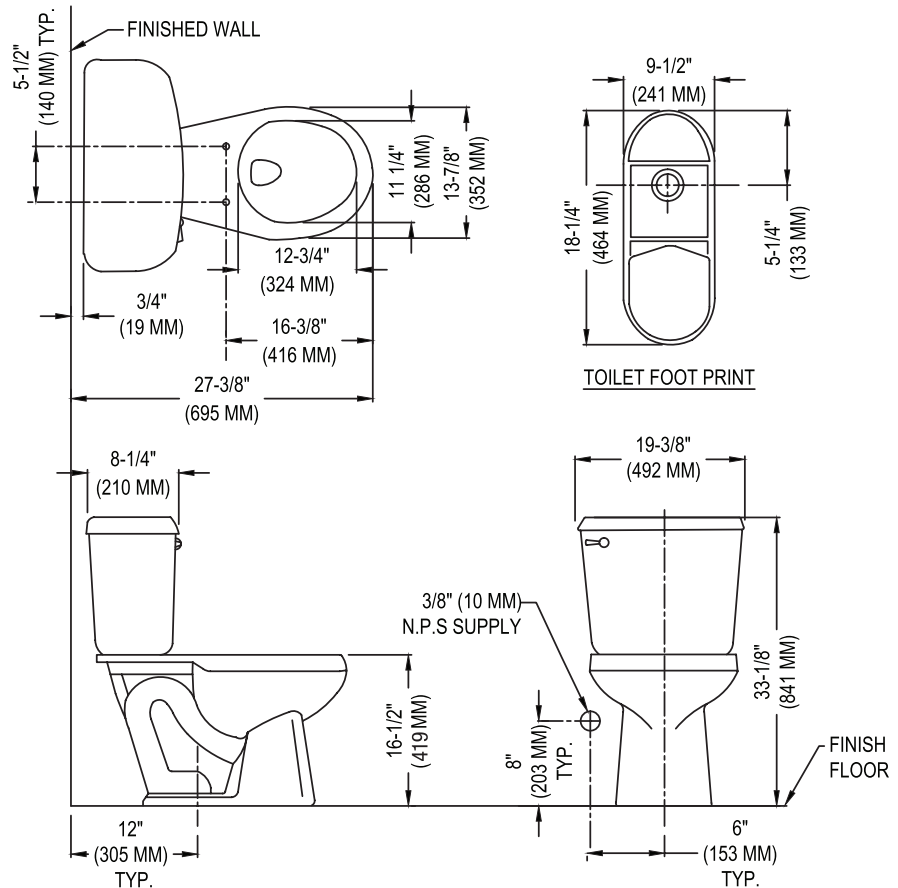
388-3386**Summit™ Dual Flush**

Round Front, SmartHeight™, Vitreous China, Two-Piece Toilet

**Specifications**

Model #	Description	Codes/Standards
388-3386	Round front, SmartHeight™, (1.1 / 1.6 gpf) two-piece dual flush toilet	

Specification	Description	Specification	Description
Material	Vitreous china	Trap Diameter	2"
Water Pressure Range	20 to 80 PSI	Trap Seal	2-3/8"
Flush System	Dual flush with 3" flush tower	Rough-in	12"
Water Usage	1.1 / 1.6 gpf	Shipping Weight	Model 388 - 52 lbs.
Water Surface Area	8" X 9"		Model 3386 - 38 lbs.
MaP Rating	1,000 grams	Warranty	Vitreous China - Limited Lifetime Tank Trim - Limited One Year

Technical Information

See our complete line of acrylic and vitreous china bathroom fixtures, plastic tank trim and plumbing products.

These dimensions are nominal and subject to change without notice.

Fixture performance and specifications meet or exceed ASME A112.19.2-2008/CSA B45.1-08 standards, and other state and local codes.

**MADE IN USA**