

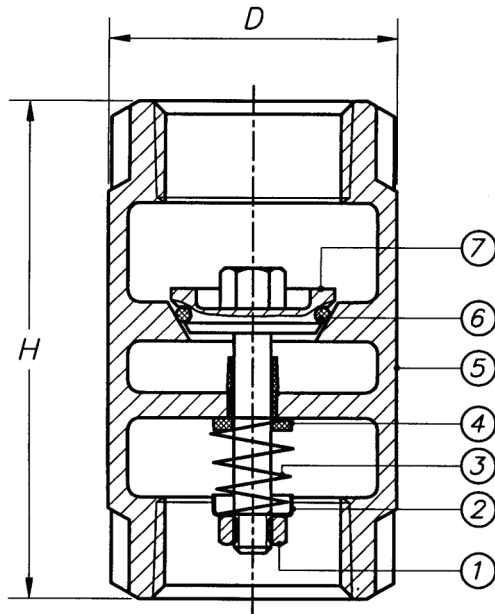
SUBMITTAL DATA SHEET

No-Lead Low Pressure Valves Bronze In-Line Check Valve – 72057T

FNPT X FNPT



A.Y. McDonald Mfg. Co. No-Lead Low Pressure Valves are constructed from heavy duty no-lead brass and are recommended for residential and commercial applications and positive shut-off with various inlet configurations.



Dimensions

Size	D	H	Flow Rate GPM	Pressure Test PSI	Pressure Drop PSI	C ^v
1/2"	1.26	2.40	13.6	25	5	5.27
3/4"	1.50	2.72	25.1	25	5	9.71
1"	1.77	3.23	42.4	25	5	16.42
1 1/4"	2.13	3.62	74.7	25	5	28.93
1 1/2"	2.36	4.04	83	25	10	32.15
2"	3.03	5.04	110.3	25	10	42.72
3"	4.21	7.28	315.6	25	10	122.23
4"	5.47	10.43	559.5	25	10	216.69

Materials

No.	Part	Material
1	Stem Nut	Stainless Steel
2	Spring Holder	Stainless Steel
3	Spring	Stainless Steel
4	Stem House	Formocon
5	Body	No-Lead Bronze
6	O-ring	Rubber
7	Stem	No-Lead Bronze

SUBMITTAL INFORMATION

- 200 WOG @ 180°F
- Sizes: 1/2" 3/4", 1", 1 1/4", 1 1/2", 2", 3", & 4"
- Spring loaded check
- Directional
- Complies with NSF/ANSI 372-2010

NO-LEAD: The weighted average of the wetted surface of this no-lead product contacted by consumable water contains less than one quarter of one percent (0.25%) lead.



A.Y. McDonald Mfg. Co.
P.O. Box 508
Dubuque, IA 52004-0508

Toll Free: 1-800-292-2737
Fax: 1-800-832-9296
Hours: 7:00 a.m. - 5:00 p.m., CST

sales@aymcdonald.com
www.aymcdonald.com

A.Y. McDonald considers the information on this assembly drawing correct when published. Item and option availability, including specifications, are subject to change without notice.

Submitted by: