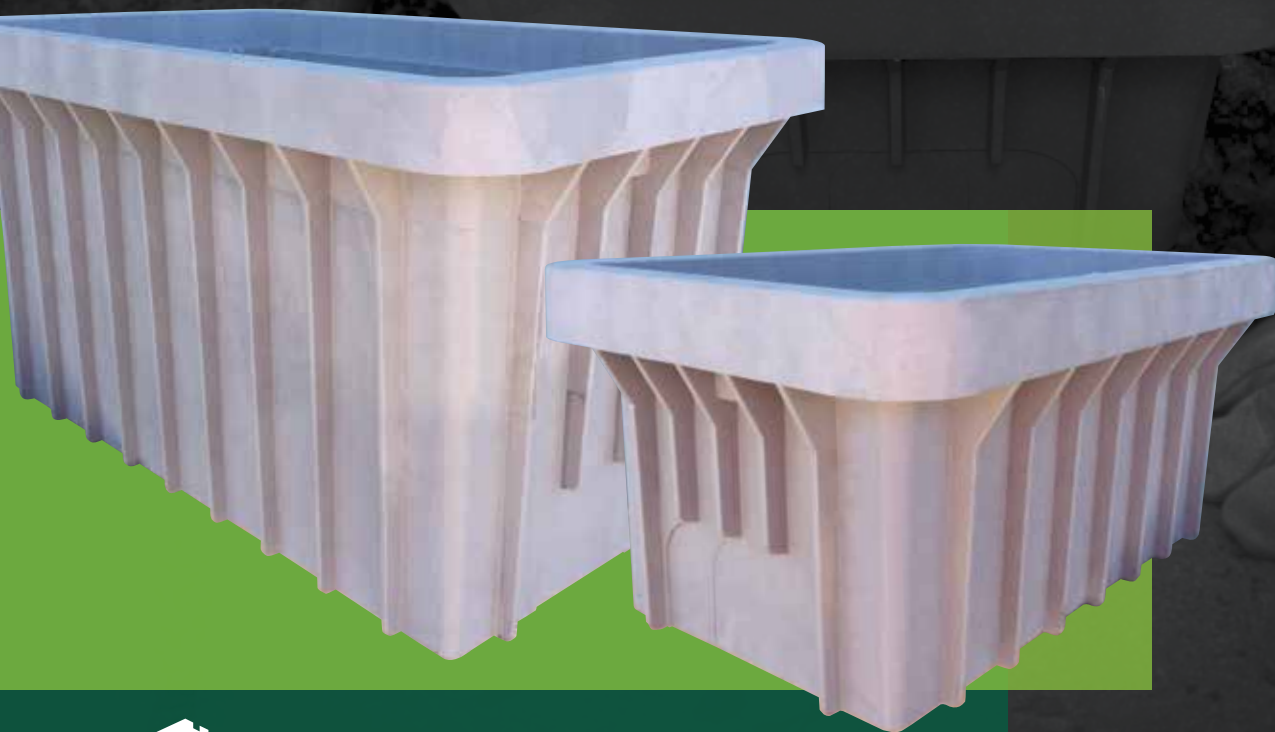


DURALITE™
SURPRISINGLY LIGHT.
EXCEPTIONALLY STRONG.



SURPRISINGLY LIGHT. EXCEPTIONALLY STRONG.

INTRODUCING DURALITE™

The performance you need - the ease of installation you love. The Duralite™ family of enclosure deliver unexpected Tier 15 load rating performance in the lightweight enclosure category. Engineered to withstand heavy loads, Duralite™ intelligently blends composite materials to provide durable, accessible security to our necessary infrastructure.

THE RIGHT FIT FOR YOUR NEEDS.

The Duralite™ family of enclosures has a wide scope that spans popular market sizes, from small pull box applications to larger 24" x 36" vaults and everything in between. With extensive lid and accessory options, Duralite™ provides an ideal solution for your needs.

ENGINEERED WITH YOU IN MIND.

Duralite™ was engineered to provide a versatile, high-quality solution for contractors. The lightweight design allows for safer installations and the uniquely strong and durable material is easily modified in the field with the use of basic tools.

**THE STRENGTH OF
POLYMER CONCRETE
DELIVERED AT 50%
OF THE WEIGHT.**



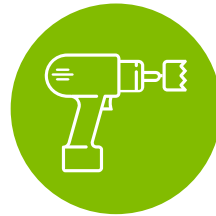
LIGHTWEIGHT

Duralite™ features a lightweight design allowing for easier, safer handling and installation. Many of the Duralite™ enclosures can be handled by just one person, per OSHA guidelines. Lift light, lift right.



STRONG

Strength and durability are key features to the Duralite™ family. The durable design and material overcome many common challenges traditional enclosure materials experience like chipping or cracking.



MODIFIABLE

Duralite™ allow for easy field modification with simple power tools. With a common 18V cordless drill and a hole saw, contractors or installers can modify these enclosures quickly and with minimal dust.



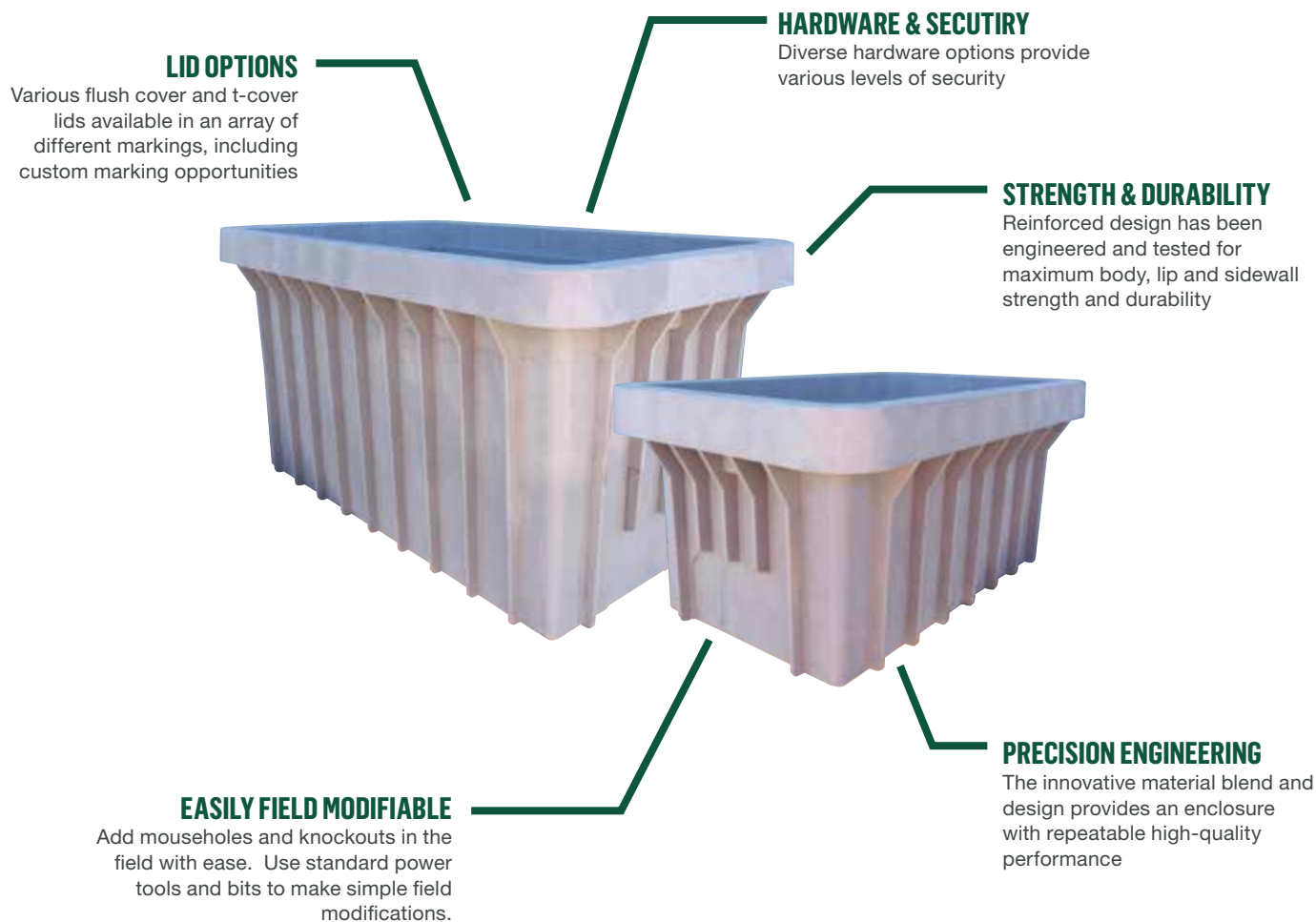
VARIETY OF SIZES

We understand that variety is important to meet the various needs of your projects, which is why we designed Duralite™ in a range of sizes and depths to provide the right enclosure for your project.

DURALITE™ FEATURES



Medium Duty: Non-Deliberate Traffic
ANSI/SCTE-77, Tier 15



DURALITE™ COMPOSITE ENCLOSURE FAMILY

Material	Model	Size (L x W)	Shape	Wall Type	Depths	Performance	Rating
Polyolefin Blend	1015	10" x 15"		Straight	12", 18"	Tier 15, Tier 22	Heavy Duty
	1015MAX	10" x 15"			12"		
	1118	11" x 18"			12", 18"	Tier 15	Medium Duty
	1324	13" x 24"			12", 18"		
	1730	17" x 30"			12", 18"		
	2436MAX	24" x 36"			24"		

NOTE: Actual load rating is determined by the box and cover combinations. Dimensions may vary slightly.

All information contained on this sheet is current at the time of printing.
Oldcastle, Inc. reserves the right to discontinue or update product information without notice.



**PROUDLY MADE
IN THE USA**

DURALITE™ SURPRISINGLY LIGHT. EXCEPTIONALLY STRONG.

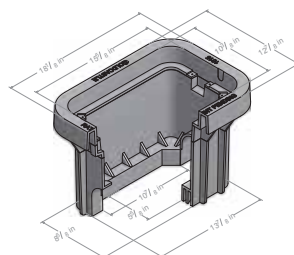
DURALITE™ 1015



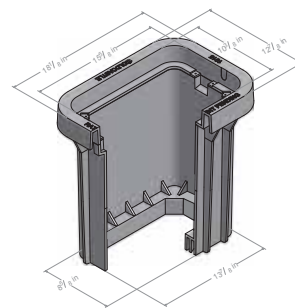
Medium Duty: Non-Deliberate Traffic
ANSI/SCTE-77, TIER 15 & TIER 22*



LID, POLYMER CONCRETE



1015-12 BODY



1015-18 BODY

Duralite™ 1015 - Rectangular							
Part #	Description	Color	Depth	Item Weight	Pallet Qty	Rating	Design Load

Body - 1015

10152560	Body, Duralite, Composite - 1015-12	Gray	12"	10.8 lbs	24	T15, T22*	22,500 lbf
10152585	Body, Duralite, Composite - 1015-18	Gray	18"	16 lbs	12	T15	15,000 lbf

*T22 rating when paired with polymer concrete lid.

Lid, Polymer Concrete, Flush - 1015

10154150	Lid, Polymer Conc, Blank	Gray	-	18.2 lbs	30	T22	22,500 lbf
10154163*	Lid, Polymer Conc, Marking Plate Req.	Gray	-	18.2 lbs	30	T22	22,500 lbf
10154151	Lid, Polymer Conc, Electric	Gray	-	18.2 lbs	30	T22	22,500 lbf
10154152	Lid, Polymer Conc, Street Lighting	Gray	-	18.2 lbs	30	T22	22,500 lbf
10154157	Lid, Polymer Conc, Signals	Gray	-	18.2 lbs	30	T22	22,500 lbf
10154153	Lid, Polymer Conc, Telephone	Gray	-	18.2 lbs	30	T22	22,500 lbf
10154154	Lid, Polymer Conc, Ground	Gray	-	18.2 lbs	30	T22	22,500 lbf
10154155	Lid, Polymer Conc, Communication	Gray	-	18.2 lbs	30	T22	22,500 lbf

Hardware kit is required when ordering a polymer concrete lid. See hardware options below.

*Marking plate is required when ordering the 10154163 lid. See marking plate options below.

Duralite™ 1015 - Accessories			
Part #	Description	Size	Material

Hardware, Stainless Steel

80002071	Bolt Kit, Duralite, Hex Bolt, Washer, Nut (Set of 2)	1/2" 6 x 2-1/2"	Stainless Steel
80002072	Bolt Kit, Duralite, Penta Bolt, Washer, Nut (Set of 2)	1/2" 6 x 2-1/2"	Stainless Steel
80002073	Bolt Kit, Duralite, Hex Bolt, Washer, Nut (Set of 2)	1/2" 13 x 2-1/2"	Stainless Steel
80002075	Bolt Kit, Duralite, Penta Bolt, Washer, Nut (Set of 2)	1/2" 13 x 2-1/2"	Stainless Steel
80002075	Bolt Kit, Duralite, Hex Bolt, Washer, Nut (Set of 2)	3/8" 16 x 2-1/2"	Stainless Steel
80002076	Bolt Kit, Duralite, Penta Bolt, Washer, Nut (Set of 2)	3/8" 16 x 2-1/2"	Stainless Steel

Marking Plate, Composite

31901010	Marking Plate, Electric	4" x 8"	Plastic
31901030	Marking Plate, Traffic Signal	4" x 8"	Plastic
31901040	Marking Plate, Street Lighting	4" x 8"	Plastic
31901050	Marking Plate, High Voltage	4" x 8"	Plastic
31901070	Marking Plate, Lighting	4" x 8"	Plastic
31901020	Marking Plate, Communication	4" x 8"	Plastic
31901021	Marking Plate, Telephone	4" x 8"	Plastic
31901060	Marking Plate, CATV	4" x 8"	Plastic
31901061	Marking Plate, Fiber Optics	4" x 8"	Plastic

CUSTOM MARKING OPTIONS AVAILABLE: 2 rows of lettering, 13 characters per row. Contact customer service for custom and specialty options.

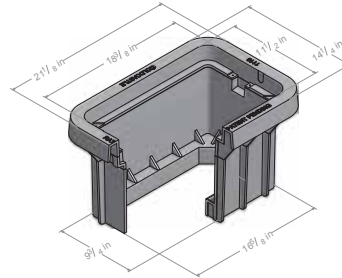
DURALITE™ 1118



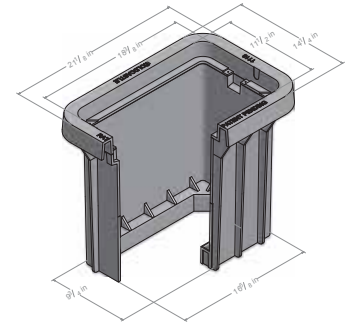
Medium Duty: Non-Deliberate Traffic
ANSI/SCTE-77, TIER 15



LID, POLYMER CONCRETE



1118-12 BODY



1118-18 BODY

Duralite™ 1118 - Rectangular							
Part #	Description	Color	Depth	Item Weight	Pallet Qty	Rating	Design Load

Body - 1118

11182575	Body, Duralite, Composite - 1118-12	Gray	12"	14.9 lbs	24	T15	15,000 lbf
11182590	Body, Duralite, Composite - 1118-18	Gray	18"	18.5 lbs	12	T15	15,000 lbf

Lid, Polymer Concrete, Flush - 1118

11184612	Lid, Polymer Conc, T15, Blank	Gray	-	20 lbs	60	T15	15,000 lbf
11184600*	Lid, Polymer Conc, T15, Mark Plate Req.	Gray	-	20 lbs	60	T15	15,000 lbf
11184606	Lid, Polymer Conc, T15, Electric	Gray	-	20 lbs	60	T15	15,000 lbf
11184609	Lid, Polymer Conc, T15, Street Lighting	Gray	-	20 lbs	60	T15	15,000 lbf
11184611	Lid, Polymer Conc, Traffic Signal	Gray	-	20 lbs	30	T15	15,000 lbf
11184605	Lid, Polymer Conc, T15, Communication	Gray	-	20 lbs	60	T15	15,000 lbf
11184607	Lid, Polymer Conc, T15, Fiber Optics	Gray	-	20 lbs	60	T15	15,000 lbf
11184610	Lid, Polymer Conc, T15, Telephone	Gray	-	20 lbs	60	T15	15,000 lbf

Hardware kit is required when ordering a polymer concrete lid. See hardware options below.

*Marking plate is required when ordering the 11184600 lid. See marking plate options below.

Duralite™ 1118 - Accessories			
Part #	Description	Size	Material

Hardware, Stainless Steel

80002071	Bolt Kit, Duralite, Hex Bolt, Washer, Nut (Set of 2)	1/2" 6 x 2-1/2"	Stainless Steel
80002072	Bolt Kit, Duralite, Penta Bolt, Washer, Nut (Set of 2)	1/2" 6 x 2-1/2"	Stainless Steel
80002073	Bolt Kit, Duralite, Hex Bolt, Washer, Nut (Set of 2)	1/2" 13 x 2-1/2"	Stainless Steel
80002075	Bolt Kit, Duralite, Penta Bolt, Washer, Nut (Set of 2)	1/2" 13 x 2-1/2"	Stainless Steel
80002075	Bolt Kit, Duralite, Hex Bolt, Washer, Nut (Set of 2)	3/8" 16 x 2-1/2"	Stainless Steel
80002076	Bolt Kit, Duralite, Penta Bolt, Washer, Nut (Set of 2)	3/8" 16 x 2-1/2"	Stainless Steel

Marking Plate, Composite

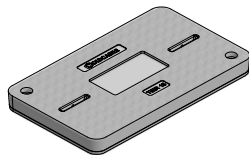
31901010	Marking Plate, Electric	4" x 8"	Plastic
31901030	Marking Plate, Traffic Signal	4" x 8"	Plastic
31901040	Marking Plate, Street Lighting	4" x 8"	Plastic
31901050	Marking Plate, High Voltage	4" x 8"	Plastic
31901070	Marking Plate, Lighting	4" x 8"	Plastic
31901020	Marking Plate, Communication	4" x 8"	Plastic
31901021	Marking Plate, Telephone	4" x 8"	Plastic
31901060	Marking Plate, CATV	4" x 8"	Plastic
31901061	Marking Plate, Fiber Optics	4" x 8"	Plastic

CUSTOM MARKING OPTIONS AVAILABLE: 2 rows of lettering, 13 characters per row. Contact customer service for custom and specialty options.

DURALITE™ 1324



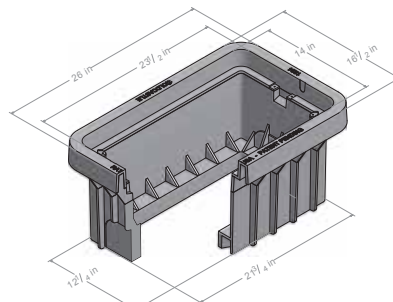
Medium Duty: Non-Deliberate Traffic
ANSI/SCTE-77, TIER 15



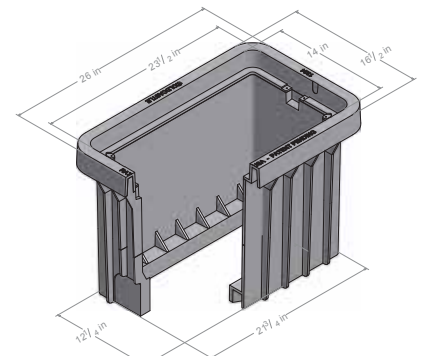
LID, COMPOSITE



LID, POLYMER CONCRETE



1324-12 BODY



1324-18 BODY

Duralite™ 1324 - Rectangular							
Part #	Description	Color	Depth	Item Weight	Pallet Qty	Rating	Design Load
Body - 1324							
13242560	Body, Duralite, Composite - 1324-12	Gray	12"	19.2 lbs	16	T15	15,000 lbf
13242565	Body, Duralite, Composite - 1324-18	Gray	18"	25.9 lbs	8	T15	15,000 lbf

Lid, Polymer Concrete, Flush - 1324

13244603	Lid, Polymer Conc, T15, Blank	Gray	-	38 lbs	30	T15	15,000 lbf
13244600*	Lid, Polymer Conc, T15, Mark Plate Req	Gray	-	38 lbs	30	T15	15,000 lbf
13244607	Lid, Polymer Conc, T15, Electric	Gray	-	38 lbs	30	T15	15,000 lbf
13244610	Lid, Polymer Conc, T15, Street Lighting	Gray	-	38 lbs	30	T15	15,000 lbf
13244612	Lid, Composite, T15 Traffic Signal	Gray	-	38 lbs	30	T15	15,000 lbf
13244606	Lid, Polymer Conc, T15, Communication	Gray	-	38 lbs	30	T15	15,000 lbf
13244608	Lid, Polymer Conc, T15, Fiber Optics	Gray	-	38 lbs	30	T15	15,000 lbf
13244183	Lid, Polymer Conc, T15, Telephone	Gray	-	38 lbs	30	T15	15,000 lbf

Hardware kit is required when ordering a polymer concrete lid. See hardware options below.

*Marking plate is required when ordering the 13244600 lid. See marking plate options below.

Lid, Composite, Flush - 1324

31150121	Lid, Composite, T15, Blank	Gray	-	38 lbs	50	T15	15,000 lbf
31159821*	Lid, Composite, T15, Marking Plate Req	Gray	-	38 lbs	50	T15	15,000 lbf
31150221	Lid, Composite, T15, Electric	Gray	-	38 lbs	50	T15	15,000 lbf
31151121	Lid, Composite, T15 Street Lighting	Gray	-	38 lbs	50	T15	15,000 lbf
31151321	Lid, Composite, T15 Traffic Signal	Gray	-	38 lbs	50	T15	15,000 lbf
31151621	Lid, Composite, T15, Communication	Gray	-	38 lbs	50	T15	15,000 lbf
31150421	Lid, Composite, T15, Fiber Optics	Gray	-	38 lbs	50	T15	15,000 lbf
31150321	Lid, Composite, T15, Telephone	Gray	-	38 lbs	50	T15	15,000 lbf

Hardware kit is required when ordering a composite lid. See hardware options below.

*Marking plate is required when ordering the 31159821 lid. See marking plate options below.

Duralite™ 1324 - Accessories			
Part #	Description	Size	Material
Hardware, Stainless Steel			
80002071	Bolt Kit, Duralite, Hex Bolt, Washer, Nut (Set of 2)	1/2" 6 x 2-1/2"	Stainless Steel
80002072	Bolt Kit, Duralite, Penta Bolt, Washer, Nut (Set of 2)	1/2" 6 x 2-1/2"	Stainless Steel
80002073	Bolt Kit, Duralite, Hex Bolt, Washer, Nut (Set of 2)	1/2" 13 x 2-1/2"	Stainless Steel
80002075	Bolt Kit, Duralite, Penta Bolt, Washer, Nut (Set of 2)	1/2" 13 x 2-1/2"	Stainless Steel
80002075	Bolt Kit, Duralite, Hex Bolt, Washer, Nut (Set of 2)	3/8" 16 x 2-1/2"	Stainless Steel
80002076	Bolt Kit, Duralite, Penta Bolt, Washer, Nut (Set of 2)	3/8" 16 x 2-1/2"	Stainless Steel

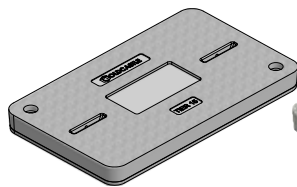
Marking Plates, Composite

31901010	Marking Plate, Electric	4" x 8"	Plastic
31901030	Marking Plate, Traffic Signal	4" x 8"	Plastic
31901040	Marking Plate, Street Lighting	4" x 8"	Plastic
31901050	Marking Plate, High Voltage	4" x 8"	Plastic
31901070	Marking Plate, Lighting	4" x 8"	Plastic
31901020	Marking Plate, Communication	4" x 8"	Plastic
31901021	Marking Plate, Telephone	4" x 8"	Plastic
31901060	Marking Plate, CATV	4" x 8"	Plastic
31901061	Marking Plate, Fiber Optics	4" x 8"	Plastic

DURALITE™ 1730



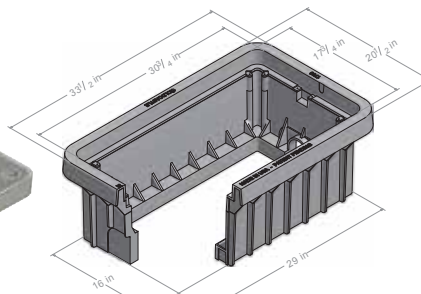
Medium Duty: Non-Deliberate Traffic
ANSI/SCTE-77, TIER 15



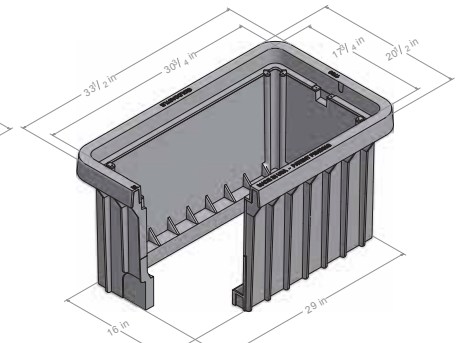
LID, COMPOSITE



LID, POLYMER CONCRETE



1730-12 BODY



1730-18 BODY

Duralite™ 1730 - Rectangular

Part #	Description	Color	Depth	Item Weight	Pallet Qty	Rating	Design Load
Body - 1730							
17302585	Body, Duralite, Composite - 1730-12	Gray	12"	28.5 lbs	8	T15	15,000 lbf
17302590	Body, Duralite, Composite - 1730-18	Gray	18"	36.2 lbs	4	T15	15,000 lbf

Lid, Polymer Concrete, Flush - 1730

17304604	Lid, Polymer Conc, T15, Blank	Gray	-	62 lbs	25	T15	15,000 lbf
17304600*	Lid, Polymer Conc, T15, Mark Plate Req	Gray	-	62 lbs	25	T15	15,000 lbf
17304608	Lid, Polymer Conc, T15, Electric	Gray	-	62 lbs	25	T15	15,000 lbf
17304611	Lid, Polymer Conc, T15, Street Lighting	Gray	-	62 lbs	25	T15	15,000 lbf
17304147	Lid, Polymer Conc, Traffic Signal	Gray	-	62 lbs	25	T15	15,000 lbf
17304607	Lid, Polymer Conc, T15, Communication	Gray	-	62 lbs	25	T15	15,000 lbf
17304609	Lid, Polymer Conc, T15, Fiber Optics	Gray	-	62 lbs	25	T15	15,000 lbf
17304612	Lid, Polymer Conc, T15, Telephone	Gray	-	62 lbs	25	T15	15,000 lbf

NOTE: Hardware kit is required when ordering a polymer concrete lid. See hardware options below.

*Marking plate is required when ordering the 17304600 lid. See marking plate options below.

Lid, Composite, Flush - 1730

31200121	Lid, Composite, T15, Blank	Gray	-	73 lbs	42	T15	15,000 lbf
31209821*	Lid, Composite, T15, Marking Plate Req	Gray	-	73 lbs	42	T15	15,000 lbf
31200221	Lid, Composite, T15, Electric	Gray	-	73 lbs	42	T15	15,000 lbf
31201121	Lid, Composite, T15 Street Lighting	Gray	-	73 lbs	42	T15	15,000 lbf
31201321	Lid, Composite, T15 Traffic Signal	Gray	-	73 lbs	42	T15	15,000 lbf
31201621	Lid, Composite, T15, Communication	Gray	-	73 lbs	42	T15	15,000 lbf
31200421	Lid, Composite, T15, Fiber Optics	Gray	-	73 lbs	42	T15	15,000 lbf
31200321	Lid, Composite, T15, Telephone	Gray	-	73 lbs	42	T15	15,000 lbf

Hardware kit is required when ordering a composite lid. See hardware options below.

*Marking plate is required when ordering the 31209821 lid. See marking plate options below.

Duralite™ 1730 - Accessories

Part #	Description	Size	Material
Hardware, Stainless Steel			
80002071	Bolt Kit, Duralite, Hex Bolt, Washer, Nut (Set of 2)	1/2" 6 x 2-1/2"	Stainless Steel
80002072	Bolt Kit, Duralite, Penta Bolt, Washer, Nut (Set of 2)	1/2" 6 x 2-1/2"	Stainless Steel
80002073	Bolt Kit, Duralite, Hex Bolt, Washer, Nut (Set of 2)	1/2" 13 x 2-1/2"	Stainless Steel
80002075	Bolt Kit, Duralite, Penta Bolt, Washer, Nut (Set of 2)	1/2" 13 x 2-1/2"	Stainless Steel
80002075	Bolt Kit, Duralite, Hex Bolt, Washer, Nut (Set of 2)	3/8" 16 x 2-1/2"	Stainless Steel
80002076	Bolt Kit, Duralite, Penta Bolt, Washer, Nut (Set of 2)	3/8" 16 x 2-1/2"	Stainless Steel

Marking Plates, Composite

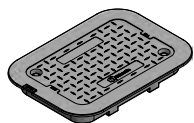
31901010	Marking Plate, Electric	4" x 8"	Plastic
31901030	Marking Plate, Traffic Signal	4" x 8"	Plastic
31901040	Marking Plate, Street Lighting	4" x 8"	Plastic
31901050	Marking Plate, High Voltage	4" x 8"	Plastic
31901070	Marking Plate, Lighting	4" x 8"	Plastic
31901020	Marking Plate, Communication	4" x 8"	Plastic
31901021	Marking Plate, Telephone	4" x 8"	Plastic
31901060	Marking Plate, CATV	4" x 8"	Plastic
31901061	Marking Plate, Fiber Optics	4" x 8"	Plastic

DURALITE™ SURPRISINGLY LIGHT. EXCEPTIONALLY STRONG.

DURALITE™ 1015MAX



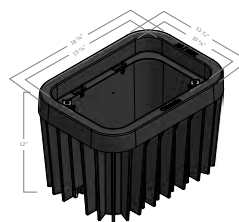
Medium Duty: Non-Deliberate Traffic
ANSI/SCTE-77, TIER 22



LID, T COVER PLASTIC



LID, POLYMER CONCRETE



1015MAX-12 BODY

Duralite™ 1015MAX - Rectangular							
Part #	Description	Color	Depth	Item Weight	Pallet Qty	Rating	Design Load

Body - 1015MAX

10152555	Body, Duralite, Composite - 1015-12	Black	12"	15.3 lbs	18	T22	22,500 lbf
----------	-------------------------------------	-------	-----	----------	----	-----	------------

Lid, Polymer Concrete, Flush - 1015

10154150	Lid, Polymer Conc, Blank	Gray	-	18.2 lbs	30	T22	22,500 lbf
10154163*	Lid, Polymer Conc, Marking Plate Req.	Gray	-	18.2 lbs	30	T22	22,500 lbf
10154151	Lid, Polymer Conc, Electric	Gray	-	18.2 lbs	30	T22	22,500 lbf
10154152	Lid, Polymer Conc, Street Lighting	Gray	-	18.2 lbs	30	T22	22,500 lbf
10154157	Lid, Polymer Conc, Signals	Gray	-	18.2 lbs	30	T22	22,500 lbf
10154153	Lid, Polymer Conc, Telephone	Gray	-	18.2 lbs	30	T22	22,500 lbf
10154154	Lid, Polymer Conc, Ground	Gray	-	18.2 lbs	30	T22	22,500 lbf
10154155	Lid, Polymer Conc, Communication	Gray	-	18.2 lbs	30	T22	22,500 lbf

NOTE: Hardware kit is required when ordering a polymer concrete lid. See hardware options below.
*Marking plate is required when ordering the 10154163 lid. See marking plate options below.

Lid, Plastic, T-Cover, Hardware Included - 1015

10154190	T Cover, Plastic, Blank	Gray	-	6.57 lbs	200	T22	22,500 lbf
10154191	T Cover, Plastic, Communication	Gray	-	6.57 lbs	200	T22	22,500 lbf
10154192	T Cover, Plastic, Electric	Gray	-	6.57 lbs	200	T22	22,500 lbf
10154196	T Cover, Plastic, Green, Communication	Green	-	6.57 lbs	200	T22	22,500 lbf
10154197	T Cover, Plastic, Green, Electric	Green	-	6.57 lbs	200	T22	22,500 lbf

Duralite™ 1015 - Accessories			
Part #	Description	Size	Material

Hardware, Stainless Steel

80002071	Bolt Kit, Duralite, Hex Bolt, Washer, Nut (Set of 2)	1/2" 6 x 2-1/2"	Stainless Steel
80002072	Bolt Kit, Duralite, Penta Bolt, Washer, Nut (Set of 2)	1/2" 6 x 2-1/2"	Stainless Steel
80002073	Bolt Kit, Duralite, Hex Bolt, Washer, Nut (Set of 2)	1/2" 13 x 2-1/2"	Stainless Steel
80002075	Bolt Kit, Duralite, Penta Bolt, Washer, Nut (Set of 2)	1/2" 13 x 2-1/2"	Stainless Steel
80002075	Bolt Kit, Duralite, Hex Bolt, Washer, Nut (Set of 2)	3/8" 16 x 2-1/2"	Stainless Steel
80002076	Bolt Kit, Duralite, Penta Bolt, Washer, Nut (Set of 2)	3/8" 16 x 2-1/2"	Stainless Steel

Marking Plate, Composite

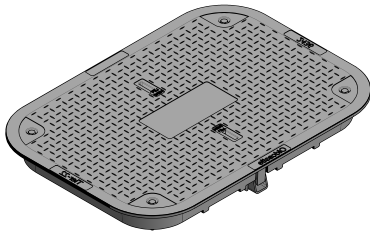
31901010	Marking Plate, Electric	4" x 8"	Plastic
31901030	Marking Plate, Traffic Signal	4" x 8"	Plastic
31901040	Marking Plate, Street Lighting	4" x 8"	Plastic
31901050	Marking Plate, High Voltage	4" x 8"	Plastic
31901070	Marking Plate, Lighting	4" x 8"	Plastic
31901020	Marking Plate, Communication	4" x 8"	Plastic
31901021	Marking Plate, Telephone	4" x 8"	Plastic
31901060	Marking Plate, CATV	4" x 8"	Plastic
31901061	Marking Plate, Fiber Optics	4" x 8"	Plastic

CUSTOM MARKING OPTIONS AVAILABLE: 2 rows of lettering, 13 characters per row. Contact customer service for custom and specialty options.

DURALITE™ 2436MAX



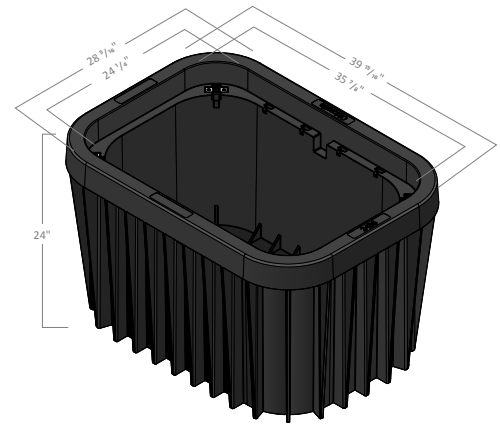
Medium Duty: Non-Deliberate Traffic
ANSI/SCTE-77, TIER 22



LID, T COVER PLASTIC



LID, POLYMER CONCRETE



1015MAX-12 BODY

Duralite™ 2436MAX - Rectangular							
Part #	Description	Color	Depth	Item Weight	Pallet Qty	Rating	Design Load
Body - 2436MAX							
24362070	Body, Duralite, Composite - 2436-24	Black	24"	70 lbs	2	T15, T22*	22,500 lbf

*T22 rating when paired with polymer concrete lid.

Lid, Polymer Concrete, Flush - 2436

24364010	Lid, Polymer Conc, T22, Blank	Gray	-	204 lbs	10	T22	22,500 lbf
24364603*	Lid, Polymer Conc, T22 Mark Plate Req	Gray	-	204 lbs	10	T22	22,500 lbf
24364008	Lid, Polymer Conc, T22, Electric	Gray	-	204 lbs	10	T22	22,500 lbf
24364017	Lid, Polymer Conc, T22, Street Lighting	Gray	-	204 lbs	10	T22	22,500 lbf
24364016	Lid, Polymer Conc, T22, Traffic Signal	Gray	-	204 lbs	10	T22	22,500 lbf
24364013	Lid, Polymer Conc, T22, Communication	Gray	-	204 lbs	10	T22	22,500 lbf
24364015	Lid, Polymer Conc, T22, Fiber Optics	Gray	-	204 lbs	10	T22	22,500 lbf
24364018	Lid, Polymer Conc, T22, Telephone	Gray	-	204 lbs	10	T22	22,500 lbf

NOTE: Hardware kit is required when ordering a polymer concrete lid. See hardware options below.

*Marking plate is required when ordering the 24364603 lid. See marking plate options below.

Lid, Plastic, T-Cover, Hardware Included - 2436

24364190	T Cover, Plastic, Blank	Gray	-	51.4 lbs	200	T15	15,000 lbf
24364192	T Cover, Plastic, Communication	Gray	-	51.4 lbs	200	T15	15,000 lbf
24364192	T Cover, Plastic, Electric	Gray	-	51.4 lbs	200	T15	15,000 lbf
24364196	T Cover, Plastic, Green, Communication	Green	-	51.4 lbs	200	T15	15,000 lbf
24364197	T Cover, Plastic, Green, Electric	Green	-	51.4 lbs	200	T15	15,000 lbf
24364195	T Cover, Plastic, Green, Blank	Green	-	51.4 lbs	200	T15	15,000 lbf

Duralite™ 2436MAX - Accessories			
Part #	Description	Size	Material

Hardware, Stainless Steel

80002071	Bolt Kit, Duralite, Hex Bolt, Washer, Nut (Set of 2)	1/2" 6 x 2-1/2"	Stainless Steel
80002072	Bolt Kit, Duralite, Penta Bolt, Washer, Nut (Set of 2)	1/2" 6 x 2-1/2"	Stainless Steel
80002073	Bolt Kit, Duralite, Hex Bolt, Washer, Nut (Set of 2)	1/2" 13 x 2-1/2"	Stainless Steel
80002075	Bolt Kit, Duralite, Penta Bolt, Washer, Nut (Set of 2)	1/2" 13 x 2-1/2"	Stainless Steel
80002075	Bolt Kit, Duralite, Hex Bolt, Washer, Nut (Set of 2)	3/8" 16 x 2-1/2"	Stainless Steel
80002076	Bolt Kit, Duralite, Penta Bolt, Washer, Nut (Set of 2)	3/8" 16 x 2-1/2"	Stainless Steel

Marking Plates, Composite

31901010	Marking Plate, Electric	4" x 8"	Plastic
31901030	Marking Plate, Traffic Signal	4" x 8"	Plastic
31901040	Marking Plate, Street Lighting	4" x 8"	Plastic
31901050	Marking Plate, High Voltage	4" x 8"	Plastic
31901070	Marking Plate, Lighting	4" x 8"	Plastic
31901020	Marking Plate, Communication	4" x 8"	Plastic
31901021	Marking Plate, Telephone	4" x 8"	Plastic
31901060	Marking Plate, CATV	4" x 8"	Plastic
31901061	Marking Plate, Fiber Optics	4" x 8"	Plastic

CUSTOM MARKING OPTIONS AVAILABLE: 2 rows of lettering, 13 characters per row. Contact customer service for custom and specialty options.

DURALITE™ SURPRISINGLY LIGHT. EXCEPTIONALLY STRONG.

BOLT DOWN MARKING PLATE SYSTEM

Simplify lid inventory and customize your enclosures at the time of installation. Our polymer concrete and composite lids available on the Duralite™ boxes feature a molded-in recess to allow marking plates to be installed at the factory, distribution center, or customer location. A wide variety of standard markings are available as listed in this document in addition to custom plate markings.



INSTALLATION GUIDELINES AND INSTRUCTIONS

For optimum results, the lid and marking plate should be clean and dry. The marking plate will have a grid pattern on the back side.

1

Apply a moderate amount of Surebond SB-12 adhesive (approximately 1/8" bead) in a wave-like pattern with a border (see figure 2) starting and ending approximately 3/8" from pocket sides. Using excessive adhesive will slow curing process.

2

Place marking plate in pocket (figure 3) and apply continual pressure to the top of the plate for 10 seconds.

3

Adjust marking plate to the center of the pocket and ensure it is below or flush with the lid surface before adhesive sets.

4

Tack-free time is 10-20 minutes and full cure is approximately 24 hour.

5

Using the spanner bit, screw the two spanner bolts hand-tight into the holes of the marking plate.



Figure 1



Figure 2



Figure 3

NOTES



Count on Oldcastle Enclosure Solutions to deliver reliable, high-performance products to allow for a safer and more successful project.



FOR MORE INFORMATION CALL

(800) 735-5566



VISIT OUR WEBSITE

OldcastleEnclosures.com

At Oldcastle Enclosure Solutions, we understand what makes your projects successful — the right enclosure, for the right location, for the right application. That's why we're dedicated to providing innovative, high-quality solutions to meet every application and the reliable service to back it up.

We leverage our footprint and manufacturing portfolio of the world's leading brands in grade-level utility boxes to create optimal solutions for Electrical, Communications, Water and Irrigation markets.

We believe our solutions do more than simply support infrastructure, that that our solutions keep our communities running strong.