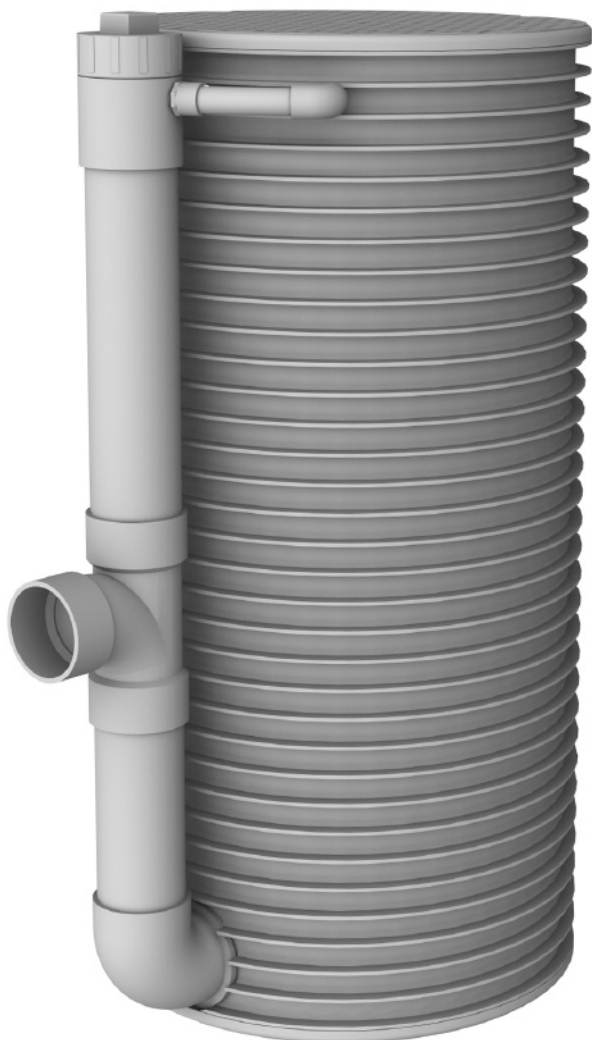


# PVC Pump Basins

## Applications

Orenco® PVC Pump Basins are designed to house effluent, sewage, or grinder pumps in wastewater pumping applications. They are not IAPMO listed.



*24-inch (600-mm) PB24XX PVC Pump Basin  
(Shown with optional cleanout and vent)*

## General

Orenco® PVC Pump Basins come in 18-, 24-, and 30-inch (450-, 600-, and 762-mm) diameters. Lids and bases are fiberglass; lids are fastened with stainless steel bolts, bases are attached with epoxy. Watertight EPDM grommets seal all piping penetrations. A 4-inch (100-mm) inlet elbow and holes to accommodate splice boxes and discharge piping are located and sized to specific need. Optional equipment is available.

## Standard Models

PB1854, PB2154, PB2454, PB3054

(See page 2 for Product Code Diagram. Custom basins are available for specific configurations.)

## Materials of Construction

Ribbed pipe	PVC
Lid and base	Fiberglass reinforced polyester
Fastening bolts	Stainless steel
Grommets	EPDM

## Specifications

Model	O.D., in. (mm)	I.D., in. (mm)	Liquid capacity gal./in. (L/mm)
PB18XX	18 (450)	17.50 (445)	1.06 (0.16)
PB24XX	24 (600)	23.50 (597)	1.88 (0.28)
PB30XX	32 (810)	29.50 (749)	2.96 (0.44)

## Product Code Diagram

PB    +  +  +

Discharge grommet option, in. (mm):

Blank = no discharge grommet

10 = 1 (25)

12 = 1¼ (32)

15 = 1½ (38)

20 = 2 (50)

Splice box grommet or splice box options (choose one):

Blank = no grommet or splice box

or

S = grommet installed, 1-in. (25-mm), fits SB1-SB4

L = grommet installed, 1¼-in. (32-mm), fits SB5-SB6

SX = grommet installed, for Orenco® external splice box\*

or

S1 = grommet and SB1 internal splice box installed

S2 = grommet and SB2 internal splice box installed

S3 = grommet and SB3 internal splice box installed

S4 = grommet and SB4 internal splice box installed

L5 = grommet and SB5 internal splice box installed

L6 = grommet and SB6 internal splice box installed

or

XS = grommet and simplex explosion-proof splice box installed†

XD = grommet and duplex explosion-proof splice box installed†

XT = grommet and triplex explosion-proof splice box installed†

Cleanout vent option:

Blank = no cleanout

COV = cleanout vent included

Flow inducer option:

Blank = no flow inducer

FI = flow inducer included

Basin height, in. (mm):

54 = 54 (1372-mm)

60 = 60 (1524-mm)

66 = 66 (1676-mm)

72 = 72 (1829-mm)

Basin diameter, in. (mm):

18 = 18 (450-mm)

24 = 24 (600-mm)

30 = 30 (750-mm)

Pump basin, PVC

\* Requires minimum 18-in. (457-mm) riser height

† For Class I Division I environments