



PIONEER INDUSTRIES, INC.
3325 S. Garfield Ave.
Commerce, CA 90040
(800) 338-9468
www.pioneerind.com

INSTALLATION

Tools:



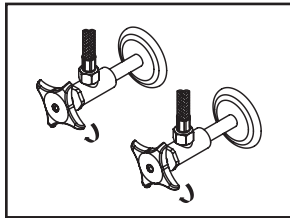
Model Number: 2LG250, 2MT250, 2MT251, 2MT260, 2MT261,

Warnings and Notes:

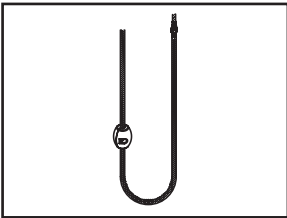
Check with local plumbing code requirements before installation.
This product should be installed by a local listed plumber.
Do not use plumbers putty on threads.

Installation Steps:

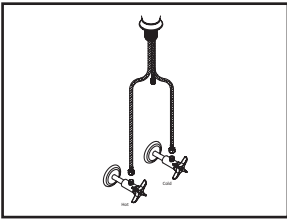
Single Handle Pull-Down Kitchen Faucet



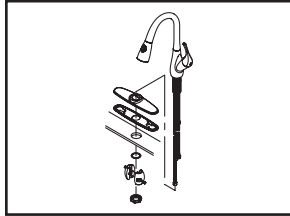
(1) Shut off water supplies. Remove old faucet. Clean mounting surface in preparation for new faucet.



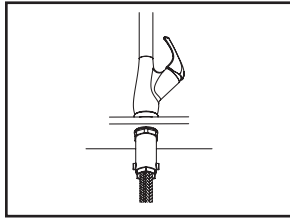
(2) For 1-Hole Installation:- Make sure washer is under escutcheon, slide escutcheon for 1-hole installation to the faucet body. Insert faucet through mounting hole.



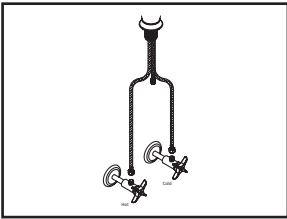
(3) **For 3-Hole Installation:-** Install supplied deck plate underneath of the faucet. Apply plumbers putty under the base gasket. Place the faucet in position on the sink.



(4) From under the sink thread locknut to the faucet. Tighten the locknut with the help of supplied mounting tool.



(5) Connect pull-down spray head hose to the outlet hose. Install the weight on the pull-down spray head hose. Adjust the weight so that the pull-down spray head is retractable.



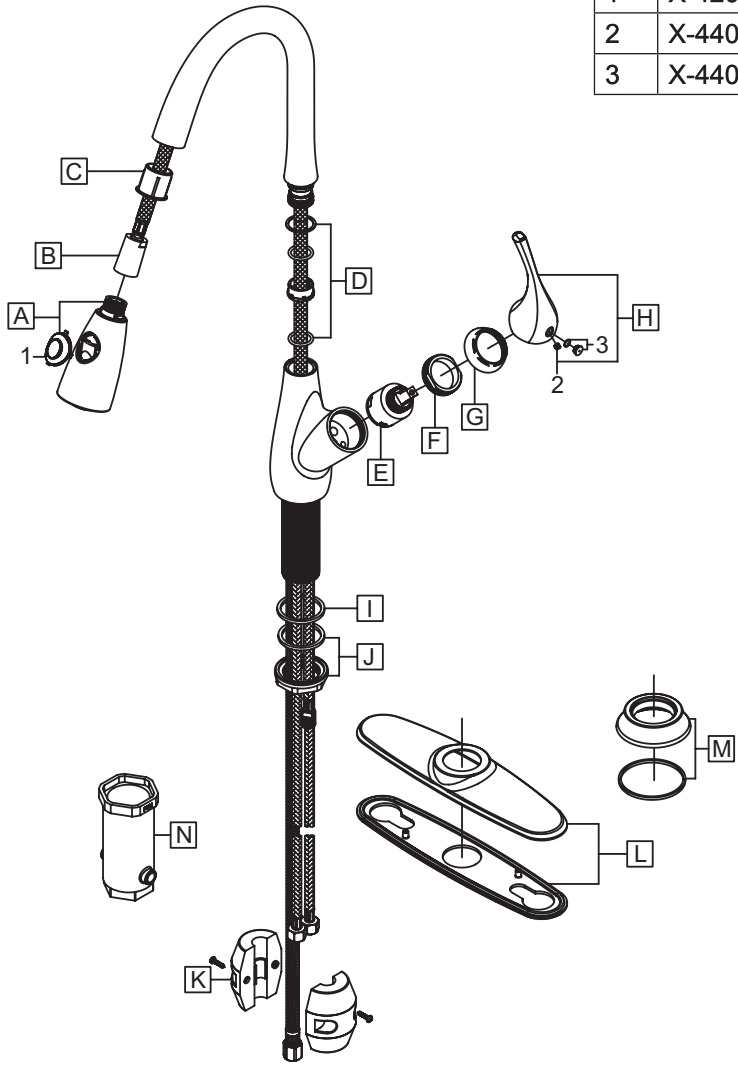
(6) Connect hot and cold inlet supply hoses to supply stops. For 1/2" connection; use 3/8" male to 1/2" female adapter for installation. Adapters are optional and not provided with the faucet.



Exploded Drawing (2LG250):

* Note: Please specify finish/color when ordering.

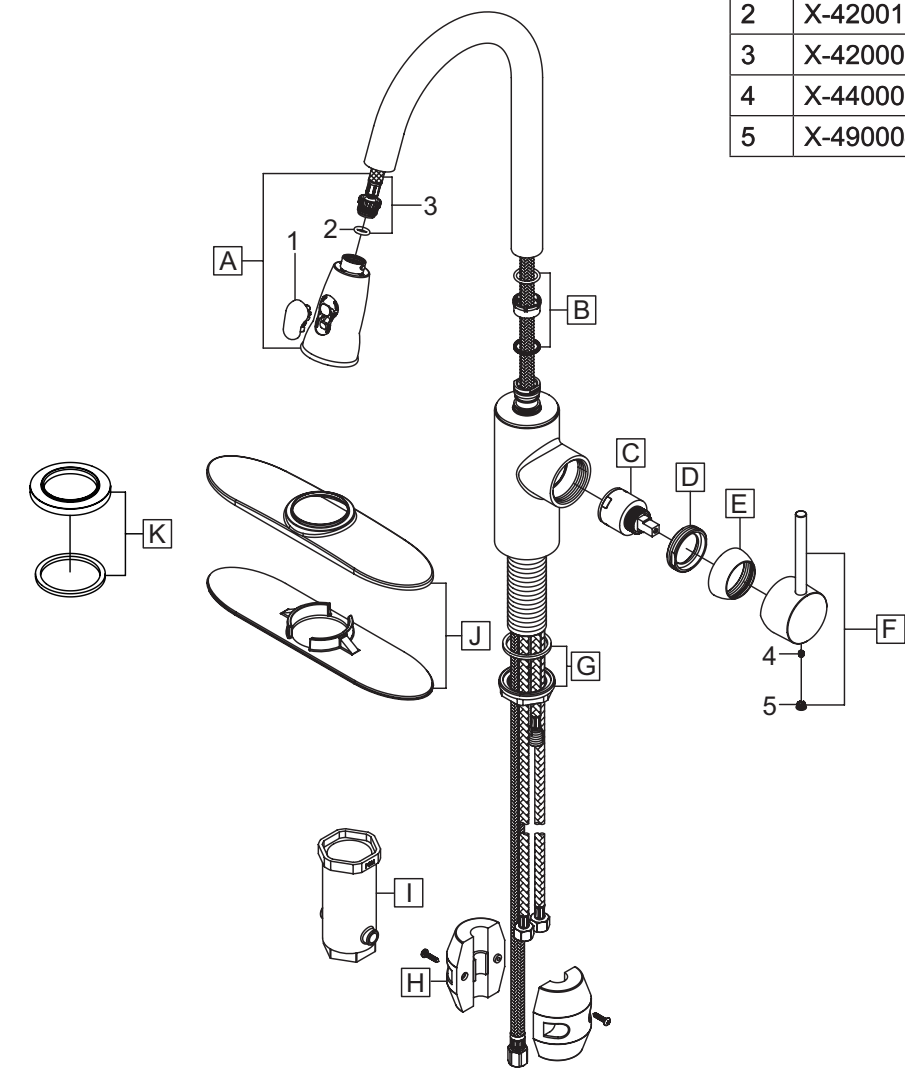
	ITEM #	DESCRIPTION
A	X-4200179*	1.8 GPM Pull-Down Spray Head
B	X-4200111	Spray Hose
C	X-4200148	Spray Head Support
D	X-4200112	Spout Repair Kit
E	X-3900008	Ceramic Disc Cartridge
F	X-4200002	Retainer Nut
G	X-4200001*	Cap
H	X-1200016*	Lever Handle
I	X-4200113	Washer
J	X-5200019	Mounting Kit
K	X-4200186	Weight
L	X-4200169*	Deck Plate
M	X-4200152*	Escutcheon
N	X-5200021	Mounting Tool
1	X-4200176	Spray Head Button
2	X-4400024	Allen Screw
3	X-4400073*	Hole Cover



Exploded Drawing (2MT250):

* Note: Please specify finish/color when ordering.

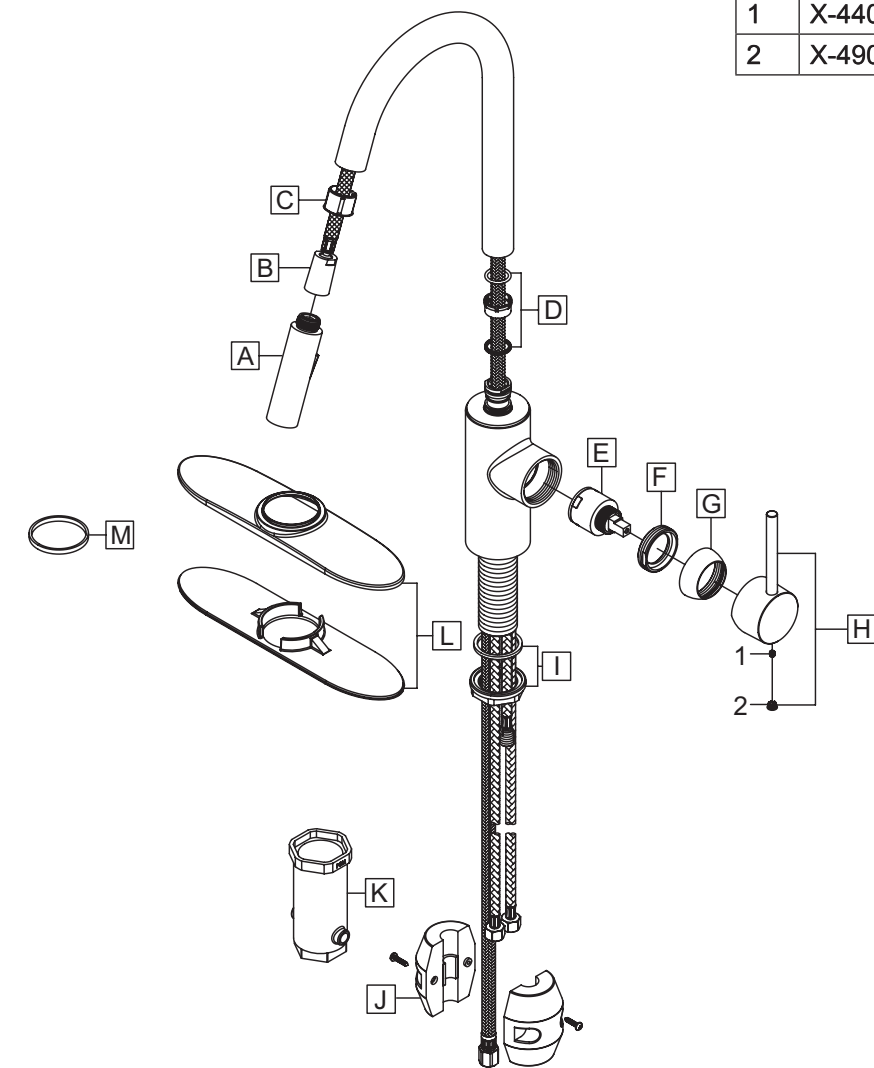
	ITEM #	DESCRIPTION
A	X-4200180*	1.8 GPM Pull-Down Spray Head
A	X-4200108*	1.5 GPM Pull-Down Spray Head
B	X-4200191	Spout Repair Kit
C	X-3900008	Ceramic Disc Cartridge
D	X-4200192	Retainer Nut
E	X-4400032*	Cap
F	X-1200024*	Motegi Lever Handle
G	X-5200019	Mounting Kit
H	X-4200186	Weight
I	X-5200021	Mounting Tool
J	X-4200075*	Deck Plate
K	X-4200074*	Escutcheon
1	X-4200170	Spray Head Button
2	X-4200171	O-Ring
3	X-4200073	Spray Hose and O-ring
4	X-4400024	Allen Screw
5	X-4900044*	Hole Cover



Exploded Drawing (2MT260):

* Note: Please specify finish/color when ordering.

	ITEM #	DESCRIPTION
A	X-4200181*	1.8 GPM Pull-Down Spray Head
B	X-4200111	Spray Hose
C	X-4200178	Spray Head Support
D	X-4200191	Spout Repair Kit
E	X-3900008	Ceramic Disc Cartridge
F	X-4200192	Retainer Nut
G	X-4400032*	Cap
H	X-1200024*	Motegi Lever Handle
I	X-5200019	Mounting Kit
J	X-4200186	Weight
K	X-5200021	Mounting Tool
L	X-4200075*	Deck Plate
M	X-4200187	Washer
1	X-4400024	Allen Screw
2	X-4900044*	Hole Cover



For more care information or trouble shooting inquiries
about your Pioneer product, please call:
Pioneer Industries, Inc. (800) 338-9468
Monday-Friday 8 AM to 8 PM EST (5 AM to 5 PM PST)
www.pioneerind.com