



OLYMPIA FAUCETS, INC.

Interchange City Distribution Center #20
1277 Heil Quaker Boulevard
La Vergne, TN 37086
(888) 772-7701
www.olympiafaucets.com

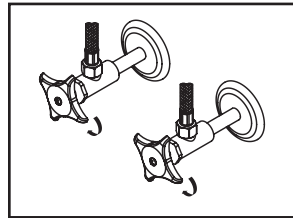
Model Number: L-601X, L-601X-WD, L-602X, L-602X-WD, L-605X, L-605X-WD

Warnings and Notes:

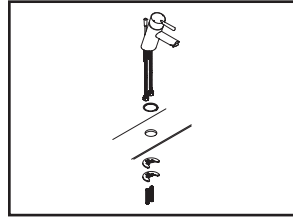
Check with local plumbing code requirements before installation.
This product should be installed by a local listed plumber.
Do not use plumbers putty on threads.

Installation Steps:

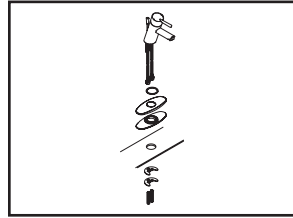
Single Handle Lavatory Faucet



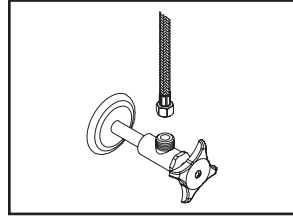
(1) Shut off water supply. Remove old faucet. Clean mounting surface in preparation for new faucet.



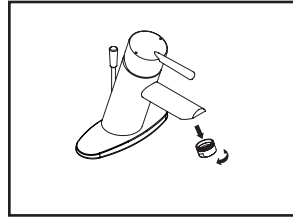
(2) **For 1 Hole Installation:-** Install mounting bolts to the bottom of faucet. Slide gasket over inlet supply hoses and mounting bolts, place faucet in position on the sink. Place mounting kit over mounting bolts under sink, rubber gasket first then metal bracket, secure mounting bolts with mounting nuts.



(3) **For 3-Hole Installation:-** Install mounting bolts to the bottom of faucet. Slide gasket and deck plate over inlet supply hoses and mounting bolts, place faucet in position on the sink. Place mounting kit over mounting bolts under sink, rubber gasket first then metal bracket, secure mounting bolts with mounting nuts.



(4) Connect hot and cold inlet supply hoses to supply stops. For 1/2" connection use 3/8" male to 1/2" female adapter for installation. Adapters are optional and not provided with the faucet.



(5) Important: After installation is complete, turn on both supply stops, remove aerator and turn on handle, allow both hot and cold water to run at least one minute each. While water is running, check for leaks. Turn off handle and replace aerator.

Tools:



Adjustable Wrench



Plumbers Putty



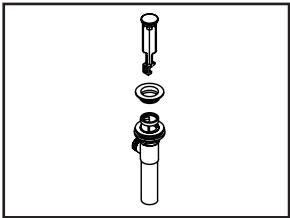
Sealant Tape



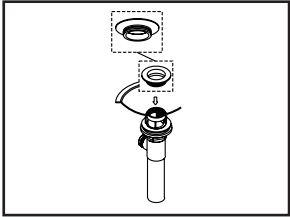
Rags



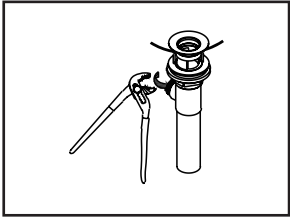
Pop-Up Drain Installation:



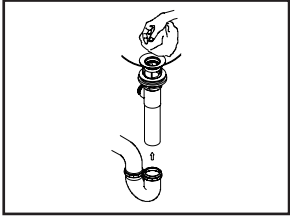
(1) Remove pop-up flange from body.



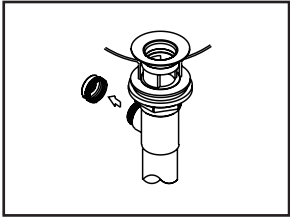
(2) Place a ring of putty on the bottom of flange.



(3) Insert pop-up flange through drain hole and attach flange to body. Ensure the pop-up outlet faces towards the back of the sink. Tighten the locknut securely with a wrench. Do not overtighten.

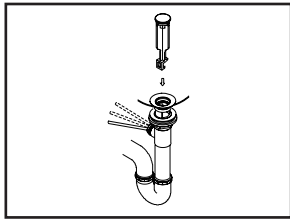


(4) Remove the excess putty. Connect the trap (check manufacturer's instructions for installation)

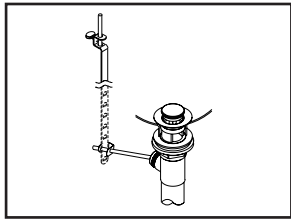


(5) Remove pivot rod nut from pop-up body, ensure the washers is in place, insert pivot rod, tighten pivot rod nut back to pop-up body.

INSTALLATION



(6) Push pivot rod down, insert drain plug carefully. Test to ensure drain plug works properly.

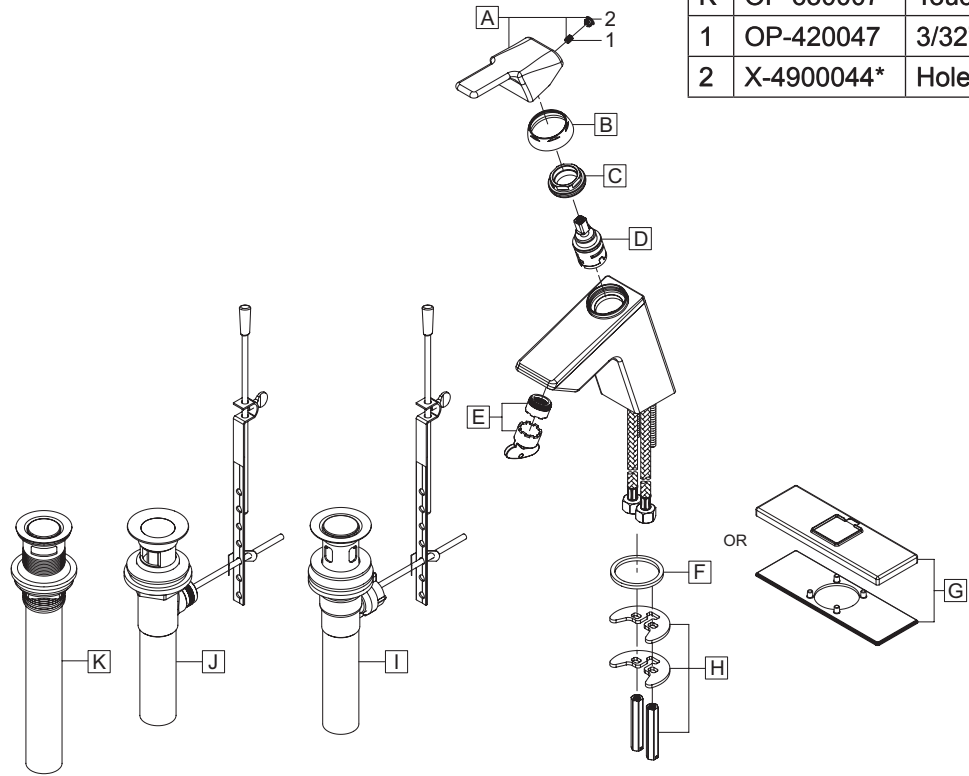


(7) Connect lift rod strap to pivot rod by using clip. Tighten the thumbscrew to connect lift rod strap to pop-up lift rod.

Exploded Drawing: (L-601X,L601X-WD)

* Note: Please specify finish/color when ordering.

	ITEM #	DESCRIPTION
A	OP-130002*	Lever Handle
B	OP-430021*	Cap
C	OP-430032	Locknut
D	X-3300006	Ceramic Disc Cartridge
E	OP-490062	1.2 GPM Laminar
F	OP-430033	Gasket
G	X-4300087*	Deck Plate (For L-6010-WD, L-6011-WD, L-6012-WD)
H	OP-530005	Mounting Kit
I	OP-630005*	50/50 Pop-Up Drain Assembly (For L-6010(-WD))
J	OP-630006*	Brass Pop-Up Drain Assembly (For L-6012(-WD))
K	OP-630007*	Touch Down Drain (For L-6013)
1	OP-420047	3/32" Allen Screw
2	X-4900044*	Hole Cover

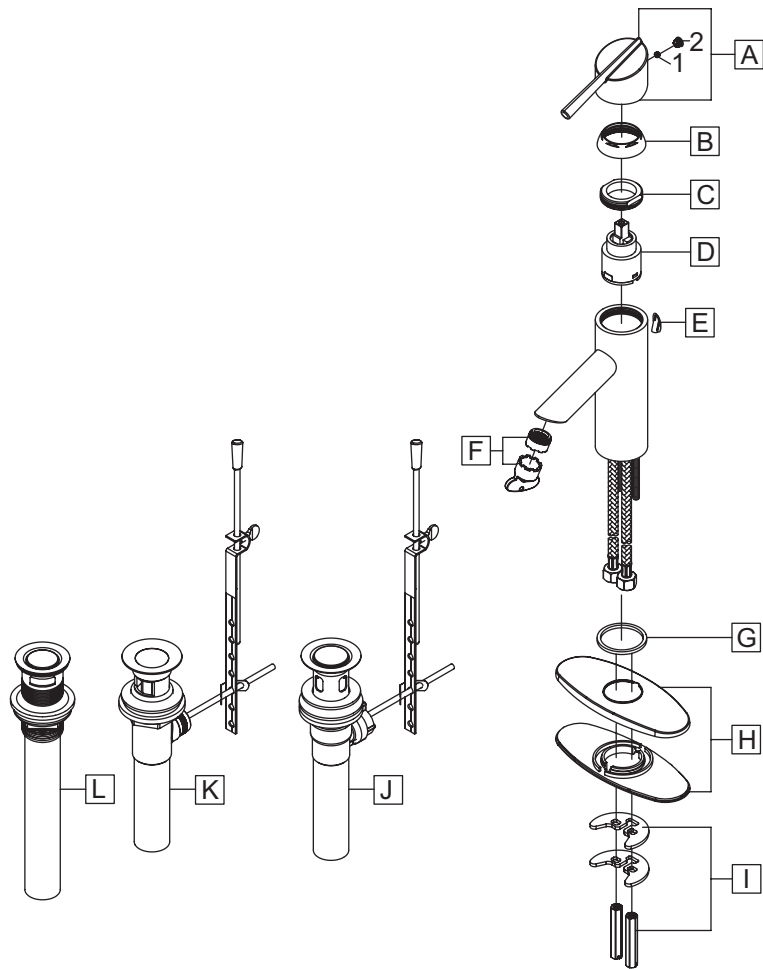


For more care information or trouble shooting inquiries about your Olympia product, Please call:
OLYMPIA FAUCETS, INC. (888) 772-7701
Monday-Friday 8AM to 8PM EST (5AM to 5PM PST)
www.olympiafaucets.com

Exploded Drawing: (L-602X,L602X-WD)

* Note: Please specify finish/color when ordering.

	ITEM #	DESCRIPTION
A	OP-130003*	Lever Handle
B	OP-430021*	Cap
C	OP-420042	Locknut
D	OP-320002	Ceramic Disc Cartridge
E	OP-430023*	Hole Cover (For L-6021(-WD), L-6023)
F	OP-490062	1.2 GPM Laminar
G	OP-430025	Gasket
H	OP-430026*	Deck Plate (For L-6020-WD, L-6021-WD, L-6022-WD)
I	OP-530005	Mounting Kit
J	OP-630005*	50/50 Pop-Up Drain Assembly (For L-6020(-WD))
K	OP-630006*	Brass Pop-Up Drain Assembly (For L-6022(-WD))
L	OP-630007*	Touch Down Drain (For L-6023)
1	OP-420061	3/32" Allen Screw
2	X-4900044*	Hole Cover

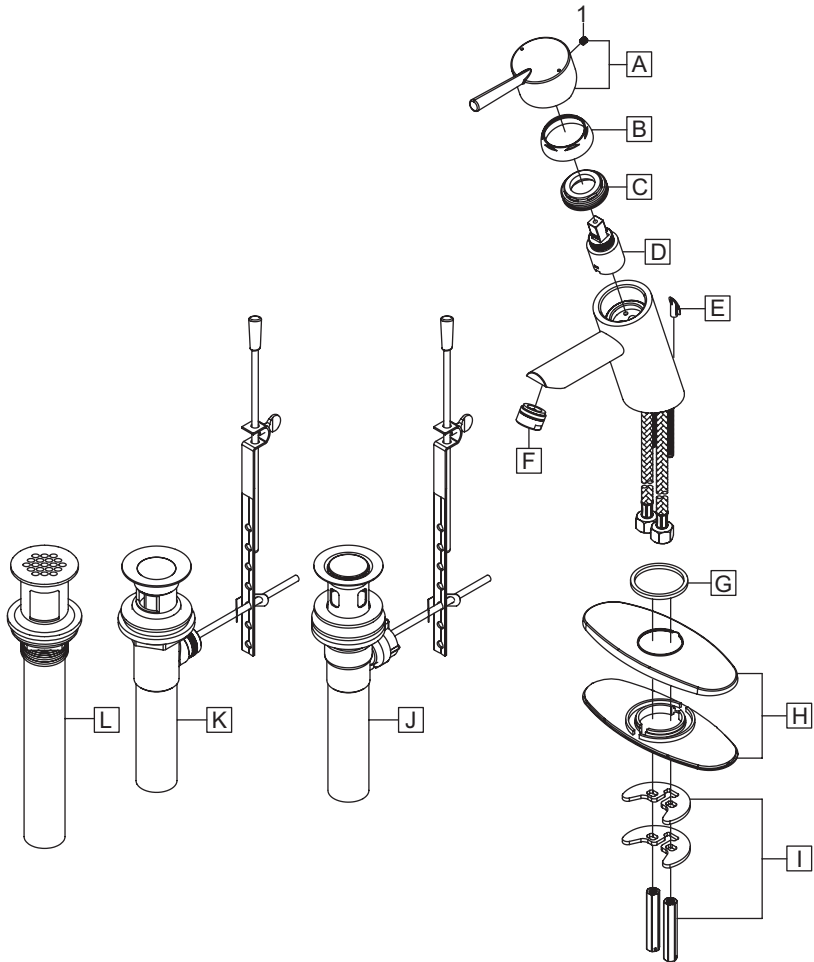


For more care information or trouble shooting inquiries
about your Olympia product, Please call:
OLYMPIA FAUCETS, INC. (888) 772-7701
Monday-Friday 8AM to 8PM EST (5AM to 5PM PST)
www.olympiafaucets.com

Exploded Drawing: (L-605X,L605X-WD)

* Note: Please specify finish/color when ordering.

	ITEM #	DESCRIPTION
A	OP-130001*	Lever Handle
B	OP-430021*	Cap
C	OP-430022	Locknut
D	OP-390003	Ceramic Disc Cartridge
E	OP-430023*	Hole Cover (For L-6051(-WD), L-6051G(-WD))
F	OP-490063*	1.2 GPM Aerator
G	OP-430025	Gasket
H	OP-430026*	Deck Plate (For L-605X-WD)
I	OP-530005	Mounting Kit
J	OP-630005*	50/50 Pop-Up Drain Assembly (For L-6050(-WD))
K	OP-630006*	Brass Pop-Up Drain Assembly (For L-6052(-WD))
L	OP-630001*	Brass Grid Strainer Drain Assembly (For L-6051G(-WD))
1	OP-490029	3/32" Allen Screw



For more care information or trouble shooting inquiries
about your Olympia product, Please call:
OLYMPIA FAUCETS, INC. (888) 772-7701
Monday-Friday 8AM to 8PM EST (5AM to 5PM PST)
www.olympiafaucets.com