



#### OLYMPIA FAUCETS, INC.

Interchange City Distribution Center #20  
1277 Heil Quaker Boulevard  
La Vergne, TN 37086  
(888) 772-7701  
www.olympiafaucets.com

**Model Number:** L-6160,L-6170,L-6180,L-6161  
L-6171,L-6181,L-6162,L-6172,L-6182

#### Warnings and Notes:

Check with local plumbing code requirements before installation.  
This product should be installed by a local listed plumber.  
**Do not use plumbers putty on threads.**

## INSTALLATION

#### Tools:



Adjustable Wrench



Plumbers Putty



Sealant Tape

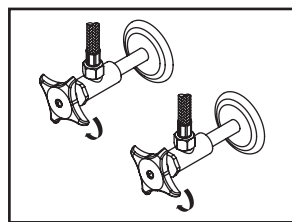


Rags

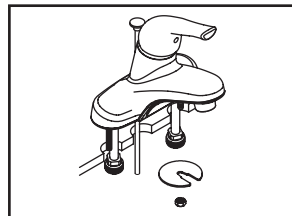


### Installation Steps:

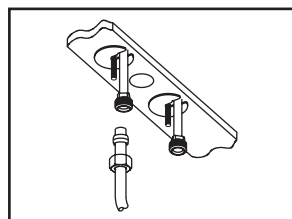
#### Single Handle Lavatory Faucet



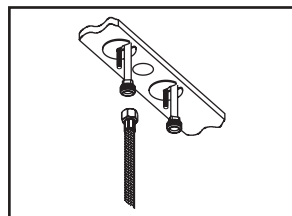
(1) Shut off water supplies. Remove old faucet. Clean mounting surface in preparation for new faucet.



(2) Place the faucet in position on the sink. Apply plumbers putty under the base gasket. Place washer and tighten with locknut.



(3a) When using ball-nose flexible supplies to connect faucet to water supply lines, slip coupling nut onto flexible supply. Ball-nose coupling will go partially into shank. Tighten coupling nut (DO NOT OVER TIGHTEN). Install opposite end according to manufacturer's instruction for both tubes.

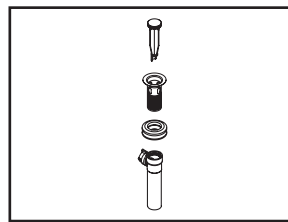


(3b) When using stainless steel braided faucet supply hose, this faucet requires one end of the supply hose to have a 1/2" female IPS connection. The other end of this supply hose must match the thread on the water supply valve under your sink. Once you've identified the required size, carefully follow the manufacturer's installation instructions for each hose.

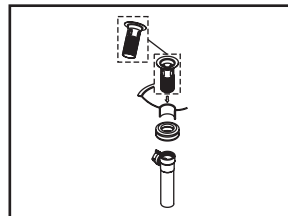


(4) Important: After installation is complete, remove aerator. Turn water supply on and allow both hot and cold water to run at least one minute each. While water is running, check for leaks. Turn off water and replace aerator.

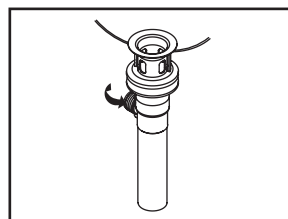
### Pop-up Drain Installation:



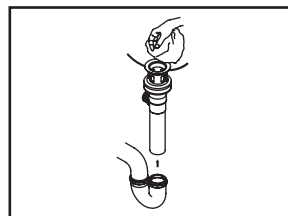
(1) Remove pop-up flange from body



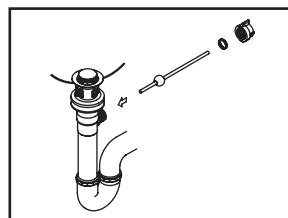
(2) Place a ring of putty on the bottom of flange.



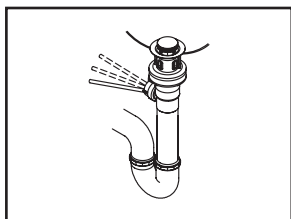
(3) Insert pop-up flange through drain hole and attach flange to body. Ensure the pop-up outlet faces towards the back of the sink. Tighten the locknut securely with a wrench. Do not overtighten.



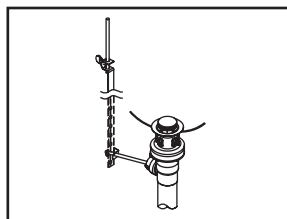
(4) Remove the excess putty. Connect the trap (check manufacturer's instructions for installation).



(5) Remove pivot rod nut from pop-up body, ensure the washers is in place, insert pivot rod, tighten pivot rod nut back to pop-up body.



(6) Push pivot rod down, insert drain plug carefully. Test to ensure drain plug works properly.

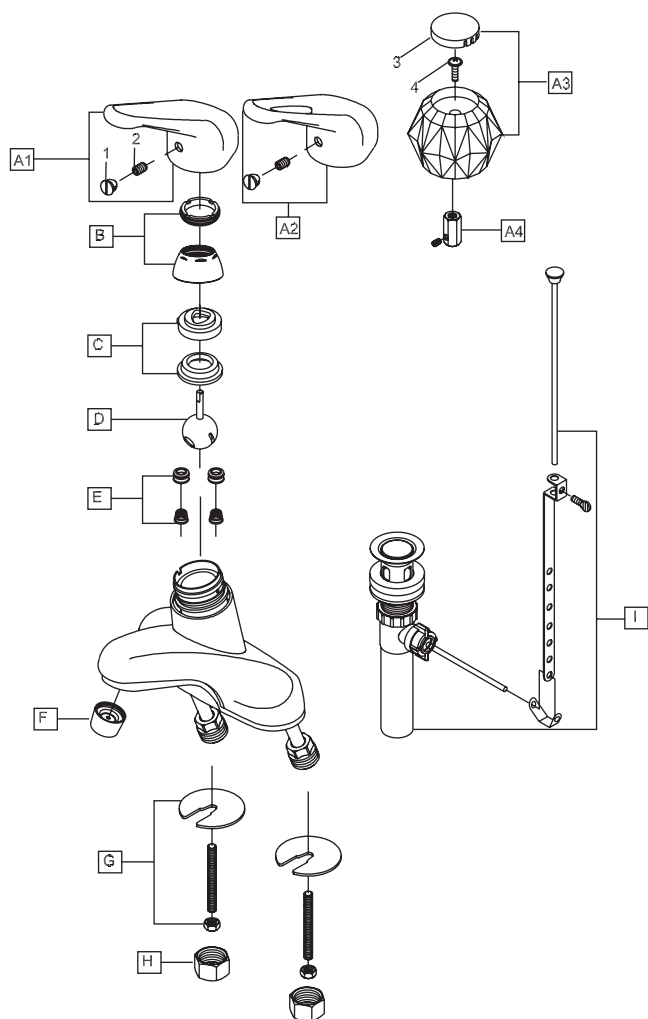


(7) Connect lift rod strap to pivot rod by using clip. Tighten the thumbscrew to connect lift rod strap to pop-up lift rod.

## Exploded Drawing:

\* Note: Please specify finish/color when ordering.

	ITEM #	DESCRIPTION
A1	OP-190001*	Metal Lever Handle
A2	OP-190002*	Metal Loop Handle
A3	OP-190008	Acrylic Ball Handle
A4	OP-490023	Acrylic Handle Adapter
B	OP-490003*	Cap & Adjusting Ring
C	OP-490004	Cam & Washer
D	OP-390001	Stainless Steel Ball
E	OP-490041	Springs & Seats
F	OP-490035*	1.5 GPM Aerator
G	OP-530001	Mounting Kit
H	OP-590001	Supply Nut
I	OP-630004* OP-630002*	50/50 Pop-Up Drain Assembly Brass Pop-Up Drain Assembly
1	OP-490002	Hot & Cold Indicator
2	OP-490043	Allen Screw
3	OP-490021	Acrylic Ball Handle Button
4	OP-490022	Acrylic Ball Handle Screw



For more care information or trouble shooting inquiries about your Olympia product, Please call:

**OLYMPIA FAUCETS, INC.** (888) 772-7701

8AM - 8PM EST (5AM to 5PM PST)

[www.olympiafaucets.com](http://www.olympiafaucets.com)