



**JAY R. SMITH MFG. CO.**  
MEMBER OF MORRIS GROUP INTERNATIONAL  
POST OFFICE BOX 3237  
MONTGOMERY, ALABAMA 36109-0237 (USA)  
TEL: 334-277-8520 FAX: 334-272-7396 www.jrsmith.com



LOCATION

# ROOF ACCESSORY

## DOWNSPOUT NOZZLE

**FUNCTION:** Used as a parapet overflow or at the base of a wall where a concealed leader discharges rainwater to ground. Nozzle design diverts water away from building, eliminating wall stains. Wall flange covers rough opening.

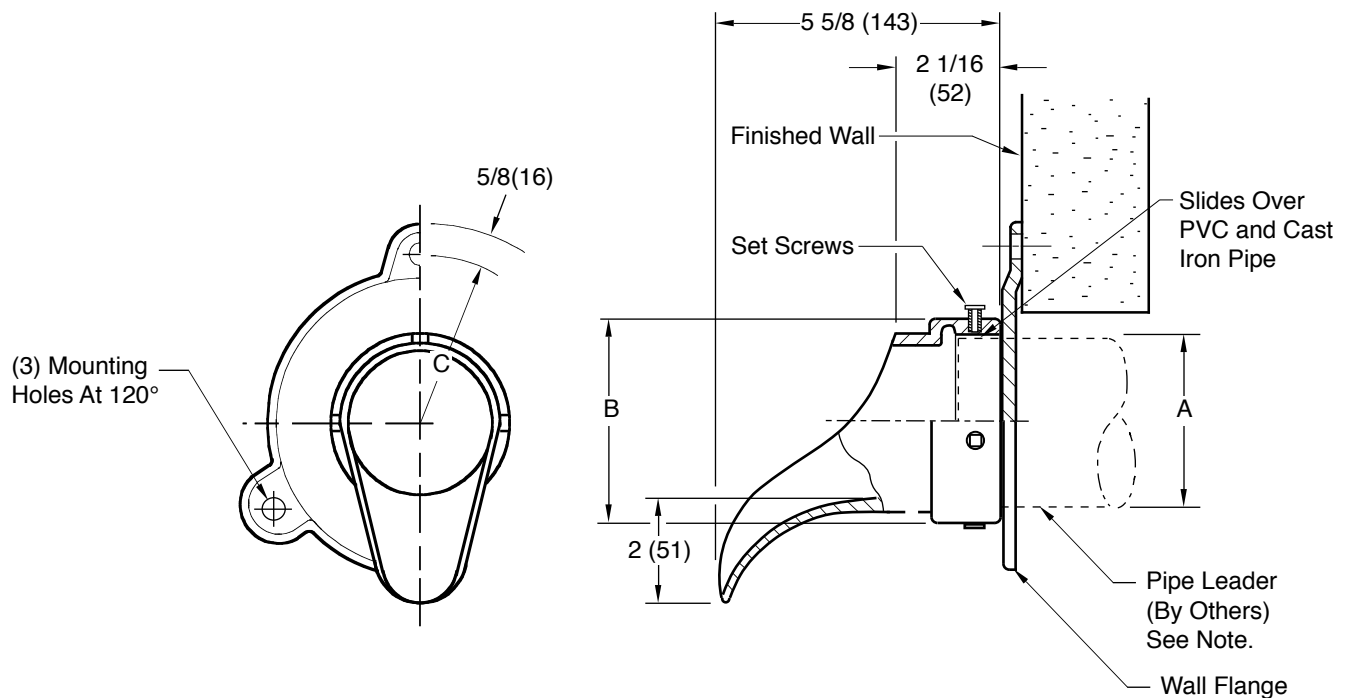


Fig. 1771

**NOTE:** Pipe (Leader) must extend past the face of the finished wall in order to install the wall flange and attach the downspout nozzle. Dimension shall be field determined by installer.

**NOTE:** Dimensions shown in parentheses are in millimeters.

A = Pipe Size	02 (50)	03 (75)	04 (100)	05 (125)	06 (150)	08 (200)	10 (250)	12 (305)
B = DIA	2 3/4 (70)	4 (100)	5 (125)	6 (150)	7 1/4 (185)	9 1/4 (235)	11 1/8 (283)	13 1/4 (335)
C = RAD	2 3/4 (70)	3 1/2 (89)	3 7/8 (98)	4 3/8 (111)	5 (125)	5 7/8 (149)	7 1/4 (185)	8 (205)

**REGULARLY FURNISHED:**  
Cast Bronze Nozzle and Flange,  
Machined Nozzle Slides Over  
PVC and Cast Iron Pipe.

**VARIATIONS:**  
☐ Bird Screen-BS

**OPTIONAL MATERIALS:**  
☐ Nickel Bronze -NB  
☐ Polished Bronze -PB

DRAWING NUMBER  
S1771

SIZE  
A

SCALE:  
NONE

DATE:  
09/01/09

APPROVED BY:  
CL

CHECKED BY:  
CL

DRAWN BY:  
JJ

1771

FIGURE  
NUMBER

WE CAN ASSUME NO RESPONSIBILITY FOR USE OF SUPERSEDED OR VOID DATA

DIMENSIONS ARE SUBJECT TO MANUFACTURERS TOLERANCE AND CHANGE WITHOUT NOTICE

REV.	DATE	DESCRIPTION	BY	CKD. BY

WEIGHT  
POUNDS

VOLUME  
CUBIC FEET

FIGURE NUMBER

1771



**WARNING:** Cancer and Reproductive Harm - www.P65Warnings.ca.gov