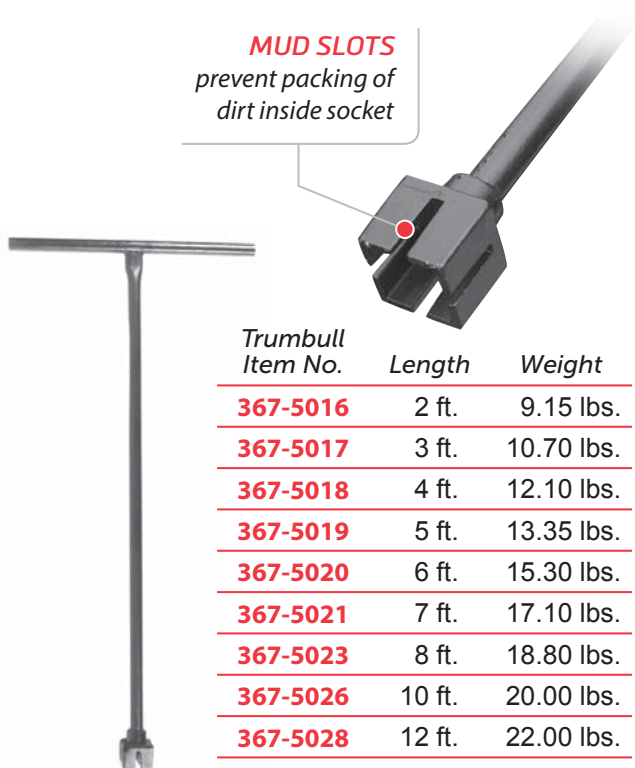


Valve & Curb Keys & Shutoff Rods

T-Handle Main Valve Keys

Stocked in lengths 2' through 12'.
1" Schedule 40 steel pipe shafts.
Cast steel socket fits 2" square operating nut.

MUD SLOTS
prevent packing of
dirt inside socket



| Trumbull Item No. | Length | Weight |
|-------------------|--------|------------|
| 367-5016 | 2 ft. | 9.15 lbs. |
| 367-5017 | 3 ft. | 10.70 lbs. |
| 367-5018 | 4 ft. | 12.10 lbs. |
| 367-5019 | 5 ft. | 13.35 lbs. |
| 367-5020 | 6 ft. | 15.30 lbs. |
| 367-5021 | 7 ft. | 17.10 lbs. |
| 367-5023 | 8 ft. | 18.80 lbs. |
| 367-5026 | 10 ft. | 20.00 lbs. |
| 367-5028 | 12 ft. | 22.00 lbs. |

Buffalo Type Curb Box Rods

Stocked in 30" and 36" lengths.
Made of 1/2" square carbon steel with ductile iron end casting. Furnished with brass cotter pin.



| Trumbull Item No. | Length | Weight |
|-------------------|--------|-----------|
| 367-4230 | 30" | 3.00 lbs. |
| 367-4232 | 36" | 3.50 lbs. |

Erie/Minneapolis Type Curb Box Rods

Furnished with brass cotter pin.

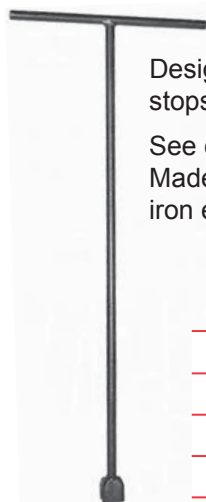


| Trumbull Item No. | Length | Weight |
|-------------------|--------|-----------|
| 367-4084 | 24" | 3.10 lbs. |
| 367-4085 | 30" | 3.20 lbs. |
| 367-4087 | 36" | 3.70 lbs. |
| 367-4090 | 42" | 4.20 lbs. |
| 367-4092 | 48" | 4.70 lbs. |

#1302 Curb Stop Wrenches

Designed to shut off 3/4" through 2" curb stops. Fits directly on t-head of curb stops.

See chart below for stock lengths.
Made of 5/8" round carbon steel with ductile iron end casting.



| Trumbull Item No. | Length | Weight |
|-------------------|--------|------------|
| 367-4293 | 3 ft. | 4.00 lbs. |
| 367-4294 | 4 ft. | 6.00 lbs. |
| 367-5025 | 6 ft. | 8.00 lbs. |
| 367-4296 | 8 ft. | 10.00 lbs. |

Gate Valve Speed Wrench

Ideal for operating valves with 2" AWWA nut, either in the trench or in the yard.

Allows use of both hands for extra leverage. Revolving handle allows quick opening and closing.



| Trumbull Item No. | Handle Length | Weight |
|-------------------|---------------|-----------|
| 367-9981 | 18" | 6.20 lbs. |

NOTE: For special lengths not shown above, please inquire.

#1306 & #1322 Curb Box Keys

For **ERIE & MINNEAPOLIS** Type Boxes

Made of 5/8" carbon steel.

#1306 Style

FORK END
of both keys fits
in a curb box lid
with 2 holes

#1322 Style

PICK END
is used to clear
ice and dirt from
the box lid

SOCKET END
of #1306 key
fits the plug in a
curb box lid with
a pentagon nut.
(See close-up of
#1305 socket in
right column)

SLOTTED END

For use on Erie & Minneapolis
style rods. Will fit inside a curb box
with a 1" pipe upper section

| Length | Weight | #1306 Item No. | #1322 Item No. |
|--------|------------|-------------------|-------------------|
| 2 ft. | 5.00 lbs. | 367-4277 | spec/ord |
| 3 ft. | 7.00 lbs. | 367-4278 | 367-5278 |
| 4 ft. | 9.00 lbs. | 367-4280 | 367-5280 |
| 5 ft. | 11.00 lbs. | 367-4276 | spec/ord |
| 6 ft. | 13.00 lbs. | 367-4275 | spec/ord |
| 7 ft. | 15.00 lbs. | 367-4274 | spec/ord |

SEE
PAGE A-13
FOR TRUMBULL'S
PENTAGON HAND
KEYS!



#1305 & #1321 Combination Curb Box Keys

For **BUFFALO** Type Boxes

Made of 5/8" round carbon steel
with cast steel combination casting.

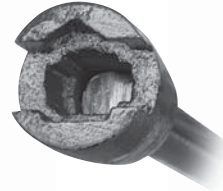
#1305 Style

Plain Tee
handle

#1321 Style

POINT END
for digging dirt or
ice away from lid

**FLAT
END**
like a
chisel

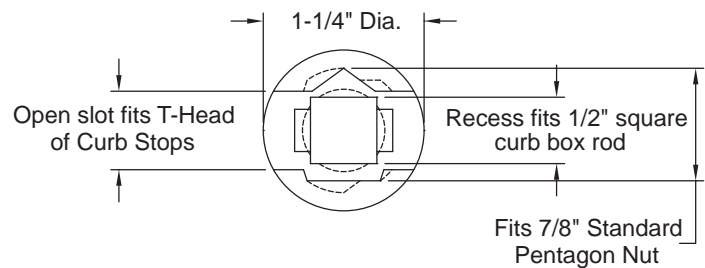


The casting on the bottom of
the keys is a multi-purpose
tool. It can be used on a pen-
tagon nut as well as a 1/2"
square rod, and will fit
directly on the t-head of a
curb or meter stop through 2".

When used on pentagon
bolt of meter box covers,
automatically attaches to
lift and hold the lid.

THE COMBINATION SOCKET

End View



Stocked in the following lengths:

| Length | Weight | #1305 Item No. | #1321 Item No. |
|--------|-----------|-------------------|-------------------|
| 1 ft. | 3.00 lbs. | 367-4295 | 367-5295 |
| 3 ft. | 5.00 lbs. | 367-4291 | 367-5291 |
| 4 ft. | 6.00 lbs. | 367-4292 | 367-5290 |
| 6 ft. | 8.00 lbs. | 367-4297 | 367-5297 |

NOT for use with 1" Erie Style Boxes.

NOTE: For special lengths not shown above, please inquire.