

Uponor Logic for Radiant Floor Heating and Cooling is the ultimate in comfort control.



- Comfort
- Efficiency
- Advanced control systems
- Industry pioneer
- Proven
- Peace of mind

Uponor Radiant Heating and Cooling Systems

New and Innovative Solutions for Complete Radiant Systems

Uponor Multifunction Climate Cöntrol™ System

Simple, intelligent and very intuitive, the Multifunction Climate Cöntrol was designed with Uponor Logic to do everything better. It replaces all six of our previous pro Series models, and is made to run multiple proPANEL® pumping and mixing units with incredible ease. Now

multiple functionalities, like boiler staging, domestic hot water control, mixing, snowmelt and zone pumping can be controlled from one interface. It's one box, with one wiring schematic, one set-up and one easy, plug-and-play way to install.

- Increases functionality without adding cost
- Eliminates the need for multiple controls
- Fewer replacement parts
- Fully programmable with multiple built-in functions
- Simple and easy Cat5 connections and wires



- Simple plug-and-play connections, eliminating wiring confusion
- Low-voltage platform (24V)
- One controller can control multiple proPANEL® units, decreasing product and installation costs
- Easy to learn and operate
- Intuitive 5-button interface for easy setup and viewing

Uponor proPANEL® Pumping and Mixing Panels

Designed specifically to work with the Multifunction Climate Cöntrol, the new proPANEL products are an innovative pumping and mixing unit that only require four models to cover countless applications. Prewired

and fully assembled, this modular design allows multiple proPANEL units to be connected to one Multifunction Climate Cöntrol to give you flexible options for your unique jobs.

- More options for less money than previous models
- Updated hardware and circulators
- Modular, for use with other proPANEL® models for additional heating needs
- Quick one-person installation
- Increases functionality without increasing cost
- Small, compact design



- Eliminates multiple controls
- Easy wiring configuration; no confusion
- Purge capability and pump isolation included
- Less connections means less risk of leaks
- Decreased installation time and setup costs
- Quick and simple connection to Multifunction Climate Cöntrol™ hydronic controller

Uponor Radiant Heating and Cooling Systems

Barrier Tubing

Heat-transfer tubing for closed-loop hydronic heating and cooling applications with an EVOH oxygen diffusion barrier that meets the German DIN Standard 4726. Wirsbo hePEX™ plus tubing is compatible with Uponor's ProPEX®, APR and QS-style fittings and is manufactured to ASTM F876 and F877. Tubing is rated and listed by the Hydrostatic Stress Board of PPI at: 200°F at 80 psi, 180°F at 100 psi and 73.4°F at 160 psi.

Wirsbo hePEX Tubing, Coils



Part No.	Part Description	Coils/Pallet	List Price/Ea.
A1180313	5/16" Wirsbo hePEX plus, 250-ft. coil	40	\$262.10
A1220313	5/16" Wirsbo hePEX plus, 1,000-ft. coil	12	\$1,048.30
A1210375	3/8" Wirsbo hePEX plus, 400-ft. coil	18	\$420.15
A1220375	3/8" Wirsbo hePEX plus, 1,000-ft. coil	12	\$1,050.40
A1250500	1/2" Wirsbo hePEX plus, 300-ft. coil	18	\$333.85
A1220500	1/2" Wirsbo hePEX plus, 1,000-ft. coil	8	\$1,112.80
A1250625	5/8" Wirsbo hePEX plus, 300-ft. coil	12	\$396.25
A1220625	5/8" Wirsbo hePEX plus, 1,000-ft. coil	5	\$1,320.80
A1250750	3/4" Wirsbo hePEX plus, 300-ft. coil	12	\$471.10
A1240750	3/4" Wirsbo hePEX plus, 500-ft. coil	8	\$785.20
A1251000	1" Wirsbo hePEX plus, 300-ft. coil	5	\$786.25
A1241000	1" Wirsbo hePEX plus, 500-ft. coil	6	\$1,310.40
NEW A1141250	1 1/4" Wirsbo hePEX plus, 100-ft. coil	12	\$428.00
NEW A1251250	1 1/4" Wirsbo hePEX plus, 300-ft. coil	8	\$1,284.00
NEW A1141500	1 1/2" Wirsbo hePEX plus, 100-ft. coil	5	\$585.00
NEW A1251500	1 1/2" Wirsbo hePEX plus, 300-ft. coil	5	\$1,755.00
NEW A1142000	2" Wirsbo hePEX plus, 100-ft. coil*	12	\$865.00
NEW A1252000	2" Wirsbo hePEX plus, 300-ft. coil*	6	\$2,595.00

Note: Non-standard lengths of Wirsbo hePEX plus tubing are also available. Call Uponor Customer Service for availability and pricing.

*2" Wirsbo hePEX plus available spring, 2008.

Part No.	Part Description	List Price/Ea.
NEW A1921250	1 1/4" Wirsbo hePEX plus, 20-ft. Straight Length, 100 ft.	\$428.00
NEW A1921500	1 1/2" Wirsbo hePEX plus, 20-ft. Straight Length, 100 ft.	\$585.00
NEW A1922000	2" Wirsbo hePEX plus, 20-ft. Straight Length, 100 ft. *	\$865.00

*2" Wirsbo hePEX plus available spring, 2008.

Wirsbo hePEX Tubing, Straight Lengths



Uponor Radiant Heating and Cooling Systems

Multi-layer Composite (MLC) Tubing



Multi-layered composite tubing consisting of an interior aluminum tubing lined with inner and outer layers of PEX. MLC tubing offers 100% oxygen diffusion. The stay-in-place rigid feature of the tubing works great for hydronic baseboard, radiators, unit heaters, air handlers or manifold connections.

Uponor MLC tubing is manufactured to the following standard.

- ASTM F1281 "Standard Specification for Cross-linked Polyethylene/Aluminum/Cross-linked Polyethylene (PEX-AL-PEX) Pressure Pipe"

Uponor Tubing is rated and listed by the Hydrostatic Stress Board of PPI at:

- 200°F at 100 psi • 180°F at 125 psi • 140°F at 160 psi • 73°F at 200 psi

Uponor MLC tubing has the following listing: ICC.

Uponor MLC tubing is approved in the following code: IMC.

Note: MLC tubing is used in hydronic heating installations only.

Part No.	Part Description	Coils/Pallet	List Price/Ea.
D1250500	½" MLC Tubing, 300-ft. coil	20	\$306.65
D1220500	½" MLC Tubing, 1,000-ft. coil	8	\$1,022.00
D1250625	⅝" MLC Tubing, 300-ft. coil	13	\$416.75
D1220625	⅝" MLC Tubing, 1,000-ft. coil	7	\$1,389.15
D1140750	¾" MLC Tubing, 100-ft. coil	14	\$196.80
D1250750	¾" MLC Tubing, 300-ft. coil	8	\$590.40
D1240750	¾" MLC Tubing, 500-ft. coil	6	\$984.00
D1141000	1" MLC Tubing, 100-ft. coil	10	\$284.20
D1251000	1" MLC Tubing, 300-ft. coil	6	\$813.80

Non-barrier Tubing

High-density Polyethylene (HDPE) Tubing



High-density polyethylene (HDPE) SDR 11 tubing used as supply and return mains for large hydronic heating applications where the system contains no ferrous corrodible components or where ferrous components are isolated from the tubing. HDPE tubing is manufactured from 3408 PE material. Tubing and fittings are connected through fusion welding.

Service pressure and temperature ratings for HDPE used to convey water or water/glycol mixtures are as follows:

- 140°F at 80 psi
- 120°F at 100 psi
- 100°F at 125 psi
- 73.4°F at 160 psi

Note: This tubing is provided only in 20-foot lengths.

Part No.	Part Description	List Price/Ea.
B1812000	2" x 20' HDPE Tubing (straight length)	\$105.55
B1813000	3" x 20' HDPE Tubing (straight length)	\$203.70
B1814000	4" x 20' HDPE Tubing (straight length)	\$310.30

Uponor Radiant Heating and Cooling Systems

TruFLOW™ Family of Manifold Systems

The TruFLOW™ family of manifolds offer an enhanced range of capacity, reliability and flexibility for radiant systems. The TruFLOW family consists of four manifold systems.

- TruFLOW Jr. Manifold Assembly
- TruFLOW Jr. Modular Manifold
- TruFLOW Classic Manifold Assembly
- TruFLOW Sr. Modular Manifold

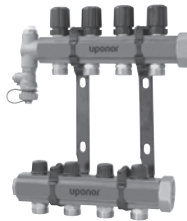
These extruded brass manifolds offer quick and easy connections to supply and return lines, and accommodate Wirsbo hePEX plus, Wirsbo AQUAPEX and MLC tubing for radiant loops. All come with a full line of accessories.

The maximum operating temperature and pressure for the TruFLOW family of manifolds is 220°F at 145 psi.

TruFLOW Jr. Manifolds



TruFLOW Jr. Assembly
with Balancing Valves
and Valveless

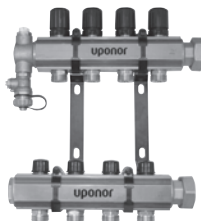


TruFLOW Jr. Assembly
with Isolation and
Balancing Valves



TruFLOW Jr.
Add-on
Modular Manifolds

TruFLOW Classic Manifold Assembly



TruFLOW Classic Manifold Assembly

TruFLOW Sr. Modular Manifolds



TruFLOW Sr. Manifold
with Balancing Valves



TruFLOW Sr. Manifold
with Isolation Valves

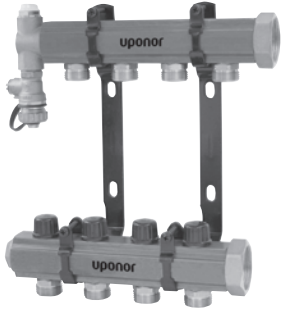


TruFLOW Sr.
Valveless Manifold

Uponor Radiant Heating and Cooling Systems

TruFLOW Manifold Assemblies

TruFLOW Assembly with Balancing Valves and Valveless

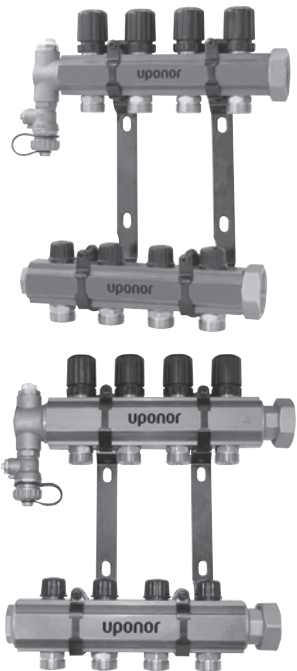


The TruFLOW Assembly with Balancing Valves and Valveless manifold comes fully assembled and ready for installation. The manifold body ends have R32 unions and the loop outlets have QS20 male threads.

Maximum recommended flow to the manifold based on manifold body diameter is 14 gpm.

Part No.	Item Description	Dim (Body-Outlets-Body)	Each Qty.	Pkg. Qty.	List Price/Ea.
A2660200	TruFLOW Jr. Assembly, Balancing Valves and Valveless, 2-loop	R32-R20-R32	1	-	\$226.55
A2660300	TruFLOW Jr. Assembly, Balancing Valves and Valveless, 3-loop	R32-R20-R32	1	-	\$275.70
A2660400	TruFLOW Jr. Assembly, Balancing Valves and Valveless, 4-loop	R32-R20-R32	1	-	\$326.40
A2660500	TruFLOW Jr. Assembly, Balancing Valves and Valveless, 5-loop	R32-R20-R32	1	-	\$421.10
A2660600	TruFLOW Jr. Assembly, Balancing Valves and Valveless, 6-loop	R32-R20-R32	1	-	\$470.25
A2660700	TruFLOW Jr. Assembly, Balancing Valves and Valveless, 7-loop	R32-R20-R32	1	-	\$521.00
A2660800	TruFLOW Jr. Assembly, Balancing Valves and Valveless, 8-loop	R32-R20-R32	1	-	\$571.70

TruFLOW Assembly with Balancing and Isolation Valves



The TruFLOW Assembly with Balancing and Isolation Valves comes fully assembled and ready for installation. The manifold assembly is shipped with the appropriate number of TruFLOW Manifold Actuator Adapters (A2630028). The manifold body ends have threads as shown below.

Maximum recommended flow to the manifold is 14 gpm for Jr. and 21 gpm for Classic.

Part No.	Item Description	Dim (Body-Outlets)	Each Qty.	Pkg. Qty.	List Price/Ea.
A2660201	TruFLOW Jr. Assembly, B&I, 2-loop	R32-R20	1	-	\$283.20
A2660301	TruFLOW Jr. Assembly, B&I, 3-loop	R32-R20	1	-	\$344.60
A2660401	TruFLOW Jr. Assembly, B&I, 4-loop	R32-R20	1	-	\$408.00
A2660501	TruFLOW Jr. Assembly, B&I, 5-loop	R32-R20	1	-	\$526.35
A2660601	TruFLOW Jr. Assembly, B&I, 6-loop	R32-R20	1	-	\$587.80
A2660701	TruFLOW Jr. Assembly, B&I, 7-loop	R32-R20	1	-	\$651.20
A2660801	TruFLOW Jr. Assembly, B&I, 8-loop	R32-R20	1	-	\$714.60
A2610200	TruFLOW Classic Assembly, B&I, 2-loop	R32-R20	1	-	\$317.70
A2610300	TruFLOW Classic Assembly, B&I, 3-loop	R32-R20	1	-	\$394.95
A2610400	TruFLOW Classic Assembly, B&I, 4-loop	R32-R20	1	-	\$472.20
A2610500	TruFLOW Classic Assembly, B&I, 5-loop	R32-R20	1	-	\$570.25
A2610600	TruFLOW Classic Assembly, B&I, 6-loop	R32-R20	1	-	\$647.60
A2610700	TruFLOW Classic Assembly, B&I, 7-loop	R32-R20	1	-	\$725.00
A2610800	TruFLOW Classic Assembly, B&I, 8-loop	R32-R20	1	-	\$831.90
A2611000	TruFLOW Classic Assembly, B&I, 10-loop	R32-R20	1	-	\$998.75
A2611200	TruFLOW Classic Assembly, B&I, 12-loop	R32-R20	1	-	\$1,174.60

Uponor Radiant Heating and Cooling Systems

TruFLOW Jr. and Sr. Modular Manifolds

TruFLOW Modular Manifold with Balancing Valves is used in conjunction with either the TruFLOW Modular Manifold with Isolation Valves or the TruFLOW Modular Valveless Manifold to complete the manifold set. The TruFLOW Modular Manifold with Balancing Valves allows manual flow balancing of the individual loops on the manifold. Manifolds are available in 2- to 6-loop configurations depending on model. The manifold body ends have threads as shown below.

Maximum recommended flow to the manifold is 14 gpm for Jr. and 41 gpm for Sr.

Part No.	Item Description	Dim (Body-Outlets-Body)	Each Qty.	Pkg. Qty.	List Price/Ea.
A2663212	TruFLOW Jr. Balancing Valves, 2-loop	R32-R20-R32	1	-	\$90.70
A2663213	TruFLOW Jr. Balancing Valves, 3-loop	R32-R20-R32	1	-	\$112.85
A2663214	TruFLOW Jr. Balancing Valves, 4-loop	R32-R20-R32	1	-	\$134.95
◀ A2650201	TruFLOW Sr. Balancing Valves, 2-loop	1½" BSP-R25-1½" BSP	1	-	\$136.35
◀ A2650301	TruFLOW Sr. Balancing Valves, 3-loop	1½" BSP-R25-1½" BSP	1	-	\$193.50
◀ A2650401	TruFLOW Sr. Balancing Valves, 4-loop	1½" BSP-R25-1½" BSP	1	-	\$250.75
◀ A2650501	TruFLOW Sr. Balancing Valves, 5-loop	1½" BSP-R25-1½" BSP	1	-	\$344.55
◀ A2650601	TruFLOW Sr. Balancing Valves, 6-loop	1½" BSP-R25-1½" BSP	1	-	\$401.20

TruFLOW Manifold with Balancing Valves



TruFLOW Modular Manifold with Isolation Valves is used in conjunction with either the TruFLOW Modular Manifold with Balancing Valves or the TruFLOW Modular Valveless Manifold to complete the manifold set. The TruFLOW Modular Manifold with Isolation Valves allows quick isolation of the loop by closing the valve on the manifold. Manifolds are available in 2- to 6-loop configurations depending on model. The manifold body ends have threads as shown below.

Maximum recommended flow to the manifold is 14 gpm for Jr. and 41 gpm for Sr.

Part No.	Item Description	Dim (Body-Outlets-Body)	Each Qty.	Pkg. Qty.	List Price/Ea.
A2663222	TruFLOW Jr. Isolation Valves, 2-loop	R32-R20-R32	1	-	\$108.65
A2663223	TruFLOW Jr. Isolation Valves, 3-loop	R32-R20-R32	1	-	\$143.00
A2663224	TruFLOW Jr. Isolation Valves, 4-loop	R32-R20-R32	1	-	\$177.35
◀ A2650202	TruFLOW Sr. Isolation Valves, 2-loop	1½" BSP-R25-1½" BSP	1	-	\$157.10
◀ A2650302	TruFLOW Sr. Isolation Valves, 3-loop	1½" BSP-R25-1½" BSP	1	-	\$224.75
◀ A2650402	TruFLOW Sr. Isolation Valves, 4-loop	1½" BSP-R25-1½" BSP	1	-	\$292.60
◀ A2650502	TruFLOW Sr. Isolation Valves, 5-loop	1½" BSP-R25-1½" BSP	1	-	\$378.55
◀ A2650602	TruFLOW Sr. Isolation Valves, 6-loop	1½" BSP-R25-1½" BSP	1	-	\$464.45

TruFLOW Manifold with Isolation Valves



◀ Discontinued item; available while quantities last. Please contact Uponor Customer Service for availability. All sales are final.

Uponor Radiant Heating and Cooling Systems

TruFLOW Valveless Manifold



TruFLOW Modular Valveless Manifold is used with either the TruFLOW Modular Manifold with Isolation Valves or the TruFLOW Modular Manifold with Balancing Valves to complete the manifold set. The TruFLOW Modular Valveless Manifold does not feature flow balancing or isolation capability. Manifolds are available in 2- to 6-loop configurations depending on model. The manifold body and the loop outlets have threads as shown below.

Maximum recommended flow to the manifold is 14 gpm for Jr. and 41 gpm for Sr.

Part No.	Item Description	Dim (Body-Outlets-Body)	Each Qty.	Pkg. Qty.	List Price/Ea.
A2663202	TruFLOW Jr. Valveless, 2-loop	R32-R20-R32	1	-	\$59.85
A2663203	TruFLOW Jr. Valveless, 3-loop	R32-R20-R32	1	-	\$74.65
A2663204	TruFLOW Jr. Valveless, 4-loop	R32-R20-R32	1	-	\$88.50
◀ A2650200	TruFLOW Sr. Valveless, 2-loop	1½" BSP-R25-1½" BSP	1	-	\$117.95
◀ A2650300	TruFLOW Sr. Valveless, 3-loop	1½" BSP-R25-1½" BSP	1	-	\$166.15
◀ A2650400	TruFLOW Sr. Valveless, 4-loop	1½" BSP-R25-1½" BSP	1	-	\$214.30
◀ A2650500	TruFLOW Sr. Valveless, 5-loop	1½" BSP-R25-1½" BSP	1	-	\$280.75
◀ A2650600	TruFLOW Sr. Valveless, 6-loop	1½" BSP-R25-1½" BSP	1	-	\$347.15

TruFLOW Manifold Accessories

TruFLOW Manifold Mounting Bracket



TruFLOW Jr. and TruFLOW Classic Manifold Mounting Bracket is used to mount the TruFLOW Jr. and TruFLOW Classic Manifolds. Brackets are made of durable metal and are offset front-to-back and side-to-side for ease of installation. Two brackets are required for each manifold location.

Part No.	Part Description	Each Qty.	Pkg. Qty.	List Price/Ea.
A2640006	TruFLOW Jr. Manifold Mounting Bracket, single bracket	-	10	\$21.50
A2620006	TruFLOW Classic Manifold Bracket, single bracket replacement part	-	10	\$30.60

TruFLOW Support Bracket



TruFLOW Support Bracket comes in a set of two and facilitates mounting of TruFLOW Jr. and TruFLOW Classic manifolds between wall studs. The brackets mount in four different configurations – with exposed studs, in a stud cavity, on a flat surface and vertically. The brackets are made of stamped metal construction and accommodates different stud widths. The brackets include wood screws for mounting to studs (or walls) as well as four sliding cage nuts and four machine screws for mounting the assemblies to the brackets.

TruFLOW Sr. Manifold Mounting Bracket Set is used to mount the TruFLOW Sr. Manifolds. Mounting hardware for the brackets sold separately. Four brackets are required for each manifold location.

Part No.	Part Description	Each Qty.	Pkg. Qty.	List Price/Ea.
A2072500	TruFLOW Support Bracket, set of 2	1	-	\$53.75
◀ A2650006	TruFLOW Sr. Manifold Mounting Bracket, set of 4	1	-	\$169.70

◀ Discontinued item; available while quantities last. Please contact Uponor Customer Service for availability. All sales are final.

Uponor Radiant Heating and Cooling Systems

End Cap with Vent caps the end of the TruFLOW Jr. Modular Manifolds. It comes complete with swivel drain valve and manual air vent. Required gasket (A2403232) is included.

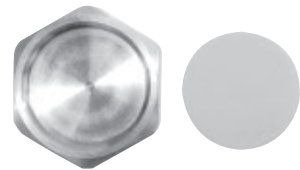
End Cap with Vent



Part No.	Part Description	Each Qty.	Pkg. Qty.	List Price/Ea.
A2803250	End Cap with Vent, R32	1	-	\$68.25
A2403232	Manifold Gasket, spare part	-	10	\$1.50

Basic End Cap caps the end of the TruFLOW Jr. Modular Manifolds. Required gaskets and o-rings are included.

Basic End Cap



Part No.	Part Description	Each Qty.	Pkg. Qty.	List Price/Ea.
A2080032	Basic End Cap, R32	-	10	\$16.10
A2651251	TruFLOW Sr. Manifold Basic End Cap	-	10	\$20.45

TruFLOW Sr. Manifold End Cap with Drain and Vent has 1¼" male BSP thread to connect into the TruFLOW Manifold Reducing Bushing supplied in the kit. The bushing has 1¼" female BSP threads with 1½" male BSP threads that connect into the TruFLOW Sr. Manifold body. This end cap comes standard with a manual purge vent on top and a garden hose threaded connection on the drain. The manual vent can be replaced with the Automatic Vent with Check Valve (A2620050), sold separately. Use Uponor Silicone Oil (A2620007), sold separately, on the male threads to ease installation.

TruFLOW Manifold End Cap with Drain and Vent Kit



Note: Use only with TruFLOW Sr. Manifolds.

Part No.	Part Description	Each Qty.	Pkg. Qty.	List Price/Ea.
A2651250	TruFLOW Sr. Manifold End Cap with Drain and Vent Kit	-	10	\$59.85

◀ Discontinued item; available while quantities last. Please contact Uponor Customer Service for availability. All sales are final.

Uponor Radiant Heating and Cooling Systems

TruFLOW Jr. and Classic Manifold Supply and Return Ball Valves



TruFLOW Manifold Supply and Return Ball Valves are full-flow 1¼" ball valves with R32 male by R32 union nut that fits directly on the TruFLOW Jr. and Classic Manifolds. The Ball Valves come standard with a thermometer for easy visual check of supply temperatures. The Supply Valve has built-in filter; the filter ball has isolation within the valve for easy cleaning of the filter.

Part No.	Part Description	Each Qty.	Pkg. Qty.	List Price/Ea.
A2631250	TruFLOW Manifold Supply and Return Ball Valves, one set	1	-	\$204.90
A2610120	Thermometer with Well, replacement part	-	10	\$21.45

TruFLOW Manifold Coupling Nipple



TruFLOW Manifold Coupling Nipple features male BSP thread on both ends and is used to make the connection between manifold parts. Primary seal for the connection is made with the attached o-ring on the nipple. Thread sealant on the nipple ensures tight bonding between the nipple and the manifold. Use Uponor Silicone Oil (A2620007), sold separately, on the male threads to ease installation.

Part No.	Part Description	Each Qty.	Pkg. Qty.	List Price/Ea.
A2621010	TruFLOW Classic Manifold Coupling Nipple, 1¼" BSP x 1¼" BSP	-	10	\$17.90
A2651515	TruFLOW Sr. Manifold Coupling Nipple, 1½" BSP x 1½" BSP	-	10	\$27.95

TruFLOW Manifold Elbow Union



Features an R32 union by 1¼" BSP male connection. The union elbow is designed to make tight 90-degree turns from the TruFLOW Classic Manifold supply and return connections. Use Uponor Silicone Oil (A2620007), sold separately, on the male threads to ease installation.

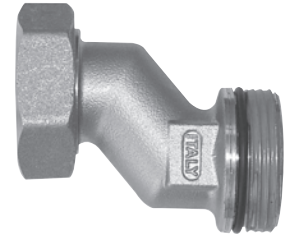
Part No.	Part Description	Each Qty.	Pkg. Qty.	List Price/Ea.
A2620090	TruFLOW Classic Manifold Elbow Union, R32 Union x 1¼" BSP	-	10	\$21.85

◀ Discontinued item; available while quantities last. Please contact Uponor Customer Service for availability. All sales are final.

Uponor Radiant Heating and Cooling Systems

Features an R32 union by 1¼" BSP male connection. This union is designed for easy alignment of the supply and return piping at the manifold. Use Uponor Silicone Oil (A2620007), sold separately, on the male threads to ease installation.

TruFLOW Manifold Offset Union



Part No.	Part Description	Each Qty.	Pkg. Qty.	List Price/Ea.
A2620045	TruFLOW Classic Manifold Offset union, R32 Union x 1¼" BSP	-	10	\$22.95

This TruFLOW Classic Manifold Extension Kit is designed for easy in-line extension of up to two additional loops for the TruFLOW Classic Manifold Assembly. The kit contains two 1¼" BSP nipples, one supply manifold, one return manifold and two loop end caps. Use Uponor Silicone Oil on the male threads to ease installation. A bottle of Uponor Silicone Oil is provided in the kit.

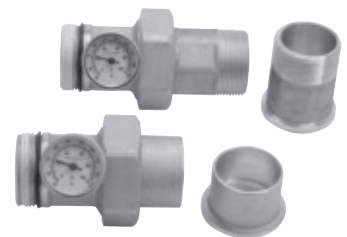
TruFLOW Manifold Extension Kit



Part No.	Part Description	Each Qty.	Pkg. Qty.	List Price/Ea.
A2610100	TruFLOW Classic Manifold Extension Kit, 2 loops	1	-	\$254.95

The TruFLOW Sr. Manifold Connection Kit makes quick transition from the manifold to either 1½" copper pipe or 1½" NPT-threaded connections. The kit comes with two thermometer adapters with thermometer, two TruFLOW Sr. 2" BSP union nuts, two 1½" NPT male-threaded adapters, and two 1½" copper adapters. The thermometer adapter threads into the body of the manifold with 2" BSP union nut capturing the respective threaded or sweat adapter to the thermometer adapter. Use Uponor Silicone Oil (A2620007), sold separately, on the male threads to ease installation.

TruFLOW Manifold Connection Kit



Part No.	Part Description	Each Qty.	Pkg. Qty.	List Price/Ea.
A2651500	TruFLOW Sr. Manifold Connection Kit	1	-	\$212.00

Part No.	Part Description	Each Qty.	Pkg. Qty.	List Price/Ea.
A2400032	Basic End Cap Gasket, spare part, R32	-	10	\$2.15
A2650001	Replacement Gasket for 1½" TruFLOW Sr. Union	-	10	\$0.70
A2650004	Replacement O-ring for 1½" BSP Connections	-	10	\$0.30
A2620005	Replacement Gasket for R32 Union Connections	-	10	\$1.05
A2620007	Silicone Oil, 1.76 oz. bottle, optional part	-	10	\$8.25
A2620008	Replacement O-ring for 1¼" BSP Connections	-	10	\$0.45

Replacement and Spare Parts for Manifolds

◀ Discontinued item; available while quantities last. Please contact Uponor Customer Service for availability. All sales are final.

Uponor Radiant Heating and Cooling Systems

TruFLOW Manifold Actuator Adapter



The TruFLOW Manifold Actuator Adapter is a replacement part. This M28 brass adapter converts the manifold actuator threads to fit the standard Uponor Thermal Actuator (A3010522) and Motorized Actuator (A3020522).

Note: Use only with the TruFLOW Jr. and Classic Manifolds.

Part No.	Part Description	Each Qty.	Pkg. Qty.	List Price/Ea.
A2630028	TruFLOW Manifold Actuator Adapter, replacement part	-	10	\$1.95

TruFLOW Manifold Balancing Hex Key



The TruFLOW Manifold Balancing Hex Key is used on the supply manifold to adjust the flow rate across the loop for balancing. Each manifold is shipped with a hex key for balancing.

Part No.	Part Description	Each Qty.	Pkg. Qty.	List Price/Ea.
A2620002	TruFLOW Manifold Balancing Hex Key, replacement part	-	10	\$4.25

TruFLOW Visual Flow Meter



Use the TruFLOW Visual Flow Meter on TruFLOW Jr. and TruFLOW Classic manifolds to accurately measure the flow of hydronic radiant loops. The meter is available in a low-range (A2640015), which measures 0.15 to 0.8 gpm, and a high-range (A2640027), which measures 0.25 to 2.0 gpm. Both meters feature Q20 male threads to connect with Q20 threaded fitting assemblies.

Note 1: For proper operation, install Flow Meters on the return manifold.

Note 2: Uponor recommends using a strainer within the system such as the TruFLOW Manifold Supply and Return Ball Valves (A2631250) to keep debris from entering the flow meters.

Part No.	Part Description	Each Qty.	Pkg. Qty.	List Price/Ea.
A2640015	TruFLOW Visual Flow Meter, 0.15 to 0.8 gpm	-	10	\$33.45
A2640027	TruFLOW Visual Flow Meter, 0.25 to 2.0 gpm	-	10	\$33.45

Uponor Radiant Heating and Cooling Systems

TruFLOW Loop Thermometer comes with an QS20 female union on one end and an QS20 male on the other. Thermometer Well and removable thermometer are included.

Note: Use only with the TruFLOW Jr. and Classic Manifolds.

TruFLOW Loop Thermometer



Part No.	Part Description	Each Qty.	Pkg. Qty.	List Price/Ea.
A2610020	TruFLOW Manifold Loop Thermometer	-	10	\$36.95
A2610120	Thermometer with Well, replacement part	-	10	\$21.45

Use the TruFLOW Electronic Flow/Temperature Meter on TruFLOW Jr. and TruFLOW Classic manifolds to accurately measure flow and temperature in hydronic radiant loops. The meter is available in a low range (A2620015), which measures 0.15 to 1.3 gpm, and a high-range (A2620027), which measures 0.37 to 2.0 gpm. Both meters feature Q20 male thread to connect with Q20 threaded fitting assemblies.

Note 1: For proper operation, install Flow/Temperature Meters on the return manifold. The FlowMaster (A2620001) is required to accurately measure the flow in the hydronic loops.

Note 2: Uponor recommends using a strainer within the system such as the TruFLOW Manifold Supply and Return Ball Valves (A2631250) to keep debris from entering the flow meters.

TruFLOW Electronic Flow/Temperature Meter



Part No.	Part Description	Each Qty.	Pkg. Qty.	List Price/Ea.
A2620015	TruFLOW Electronic Flow/Temperature Meter, 0.15 to 1.3 gpm	-	10	\$39.10
A2620027	TruFLOW Electronic Flow/Temperature Meter, 0.37 to 2.0 gpm	-	10	\$39.10
A2620009	Replacement O-ring for TruFLOW Flow/Temperature Meter	-	10	\$0.40

The FlowMaster uses electronic technology to measure flow and temperature in hydronic heating systems. The FlowMaster has the ability to read flow and temperatures for individual loops. The device can store the flow and temperature information for up to 144 loops. Documentation is simplified with the download capability of the FlowMaster. The FlowMaster comes with software, a communication cable and a battery charger. Software is PC-compatible only.

FlowMaster



Part No.	Part Description	Each Qty.	Pkg. Qty.	List Price/Ea.
A2620001	FlowMaster	1	-	\$1,196.65

Similar to the original FlowMaster (A2620001), the FlowMaster Jr. is geared toward installers who do not need to save or download data to a computer. A digital screen on the FlowMaster Jr. provides high/low flow and temperature read-outs per loop. The FlowMaster Jr. does not feature memory or storage capability.

Note: Two batteries are included with the FlowMaster Jr.

FlowMaster Jr.



Part No.	Part Description	Each Qty.	Pkg. Qty.	List Price/Ea.
A2630001	FlowMaster Jr.	1	-	\$178.60

◀ Discontinued item; available while quantities last. Please contact Uponor Customer Service for availability. All sales are final.

Uponor Radiant Heating and Cooling Systems

Copper Manifolds

2" Copper Valved Manifold with ProPEX Ball Valves



Uponor's 2" x 4' Copper Valved Manifold with ProPEX Ball Valves is made of type L copper and features 5/8" and 3/4" nominal branches that are 4 inches on center. The manifold is available in 12-outlet configurations. The maximum recommended flow to the manifold based on manifold body diameter is 45 gpm.

Part No.	Part Description	Each Qty.	Pkg. Qty.	List Price/Ea.
Q2811263	2" x 4' Copper Valved Manifold with 5/8" ProPEX Ball Valves, 12 outlet	1	-	\$683.05
Q2811275	2" x 4' Copper Valved Manifold with 3/4" ProPEX Ball Valves, 12 outlet	1	-	\$723.80

2" Copper Valved Manifold with ProPEX Ball and Balancing Valves



Uponor's 2" x 4' Copper Valved Manifold with ProPEX Ball and Balancing Valves is made of type L copper and features 5/8" and 3/4" nominal branches that are 4 inches on center. The manifold is available in 12-outlet configurations. The maximum recommended flow to the manifold based on manifold body diameter is 45 gpm.

Part No.	Part Description	Each Qty.	Pkg. Qty.	List Price/Ea.
Q2821263	2" x 4' Copper Valved Manifold with 5/8" ProPEX Ball and Balancing Valves, 12 outlet	1	-	\$1,097.00
Q2821275	2" x 4' Copper Valved Manifold with 3/4" ProPEX Ball and Balancing Valves, 12 outlet	1	-	\$1,029.15

2" Copper Valved Manifold with R20/R25 Threaded Ball Valves

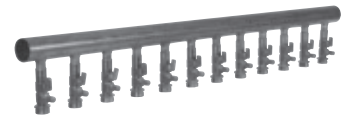


Part No.	Part Description	Each Qty.	Pkg. Qty.	List Price/Ea.
F2811220	2" x 4' Copper Valved Manifold with R20 Threaded Ball Valves, 12 outlet	1	-	\$815.45
F2811225	2" x 4' Copper Valved Manifold with R25 Threaded Ball Valves, 12 outlet	1	-	\$871.70

Uponor Radiant Heating and Cooling Systems

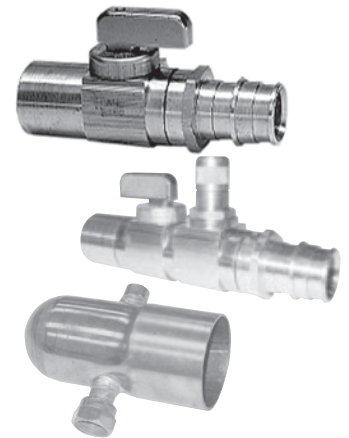
Part No.	Part Description	Each Qty.	Pkg. Qty.	List Price/Ea.
F2821220	2" x 4' Copper Valved Manifold with R20 Threaded Ball and Balancing Valves, 12 outlet	1	-	\$965.30
F2821225	2" x 4' Copper Valved Manifold with R25 Threaded Ball and Balancing Valves, 12 outlet	1	-	\$1,018.35

2" Copper Valved Manifold with R20/R25 Threaded Ball and Balancing Valves



Part No.	Part Description	Each Qty.	Pkg. Qty.	List Price/Ea.
Q5806375	ProPEX Ball Valve, 5/8" PEX x 3/4" Copper Adapter	-	10	\$27.10
Q5807575	ProPEX Ball Valve, 3/4" PEX x 3/4" Copper Adapter	-	10	\$28.65
Q5906375	ProPEX Ball and Balancing Valve, 5/8" PEX x 3/4" Copper Adapter	-	10	\$53.30
Q5907575	ProPEX Ball and Balancing Valve, 3/4" PEX x 3/4" Copper Adapter	-	10	\$52.75
A5802075	Ball Valve, R20 Thread x 3/4" Copper Adapter	-	10	\$28.05
A5802575	Ball Valve, R25 Thread x 3/4" Copper Adapter	-	10	\$30.55
A5902075	Ball and Balancing Valve, R20 Thread x 3/4" Copper Adapter	-	10	\$56.90
A5902575	Ball and Balancing Valve, R25 Thread x 3/4" Copper Adapter	-	10	\$58.70
A2402000	2" Copper End Cap Spun End with drain and vent connections	1	-	\$112.00

2" Copper Valved Manifold Accessories



Copper Valveless Manifold (type L copper) with 1/2" nominal. The manifolds can be joined together to create the desired number of outlets. Branches are brazed to manifold trunk. Use 1/2-inch copper pipe adapters for Uponor QS-style or ProPEX fittings to make connections to 3/8", 1/2" and 5/8" Uponor PEX. Requires a 1-inch copper end cap and applicable transition fitting. The maximum recommended flow rates for these manifolds are: 2-inch, 45 gpm; 1 1/2-inch, 21 gpm; 1-inch, 9 gpm.

Part No.	Part Description	Each Qty.	Pkg. Qty.	List Price/Ea.
F2802075	2" x 6' Copper Valveless Manifold with 24 outlets, 3/4" sweat	-	2	\$581.90
F2801575	1 1/2" x 6' Copper Valveless Manifold with 24 outlets, 3/4" sweat	-	3	\$402.75
F2781050	1" Copper Valveless Manifold with 3 outlets, 1/2" sweat, 2" on center	1	-	\$33.85
F2791050	1" Copper Valveless Manifold with 4 outlets, 1/2" sweat, 2" on center	1	-	\$38.50

Copper Valveless Manifold



◀ Discontinued item; available while quantities last. Please contact Uponor Customer Service for availability. All sales are final.

Uponor Radiant Heating and Cooling Systems

HDPE Manifolds and Accessories

HDPE Valveless Manifold



Multiple-outlet HDPE Valveless Manifolds are manufactured with 3/4" or 1" 303 stainless steel ProPEX fittings hydraulically pressed onto the outlet nipples. ProPEX connection and manifold are maintenance-free and suitable for direct burial. They're ideal for applications larger than 5,000 square feet or where flow requirements are greater than the capacity of other Uponor manifolds. The HDPE Valveless Manifolds come with standard 12-inch on-center outlet spacing. The maximum recommended flow rates for these manifolds are: 2-inch, 41 gpm; 3-inch, 116 gpm; 4-inch, 226 gpm.

Note: ProPEX Tool is required. Only use in systems free of corrodible components or when there is corrosion control. The temperature limitation is 140°F at 80 psi.

Part No.	Part Description	Each Qty.	Pkg. Qty.	List Price/Ea.
B2252751	2" x 10' HDPE Valveless Manifold (12" o.c.), 10 outlet, 3/4" ProPEX	1	-	\$2,011.40
B2272101	2" x 10' HDPE Valveless Manifold (12" o.c.), 10 outlet, 1" ProPEX	1	-	\$2,011.40
B2252752	2" x 20' HDPE Valveless Manifold (12" o.c.), 20 outlet, 3/4" ProPEX	1	-	\$4,022.70
B2272102	2" x 20' HDPE Valveless Manifold (12" o.c.), 20 outlet, 1" ProPEX	1	-	\$4,022.70
B2253751	3" x 10' HDPE Valveless Manifold (12" o.c.), 10 outlet, 3/4" ProPEX	1	-	\$2,082.40
B2273101	3" x 10' HDPE Valveless Manifold (12" o.c.), 10 outlet, 1" ProPEX	1	-	\$2,082.40
B2253752	3" x 20' HDPE Valveless Manifold (12" o.c.), 20 outlet, 3/4" ProPEX	1	-	\$4,164.60
B2273102	3" x 20' HDPE Valveless Manifold (12" o.c.), 20 outlet, 1" ProPEX	1	-	\$4,164.60
B2254751	4" x 10' HDPE Valveless Manifold (12" o.c.), 10 outlet, 3/4" ProPEX	1	-	\$2,153.35
B2274101	4" x 10' HDPE Valveless Manifold (12" o.c.), 10 outlet, 1" ProPEX	1	-	\$2,153.35
B2254752	4" x 20' HDPE Valveless Manifold (12" o.c.), 20 outlet, 3/4" ProPEX	1	-	\$4,306.60
B2274102	4" x 20' HDPE Valveless Manifold (12" o.c.), 20 outlet, 1" ProPEX	1	-	\$4,306.60

HDPE Elbow



HDPE 90-degree Elbow makes 2-, 3- and 4-inch 90-degree HDPE-to-HDPE connections. HDPE 45-degree Elbow makes 4-inch, 45-degree HDPE-to-HDPE connections.

Note: Fusion weld the connections.

Part No.	Part Description	Each Qty.	Pkg. Qty.	List Price/Ea.
B2162000	HDPE 90-degree Elbow, 2" HDPE x 2" HDPE	1	-	\$41.40
B2163000	HDPE 90-degree Elbow, 3" HDPE x 3" HDPE	1	-	\$85.30
B2164000	HDPE 90-degree Elbow, 4" HDPE x 4" HDPE	1	-	\$125.80
B2192500	HDPE 45-degree Elbow, 2" HDPE x 2" HDPE	1	-	\$42.30
B2193500	HDPE 45-degree Elbow, 3" HDPE x 3" HDPE	1	-	\$84.30
B2194500	HDPE 45-degree Elbow, 4" HDPE x 4" HDPE	1	-	\$124.70

Uponor Radiant Heating and Cooling Systems

HDPE Tee makes 2-, 3- and 4-inch, 90-degree HDPE-to-HDPE-to-HDPE connections.

Note: Fusion weld the connections.

Part No.	Part Description	Each Qty.	Pkg. Qty.	List Price/Ea.
B2172000	HDPE Tee, 2" HDPE x 2" HDPE x 2" HDPE	1	-	\$54.90
B2173000	HDPE Tee, 3" HDPE x 3" HDPE x 3" HDPE	1	-	\$92.95
B2174000	HDPE Tee, 4" HDPE x 4" HDPE x 4" HDPE	1	-	\$136.55

HDPE Tee



HDPE Flange Adapter converts 2-, 3- and 4-inch HDPE tubing to non-ferrous metal pipe.

Note: Fusion weld the connections.

Part No.	Part Description	Each Qty.	Pkg. Qty.	List Price/Ea.
B2182000	2" HDPE Flange Adapter	1	-	\$79.70
B2183000	3" HDPE Flange Adapter	1	-	\$104.25
B2184000	4" HDPE Flange Adapter	1	-	\$117.00

HDPE Flange Adapter



HDPE Flange Backup Ring (steel) is used with HDPE Flange Adapter (B2182000, B2183000 and B2184000).

Note: Bolts are not included.

Part No.	Part Description	Each Qty.	Pkg. Qty.	List Price/Ea.
B2192000	2" HDPE Flange Backup Ring	1	-	\$66.15
B2193000	3" HDPE Flange Backup Ring	1	-	\$64.50
B2194000	4" HDPE Flange Backup Ring	1	-	\$72.15

HDPE Flange Backup Ring



Uponor Radiant Heating and Cooling Systems

HDPE End Cap



HDPE End Cap is available in 2-, 3- and 4-inch sizes.

Note: Fusion weld the connections.

Part No.	Part Description	Each Qty.	Pkg. Qty.	List Price/Ea.
B2202000	HDPE End Cap, 2" HDPE	1	-	\$22.00
B2203000	HDPE End Cap, 3" HDPE	1	-	\$47.80
B2204000	HDPE End Cap, 4" HDPE	1	-	\$73.85

HDPE Reducing Coupling



HDPE Reducing Coupling allows coupling between different size HDPE tubing.

Note: Fusion weld the connections.

Part No.	Part Description	Each Qty.	Pkg. Qty.	List Price/Ea.
B2223020	HDPE Reducing Coupling, 3" HDPE x 2" HDPE	1	-	\$51.25
B2224020	HDPE Reducing Coupling, 4" HDPE x 2" HDPE	1	-	\$77.65
B2224030	HDPE Reducing Coupling, 4" HDPE x 3" HDPE	1	-	\$78.35

Uponor Radiant Heating and Cooling Systems

Manifold Wall Cabinets

The Manifold Wall Cabinet is adjustable to accommodate a brass manifold mounted in either a 2x4 or 2x6 stud wall. This is a recess-style cabinet and comes with a removable door-trim package. You can mount an Uponor Zone Control Module inside the cabinet for ease of wiring and away from exposure or possible damage.

Note: Wall Cabinets are suitable for all brass manifolds except TruFLOW Sr.

Part No.	Item Description	Each Qty.	List Price/Ea.
A2603524	Manifold Wall Cabinet, 35.5" H x 24" W x 3.5" D	1	\$360.80
A2603530	Manifold Wall Cabinet, 35.5" H x 30.5" W x 3.5" D	1	\$404.40
A2603539	Manifold Wall Cabinet, 35.5" H x 39" W x 3.5" D	1	\$439.70

TruFLOW Jr. with Adapter Only ¹	A2603524	A2603530	A2603539
2 to 7 Loops	X		
8 to 10 Loops		X	
11 to 12 Loops			X
TruFLOW Jr. with Ball Valves ²	A2603524	A2603530	A2603539
2 to 5 Loops	X		
6 to 8 Loops		X	
10 to 12 Loops			X
TruFLOW Classic with Adapter Only ¹	A2603524	A2603530	A2603539
2 to 7 Loops	X		
8 and 10 Loops		X	
12 Loops			X
TruFLOW Classic with Ball Valves ²	A2603524	A2603530	A2603539
2 to 5 Loops	X		
6 to 8 Loops		X	
10 and 12 Loops			X

¹ Two inches added for manifold adapters plus one inch of clearance on each side of the manifold.

² Two inches added for manifold adapters plus one inch of clearance on each side of the manifold. Six inches added for the TruFLOW manifold ball valves mounted horizontally.



Uponor Radiant Heating and Cooling Systems

Mixing Controls

Climate Cöntrol™ – Multifunction



The Multifunction Climate Cöntrol™ hydronic controller is designed to simplify installations. This control incorporates all mechanical functions required in radiant floor heating, boiler staging and control, domestic hot water (DHW), snow melt, zone pumping and supply water temperature mixing. Input connections use a simple push-style connector and outputs use Cat5 cables and connector to control the output devices. Use the simple five-button display to set up and activate the functionality required for the individual installation. A data stick is included for the setup configuration to be saved.

Part No.	Part Description	Each Qty.	Pkg. Qty.	List Price/Ea.
NEW A8020000	Climate Cöntrol – Multifunction Hydronic Control	1	-	\$1,360.00

Boiler Relay



The Multifunction Climate Cöntrol unit controls and stages up to four boilers. Use the Boiler Relay to mount on or near the boiler. Connect to the Multifunction Climate Cöntrol unit using a standard Cat5 cable with RJ45 ends.

Part No.	Part Description	Each Qty.	Pkg. Qty.	List Price/Ea.
NEW A9012010	Boiler Relay, On-Off	1	-	\$80.00

Three-way Modulating Valve with Control



The Multifunction Climate Cöntrol unit provides mixing control of any Three-way Modulating Valves (0-10VDC) up to three different water temperatures in either radiant heating or snow-melting applications. Mount the Modulating Valve Control on or near the valve. Connect to the Multifunction Climate Cöntrol unit using a standard Cat5 cable with RJ45 ends. Uponor offers three-way valves with the valve control pre-wired and mounted to the motor.

Part No.	Part Description	Each Qty.	Pkg. Qty.	List Price/Ea.
NEW A9013021	¾" Three-way Modulating Valve with control (Cv = 4.7)	1	-	\$615.00
NEW A9013022	1" Three-way Modulating Valve with control (Cv = 10.0)	1	-	\$665.00
NEW A9013023	1¼" Three-way Modulating Valve with control (Cv = 19.0)	1	-	\$780.00
NEW A9013024	1½" Three-way Modulating Valve with control (Cv = 29.0)	1	-	\$1,025.00
NEW A9063020	Modulating Valve Control, 0-10V	1	-	\$75.00

Uponor Radiant Heating and Cooling Systems

The Multifunction Climate Cöntrol™ unit controls any pump or circulator up to 3A for primary, domestic, snow melt, secondary or zone pump operation. Mount the Pump Relay on or near the pump. Connect to the Multifunction Climate Cöntrol unit using a standard Cat5 cable with RJ45 ends.

Pump Relay



Part No.	Part Description	Each Qty.	Pkg. Qty.	List Price/Ea.
NEW A9013030	Pump Relay	1	-	\$118.00

The Multifunction Climate Cöntrol unit supports snow melt operation for up to two zones through the use of the Uponor Snow-melt Sensor, which wires to the main control panel using a Cat5 cable and RJ45 ends for simple and easy connections.

Note: Use the Automatic Snow and Ice Sensor for full automatic operation. The Snow-melt Sensor connects to the Multifunction Climate Cöntrol unit using a standard Cat5 cable with RJ45 ends.

Snow-melt Sensor



Part No.	Part Description	Each Qty.	Pkg. Qty.	List Price/Ea.
NEW A9013051	Snow-melt Sensor (includes 10k sensor and well)	1	-	\$325.00
NEW A9013052	Automatic Snow and Ice Sensor (includes cup and sensor)	1	-	\$2,035.00



The Multifunction Climate Cöntrol unit provides a variety of sensors to provide temperature information. The Dual Sensor reads tubing temperatures for secondary (mixed) or primary loops. The Outdoor Sensor connects to the Multifunction Climate Cöntrol with 18-2 AWG thermostat wire to a dedicated terminal. The Domestic Hot Water (DHW) Sensor and Dual Sensor connect using standard Cat5 cables with RJ45 ends to the appropriate device or control.

Sensors



Part No.	Part Description	Each Qty.	Pkg. Qty.	List Price/Ea.
NEW A9012002	Domestic Hot Water (DHW) Sensor, 10k	1	-	\$55.00
NEW A9013001	Dual Sensor, Supply and Return, 10k	1	-	\$77.00
NEW A9011001	Outdoor Sensor, 10k (replacement part)	1	-	\$70.00

Uponor Radiant Heating and Cooling Systems

Replacement Parts and Accessories

The following tools, cables and accessories are available to complete and simplify the Multifunction Climate Control™ installation.

	Part No.	Part Description	Each Qty.	Pkg. Qty.	List Price/Ea.
NEW	A8010002	Data Stick (replacement part)	1	-	\$40.00
NEW	A8010004	Replacement Display	1	-	\$110.00
NEW	A8110001	Replacement Control Board	1	-	\$950.00
NEW	A9030001	Cat5 Patch Cable (1-ft.)	1	-	\$9.65
NEW	A9030003	Cat5 Patch Cable (3-ft.)	1	-	\$13.90
NEW	A9030007	Cat5 Patch Cable (7-ft.)	1	-	\$20.30
NEW	A9030015	Cat5 Patch Cable (15-ft.)	1	-	\$36.45
NEW	A9030100	Cable Tester	1	-	\$331.20
NEW	A9030200	Cat5 Cable Stripper	1	-	\$96.30
NEW	A9030300	Modular Plug Crimping Tool	1	-	\$184.85
NEW	A9030111	RJ45 Connectors, 50 pack	-	50	\$106.55
NEW	A9031000	Cat5 Wire, 1,000-ft. roll	1	-	\$333.75

pro Series Controls and Accessories

The pro Series controls and accessory products are available while quantities last. The Climate Control - Multifunction and associated products beginning on page 30 are replacing pro Series controls.



	Part No.	Part Description	Each Qty.	Pkg. Qty.	List Price/Ea.
◀	A3040101	pro Series 101	1	-	\$819.00
◀	A3040201	pro Series 201	1	-	\$819.00
◀	A3040212	pro Series 212	1	-	\$1,486.80
◀	A3040311	pro Series 311	1	-	\$1,612.10
◀	A3040411	pro Series 411	1	-	\$3,850.35
◀	A3040612	pro Series 612	1	-	\$1,178.45
◀	A3040701	pro Series 701	1	-	\$1,886.35
◀	A3060070	Outdoor Sensor, replacement part	-	10	\$76.95
◀	A3060071	Universal Sensor, replacement part	-	10	\$70.80
◀	A3040039	Snow Melt Enable Kit, optional part	1	-	\$410.55
◀	A3040090	Snow and Ice Detector, replacement part	1	-	\$1,231.25
◀	A3040091	Snow and Ice Detector Socket, replacement part	1	-	\$270.00
◀	A3060072	Epoxy-coated Slab Sensor, replacement part	1	-	\$172.55
◀	A3130750	¾" Three-way Floating Action Mixing Valve (Cv 4.7)	1	-	\$426.05
◀	A3131000	1" Three-way Floating Action Mixing Valve (Cv 10)	1	-	\$575.10
◀	A3131250	1¼" Three-way Floating Action Mixing Valve (Cv 19)	1	-	\$646.40
◀	A3131500	1½" Three-way Floating Action Mixing Valve (Cv 29)	1	-	\$857.55

◀ Discontinued item; available while quantities last. Please contact Uponor Customer Service for availability. All sales are final.

Uponor Radiant Heating and Cooling Systems

The 1" Three-way Tempering Valve thermostatically controls water temperature ranges between 80 and 160°F. Non-corrosive reactive valve, 1-inch nominal sweat union connections. Cv 4.0

Three-way Tempering Valve



Part No.	Part Description	Each Qty.	Pkg. Qty.	List Price/Ea.
A5401112	1" Three-way Tempering Valve	1	-	\$273.60
A5401110	1" Three-way Tempering Valve Replacement Gaskets, set of three	1	-	\$7.95

The self-acting, automatic Differential Pressure By-pass Valve maintains flow rates (e.g., through a low-water content gas boiler), or controls the differential pressure in a hydronic heating system. Valves come with NPT unions.

Differential Pressure By-pass Valve



Part No.	Part Description	Each Qty.	Pkg. Qty.	List Price/Ea.
A5410750	3/4" Differential Pressure By-pass Valve	1	-	\$263.00
A5411000	1" Differential Pressure By-pass Valve	1	-	\$286.00

Uponor Radiant Heating and Cooling Systems

Zoning Controls

Room Thermostats



The Heat-only Thermostat (A3030101) and the Heat and Cool Thermostat (A3030102) are designed to operate in heating mode over two wires. These types of thermostats obtain their power for operation from taking voltage from the connected wiring. Different from other industry power-sharing thermostats, these eliminate any need for a third wire or battery, which makes the thermostats simple to install, wire and service. For those times when the two-wire thermostats aren't appropriate because of incompatibility with some third-party devices, Uponor also offers the Heat-only, Three-wire Thermostat (A3030103).

Part No.	Part Description	Each Qty.	Pkg. Qty.	List Price/Ea.
A3030101	Heat-only Thermostat, two-wire	1	-	\$86.95
A3030103	Heat-only Thermostat, three-wire	1	-	\$90.50
A3030102	Heat and Cool Thermostat	1	-	\$107.30

SetPoint 501 Controller



The SetPoint 501 is a single-stage, non-programmable setpoint controller designed to sense air temperature only. Control is not back-lit.

Part No.	Part Description	Each Qty.	Pkg. Qty.	List Price/Ea.
A3040501	SetPoint 501, Single-stage SetPoint Controller	1	-	\$155.45
A3040007	Cover plate for 500 series controllers	-	10	\$24.40

SetPoint 501s Controller



The SetPoint 501s is a single-stage, non-programmable setpoint controller designed to sense air, floor or both temperatures with the ability to select one or the other as the primary sensing point (floor sensor included).

Part No.	Part Description	Each Qty.	Pkg. Qty.	List Price/Ea.
A3041501	SetPoint 501s, Single-stage SetPoint Controller with floor sensor	1	-	\$248.55
A3040079	Floor Sensor, replacement part	1	-	\$77.85
A3040007	Cover plate for 500 series controllers	-	10	\$24.40

Uponor Radiant Heating and Cooling Systems

The SetPoint 511s is a single-stage, seven-day/24-hour programmable setpoint controller designed to sense air and/or floor temperature with the ability to select one or the other as the primary sensing point (floor sensor included).

Programmable SetPoint 511s Controller



Part No.	Part Description	Each Qty.	Pkg. Qty.	List Price/Ea.
A3041511	SetPoint 511s, Single-stage Programmable Controller with floor sensor	1	-	\$311.00
A3040079	Floor Sensor, replacement part	1	-	\$77.85
A3040007	Cover plate for 500 series controllers	-	10	\$24.40

The SetPoint 512 is a two-stage, heat/heat or heat/cool, seven-day/24-hour programmable setpoint controller designed to sense air and/or floor temperature with the ability to select one or the other as the primary sensing point (floor sensor not included).

Programmable SetPoint 512 Controller



Part No.	Part Description	Each Qty.	Pkg. Qty.	List Price/Ea.
A3040512	SetPoint 512, Two-stage Programmable Controller	1	-	\$297.20
A3040079	Floor Sensor, replacement part	1	-	\$77.85
A3040007	Cover plate for 500 series controllers	-	10	\$24.40

Features include flexible setpoint range (-40°F to 239°F), adjustable differential and time delay ranges and an LCD display. The control can be wired up to 500 feet using 18 AWG wire. Use the Universal Sensor (A3060071), included with the setpoint control, for strap-on or immersion well. For direct burial, use the optional sensor (A3060072) for slab sensing.

SetPoint 150 Controller



Part No.	Part Description	Each Qty.	Pkg. Qty.	List Price/Ea.
A3040150	SetPoint 150 Controller	1	-	\$360.00
A3060071	Universal Sensor, replacement part	-	10	\$70.80
A3060072	Epoxy-coated Slab Sensor, replacement part	1	-	\$172.55

◀ Discontinued item; available while quantities last. Please contact Uponor Customer Service for availability. All sales are final.

Uponor Radiant Heating and Cooling Systems

Zone Control Module



The Zone Control Module is designed for use with Uponor Thermostats, Motorized Valve Actuators (MVAs), Thermal Actuators or Zone Valves. The Zone Control Module provides connection between the thermostats and their respective actuators or zone valves; and the connection between the end switches and the pump or boiler relay. The modules are internally fused for protection from over current or direct shorts from the power supply transformer. The end switch circuit is also protected from over current, and a 2 amp fuse is factory installed.

Part No.	Part Description	Each Qty.	Pkg. Qty.	List Price/Ea.
A3030003	Three-zone Control Module	1	-	\$96.75
A3030004	Four-zone Control Module	1	-	\$117.60
A3030009	Replacement Fuse (2 amps), 4/pkg.	1	-	\$13.40
A3030010	Replacement Fuse (4 amps), 4/pkg.	1	-	\$13.40

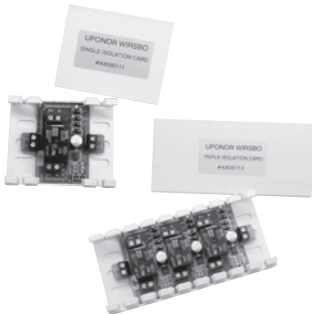
Powered Zone Controller



The Powered Four- and Six-zone Controllers include transformers for low-voltage operations and relays to operate line-voltage controls. Fully fuse-protected, they also include an isolated end switch and built-in DHW priority switch. The indicator lights show full functionality of the products wired to the Powered Zone Controllers. A 3-amp delay fuse protects the Powered Four-zone Controller. A 7-amp delay fuse protects the Powered Six-zone Controller.

Part No.	Part Description	Each Qty.	Pkg. Qty.	List Price/Ea.
A3080404	Powered Four-zone Controller	1	-	\$206.60
A3080406	Powered Six-zone Controller	1	-	\$263.00

Isolation Card



The low-voltage (24VAC) Isolation Card provides separation or isolation between power-sharing thermostats and the loads they control. The cards also isolate power variations caused by third-party components.

Part No.	Part Description	Each Qty.	Pkg. Qty.	List Price/Ea.
A3030111	Single Isolation Card (24VAC)	1	-	\$54.55
A3030113	Triple Isolation Card (24VAC)	1	-	\$119.70

Uponor Radiant Heating and Cooling Systems

Slow-opening thermal actuator (24VAC) mounts directly onto TruFLOW Valved Manifolds. It provides individual loop flow control on a multi-zoned manifold (manifold serving more than one zone). Thermal Actuator includes end switch for activation of relay (pump), heat plant or other auxiliary devices.

Thermal Actuator



Part No.	Part Description	Each Qty.	Pkg. Qty.	List Price/Ea.
A3010522	Thermal Actuator, four-wire	1	100	\$81.50

The Motorized Valve Actuator (MVA) (24VAC) features quick-opening motorized valve head that mounts directly onto TruFLOW Valved Manifolds. The open/close indicator allows for easy visual inspection. It provides individual flow control on a multi-zoned manifold (manifold serving more than one zone). MVA includes end switch for activation of relay (pump), heat plant or other auxiliary devices. Do not mount actuators upside down.

Motorized Valve Actuator (MVA)



Part No.	Part Description	Each Qty.	Pkg. Qty.	List Price/Ea.
A3020522	Motorized Valve Actuator (MVA), four-wire	1	50	\$110.65

Four-wire Zone Valve (24 VAC) features 3/4- and 1-inch sweat connections. It provides flow control for a single-zoned manifold (manifold serving one zone), and has a built-in flow-balancing feature. The zone valve includes end switch for activation of relay (pump), heat plant or other auxiliary devices. Do not mount actuators upside down.

Zone Valve



Part No.	Part Description	Each Qty.	Pkg. Qty.	List Price/Ea.
A3010525	3/4" Thermal Zone Valve, four-wire	1	25	\$183.35
A3010526	1" Thermal Zone Valve, four-wire	1	25	\$196.20
A3070525	3/4" MVA Zone Valve, four-wire	1	25	\$224.10
A3070526	1" MVA Zone Valve, four-wire	1	25	\$236.60

Uponor Radiant Heating and Cooling Systems

Pump Relay



The single-zone pump relay controls the operation of a single circulator or pump from a 24-volt signal. Relay includes secondary low-voltage terminals for boiler operation.

The Three-zone Multi-pump relay controls the operation of up to three pumps or circulators from dedicated 24-volt signals. Relay includes secondary low-voltage terminals for boiler operation and DHW priority options.

Part No.	Part Description	Each Qty.	Pkg. Qty.	List Price/Ea.
A3010100	Single-zone Pump Relay	1	-	\$107.95
A3080301	Three-zone Multi-pump Relay	1	-	\$301.10

Transformer



50 VA Transformer (24VAC) comes with a 4" x 4" metal mounting plate.

Part No.	Part Description	Each Qty.	Pkg. Qty.	List Price/Ea.
A3050050	50 VA Transformer	1	-	\$37.10

Uponor Radiant Heating and Cooling Systems

Fully Assembled Panels

The proPANEL 90 unit offers a simple pumping station, used for radiant heating or as a high-temperature loop. The proPANEL 90 is pre-wired to a control interface, meaning the pump relay is connected to the control interface using a Cat5 cable. The panel is prepared to connect to the Multifunction Climate Cöntrol™ hydronic controller.

The panel features 1-inch steel piping. The maximum recommended flow is 9 gpm.

Panel dimensions are 18" wide, 26" high and 7" deep; weighs 26 lbs.

proPANEL 90



Part No.	Part Description	Each Qty.	Pkg. Qty.	List Price/Ea.
NEW A3509000	proPANEL 90	1	-	\$1,760.00

The proPANEL 90Z unit offers a pumping station with zoning capability (two zones). Featuring 1-inch valves for zoning, the proPANEL 90Z is pre-wired to a control interface, meaning the pump relay is connected to the control interface using a Cat5 cable. The two actuators controlling the valves are also pre-wired into the interface. The panel is prepared to connect to the Multifunction Climate Cöntrol hydronic controller. The panel features 1-inch stainless steel piping on the primary side and 3/4-inch stainless steel piping on the secondary side. The maximum recommended flow is 4.5 gpm per outlet.

The panel features 1-inch stainless steel piping. The maximum recommended flow is 9 gpm.

Panel dimensions are 18" wide, 26" high and 7" deep; weighs 32 lbs.

proPANEL 90Z



Part No.	Part Description	Each Qty.	Pkg. Qty.	List Price/Ea.
NEW A3509002	proPANEL 90Z	1	-	\$2,550.00

The proPANEL 90M unit offers a one-temperature mixing and pumping station using a three-way motorized mixing valve (0-10V). The proPANEL 90MZ is controlled by connecting it to a Multifunction Climate Cöntrol.

The proPANEL 90M is pre-wired to a control interface, meaning the pump relay and the mixing valve is connected to the control interface using a Cat5 cable. Sensors are attached to the tubing to monitor the secondary supply temperature at the selected level. They are also pre-wired to the control interface.

The panel features 1-inch stainless steel piping. The maximum recommended flow is 9 gpm.

Panel dimensions are 18" wide, 26" high and 7" deep; weighs 30 lbs.

proPANEL 90M



Part No.	Part Description	Each Qty.	Pkg. Qty.	List Price/Ea.
NEW A3509500	proPANEL 90M	1	-	\$2,380.00

Uponor Radiant Heating and Cooling Systems

proPANEL 90MZ



The proPANEL 90MZ unit offers a one-temperature mixing and pumping station with zoning capacity (two zones). The proPANEL 90MZ is using 1-inch valves for zoning and a three-way motorized mixing valve (0-10V) for mixing. To control the proPANEL 90MZ, it must connect to a Uponor Multifunction Climate Cöntrol™. The proPANEL 90MZ is pre-wired to a control interface, meaning the pump relay and the mixing valve are connected to the control interface using a Cat5 cable. Sensors are attached to the tubing to maintain the secondary supply temperature at the selected level, those are also pre-wired to the control interface. The two actuators controlling the valves are also pre-wired into the control interface.

The Panel features 1" stainless steel piping. The maximum recommended flow is 4.5 gpm per outlet.

Panel dimensions are 18" wide, 26" high and 7" deep; weighs 37 lbs.

Part No.	Part Description	Each Qty.	Pkg. Qty.	List Price/Ea.
A3509502	proPANEL 90MZ	1	-	\$3,250.00

ProPEX Fittings

ProPEX Ring



A ProPEX Ring is required to make a ProPEX connection. The 1/2" rings now include a leading edge chamfer and integral stop edge to further simplify the use of ProPEX fittings. Red and blue print on the rings distinguishes hot and cold lines.

NEW
NEW

Part No.	Part Description	Pkg. Qty.	Case Qty.	List Price/Ea.
Q4690301	ProPEX Ring, 3/8" (red print)	50	500	\$0.17
Q4690302	ProPEX Ring, 3/8" (blue print)	50	500	\$0.17
Q4690511	ProPEX Ring with Stop, 1/2" (red print)	50	2,000	\$0.17
Q4690512	ProPEX Ring with Stop, 1/2" (blue print)	50	2,000	\$0.17
Q4680625	ProPEX Ring, 5/8" (black print)	50	1,000	\$0.35
Q4690751	ProPEX Ring, 3/4" (red print)	50	1,000	\$0.28
Q4690752	ProPEX Ring, 3/4" (blue print)	50	1,000	\$0.28
Q4681000	ProPEX Ring, 1" (blue print)	50	500	\$0.50
Q4681250	ProPEX Ring, 1 1/4" (black print)	10	200	\$0.75
Q4681500	ProPEX Ring, 1 1/2" (black print)	5	100	\$1.00
Q4682000	ProPEX Ring, 2" (blue print)	10	100	\$2.05

ProPEX EP Coupling



ProPEX EP Coupling makes PEX-to-PEX connections.

Note: ProPEX Tool is required. ProPEX Rings sold separately.

Part No.	Part Description	Pkg. Qty.	Case Qty.	List Price/Ea.
Q4773838	ProPEX EP Coupling, 3/8" PEX x 3/8" PEX	25	100	\$1.25
Q4775050	ProPEX EP Coupling, 1/2" PEX x 1/2" PEX	25	100	\$1.30
Q4776363	ProPEX EP Coupling, 5/8" PEX x 5/8" PEX	10	100	\$3.40
Q4777575	ProPEX EP Coupling, 3/4" PEX x 3/4" PEX	25	100	\$1.55
Q4771010	ProPEX EP Coupling, 1" PEX x 1" PEX	10	100	\$2.40

Uponor Radiant Heating and Cooling Systems

ProPEX Brass Coupling makes PEX-to-PEX connections.

Note: ProPEX Tool is required. ProPEX Rings sold separately.

Part No.	Part Description	Pkg. Qty.	Case Qty.	List Price/Ea.
Q4543838	ProPEX Brass Coupling, 3/8" PEX x 3/8" PEX	25	100	\$2.90
Q4545050	ProPEX Brass Coupling, 1/2" PEX x 1/2" PEX	25	100	\$2.55
Q4546363	ProPEX Brass Coupling, 5/8" PEX x 5/8" PEX	10	100	\$4.90
Q4547575	ProPEX Brass Coupling, 3/4" PEX x 3/4" PEX	25	100	\$5.35
Q4541010	ProPEX Brass Coupling, 1" PEX x 1" PEX	10	100	\$9.45
Q4542020	ProPEX Brass Coupling, 2" PEX x 2" PEX	5	-	\$97.10

ProPEX Brass Coupling



ProPEX DZR Brass Coupling makes PEX-to-PEX connections. DZR fittings are safe for direct burial in soil.

Note: ProPEX Tool is required. ProPEX Rings sold separately.

Part No.	Part Description	Each Qty.	Pkg. Qty.	List Price/Ea.
G4547575	ProPEX DZR Brass Coupling, 3/4" PEX x 3/4" PEX	-	10	\$8.30
G4541010	ProPEX DZR Brass Coupling, 1" PEX x 1" PEX	-	10	\$11.60
G4541313	ProPEX DZR Brass Coupling, 1 1/4" PEX x 1 1/4" PEX	-	10	\$25.75
G4541515	ProPEX DZR Brass Coupling, 1 1/2" PEX x 1 1/2" PEX	-	10	\$39.65
NEW G4542020	ProPEX DZR Brass Coupling, 2" PEX x 2" PEX	-	5	\$151.95

ProPEX DZR Brass Coupling



ProPEX Brass to Polyethylene (PE) Coupling transitions black PE tubing to Uponor PEX tubing. Product does not include hose clamps for the PE side of the coupling.

Note: ProPEX Tool is required. ProPEX Rings sold separately.

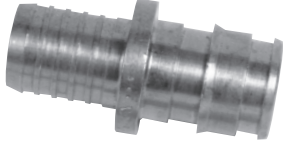
Part No.	Part Description	Pkg. Qty.	Case Qty.	List Price/Ea.
Q4591010	ProPEX Brass to PE Coupling, 1" PEX x 1" PE	10	100	\$16.65

ProPEX Brass to Polyethylene (PE) Coupling



Uponor Radiant Heating and Cooling Systems

ProPEX Brass to Polybutylene (PB) Coupling



ProPEX Brass to Polybutylene (PB) Coupling transitions PB tubing to Uponor PEX tubing. Product does not include the crimp ring for the PB side of the coupling.

Note: ProPEX Tool is required. ProPEX Rings sold separately.

Part No.	Part Description	Pkg. Qty.	Case Qty.	List Price/Ea.
Q4585050	ProPEX Brass to PB Coupling, 1/2" PEX x 1/2" PB	25	100	\$4.70
Q4587575	ProPEX Brass to PB Coupling, 3/4" PEX x 3/4" PB	25	100	\$8.40

ProPEX EP Elbow



ProPEX EP Elbow makes tight 90-degree connections for Uponor PEX tubing in supply and return mains.

Note: ProPEX Tool is required. ProPEX Rings sold separately.

Part No.	Part Description	Pkg. Qty.	Case Qty.	List Price/Ea.
Q4760500	ProPEX EP Elbow, 1/2" PEX x 1/2" PEX	25	100	\$1.50
Q4760750	ProPEX EP Elbow, 3/4" PEX x 3/4" PEX	25	100	\$1.85
Q4761000	ProPEX EP Elbow, 1" PEX x 1" PEX	10	100	\$3.90
Q4761250	ProPEX EP Elbow, 1 1/4" PEX x 1 1/4" PEX	10	100	\$10.10
Q4761500	ProPEX EP Elbow, 1 1/2" PEX x 1 1/2" PEX	10	100	\$12.80

ProPEX Brass Elbow



ProPEX Brass Elbow makes tight 90-degree connections for Uponor PEX tubing in supply and return mains.

Note: ProPEX Tool is required. ProPEX Rings sold separately.

Part No.	Part Description	Pkg. Qty.	Case Qty.	List Price/Ea.
Q4710500	ProPEX Brass Elbow, 1/2" PEX x 1/2" PEX	25	100	\$4.30
Q4710625	ProPEX Brass Elbow, 5/8" PEX x 5/8" PEX	25	100	\$7.65
Q4710750	ProPEX Brass Elbow, 3/4" PEX x 3/4" PEX	25	100	\$6.35
Q4711000	ProPEX Brass Elbow, 1" PEX x 1" PEX	10	100	\$10.50
Q4712000	ProPEX Brass Elbow, 2" PEX x 2" PEX	5	-	\$135.00

Uponor Radiant Heating and Cooling Systems

ProPEX DZR Brass Elbow makes tight 90-degree connections for Uponor PEX tubing in supply and return mains. DZR brass is safe for direct burial in soil.

Note: ProPEX Tool is required. ProPEX Rings sold separately.

Part No.	Part Description	Each Qty.	Pkg. Qty.	List Price/Ea.
G4711250	ProPEX DZR Brass Elbow, 1¼" PEX x 1¼" PEX	-	10	\$35.20
G4711500	ProPEX DZR Brass Elbow, 1½" PEX x 1½" PEX	-	10	\$65.20

ProPEX DZR Brass Elbow



ProPEX Brass Elbow with MIP makes 90-degree connections for ½" Uponor PEX tubing to ½" male NPT thread.

Note: ProPEX Tool is required. ProPEX Rings sold separately.

Part No.	Part Description	Pkg. Qty.	Case Qty.	List Price/Ea.
Q4125050	ProPEX Brass Elbow, ½" PEX x ½" MIP	25	100	\$7.50

ProPEX Brass Elbow with MIP



ProPEX EP Tee makes diverting connections for Uponor PEX tubing in supply and return mains. Branch size is listed last in the part description.

Note: ProPEX Tool is required. ProPEX Rings sold separately.

Part No.	Part Description	Pkg. Qty.	Case Qty.	List Price/Ea.
Q4755050	ProPEX EP Tee, ½" PEX x ½" PEX x ½" PEX	25	100	\$1.50
Q4757575	ProPEX EP Tee, ¾" PEX x ¾" PEX x ¾" PEX	25	100	\$2.45
Q4751010	ProPEX EP Tee, 1" PEX x 1" PEX x 1" PEX	10	100	\$4.40
Q4751313	ProPEX EP Tee, 1¼" PEX x 1¼" PEX x 1¼" PEX	10	100	\$11.45
Q4751515	ProPEX EP Tee, 1½" PEX x 1½" PEX x 1½" PEX	10	100	\$15.30

ProPEX EP Tee



Uponor Radiant Heating and Cooling Systems

ProPEX Brass Tee



ProPEX Brass Tee makes diverting connections for Uponor PEX tubing in supply and return mains. Branch size is listed last in the part description.

Note: ProPEX Tool is required. ProPEX Rings sold separately.

Part No.	Part Description	Pkg. Qty.	Case Qty.	List Price/Ea.
Q4705050	ProPEX Brass Tee, 1/2" PEX x 1/2" PEX x 1/2" PEX	25	100	\$5.25
Q4707575	ProPEX Brass Tee, 3/4" PEX x 3/4" PEX x 3/4" PEX	25	100	\$8.45
Q4701010	ProPEX Brass Tee, 1" PEX x 1" PEX x 1" PEX	10	100	\$15.75
Q4702000	ProPEX Brass Tee, 2" PEX x 2" PEX x 2" PEX	5	-	\$165.15

ProPEX DZR Brass Tee



ProPEX DZR Brass Tee makes diverting connections for Uponor PEX tubing in supply and return mains. Branch size is listed last in the part description. DZR brass is safe for direct burial in soil.

Note: ProPEX Tool is required. ProPEX Rings sold separately.

Part No.	Part Description	Each Qty.	Pkg. Qty.	List Price/Ea.
G4701250	ProPEX DZR Brass Tee, 1 1/4" PEX x 1 1/4" PEX x 1 1/4"	-	10	\$58.65
G4701500	ProPEX DZR Brass Tee, 1 1/2" PEX x 1 1/2" PEX x 1 1/2"	-	10	\$56.45

ProPEX EP Reducing Tee



ProPEX EP Reducing Tee makes diverting connections for Uponor PEX tubing in supply and return mains. Branch size is listed last in the part description.

Note: ProPEX Tool is required. ProPEX Rings sold separately.

Part No.	Part Description	Pkg. Qty.	Case Qty.	List Price/Ea.
NEW Q4755575	ProPEX EP Reducing Tee, 1/2" PEX x 1/2" PEX x 3/4" PEX	25	100	\$5.95
Q4757555	ProPEX EP Reducing Tee, 3/4" PEX x 1/2" PEX x 1/2" PEX	25	100	\$2.35
Q4757557	ProPEX EP Reducing Tee, 3/4" PEX x 1/2" PEX x 3/4" PEX	25	100	\$2.35
Q4757550	ProPEX EP Reducing Tee, 3/4" PEX x 3/4" PEX x 1/2" PEX	25	100	\$2.05
NEW Q4757710	ProPEX EP Reducing Tee, 3/4" PEX x 3/4" PEX x 1" PEX	10	100	\$8.85
Q4751775	ProPEX EP Reducing Tee, 1" PEX x 3/4" PEX x 3/4" PEX	10	100	\$3.85
Q4751751	ProPEX EP Reducing Tee, 1" PEX x 3/4" PEX x 1" PEX	10	100	\$4.60
Q4751150	ProPEX EP Reducing Tee, 1" PEX x 1" PEX x 1/2" PEX	10	100	\$4.05
Q4751175	ProPEX EP Reducing Tee, 1" PEX x 1" PEX x 3/4" PEX	10	100	\$4.45
Q4751317	ProPEX EP Reducing Tee, 1 1/4" PEX x 1" PEX x 3/4" PEX	10	100	\$9.05
Q4751311	ProPEX EP Reducing Tee, 1 1/4" PEX x 1" PEX x 1" PEX	10	100	\$10.55
Q4751337	ProPEX EP Reducing Tee, 1 1/4" PEX x 1 1/4" PEX x 3/4" PEX	10	100	\$10.60
Q4751331	ProPEX EP Reducing Tee, 1 1/4" PEX x 1 1/4" PEX x 1" PEX	10	100	\$10.95
Q4751517	ProPEX EP Reducing Tee, 1 1/2" PEX x 1" PEX x 3/4" PEX	10	100	\$12.70
Q4751511	ProPEX EP Reducing Tee, 1 1/2" PEX x 1" PEX x 1" PEX	10	100	\$12.70
Q4751557	ProPEX EP Reducing Tee, 1 1/2" PEX x 1 1/2" PEX x 3/4" PEX	10	100	\$13.65
Q4751551	ProPEX EP Reducing Tee, 1 1/2" PEX x 1 1/2" PEX x 1" PEX	10	100	\$14.05
Q4751553	ProPEX EP Reducing Tee, 1 1/2" PEX x 1 1/2" PEX x 1 1/4" PEX	10	100	\$14.45

Uponor Radiant Heating and Cooling Systems

ProPEX Brass Reducing Tee makes diverting connections for Uponor PEX tubing in supply and return mains. Branch size is listed last in the part description.

Note: ProPEX Tool is required. ProPEX Rings sold separately.

Part No.	Part Description	Pkg. Qty.	Case Qty.	List Price/Ea.
Q4705575	ProPEX Brass Reducing Tee, 1/2" PEX x 1/2" PEX x 3/4" PEX	25	100	\$8.85
Q4707555	ProPEX Brass Reducing Tee, 3/4" PEX x 1/2" PEX x 1/2" PEX	25	100	\$8.90
Q4707557	ProPEX Brass Reducing Tee, 3/4" PEX x 1/2" PEX x 3/4" PEX	25	100	\$8.45
Q4707550	ProPEX Brass Reducing Tee, 3/4" PEX x 3/4" PEX x 1/2" PEX	25	100	\$8.35
Q4707710	ProPEX Brass Reducing Tee, 3/4" PEX x 3/4" PEX x 1" PEX	10	100	\$13.50
Q4701775	ProPEX Brass Reducing Tee, 1" PEX x 3/4" PEX x 3/4" PEX	10	100	\$15.75
Q4701751	ProPEX Brass Reducing Tee, 1" PEX x 3/4" PEX x 1" PEX	10	100	\$15.75
Q4701150	ProPEX Brass Reducing Tee, 1" PEX x 1" PEX x 1/2" PEX	10	100	\$15.75
Q4701175	ProPEX Brass Reducing Tee, 1" PEX x 1" PEX x 3/4" PEX	10	100	\$15.75
Q4702575	ProPEX Brass Reducing Tee, 2" PEX x 1 1/2" PEX x 3/4" PEX	5	-	\$140.30
Q4702051	ProPEX Brass Reducing Tee, 2" PEX x 1 1/2" PEX x 1" PEX	5	-	\$134.85
Q4702053	ProPEX Brass Reducing Tee, 2" PEX x 1 1/2" PEX x 1 1/4" PEX	5	-	\$158.90
Q4702055	ProPEX Brass Reducing Tee, 2" PEX x 1 1/2" PEX x 1 1/2" PEX	5	-	\$170.00
Q4702275	ProPEX Brass Reducing Tee, 2" PEX x 2" PEX x 3/4" PEX	5	-	\$140.30
Q4702210	ProPEX Brass Reducing Tee, 2" PEX x 2" PEX x 1" PEX	5	-	\$140.05
Q4702213	ProPEX Brass Reducing Tee, 2" PEX x 2" PEX x 1 1/4" PEX	5	-	\$152.00
Q4702215	ProPEX Brass Reducing Tee, 2" PEX x 2" PEX x 1 1/2" PEX	5	-	\$161.15

ProPEX Brass Reducing Tee



ProPEX DZR Brass Reducing Tee makes diverting connections for Uponor PEX tubing in supply and return mains. Branch size is listed last in the part description. DZR Brass Fittings are safe for direct burial in soil.

Note: ProPEX Tool is required. ProPEX Rings sold separately.

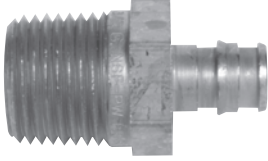
Part No.	Part Description	Each Qty.	Pkg. Qty.	List Price/Ea.
G4701317	ProPEX DZR Brass Reducing Tee, 1 1/4" PEX x 1" PEX x 3/4" PEX	-	10	\$58.70
G4701311	ProPEX DZR Brass Reducing Tee, 1 1/4" PEX x 1" PEX x 1" PEX	-	10	\$59.50
G4701337	ProPEX DZR Brass Reducing Tee, 1 1/4" PEX x 1 1/4" PEX x 3/4" PEX	-	10	\$41.55
G4701331	ProPEX DZR Brass Reducing Tee, 1 1/4" PEX x 1 1/4" PEX x 1" PEX	-	10	\$41.90
G4701537	ProPEX DZR Brass Reducing Tee, 1 1/2" PEX x 1 1/4" PEX x 3/4" PEX	-	10	\$76.45
G4701531	ProPEX DZR Brass Reducing Tee, 1 1/2" PEX x 1 1/4" PEX x 1" PEX	-	10	\$75.30
G4701533	ProPEX DZR Brass Reducing Tee, 1 1/2" PEX x 1 1/4" PEX x 1 1/4" PEX	-	10	\$79.10
G4701557	ProPEX DZR Brass Reducing Tee, 1 1/2" PEX x 1 1/2" PEX x 3/4" PEX	-	10	\$81.55
G4701551	ProPEX DZR Brass Reducing Tee, 1 1/2" PEX x 1 1/2" PEX x 1" PEX	-	10	\$76.20
G4701553	ProPEX DZR Brass Reducing Tee, 1 1/2" PEX x 1 1/2" PEX x 1 1/4" PEX	-	10	\$94.40

ProPEX DZR Brass Reducing Tee



Uponor Radiant Heating and Cooling Systems

ProPEX Brass Male Threaded Adapter

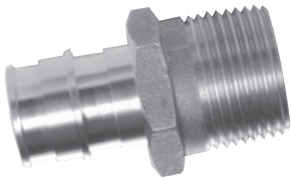


ProPEX Brass Male Threaded Adapter connects Uponor PEX tubing to male NPT threads and are intended as transition fittings from metal to PEX.

Note: ProPEX tool is required. ProPEX Rings sold separately.

Part No.	Part Description	Pkg. Qty.	Case Qty.	List Price/Ea.
Q4523850	ProPEX Brass Male Threaded Adapter, 3/8" PEX x 1/2" NPT	25	100	\$3.50
Q4525050	ProPEX Brass Male Threaded Adapter, 1/2" PEX x 1/2" NPT	25	100	\$2.85
Q4525075	ProPEX Brass Male Threaded Adapter, 1/2" PEX x 3/4" NPT	25	100	\$5.10
Q4526375	ProPEX Brass Male Threaded Adapter, 5/8" PEX x 3/4" NPT	10	100	\$5.90
Q4527575	ProPEX Brass Male Threaded Adapter, 3/4" PEX x 3/4" NPT	25	100	\$5.05
Q4527510	ProPEX Brass Male Threaded Adapter, 3/4" PEX x 1" NPT	10	100	\$8.40
Q4521075	ProPEX Brass Male Threaded Adapter, 1" PEX x 3/4" NPT	10	100	\$7.10
Q4521010	ProPEX Brass Male Threaded Adapter, 1" PEX x 1" NPT	10	100	\$10.10
Q4522020	ProPEX Brass Male Threaded Adapter, 2" PEX x 2" NPT	5	-	\$89.65

ProPEX DZR Brass Male Threaded Adapter



ProPEX DZR Brass Male Threaded Adapter connects Uponor PEX tubing to male NPT threads and are intended as transition fittings from metal to PEX. DZR Brass Fittings are safe for direct burial in soil.

Note: ProPEX Tool is required. ProPEX Rings sold separately.



Part No.	Part Description	Each Qty.	Pkg. Qty.	List Price/Ea.
G4527575	ProPEX DZR Brass Male Threaded Adapter, 3/4" PEX x 3/4" NPT	-	10	\$11.55
G4521010	ProPEX DZR Brass Male Threaded Adapter, 1" PEX x 1" NPT	-	10	\$16.25
G4521313	ProPEX DZR Brass Male Threaded Adapter, 1 1/4" PEX x 1 1/4" NPT	-	10	\$24.60
G4521515	ProPEX DZR Brass Male Threaded Adapter, 1 1/2" PEX x 1 1/2" NPT	-	10	\$34.05
G4522020	ProPEX DZR Brass Male Threaded Adapter, 2" PEX x 2" NPT	-	5	\$149.70

ProPEX Brass Female Threaded Adapter



ProPEX Brass Female Threaded Adapter connects Uponor PEX tubing to female NPT threads and are intended as transition fittings from metal to PEX.

Note: ProPEX Tool is required. ProPEX Rings sold separately.

Part No.	Part Description	Pkg. Qty.	Case Qty.	List Price/Ea.
Q4575050	ProPEX Brass Female Threaded Adapter, 1/2" PEX x 1/2" NPT	25	100	\$5.80
Q4575075	ProPEX Brass Female Threaded Adapter, 1/2" PEX x 3/4" NPT	25	100	\$6.35
Q4576375	ProPEX Brass Female Threaded Adapter, 5/8" PEX x 3/4" NPT	10	100	\$7.45
Q4577575	ProPEX Brass Female Threaded Adapter, 3/4" PEX x 3/4" NPT	25	100	\$6.50
Q4577510	ProPEX Brass Female Threaded Adapter, 3/4" PEX x 1" NPT	10	100	\$15.15
Q4571075	ProPEX Brass Female Threaded Adapter, 1" PEX x 3/4" NPT	10	100	\$11.10
Q4571010	ProPEX Brass Female Threaded Adapter, 1" PEX x 1" NPT	10	100	\$13.75
Q4572020	ProPEX Brass Female Threaded Adapter, 2" PEX x 2" NPT	5	-	\$151.65

Uponor Radiant Heating and Cooling Systems

ProPEX DZR Brass Female Threaded Adapters connect Uponor PEX tubing to female NPT threads and are intended as transition fittings from metal to PEX. DZR Brass Fittings are safe for direct burial in soil.

Note: ProPEX Tool is required. ProPEX Rings sold separately.

Part No.	Part Description	Each Qty.	Pkg. Qty.	List Price/Ea.
G4577575	ProPEX DZR Brass Female Threaded Adapter, 3/4" PEX x 3/4" NPT	-	10	\$14.75
G4571010	ProPEX DZR Brass Female Threaded Adapter, 1" PEX x 1" NPT	-	10	\$16.80
G4571313	ProPEX DZR Brass Female Threaded Adapter, 1 1/4" PEX x 1 1/4" NPT	-	10	\$38.65
G4571515	ProPEX DZR Brass Female Threaded Adapter, 1 1/2" PEX x 1 1/2" NPT	-	10	\$45.70

ProPEX DZR Brass Female Threaded Adapter

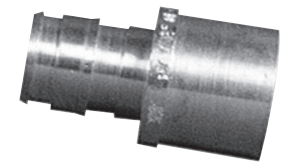


ProPEX Brass Sweat Adapter transitions Uponor PEX tubing to copper pipe.

Note: ProPEX Tool is required. ProPEX Rings sold separately.

Part No.	Part Description	Pkg. Qty.	Case Qty.	List Price/Ea.
Q4513850	ProPEX Brass Sweat Adapter, 3/8" PEX x 1/2" Copper	25	100	\$2.95
Q4515050	ProPEX Brass Sweat Adapter, 1/2" PEX x 1/2" Copper	25	100	\$2.05
Q4515075	ProPEX Brass Sweat Adapter, 1/2" PEX x 3/4" Copper	25	100	\$4.00
Q4516350	ProPEX Brass Sweat Adapter, 5/8" PEX x 1/2" Copper	10	100	\$4.20
Q4516375	ProPEX Brass Sweat Adapter, 5/8" PEX x 3/4" Copper	10	100	\$4.60
Q4517550	ProPEX Brass Sweat Adapter, 3/4" PEX x 1/2" Copper	25	100	\$4.45
Q4517575	ProPEX Brass Sweat Adapter, 3/4" PEX x 3/4" Copper	25	100	\$4.60
Q4517510	ProPEX Brass Sweat Adapter, 3/4" PEX x 1" Copper	10	100	\$7.05
Q4511010	ProPEX Brass Sweat Adapter, 1" PEX x 1" Copper	10	100	\$7.15
Q4512020	ProPEX Brass Sweat Adapter, 2" PEX x 2" Copper	5	-	\$74.40

ProPEX Brass Sweat Adapter



ProPEX DZR Brass Sweat Adapter transitions Uponor PEX tubing to copper pipe. DZR Brass Fittings are safe for direct burial in the soil.

Note: ProPEX Tool is required. ProPEX Rings sold separately.

Part No.	Part Description	Each Qty.	Pkg. Qty.	List Price/Ea.
G4517575	ProPEX DZR Brass Sweat Adapter, 3/4" PEX x 3/4" Copper	-	10	\$10.30
G4511010	ProPEX DZR Brass Sweat Adapter, 1" PEX x 1" Copper	-	10	\$13.65
G4511313	ProPEX DZR Brass Sweat Adapter, 1 1/4" PEX x 1 1/4" Copper	-	10	\$21.35
G4511515	ProPEX DZR Brass Sweat Adapter, 1 1/2" PEX x 1 1/2" Copper	-	10	\$30.70

ProPEX DZR Brass Sweat Adapter



Uponor Radiant Heating and Cooling Systems

ProPEX Brass Fitting Adapter

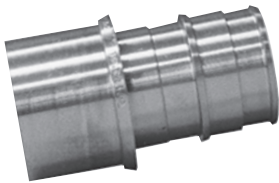


ProPEX Brass Fitting Adapter transitions Uponor PEX tubing to copper fittings.

Note: ProPEX Tool is required. ProPEX Rings sold separately.

Part No.	Part Description	Pkg. Qty.	Case Qty.	List Price/Ea.
Q4503850	ProPEX Brass Fitting Adapter, 3/8" PEX x 1/2" Copper	25	100	\$2.80
Q4505050	ProPEX Brass Fitting Adapter, 1/2" PEX x 1/2" Copper	25	100	\$2.00
Q4505075	ProPEX Brass Fitting Adapter, 1/2" PEX x 3/4" Copper	25	100	\$3.40
Q4506350	ProPEX Brass Fitting Adapter, 5/8" PEX x 1/2" Copper	10	100	\$4.15
Q4506375	ProPEX Brass Fitting Adapter, 5/8" PEX x 3/4" Copper	10	100	\$4.20
Q4507550	ProPEX Brass Fitting Adapter, 3/4" PEX x 1/2" Copper	25	100	\$3.95
Q4507575	ProPEX Brass Fitting Adapter, 3/4" PEX x 3/4" Copper	25	100	\$4.25
Q4507510	ProPEX Brass Fitting Adapter, 3/4" PEX x 1" Copper	10	100	\$5.20
Q4501010	ProPEX Brass Fitting Adapter, 1" PEX x 1" Copper	10	100	\$7.65
Q4502020	ProPEX Brass Fitting Adapter, 2" PEX x 2" Copper	5	-	\$66.15

ProPEX DZR Brass Fitting Adapter



ProPEX DZR Brass Fitting Adapter transitions Uponor PEX tubing to copper fittings. DZR Brass Fittings are safe for direct burial in soil.

Note: ProPEX Tool is required. ProPEX Rings sold separately.

Part No.	Part Description	Each Qty.	Pkg. Qty.	List Price/Ea.
G4501313	ProPEX DZR Brass Fitting Adapter, 1 1/4" PEX x 1 1/4" Copper	-	10	\$18.80
G4501515	ProPEX DZR Brass Fitting Adapter, 1 1/2" PEX x 1 1/2" Copper	-	10	\$31.10

ProPEX EP Plug



ProPEX EP Plug temporarily or permanently terminates the end of Uponor PEX tubing.

Note: ProPEX tool is required. ProPEX Rings sold separately.

Part No.	Part Description	Pkg. Qty.	Case Qty.	List Price/Ea.
Q4350500	ProPEX EP Plug for 1/2" PEX	25	100	\$1.00
Q4350750	ProPEX EP Plug for 3/4" PEX	25	100	\$1.35
Q4351000	ProPEX EP Plug for 1" PEX	10	100	\$2.10
NEW Q4351250	ProPEX EP Plug for 1 1/4" PEX	10	100	\$12.30
NEW Q4351500	ProPEX EP Plug for 1 1/2" PEX	10	100	\$18.90
NEW Q4352000	ProPEX EP Plug for 2" PEX	5	50	\$32.75

Uponor Radiant Heating and Cooling Systems

ProPEX Brass Plug temporarily or permanently terminates the end of Uponor PEX tubing.

Note: ProPEX Tool is required. ProPEX Rings sold separately.

Part No.	Part Description	Pkg. Qty.	Case Qty.	List Price/Ea.
Q4533838	ProPEX Brass Plug for 3/8" PEX	25	100	\$2.45
Q4535050	ProPEX Brass Plug for 1/2" PEX	25	100	\$1.75
Q4536363	ProPEX Brass Plug for 5/8" PEX	10	100	\$3.65
Q4537575	ProPEX Brass Plug for 3/4" PEX	25	100	\$3.45
Q4531000	ProPEX Brass Plug for 1" PEX	10	100	\$8.05
Q4532000	ProPEX Brass Plug for 2" PEX	5	-	\$92.50

ProPEX Brass Plug



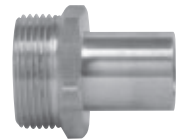
Manifold Adapters and Fittings

The Brass Sweat Adapter allows either a straight copper pipe or a copper fitting adapter to sweat to the brass manifold adapter. The R32 threaded side couples with the R32 union connection on the brass manifolds.

Note: This fitting is not compatible with the TruFLOW Sr.

Part No.	Part Description	Each Qty.	Pkg. Qty.	List Price/Ea.
A4143210	Brass Manifold Adapter, R32 x 3/4" Adapter or 1" Fitting Adapter	-	10	\$18.80
A4133210	Brass Manifold Adapter, R32 x 1" Adapter or 1 1/4" Fitting Adapter	-	10	\$18.80

Brass Manifold Combination Adapter/Fitting Adapter



Threaded Brass Manifold Adapter transitions the R32 manifold union nut to PEX or MLC tubing with QS-style fittings.

Note: This fitting is not compatible with the TruFLOW Sr.

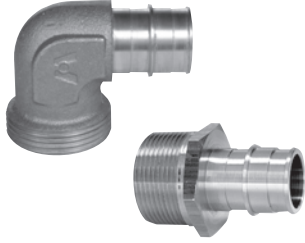
Part No.	Part Description	Each Qty.	Pkg. Qty.	List Price/Ea.
A4143220	Threaded Brass Manifold Straight Adapter, R32 x R20	-	10	\$23.25
A4143225	Threaded Brass Manifold Straight Adapter, R32 x R25	-	10	\$23.25
A2133275	Threaded Brass Manifold Bushing, R32 Male x 3/4" Female NPT	-	10	\$18.75
A2123210	Threaded Brass Manifold Bushing, R32 Male x 1" Female NPT	-	10	\$15.75

Threaded Brass Manifold Adapter and Bushing



Uponor Radiant Heating and Cooling Systems

ProPEX Manifold Adapter



ProPEX Manifold Adapter for brass manifolds transitions from the R32 manifold union nut to 3/4" and 1" Uponor PEX tubing.

Note: ProPEX Tool is required. ProPEX Rings sold separately. This fitting is not compatible with the TruFLOW Sr.

Part No.	Part Description	Each Qty.	Pkg. Qty.	List Price/Ea.
Q4143275	ProPEX Manifold Straight Adapter, R32 x 3/4" ProPEX	-	10	\$25.65
Q4143210	ProPEX Manifold Straight Adapter, R32 x 1" ProPEX	-	10	\$24.35
Q4153275	ProPEX Manifold Elbow Adapter, R32 x 3/4" ProPEX	-	10	\$25.65
Q4153210	ProPEX Manifold Elbow Adapter, R32 x 1" ProPEX	-	10	\$24.50

MLC Press Fitting Manifold Adapter



MLC Press Fitting Manifold Adapter transitions R32 manifold connections to 5/8", 3/4" and 1" MLC tubing.

Note: The Mini-Press Battery Tool or MLC Press Fitting Manual Tool is required. This fitting is not compatible with the TruFLOW Sr.

Part No.	Part Description	Each Qty.	Pkg. Qty.	List Price/Ea.
D4143263	MLC Press Fitting Manifold Straight Adapter, R32 x 5/8" MLC	-	10	\$25.15
D4143275	MLC Press Fitting Manifold Straight Adapter, R32 x 3/4" MLC	-	10	\$25.15
D4143210	MLC Press Fitting Manifold Straight Adapter, R32 x 1" MLC	-	10	\$25.15
D4153263	MLC Press Fitting Manifold Elbow Adapter, R32 x 5/8" MLC	-	10	\$26.10
D4153275	MLC Press Fitting Manifold Elbow Adapter, R32 x 3/4" MLC	-	10	\$26.10
D4153210	MLC Press Fitting Manifold Elbow Adapter, R32 x 1" MLC	-	10	\$26.10

Brass Manifold Pressure Test Kit



Brass Manifold Pressure Test Kit contains R32 x 3/4" manifold bushing, R32 solid brass plug, 3/4" brass nipple and pressure gauge assembly (100 psi). Schraeder valve is included.

Note: This fitting is not compatible with the TruFLOW Sr.

Part No.	Part Description	Each Qty.	Pkg. Qty.	List Price/Ea.
E6122000	Brass Manifold Pressure Test Kit	1	-	\$70.75

Uponor Radiant Heating and Cooling Systems

Brass Manifold Loop End Cap closes off unused QS20 loop connections. Install the supplied Brass Manifold Loop End Cap Gasket (A2400020) with the Loop End Cap to ensure a proper seal.

Note: This fitting is not compatible with the TruFLOW Sr.

Brass Manifold Loop End Cap

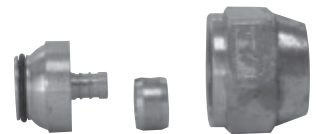


Part No.	Part Description	Each Qty.	Pkg. Qty.	List Price/Ea.
A2080020	Brass Manifold Loop End Cap	-	10	\$7.00
A2400020	Brass Manifold Loop End Cap Gasket, spare part	-	10	\$2.70

The QS-style Compression Fitting Assembly with o-ring connects $\frac{5}{16}$ ", $\frac{3}{8}$ ", $\frac{1}{2}$ ", and $\frac{5}{8}$ " Uponor PEX tubing to Uponor brass manifolds and R20 fittings. Sold as a three-piece component. The QS-style compression rings and o-rings are also sold separately.

Note: This fitting is not compatible with the TruFLOW Sr.

QS-style Compression Fitting Assembly



Part No.	Part Description	Each Qty.	Pkg. Qty.	List Price/Ea.
A4020313	$\frac{5}{16}$ " QS-style Compression Fitting Assembly, R20 thread	-	10	\$11.15
A4020375	$\frac{3}{8}$ " QS-style Compression Fitting Assembly, R20 thread	-	10	\$11.15
A4020500	$\frac{1}{2}$ " QS-style Compression Fitting Assembly, R20 thread	-	10	\$8.50
A4020625	$\frac{5}{8}$ " QS-style Compression Fitting Assembly, R20 thread	-	10	\$11.85
A4021116	Replacement O-ring for insert (R20)	-	10	\$0.30

The QS-style Compression Fitting Assembly with o-ring connects $\frac{5}{8}$ " and $\frac{3}{4}$ " Uponor PEX tubing to the TruFLOW Sr. and 2" Copper Valved Manifolds and other R25 male threaded fittings.

Part No.	Part Description	Each Qty.	Pkg. Qty.	List Price/Ea.
A4030625	$\frac{5}{8}$ " QS-style Compression Fitting Assembly, R25 thread	-	10	\$15.45
A4020750	$\frac{3}{4}$ " QS-style Compression Fitting Assembly, R25 thread	-	10	\$15.00
A4021000	Replacement O-ring for insert (R25)	-	10	\$0.40

Uponor Radiant Heating and Cooling Systems

QS-style Compression Ring



The QS-style Compression Ring (replacement part) is designed and tested for use with Uponor PEX tubing.

Note: Do not substitute similar compression rings.

Part No.	Part Description	Each Qty.	Pkg. Qty.	List Price/Ea.
A4160313	5/16" QS-style Compression Ring, spare part	-	10	\$3.05
A4160375	3/8" QS-style Compression Ring, spare part	-	10	\$2.90
A4160500	1/2" QS-style Compression Ring, spare part	-	10	\$2.70
A4160625	5/8" QS-style Compression Ring, spare part	-	10	\$2.90
A4160750	3/4" QS-style Compression Ring, spare part	-	10	\$3.65

ProPEX Fitting Assembly



ProPEX Fitting Assembly with ProPEX insert connects 3/8" through 3/4" Uponor PEX tubing to the brass manifolds. Sold as a two-piece assembly, it includes a ProPEX insert and R20 swivel nut.

Note: ProPEX Tool is required. ProPEX Rings sold separately. This fitting is not compatible with the TruFLOW Sr.

Part No.	Part Description	Each Qty.	Pkg. Qty.	List Price/Ea.
Q4020375	3/8" ProPEX Fitting Assembly, R20 thread	-	10	\$9.60
Q4020500	1/2" ProPEX Fitting Assembly, R20 thread	-	10	\$7.05
Q4020625	5/8" ProPEX Fitting Assembly, R20 thread	-	10	\$8.65
Q4020750	3/4" ProPEX Fitting Assembly, R20 thread	-	10	\$9.75
A4021116	Replacement O-ring for insert (R20)	-	10	\$0.30

ProPEX Fitting Assembly with ProPEX insert connects 5/8" through 3/4" Uponor PEX tubing to the TruFLOW Sr. Manifolds and 2" Copper Valved Manifolds and other R25 male threaded fittings. Sold as a two-piece assembly, it includes a ProPEX insert and R25 swivel nut.

Note: ProPEX Tool is required. ProPEX Rings sold separately. This fitting is not compatible with TruFLOW Jr. or TruFLOW Classic.

Part No.	Part Description	Each Qty.	Pkg. Qty.	List Price/Ea.
Q4030625	5/8" ProPEX Fitting Assembly, R25 thread	-	10	\$15.15
Q4030750	3/4" ProPEX Fitting Assembly, R25 thread	-	10	\$14.75

Uponor Radiant Heating and Cooling Systems

MLC Tubing Compression Fitting Assembly, made of heat-treated brass, connects 1/2" and 5/8" MLC tubing to brass manifolds.

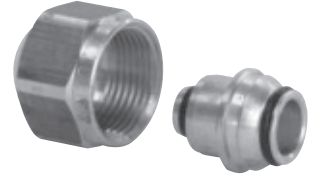
Note: This fitting is not compatible with the TruFLOW Sr.

Part No.	Part Description	Each Qty.	Pkg. Qty.	List Price/Ea.
D4120500	1/2" MLC Tubing Compression Fitting Assembly, R20 thread	-	20	\$9.55
D4120625	5/8" MLC Tubing Compression Fitting Assembly, R20 thread	-	20	\$10.45

The MLC Tubing Compression Fitting Assembly with o-ring connects 3/4" Uponor MLC tubing to the TruFLOW Sr. and 2" Copper Valved Manifolds and other R25 male threaded fittings.

Part No.	Part Description	Each Qty.	Pkg. Qty.	List Price/Ea.
D4120750	3/4" MLC Tubing Compression Fitting Assembly, R25 thread (for TruFlow Sr. Manifolds)	-	20	\$15.55

MLC Tubing Compression Fitting Assembly



MLC Press Fitting Assembly connects 1/2" and 5/8" MLC tubing to brass manifolds.

Note: The Mini-Press Battery Tool or MLC Press Fitting Manual Tool is required. This fitting is not compatible with the TruFLOW Sr.

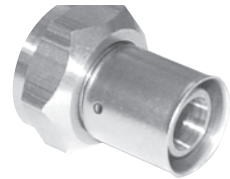
Part No.	Part Description	Each Qty.	Pkg. Qty.	List Price/Ea.
D4020500	1/2" MLC Press Fitting Assembly, R20 thread	-	10	\$12.55
D4020625	5/8" MLC Press Fitting Assembly, R20 thread	-	10	\$14.75

MLC Press Fitting Assembly connects 5/8" and 3/4" MLC tubing to the TruFLOW Sr. and 2" Copper Valved Manifolds and other R25 male threaded fittings.

Note: The Mini-Press Battery Tool or MLC Press Fitting Manual Tool is required.

Part No.	Part Description	Each Qty.	Pkg. Qty.	List Price/Ea.
D4030625	5/8" MLC Press Fitting Assembly, R25 thread	-	10	\$16.10
D4030750	3/4" MLC Press Fitting Assembly, R25 thread	-	10	\$16.25

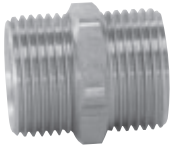
MLC Press Fitting Assembly



Uponor Radiant Heating and Cooling Systems

Tubing Transition Fittings

QS-style Coupling Nipple



The QS-style Coupling Nipple (brass) and the appropriate fitting assembly connect $\frac{5}{16}$ ", $\frac{3}{8}$ ", $\frac{1}{2}$ ", $\frac{5}{8}$ " or $\frac{3}{4}$ " Uponor tubing together.

Part No.	Part Description	Each Qty.	Pkg. Qty.	List Price/Ea.
A4322020	QS-style Coupling Nipple, R20 x R20	-	10	\$7.25
A4322525	QS-style Coupling Nipple, R25 x R25 (for $\frac{3}{4}$ " tubing only)	-	10	\$14.10

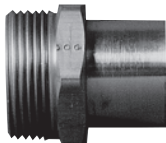
QS-style Conversion Nipple



The QS-style Conversion Nipple (brass) and the appropriate fitting connect $\frac{5}{16}$ ", $\frac{3}{8}$ ", $\frac{1}{2}$ ", $\frac{5}{8}$ " or $\frac{3}{4}$ " Uponor tubing to $\frac{1}{2}$ ", $\frac{3}{4}$ " and 1" NPT.

Part No.	Part Description	Each Qty.	Pkg. Qty.	List Price/Ea.
A4322050	QS-style Conversion Nipple, R20 x $\frac{1}{2}$ " NPT	-	10	\$7.75
A4322075	QS-style Conversion Nipple, R20 x $\frac{3}{4}$ " NPT	-	10	\$7.40
A4322575	QS-style Conversion Nipple, R25 x $\frac{3}{4}$ " NPT (for $\frac{3}{4}$ " tubing only)	-	10	\$10.15
A4322510	QS-style Conversion Nipple, R25 x 1" NPT, (for $\frac{3}{4}$ " tubing only)	-	10	\$14.20

QS-style Copper Adapter



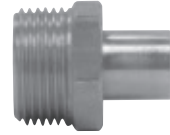
Use R20 QS-style Copper Adapter (R20 or R25) and appropriate QS-style Fitting Assembly to transition Uponor PEX tubing to $\frac{1}{2}$ " and $\frac{3}{4}$ " copper pipe.

Part No.	Part Description	Each Qty.	Pkg. Qty.	List Price/Ea.
A4332050	QS-style Copper Adapter, R20 x $\frac{1}{2}$ " Copper	-	10	\$6.05
A4332075	QS-style Copper Adapter, R20 x $\frac{3}{4}$ " Copper	-	10	\$5.80
A4332575	QS-style Copper Adapter, R25 x $\frac{3}{4}$ " Copper (for $\frac{3}{4}$ " tubing only)	-	10	\$10.80

Uponor Radiant Heating and Cooling Systems

Use R20 QS-style Copper Fitting Adapter and appropriate QS-style Fitting Assembly to transition Uponor PEX tubing to 1/2" and 3/4" copper fittings.

QS-style Copper Fitting Adapter



Part No.	Part Description	Each Qty.	Pkg. Qty.	List Price/Ea.
A4342050	QS-style Copper Fitting Adapter, R20 x 1/2" Copper	-	10	\$6.95
A4342075	QS-style Copper Fitting Adapter, R20 x 3/4" Copper	-	10	\$6.60
A4342575	QS-style Copper Fitting Adapter, R25 X 3/4" Copper (for 3/4" tubing only)	-	10	\$18.45
A4342510	QS-style Copper Fitting Adapter, R25 X 1" Copper (for 3/4" tubing only)	-	10	\$10.70

Use 5/16" Repair Coupling to connect 5/16" Wirsbo hePEX plus together.

Note: One-piece Repair Coupling comes as an assembly. No other fittings are necessary.

Repair Coupling



Part No.	Part Description	Each Qty.	Pkg. Qty.	List Price/Ea.
A4010313	5/16" Repair Coupling	-	10	\$23.55

Uponor Radiant Heating and Cooling Systems

Baseboard Fittings

QS-style Baseboard Elbows and Tees



QS-style Baseboard Elbow (brass) connects 1/2", 5/8" and 3/4" Uponor PEX tubing to 3/4-inch copper baseboard with the appropriate QS-style fitting assembly.

Note: QS-style Fitting Assembly is required.

Part No.	Part Description	Each Qty.	Pkg. Qty.	List Price/Ea.
A4382075	QS-style Baseboard Elbow, R20 X 3/4" Copper Adapter	-	10	\$11.75
A4372075	QS-style Baseboard Elbow, R20 x 3/4" Copper Fitting Adapter	-	10	\$17.35

QS-style Baseboard Tee (brass) connects 1/2" and 5/8" Uponor PEX tubing to 3/4-inch copper baseboard (includes 1/8-inch threads for air vent).

Part No.	Part Description	Each Qty.	Pkg. Qty.	List Price/Ea.
A4392075	QS-style Baseboard Tee, R20 x 3/4" Copper Adapter	-	10	\$18.45

ProPEX Baseboard Elbows and Tees



ProPEX Baseboard Elbow (brass) connects 1/2", 5/8" and 3/4" Uponor PEX tubing products to 3/4-inch copper baseboard.

Note: ProPEX Tool is required. ProPEX Rings sold separately.

Part No.	Part Description	Each Qty.	Pkg. Qty.	List Price/Ea.
Q4385075	ProPEX Baseboard Elbow, 1/2" PEX x 3/4" Copper Adapter	-	10	\$12.65
Q4386375	ProPEX Baseboard Elbow, 5/8" PEX x 3/4" Copper Adapter	-	10	\$12.65
Q4387575	ProPEX Baseboard Elbow, 3/4" PEX x 3/4" Copper Adapter	-	10	\$13.45
Q4375075	ProPEX Baseboard Elbow, 1/2" PEX x 3/4" Copper Fitting Adapter	-	10	\$13.45
Q4376375	ProPEX Baseboard Elbow, 5/8" PEX x 3/4" Copper Fitting Adapter	-	10	\$13.45
Q4377575	ProPEX Baseboard Elbow, 3/4" PEX x 3/4" Copper Fitting Adapter	-	10	\$14.05

ProPEX Baseboard Tee (brass) connects 1/2" and 5/8" Uponor PEX tubing products to 3/4-inch copper baseboard (includes 1/8-inch threads for air vent). Air vent is not included.

Part No.	Part Description	Each Qty.	Pkg. Qty.	List Price/Ea.
Q4395075	ProPEX Baseboard Tee, 1/2" PEX x 3/4" Copper Adapter	-	10	\$14.05
Q4396375	ProPEX Baseboard Tee, 5/8" PEX x 3/4" Copper Adapter	-	10	\$14.75
Q4397575	ProPEX Baseboard Tee, 3/4" PEX x 3/4" Copper Adapter	-	10	\$15.35

Uponor Radiant Heating and Cooling Systems

MLC Press Fitting Baseboard Elbow connects $\frac{1}{2}$ ", $\frac{5}{8}$ " and $\frac{3}{4}$ " MLC tubing to $\frac{3}{4}$ -inch copper baseboard. Fittings come disassembled for sweating.

Note: The Mini-Press Battery Tool or MLC Press Fitting Manual Tool is required.

MLC Press Fitting Baseboard Elbows and Tees



Part No.	Part Description	Each Qty.	Pkg. Qty.	List Price/Ea.
D4385075	MLC Press Fitting Baseboard Elbow, $\frac{1}{2}$ " MLC Tubing x $\frac{3}{4}$ " Copper Adapter	-	10	\$20.45
D4386375	MLC Press Fitting Baseboard Elbow, $\frac{5}{8}$ " MLC Tubing x $\frac{3}{4}$ " Copper Adapter	-	10	\$20.45
D4387575	MLC Press Fitting Baseboard Elbow, $\frac{3}{4}$ " MLC Tubing x $\frac{3}{4}$ " Copper Adapter	-	10	\$20.45
D4375075	MLC Press Fitting Baseboard Elbow, $\frac{1}{2}$ " MLC Tubing x $\frac{3}{4}$ " Copper Fitting Adapter	-	10	\$19.85
D4376375	MLC Press Fitting Baseboard Elbow, $\frac{5}{8}$ " MLC Tubing x $\frac{3}{4}$ " Copper Fitting Adapter	-	10	\$19.85
D4377575	MLC Press Fitting Baseboard Elbow, $\frac{3}{4}$ " MLC Tubing x $\frac{3}{4}$ " Copper Fitting Adapter	-	10	\$19.85

The MLC Press Fitting Baseboard Tee connects $\frac{1}{2}$ " and $\frac{5}{8}$ " MLC tubing to $\frac{3}{4}$ -inch copper baseboard. Tee features $\frac{1}{8}$ -inch thread for air vent. Fittings come disassembled for soldering.

Part No.	Part Description	Each Qty.	Pkg. Qty.	List Price/Ea.
D4395075	MLC Press Fitting Baseboard Tee, $\frac{1}{2}$ " MLC Tubing x $\frac{3}{4}$ " Copper Adapter	-	10	\$20.75
D4396375	MLC Press Fitting Baseboard Tee, $\frac{5}{8}$ " MLC Tubing x $\frac{3}{4}$ " Copper Adapter	-	10	\$20.75

Uponor Radiant Heating and Cooling Systems

MLC Press Fittings

MLC Press Fitting Brass Coupling



MLC Press Fitting Brass Coupling connects two pieces of MLC tubing.

Note: The Mini-Press Battery Tool or MLC Press Fitting Manual Tool is required.

Part No.	Part Description	Each Qty.	Pkg. Qty.	List Price/Ea.
D4545050	MLC Press Fitting Brass Coupling, 1/2" MLC Tubing x 1/2" MLC Tubing	-	10	\$6.10
D4546363	MLC Press Fitting Brass Coupling, 5/8" MLC Tubing x 5/8" MLC Tubing	-	10	\$14.35
D4547575	MLC Press Fitting Brass Coupling, 3/4" MLC Tubing x 3/4" MLC Tubing	-	10	\$15.15
D4541010	MLC Press Fitting Brass Coupling, 1" MLC Tubing x 1" MLC Tubing	-	10	\$18.65

MLC Press Fitting Brass Elbow



MLC Press Fitting Elbow makes 90-degree connections for MLC tubing.

Note: The Mini-Press Battery Tool or MLC Press Fitting Manual Tool is required.

Part No.	Part Description	Each Qty.	Pkg. Qty.	List Price/Ea.
D4710625	MLC Press Fitting Brass Elbow, 5/8" MLC Tubing x 5/8" MLC Tubing	-	10	\$9.50
D4710750	MLC Press Fitting Brass Elbow, 3/4" MLC Tubing x 3/4" MLC Tubing	-	10	\$12.75
D4711000	MLC Press Fitting Brass Elbow, 1" MLC Tubing x 1" MLC Tubing	-	10	\$17.75

MLC Press Fitting Brass Tee



MLC Press Fitting Brass Tee makes diverting connections for MLC tubing in supply and return mains.

Note: The Mini-Press Battery Tool or MLC Press Fitting Manual Tool is required.

Part No.	Part Description	Each Qty.	Pkg. Qty.	List Price/Ea.
D4707575	MLC Press Fitting Brass Tee, 3/4" MLC Tubing x 3/4" MLC Tubing x 3/4" MLC Tubing	-	10	\$25.10
D4701010	MLC Press Fitting Brass Tee, 1" MLC Tubing x 1" MLC Tubing x 1" MLC Tubing	-	10	\$29.75
D4707550	MLC Press Fitting Brass Reducing Tee, 3/4" MLC Tubing x 3/4" MLC Tubing x 1/2" MLC Tubing	-	10	\$25.10
◀ D4707563	MLC Press Fitting Brass Reducing Tee, 3/4" MLC Tubing x 3/4" MLC Tubing x 5/8" MLC Tubing	-	10	\$25.10
D4701150	MLC Press Fitting Brass Reducing Tee, 1" MLC Tubing x 1" MLC Tubing x 1/2" MLC Tubing	-	10	\$29.75
◀ D4701163	MLC Press Fitting Brass Reducing Tee, 1" MLC Tubing x 1" MLC Tubing x 5/8" MLC Tubing	-	10	\$29.75
D4701175	MLC Press Fitting Brass Reducing Tee, 1" MLC Tubing x 1" MLC Tubing x 3/4" MLC Tubing	-	10	\$29.75

◀ Discontinued item; available while quantities last. Please contact Uponor Customer Service for availability. All sales are final.

Uponor Radiant Heating and Cooling Systems

MLC Press Fitting Brass Male NPT Threaded Adapter connects MLC tubing to male NPT threads.

Note: The Mini-Press Battery Tool or MLC Press Fitting Manual Tool is required.

Part No.	Part Description	Each Qty.	Pkg. Qty.	List Price/Ea.
D4525075	MLC Press Fitting Brass Male Threaded Adapter, 1/2" MLC Tubing x 3/4" NPT	-	10	\$15.55
D4526375	MLC Press Fitting Brass Male Threaded Adapter, 5/8" MLC Tubing x 3/4" NPT	-	10	\$16.65
D4527575	MLC Press Fitting Brass Male Threaded Adapter, 3/4" MLC Tubing x 3/4" NPT	-	10	\$18.75
D4527510	MLC Press Fitting Brass Male Threaded Adapter, 3/4" MLC Tubing x 1" NPT	-	10	\$21.95
D4521010	MLC Press Fitting Brass Male Threaded Adapter, 1" MLC Tubing x 1" NPT	-	10	\$25.90

MLC Press Fitting Brass Male Threaded Adapter



MLC Press Fitting Brass Female NPT Threaded Adapter connects MLC tubing to female NPT threads.

Note: The Mini-Press Battery Tool or MLC Press Fitting Manual Tool is required.

Part No.	Part Description	Each Qty.	Pkg. Qty.	List Price/Ea.
D4575075	MLC Press Fitting Brass Female Threaded Adapter, 1/2" MLC Tubing x 3/4" NPT	-	10	\$14.10
D4576375	MLC Press Fitting Brass Female Threaded Adapter, 5/8" MLC Tubing x 3/4" NPT	-	10	\$15.15
D4577575	MLC Press Fitting Brass Female Threaded Adapter, 3/4" MLC Tubing x 3/4" NPT	-	10	\$17.10
D4577510	MLC Press Fitting Brass Female Threaded Adapter, 3/4" MLC Tubing x 1" NPT	-	10	\$23.45
D4571010	MLC Press Fitting Brass Female Threaded Adapter, 1" MLC Tubing x 1" NPT	-	10	\$32.90

MLC Press Fitting Brass Female Threaded Adapter



Uponor Radiant Heating and Cooling Systems

MLC Press Fitting Brass Sweat Adapter

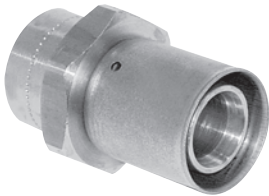


MLC Press Fitting Brass Sweat Adapter transitions MLC tubing to copper pipe. Fittings come disassembled for sweating.

Note: The Mini-Press Battery Tool or MLC Press Fitting Manual Tool is required.

Part No.	Part Description	Each Qty.	Pkg. Qty.	List Price/Ea.
D4515050	MLC Press Fitting Brass Sweat Adapter, 1/2" MLC Tubing x 1/2" Copper	-	10	\$12.85
D4515075	MLC Press Fitting Brass Sweat Adapter, 1/2" MLC Tubing x 3/4" Copper	-	10	\$8.85
D4516375	MLC Press Fitting Brass Sweat Adapter, 5/8" MLC Tubing x 3/4" Copper	-	10	\$16.55
D4517575	MLC Press Fitting Brass Sweat Adapter, 3/4" MLC Tubing x 3/4" Copper	-	10	\$12.60
D4517510	MLC Press Fitting Brass Sweat Adapter, 3/4" MLC Tubing x 1" Copper	-	10	\$16.15
D4511010	MLC Press Fitting Brass Sweat Adapter, 1" MLC Tubing x 1" Copper	-	10	\$17.60

MLC Press Fitting Brass Fitting Adapter



MLC Press Fitting Brass Fitting Adapter transitions MLC tubing to copper fittings. Fittings come disassembled for sweating.

Note: The Mini-Press Battery Tool or MLC Press Fitting Manual Tool is required.

Part No.	Part Description	Each Qty.	Pkg. Qty.	List Price/Ea.
D4505050	MLC Press Fitting Brass Fitting Adapter, 1/2" MLC Tubing x 1/2" Copper	-	10	\$18.95
D4505075	MLC Press Fitting Brass Fitting Adapter, 1/2" MLC Tubing x 3/4" Copper	-	10	\$9.70
D4506375	MLC Press Fitting Brass Fitting Adapter, 5/8" MLC Tubing x 3/4" Copper	-	10	\$9.05
D4507575	MLC Press Fitting Brass Fitting Adapter, 3/4" MLC Tubing x 3/4" Copper	-	10	\$12.65
D4507510	MLC Press Fitting Brass Fitting Adapter, 3/4" MLC Tubing x 1" Copper	-	10	\$25.30
D4501010	MLC Press Fitting Brass Fitting Adapter, 1" MLC Tubing x 1" Copper	-	10	\$17.80

Uponor Radiant Heating and Cooling Systems

Heat-transfer Panels and Plates

The 1/2-inch plywood panels are attached to an aluminum heat transfer sheet. Use with 5/16" Wirsbo hePEX™ plus only.

Cut your labor in half with Uponor's fully assembled Quik Trak® panels, which consist of six panels fastened together with strapping tape. The panels are staggered (2 inches) on both ends to aid alignment. Use with Uponor 5/16" Wirsbo hePEX plus tubing only. One package includes six panels.

Part No.	Part Description	Each Qty.	Pkg. Qty.	List Price/Ea.
A5060701	Quik Trak 7" x 48" panels	-	10	\$16.15
A5060761	Quik Trak 7" x 48" x 6 panels (fully assembled set)	1	-	\$108.05

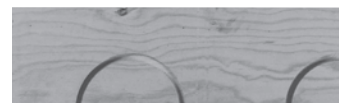
Quik Trak® Panel



Quik Trak Return Panels are designed with a U-shaped groove to complete tubing turns. Each return panel is shipped with a separate aluminum sheet for installation beneath the panel. Use with 5/16" Wirsbo hePEX plus tubing only.

Part No.	Part Description	Each Qty.	Pkg. Qty.	List Price/Ea.
A5060702	Quik Trak 7" x 48" Return Panels	-	10	\$23.40

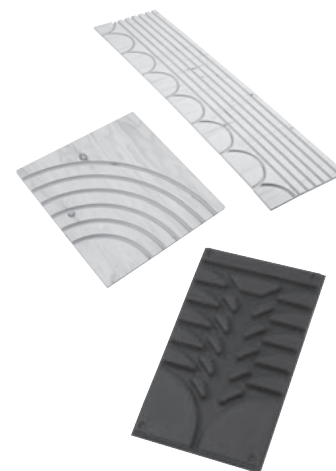
Quik Trak Return Panel



Quik Trak Combo Panels simplify installations when multiple tubing runs need to be accommodated in a tight space back to the manifold. Each panel is shipped with a separate aluminum sheet for installation beneath the panel. Use with 5/16" Wirsbo hePEX plus tubing only.

Part No.	Part Description	Each Qty.	Pkg. Qty.	List Price/Ea.
NEW A5060712	Quik Trak 12" x 48" Combo Panel, 6 runs with return	-	5	\$39.95
NEW A5060722	Quik Trak 12" x 12" Combo 90, 6 runs	-	5	\$10.85
NEW A5060732	Quik Trak 7" x 12" Combo Access Panel, 6 runs with 1 access	-	6	\$10.55

Quik Trak Combo Panels



Uponor Radiant Heating and Cooling Systems

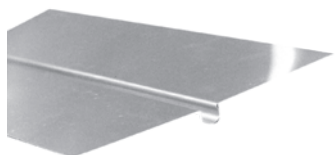
Joist Trak™ Panel



Use Joist Trak™ extruded aluminum heat transfer panels with $\frac{3}{8}$ " or $\frac{1}{2}$ " Uponor PEX in floor joist applications. Each panel is 4 feet long by 4 inches wide, and comes packaged 20 per box. It provides easy installation, increased heat transfer and superior comfort.

Part No.	Part Description	Each Qty.	Pkg. Qty.	List Price/Ea.
A5080375	Joist Trak, $\frac{3}{8}$ " Heat Transfer Panel	-	20	\$12.60
A5080500	Joist Trak, $\frac{1}{2}$ " Heat Transfer Panel	-	20	\$12.60

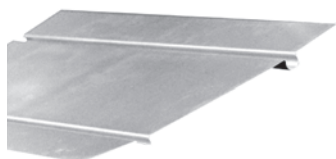
Single-groove Aluminum Heat Emission Plate



Single-groove Aluminum Heat Emission Plate is available for $\frac{1}{2}$ " Uponor PEX tubing.

Part No.	Part Description	Each Qty.	Pkg. Qty.	List Price/Ea.
◀ A5055001	$\frac{1}{2}$ " Single-groove Aluminum Heat Emission Plate	-	50	\$15.10

Double-groove Aluminum Heat Emission Plate



Double-groove Aluminum Heat Emission Plate is available for $\frac{3}{8}$ " and $\frac{1}{2}$ " Uponor PEX tubing. Plates come $12\frac{1}{2}$ inches wide to accommodate floor trusses.

Part No.	Part Description	Each Qty.	Pkg. Qty.	List Price/Ea.
◀ A5073752	$\frac{3}{8}$ " Double-groove Aluminum Heat Emission Plate	-	50	\$17.55
◀ A5075002	$\frac{1}{2}$ " Double-groove Aluminum Heat Emission Plate	-	50	\$17.40

◀ Discontinued item; available while quantities last. Please contact Uponor Customer Service for availability. All sales are final.

Uponor Radiant Heating and Cooling Systems

Tubing Supports

Plastic Bend Support (glass-reinforced nylon) provides rigid 90-degree bend and sleeve for $\frac{3}{8}$ ", $\frac{1}{2}$ " and $\frac{3}{4}$ " Uponor PEX tubing.

Plastic Bend Support



NEW

Part No.	Part Description	Each Qty.	Pkg. Qty.	List Price/Ea.
A5150375	$\frac{3}{8}$ " Plastic Bend Support	-	25	\$1.35
A5250500	$\frac{1}{2}$ " Plastic Bend Support	-	25	\$1.40
A5150750	$\frac{3}{4}$ " Plastic Bend Support	-	50	\$2.85

Metal Bend Support (zinc-plated) provides rigid 90-degree bend for $\frac{3}{8}$ ", $\frac{1}{2}$ ", $\frac{5}{8}$ " and $\frac{3}{4}$ " Uponor PEX tubing.

Metal Bend Support



Part No.	Part Description	Each Qty.	Pkg. Qty.	List Price/Ea.
A5110375	$\frac{3}{8}$ " Metal Bend Support	-	50	\$2.95
A5110500	$\frac{1}{2}$ " Metal Bend Support	-	50	\$2.85
A5110625	$\frac{5}{8}$ " Metal Bend Support	-	50	\$4.10
A5110750	$\frac{3}{4}$ " Metal Bend Support	-	25	\$5.30

PVC Bend Support provides rigid 90-degree bend and sleeve for $\frac{3}{8}$ ", $\frac{1}{2}$ ", $\frac{5}{8}$ ", $\frac{3}{4}$ " and 1" Uponor PEX tubing runs exiting a concrete slab.

PVC Bend Support

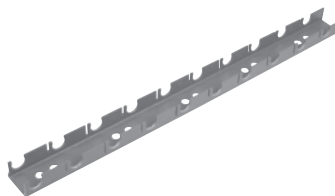


Part No.	Part Description	Each Qty.	Pkg. Qty.	List Price/Ea.
A5500500	$\frac{3}{4}$ " PVC Elbow for $\frac{3}{8}$ " and $\frac{1}{2}$ " PEX Bend Support	-	25	\$1.95
A5500625	1" PVC Elbow for $\frac{5}{8}$ " PEX Bend Support	-	25	\$3.10
A5500750	1 $\frac{1}{4}$ " PVC Elbow for $\frac{3}{4}$ " PEX Bend Support	-	20	\$5.75
A5501000	1 $\frac{1}{2}$ " PVC Elbow for 1" PEX Bend Support	-	25	\$6.35

Uponor Radiant Heating and Cooling Systems

Fasteners and Fastener Tools

PEX Rail



Plastic PEX Rail secures Uponor PEX tubing products to metal and wood-support structures.

Note: Suitable fastening hardware is required (not included).

Part No.	Part Description	Each Qty.	Pkg. Qty.	List Price/Ea.
A5700500	1/2" PEX Rail, 6.5 ft.	1	16	\$8.90
A5700625	5/8" PEX Rail, 6.5 ft.	1	16	\$11.85
A5700750	3/4" PEX Rail, 6.5 ft.	1	16	\$15.75

PEX Clip

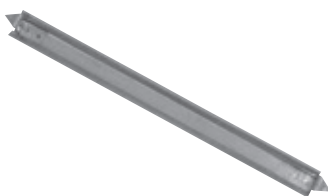


The PEX Clip provides excellent holding power and can attach together laterally for tight installations. The PEX Clip is attached under the wood subfloor for joist heating applications. The clip prevents the tubing from coming in direct contact with the subfloor, eliminating the possibility of creating uncomfortable hot spots on the floor above. Drywall screws are commonly used to secure the clips to the wood subfloor.

Note: Select a screw length so it does not penetrate entirely through the wood subfloor once installed.

Part No.	Part Description	Each Qty.	Pkg. Qty.	List Price/Ea.
F7060375	3/8" PEX Clip, 100/box	1	-	\$77.85
F7051258	1/2" PEX Clip, 100/box	1	-	\$77.85

Joist Heating Hanger



Metal Joist Heating Hanger provides support structure for tubing in joist heating applications. Use fixing wire (A7031000) or nylon zip ties to secure Uponor PEX tubing to Joist Heating Hanger. The hangers expand from 12 to 19 inches.

Part No.	Part Description	Each Qty.	Pkg. Qty.	List Price/Ea.
◀ A5600001	Joist Heating Hanger, 50/box	1	-	\$97.45

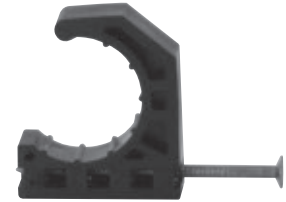
◀ Discontinued item; available while quantities last. Please contact Uponor Customer Service for availability. All sales are final.

Uponor Radiant Heating and Cooling Systems

Tube Talon secures $\frac{3}{8}$ ", $\frac{1}{2}$ ", $\frac{5}{8}$ ", $\frac{3}{4}$ " and 1" Uponor PEX tubing products. Fasteners are included.

Part No.	Part Description	Each Qty.	Case Qty.	List Price/Ea.
F7050375	Tube Talon ($\frac{3}{8}$ " PEX), 100/bag	1	10	\$23.65
F7050750	Tube Talon ($\frac{1}{2}$ ", $\frac{5}{8}$ ", $\frac{3}{4}$ " PEX), 100/bag	1	10	\$20.65
F7051000	Tube Talon (1" PEX), 50/bag	1	10	\$25.60

Tube Talon



Manually secure galvanized U-shaped Tube Fastener to $\frac{3}{8}$ ", $\frac{1}{2}$ ", and $\frac{5}{8}$ " Uponor PEX tubing to wood subflooring.

Part No.	Part Description	Each Qty.	Pkg. Qty.	List Price/Ea.
A7040250	U-shaped Tube Fastener, 250/box	1	-	\$35.65

U-shaped Tube Fastener



Use Fixing Wire Twister with fixing wire (A7031000).

Part No.	Part Description	Each Qty.	Pkg. Qty.	List Price/Ea.
E6090005	Fixing Wire Twister	1	-	\$6.35

Fixing Wire Twister



Use Ratchet-style Fixing Wire Twister with fixing wire (A7031000).

Part No.	Part Description	Each Qty.	Pkg. Qty.	List Price/Ea.
E6091700	Ratchet-style Fixing Wire Twister	1	-	\$72.50

Ratchet-style Fixing Wire Twister



Uponor Radiant Heating and Cooling Systems

Fixing Wire



Specially formulated 6-inch galvanized steel alloy tie secures Uponor PEX tubing products to wire mesh or rebar. Use with fixing wire twistlers.

Part No.	Part Description	Each Qty.	Pkg. Qty.	List Price/Ea.
A7031000	Fixing Wire, 1,000/bundle	1	5	\$29.05

Steel Plate Protector



Steel Plate Protector protects tubing from possible damage by drywall, trim screws or nails, etc.

Part No.	Part Description	Each Qty.	Pkg. Qty.	List Price/Ea.
F5700002	Steel Plate Protector, 100/box	1	-	\$28.10

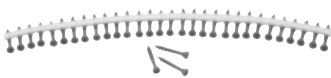
Quik Trak Installation Tool Kit



The Quik Trak Installation Tool Kit is an auto-feed screw system that features labor-saving speed for Quik Trak installations. The easy-to-use screw gun is lightweight and the extension arm reduces fatigue. The kit includes 120VAC screw gun with vertical extension arm, square head drive screw bits, bit retrieval tool and hard-sided case.

Part No.	Part Description	Each Qty.	Pkg. Qty.	List Price/Ea.
E6050000	Quik Trak Installation Tool Kit	1	-	\$1,096.00
E6050005	Quik Trak Bits and Tool (set of 3 square drive bits and 1 tool)	1	-	\$28.70

Quik Trak Screws



The 1¼" screws are designed specifically for Quik Trak installations using ¾" subfloors.

Part No.	Part Description	Each Qty.	Pkg. Qty.	List Price/Ea.
E6051250	Quik Trak Screws (1¼"), 2,500/box	1	-	\$193.40

Uponor Radiant Heating and Cooling Systems

Quik Trak Sealant is 100% silicone and provides good thermal transfer. Use to adhere $\frac{5}{16}$ " Wirsbo hePEX plus tubing in the Quik Trak groove.

Quik Trak Sealant



Part No.	Part Description	Each Qty.	Pkg. Qty.	List Price/Ea.
E6050010	Quik Trak Sealant, 10.3 fluid oz. (300 ml)	-	24	\$15.55

Pneumatic Stapler Kit fires $\frac{5}{8}$ " through $1\frac{1}{4}$ " staples with a 1-inch crown. Kit includes stapler, walking stick and conventional nose piece for attaching $\frac{1}{2}$ " and $\frac{5}{8}$ " Uponor PEX to subfloors.

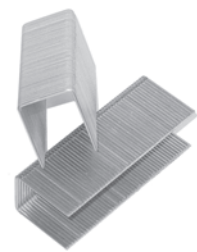
Pneumatic Stapler Kit



Part No.	Part Description	Each Qty.	Pkg. Qty.	List Price/Ea.
E6021638	Pneumatic Stapler Kit	1	-	\$1,526.10

Metal Staples are available in $\frac{5}{8}$ " and $1\frac{1}{4}$ " lengths with a 1-inch crown. Use $\frac{5}{8}$ " staple to secure aluminum plates to furring strips or subfloors. Use $1\frac{1}{4}$ " staples in staple-down installations to secure $\frac{3}{8}$ ", $\frac{1}{2}$ " and $\frac{5}{8}$ " Uponor PEX to wood subfloors.

Metal Staples



Note: Uponor does not recommend this use of staples for joist heating applications.

Part No.	Part Description	Each Qty.	Pkg. Qty.	List Price/Ea.
A7010625	$\frac{5}{8}$ " Metal staples, 10,000/box	1	-	\$139.60
A7011250	$1\frac{1}{4}$ " Metal Staples, 10,000/box	1	-	\$165.50

◀ Discontinued item; available while quantities last. Please contact Uponor Customer Service for availability. All sales are final.

Uponor Radiant Heating and Cooling Systems

Manual Foam Stapler



Use Manual Foam Stapler with Plastic Foam Staples (A7015050, A7015075) to attach $\frac{3}{8}$ ", $\frac{1}{2}$ " and $\frac{5}{8}$ " Uponor PEX to rigid foam insulation.

Part No.	Part Description	Each Qty.	Pkg. Qty.	List Price/Ea.
E6025075	Manual Foam Stapler	1	-	\$810.65

Plastic Foam Staples



Use Plastic Foam Staples with Manual Foam Stapler (E6025075) to secure $\frac{3}{8}$ ", $\frac{1}{2}$ " and $\frac{5}{8}$ " Uponor PEX to rigid foam insulation.

Note: Use 1½" Foam Staples (A7015050) for 1-inch foam and 2½" Foam Staples (A7015075) for 1½-inch or thicker foam.

Part No.	Part Description	Each Qty.	Pkg. Qty.	List Price/Ea.
A7015050	1½" Plastic Foam Staples, 300/box	1	-	\$90.00
A7015075	2½" Plastic Foam Staples, 300/box	1	-	\$102.35

Uponor Radiant Heating and Cooling Systems

Tube Uncoilers

The Select Uncoiler facilitates the uncoiling of $\frac{5}{16}$ " to 1" Uponor PEX or up to $\frac{5}{8}$ " tubing, which simplifies installation and reduces labor. The robust construction features an adjustable reel to allow for either horizontal or vertical position uncoiling. The durable wheels make for easy portability, and the uncoiler is equipped with a tubing-feed eyelet.

Note: Due to large coil inside diameters, the Select Uncoiler cannot support 1,000-foot coils of $\frac{5}{8}$ " and larger MLC tubing.

Part No.	Part Description	Each Qty.	Pkg. Qty.	List Price/Ea.
E6062000	Select Uncoiler	1	-	\$1,585.20

Select Uncoiler



The Compact Select Uncoiler facilitates the uncoiling of $\frac{5}{16}$ " to 1" Wirsbo AQUAPEX or MLC tubing. The entire 65-pound unit conveniently collapses into its own heavy-duty, compact carrying case, allowing for quick and efficient transport of the uncoiler as well as easy storage when not in use.

Part No.	Part Description	Each Qty.	Pkg. Qty.	List Price/Ea.
E6063000	Compact Select Uncoiler	1	-	\$1,014.95

Compact Select Uncoiler



The Tube Uncoiler facilitates the uncoiling of $\frac{5}{16}$ " to 1" Wirsbo AQUAPEX tubing, which simplifies installation and reduces labor. Weighted arms hold tubing in place while uncoiling. Eyelet keeps tubing from tangling. Base is collapsible. No additional hardware necessary for attaching arms. Easy to assemble.

Note: Upon assembly, install the guide pin on the swivel arm in order to keep the arm in place.

Part No.	Part Description	Each Qty.	Pkg. Qty.	List Price/Ea.
E6061000	Tube Uncoiler	1	-	\$451.10

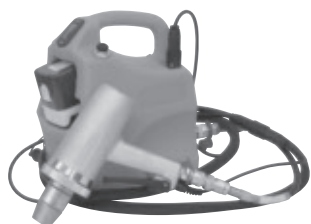
Tube Uncoiler



Uponor Radiant Heating and Cooling Systems

ProPEX Tools and Accessories

ProPEX 200 Battery Expander Tool Kit and Accessories



The ProPEX 200 Battery Expander Tool is an electro-hydraulic tool with microprocessor-based intelligence that makes fast, easy connections to $\frac{3}{8}$ " through 2" Wirsbo AQUAPEX tubing. The tool kit includes a $1\frac{1}{2}$ " pistol for making connections to $\frac{3}{8}$ " through $1\frac{1}{2}$ " tubing, a 2" pistol with a 2" H-series expander head for making connections to 2" tubing.

The tool uses both H-series ProPEX Expander Heads as well as the regular ProPEX Expander Heads.

Note: ProPEX Expander Heads for $\frac{3}{8}$ " through $1\frac{1}{2}$ " tubing sold separately.

Part No.	Part Description	Each Qty.	Pkg. Qty.	List Price/Ea.
Q6262000	ProPEX 200 Battery Expander Tool Kit (Includes 2" Pistol, $1\frac{1}{2}$ " Pistol, 2" H-series Expander Head, 10-foot Hydraulic Hose, Hydraulic Pump, battery charger, two batteries, expander head lubricant, operation manual and roller case)	1	-	\$10,000.00
Q6260200	ProPEX 200 Battery, replacement part	1	-	\$526.75
Q6260700	ProPEX 200 Battery Charger, replacement part	1	-	\$450.00
Q6260002	ProPEX 200 Roller Case, replacement part	1	-	\$670.00

ProPEX 150 Battery Expander Tool Kit and Accessories



The electro-mechanical ProPEX 150 Battery Expander Tool expands $\frac{3}{8}$ ", $\frac{1}{2}$ ", $\frac{5}{8}$ ", $\frac{3}{4}$ ", 1", $1\frac{1}{4}$ " and $1\frac{1}{2}$ " Uponor PEX tubing using the ProPEX connection method. This ProPEX Battery Expander Tool uses the H-series ProPEX Expander Heads up to $1\frac{1}{2}$ " as well as the standard ProPEX Expander Heads. The standard kit includes the Battery Expander Tool, two batteries, one battery charger, lubricant for expander heads and a heavy-duty carrying case. The deluxe kit includes all the components of the standard kit plus the ProPEX Auto Rotation Adapter and $\frac{1}{2}$ ", $\frac{3}{4}$ " and 1" regular ProPEX Expander Heads.

Note: ProPEX Expander Heads sold separately.

NEW

Part No.	Part Description	Each Qty.	Pkg. Qty.	List Price/Ea.
Q6261500	ProPEX 150 Battery Expander Tool Kit	1	-	\$1,648.25
Q6261550	ProPEX 150 Deluxe Battery Expander Tool Kit	1	-	\$2,295.00
Q6260100	ProPEX 150 Battery, replacement part	1	-	\$235.90
Q6260600	ProPEX 150 Battery Charger, replacement part	1	-	\$146.50

ProPEX Auto Rotation Adapter



NEW

Designed to use with all standard expander tools and standard expander heads ($\frac{3}{8}$ " to 1"), the ProPEX Auto Rotation Adapter eliminates the need to rotate the tubing when making ProPEX connections.

Note: The ProPEX Auto Rotation Adapter is not compatible with the ProPEX 200 Battery Expander Tool or H-series Expander Heads.

Part No.	Part Description	Each Qty.	Pkg. Qty.	List Price/Ea.
Q6323810	ProPEX Auto Rotation Adapter	1	-	\$328.00

Uponor Radiant Heating and Cooling Systems

ProPEX Air (pneumatic) Expander Tool expands $\frac{3}{8}$ ", $\frac{1}{2}$ ", $\frac{3}{4}$ " and 1" Uponor PEX tubing products using the ProPEX connection method. Kit includes $\frac{1}{2}$ " head, lubricant, carrying case and 4 oz. tube of pneumatic oil.

Note: The $\frac{3}{8}$ ", $\frac{3}{4}$ " and 1" Expander Heads are sold separately.

Part No.	Part Description	Each Qty.	Pkg. Qty.	List Price/Ea.
Q6301000	ProPEX Air Expander Tool Kit	1	-	\$1,223.35
Q6301010	ProPEX Air Expander Oil, 4 oz. bottle, replacement part	1	-	\$3.30

ProPEX Air Expander Tool



The ProPEX Hand (Manual) Expander Tool Kit includes $\frac{1}{2}$ ", $\frac{3}{4}$ " and 1" heads, tool lubricant and a sturdy carrying case.

Note: The $\frac{3}{8}$ " Expander Head is sold separately.

Part No.	Part Description	Each Qty.	Pkg. Qty.	List Price/Ea.
Q6295075	ProPEX Hand Expander Tool Kit	1	-	\$643.85

ProPEX Hand Expander Tool Kit



The ProPEX Hand (Manual) Expander Tool features rugged, tool-hardened heads and an ergonomic handle design for use on $\frac{3}{8}$ " to 1" ProPEX connections.

Part No.	Part Description	Each Qty.	Pkg. Qty.	List Price/Ea.
Q6275075	ProPEX Hand Expander Tool (only with case)	1	-	\$276.85

ProPEX Hand Expander Tool



Uponor Radiant Heating and Cooling Systems

ProPEX Expander Head



Standard ProPEX Expander Heads are used on all ProPEX Expander Tools.

Note: The ProPEX Expander Heads are not compatible with the APR Blunt Expander Tool.

Part No.	Part Description	Each Qty.	Pkg. Qty.	List Price/Ea.
Q6310375	3/8" ProPEX Expander Head	1	-	\$141.70
Q6310500	1/2" ProPEX Expander Head	1	-	\$128.80
Q6310625	5/8" ProPEX Expander Head	1	-	\$128.80
Q6310750	3/4" ProPEX Expander Head	1	-	\$128.80
Q6311000	1" ProPEX Expander Head	1	-	\$128.80

H-series ProPEX Expander Head



The H-series ProPEX Expander Heads are used only with the ProPEX 150 Battery Expander Tool (Q6261500) and ProPEX 200 Battery Expander Tool (Q6262000).

H-series ProPEX Expander Heads require less number of expansions than the regular ProPEX Expander Heads. Heads are identified with an "H" stamp on head.

Note: The H-series ProPEX Expander Heads are not compatible with the ProPEX Hand Expander, ProPEX Air Expander, APR Blunt Expander Tools or the Auto Rotation Adapter.

Part No.	Part Description	Each Qty.	Pkg. Qty.	List Price/Ea.
Q6380750	3/4" H-series ProPEX Expander Head	1	-	\$154.55
Q6381000	1" H-series ProPEX Expander Head	1	-	\$154.55
Q6381250	1 1/4" H-series ProPEX Expander Head	1	-	\$161.00
Q6381500	1 1/2" H-series ProPEX Expander Head	1	-	\$167.40
Q6282000	2" H-series ProPEX Expander Head	1	-	\$542.85

Graphite Grease



Graphite Grease lubricates ProPEX Expander Tool cones.

Part No.	Part Description	Each Qty.	Pkg. Qty.	List Price/Ea.
Q5590028	Graphite Grease for ProPEX Tools, spare part	1	-	\$40.20

Uponor Radiant Heating and Cooling Systems

MLC Press Fitting Tools and Accessories

The Mini-Press Battery Tool is an electro-hydraulic press fitting tool that makes fast, easy connections to ½" through 1" Uponor MLC tubing. The tool kit with jaws includes one battery, one charger and press jaws for ½", ⅝", ¾" and 1" tubing. The tool kit without jaws includes two batteries and one charger.

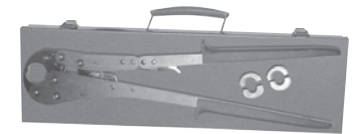
Mini-Press Battery Tool and Accessories



Part No.	Part Description	Each Qty.	Pkg. Qty.	List Price/Ea.
D6260000	Mini-Press Battery Tool Kit (No Jaws)	1	-	\$2,401.90
D6261632	Mini-Press Battery Tool Kit (With Jaws)	1	-	\$3,606.75
D6260001	Mini-Press Tool Battery 9.6V, replacement part	1	-	\$236.25
D6260002	Mini-Press Tool Battery Charger, replacement part	1	-	\$294.00
D6260500	½" Press Jaw for Mini-Press Battery Tool	1	-	\$236.25
D6260625	⅝" Press Jaw for Mini-Press Battery Tool	1	-	\$236.25
D6260750	¾" Press Jaw for Mini-Press Battery Tool	1	-	\$245.70
D6261000	1" Press Jaw for Mini-Press Battery Tool	1	-	\$245.70

MLC Press Fitting Manual Tool makes ½" and ⅝" MLC Press fittings. Kit includes manual press tool, ½" and ⅝" inserts and a carrying case.

MLC Press Fitting Manual Tool



Part No.	Part Description	Each Qty.	Pkg. Qty.	List Price/Ea.
D6275063	MLC Press Fitting Manual Tool Kit	1	-	\$845.00
D6270500	½" Replacement Insert for MLC Press Fitting Manual Press Tool	1	-	\$208.00
D6270625	⅝" Replacement Insert for MLC Press Fitting Manual Press Tool	1	-	\$208.00

The MLC Tubing T-handle Chamfering Tool bevels the ends of ½", ⅝", ¾" and 1" MLC tubing in preparation for making a fitting connection. The t-handle is removable to use the tool with a drill for multiple chamfering.

MLC Tubing T-handle Chamfering Tool



Part No.	Part Description	Each Qty.	Pkg. Qty.	List Price/Ea.
D6100500	½" MLC Tubing T-handle Chamfering Tool	1	-	\$50.60
D6100625	⅝" MLC Tubing T-handle Chamfering Tool	1	-	\$50.60
D6100750	¾" MLC Tubing T-handle Chamfering Tool	1	-	\$53.85
D6101000	1" MLC Tubing T-handle Chamfering Tool	1	-	\$88.90

Uponor Radiant Heating and Cooling Systems

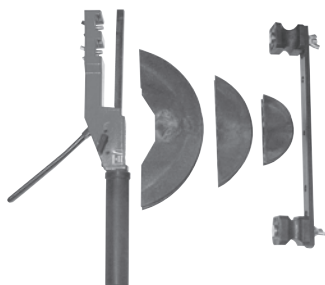
MLC Tubing Three-way Chamfering Tool



The MLC Tubing Three-way Chamfering Tool bevels the end of ½", ⅝" and ¾" MLC tubing in preparation for making a fitting connection. The side of the tool marks the tubing for the correct insert depth.

Part No.	Part Description	Each Qty.	Pkg. Qty.	List Price/Ea.
D6105063	MLC Tubing Three-way Chamfering Tool, ½", ⅝" and ¾"	1	-	\$55.60

MLC Tubing Bending Tool



The MLC Tubing Bending Tool allows for more precise, tighter bending radius than manual bends.

Part No.	Part Description	Each Qty.	Pkg. Qty.	List Price/Ea.
D6165010	MLC Tubing Bending Tool (up to 1" tubing)	1	-	\$686.80

MLC Tubing Bending Spring



The MLC Tubing Bending Spring allows for tighter bending radius than manual bends.

Part No.	Part Description	Each Qty.	Pkg. Qty.	List Price/Ea.
◀ E6160750	¾" MLC Tubing Bending Spring	1	-	\$19.60
◀ E6161000	1" MLC Tubing Bending Spring	1	-	\$45.55

◀ Discontinued item; available while quantities last. Please contact Uponor Customer Service for availability. All sales are final.

Uponor Radiant Heating and Cooling Systems

Tools

Service Wrench features a lightweight, compact design. Use the 1 $\frac{3}{16}$ " service wrench to tighten QS-style fitting assemblies to the manifolds. Use the 1 $\frac{7}{8}$ " service wrench to tighten manifold union nuts.

Part No.	Part Description	Each Qty.	Pkg. Qty.	List Price/Ea.
E6111188	1 $\frac{3}{16}$ " Service Wrench	1	-	\$49.85
E6111875	1 $\frac{7}{8}$ " Service Wrench	1	-	\$66.40
E6110046	TruFLOW Service Wrench, 46 mm	1	-	\$88.50

Service Wrench



Metal Tube Cutter cuts up to 1" PEX tubing. Plastic Tube Cutter cuts up to 1" PEX or $\frac{3}{4}$ " MLC tubing.

Part No.	Part Description	Each Qty.	Pkg. Qty.	List Price/Ea.
E6081125	Tube Cutter (metal) for up to 1" PEX	1	-	\$35.50
E6081140	Tube Cutter Replacement Blade for E6081125, spare part	1	-	\$12.95
E6081128	Tube Cutter (plastic) for up to 1" PEX ($\frac{3}{4}$ " MLC Tubing)	1	-	\$28.50
E6081143	Tube Cutter Replacement Blade for E6081128, spare part	1	-	\$20.65

Tube Cutter



Ratchet-style Tube Cutter cuts up to 1" PEX and MLC. Ratchet-style Large Dimension Tube Cutter cuts 1" to 2" PEX and 1" MLC.

Part No.	Part Description	Each Qty.	Pkg. Qty.	List Price/Ea.
E6081500	Ratchet-style Tube Cutter for up to 1" PEX and MLC Tubing	1	-	\$35.40
E6081544	Tube Cutter Replacement Blade for E6081500, spare part	1	-	\$16.10
E6082000	Ratchet-style Large Dimension Tube Cutter for 1" to 2" PEX and 1" MLC Tubing	1	-	\$254.40

Ratchet-style Tube Cutter

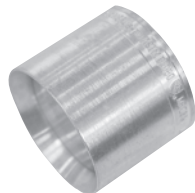


◀ Discontinued item; available while quantities last. Please contact Uponor Customer Service for availability. All sales are final.

Uponor Radiant Heating and Cooling Systems

APR Fittings

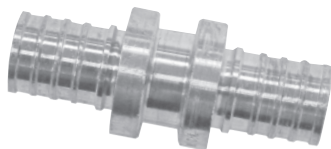
APR Brass Sleeve



The APR Brass Sleeve slides over the end of the expanded Uponor PEX tubing and APR fitting to form the completed fitting. The APR Ratchet Tool is used to slide the sleeve over the tubing and fitting.

Part No.	Part Description	Pkg. Qty.	Case Qty.	List Price/Ea.
◀ K4680500	APR Brass Sleeve, 1/2"	50	250	\$0.80
◀ K4680750	APR Brass Sleeve, 3/4"	50	250	\$1.30
◀ K4681000	APR Brass Sleeve, 1"	10	100	\$2.15
◀ K4681250	APR DZR Brass Sleeve, 1 1/4"	10	100	\$5.65

APR Brass Coupling



APR Brass Coupling makes PEX-to-PEX connections for Uponor PEX tubing.

Note: APR Ratchet Tool and APR Blunt Expander Tool are required. APR Brass Sleeves sold separately.

Part No.	Part Description	Pkg. Qty.	Case Qty.	List Price/Ea.
◀ K4545050	APR Brass Coupling, 1/2" PEX x 1/2" PEX	25	100	\$2.70
◀ K4545075	APR Brass Coupling, 1/2" PEX x 3/4" PEX	25	100	\$8.15
◀ K4547575	APR Brass Coupling, 3/4" PEX x 3/4" PEX	25	100	\$5.55
◀ K4547510	APR Brass Coupling, 3/4" PEX x 1" PEX	10	100	\$9.40
◀ K4541010	APR Brass Coupling, 1" PEX x 1" PEX	10	100	\$10.25

APR DZR Brass Coupling



APR DZR Brass Coupling makes PEX-to-PEX connections for Uponor PEX tubing. DZR Brass Fittings are safe for direct burial in soil.

Note: APR Ratchet Tool and APR Blunt Expander Tool are required. APR Brass Sleeves sold separately.

Part No.	Part Description	Ea. Qty.	Pkg. Qty.	List Price/Ea.
◀ K4541313	APR DZR Brass Coupling, 1 1/4" PEX x 1 1/4" PEX	-	10	\$22.70

◀ Discontinued item; available while quantities last. Please contact Uponor Customer Service for availability. All sales are final.

Uponor Radiant Heating and Cooling Systems

APR Brass Elbow make 90-degree PEX-to-PEX connections for Uponor PEX tubing.

Note: APR Ratchet Tool and APR Blunt Expander Tool are required. APR Brass Sleeves sold separately.

Part No.	Part Description	Pkg. Qty.	Case Qty.	List Price/Ea.
◀ K4710500	APR Brass Elbow, 1/2" PEX x 1/2" PEX	25	100	\$4.45
◀ K4710750	APR Brass Elbow, 3/4" PEX x 3/4" PEX	25	100	\$6.70
◀ K4711000	APR Brass Elbow, 1" PEX x 1" PEX	10	100	\$11.00

APR Brass Elbow



Branch size is listed last in the part description.

Note: APR Ratchet Tool and APR Blunt Expander Tool required. APR Brass Sleeves sold separately.

Part No.	Part Description	Pkg. Qty.	Case Qty.	List Price/Ea.
◀ K4705050	APR Brass Tee, 1/2" PEX x 1/2" PEX x 1/2" PEX	25	100	\$5.00
◀ K4707575	APR Brass Tee, 3/4" PEX x 3/4" PEX x 3/4" PEX	25	100	\$8.45
◀ K4701010	APR Brass Tee, 1" PEX x 1" PEX x 1" PEX	10	100	\$15.20

APR Brass Tee

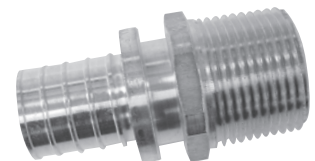


APR Brass Male Threaded Adapter transitions Uponor PEX tubing to male NPT threads.

Note: APR Ratchet Tool and APR Blunt Expander Tool are required. APR Brass Sleeves sold separately.

Part No.	Part Description	Pkg. Qty.	Case Qty.	List Price/Ea.
◀ K4525050	APR Brass Male Threaded Adapter, 1/2" PEX x 1/2" NPT	25	100	\$3.55
◀ K4525075	APR Brass Male Threaded Adapter, 1/2" PEX x 3/4" NPT	25	100	\$5.80
◀ K4527575	APR Brass Male Threaded Adapter, 3/4" PEX x 3/4" NPT	25	100	\$6.65
◀ K4527510	APR Brass Male Threaded Adapter, 3/4" PEX x 1" NPT	10	100	\$8.40
◀ K4521010	APR Brass Male Threaded Adapter, 1" PEX x 1" NPT	10	100	\$9.30

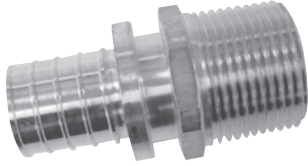
APR Brass Male Threaded Adapter



◀ Discontinued item; available while quantities last. Please contact Uponor Customer Service for availability. All sales are final.

Uponor Radiant Heating and Cooling Systems

APR DZR Brass Male Threaded Adapter

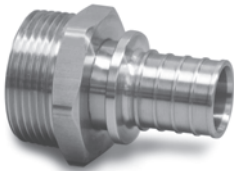


APR DZR Brass Male Threaded Adapter transitions Uponor PEX tubing to male NPT thread. DZR Brass Fittings are safe for direct burial in soil.

Note: APR Ratchet Tool and APR Blunt Expander Tool are required. APR Brass Sleeves sold separately.

Part No.	Part Description	Each Qty.	Pkg. Qty.	List Price/Ea.
◀ K4521313	APR DZR Brass Male Threaded Adapter, 1 1/4" PEX x 1 1/4" NPT	-	10	\$20.95

APR Manifold Adapter

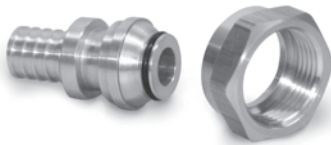


APR Adapter for brass manifold transitions from the R32 manifold union nut to 3/4" and 1" Uponor PEX tubing.

Note: APR Ratchet Tool and APR Blunt Expander Tool are required. APR Brass Sleeves sold separately. This fitting is not compatible with the TruFLOW Sr.

Part No.	Part Description	Each Qty.	Pkg. Qty.	List Price/Ea.
◀ K4143275	APR Manifold Straight Adapter, R32 x 3/4" APR	-	10	\$23.85
◀ K4143210	APR Manifold Straight Adapter, R32 x 1" APR	-	10	\$23.85

APR Fitting Assembly

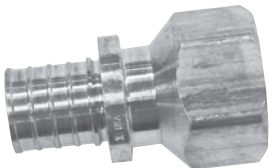


APR Fitting Assembly with APR insert connects 1/2" and 3/4" Uponor PEX tubing to the brass manifolds. Sold as a two-piece assembly, it includes a ProPEX insert and R20 swivel nut.

Note: APR Ratchet Tool and APR Blunt Expander Tool are required. APR Brass Sleeves sold separately. This fitting is not compatible with the TruFLOW Sr.

Part No.	Part Description	Each Qty.	Pkg. Qty.	List Price/Ea.
◀ K4020500	1/2" APR Fitting Assembly (R20 thread)	-	10	\$10.00
◀ K4020750	3/4" APR Fitting Assembly (R20 thread)	-	10	\$12.75

APR Brass Female Threaded Adapter



APR Brass Female Threaded Adapter transitions Uponor PEX tubing to female NPT threads.

Note: APR Ratchet Tool and APR Blunt Expander Tool required. APR Brass Sleeves sold separately.

Part No.	Part Description	Pkg. Qty.	Case Qty.	List Price/Ea.
◀ K4575050	APR Brass Female Threaded Adapter, 1/2" PEX x 1/2" NPT	25	100	\$5.80
◀ K4575075	APR Brass Female Threaded Adapter, 1/2" PEX x 3/4" NPT	25	100	\$6.50
◀ K4577575	APR Brass Female Threaded Adapter, 3/4" PEX x 3/4" NPT	25	100	\$6.95
◀ K4577510	APR Brass Female Threaded Adapter, 3/4" PEX x 1" NPT	10	100	\$15.25
◀ K4571010	APR Brass Female Threaded Adapter, 1" PEX x 1" NPT	10	100	\$13.95

◀ Discontinued item; available while quantities last. Please contact Uponor Customer Service for availability. All sales are final.

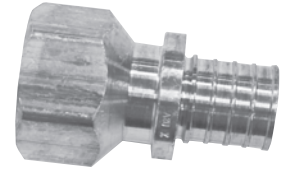
Uponor Radiant Heating and Cooling Systems

APR DZR Brass Female Threaded Adapter transitions Uponor PEX tubing to female NPT thread. DZR Brass Fittings are safe for direct burial in soil.

Note: APR Ratchet Tool and APR Blunt Expander Tool required. APR Brass Sleeves sold separately.

Part No.	Part Description	Each Qty.	Pkg. Qty.	List Price/Ea.
K4571313	APR DZR Brass Female Threaded Adapter, 1 1/4" PEX x 1 1/4" NPT	-	10	\$34.30

APR DZR Brass Female Threaded Adapter

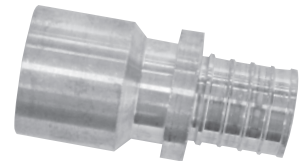


APR Brass Sweat Adapter transitions Uponor PEX tubing to copper pipe.

Note: APR Ratchet Tool and APR Blunt Expander Tool are required. APR Brass Sleeves sold separately.

Part No.	Part Description	Pkg. Qty.	Case Qty.	List Price/Ea.
K4515050	APR Brass Sweat Adapter, 1/2" PEX x 1/2" Copper	25	100	\$2.40
K4515075	APR Brass Sweat Adapter, 1/2" PEX x 3/4" Copper	25	100	\$4.00
K4517550	APR Brass Sweat Adapter, 3/4" PEX x 1/2" Copper	25	100	\$4.00
K4517575	APR Brass Sweat Adapter, 3/4" PEX x 3/4" Copper	25	100	\$5.10
K4517510	APR Brass Sweat Adapter, 3/4" PEX x 1" Copper	10	100	\$7.30
K4511010	APR Brass Sweat Adapter, 1" PEX x 1" Copper	10	100	\$8.90

APR Brass Sweat Adapter

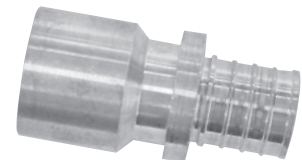


APR DZR Brass Sweat Adapter transitions Uponor PEX tubing to copper pipe. DZR Brass Fittings are safe for direct burial in soil.

Note: APR Ratchet Tool and APR Blunt Expander Tool are required. APR Brass Sleeves sold separately.

Part No.	Part Description	Each Qty.	Pkg. Qty.	List Price/Ea.
K4511313	APR DZR Brass Sweat Adapter, 1 1/4" PEX x 1 1/4" Copper	-	10	\$16.80

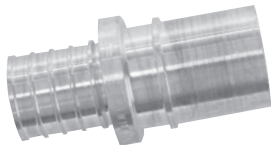
APR DZR Brass Sweat Adapter



◀ Discontinued item; available while quantities last. Please contact Uponor Customer Service for availability. All sales are final.

Uponor Radiant Heating and Cooling Systems

APR Brass Fitting Adapter



APR Brass Fitting Adapter transitions Uponor PEX tubing to copper fittings.

Note: APR Ratchet Tool and APR Blunt Expander Tool are required. APR Brass Sleeves sold separately.

Part No.	Part Description	Pkg. Qty.	Case Qty.	List Price/Ea.
◀ K4505050	APR Brass Fitting Adapter, 1/2" PEX x 1/2" Copper	25	100	\$2.30
◀ K4505075	APR Brass Fitting Adapter, 1/2" PEX x 3/4" Copper	25	100	\$4.60
◀ K4507550	APR Brass Fitting Adapter, 3/4" PEX x 1/2" Copper	25	100	\$4.75
◀ K4507575	APR Brass Fitting Adapter, 3/4" PEX x 3/4" Copper	25	100	\$5.00
◀ K4507510	APR Brass Fitting Adapter, 3/4" PEX x 1" Copper	10	100	\$5.50
◀ K4501010	APR Brass Fitting Adapter, 1" PEX x 1" Copper	10	100	\$8.60

APR DZR Brass Fitting Adapter

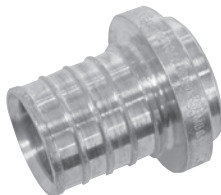


APR DZR Brass Fitting Adapter transitions Uponor PEX tubing to copper fitting connections. DZR Brass Fittings are safe for direct burial in soil.

Note: APR Ratchet Tool and APR Blunt Expander Tool are required. APR Brass Sleeves sold separately.

Part No.	Part Description	Each Qty.	Pkg. Qty.	List Price/Ea.
◀ K4501313	APR DZR Brass Fitting Adapter, 1 1/4" PEX x 1 1/4" Copper	-	10	\$16.35

APR Brass Plug



APR Brass Plug terminates the end of the Uponor PEX tubing. Install plugs for temporary or permanent usage.

Note: APR Ratchet Tool and APR Blunt Expander Tool are required. APR Brass Sleeves sold separately.

Part No.	Part Description	Pkg. Qty.	Case Qty.	List Price/Ea.
◀ K4535050	APR Brass Plug, 1/2"	25	250	\$1.85
◀ K4537575	APR Brass Plug, 3/4"	25	250	\$3.25
◀ K4531010	APR Brass Plug, 1"	10	250	\$8.40

◀ Discontinued item; available while quantities last. Please contact Uponor Customer Service for availability. All sales are final.

Uponor Radiant Heating and Cooling Systems

APR Tools and Accessories

This Tool Kit contains the Heavy-duty APR Ratchet Tool, 1/2", 3/4" and 1" jaw sets and a durable carrying case. The Heavy-duty APR Ratchet Tool pulls the APR Brass Sleeve over Uponor PEX tubing and APR fitting to complete the connection. This is a required component of the APR fitting system for 1/2" through 1 1/4" Uponor PEX tubing.

Note: The 1 1/4" jaw set is sold separately.

Part No.	Part Description	Each Qty.	Pkg. Qty.	List Price/Ea.
◀ K6275010	Heavy-duty APR Ratchet Tool Kit	1	-	\$1,028.80
◀ K6270001	Heavy-duty APR Ratchet Tool only, includes case	1	-	\$610.05

Heavy-duty APR Ratchet Tool Kit



This APR Ratchet Tool Kit contains the APR Ratchet Tool, 1/2" and 3/4" jaw sets and a durable carrying case. The APR Ratchet Tool pulls the APR Brass Sleeve over Uponor PEX tubing and APR fitting to complete the connection. This is a required component of the APR fitting system for 1/2" through 3/4" Uponor PEX tubing.

Part No.	Part Description	Each Qty.	Pkg. Qty.	List Price/Ea.
◀ K6270020	APR Ratchet Tool Kit	1	-	\$769.90
◀ K6270002	APR Ratchet Tool only, includes case	1	-	\$486.85

APR Ratchet Tool Kit



APR Ratchet Tool Jaw Set is used with the Heavy-duty and regular APR Ratchet Tools. Each set consists of two jaws for the size selected.

Note: The 1" and 1 1/4" jaw sets are only compatible with the Heavy-duty APR Ratchet Tool.

Part No.	Part Description	Each Qty.	Pkg. Qty.	List Price/Ea.
◀ K6270500	APR Ratchet Tool Jaw Set (1/2")	1	-	\$147.90
◀ K6270750	APR Ratchet Tool Jaw Set (3/4")	1	-	\$160.20
◀ K6271000	Heavy-duty APR Ratchet Tool Jaw Set (1")	1	-	\$160.20
◀ K6271250	Heavy-duty APR Ratchet Tool Jaw Set (1 1/4")	1	-	\$172.55

APR Ratchet Tool Jaw Set



◀ Discontinued item; available while quantities last. Please contact Uponor Customer Service for availability. All sales are final.

Uponor Radiant Heating and Cooling Systems

APR Blunt Expander Tool



The APR Blunt Expander Tool Kit contains the APR Expander Heads for 1/2", 3/4" and 1" PEX tubing. The kit also includes the graphite lubricant for the tool and a durable carrying case for all kit components. The APR Blunt Expander Tool expands the Uponor PEX tubing in order to insert the APR fitting into the tubing. This is a required component of the APR fitting system for 1/2", 3/4", 1" and 1 1/4" Uponor PEX tubing.

Note: The APR Blunt Expander Tool and associated expander heads are not interchangeable with the ProPEX Expander Tool and its associated expander heads.

Part No.	Part Description	Each Qty.	Pkg. Qty.	List Price/Ea.
◀ K6285010	APR Blunt Expander Tool Kit	1	-	\$647.05
◀ K6280001	APR Blunt Expander Tool only, includes case	1	-	\$278.25

APR Blunt Expander Head



All Blunt Expander Heads listed below are used with the APR Blunt Expander Tool.

Note: The APR Blunt Expander Heads are not compatible with the ProPEX Expander Tools.

Part No.	Part Description	Each Qty.	Pkg. Qty.	List Price/Ea.
◀ K6280500	1/2" APR Blunt Expander Head	1	-	\$129.40
◀ K6280750	3/4" APR Blunt Expander Head	1	-	\$129.40
◀ K6281000	1" APR Blunt Expander Head	1	-	\$166.45
◀ K6281250	1 1/4" APR Blunt Expander Head	1	-	\$178.70

◀ Discontinued item; available while quantities last. Please contact Uponor Customer Service for availability. All sales are final.