

EP ProPEX Elbow

Submittal Information Component

Project Information

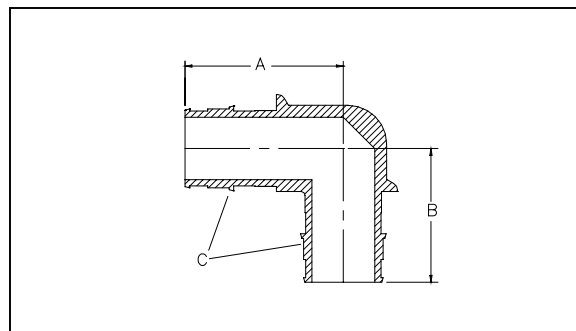
Job Name: _____	Part No. Ordered: _____
Location: _____	Quantity Ordered: _____
_____	P.O. Number: _____
Engineer: _____	Date Submitted: _____
Contractor: _____	Submitted By: _____
Mfg Rep: _____	Approved By: _____

Technical Data

Material.....UDEL® Polysulfone, 20% glass reinforced
Max Temp (no pressure).....320°F
Max Use Temp/Pressure.....210°F @ 150 psi

Product Information and Application Use

The EP ProPEX elbows are available for use in hot and cold domestic potable water systems. Fittings are also approved for use in any hydronic heating systems. Each end of the elbow is manufactured with the Wirsbo ProPEX fitting for connections to hePEX plus or AQUAPEX tubing.



Ordering Information

✓ Description	Part Number	A	B	C	D	E	Weight
[] EP ProPEX Elbow, 1/2" PEX x 1/2" PEX	Q4710500	1.147"	1.760"	1/2"	N/A	N/A	0.08 lbs
[] EP ProPEX Elbow, 3/4" PEX x 3/4" PEX	Q4710750	1.351"	1.634"	3/4"	N/A	N/A	0.13 lbs
[] EP ProPEX Elbow, 1" PEX x 1" PEX	Q4711000	1.742"	2.047"	1"	N/A	N/A	0.21 lbs

Dimensional Information

Code Approvals/Standards

ANSI/NSF 14 and 61 certified
ASTM F 877
ASTM F 1960
CAN/CSA B137.5
ICBO ER 5142
IPC
UPC
NSPC
SBCCI (PST and ESI Report No. 9661)

Installation

- Use the appropriate PEX ring for the tubing being connected.
- Refer to the Wirsbo AQUAPEX Installation Handbook for additional information.

Related Applications

AQUAPEX — Hot and Cold Potable Water Distribution
Wirsbo Radiant Floor Heating Systems
Wirsbo Permafrost Heating Systems
Wirsbo Snow & Ice Melt Systems

