

Historic Preservation Review Board Resubmission

HPA Number: 21-421

1250 U Street NW

EastBanc | Jamestown | shalom baranes associates | Landscape Architecture Bureau

November 24, 2021

Section 1 - ADJUSTED SETBACKS

NW Corner - U St NW & 13th St NW
Previous HPRB Submission



NW Corner Adjustments

View Comparison

ALTERNATE A



ALTERNATE B



NW Corner Adjustments

View Comparison

PREVIOUS HPRB SUBMISSION



ALTERNATE A



NW Corner Adjustments

View Comparison



NW Corner Adjustments

View Comparison



NW Corner Adjustments

View Comparison

PREVIOUS HPRB SUBMISSION



ALTERNATE B



NW Corner Adjustments

View Comparison



NW Corner Adjustments

View Comparison



NE Corner - U St NW & 12th St NW
Previous HPRB Submission



NE Corner Adjustments

View Comparison



NE Corner Adjustments

View Comparison



SE Wing Adjustments

View Comparison



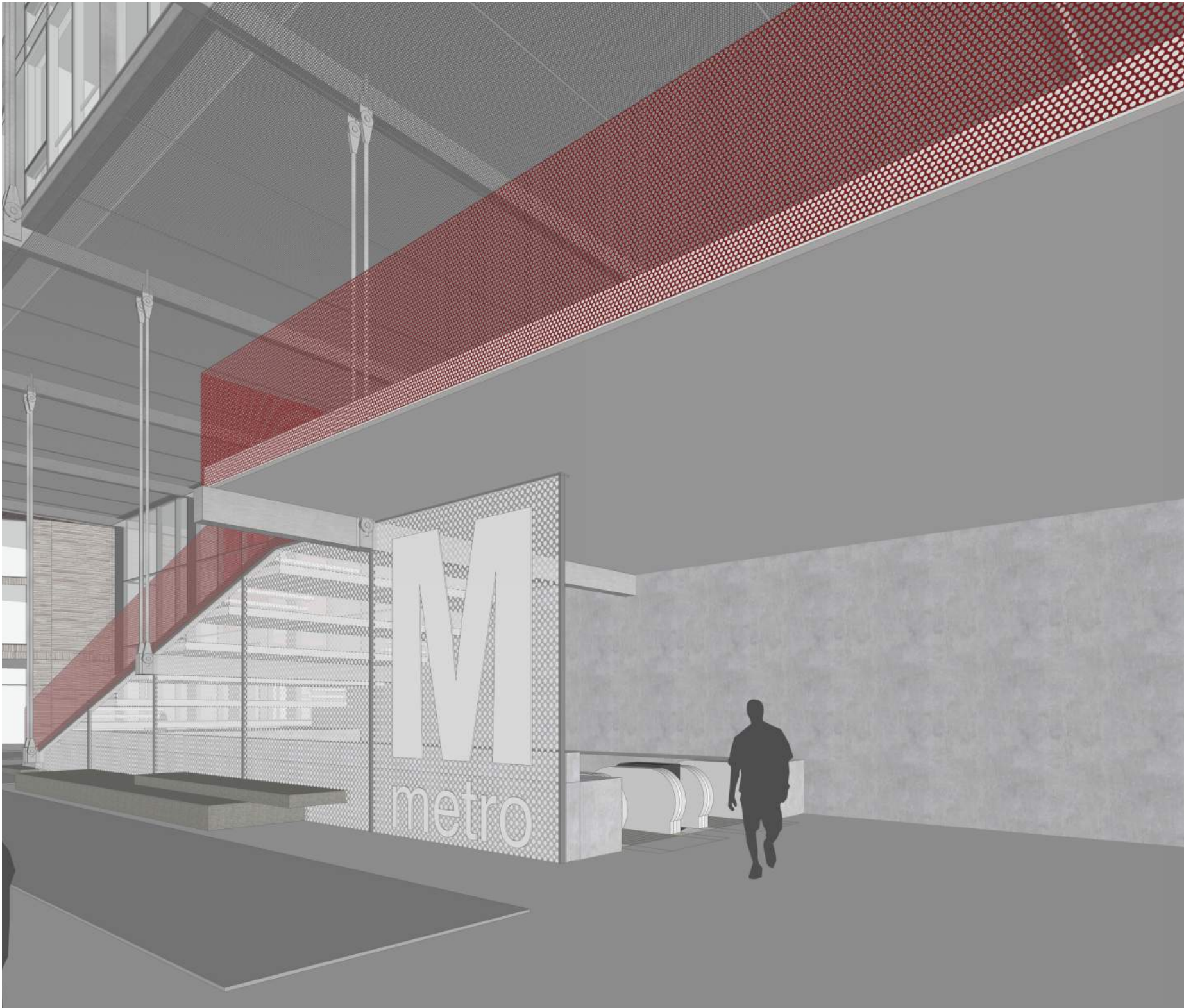
Section 2 - ENHANCED METRORAIL PRESENCE

Metro Entrance

Previous HPRB Submission

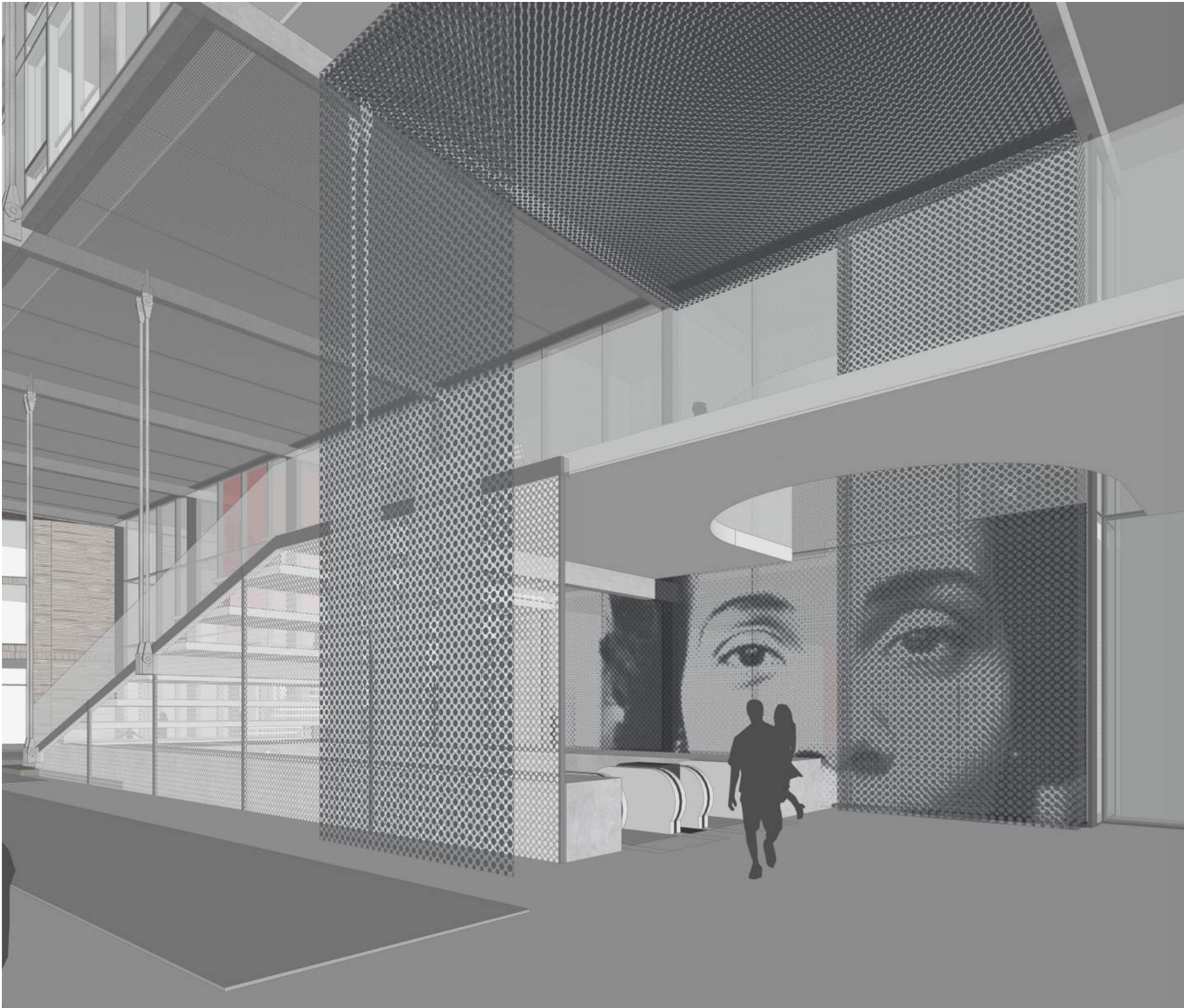


Metro Entrance
Previous HPRB Submission



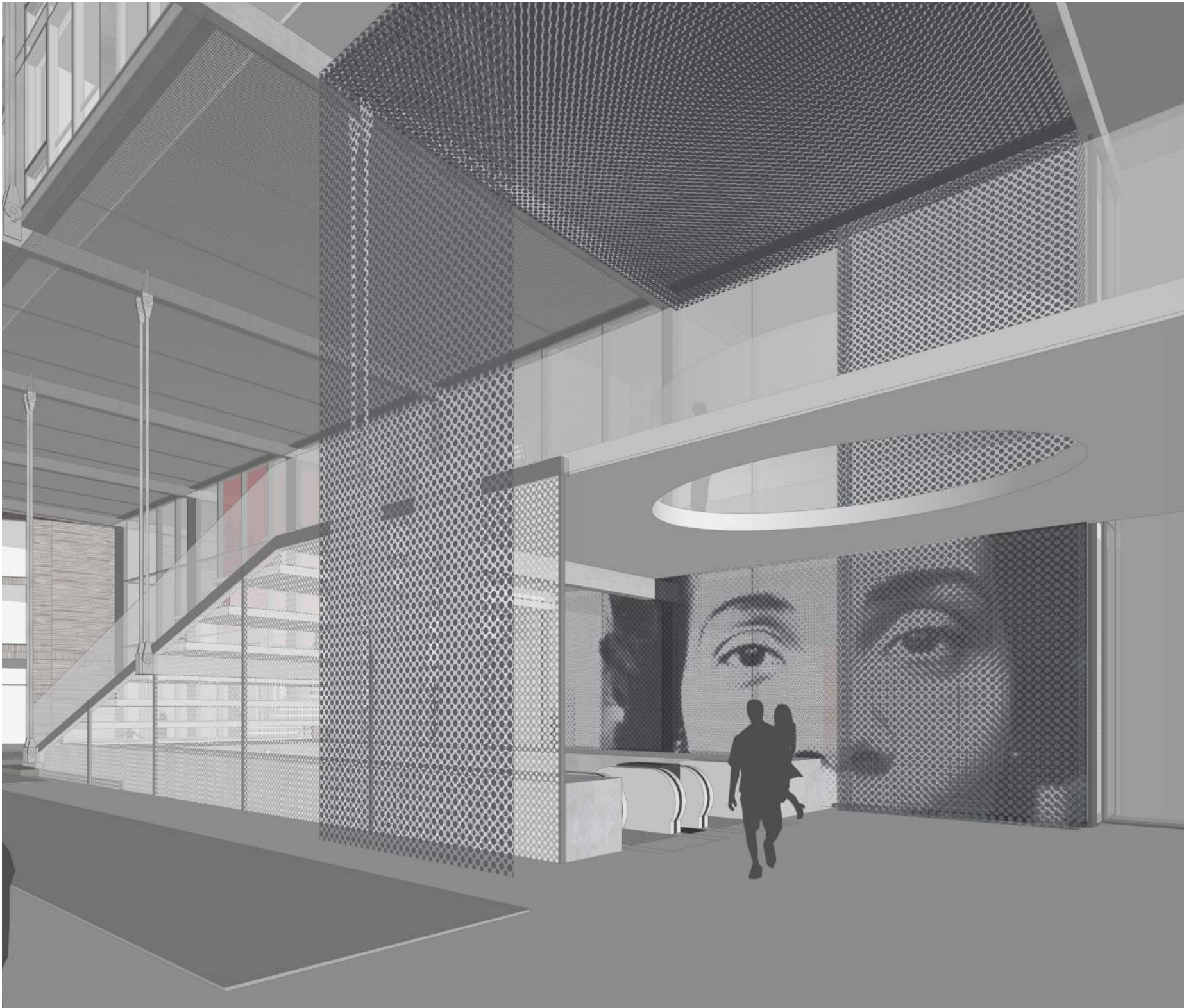
Metro Entrance

HPRB Resubmission - Option A



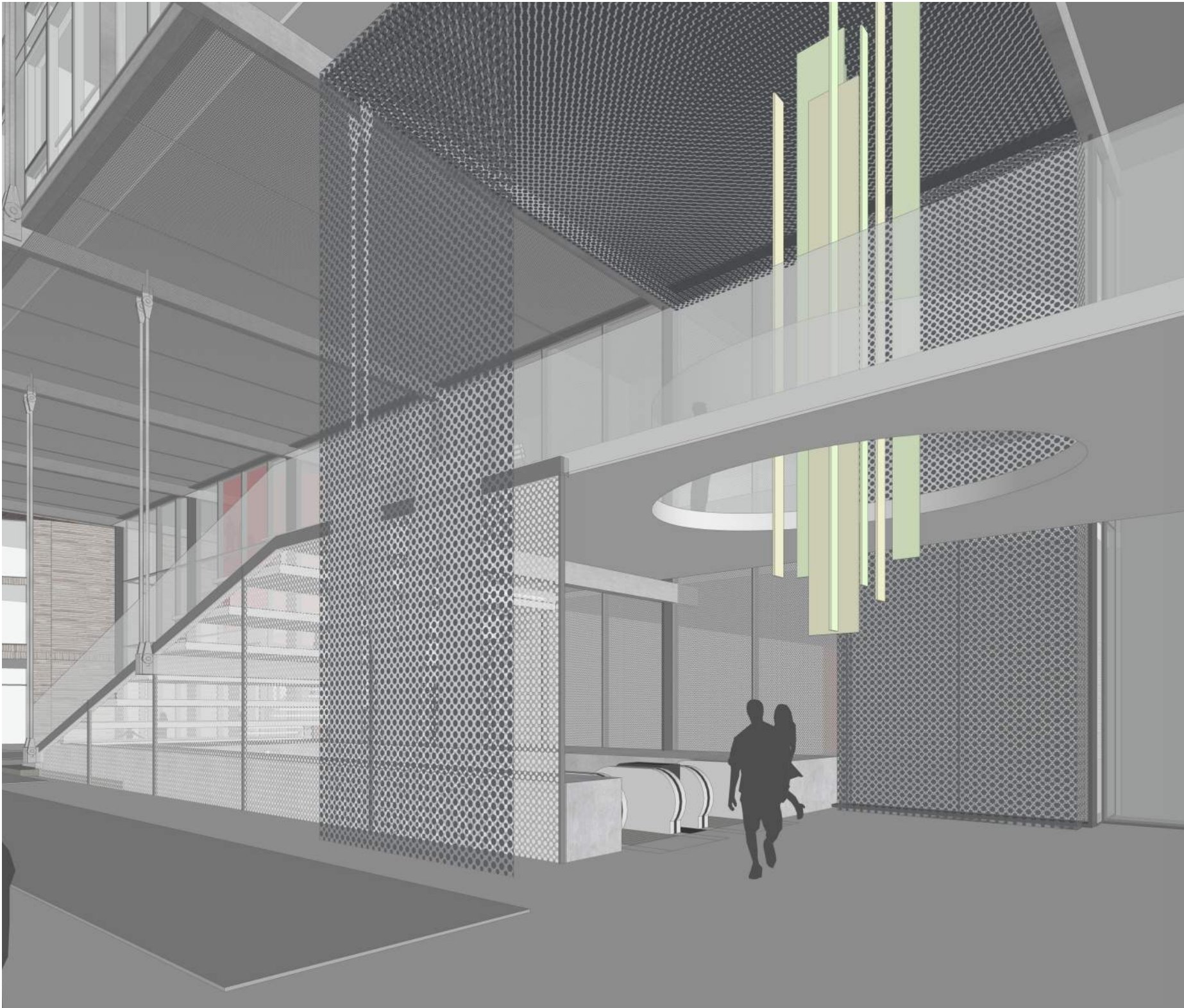
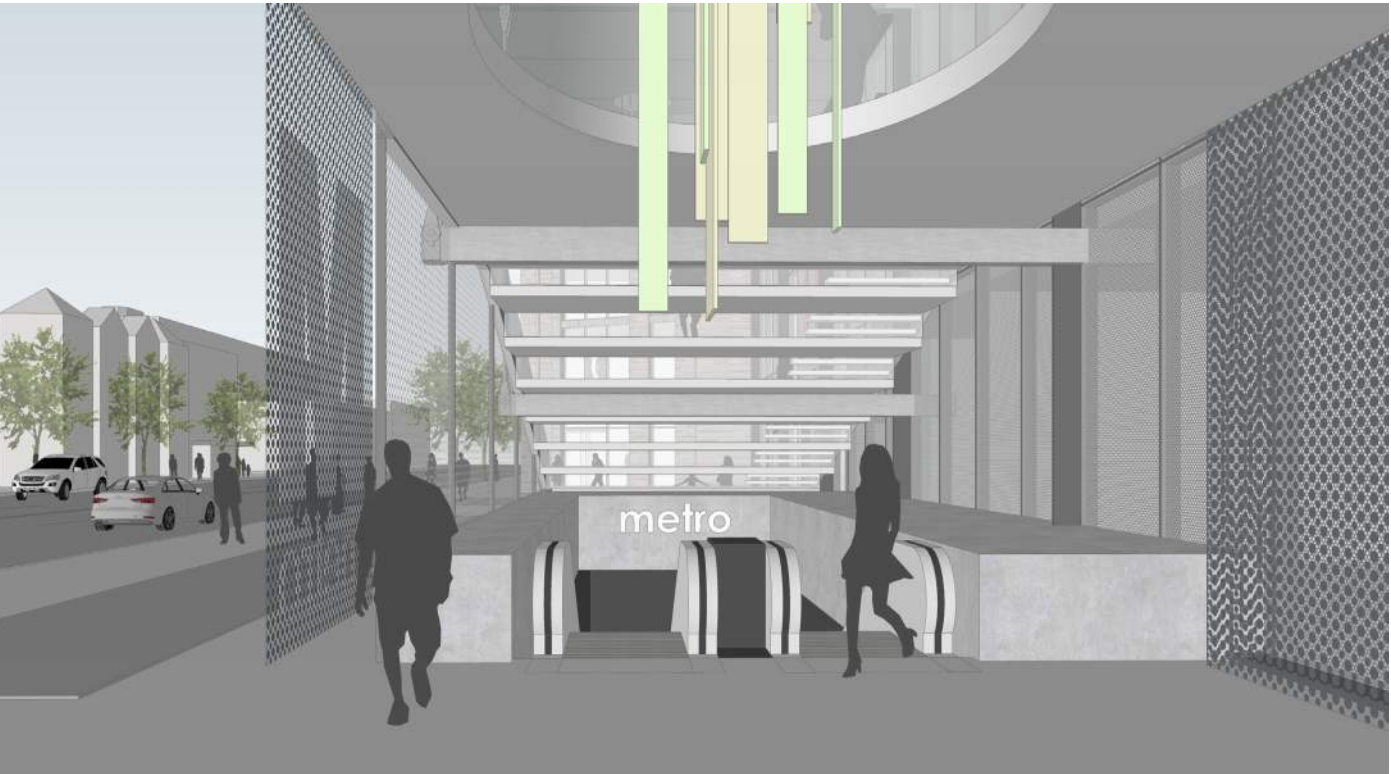
Metro Entrance

HPRB Resubmission - Option B



Metro Entrance

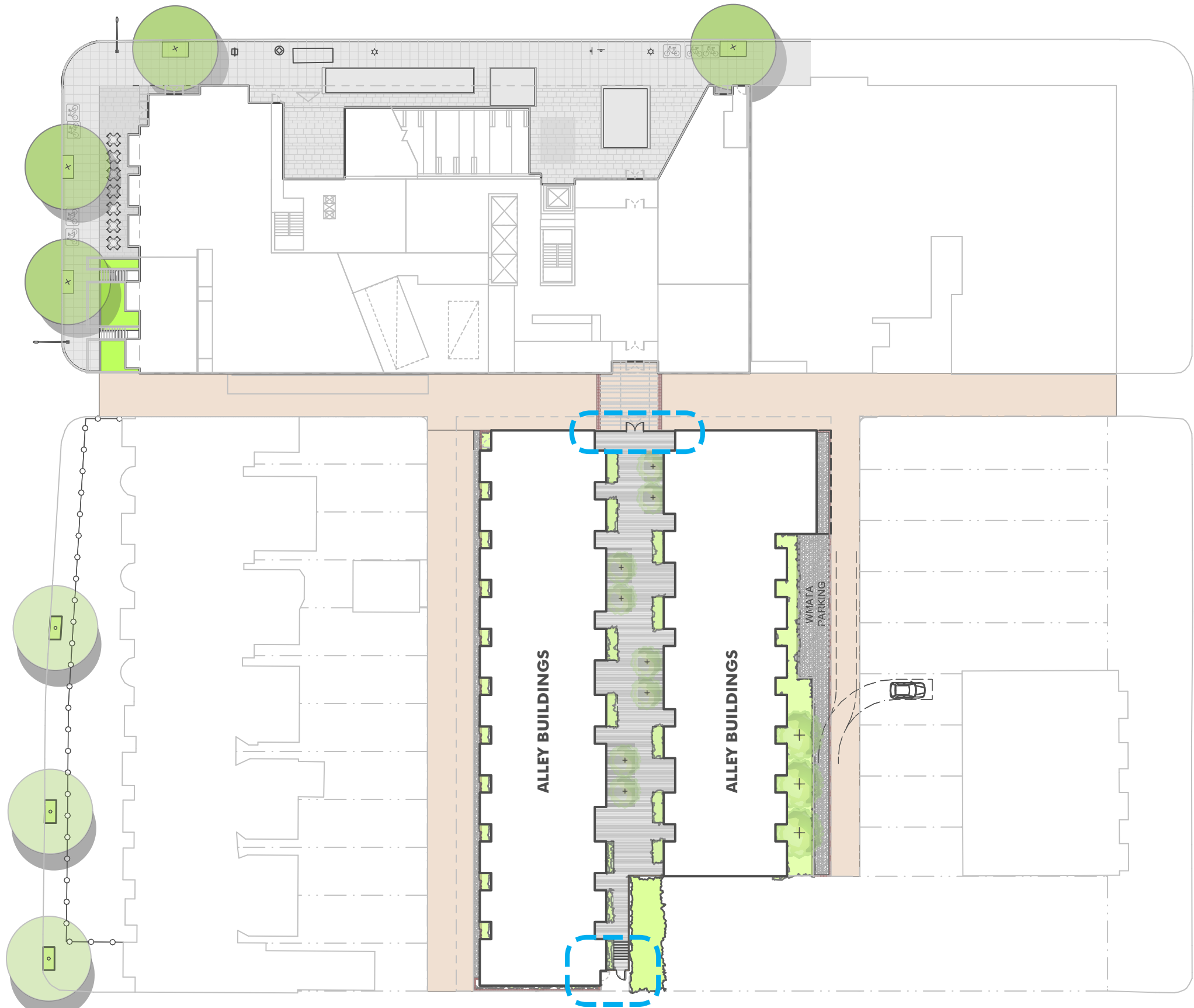
HPRB Resubmission - Option B + Hanging Art



Section 3 - HISTORIC STORYTELLING

Historic Storytelling

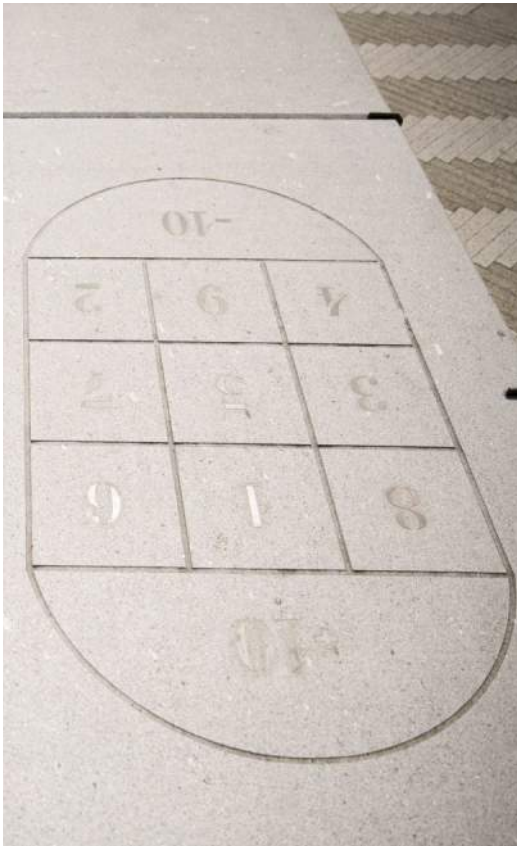
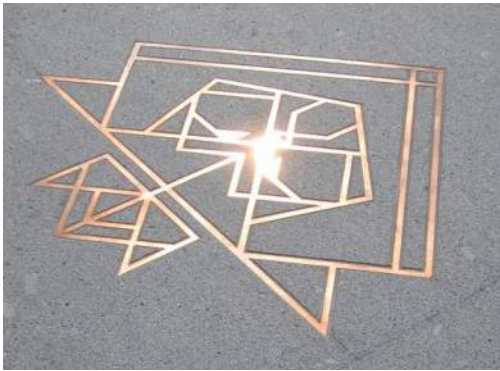
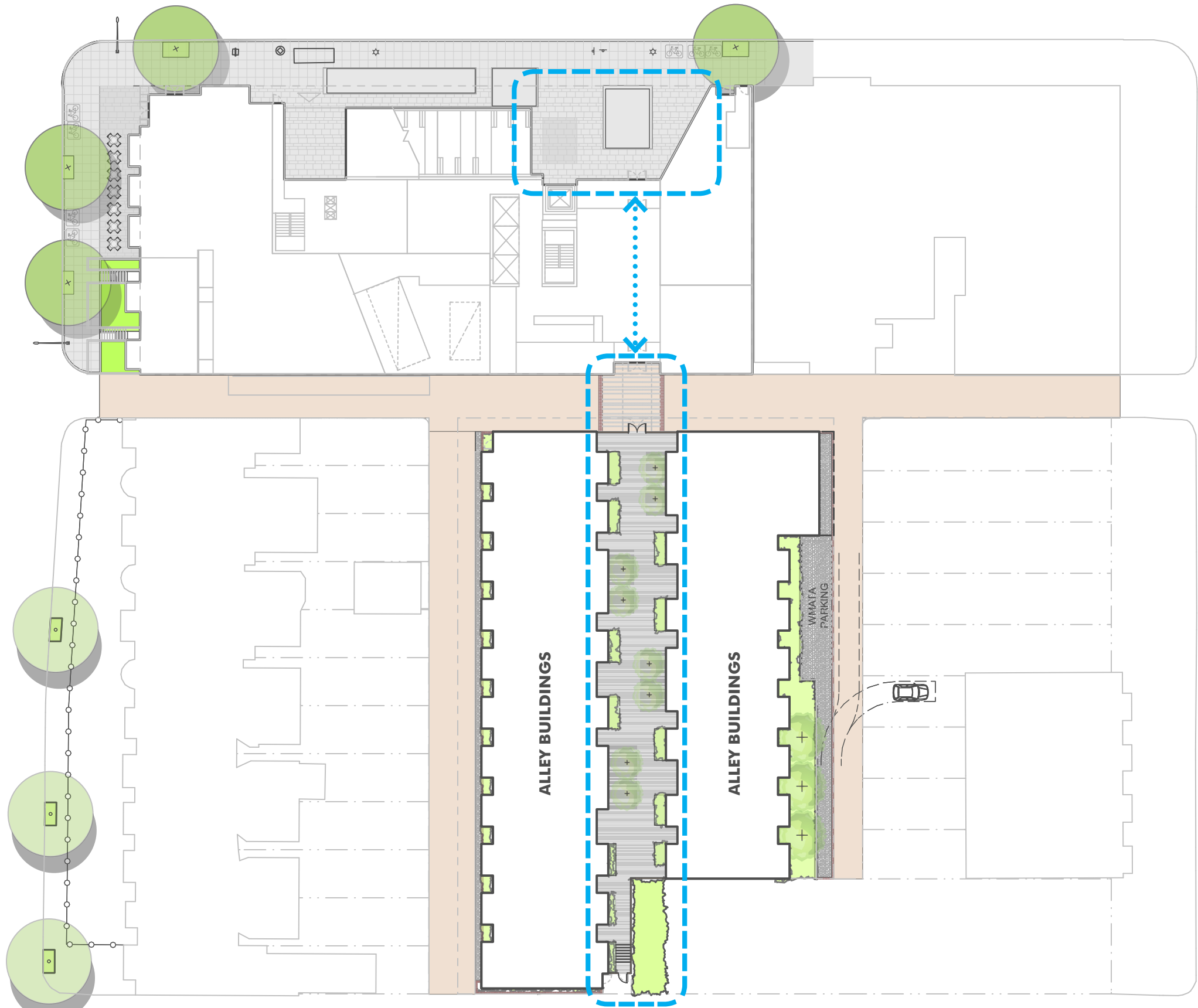
Option 1 | Custom Gates and Fences as Art / Interpretive Elements



OPTION 1 | ON THE GATE

Historic Storytelling

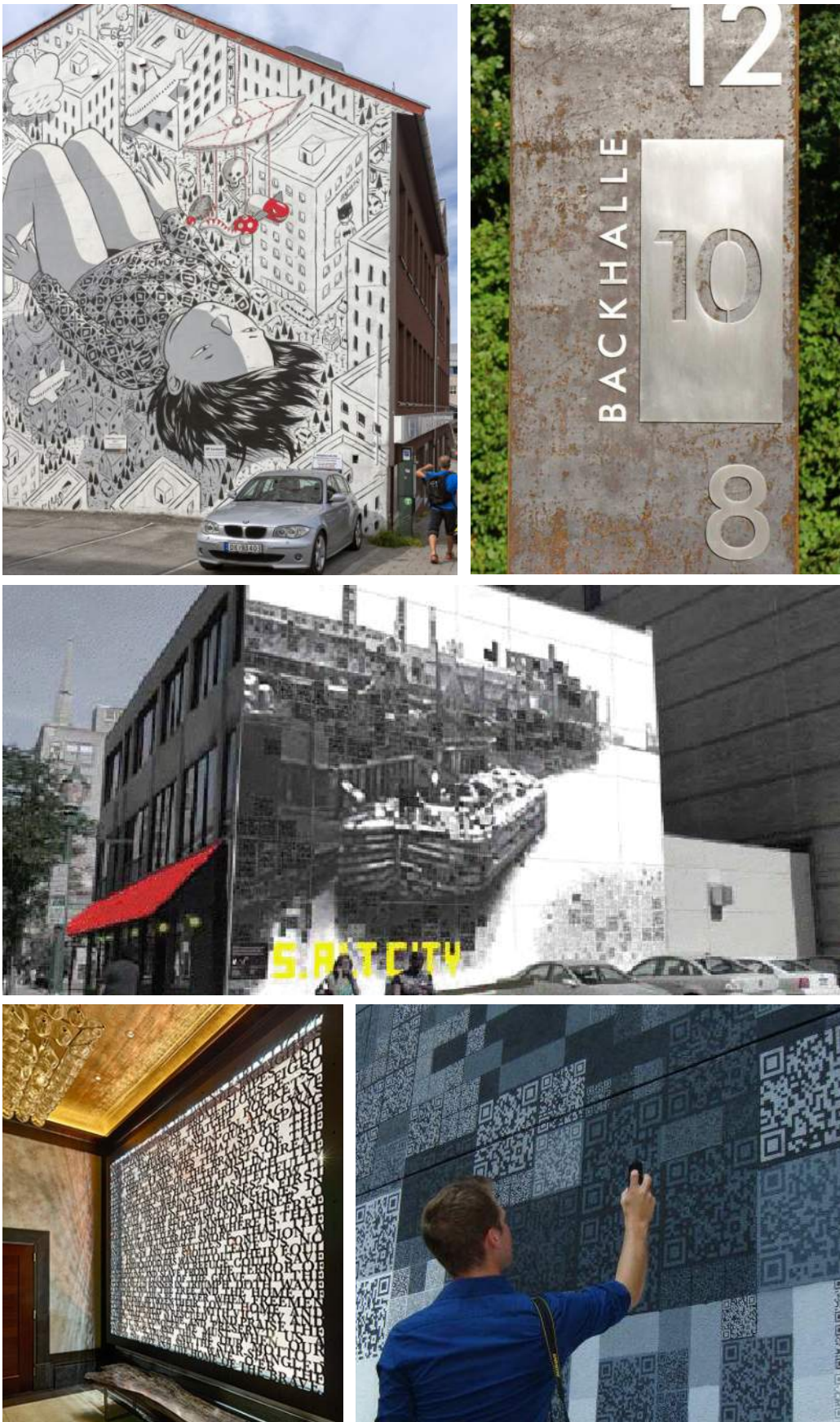
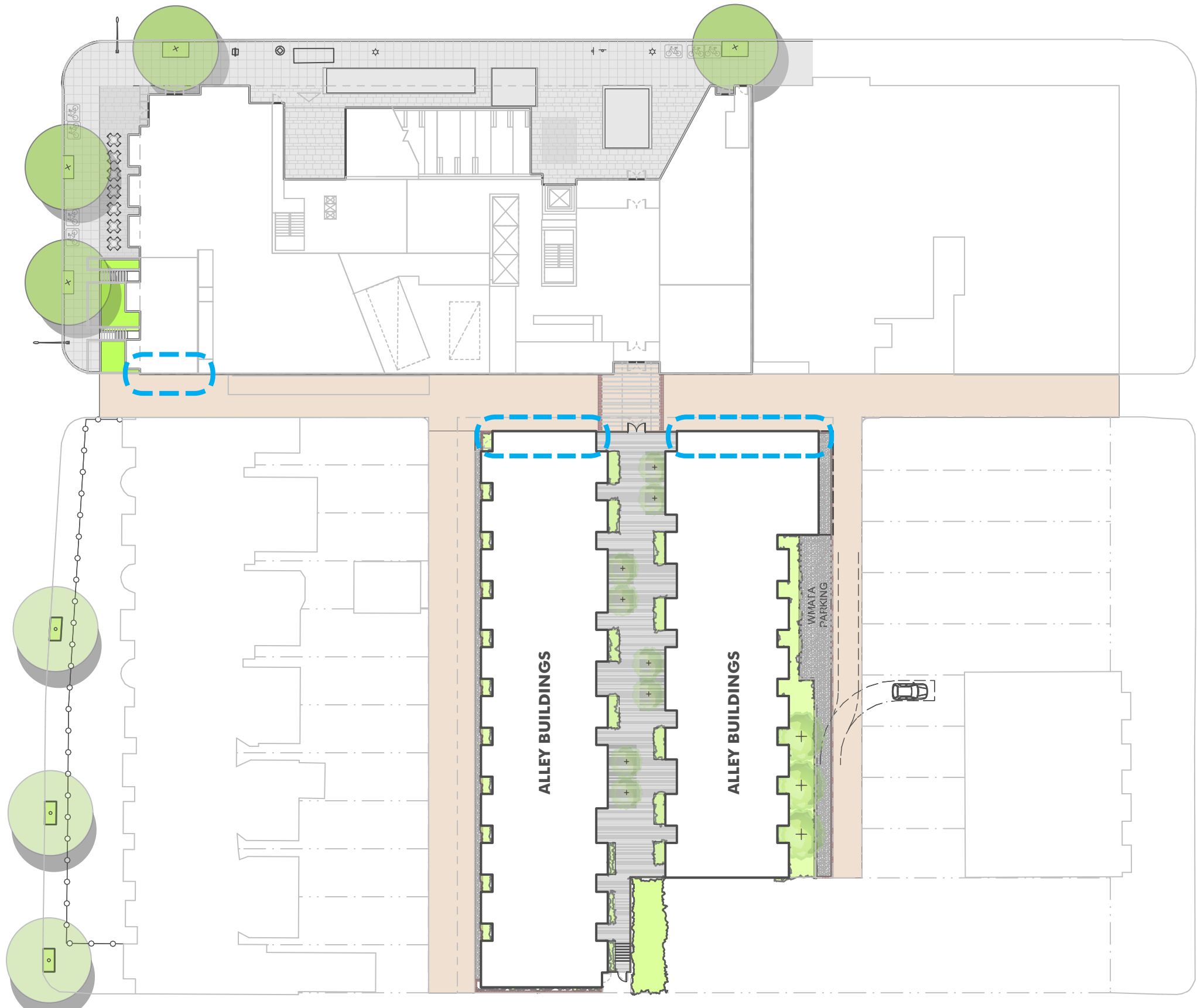
Option 2| Interpretive Paving Elements



OPTION 2| IN PAVING

Historic Storytelling

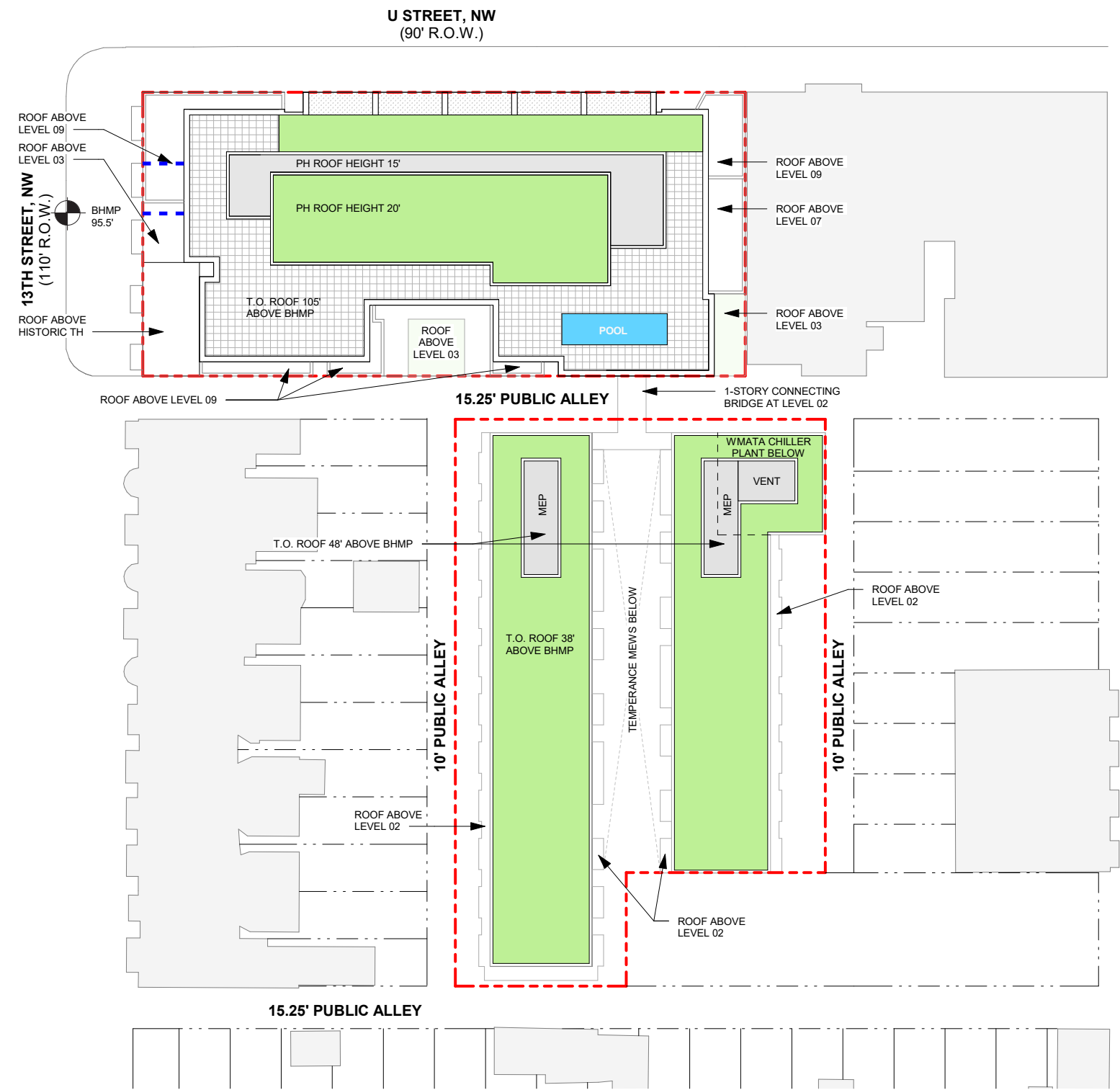
Option 3| Treatment of Vertical Surfaces as Art / Interpretive Elements



OPTION 3| ON THE WALLS

APPENDIX

Roof Plan with Proposed Adjustments

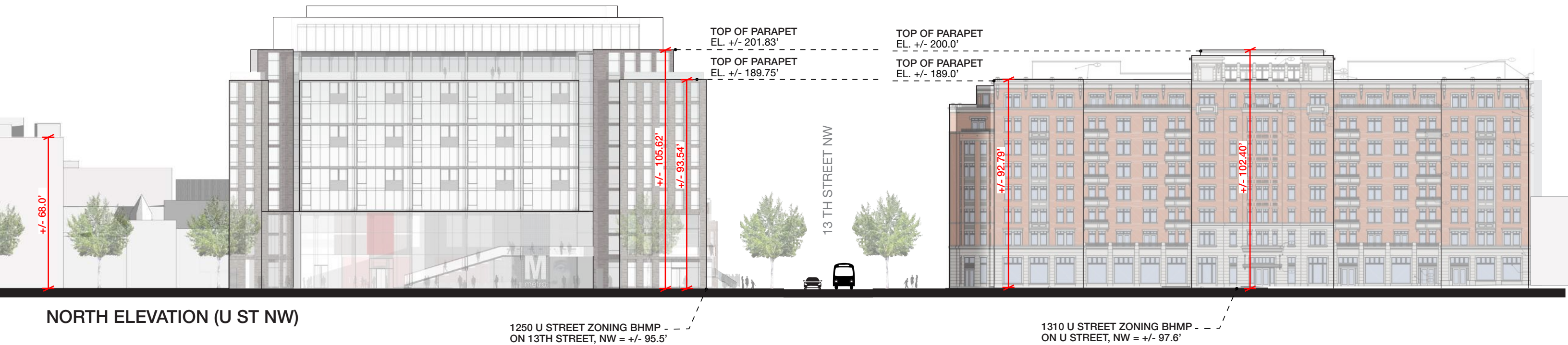


ALTERNATE A NW CORNER SHOWN (ALTERNATE B PLAN PROFILE SHOWN IN DASHED LINE)



Building Elevations

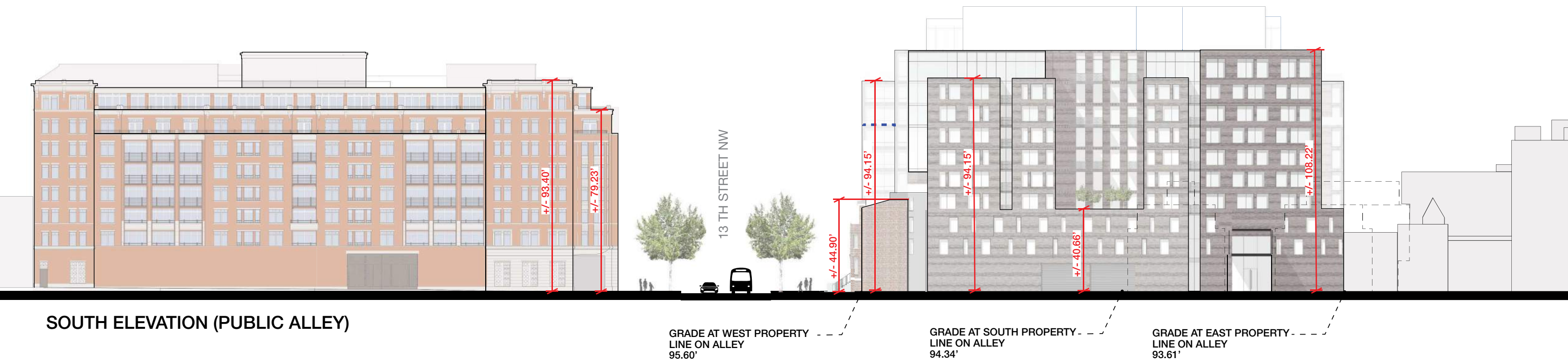
U Street Building with Proposed Adjustments



Note: The elevations shown in black are the height above sea level datum. The dimensions in red are the height above the sidewalk grade.

Building Elevations

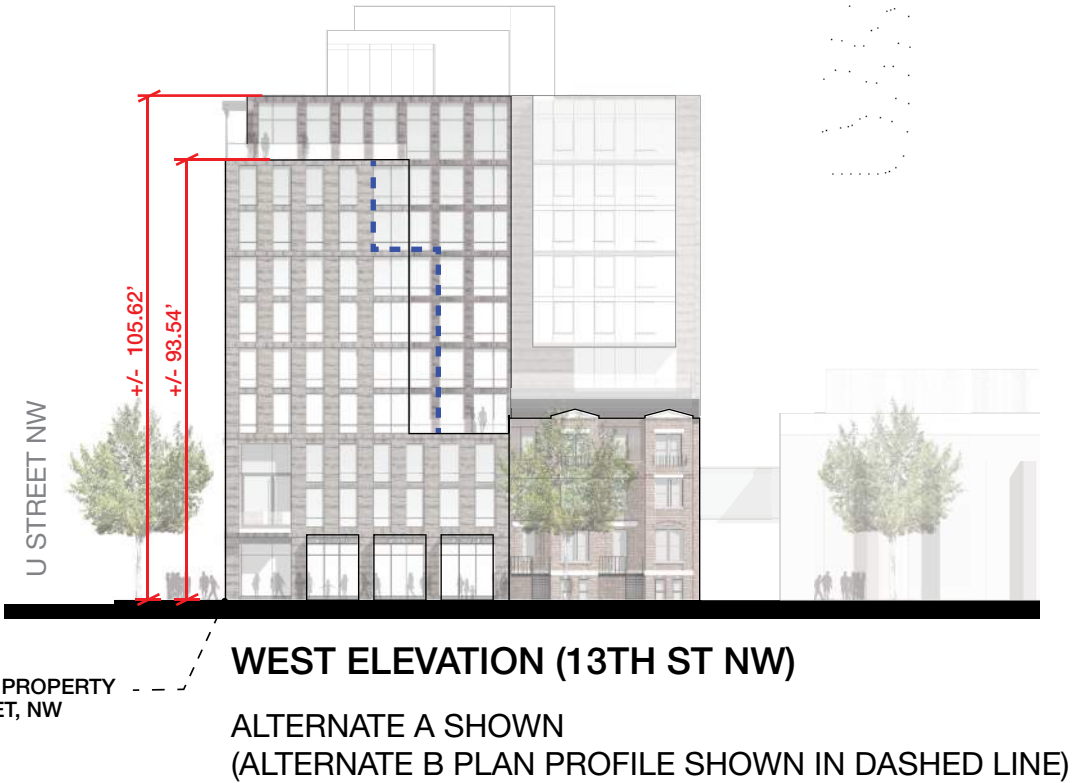
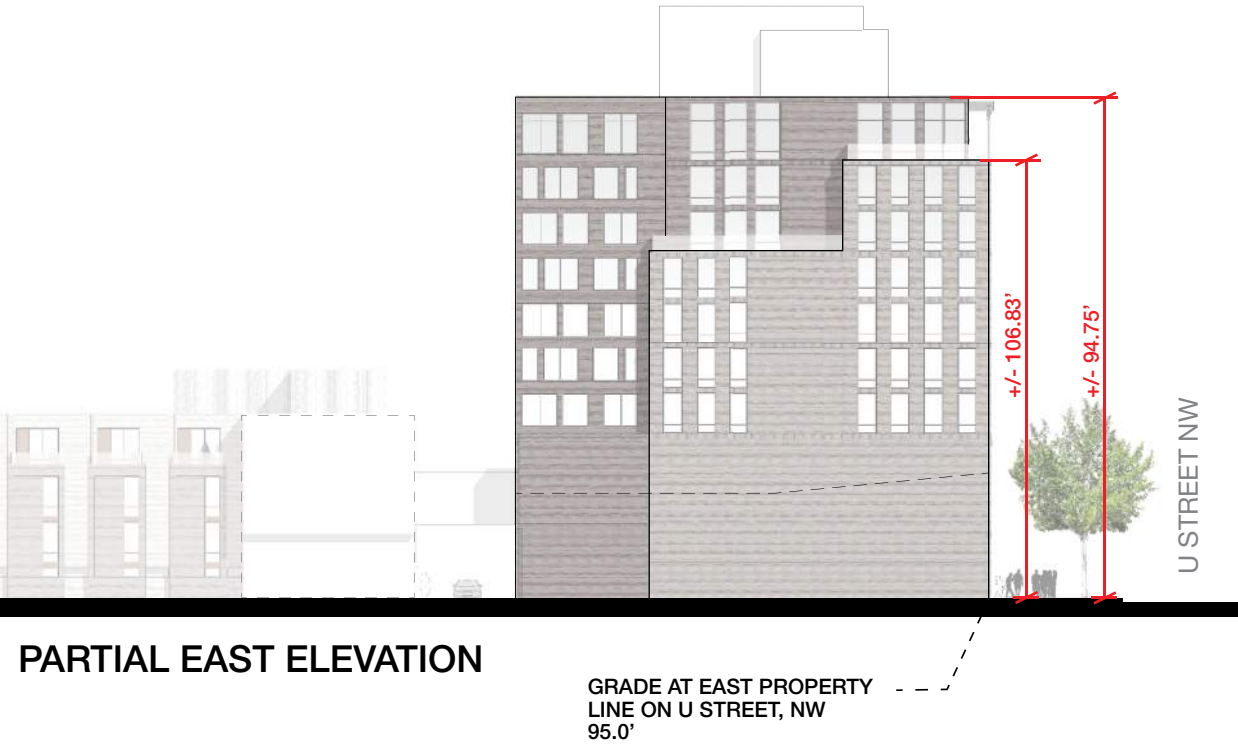
U Street Building with Proposed Adjustments



Note: The elevations shown in black are the height above sea level datum. The dimensions in red are the height above the sidewalk grade.

Building Elevations

U Street Building with Proposed Adjustments



Note: The elevations shown in black are the height above sea level datum. The dimensions in red are the height above the sidewalk grade.