

# THE DISTRICT AT CLIFTON HEIGHTS

**Trinitas** Owner, Developer

**Antunovich Associates** Architecture, Planning, Interior Design

**MKSK** Landscape Architecture and Urban Design

**Bayer Becker** Civil Engineer

**October 15, 2019**



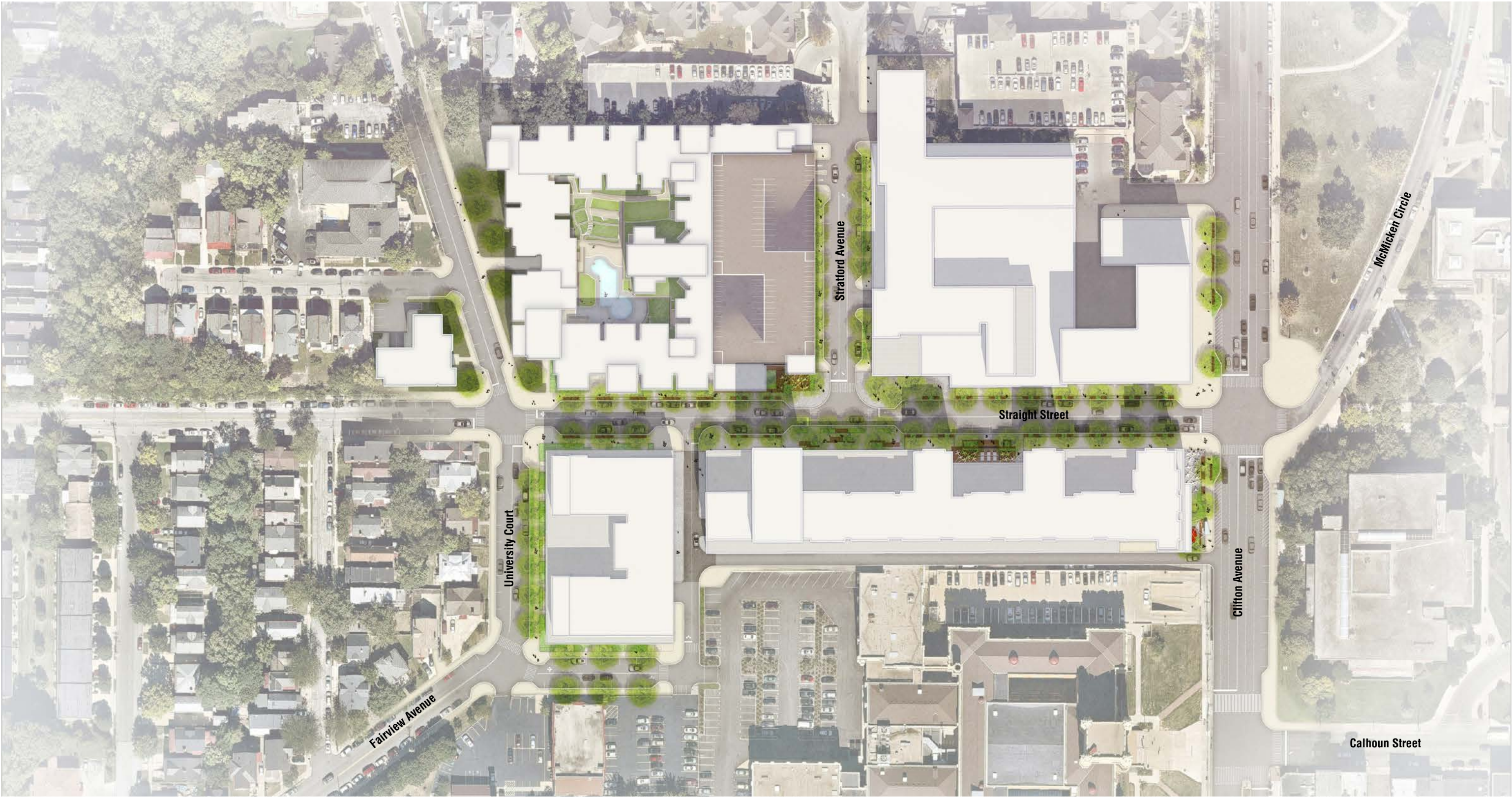
# A Place of Vibrancy



## THE DISTRICT AT CLIFTON HEIGHTS



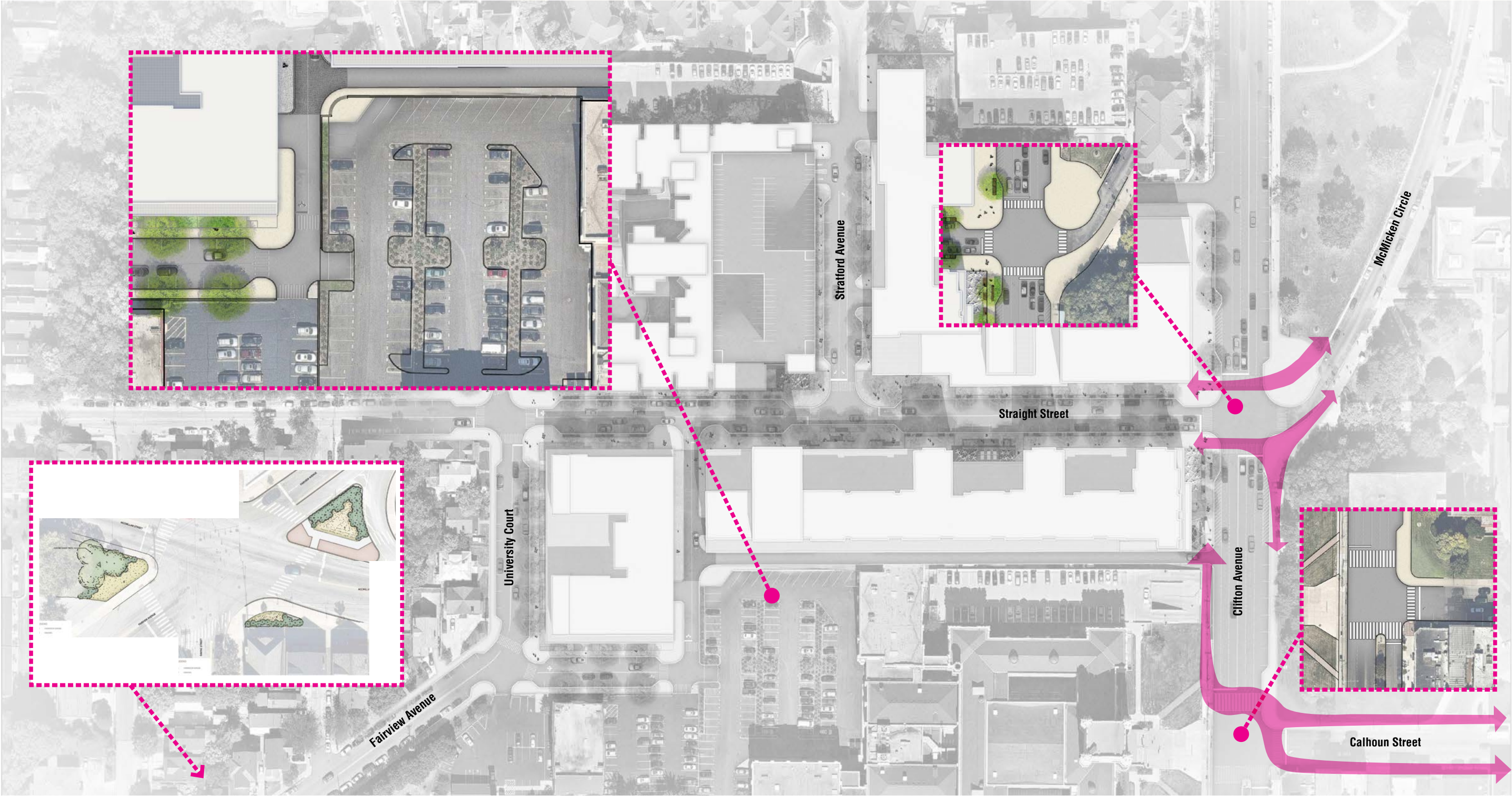
# The Public Space



## THE DISTRICT AT CLIFTON HEIGHTS



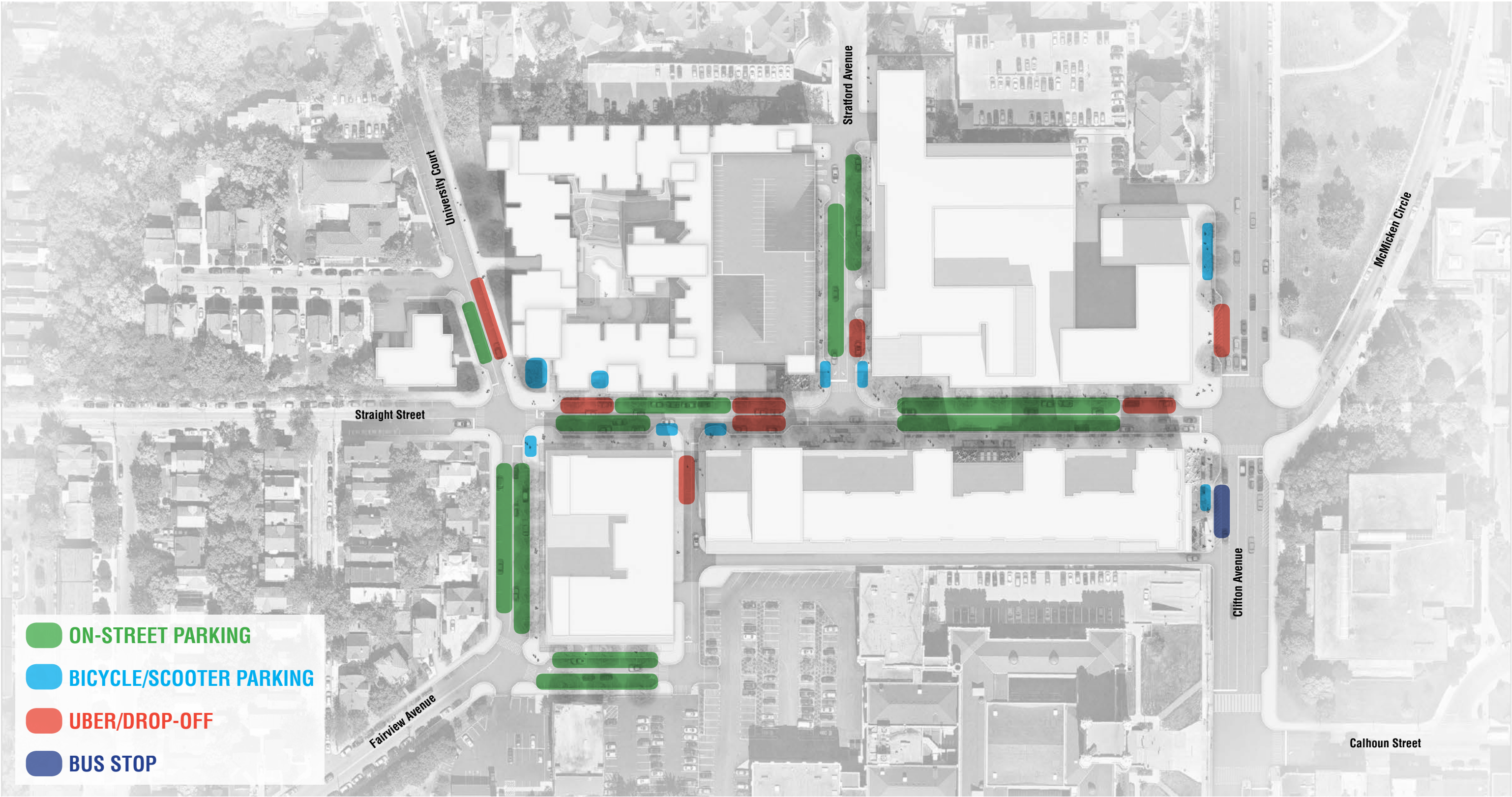
# Connections



## THE DISTRICT AT CLIFTON HEIGHTS



# Multi-Modal Accommodation

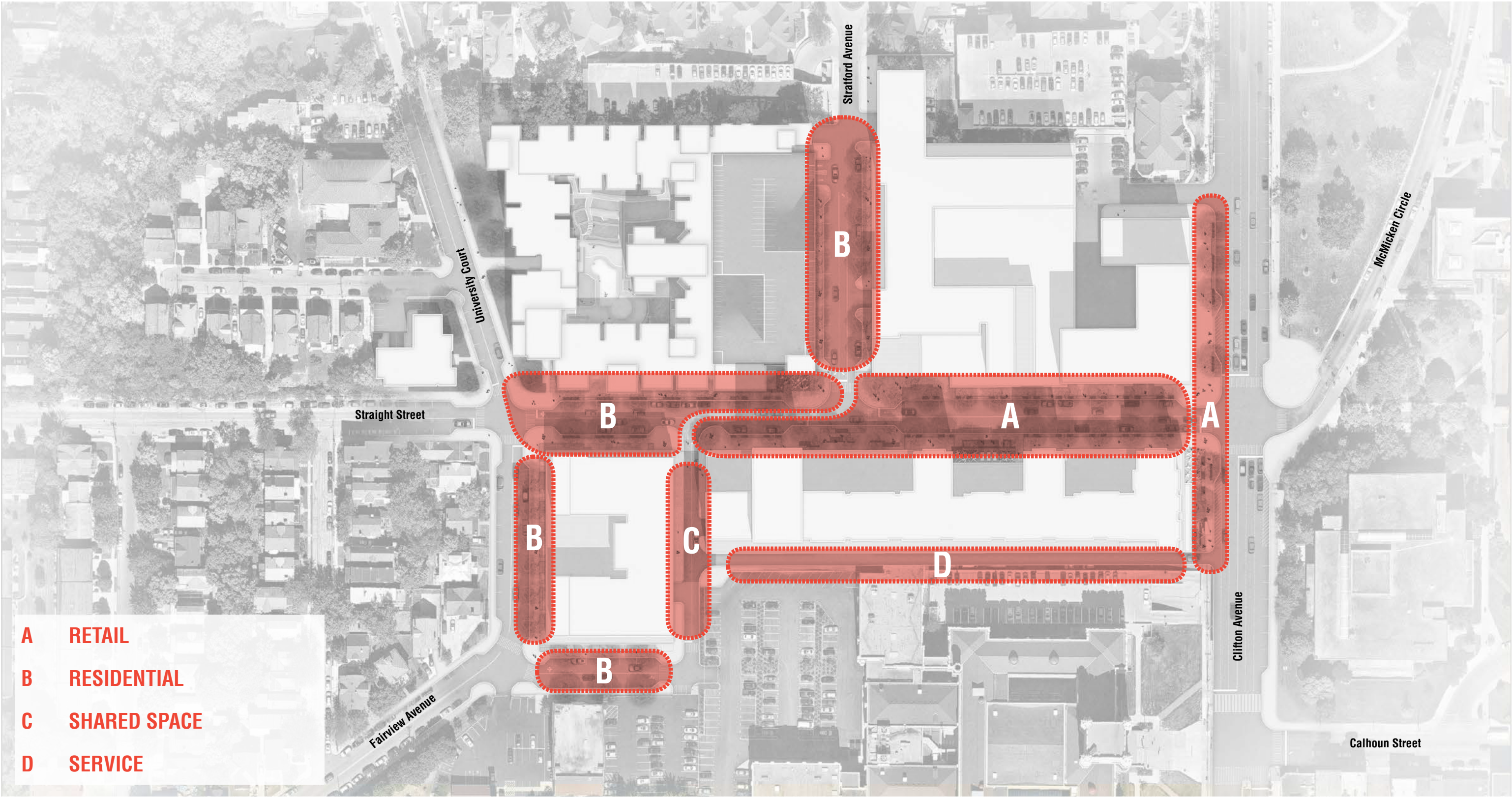


## THE DISTRICT AT CLIFTON HEIGHTS

**STREETSCAPES**



# Types



## THE DISTRICT AT CLIFTON HEIGHTS



# Character (Retail Streets)

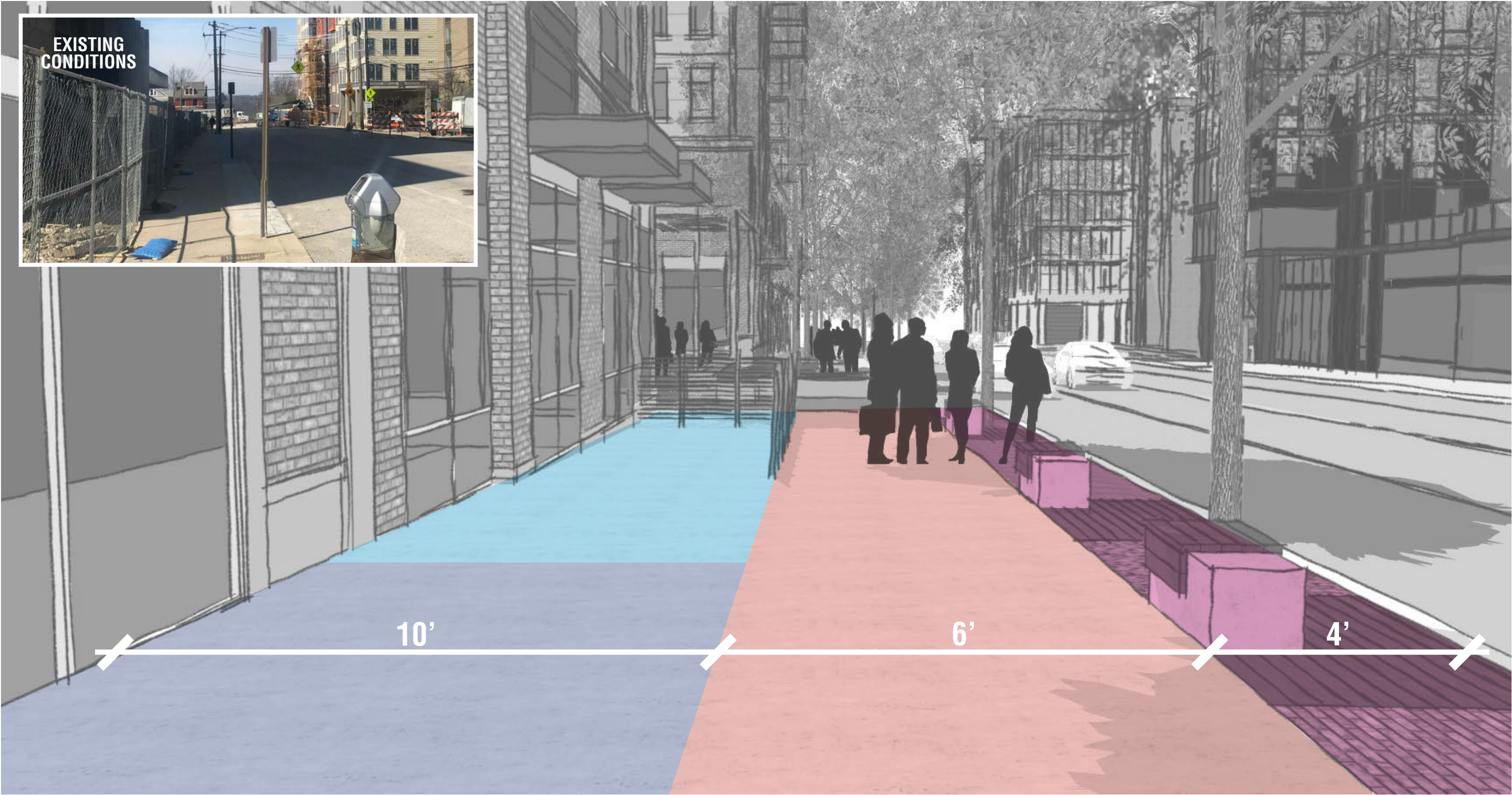


## THE DISTRICT AT CLIFTON HEIGHTS



# Straight Street - Retail @ Ground Floor

AMENITY      SIDEWALK      DINING      RETAIL/SEATING



## THE DISTRICT AT CLIFTON HEIGHTS



# Straight Street - Residential @ Ground Floor

SIDEWALK GRADE CHANGE

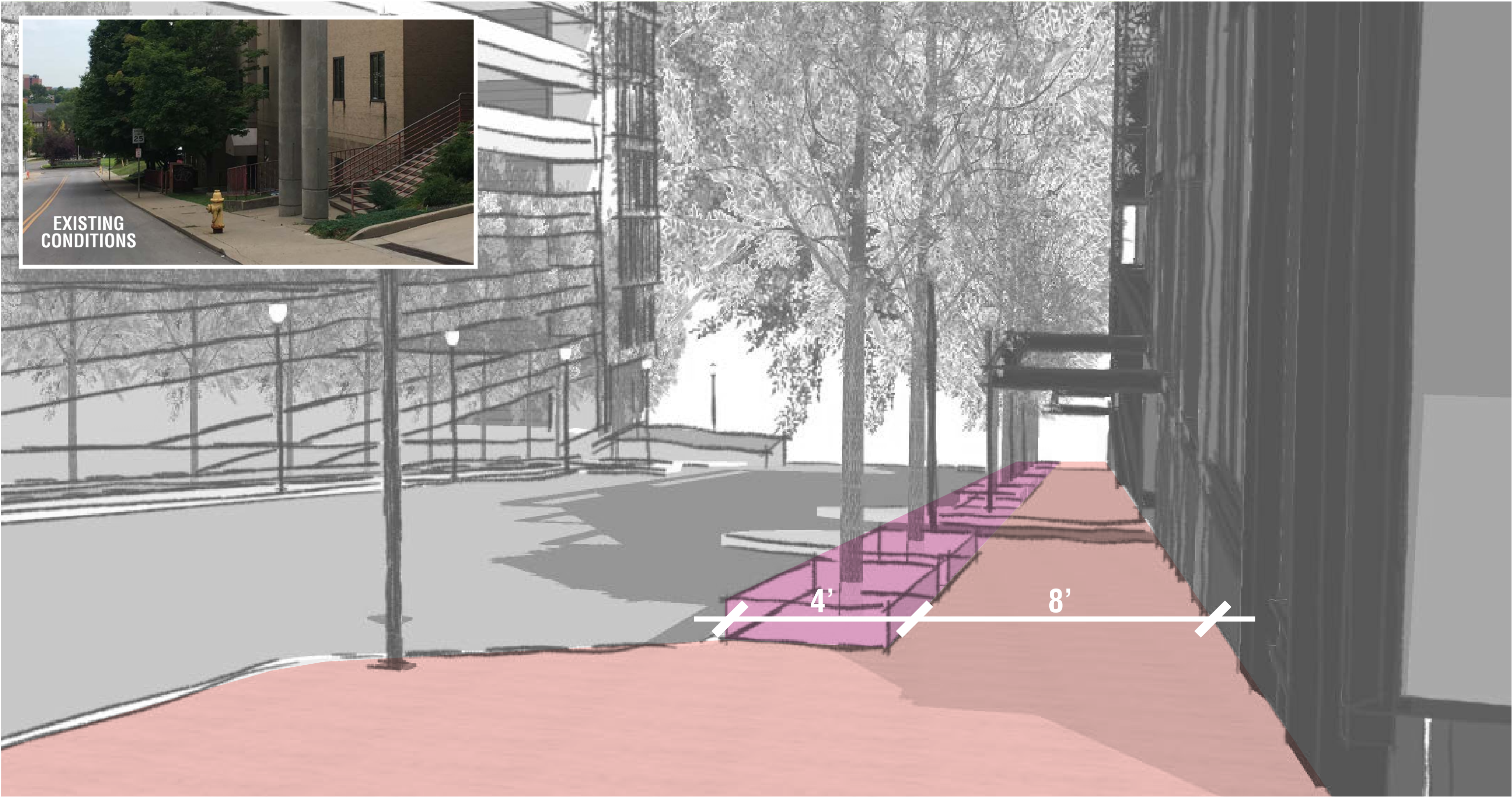


## THE DISTRICT AT CLIFTON HEIGHTS



# Stratford Avenue - Residential @ Ground Floor

AMENITY SIDEWALK

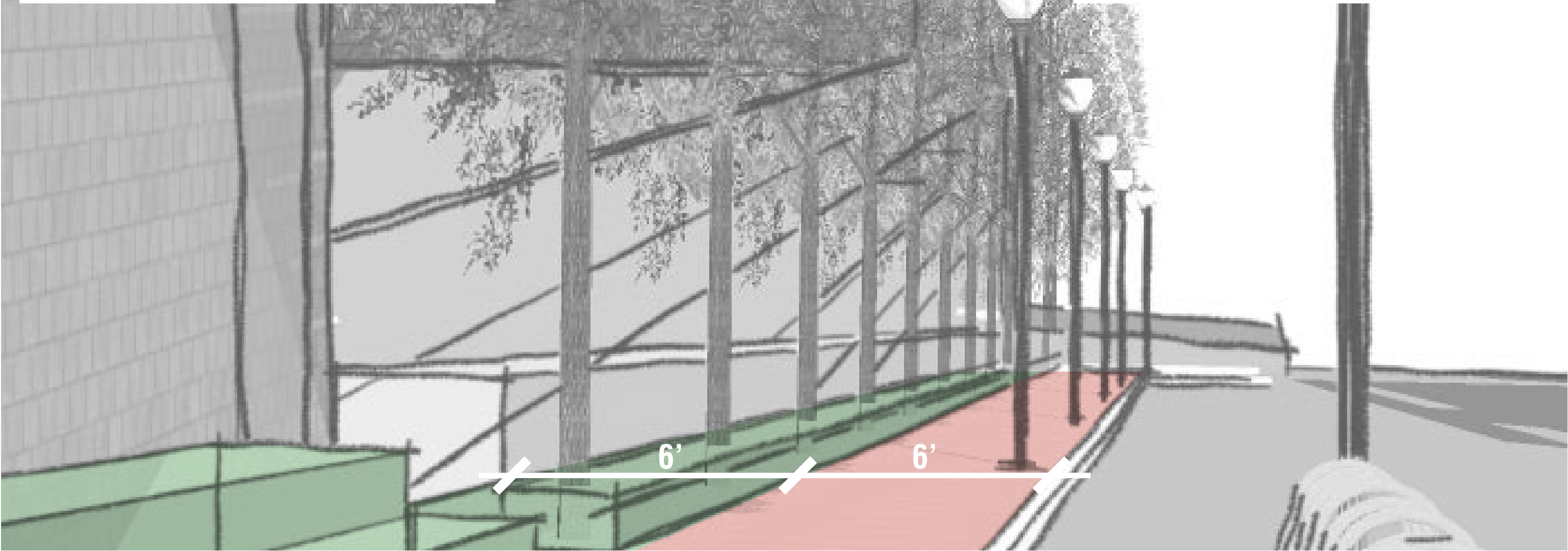


## THE DISTRICT AT CLIFTON HEIGHTS



# Stratford Avenue - Garage @ Ground Floor

SIDEWALK PLANTED BUFFER

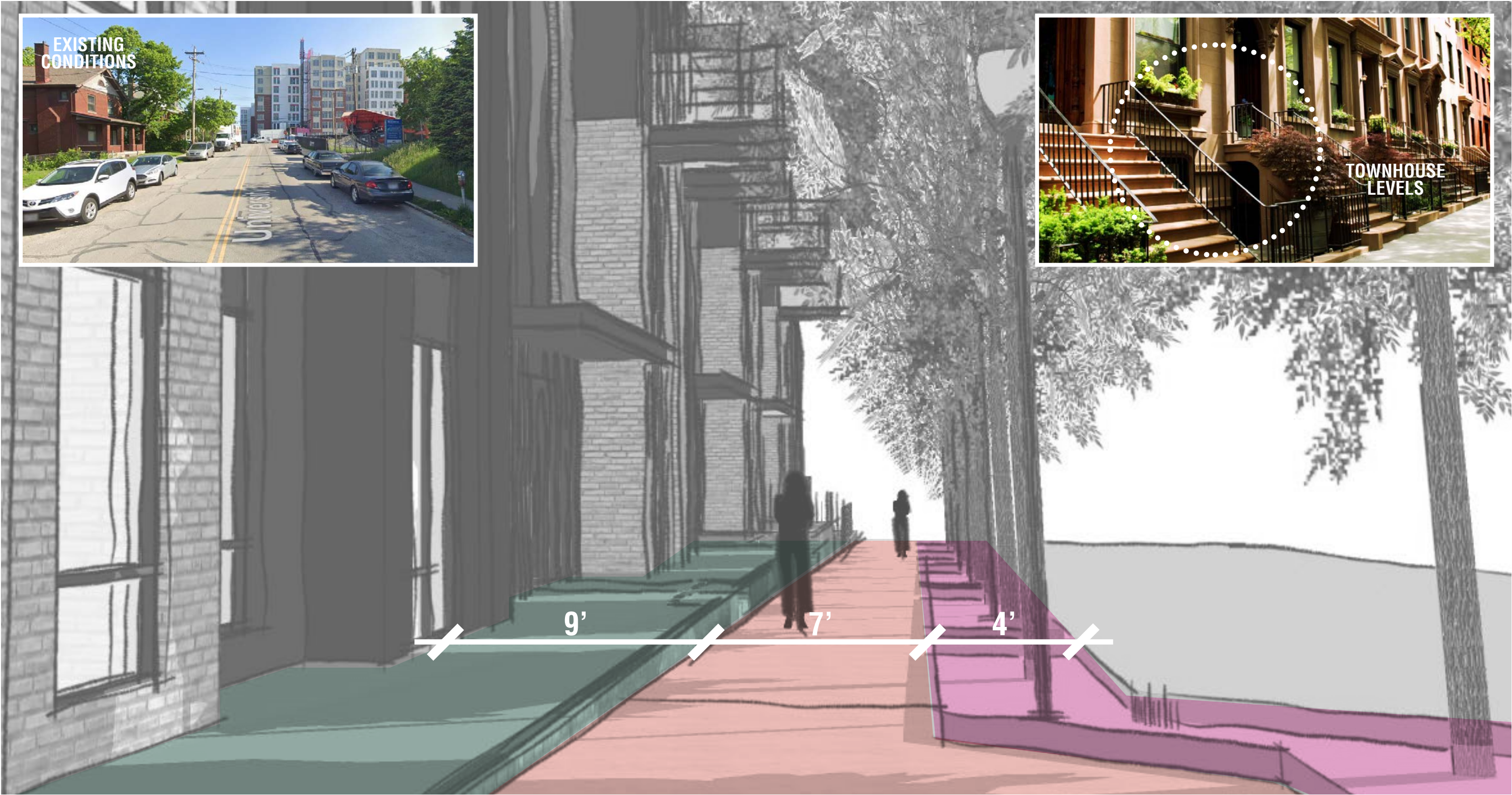
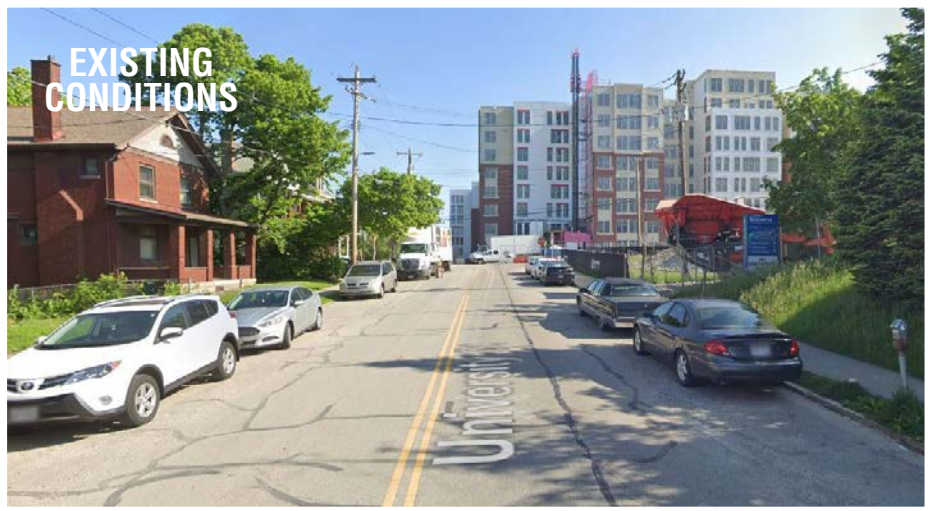


## THE DISTRICT AT CLIFTON HEIGHTS



# University Court - Residential @ Ground Floor

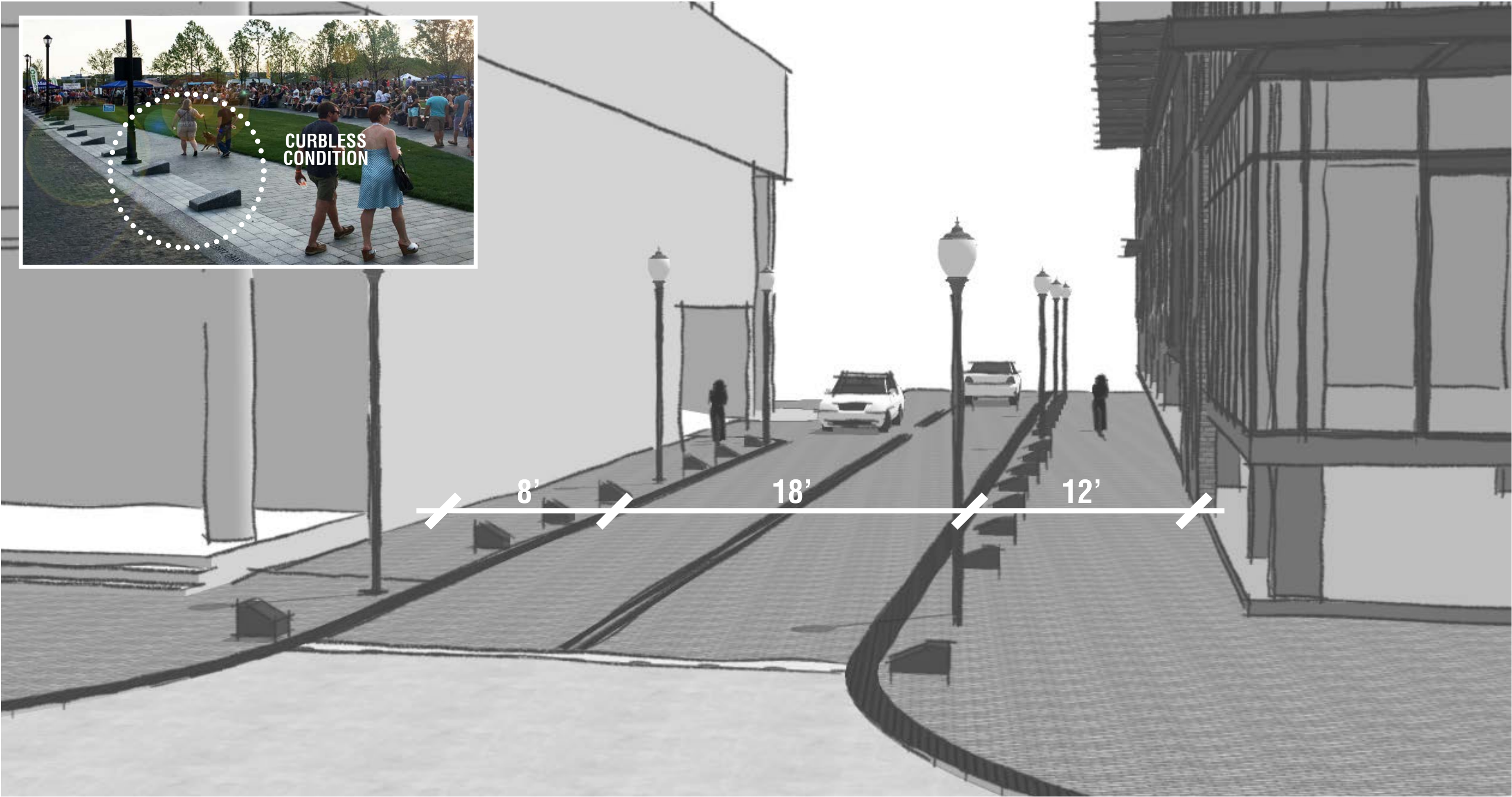
AMENITY      SIDEWALK      RESIDENTIAL YARD



## THE DISTRICT AT CLIFTON HEIGHTS



# Private Drive



## THE DISTRICT AT CLIFTON HEIGHTS



# PLACEMAKING



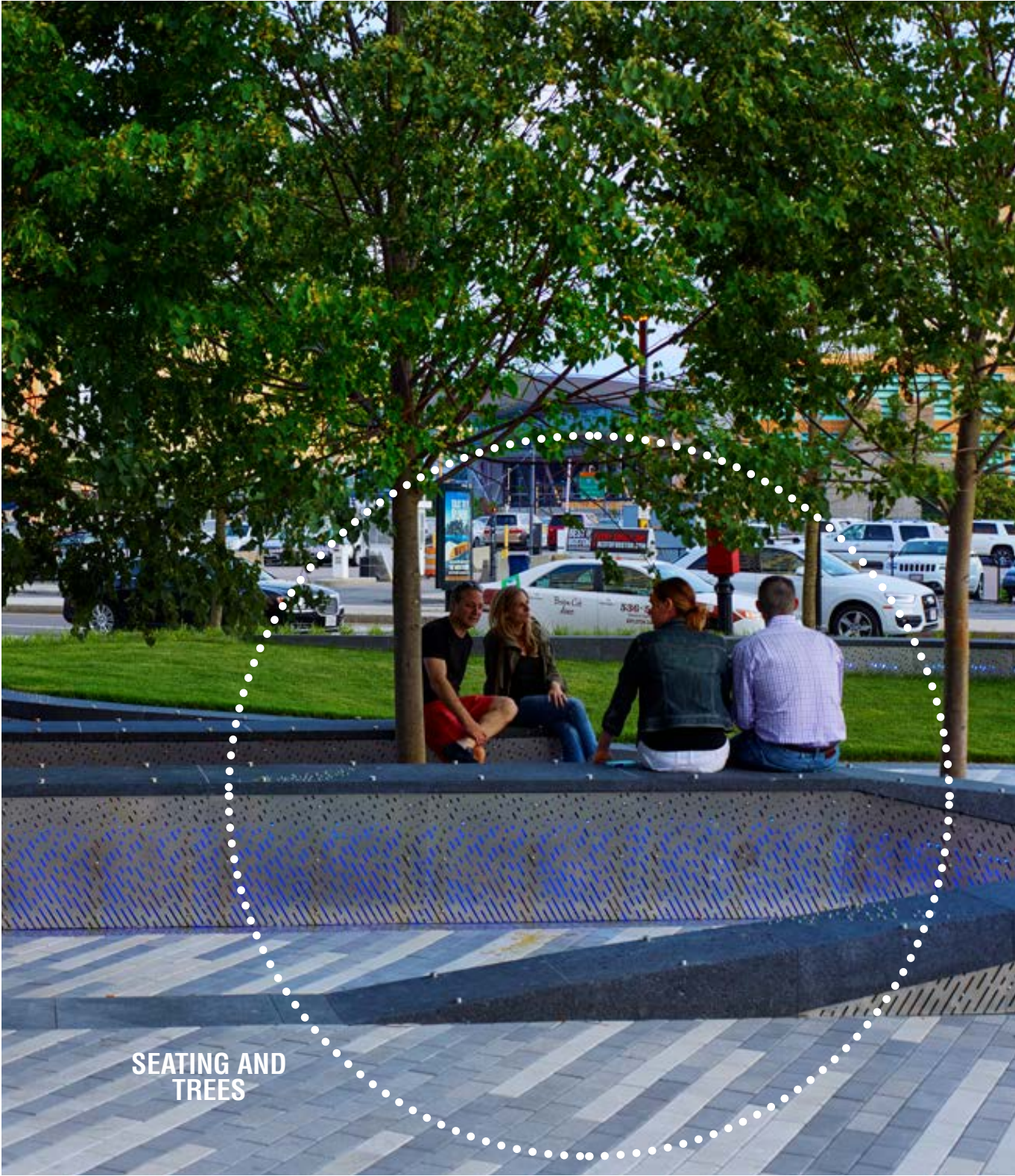
# Experiences



## THE DISTRICT AT CLIFTON HEIGHTS



# x1 Spatial Elements

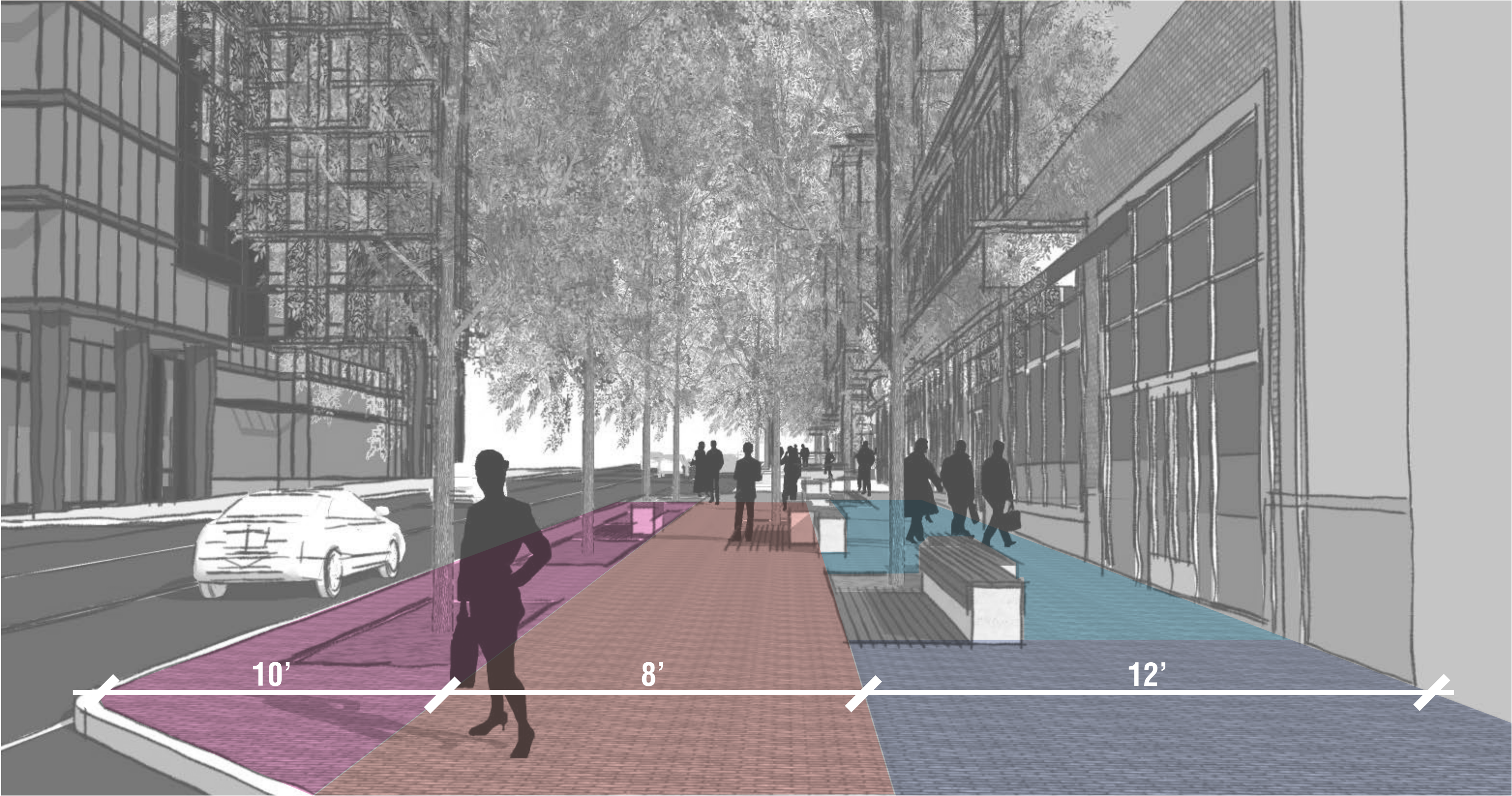


## THE DISTRICT AT CLIFTON HEIGHTS



# x1 Spatial Definition

AMENITY   SIDEWALK   DINING   RETAIL/SEATING

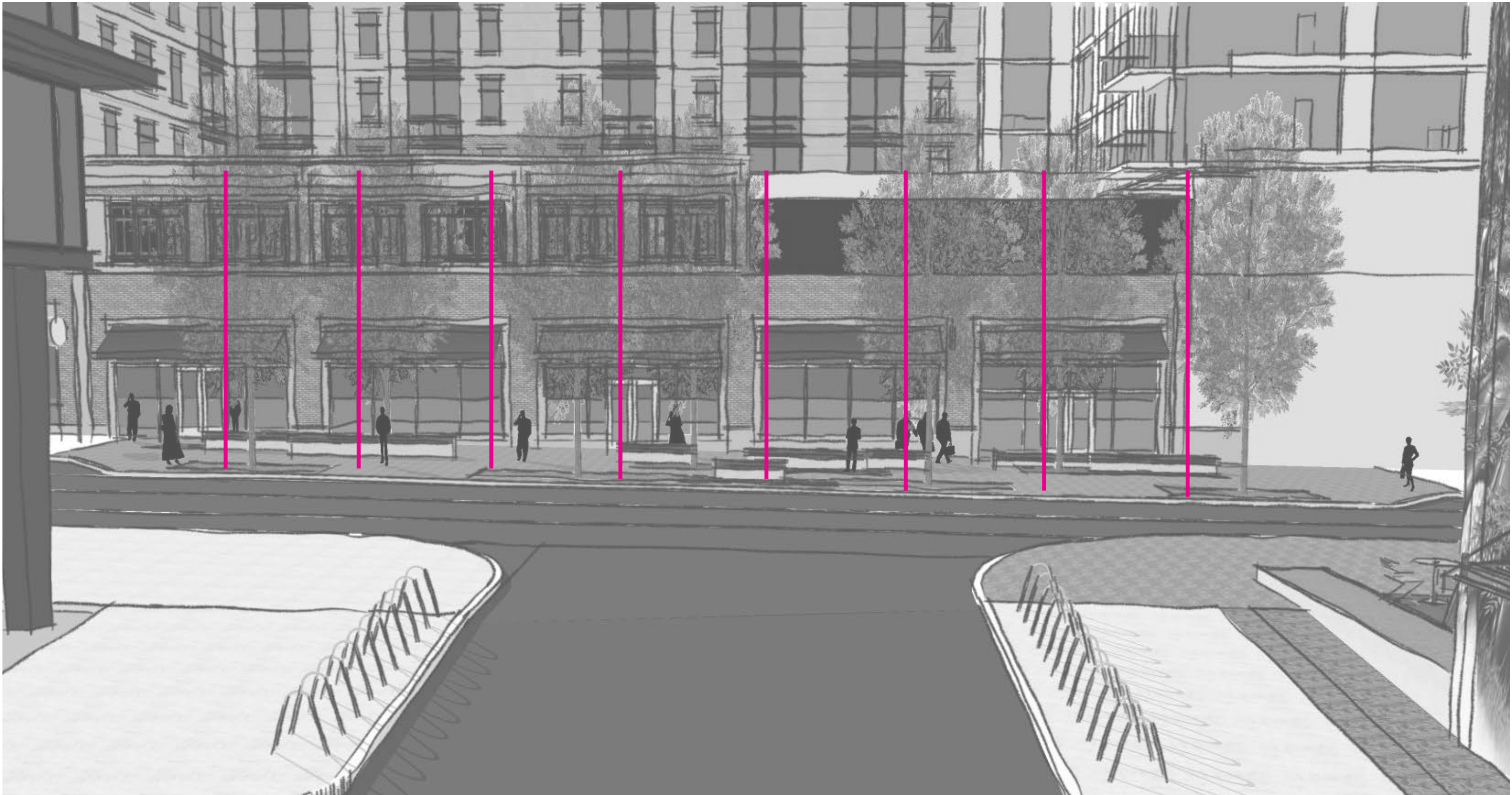


## THE DISTRICT AT CLIFTON HEIGHTS

IDENTITY   ROOTS   INSTA



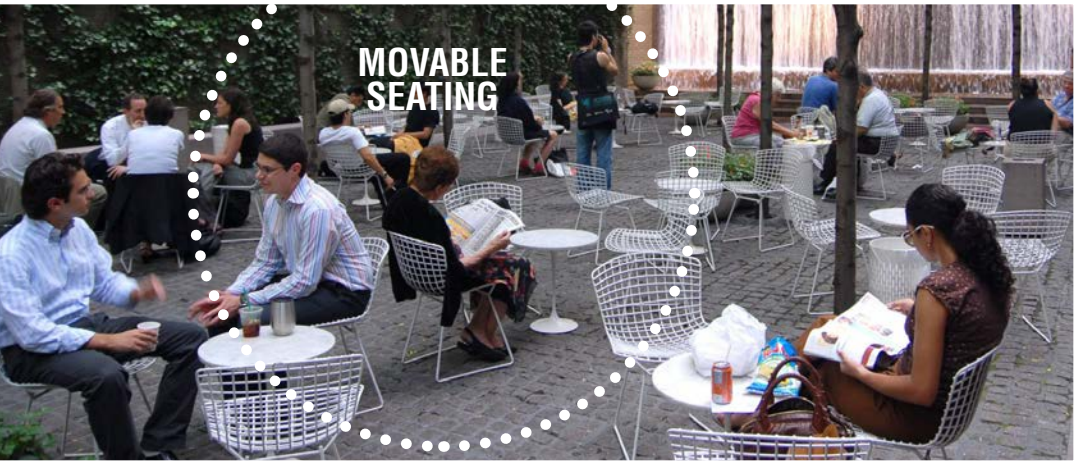
# x1 Spatial Definition



## THE DISTRICT AT CLIFTON HEIGHTS



# x2 Spatial Elements



## THE DISTRICT AT CLIFTON HEIGHTS



# x2 Spatial Definition

- AMENITY
- SIDEWALK
- DINING
- PUBLIC PLAZA
- GRADE CHANGE



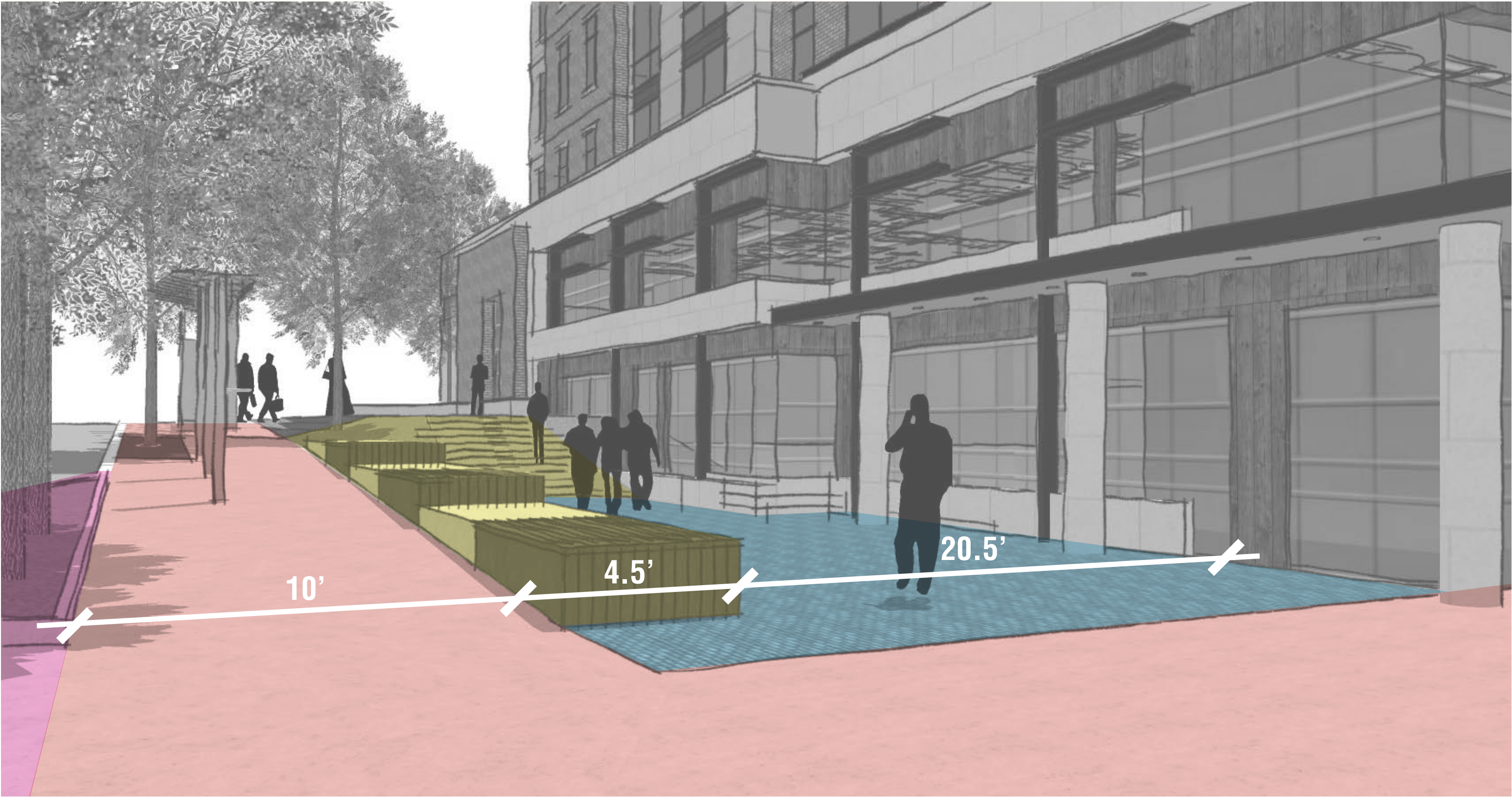
## THE DISTRICT AT CLIFTON HEIGHTS

- GATEWAY
- WELCOME
- BEACON
- VISIBLE
- TRANSITION



# x2 Spatial Definition

AMENITY      SIDEWALK      DINING      GRADE CHANGE



## THE DISTRICT AT CLIFTON HEIGHTS

GATEWAY      WELCOME      BEACON      VISIBLE      TRANSITION



# x3 Spatial Elements

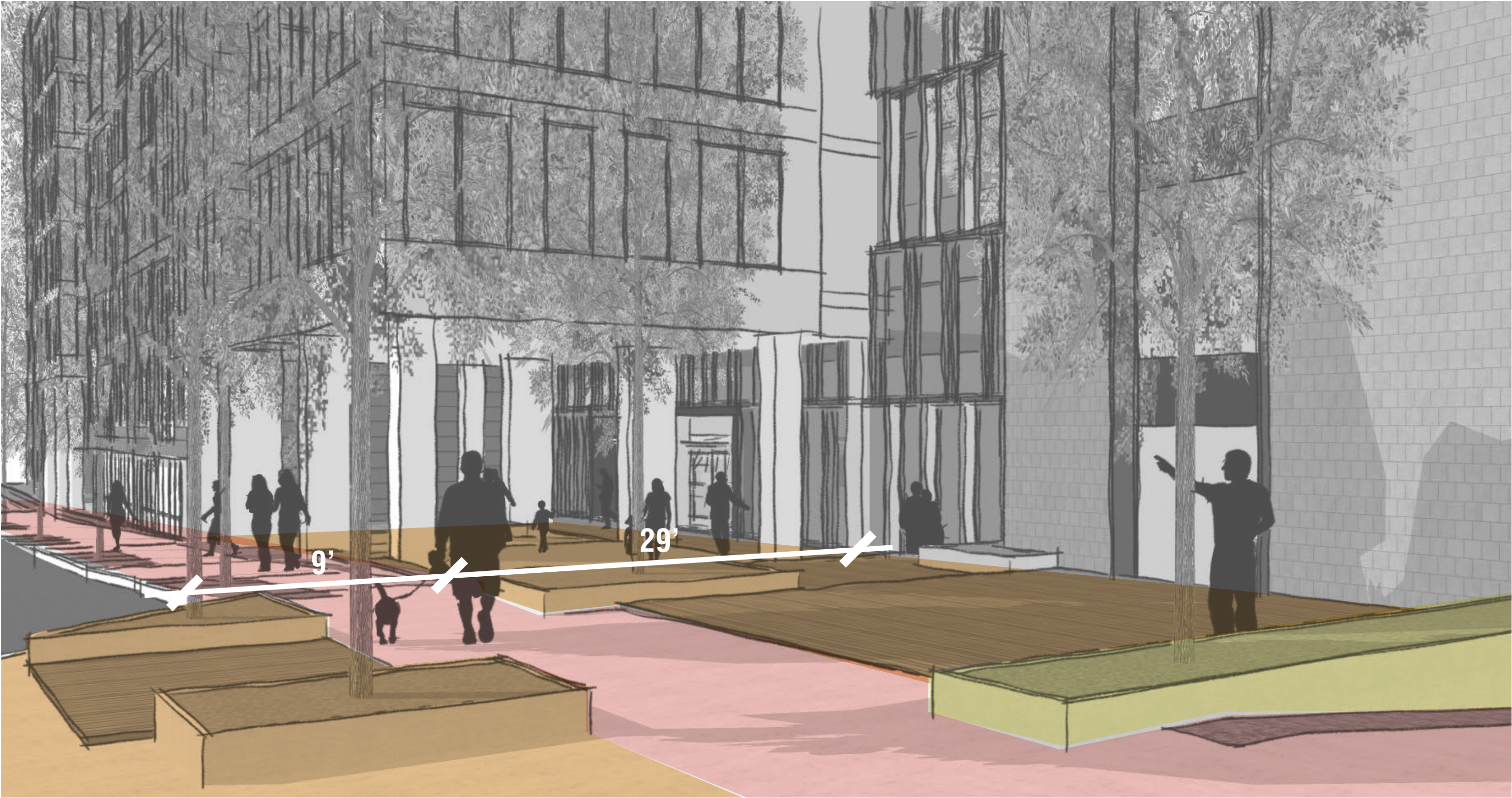


## THE DISTRICT AT CLIFTON HEIGHTS



# x3 Spatial Definition

SIDEWALK PUBLIC PLAZA GRADE CHANGE



## THE DISTRICT AT CLIFTON HEIGHTS

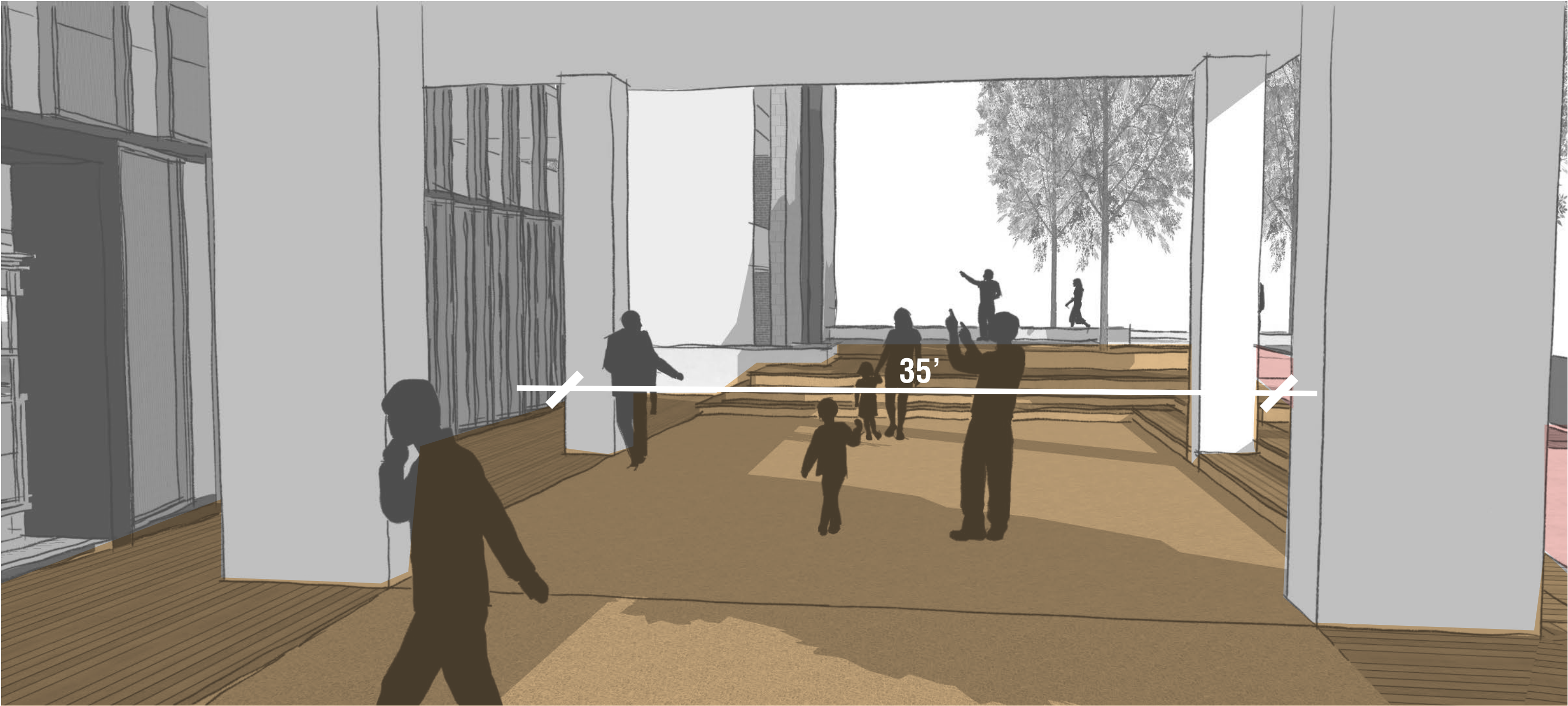
FLEXIBLE WHIMSY PLAY STAGE FILM PERFORMANCE ENTERTAINMENT



# x3 Spatial Definition

SIDEWALK

PUBLIC PLAZA



## THE DISTRICT AT CLIFTON HEIGHTS

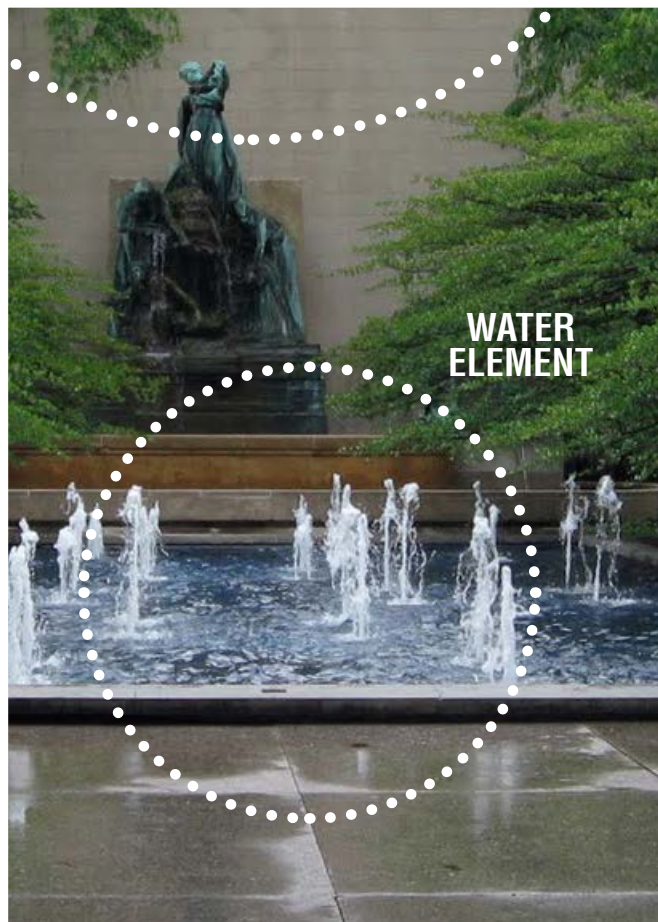
Trinitas Owner, Developer • Antunovich Associates Architecture, Planning, Interior Design • MKSK Landscape Architecture and Urban Design • Bayer Becker Civil Engineer

FLEXIBLE WHIMSY PLAY STAGE FILM PERFORMANCE ENTERTAINMENT

Cincinnati, Ohio | October 15, 2019



# x4 Spatial Elements



## THE DISTRICT AT CLIFTON HEIGHTS

COLORFUL

REFLECTION

BRIGHT

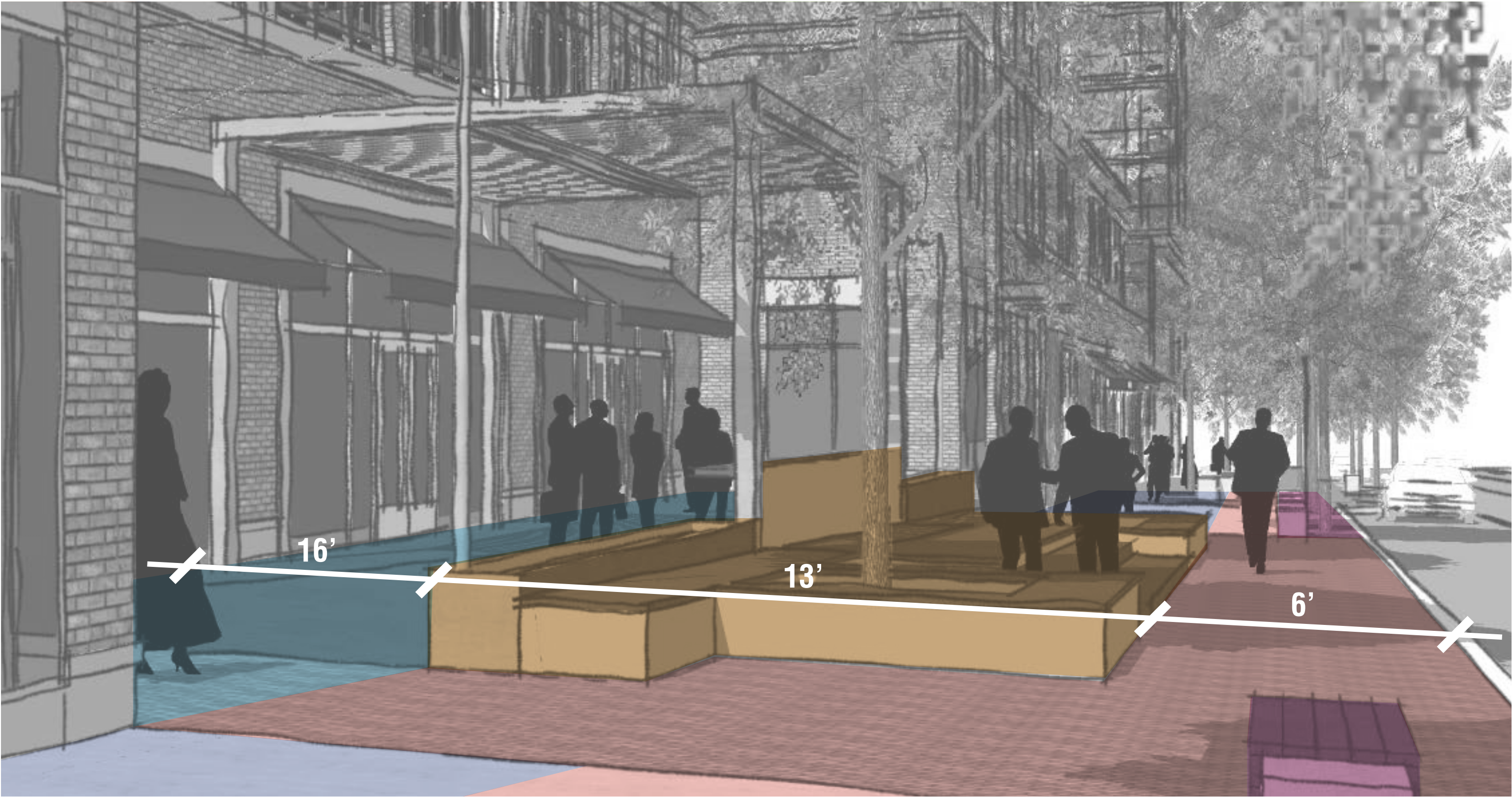
RESPITE

OASIS



# x4 Spatial Definition

- AMENITY
- SIDEWALK
- DINING
- RETAIL/SEATING
- PUBLIC PLAZA



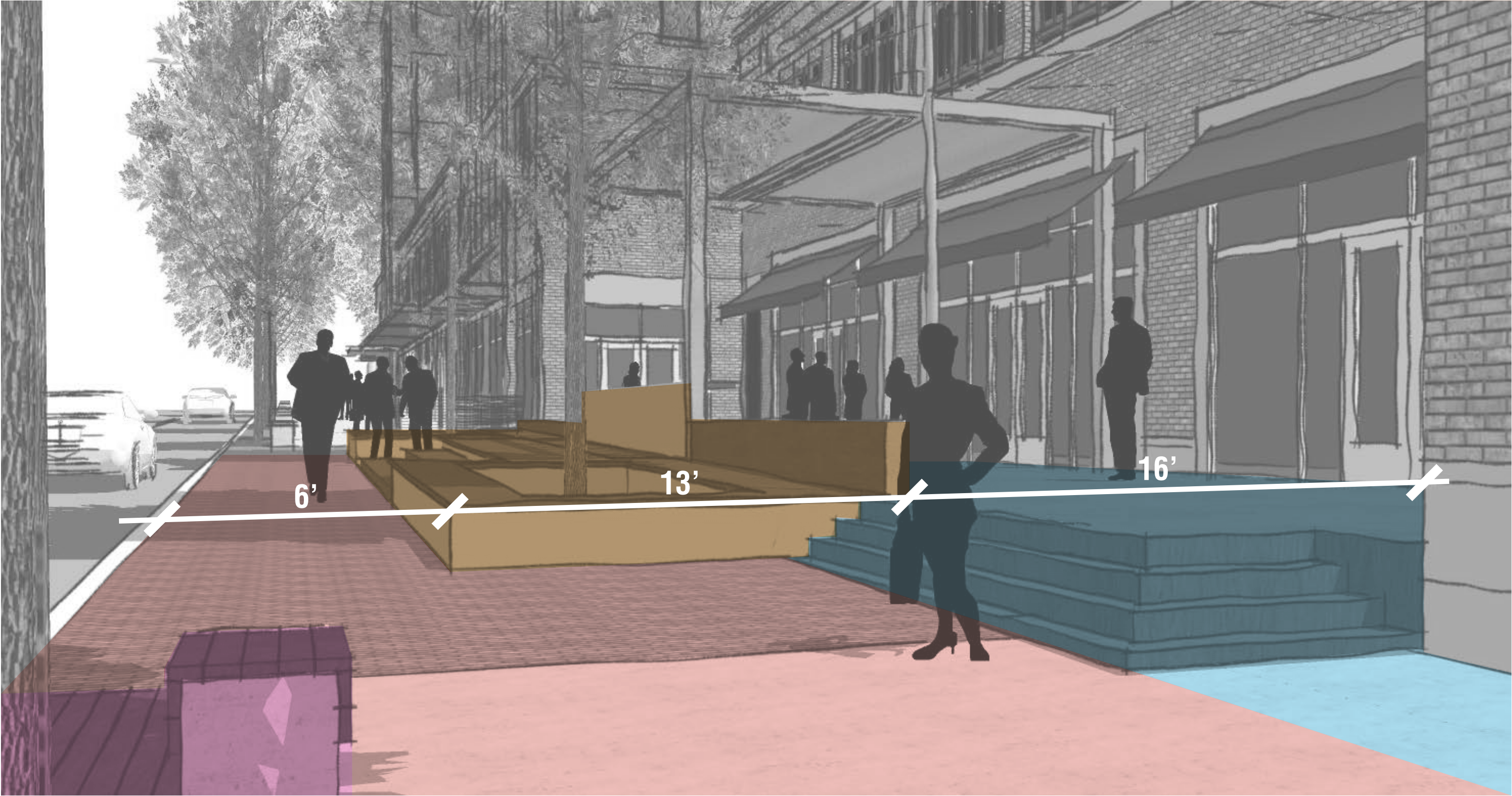
## THE DISTRICT AT CLIFTON HEIGHTS

- COLORFUL
- REFLECTION
- BRIGHT
- RESPITE
- OASIS



# x4 Spatial Definition

AMENITY    SIDEWALK    DINING    PUBLIC PLAZA



## THE DISTRICT AT CLIFTON HEIGHTS

COLORFUL    REFLECTION    BRIGHT    RESPITE    OASIS



# Salvaged Items



## THE DISTRICT AT CLIFTON HEIGHTS

COLORFUL

REFLECTION

BRIGHT

RESPITE

OASIS