

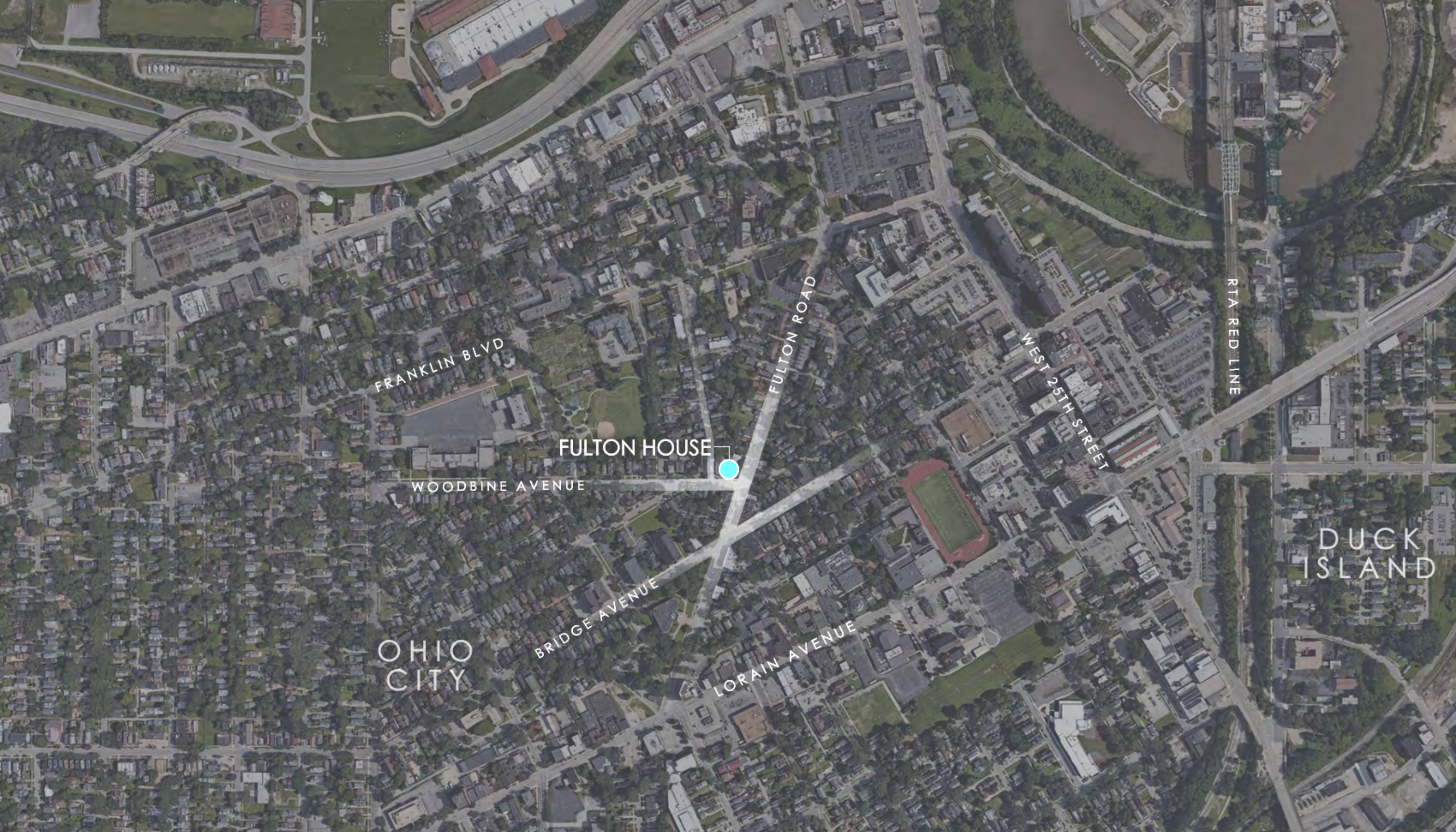
FULTON HOUSE

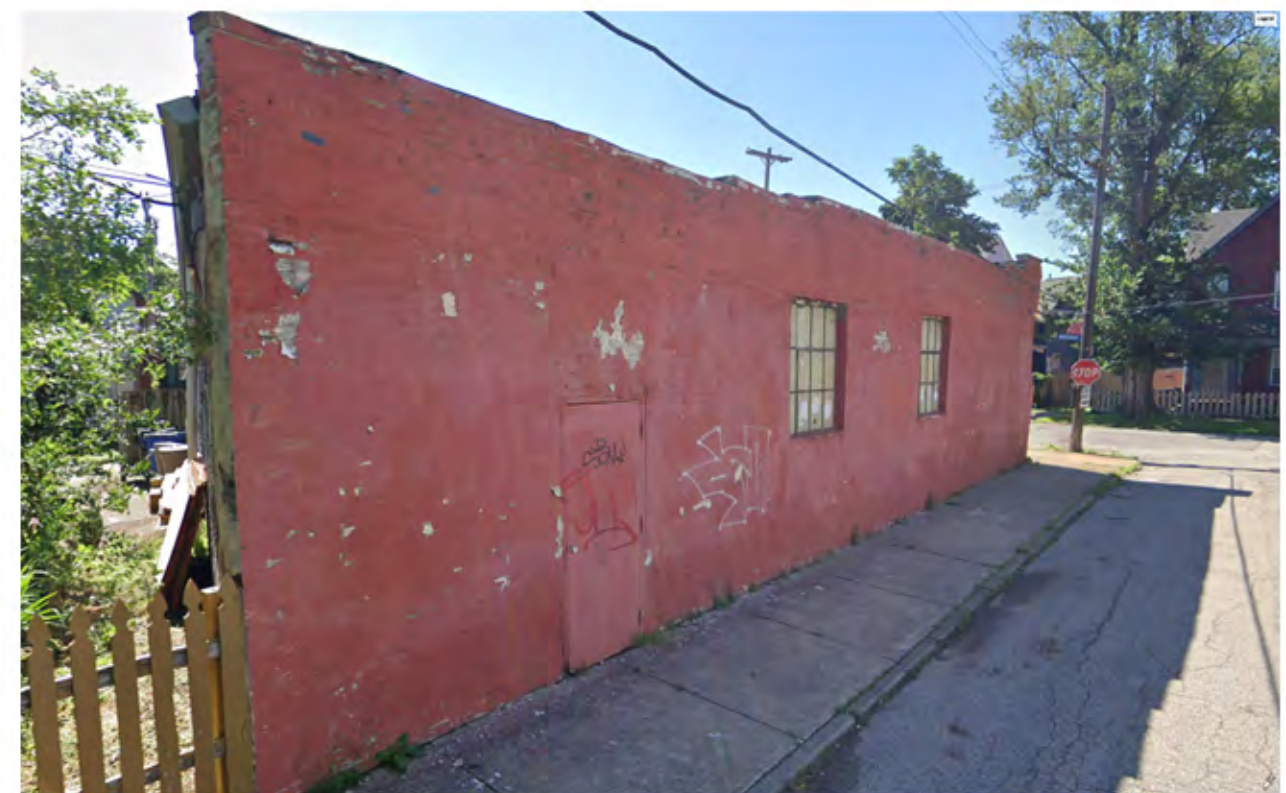
1828 Fulton Road - OHIO CITY
Schematic Review Package - March 18, 2021



LOCAL DEVELOPMENT PARTNERS, LLC

HH HORTON HARPER
ARCHITECTS





Existing Structure
1828 Fulton Road



1981



1937

1828 Fulton Rd.

S
-307
9-14-37

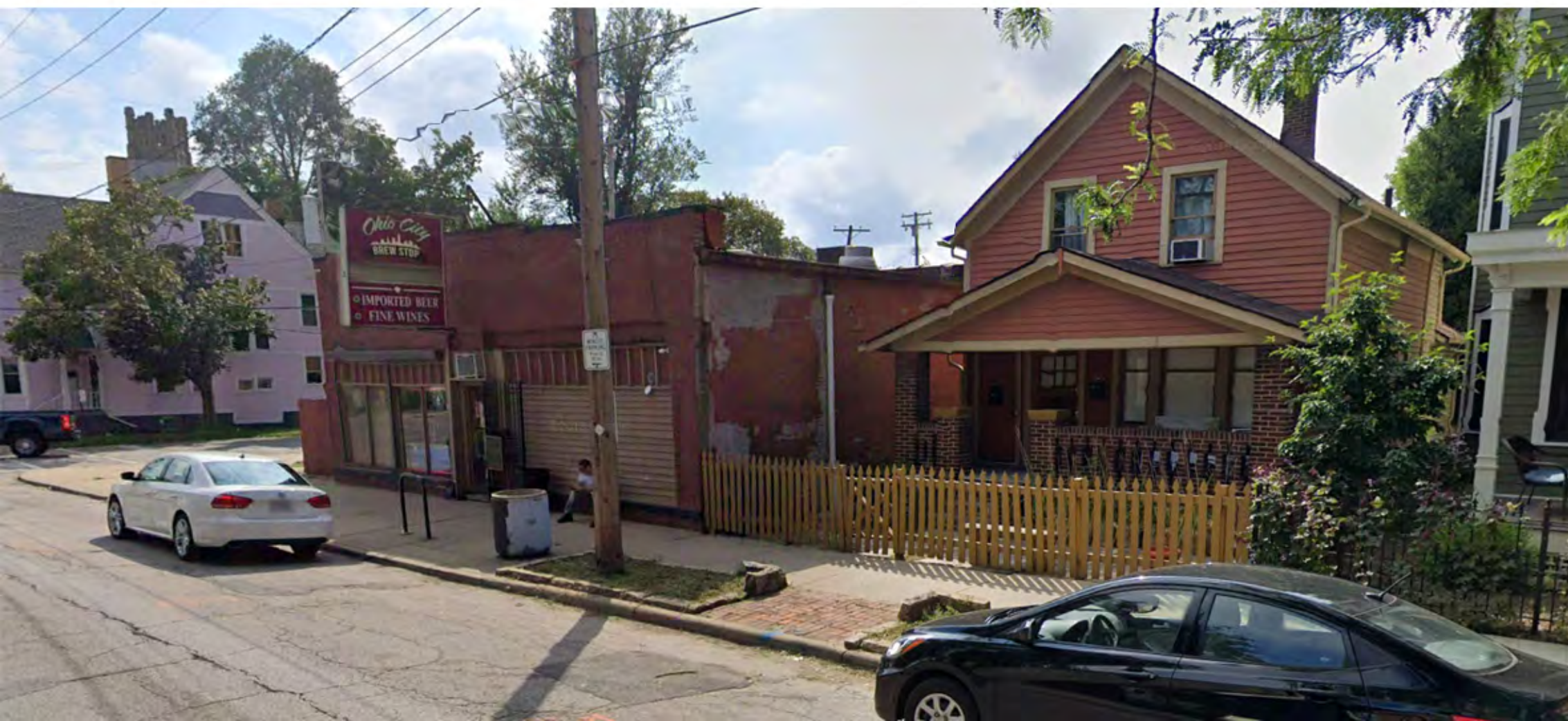


1965

Rear of
1822 Fulton Rd
AKA 3100-18 Woodbine Ave

65-S-421
10-5-65

Existing Structure
Historic Imagery



Context Imagery
Surrounding Neighborhood



Context Imagery
Surrounding Neighborhood



Context Imagery
Surrounding Neighborhood



Context Imagery
Corner Structures of Significance



Context Imagery
Corner Buildings of Significance



Neighborhood Buildings of Scale Distances
NTS N^



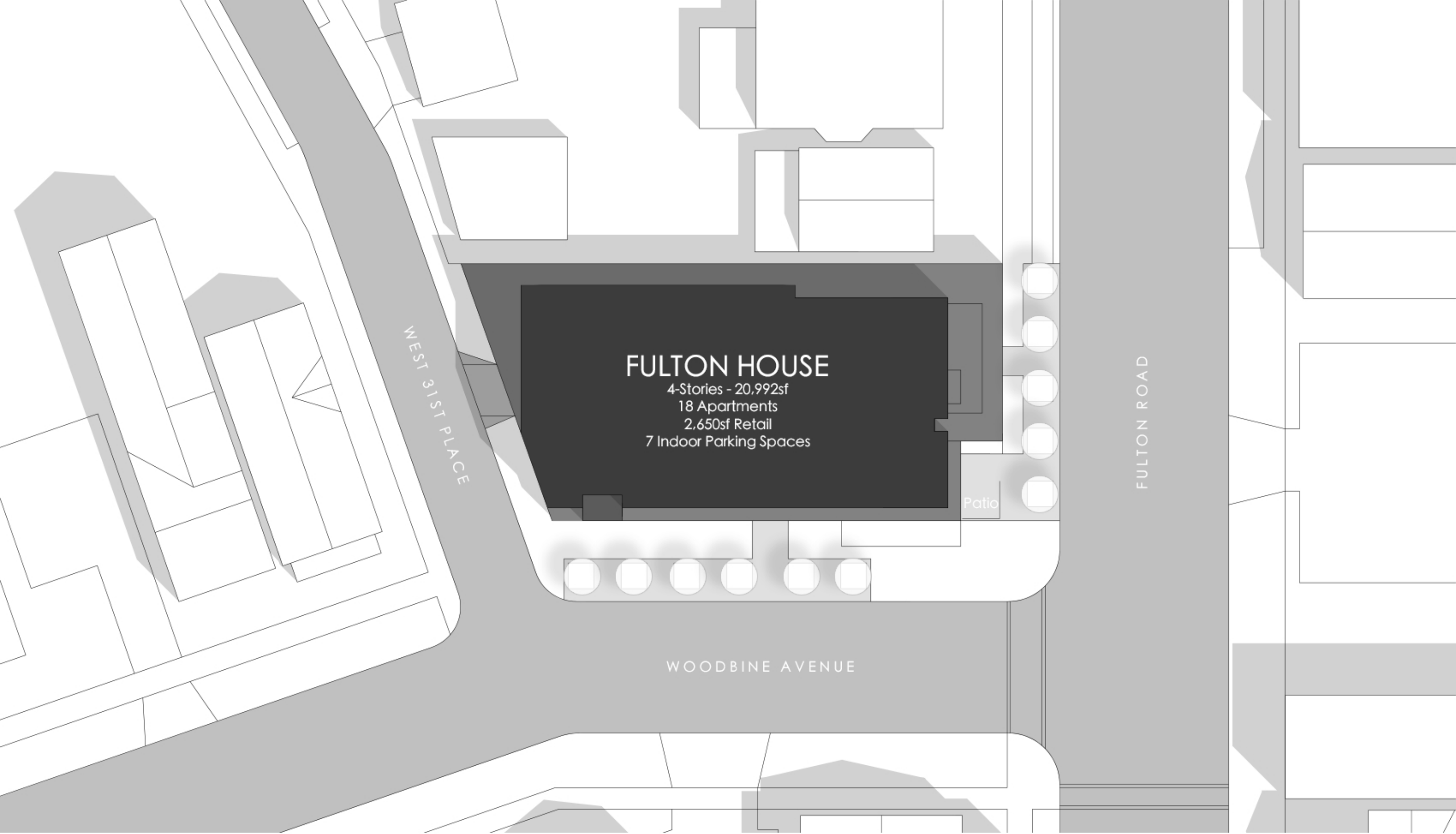
1828 Fulton Road
Existing 1-Story Masonry Structure
Retail and Warehouse
6,397sf

WEST 31ST PLACE

FULTON ROAD

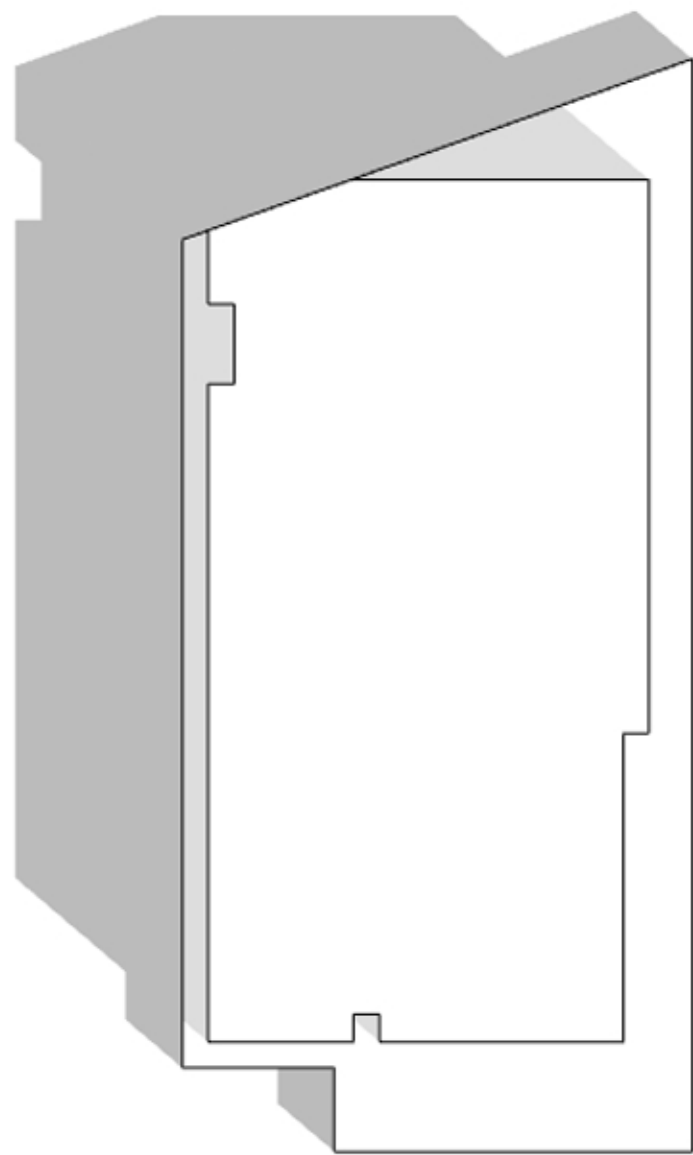
WOODBINE AVENUE

Existing Site Plan
Scale: 1" = 20' NN

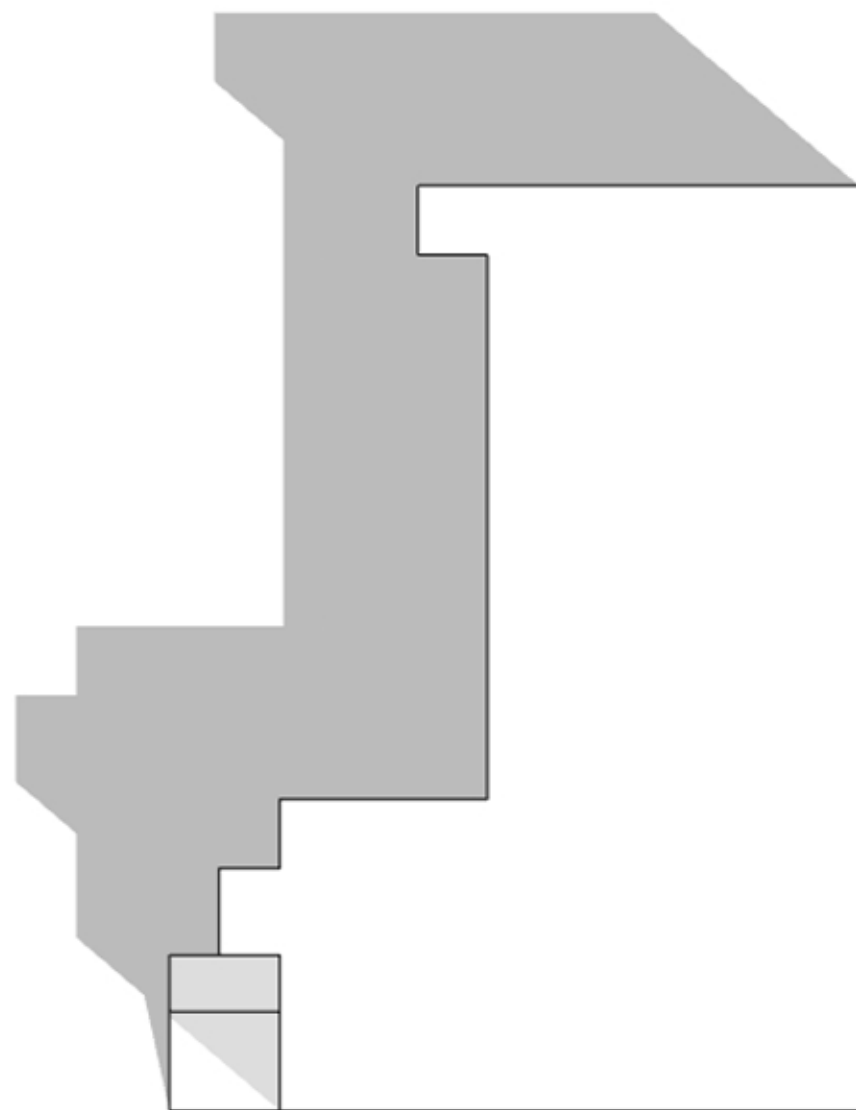


Proposed Site Plan
Scale: 1" = 20' NN

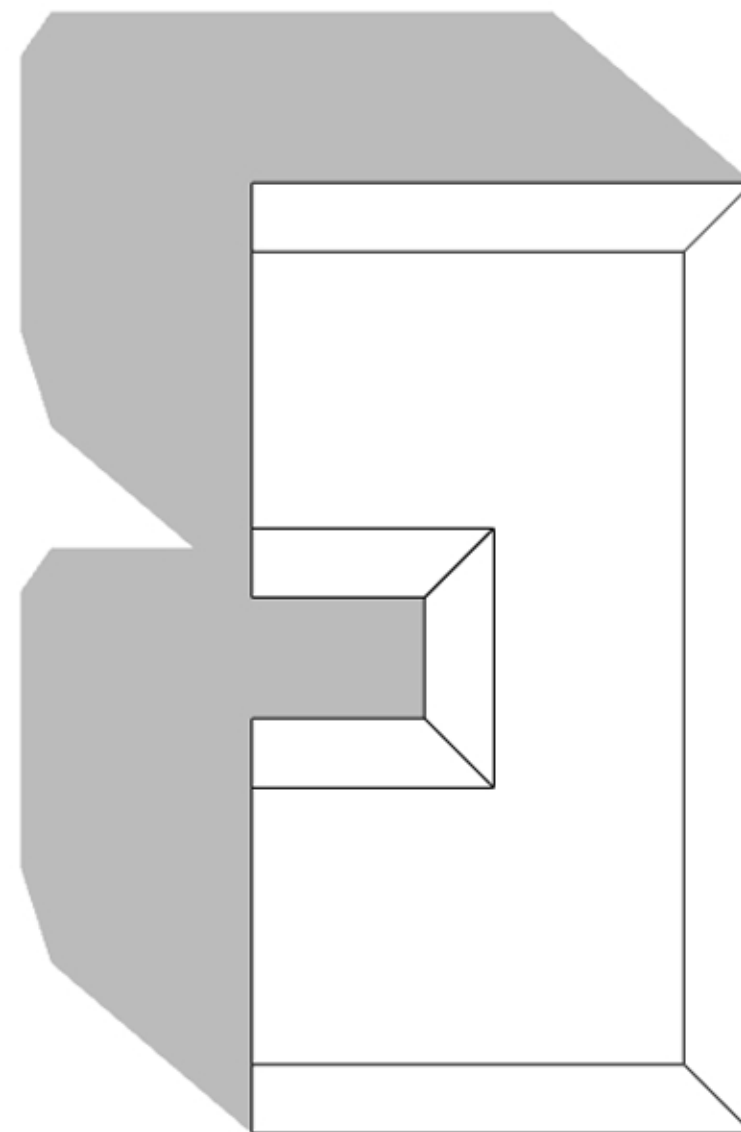




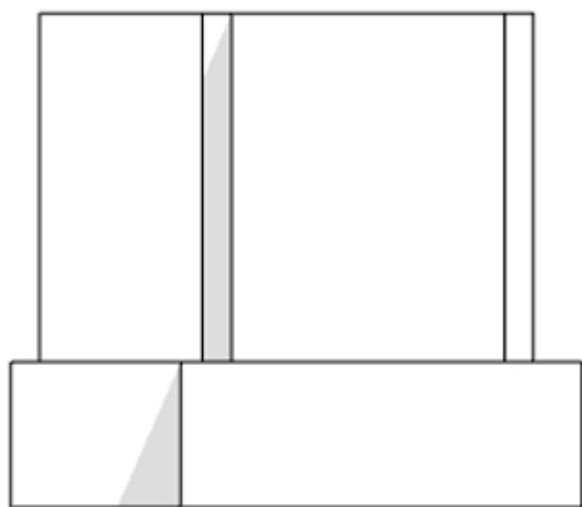
FULTON HOUSE



WEST SIDE COMMUNITY HOUSE



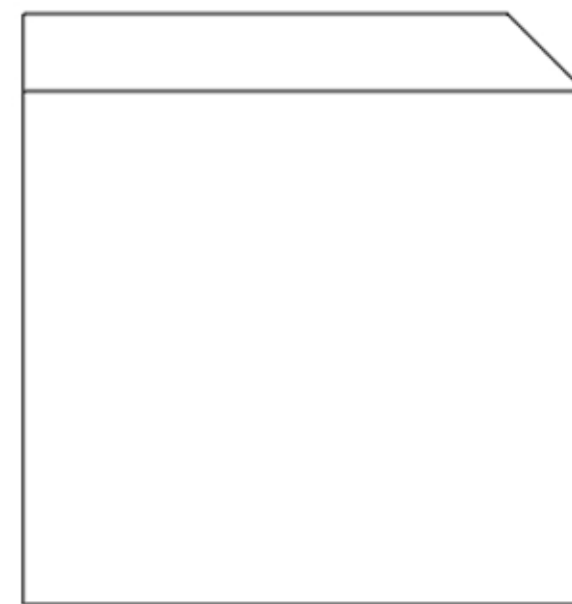
WEST VIRGINIA BUILDING



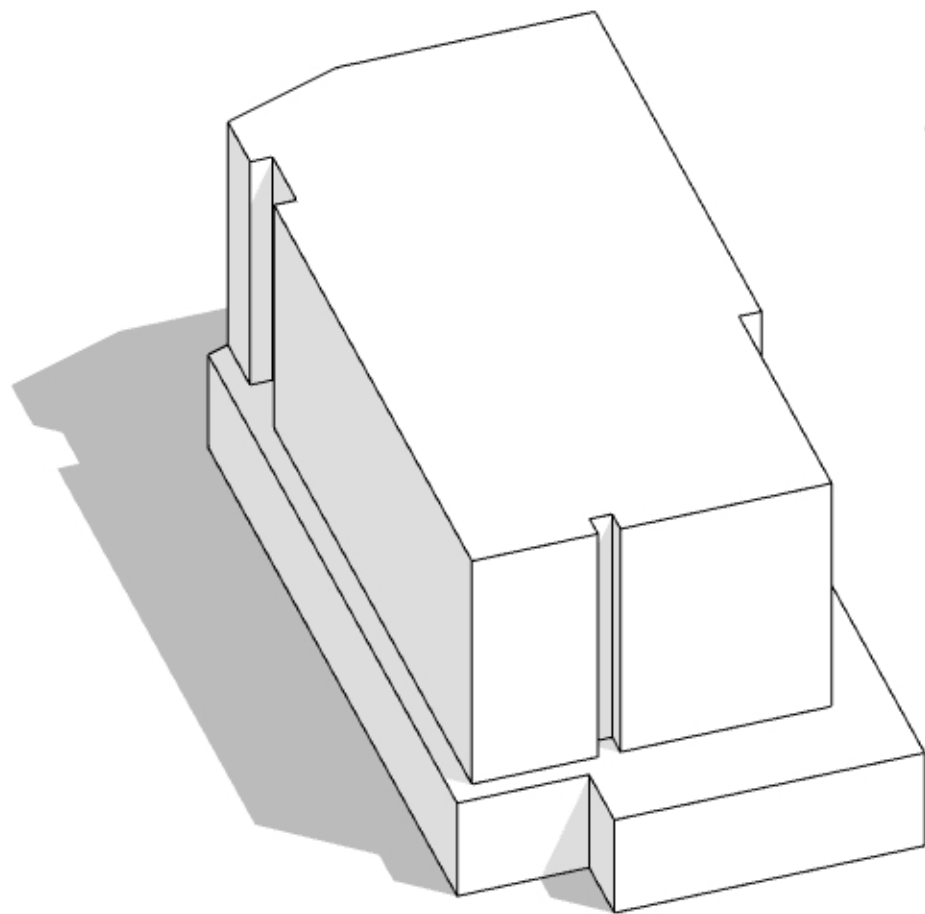
FULTON HOUSE - 49' TALL



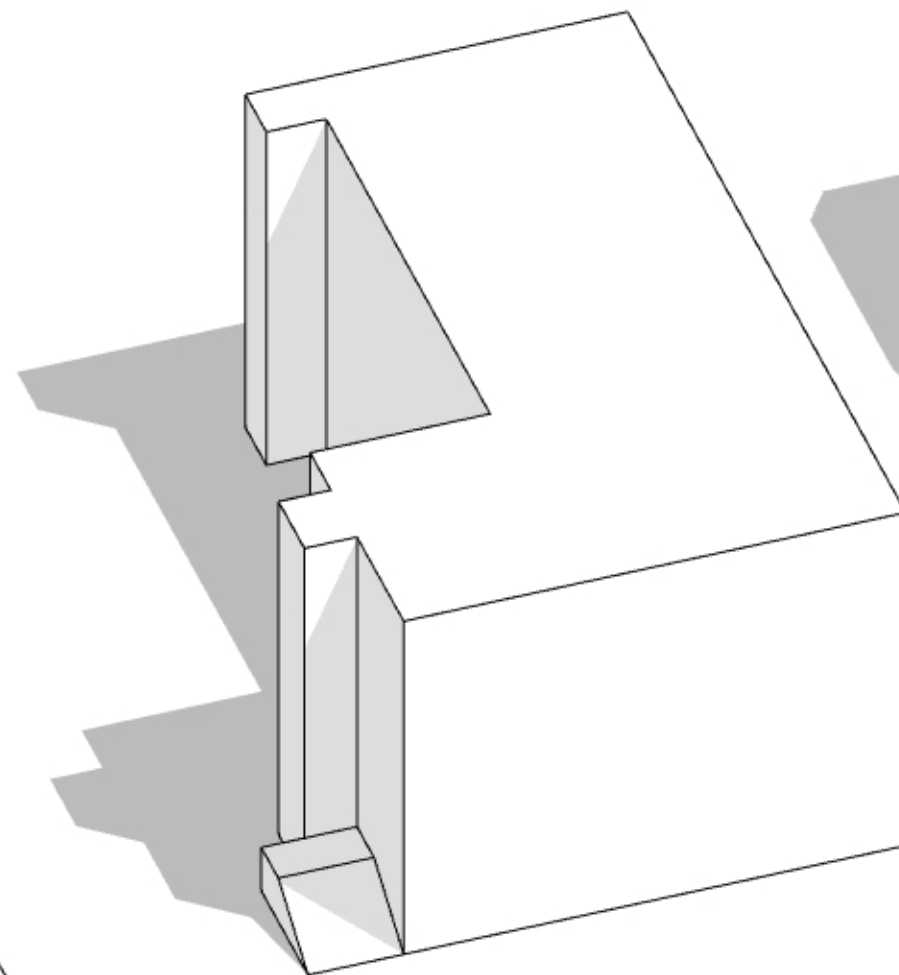
WEST SIDE COMMUNITY HOUSE - 54' TALL



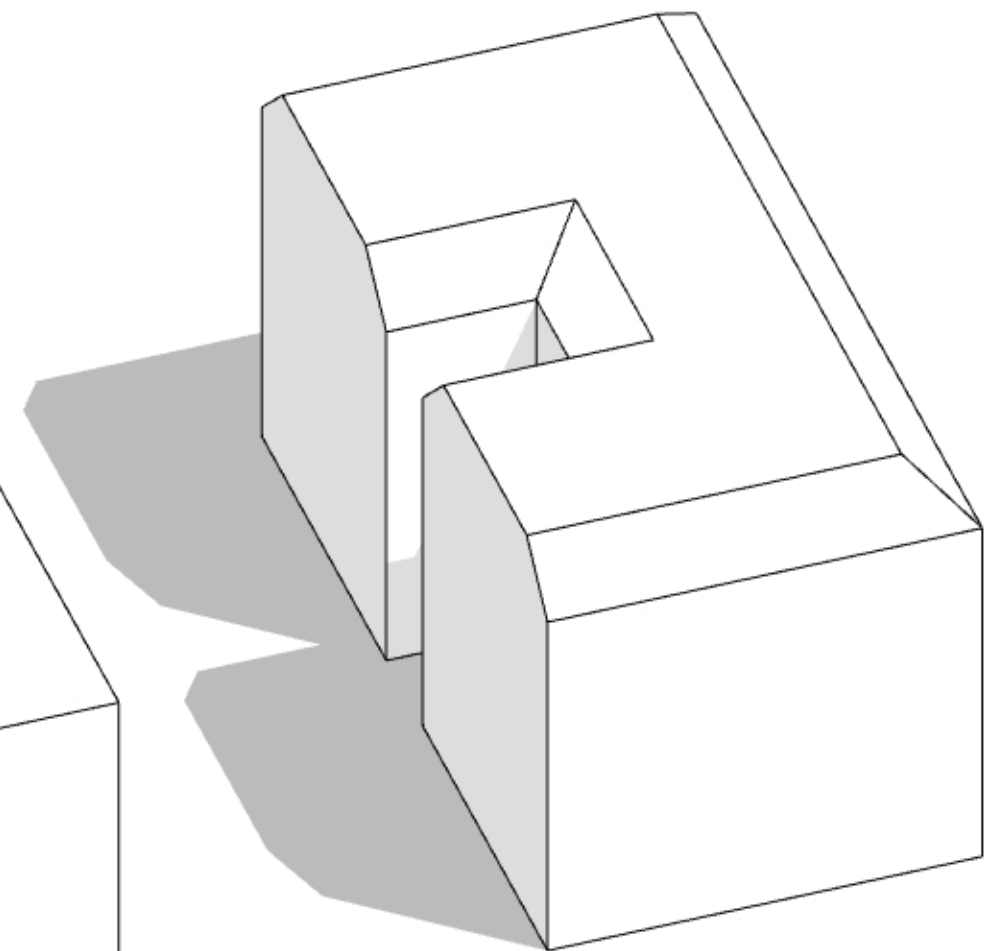
WEST VIRGINIA BUILDING - 62' TALL



FULTON HOUSE - 49.5' TALL



WEST SIDE COMMUNITY HOUSE - 54' TALL



WEST VIRGINIA BUILDING - 62' TALL



View 1
Looking Northwest from Fulton Road



View 2
Looking North from Fulton Road



View 3
Looking South from Fulton Road



View 4
Looking North from Woodbine Avenue



View 5
Corner Patio



View 6
Looking South on West 31st Place



View 7
View south on Fulton



View 8
View to NW from Fulton Sidewalk



Thermory Spruce, Vivid Light Silvered - Horizontal & Vertical Orientations

New & Existing Brick Painted Black (paint color TBD)



Aluminum Panel (1st fl. rcoping)

Aluminum Window Trim

Cast Stone



Bronze Anodized Aluminum Railings



Med. Bronze Windows & Storefront

Material Palette

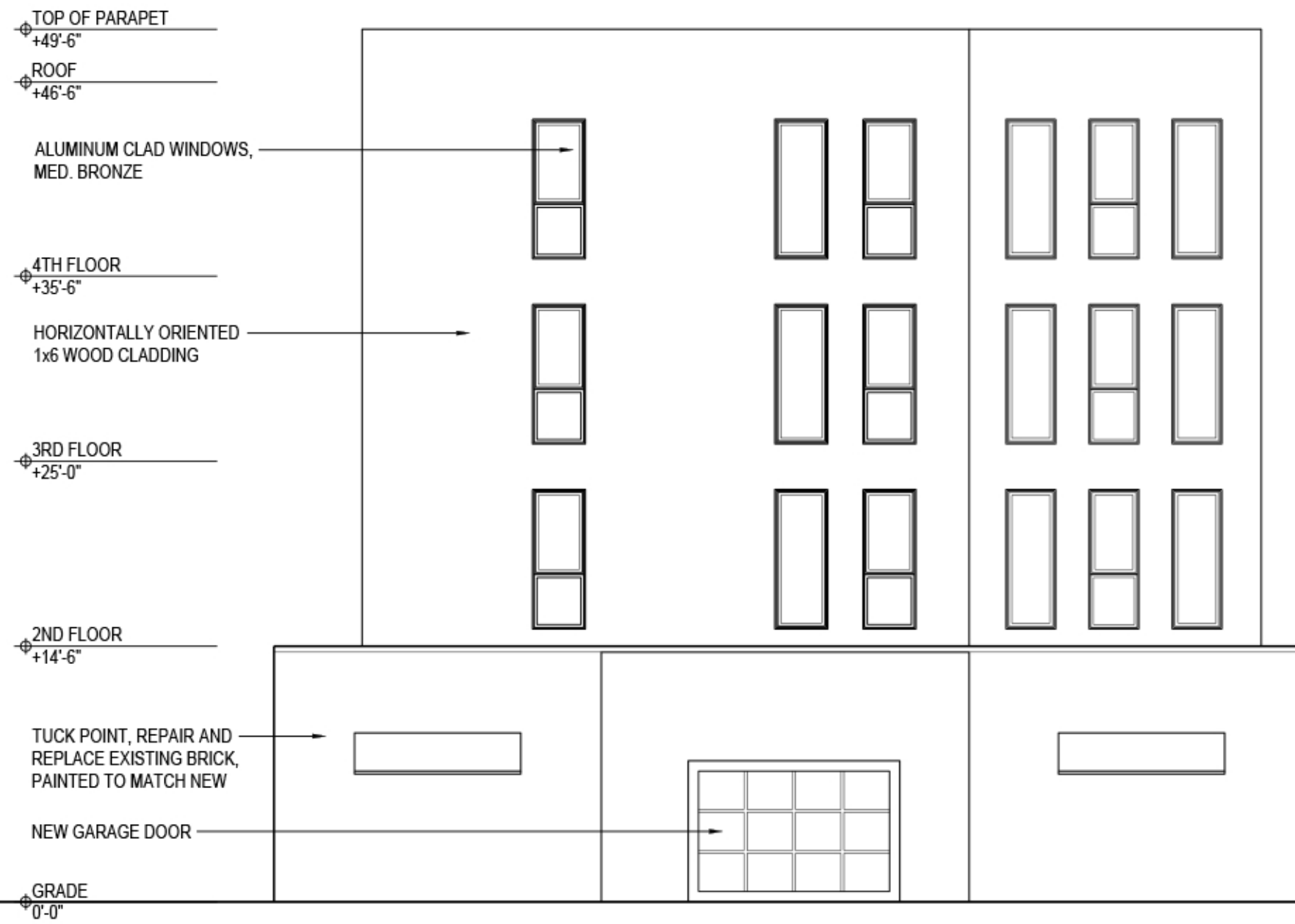




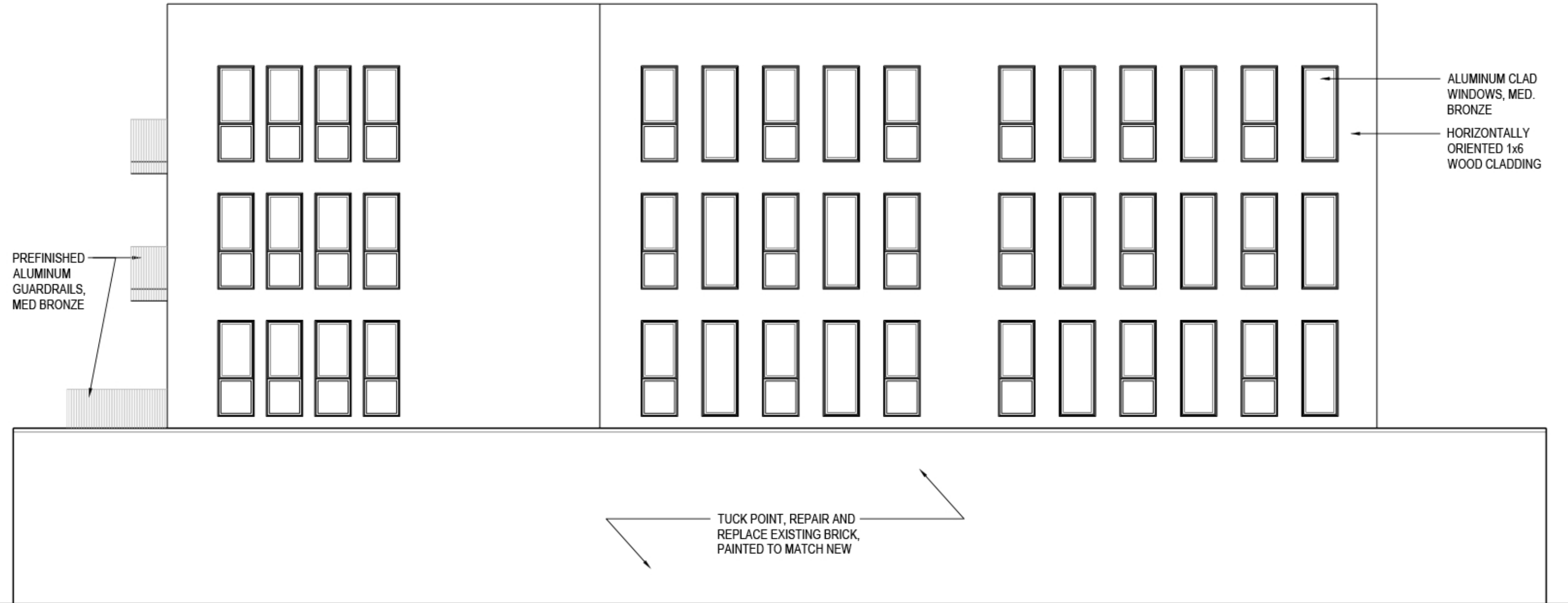
East Elevation (Fulton Road)
Scale: 1/8" = 12"



South Elevation (Woodbine Avenue)
Scale: 1/8" = 12"



West Elevation (West 31st Place)
Scale: 1/8" = 12"



North Elevation
Scale: 1/8" = 12"