



Alignment Study Fact Sheet:

Sonoran Desert Drive alignment has been planned and designated as a major arterial roadway since 1987. This roadway is an important east-west alignment between Interstate 17 and northeast Phoenix. The City of Phoenix Street Transportation Department has engaged the services of T.Y. Lin International to perform a roadway alignment study for the future of Sonoran Desert Drive.

The Study Includes:

- Study of existing and future development;
- Research impacts and connection to the Sonoran Preserve including: equestrian/wildlife linkages, pedestrian accommodations, and scenic corridors;
- Evaluate of major drainage and wash crossing locations;
- Evaluate Sonoran Desert Drive / Dove Valley Road intersection alternatives;
- Determination of right-of-way easement footprint necessary to construct the roadway ;
- Traffic analysis at the intersection of Sonoran Desert Drive and Dove Valley Road;
- Public and Municipal outreach and involvement;
- Evaluate locations and geometrics for connector roads within study area;
- Alignment Study Report

Study Partners:

- City of Phoenix
- Arizona State Land Department
- North Gateway Village Planning Committee
- Phoenix Mountain Preservation Council
- Phoenix Sonoran Preserves and Mountain Parks / Preserves Committee
- Area Residents / Property Owners

Study Schedule:

- Begin Project Study - March 2013
- Public Open House #1 - May 2013
- Public Open House #2 - July 2013
- Public Open House #3 - October 2013
- Final Alignment Study Complete - November 2013

Contact Us:

Email: www.sonorandesertdrivestudy.com

Public Information Contact, Lori Pearce: **480-281-1506**



Project Area History Overview:

Sonoran Desert Drive has been planned as an important east-west alignment between I-17 and northeast Phoenix since 1987.

In 2003, the public involvement efforts to determine the alignment of the future Sonoran Boulevard from I-17 to Cave Creek road included public open houses, presentations to City boards, commissions, and Village Planning Committees.

In 2004, a Corridor Draft Study to determine the alignment of Sonoran Boulevard and Sonoran Desert Drive was completed; this study characterized the roadways as scenic corridors.

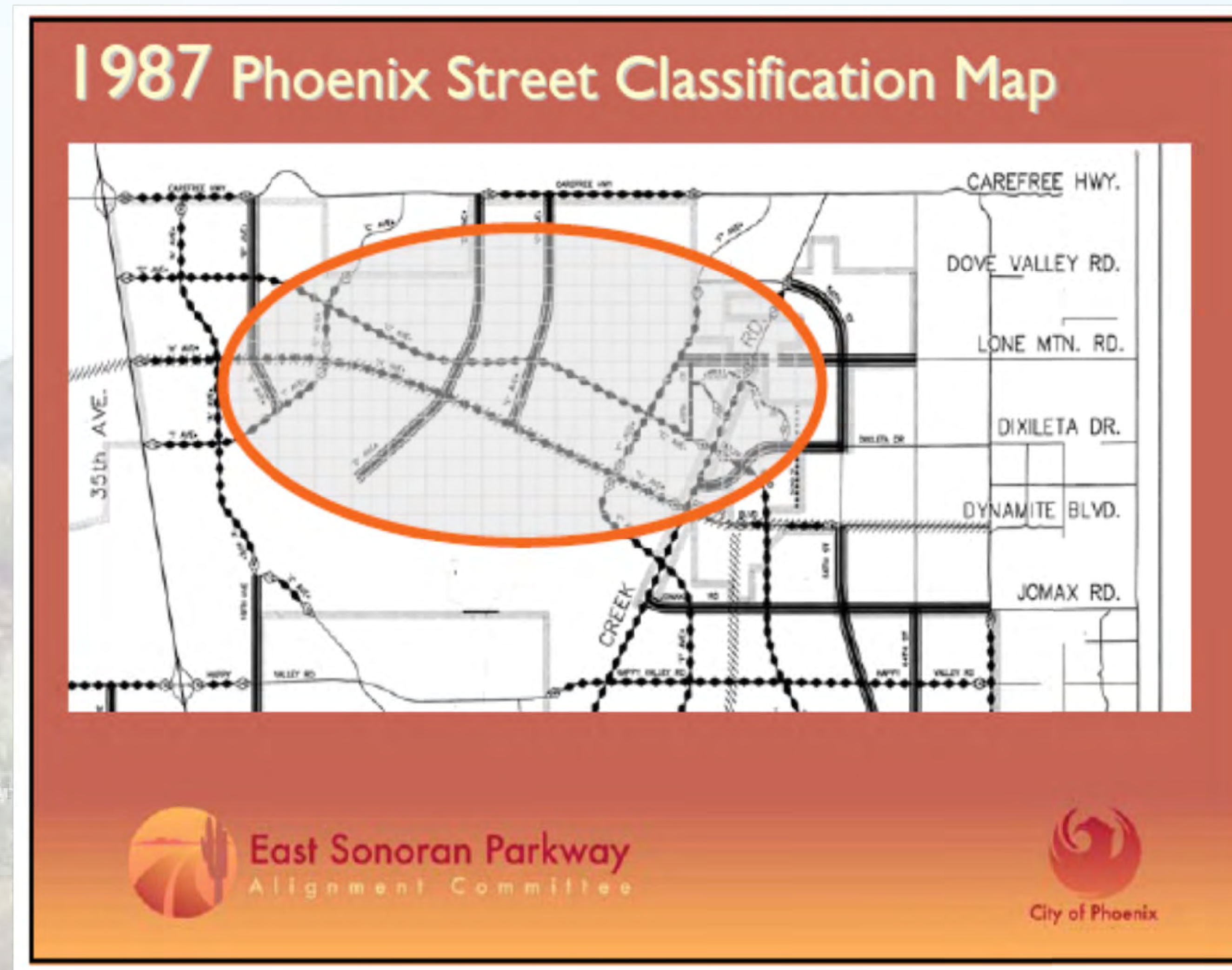
In 2006, City Council approved the Sonoran Boulevard alignment and connections (currently named Dove Valley Road on the west end and Sonoran Desert Drive on the east end).

Construction of Dove Valley Road / Sonoran Desert Drive roadway began in October 2010. Public Involvement efforts included public meetings, Village Planning Committee meetings, and a Solutions Based Forum comprised of community, parcel/development, and municipal stakeholders.

In July 2011, Phoenix City Council approved a recommendation by the solutions based forum stakeholders to expedite the Sonoran Desert Drive Alignment Study. The stakeholders agreed that Sonoran Desert Drive and associated connections, pathways, and the required right-of-way should be determined in advance of future development so as to allow the construction of the roadway expeditiously when deemed necessary.

In March 2013, TY Lin International was provided with Notice to Proceed to complete the Sonoran Desert Drive Alignment Study.

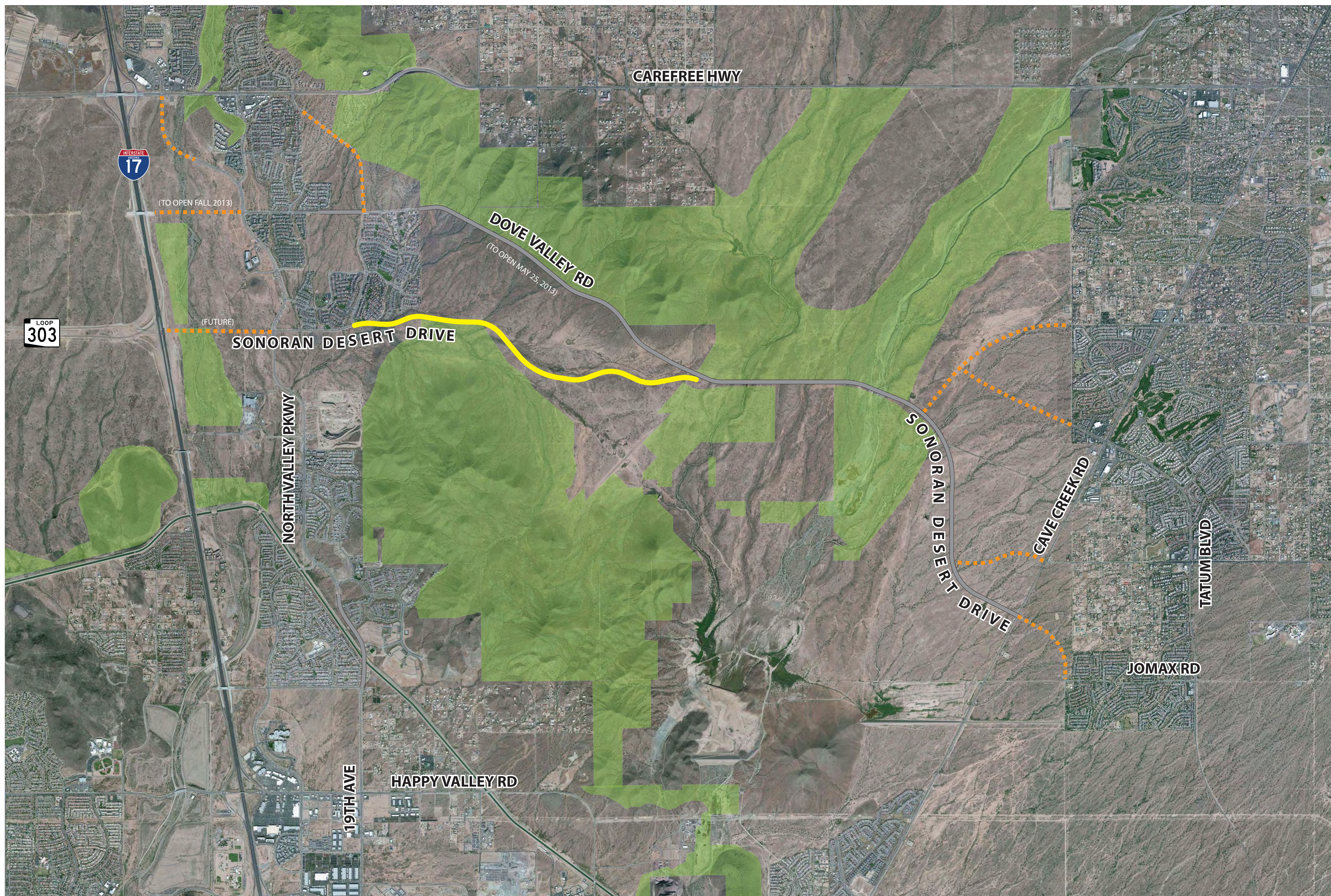
Completion of the new Dove Valley Road / Sonoran Desert Drive roadway currently under construction is scheduled to open May 25th 2013.





SONORAN DESERT DRIVE ALIGNMENT STUDY

PALOMA PARKWAY TO DOVE VALLEY ROAD - ST85100350



SONORAN DESERT DRIVE

- Future Arterial
- Alignment Study Limits
- Sonoran Preserve



SONORAN DESERT DRIVE ALIGNMENT STUDY

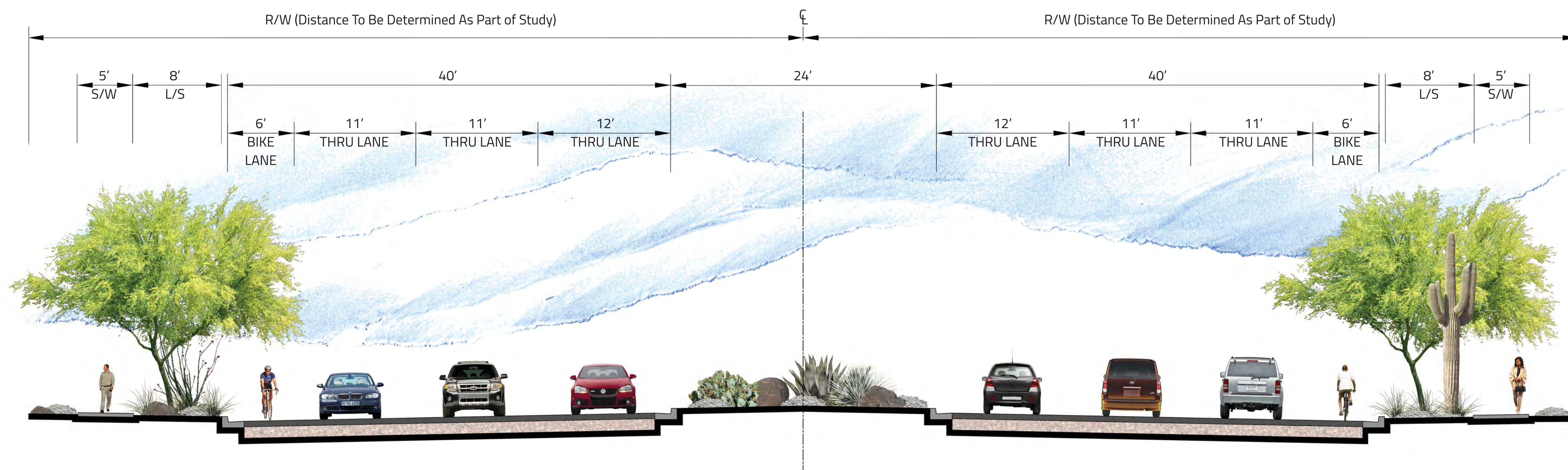
PALOMA PARKWAY TO DOVE VALLEY ROAD - ST85100350





SONORAN DESERT DRIVE ALIGNMENT STUDY

PALOMA PARKWAY TO DOVE VALLEY ROAD - ST85100350



Ultimate Sonoran Desert Drive Roadway Cross Section

