

Project Kick-off Meeting

September 16, 2019



GOODYCLANCY

AGENDA

Team and Steering Committee Introductions

Consultant Team Presentation: Project Goals, Themes, and Process

Steering Committee Discussion and Feedback

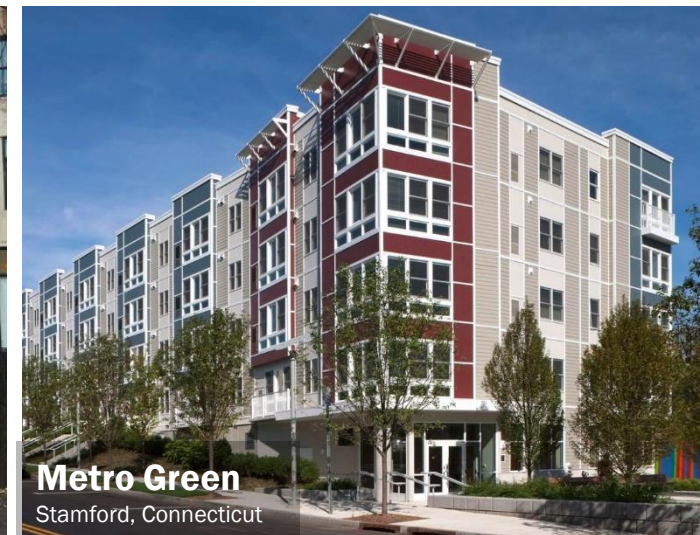
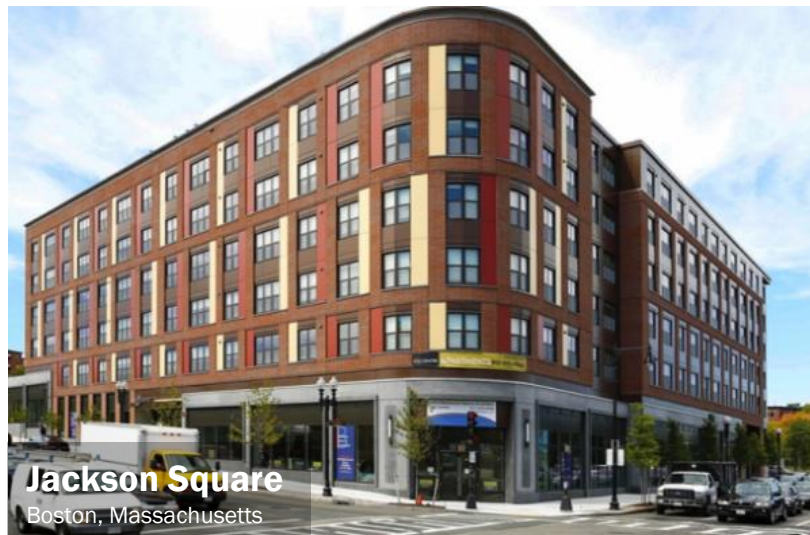
What is TOD in Manchester?



Successful TOD



Successful TOD



Who We Are:

- **Goody Clancy (Ben and Kathleen)**
 - Urban design, land use regulations, project management
- **CivicMoxie (Susan)**
 - Integrating with Manchester Connects, implementation
- **Nelson\Nygaard (Matt)**
 - Transit services, bike and pedestrian infrastructure, parking, and transportation demand management
- **Applied Economic Research (Russ)**
 - Understanding market demand for transit-oriented development
- **Tighe & Bond**
 - Civil engineering—environmental constraints, implementation



Planning Process

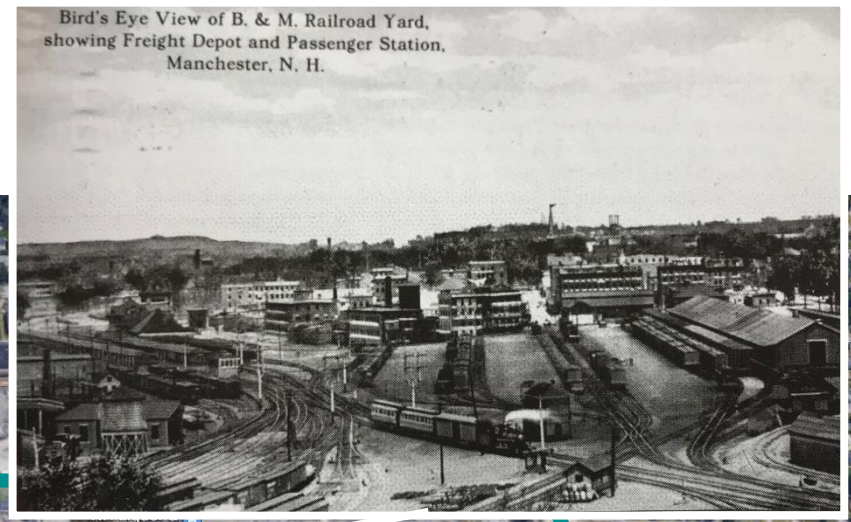
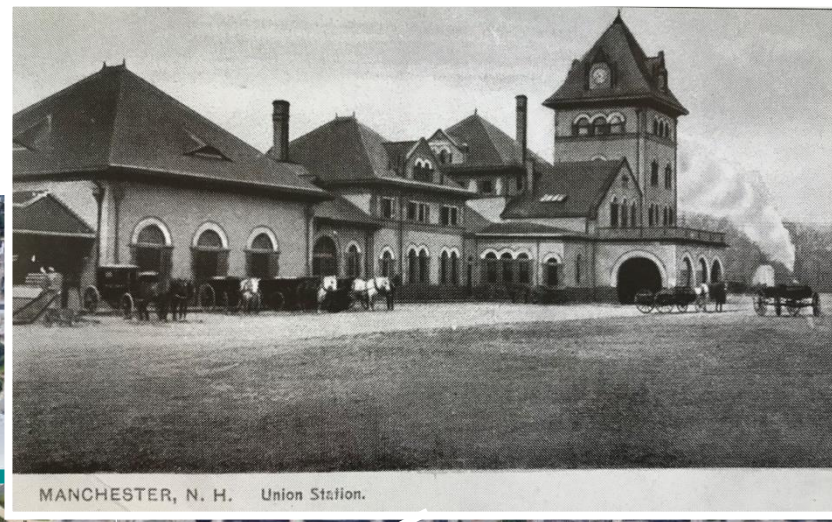
- **Research, assess, and analyze the TOD Study Area provide a foundation for planning our future**
 - Transportation and infrastructure: bike/ped, transit, parking
 - Market conditions
 - Mapping of environmental and historic constraints
- **TOD Scenarios: alternatives that offer choices**
 - Evaluate and identify preferred alternative
 - Implementation: capital improvements plan, financial plan, municipal land use changes
- **Draft and Final Plan**
 - Public feedback, comment, and adjustment
 - Take to City for adoption, used by SNHPC and others in pursuing funding opportunities for capital improvements



Study area



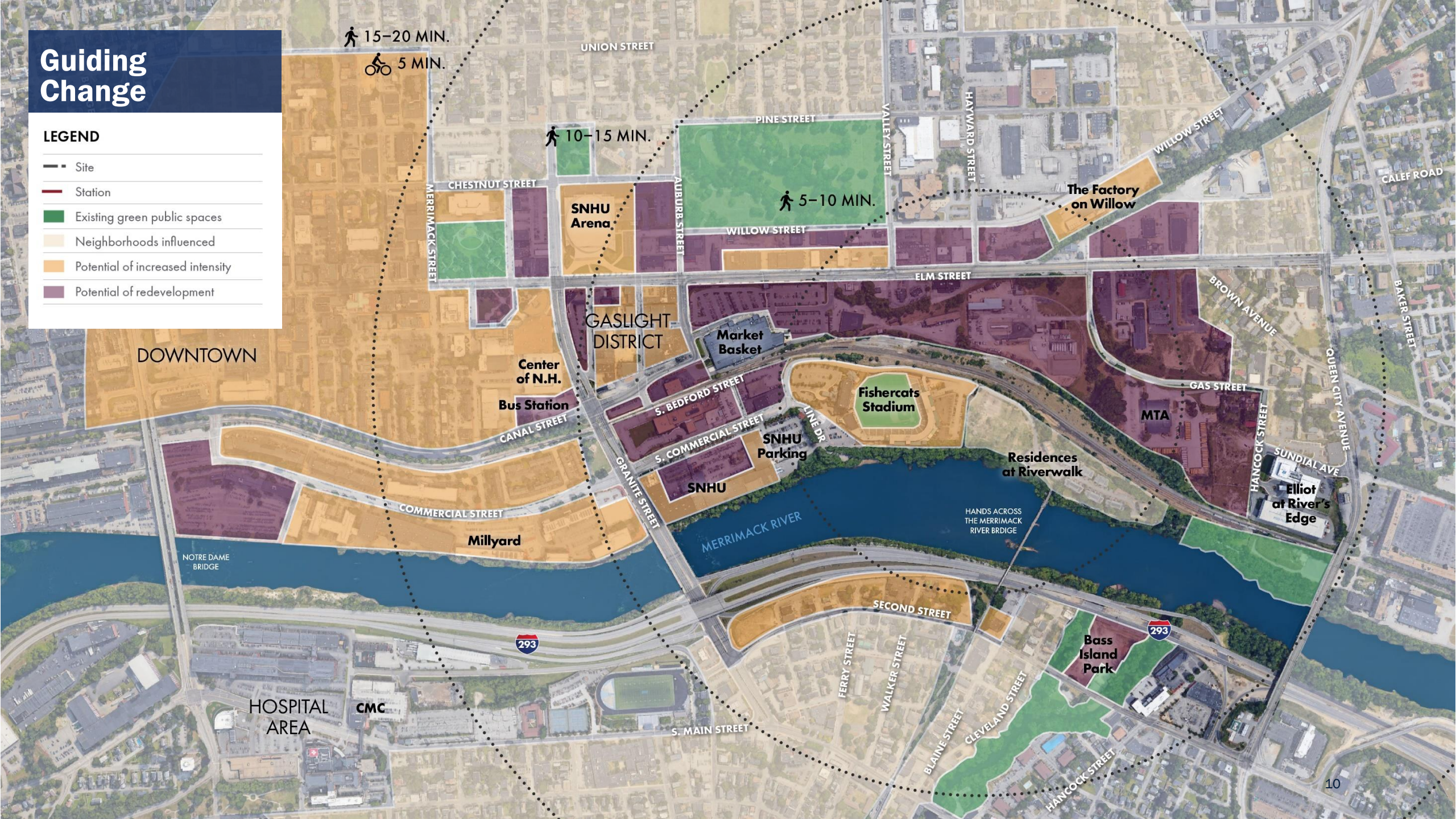
Study area



Guiding Change

LEGEND

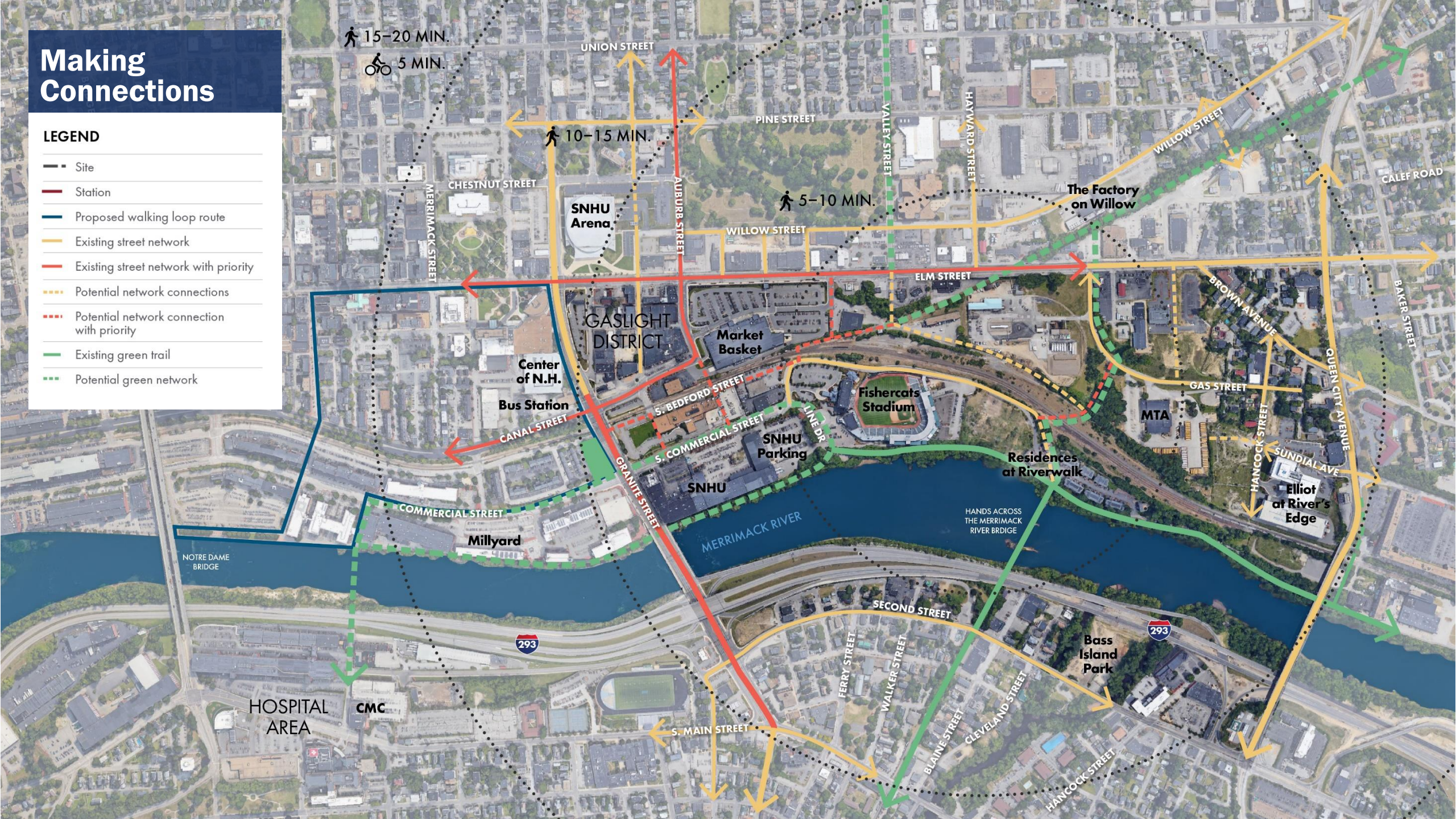
- Site
- Station
- Existing green public spaces
- Neighborhoods influenced
- Potential of increased intensity
- Potential of redevelopment



Making Connections

LEGEND

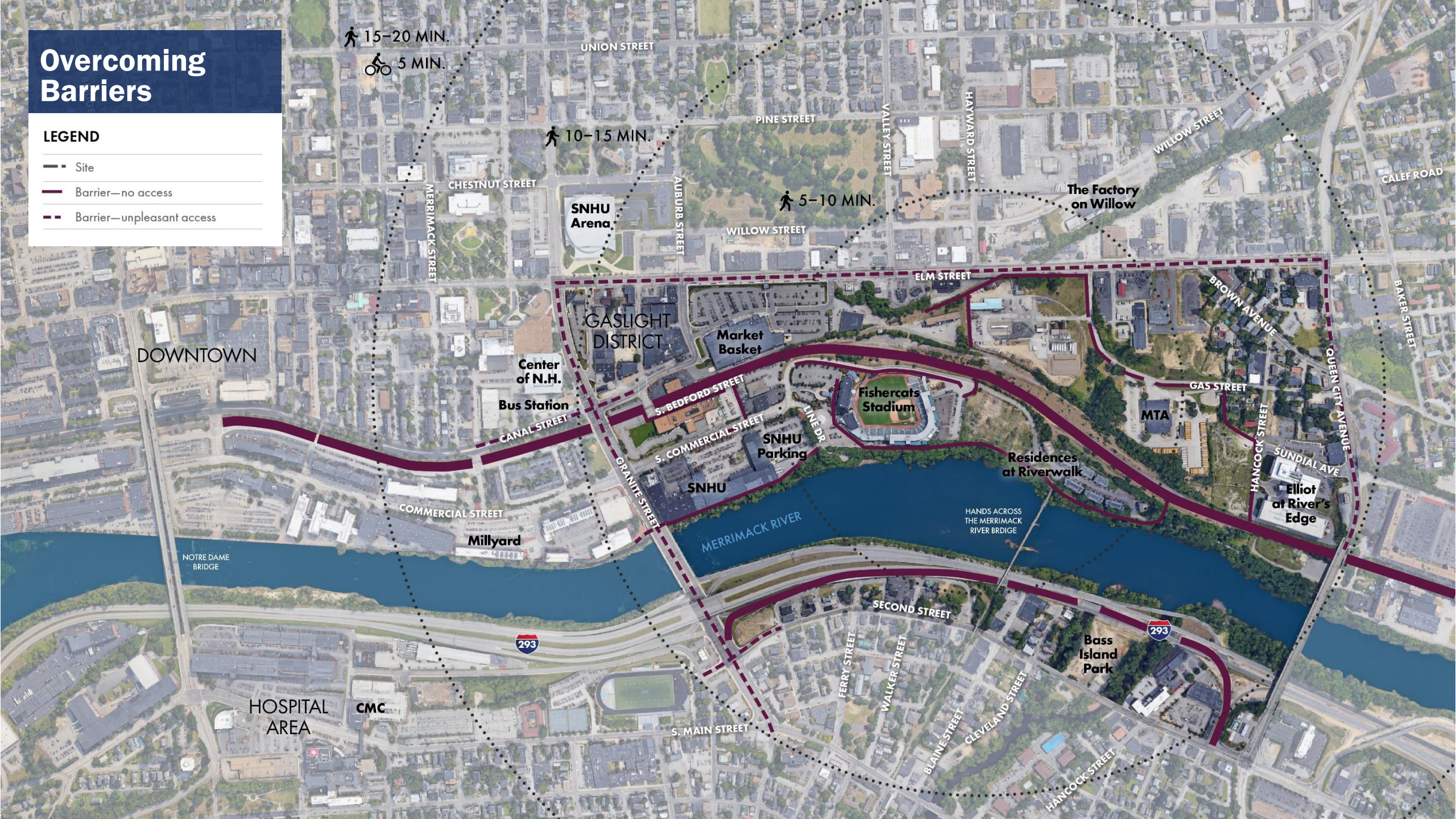
- Site
- Station
- Proposed walking loop route
- Existing street network
- Existing street network with priority
- Potential network connections
- Potential network connection with priority
- Existing green trail
- Potential green network



Overcoming Barriers

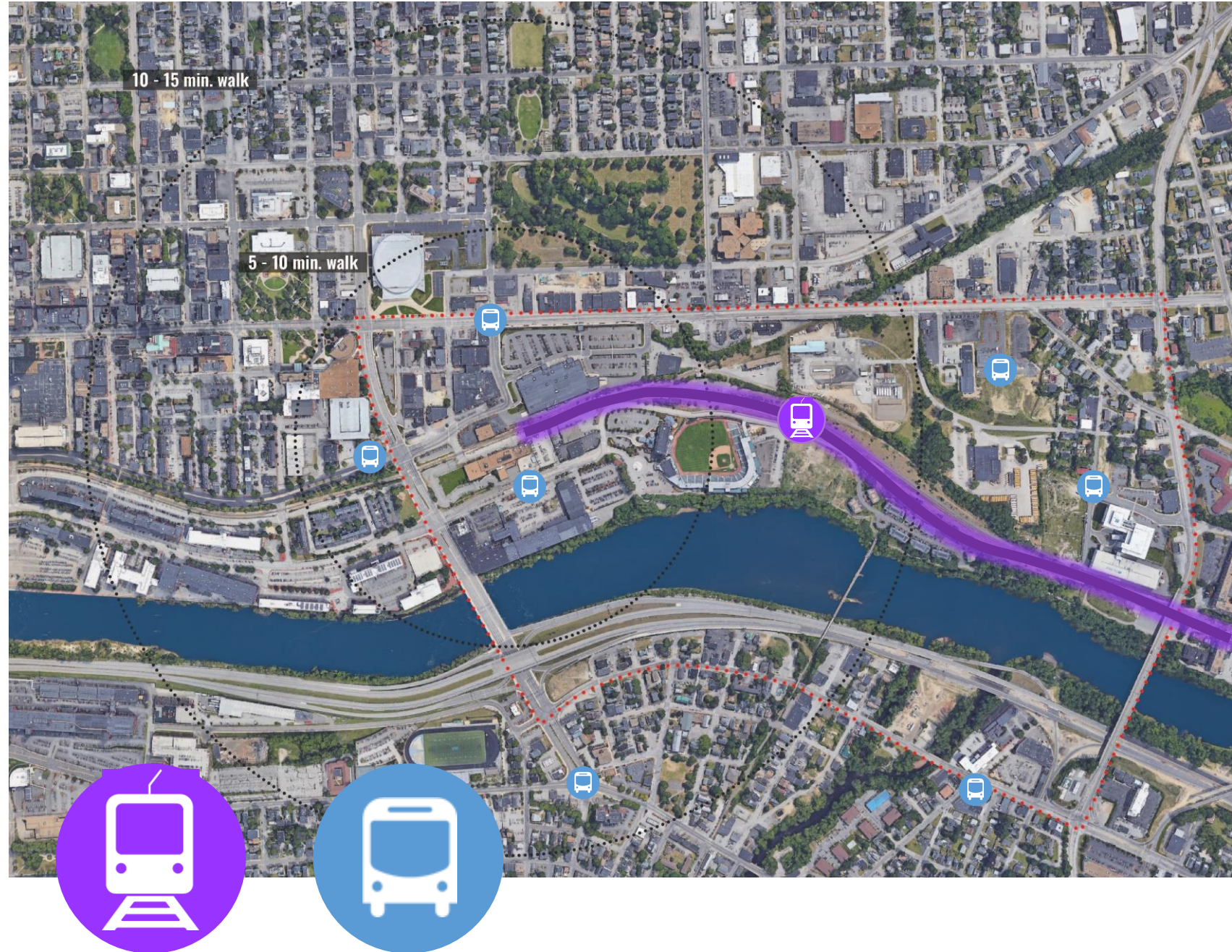
LEGEND

- Site
- Barrier—no access
- Barrier—unpleasant access



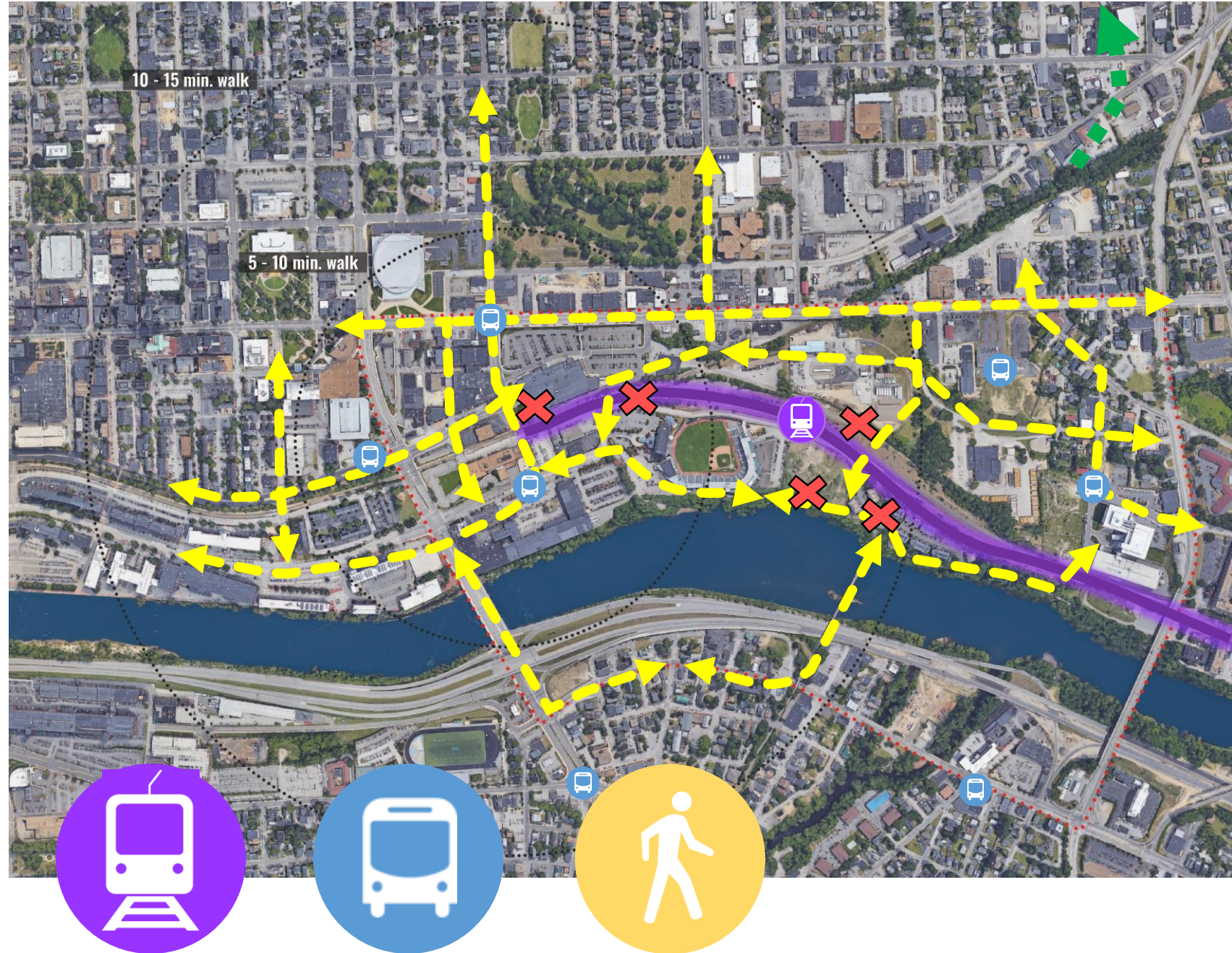
Make smart investments in transit

- Existing services
- Future services
- Connecting modes for transfers



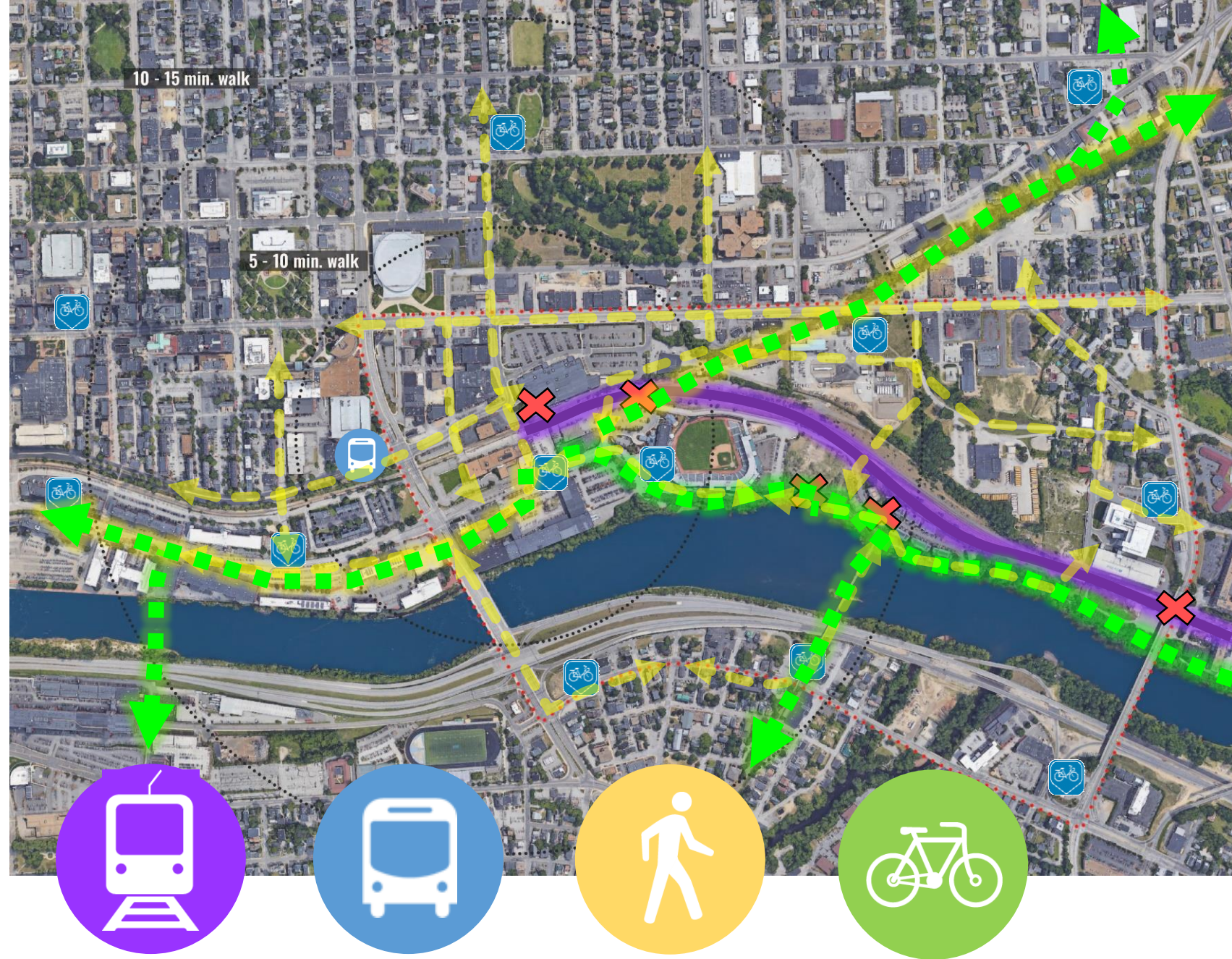
Prioritize excellent pedestrian infrastructure

- Connectivity
- Accessibility
- Crossing the tracks



Build on key bike connections

- First/last mile
- Recreation and trail-oriented development
- Innovative mobility



Design for parking as an opportunity, not an obstacle

- District-wide and shared strategies
- Park once and walk
- Access and management strategies



Getting strategic sites and infrastructure ready for development

- Robust public infrastructure
- Low density and layout of utilities allow flexibility
- Elevation changes present some redevelopment design challenges.
- Multiple environmental listings need further investigation:
 - brownfield sites
 - asbestos sites
 - environmental spill sites
 - underground storage tanks



Steering Committee Role

- Make this YOUR plan
- Help identify priority goals and issues for study
- Help choose most appropriate plan strategy
- Participate in advocating and taking action



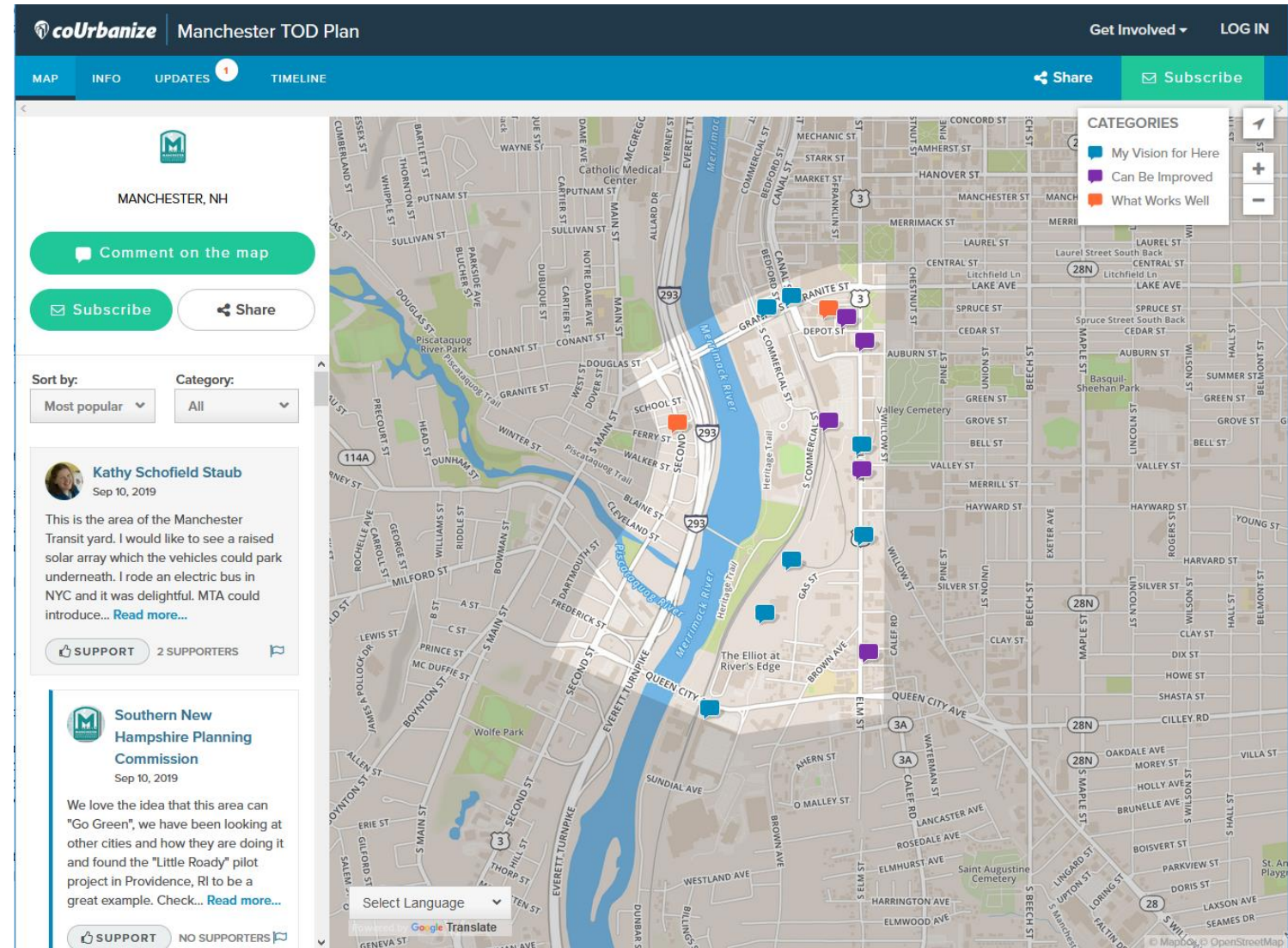
Our Meetings as a Steering Committee

- **Meeting #1 (Today!):** Launch project, identify key themes and resources
- **Meeting #2:** Priority issues, opportunities, and challenges
- **Meeting #3:** Preliminary scenarios for design, land use, multi-modal transportation and confirm charette content
- ***Saturday, January 11:*** *Tentative date for public workshop*
- **Meeting #4:** Preferred draft alternative and draft recommendations
- **Meeting #5:** Draft plan
- **Meeting #6:** Final plan



Public Engagement and Ground-Truthing

- Interactive website is live!
- Stakeholder interviews
- Public workshop
- Public meetings on draft plan, including with Board of Mayor and Aldermen



See you in the future!

