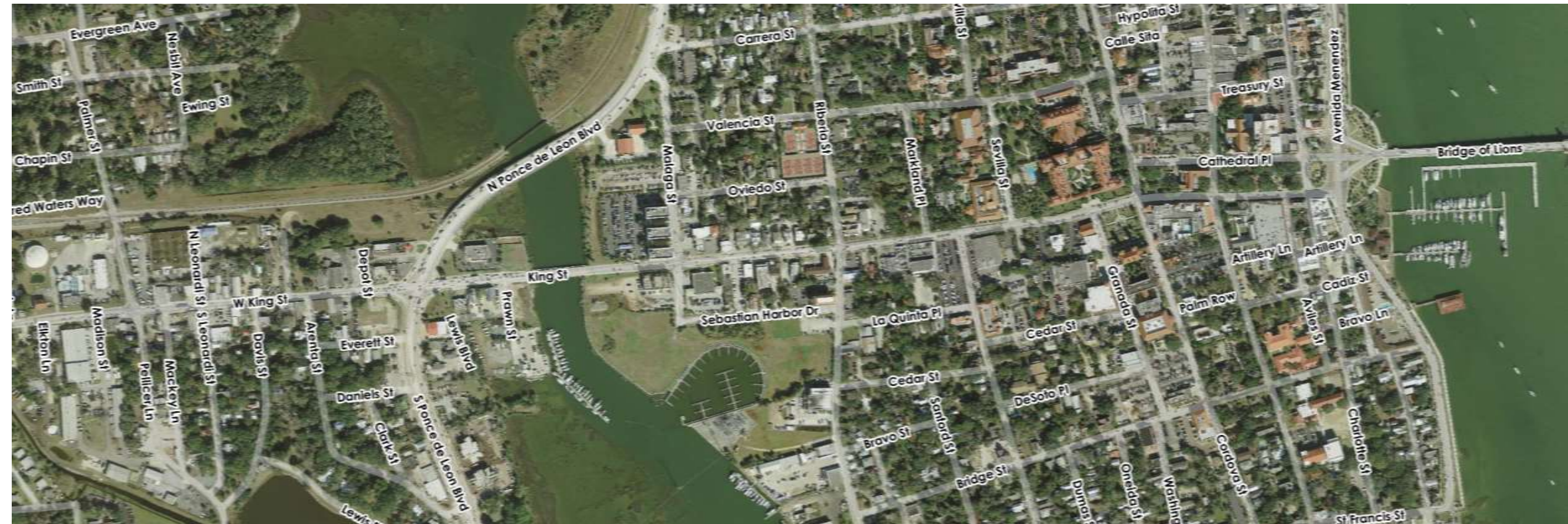


Workshop 3 | Segment A&B Visioning 4.11.19

COMPLETE KING STREET



Neighborhood Challenges:

- Speeding traffic
- Lack of sidewalks
- Disconnected from Downtown
 - Poor street condition
 - Stormwater management

A

Neighborhood Challenges:

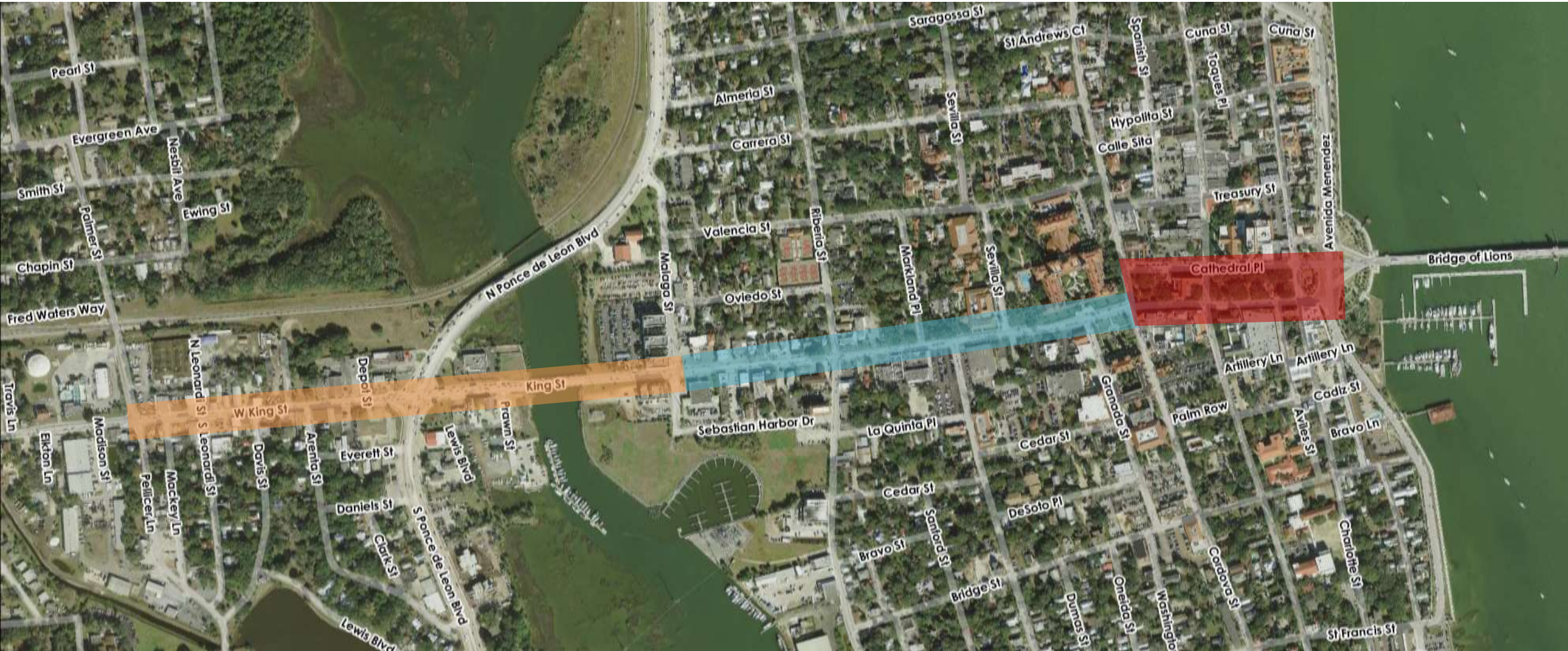
- Limited mobility options for students
- Poor street condition
 - Curb cuts
 - Stormwater management

B

Neighborhood Challenges:

- Impacts of tour operators and events
- Poor street condition
 - Limited sidewalk widths

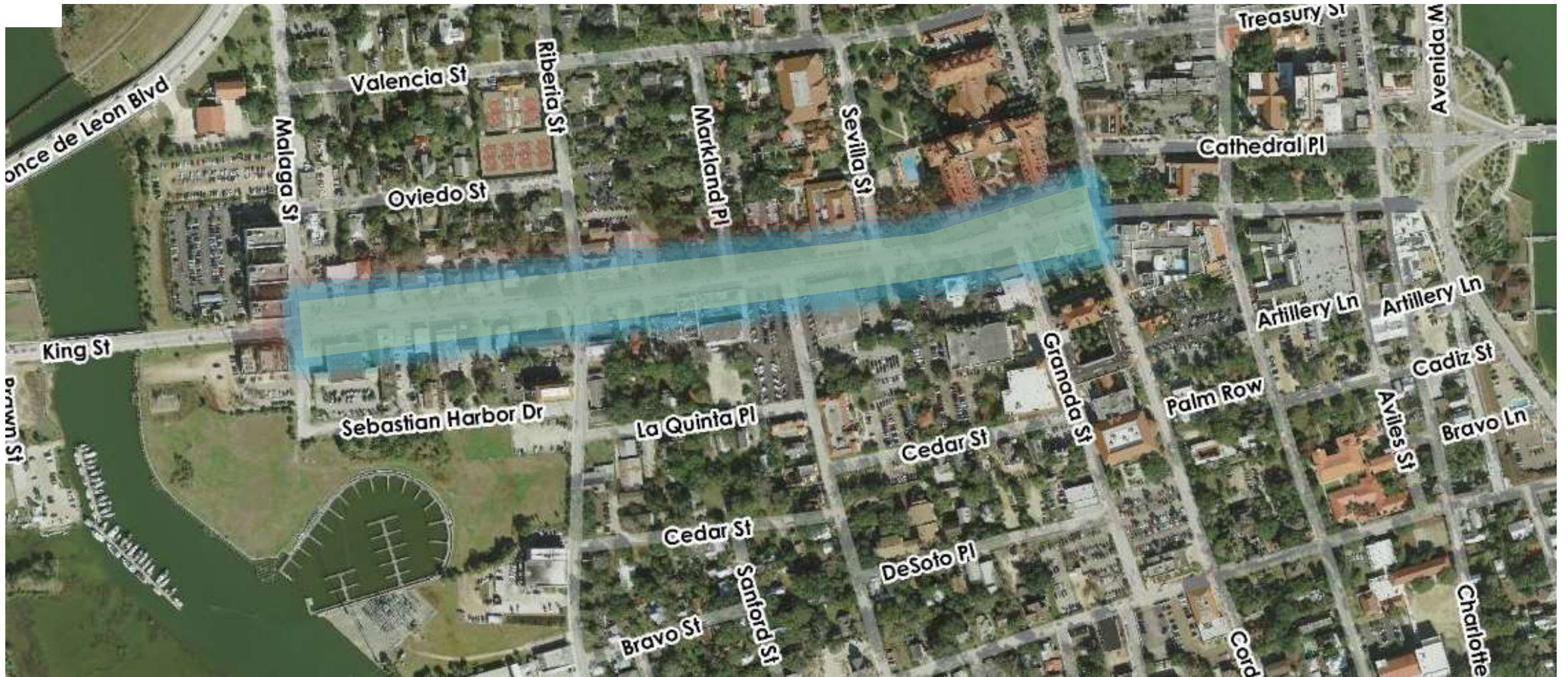
C



SEGMENT A OVERVIEW



SEGMENT B OVERVIEW



WEBSITE AND ONLINE ENGAGEMENT

Interactive Map



259
COMMENTS



1195
VISITORS

Sentiment



ST AUGUSTINE, FL

Comment on the map

Following

Share

Sort by:

Most popular

Category:

All



steve bridewell

Feb 2, 2019

Buy this abandoned property and put a small parking garage with a modern fun playground for kids; we don't have a single playground on the west side of US1. The wooden park is falling apart and the other... [Read more](#)

SUPPORT

8 SUPPORTERS



City of St. Augustine, FL

Feb 5, 2019

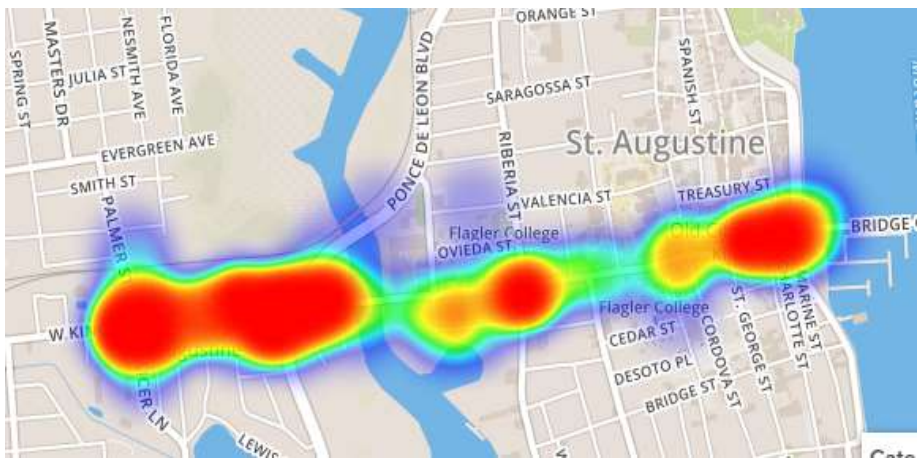
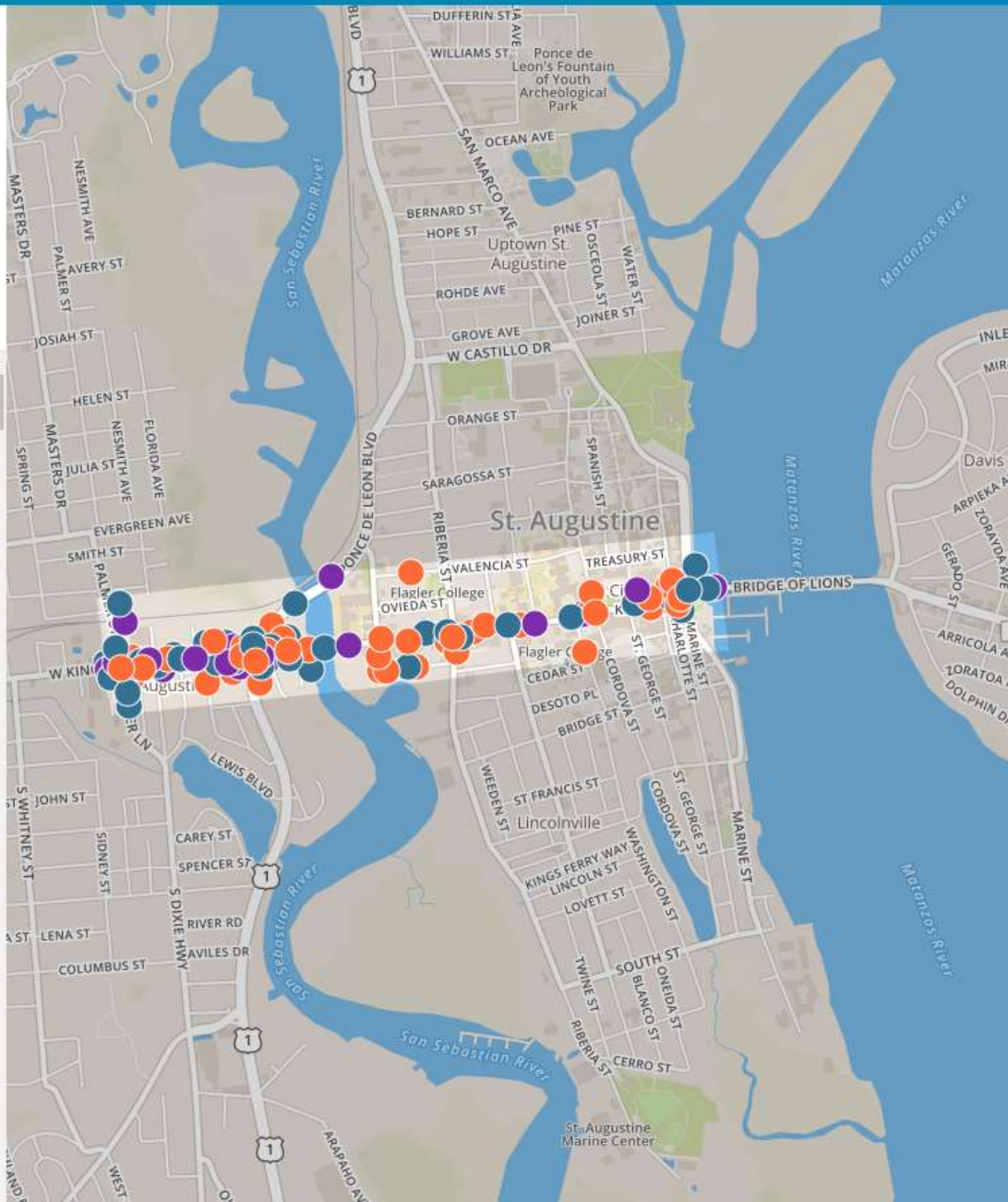
Really neat idea!

SUPPORT

2 SUPPORTERS



Reply...

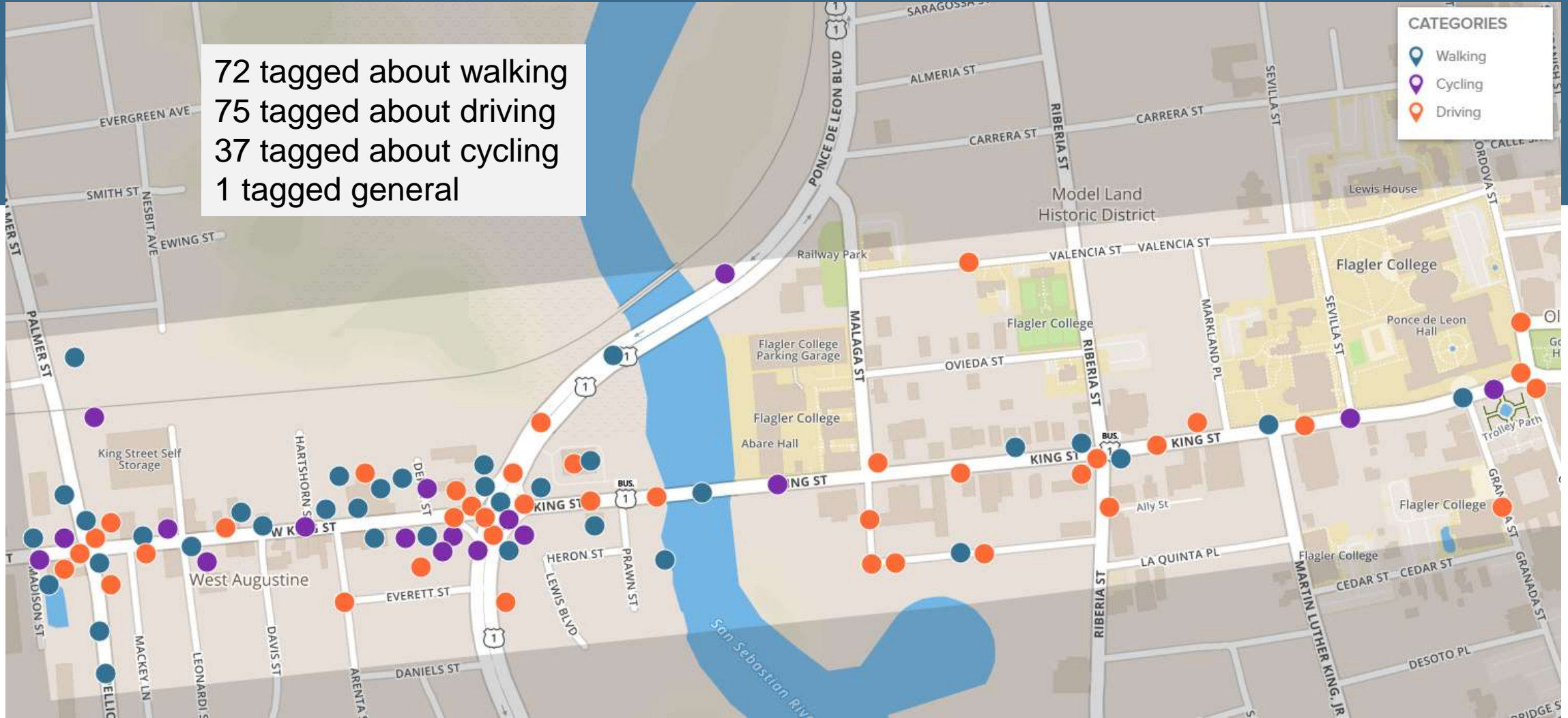


WEBSITE AND ONLINE ENGAGEMENT

Interactive Map

Visit: courb.com/king
Or Google: [courbanize](#)

72 tagged about walking
75 tagged about driving
37 tagged about cycling
1 tagged general



**The most
commented
areas for
each mode**

(ON-LINE)

Walking Issues

- Maintenance / Upkeep
- Obstacles
- Trees / Street Furnishings
- High Visibility Cross Walks

Cycling Issues

- Designated Bike Lanes
- Sharrows
- Maintenance / Upkeep

Driving Issues

- Location Specific Traffic Operation Fixes
- Flooding
- Traffic Light Timing / Left Turn Issues

TOPICS WE'VE HEARD SO FAR

(WORKSHOP ONE)

- Palmer and US 1 **road widths are challenge for non-motorized modes**
- **Lack of parking** for West Augustine Businesses
- Improve the US-1 and King Street intersection for **cyclists** and **pedestrians**
- Improve **timing of traffic lights** along the corridor
- No **safe bike infrastructure**
- **Obstructions** in the sidewalks
- Consolidate **Curb Cuts**



TOPICS WE'VE HEARD SO FAR

(WORKSHOP TWO)

- West King is “Where **locals live, work, and play**”
- **All modes** are important
- No continuity across the whole corridor. **Walkers, cyclists** and **drivers** need to be aware
- Good **lighting** and **sidewalks** needed
- West King is an **authentic** neighborhood
- Develop the **identity** of West King
- Needs more **parking**



COMPLETE STREETS ARE:

AN ECONOMIC CATALYST

LIVABLE

MULTI-MODAL

ACCESSIBLE

SAFE

CONTEXT DRIVEN



THE CITY:

Has a track record of developing creative solutions in narrow rights-of-ways

Has developed a set of streetscape standards that will be respected in the final design



Pedestrian Zone Fundamentals:

The space allocation for each zone may vary, but comfortable streets share these basic zones.



Furnishing
Zone

Walk/Talk
Zone

Retail/Dining
Zone

Shy Zone

SEGMENT A



SEGMENT A PARKING



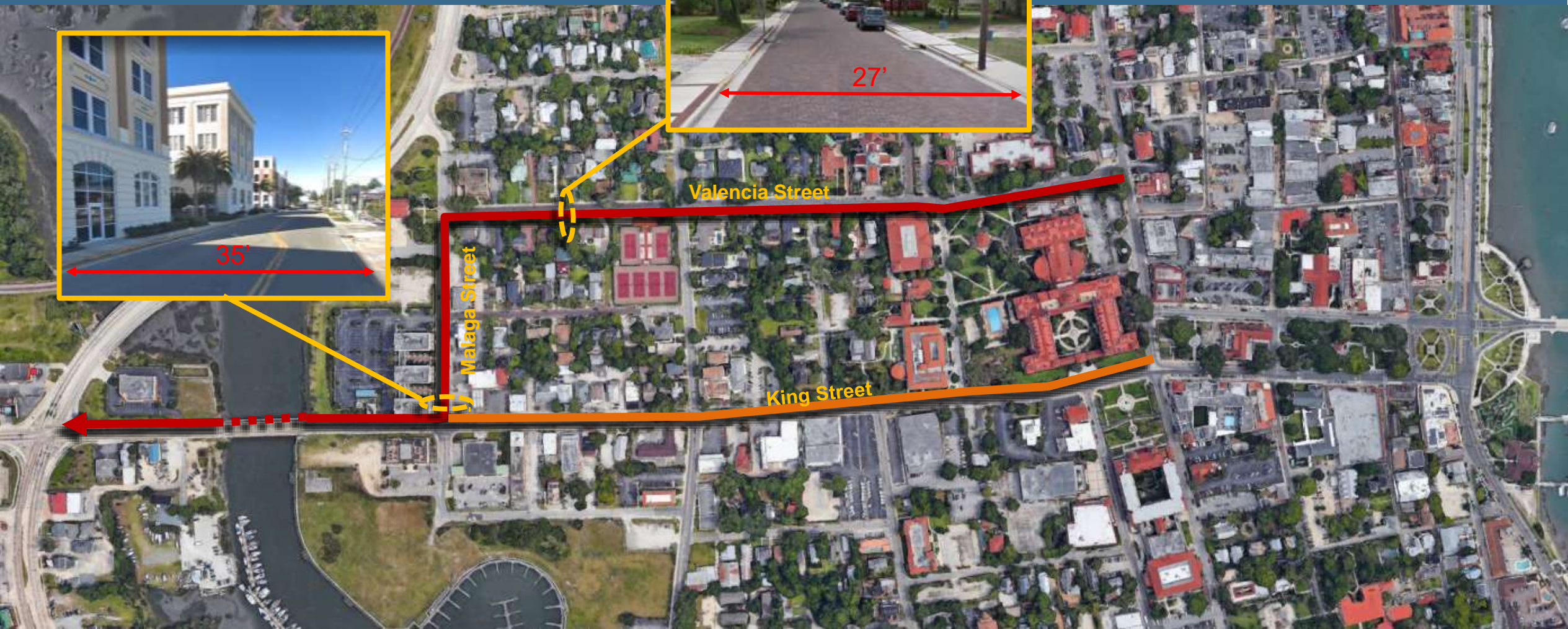


Connectivity

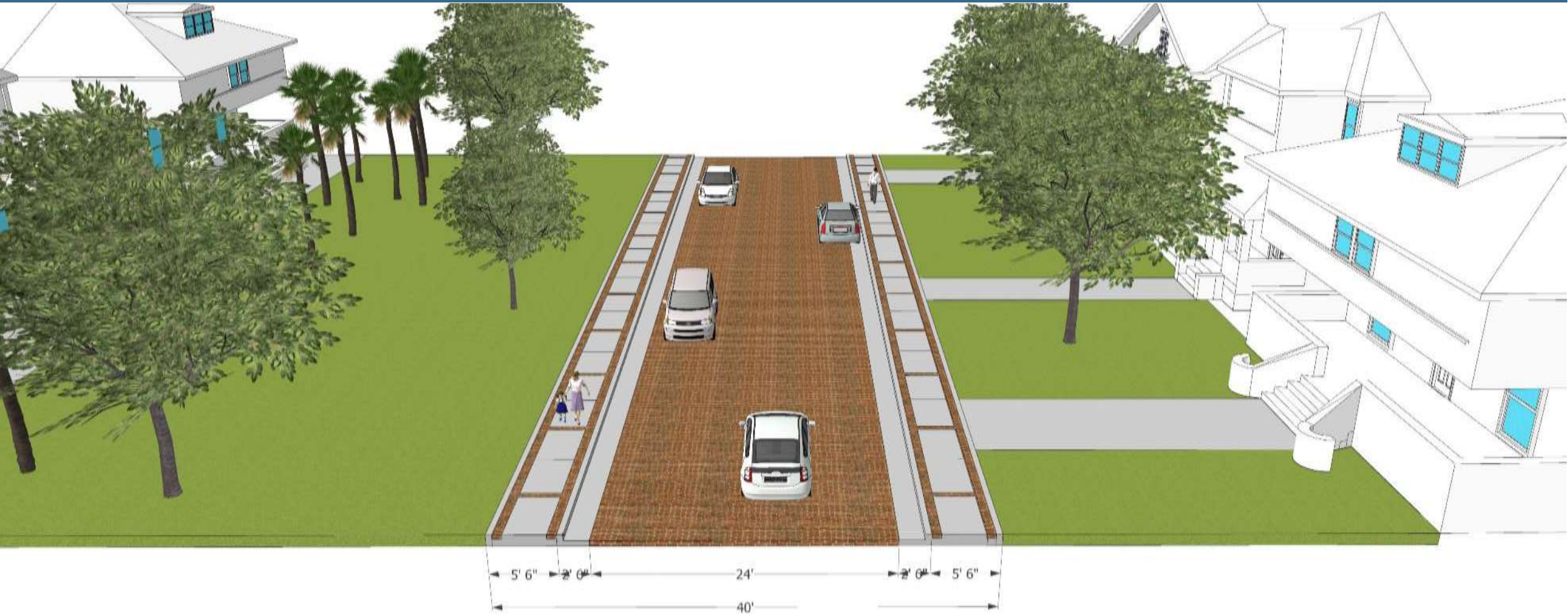
OPPORTUNITIES (EAST OF US 1)

BICYCLE CONNECTIVITY PROPOSED ROUTE

-  - Main Bicycle Route with Multi Trail
-  - Bicycle Route with Sharows



BICYCLE CONNECTIVITY VALENCIA STREET - EXISTING



BICYCLE CONNECTIVITY VALENCIA STREET - SIDE PATH



TRANSIT



KING ST., ST. AUGUSTINE, FLA.

TRANSIT

Autonomous People Mover



Babcock Ranch, Florida



University of Michigan



Las Vegas, Nevada

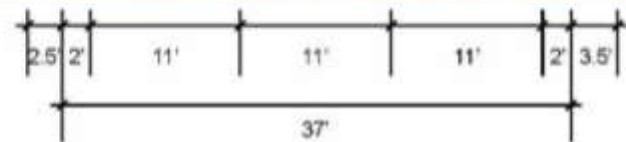
TRANSIT CONNECTIVITY POTENTIAL ROUTE



SEGMENT A TYPICAL SECTIONS – West King at Palmer



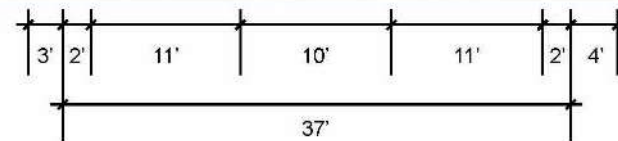
SEGMENT A TYPICAL SECTIONS – West King at Palmer



SEGMENT A

TYPICAL SECTIONS – West King at Palmer

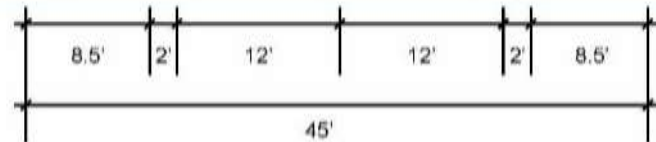
	Today	Proposed
2 Traffic Lanes	√	√
Left Turn Lane	√	Brick
Bicycle	×	Sharrow
Street Trees	×	Median
Site Furniture	×	×
Pedestrian Lights	×	√
Underground Power Lines	×	√



SEGMENT A TYPICAL SECTIONS – West King

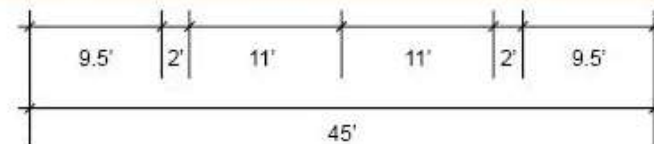


SEGMENT A TYPICAL SECTIONS – West King

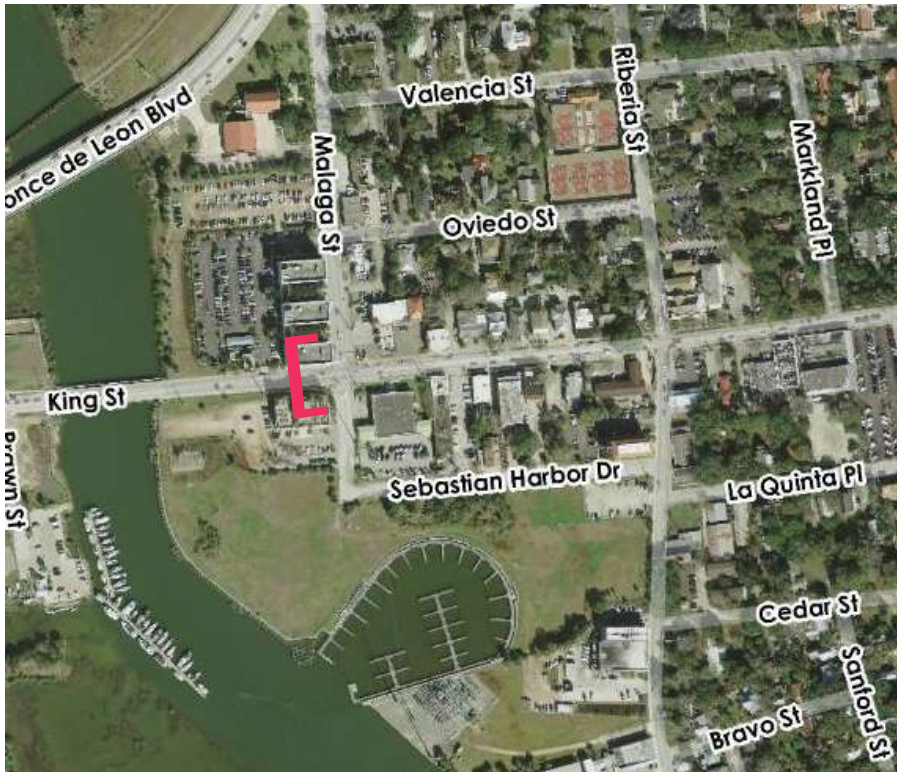


SEGMENT A TYPICAL SECTIONS – West King

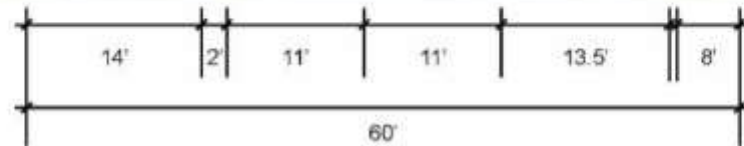
	Today	Proposed
2 Traffic Lanes	√	√
Bicycle	×	Sharrow
Street Trees	×	Median
Site Furniture	×	√
Pedestrian Lights	×	√
Underground Power Lines	×	√



SEGMENT A TYPICAL SECTIONS – King at Malaga

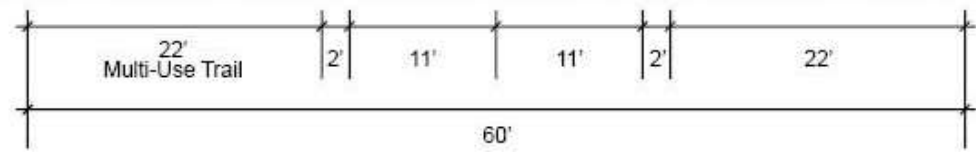


SEGMENT A TYPICAL SECTIONS – King at Malaga



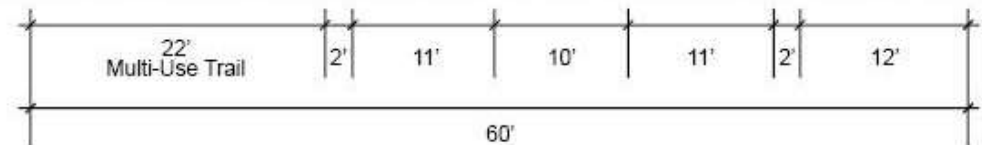
SEGMENT A TYPICAL SECTIONS – King at Malaga

	Today	Proposed
2 Traffic Lanes	√	√
Left Turn Lane	√	×
Bicycle	×	Sharrow & Separated Bike Facility
Rain Gardens	×	√
Street Trees	√	√
Site Furniture	×	√
Pedestrian Lights	×	√
Underground Power Lines	×	√

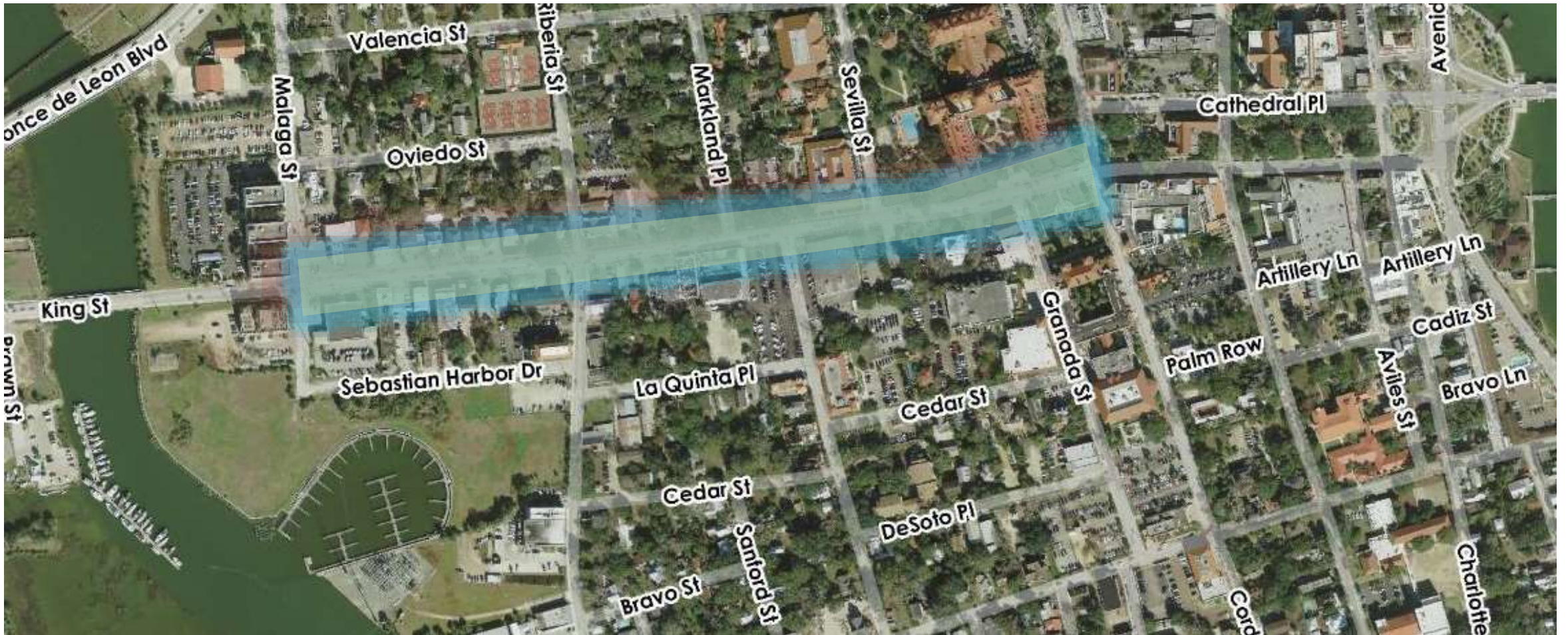


SEGMENT A TYPICAL SECTIONS – King at Malaga

	Today	Proposed
2 Traffic Lanes	√	√
Left Turn Lane	√	Transit
Bicycle	×	Sharrow & Separated Bike Facility
Street Trees	√	√
Site Furniture	×	√
Pedestrian Lights	×	√
Underground Power Lines	×	√

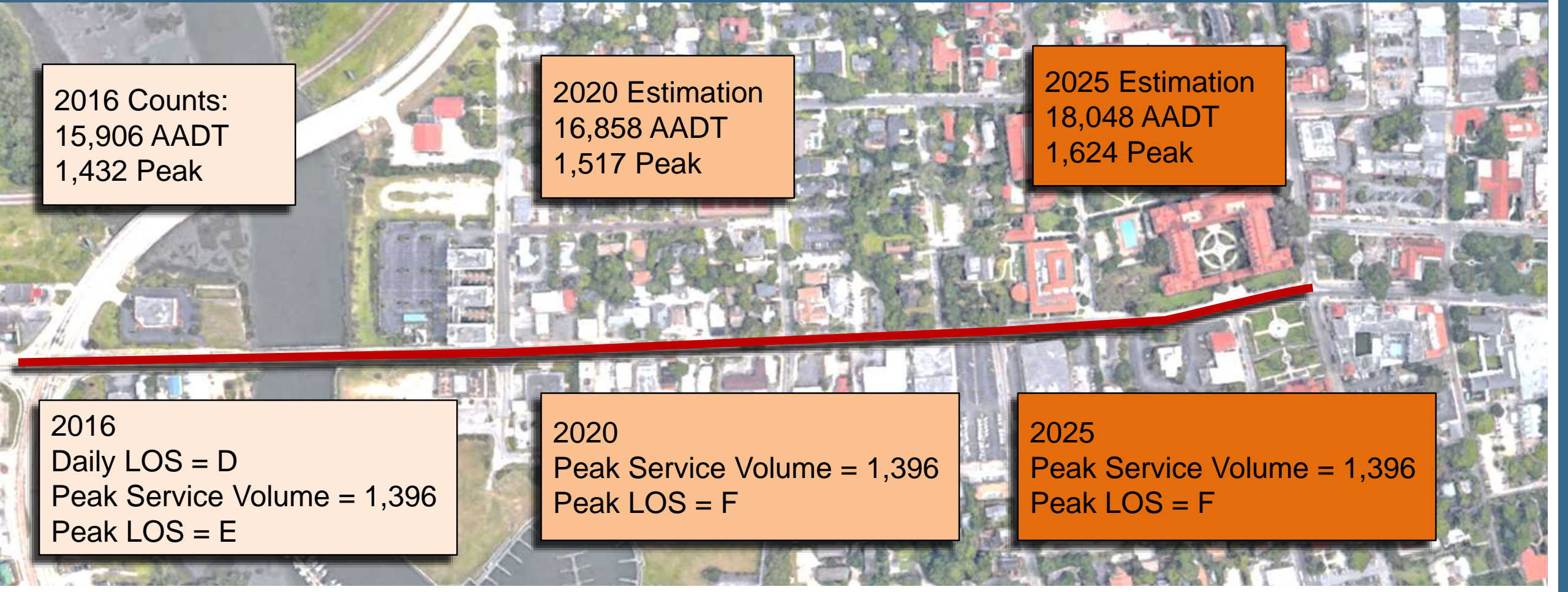


SEGMENT B OVERVIEW



EXISTING TRAFFIC & ESTIMATED FUTURE TRAFFIC

This represents a ~1.5% increase per year.



2016 Counts:
15,906 AADT
1,432 Peak

2020 Estimation
16,858 AADT
1,517 Peak

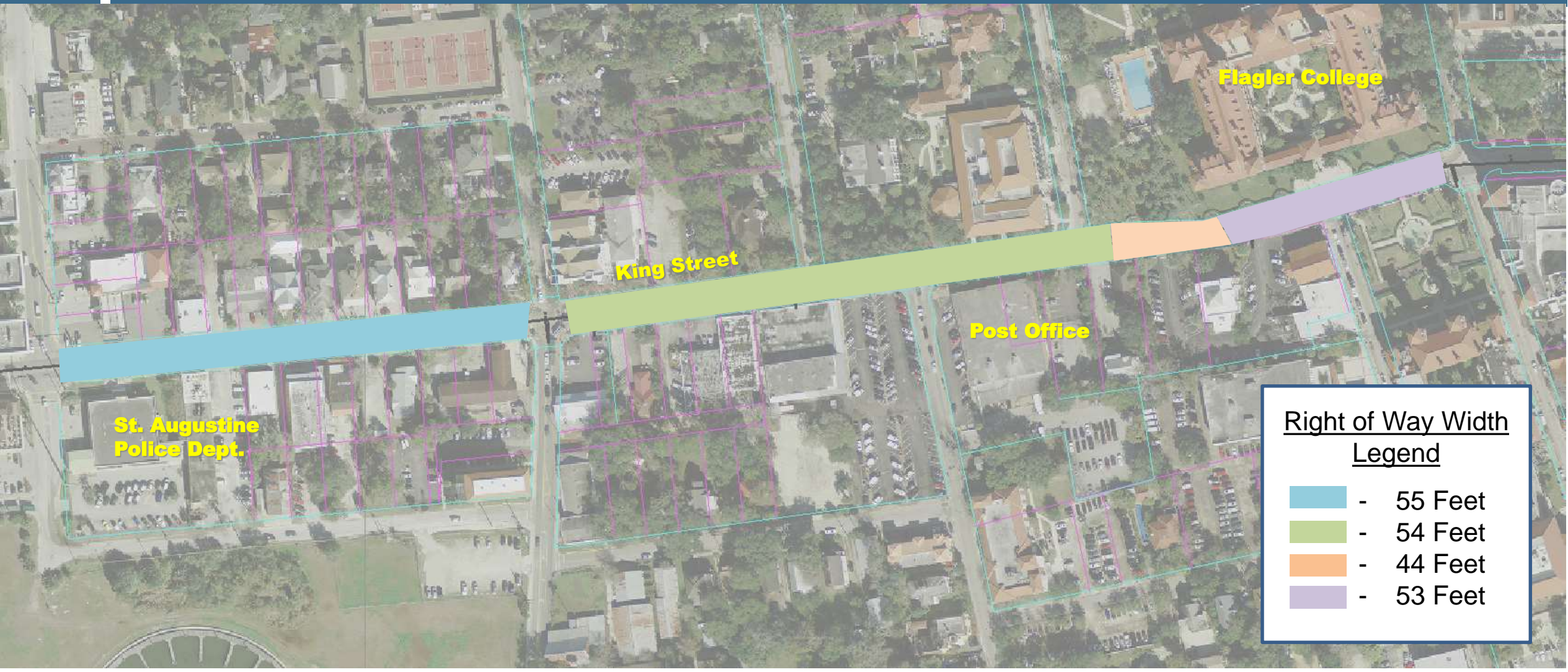
2025 Estimation
18,048 AADT
1,624 Peak

2016
Daily LOS = D
Peak Service Volume = 1,396
Peak LOS = E

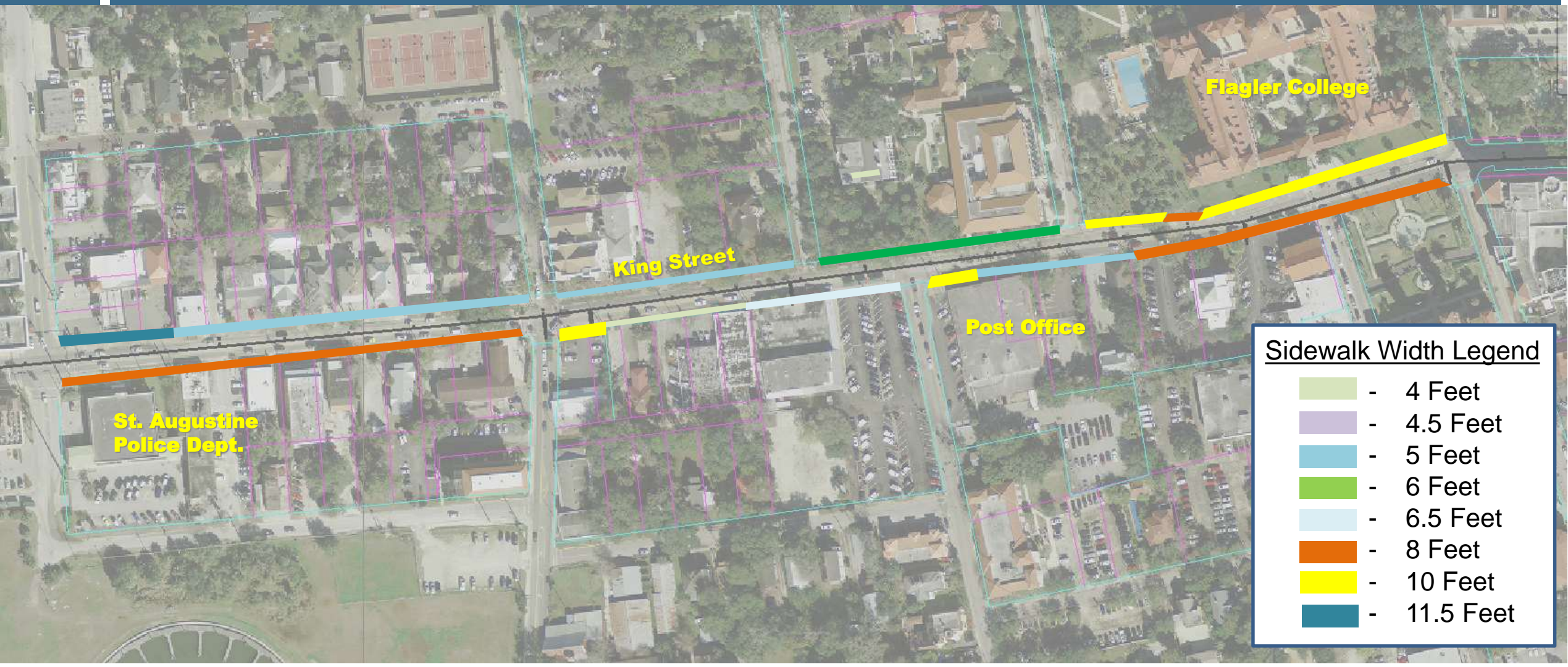
2020
Peak Service Volume = 1,396
Peak LOS = F

2025
Peak Service Volume = 1,396
Peak LOS = F

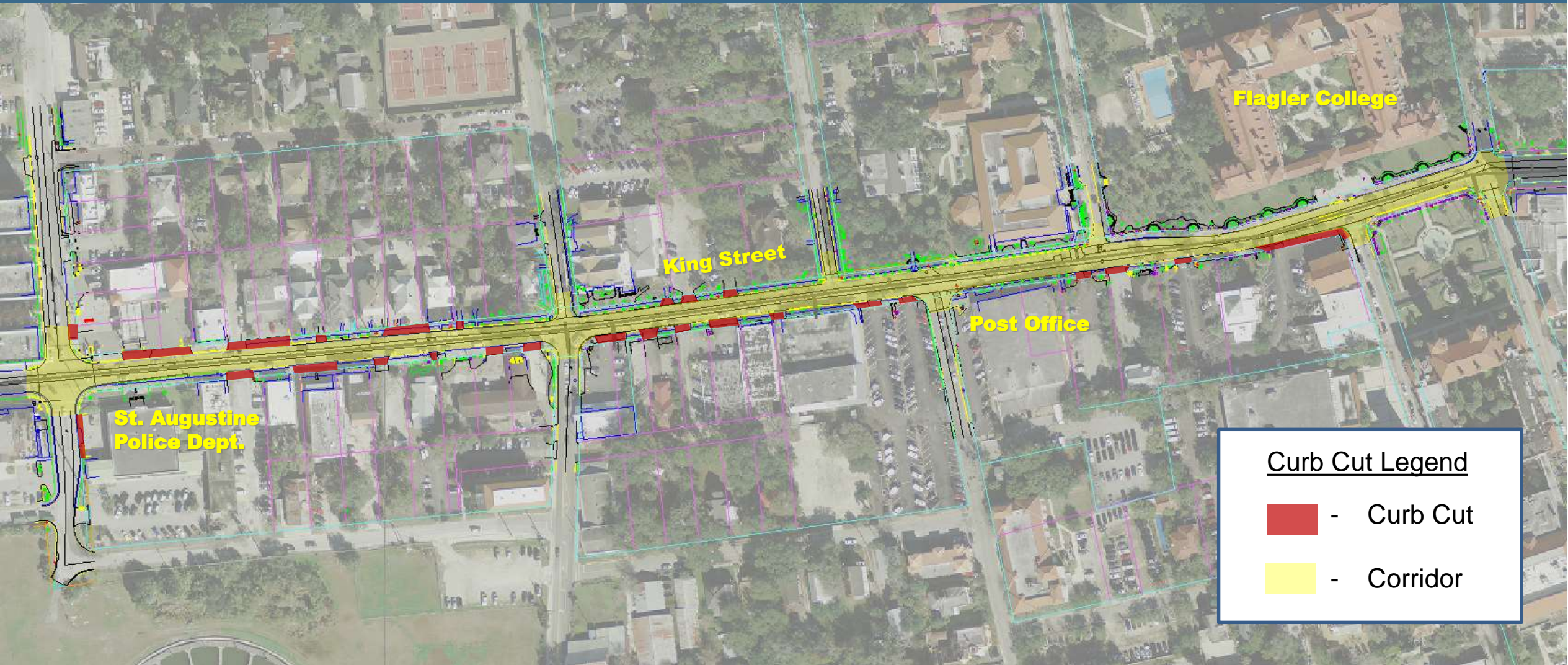
RIGHT OF WAY WIDTHS



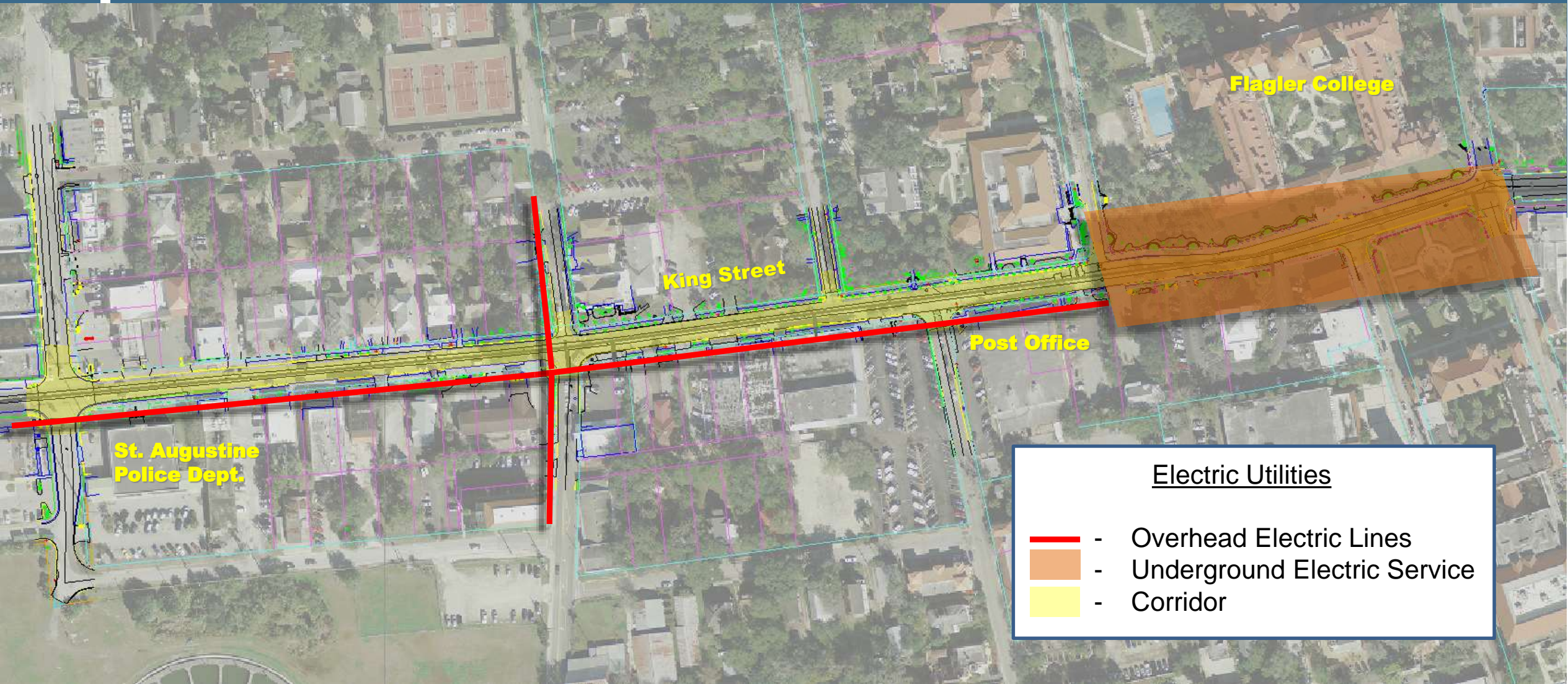
SIDEWALK WIDTHS






CURB CUTS



ELECTRIC UTILITIES



Electric Utilities

-  - Overhead Electric Lines
-  - Underground Electric Service
-  - Corridor

TRANSIT STOPS

No Transit Stops In This Section



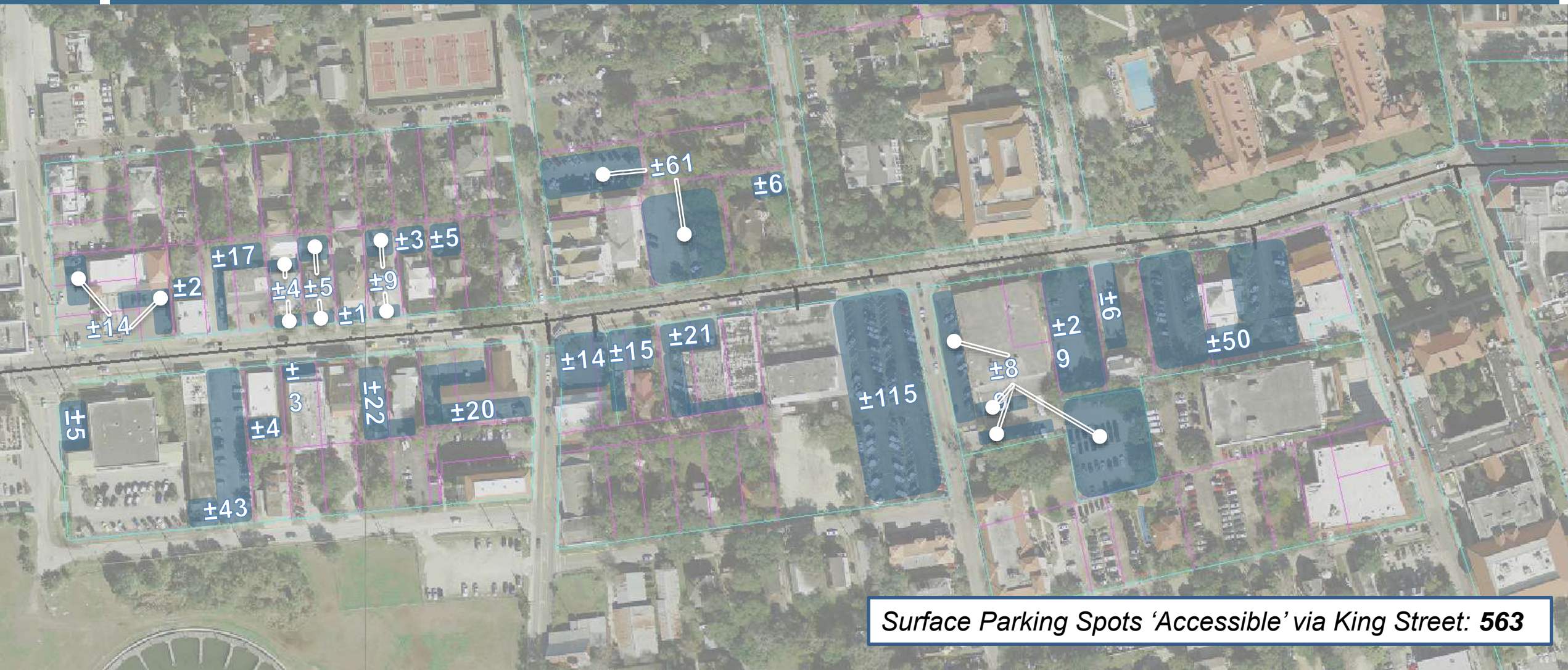
EXISTING BUILDINGS & PARKING

Legend

- Approximate R/W Location
- Existing Building Footprint
- Existing Surface Parking
- Corridor



PARKING INVENTORY



Surface Parking Spots 'Accessible' via King Street: 563

FUTURE LAND USE



3D MODEL (EXISTING)



VISUAL PREFERENCE

- 1 Suburban Building Form with Arterial Road**
- 2 Urban Building Form with Arterial Road**
- 3 Urban Building Form with Complete Street**

Suburban Building Form with Arterial Road



Suburban Building Form with Arterial Road



2

3

4

Suburban Building Form with Arterial Road



Suburban Building Form with Arterial Road



Suburban Building Form with Arterial Road



Suburban Building Form with Arterial Road



Urban Building Form with Arterial Road



Urban Building Form with Arterial Road



Urban Building Form with Arterial Road



Urban Building Form with Arterial Road



Urban Building Form with Arterial Road



Urban Building Form with Arterial Road



Urban Building Form with Complete Street



Urban Building Form with Complete Street



Urban Building Form with Complete Street



Urban Building Form with Complete Street



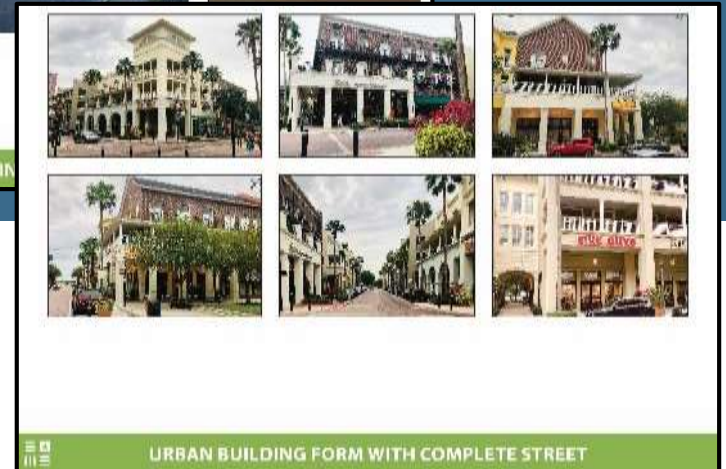
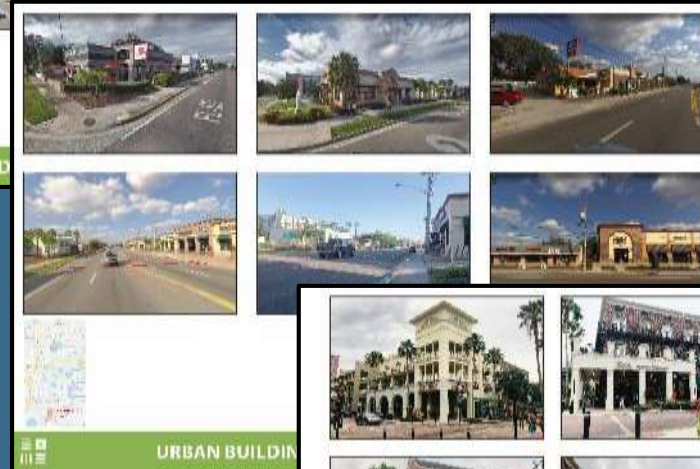
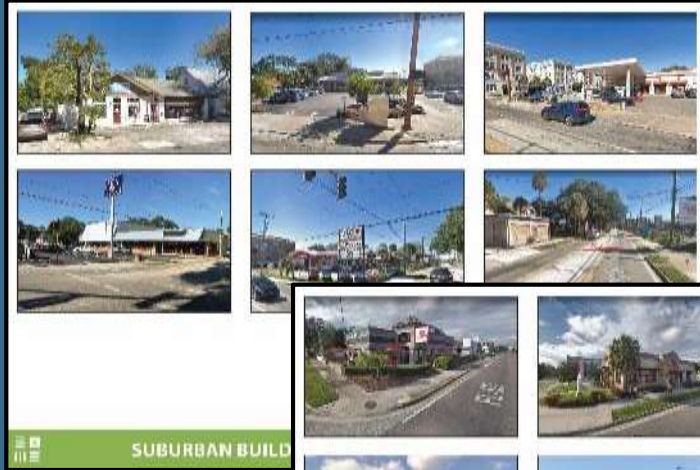
Urban Building Form with Complete Street



Urban Building Form with Complete Street



Breakout Activity



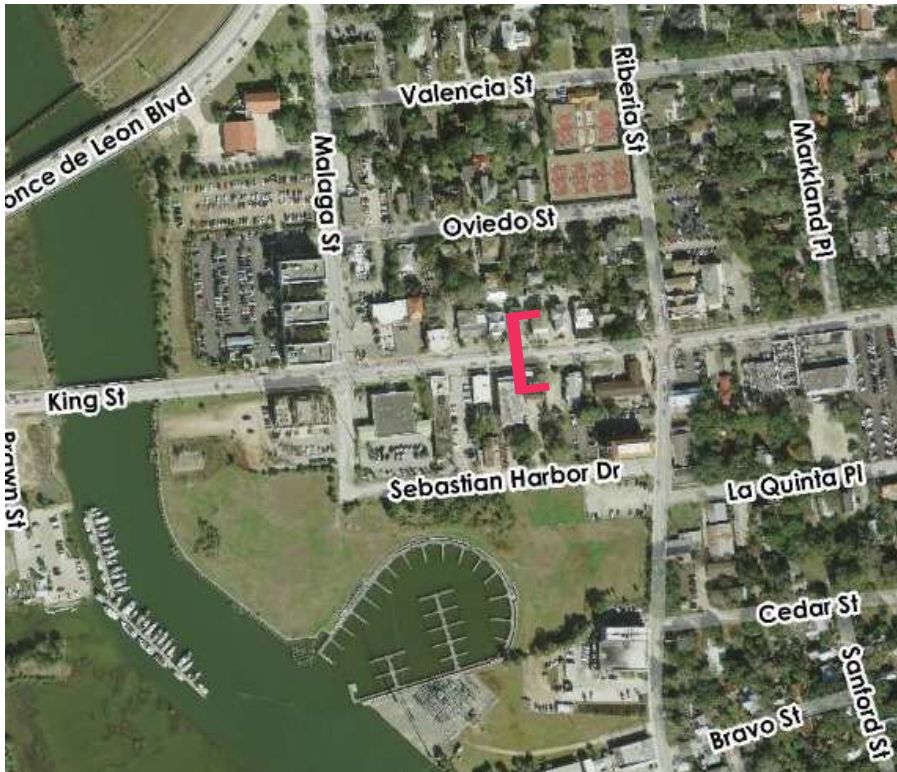


DESIGN
OPPORTUNITIES

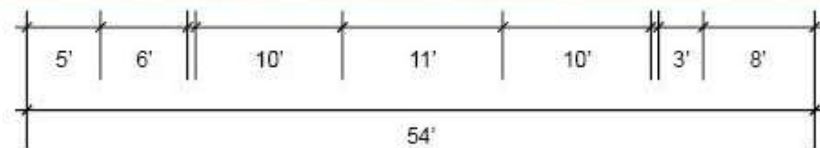
OPPORTUNITIES

- Landscape/Hardscape
- Improved Maintenance
- Coherent Pedestrian Zone
- Street Lighting
- Modify Cross Section
- Accommodate Cyclists & Micro-mobility

SEGMENT B TYPICAL SECTIONS – King at Riberia



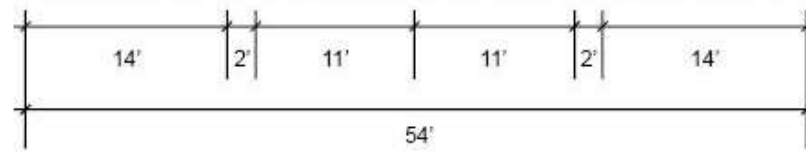
SEGMENT B TYPICAL SECTIONS – King at Riberia



SEGMENT B

TYPICAL SECTIONS – King at Riberia

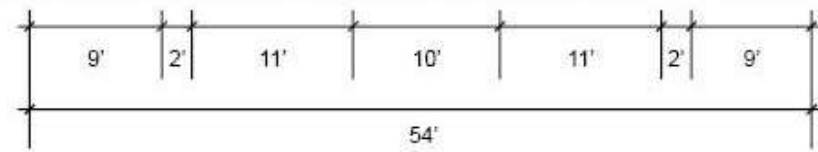
	Today	Proposed
2 Traffic Lanes	√	√
Center Turn Lane	√	×
Bicycle	×	Sharrow
Street Trees	√	√
Site Furniture	×	√
Pedestrian Lights	×	√
Underground Power Lines	×	√



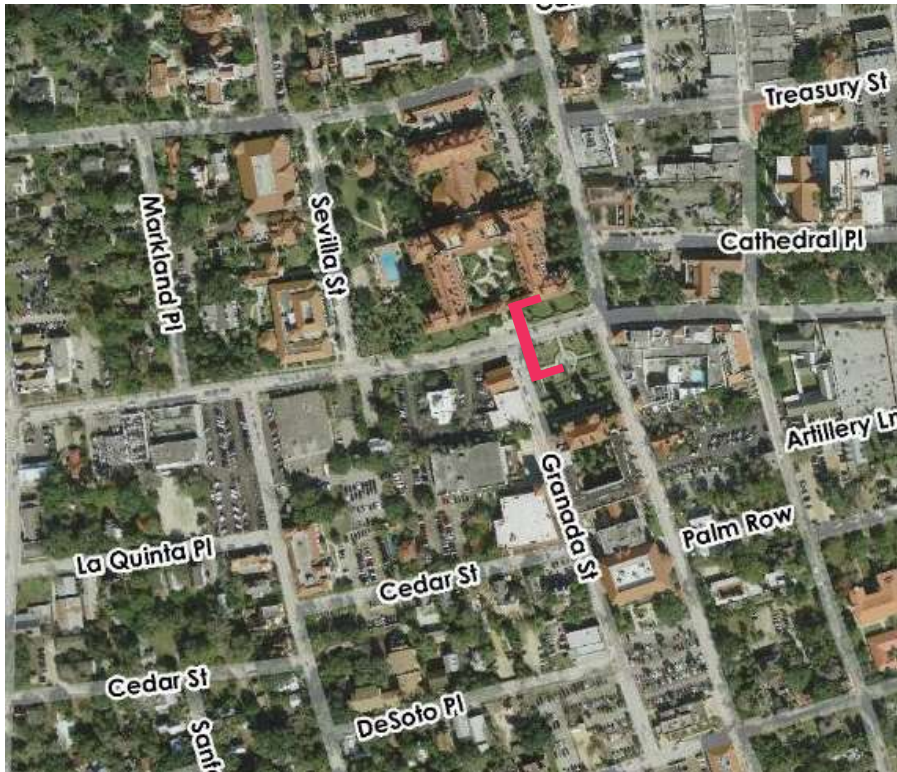
SEGMENT B

TYPICAL SECTIONS – King at Riberia

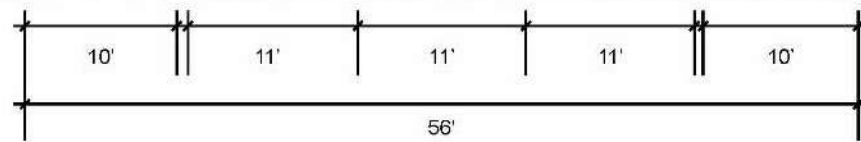
	Today	Proposed
2 Traffic Lanes	√	√
Center Turn Lane	√	Transit
Bicycle	×	Sharrow
Street Trees	√	√
Site Furniture	×	√
Pedestrian Lights	×	√
Underground Power Lines	×	√



SEGMENT B TYPICAL SECTIONS – King at Granada



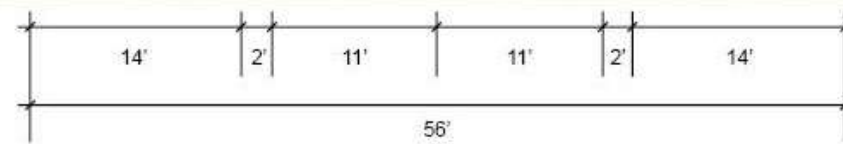
SEGMENT B TYPICAL SECTIONS – King at Granada



SEGMENT B

TYPICAL SECTIONS – King at Granada

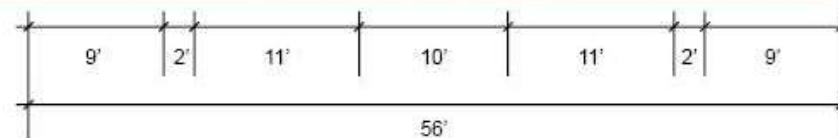
	Today	Proposed
2 Traffic Lanes	√	√
Left Turn Lane	√	×
Bicycle	×	Sharrow
Street Trees	√	√
Site Furniture	×	√
Pedestrian Lights	×	√
Underground Power Lines	×	√



SEGMENT B

TYPICAL SECTIONS – King at Granada

	Today	Proposed
2 Traffic Lanes	√	√
Left Turn Lane	√	Transit
Bicycle	×	Sharrow
Street Trees	×	√
Site Furniture	×	√
Pedestrian Lights	√	√
Underground Power Lines	√	√



NEXT STEPS

1 Get involved online!



2 Attend our next meeting.



3 Tell your neighbors!
Take some cards.



Q

&

A

Thank You.