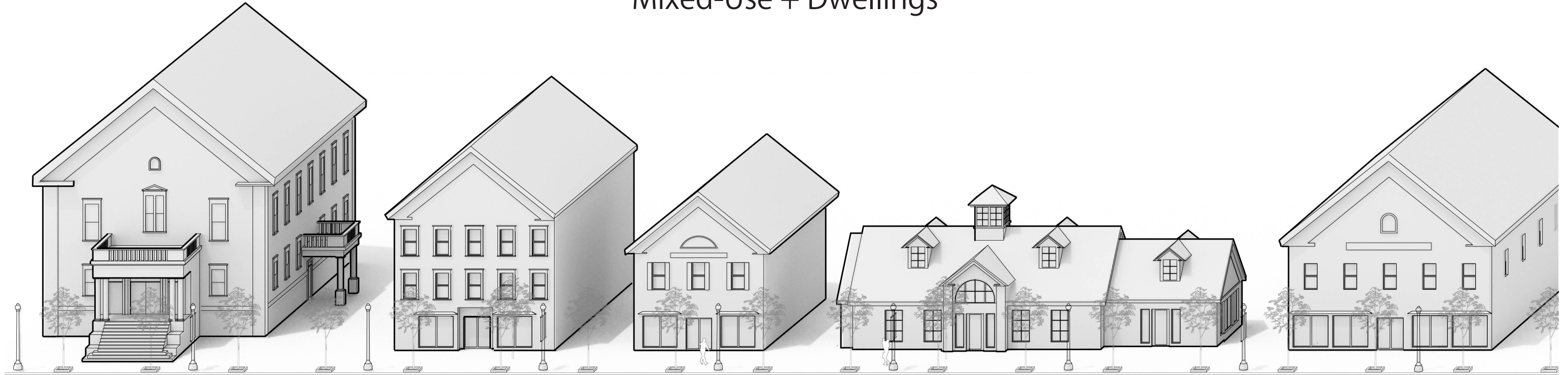


Ashland Downtown District Sub-Area A

Mixed-Use + Dwellings



Examples of Encouraged Streetscape Facade Typologies

		SITE CONFIGURATION						BUILDING CONFIGURATION		ARCHITECTURAL CHARACTER					
	Building Type	Setbacks	Frontages	Lot Size	Parking	Yards	FAR	Height	Entrances	Roof	Windows	Materials	Accents	Street Furniture	Landscaping
Required Features	Mixed-Use	Minimum: 0' ft Maximum: 15'	Minimum: 100'	Minimum: 35,000 sq. ft.		Minimum side yard: 0' Minimum rear yard: 12'	2.0	Maximum: 4 stories							
	Dwellings	Minimum: 15' Maximum: 15'	Minimum: 100'	Minimum: 35,000 sq. ft.		Minimum side yard: 0' Minimum rear yard: 12'	2.0	Maximum: 3 stories							
Examples of Encouraged Features	Mixed-Use + Dwellings				Located at the rear of property or below structure				Non-recessed entries, porticos and porches	Gabled with architectural asphalt shingles, slate, or faux slate	Vertical orientation, double-hung in appearance, simulated divided lite style	Lap or shingle siding in wood or wood-like materials, full or veneer masonry siding	Dormers, rake and eave trim, window casings, shutters, other decorative trim	Benches, lighting	Street trees, planters

Ashland Downtown District Sub-Area B

Mixed-Use + Dwellings



Examples of Encouraged Streetscape Facade Typologies

		SITE CONFIGURATION						BUILDING CONFIGURATION		ARCHITECTURAL CHARACTER					
	Building Type	Setbacks	Frontages	Lot Size	Parking	Yards	FAR	Height	Entrances	Roof	Windows	Materials	Accents	Street Furniture	Landscaping
Required Features	Mixed-Use	Minimum: 0' ft Maximum: 15'	Minimum: 75'	Minimum: 20,000 sq. ft.		Minimum side yard: 0' Minimum rear yard: 12'	1.5	Maximum: 4 stories							
	Dwellings	Minimum: 15' Maximum: 15'	Minimum: 75'	Minimum: 20,000 sq. ft.		Minimum side yard: 0' Minimum rear yard: 12'	1.5	Maximum: 3 stories							
Examples of Encouraged Features	Mixed-Use + Dwellings				Located at the rear of property or below structure				Recessed entries, glass storefronts	Flat roof with parapet, cap and edging details	Vertical orientation, double-hung in appearance, simulated divided lite style	Masonry with decorative coursing, corners, banding or rustication	Canopies, lighting, masonry lintels and sills, integrated signage	Benches, lighting	Street trees, planters

Ashland Downtown District Sub-Area C

Mixed-Use + Dwellings



Typology A



Typology B



Typology C



Typology D



Typology E

Examples of Encouraged Streetscape Facade Typologies

		SITE CONFIGURATION						BUILDING CONFIGURATION		ARCHITECTURAL CHARACTER					
	Building Type	Setbacks	Frontages	Lot Size	Parking	Yards	FAR	Height	Entrances	Roof	Windows	Materials	Accents	Street Furniture	Landscaping
Required Features	Mixed-Use	Minimum: 0' ft Maximum: 15'	Minimum: 50'	Minimum: 8,000 sq. ft.		Minimum side yard: 0' Minimum rear yard: 12'	1.5	Maximum: 3 stories							
	Dwellings	Minimum: 15' Maximum: 15'	Minimum: 50'	Minimum: 8,000 sq. ft.		Minimum side yard: 0' Minimum rear yard: 12'	1.5	Maximum: 3 stories							
Examples of Encouraged Features	Mixed-Use + Dwellings				Located at the rear of property, below structure or in attached or detached garages				Covered entrances with paneled doors, porches	Medium/high pitched mansard, gable, or hip with architectural asphalt shingles, slate or faux slate	Vertical orientation, double-hung in appearance, simulated divided lite style	Lap or shingle siding in wood or wood-like materials, full or veneer masonry siding	Dormers, rake and eave trim, window casings, shutters, other decorative trim	Benches, lighting	Street trees, planters