

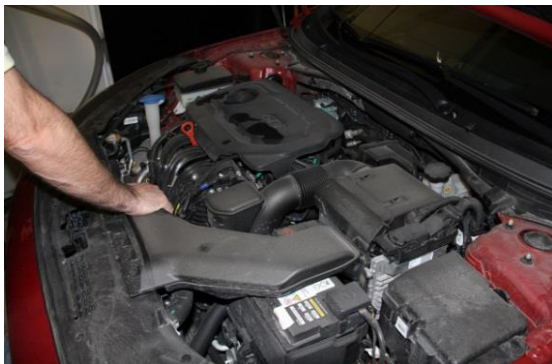


# GDi Intake Tool Instructions

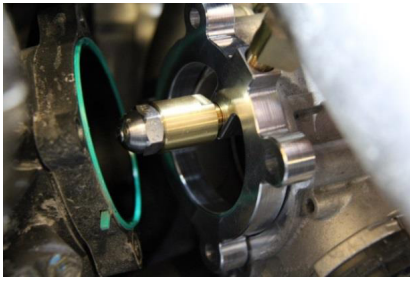
Part No. 500-0467



1. Remove Canister Assembly from packaging and assemble hook and nut. Attach customer specific air nipple to the inlet below the regulator.
2. Unscrew Canisters from GDi Intake Tool. Pour MotorVac GDi WASH into Step 1 Canister. Pour MotorVac GDi RINSE into Step 2 Canister. Screw Canisters securely onto GDi Intake Tool as shown in Step 1.



3. Remove Clean Air Snorkel (in some cases) and Snorkel from Air Filter to Throttle Body.
4. Unbolt Throttle Body from Intake and set bolts aside. **NOTE: In some cases (Ford 1.6 & 2.0L) it is easier to remove the Intake and then Throttle Body.**



5. Place GDi Adapter in front of Throttle Body. Orientation of adapter should be with nozzle directing flow to intake valves. Secure GDi Adapter and Throttle Body with bolts provided.



6. Reinstall all air snorkels ensuring any air flow sensors are properly installed and connected



7. Hang Canister Assembly from the hood of the vehicle. Ensure Ball Valve is in OFF (Soak) position. Rotate Regulator fully counter-clockwise to ensure air supply is closed. Connect shop air. Connect Outlet Hose to the GDi Adapter.



8. Turn Regulator clockwise and set pressure to 50-100 psi. Pressure should be adjusted based on engine displacement. For smaller 4 cylinder engines (2.0L and under) use 50 psi. For 6 cylinder and greater engines use up to 100 psi.



9. Start engine and set idle to 1700-2500 RPM. Turn Ball Valve to WASH and empty the contents of the WASH canister



10. Turn Ball Valve to OFF (SOAK). Allow cleaning product to soak for 3-5 minutes with engine running.



11. Turn ball valve to RINSE and empty the contents of the RINSE canister. Turn ball valve back to OFF (SOAK). Turn regulator fully counter clockwise, and disconnect shop air line from tool.



12. Let engine operate for an additional 3 minutes. Turn engine off. Disconnect GDi Intake Tool. Remove GDi adapter and install throttle body and air snorkels. Start engine and check that vehicle is operating properly. Perform a road test on vehicle (avoid aggressive driving maneuvers during road test).



©2018. All rights reserved. MotorVac® are registered and licensed trademarks of CPS Products, Inc..

**ISO 9001  
CERTIFIED**