

# DieselTune™ Emissions and Intake Cleaning System

Part# 500-0170, 500-0170M, 400-0280 and 400-3012



DieselTune™ EGR Cleaning Tool  
Part No. 500-0170  
Shipping weight: 10.8 lbs.  
Case Dimensions: 16½" x 10½" x 11¾" h

DieselTune™ EGR System Cleaner  
Part No. 400-0280  
Case of 12 - 946mL bottle(32 fl oz)

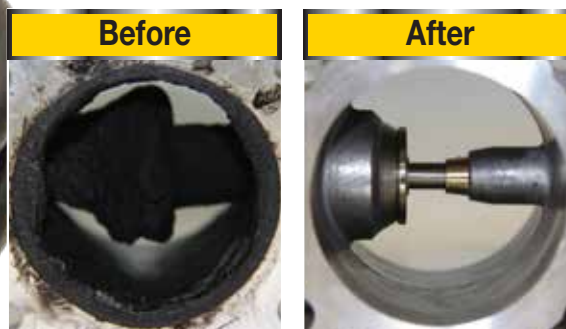
DieselTune™ Max Strength Fuel Injector Cleaner  
Part No. 400-3012  
Case of 12 - 354mL bottle (12 fl oz)

## Why use the DieselTune™ Emissions and Intake Cleaning System?

EGR Systems can become clogged with carbon deposits that affect fuel economy and performance of a diesel vehicle. The DieselTune™ EGR Cleaning Tool applies the powerful DieselTune™ EGR System Cleaner (Part# 400-0280), into the circuit. For most applications the exhaust side of the EGR is serviced, then the intake side. This cleaner rapidly dissolves the deposits, eliminating the issues commonly associated with plugged EGRs. By adding our DieselTune™ Max Strength Fuel Injector Cleaner (Part# 400-3012) you clean the pump and injectors completing the full diesel fuel service.

## Features and Benefits

- Thoroughly cleans the EGR circuit removing stubborn carbon deposits, eliminating the need for teardown and part replacement
- Cleans variable geometry turbo chargers (VGTs) including vanes
- A wide variety of engine adapters available to suit the needs of today's Diesel Specialist
- Exceeds industry injector standards for major engine manufacturers
- Eliminates issues caused by biodiesel and water in fuel using our exclusive HydroBond™ Technology



# DieselTune™ Emissions and Intake Cleaning System

Part# 500-0170, 500-0170M, 400-0280 and 400-3012



## DieselTune™ EGR Cleaning Adapters and Accessories

Manufacturer	Engine
Audi/VW	2.0L 4-cyl Engine Code CJAA/CBEA TDI
	3.0L 6-cyl TDI Clean Diesel Quattro
BMW	2L and 3L Engine Code N47/N57
Chrysler	EcoDiesel V6 3L 2014
Cummins	6.7L Turbo Diesel Engine (2500/3500)
	8.3L ISL Diesel Engines
	ISX15 Diesel Engine
Detroit	DD13 6-Cyl 12.8L Diesel Engines
	Series 60 12.7L Diesel Engines
Ford	6.4L Power Stroke diesel V8 (2008-2010) (MaxxForce Engine)
	6.7L Power Stroke diesel V8 (2011-Present)
GM	Duramax 6.6L diesel engine (GM/Isuzu) (2008-Present)
International	MaxxForce 9-13
Isuzu	4HK1TC 5.2 L
Mack	MP7/8 11.0L
Mercedes	2.1L 4-cylinder, 2-stage Turbocharged BlueTEC diesel engine (SPRINTER)
	3.0L 6-cylinder, BlueTEC diesel engine (2012-2014)
Nissan	4-cyl 2.2L (D22) Diesel Engine
Volvo	Volvo GHG D13 13L

To see the complete list of adapters for specific engines, please check our EGR Application Guide at [www.motorvac.com](http://www.motorvac.com) or scan the QR code on the right.



MotorVac®  
EGR Application Guide