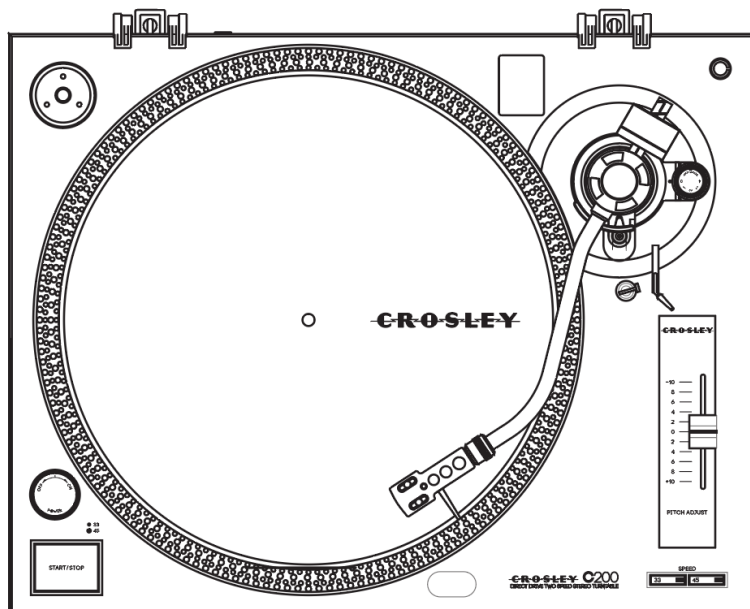




C200A
C200 Turntable
Instruction Manual





Questions, problems, missing parts?
Before returning to the store, call Customer Service
8 a.m. – 6 p.m., EST, Monday – Friday
1-888-CROSLEY
www.crosleyradio.com

Safety Instructions

Read and understand this entire manual before using this product. Keep these instructions for future reference.


1. Read these instructions carefully.
2. Keep these instructions for later reference.
3. Heed all warnings.
4. Follow all instructions.
5. Do not use the device near water.
6. Clean only with a dry cloth.
7. Do not block any ventilation openings. Always ensure a sufficient ventilation. Install in accordance with the manufacturer's instructions.
8. Do not install near any heat sources such as radiators, heat registers, stoves, or other devices (including amplifiers) that produce or radiate heat.
9. Do not defeat the safety purpose of the polarized or grounding-type plug. A polarized plug has two blades, one being wider than the other. A grounding-type plug has two blades and a third grounding prong. The wide blade or the third prong is provided for your safety. If the provided plug does not fit into your outlet, consult an electrician for replacement of the obsolete outlet.
10. Protect the power cord from being walked on or pinched or otherwise damaged, particularly at plugs, convenience receptacles, and the point where they exit from the device.
11. Only use attachments/accessories that have been specified by the manufacturer.
12. Use only with a cart, stand, tripod, bracket or table specified by the manufacturer, or sold along with the device. When a cart is used, use caution when moving the cart/device combination to avoid injury from tip-over.
13. Unplug this device during lightning storms or when not being used for longer periods of time.
14. Refer all servicing to qualified service personnel only. Servicing is required when the device has been damaged in any way, such as: Power-supply cord or plug has been damaged, liquid has been spilled or entered the device, the device has been exposed to rain or moisture, or objects have fallen into the device, the device does not work normally, or it has been dropped.
15. Where a mains plug is used as the disconnect device, the disconnect device shall remain readily operable.
16. Please keep the unit in a good ventilation environment at any time.



 <p>The lightning flash with arrowhead symbol within the equilateral triangle is intended to alert the user to the presence of un-insulated "dangerous voltage" within the product's enclosure that may be of sufficient magnitude to constitute a risk of electric shock.</p>	<p style="text-align: center;">CAUTION DO NOT OPEN RISK OF ELECTRIC SHOCK</p> <p>CAUTION: To reduce the risk of electric shock, do not remove any cover. No user-serviceable parts inside. Refer servicing to qualified service personnel only.</p>	 <p>The exclamation point within the equilateral triangle is intended to alert the user to the presence of important operation and maintenance (servicing) instructions in the literature accompanying this appliance.</p>
---	---	---

WARNING
To reduce the risk of fire or electric shock, do not expose this apparatus to rain or moisture. The apparatus shall not be exposed to dripping or splashing and that no objects filled with liquids, such as vases, shall be placed on the apparatus.

CAUTION
The mains plug is used as disconnect device. The mains plug of apparatus should not be obstructed or should be easily accessed during intended use. To be completely disconnect the power input, the mains plug of apparatus shall be disconnected from the mains.

- Caution Marking and rating plate was located at rear enclosure of the apparatus.
- When the mains plug or appliance coupler is used as disconnect device, it shall remain readily operable.
- The ventilation should not be impeded by covering the ventilation openings with items, such as newspapers, tablecloths, curtains, etc.; Minimum distances 10cm around the apparatus for sufficient ventilation.
- No naked flame sources, such as lighted candles, should be placed on the apparatus.
- Use the apparatus only in a moderate climate.
- Element 1a:  IEC 60417-6043 (2011-01)
- Element 2: *Sharp edges** or equivalent text
- Element 3: Optional
- Element 4: *Do not touch* or equivalent text

Items in this package

Before throwing away any packaging materials, please check thoroughly and make sure you find the following items that come along with this package:

- Turntable
- Turntable Lid
- Turntable Platter
- Turntable slip mat
- Headshell
- 45 RPM adapter
- Tonearm Counterweight
- Power adaptor

Please contact Crosley customer service if there is any accessory missing from the package. **Retain the original packaging materials for exchange or return purposes.**

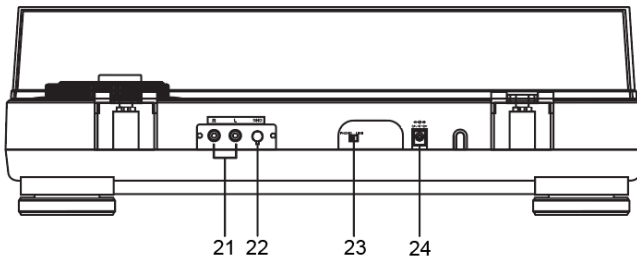
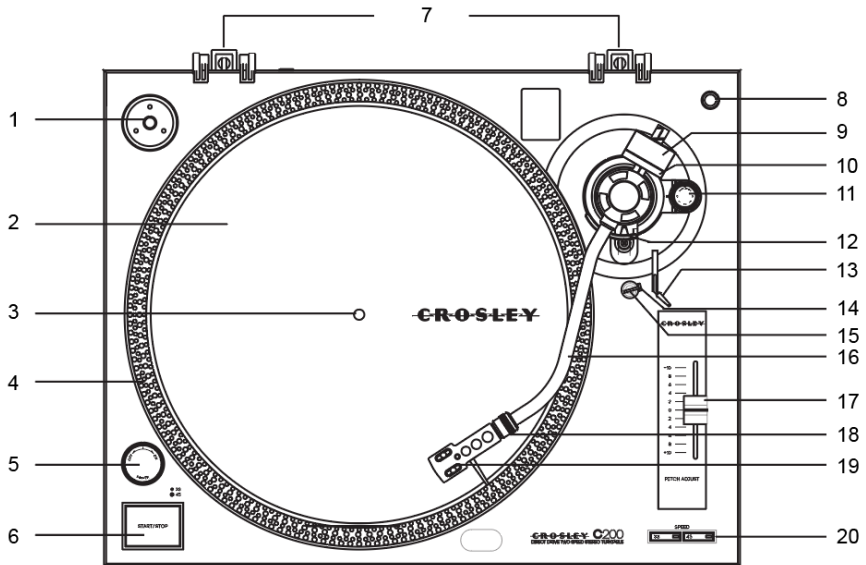
Specifications

Power	AC power adaptor, DC output 12V 2A
Turntable speed	33 ¹ / ₃ , 45 RPM
Turntable Dimension	17.72"x13.78"x5.47" (W x D x H)
Turntable Weight	10.8 lbs
Replacement Needle	Crosley NP5
Needle Pressure	3.5 _± 0.5g
Anti-Skate	0~4

Note:

- *Design and specifications are subject to change without notice.*
- **To help save power consumption, some models will comply with ERP energy saving standard. When there is no audio input for 20 minutes, their powers will automatically cut-off. To turn power back on and resume playing, you will need to turn off the power and turn it on again.**

Product Description



- | | |
|--------------------------------|----------------------------|
| 1. 45 RPM Adapter | 13. Cue Lever |
| 2. Turntable Platter | 14. Tonearm Rest |
| 3. Turntable Spindle | 15. Hold Down Clip |
| 4. Strobe Dots | 16. Tonearm |
| 5. Power Knob | 17. Pitch Control |
| 6. Start/Stop Button | 18. Headshell Locking Ring |
| 7. Hinges | 19. Headshell |
| 8. Spare Headshell Holder | 20. Speed Selector |
| 9. Tonearm Counterweight | 21. Phono/Line Jacks |
| 10. Downforce Scale Dial | 22. Grounding Terminal |
| 11. Anti-Skate Adjustment Dial | 23. Phone/Line Switch |
| 12. Tonearm Lift | 24. Power Jack |

Initial Setup

Essential Setup

1. Place the unit on a flat and level surface. The selected location should be stable and free from vibration.
2. Install the turntable lid to the hinges.
3. Remove the tie-wrap that is holding the tonearm.
4. Install the turntable platter.
5. Place the slip mat on top of the turntable platter.
6. Insert the **Headshell** into the socket at the front of the tonearm, and then turn the **Headshell Locking Ring** counter-clockwise. As the ring turns, it pulls the headshell into its seated position.
7. Slide **Tonearm Counterweight** onto tonearm and twist it lightly onto the rear shaft of the tonearm.
8. Adjust the counterweight to set proper stylus pressure.
9. Connect AC adaptor to the **Power Jack** of the unit.

Note: Do not plug the AC power adaptor to power outlet before all the assembly is completed. Before turning the power on, make sure again all the connection settings are correct. Always turn off the power when connecting or disconnecting.

Tonearm Counterweight Adjustment for Stylus Pressure

1. Remove the stylus protector from the cartridge and avoid touching the stylus tip during the adjustment.
2. Release the tonearm **Hold Down Clip**, gently hold the tonearm and move it away from the **Tonearm Rest**. At this point, the tonearm is unbalanced and free to swing.
3. While gently holding the tonearm, carefully rotate the **Counterweight** towards the front of the turntable until the tonearm is horizontally balanced and hovers freely just above the platter without the stylus touching the platter surface.
4. Return the tonearm to the **Tonearm Rest** and lock the **Hold Down Clip**.
5. While holding the counterweight steady without any rotation, rotate carefully only the **Downforce Scale Dial** until the "0" on the scale lines up with the centerline marked along the top of the tonearm.
6. Rotate the counterweight including the downforce scale dial counter-clockwise (as seen from the front of the turntable) until the scale shows the recommended pressure value for stylus.

Note: The recommended pressure for the factory-installed cartridge is $3.5 \pm 0.5g$

Phono/Line Switch

For increased flexibility of use, this unit has a built-in stereo phono pre-amplifier. If you prefer to use the phono input of your stereo system or your standalone phono pre-amplifier, set the Phono/Line switch to the PHONO position. Otherwise, please set it to LINE position and make connection to the AUX input or other high-level input on your stereo system.

Stereo System Connection

RCA Jacks

- The RCA Jacks of this unit are shared as both the Phono output jacks and the Line output jacks. They are determined by the **Phono/Line Switch**.
- When used as a line output, the jacks output analog line-level signals and could be connected directly with a pair of active speakers or the appropriate input of your stereo system. When used as a Phono output, they should be connected to the phono pre-amp or the phono input of the stereo system.
- The Red plug connects with the Right channel and the White plug connects with the Left channel.

Note:

- *If the Phono/Line switch is set at LINE position but RCA jacks connected to the stereo system's phono input, the sound might be distorted due to input overload and could damage your stereo system.*
- *If the Phono/Line switch is set at PHONO position but RCA jack connected to the stereo system's line input, the volume will be very low due to lacking signal pre-amplification.*
- *RCA Jack is not designed to be connected directly to the passive/unpowered speakers and if it does, the volume will be very low.*

Turntable Operation

1. Turn the Power Knob clockwise to turn on the power.
2. Set the **Speed Switch** accordingly.
3. Place the record on the turntable. Use the **45 RPM Adapter** if necessary.
4. Remove the stylus protector from the stylus assembly.
Note: To avoid stylus damage, make certain the included stylus guard is in place whenever the turntable is being moved or cleaned.
5. Press the **Start/Stop Button** to start the turntable platter's rotation.
6. Release the tonearm **Hold Down Clip**.
Note: when the turntable is not in use, remember to lock back hold down clip.
7. Use the **Cue Lever** to lift up the tonearm.
8. Gently move the tonearm over the record where play is desired to begin. Set the **Cue Lever** back to the down position, the tonearm will descend slowly onto the record and begin to playback.
9. When the record is finished playing, use the **Cue Lever** again to raise the tonearm and then return it to the **Tonearm Rest**. Release the lever to let the tonearm sit back at its rest. To suspend the playback, repeat the same steps.
10. Lock the **Hold Down Clip** to secure the tonearm.
11. Press the Start/Stop Button again to stop the turntable platter's rotation. Turn the Power Knob counter-clockwise to turn off the power.

Anti-skate Adjustment

- A small outward “anti-skating” force can be applied to the tonearm to compensate for the “skating” force that pulls the arm toward the center of the record.
- For best performance during normal turntable usage, it is recommended to set the anti-skate control knob to the same value as indicated by the downforce scale dial.

Pitch Control Adjustment

- When the platter is spinning, observe the strobe dots on the edge of the platter. As illuminated by the light coming from the strobe illuminator, if the appropriate row of strobe dots appears to be stationary, the platter is spinning at the precise rated speed.

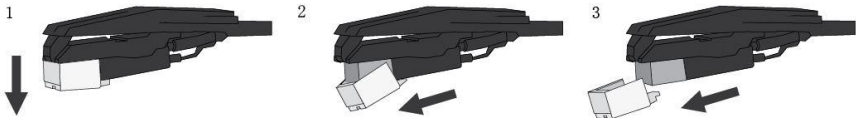


- If the dots appear to be moving to the right, the platter is spinning below rated speed; if they appear to be moving to the left, the platter is spinning above rated speed.

Needle Replacement

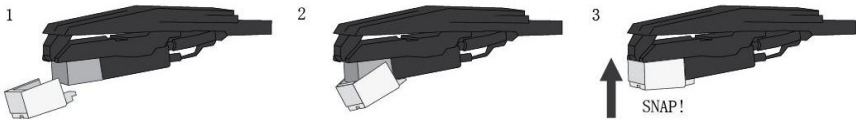
Removing Needle

- Gently pull down the front edge of the needle.
- Pull needle forward.
- Pull out and remove.



Installing Needle

- Position the needle with its tip facing down.
- Line up the back of the needle with the cartridge.
- Insert the needle with its front end at a downward angle and gently lift the front of the needle upward until it snaps into place.



Cartridge Replacement

1. Before replacement, put the stylus protector back on the stylus to prevent damage to the stylus during the replacement process.
2. Turn the headshell locking ring clockwise to release the headshell and remove it from the tonearm.
3. Carefully remove the wire leads from the original cartridge
4. Loosen the two screws on the headshell that are securing the cartridge and then remove the original cartridge.
5. Mount the new cartridge to the headshell and tighten it lightly. Do not completely tighten the screws at this moment.
6. Connect the wire leads to the new cartridge's terminals .The wire lead color codes are as below:

White	Left channel positive	(L+)
Blue	Left channel negative	(L-)
Red	Right channel positive	(R+)
Green	Right channel negative	(R-)
7. Install the headshell back to the tonearm and lock the headshell ring.
8. Adjust the cartridge's position to make sure it is precisely aligned on the headshell so that the stylus will be tracking parallel to the grooves. Tighten the screws completely once the perfect alignment is achieved.

Note: For best result, use a cartridge alignment protractor to aid the alignment process.

Turntable Maintenance

1. Do not touch the stylus tip with your fingers. Avoid bumping the stylus on the turntable mat or a record's edge.
2. Clean the stylus frequently with a soft brush with a back-to-front motion only.
3. Clean the records to get rid of dust or grease with a record cleaning brush and record cleaning solution.
4. Clean the turntable lid and turntable cabinet with a slightly dampened microfiber cloth.

Note: Do not use cleanser other that contains alcohol, benzene or any other harsh chemicals, which might damage the paint and finish of the turntable.

**** Crosley offers a product line of different cleaning accessories. Please ask your retailer or check out our website www.crosleyradio.com for more cleaning product information.**

Troubleshooting

There is no power

- No power at the power outlet.
- To help save power consumption, some models will comply with ERP energy saving standard. When there is no audio input for 20 minutes, their powers will automatically cut-off. To turn power back on and resume playing, turn off the power and turn it on again.

Power is on, but the platter does not turn

- Turntable mode is not selected.

Turntable is spinning, but there is no sound, or sound not loud enough

- Stylus protector is still on.
- Tonearm is lift up by the lever.

Record sounds too fast or too slow.

- Wrong speed selected for the record.
- Pitch Control is not adjusted correctly.

FCC Statements

This equipment has been tested and found to comply with the limits for a Class B digital device, pursuant to Part 15 of the FCC Rules. These limits are designed to provide reasonable protection against harmful interference in a residential installation. This equipment generates, uses, and can radiate radio frequency energy and, if not installed and used in accordance with the instructions, may cause harmful interference to radio communications. However, there is no guarantee that interference will not occur in a particular installation. If this equipment does cause harmful interference to radio or television reception, which can be determined by turning the equipment off and on, the user is encouraged to try to correct the interference by one or more of the following measures:

- Reorient or relocate the receiving antenna.
- Increase the separation between the equipment and receiver.
- Connect the equipment into a circuit different from that to which the receiver is connected.
- Consult the dealer or an experienced radio TV technician for help.