



Experience in Diagnostics



CONSULTANCY



INSTRUMENTS



TRAINING

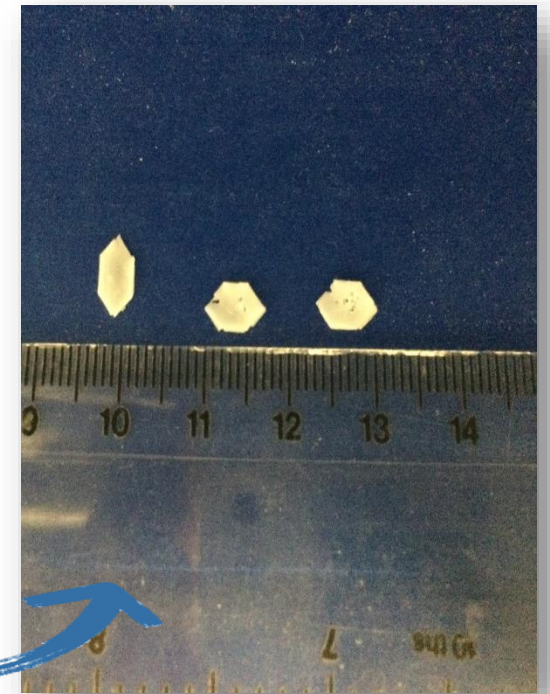


Pick-and-place applications ⁽¹⁾

Small thin hexagonal cakes

BTL designed several formulations for pick-and-place applications.

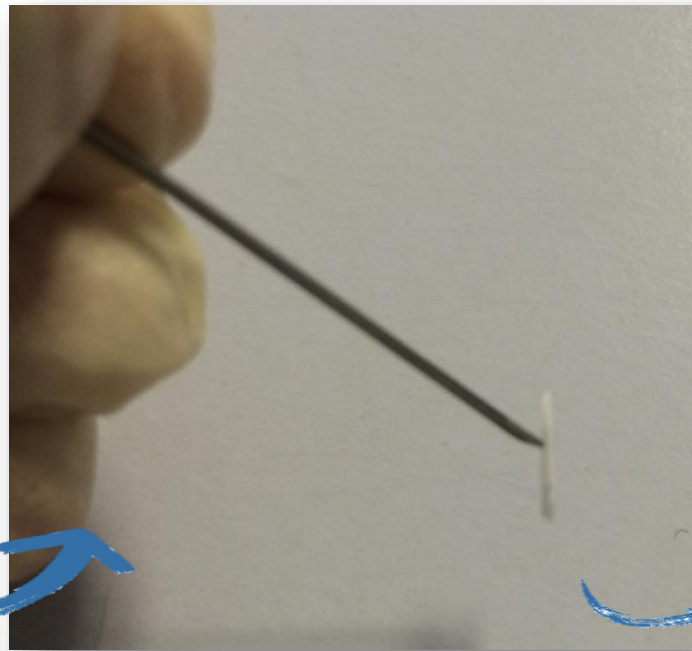
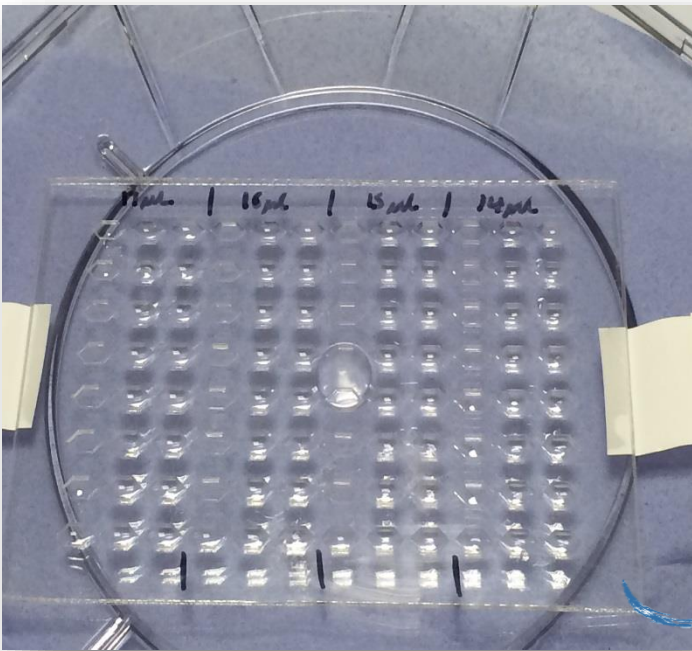
Several factors were taken into consideration, such as the mechanical properties of the dried material and the interactions with the material of the container.





Pick-and-place applications (2)

Small cylinders

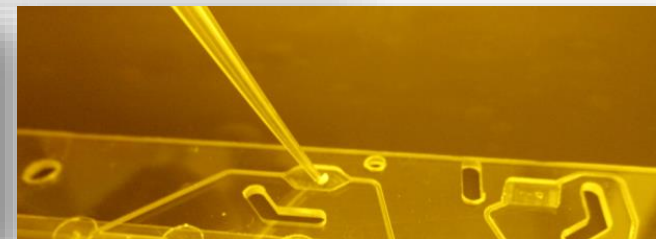
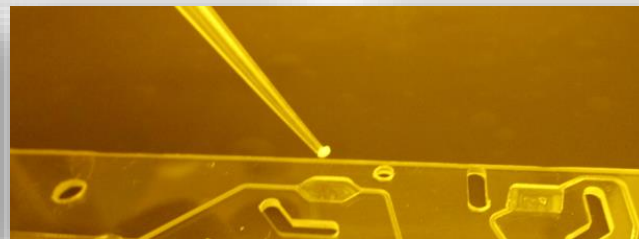
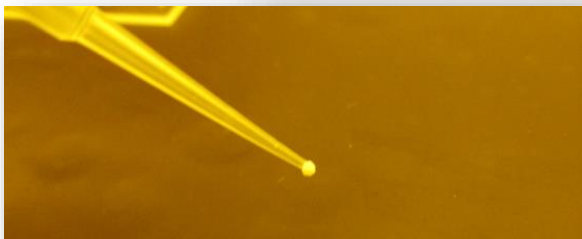
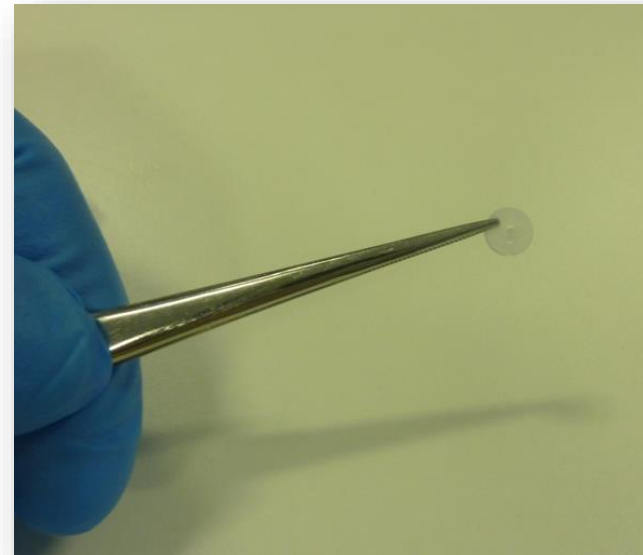
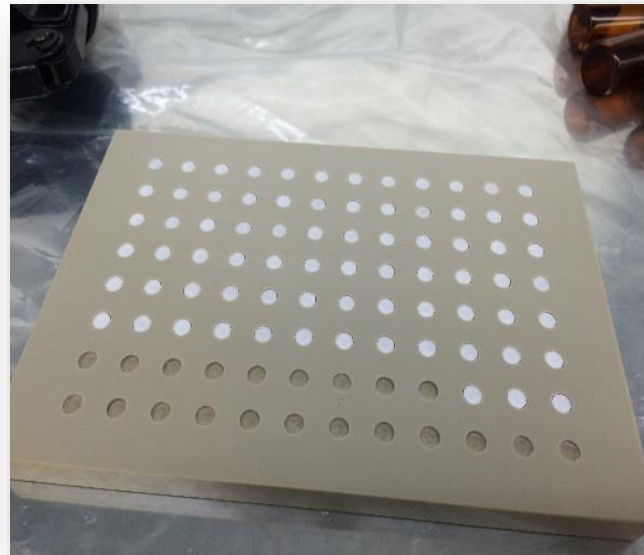




Pick-and-place applications ⁽³⁾

Custom-designed wells to control form factor

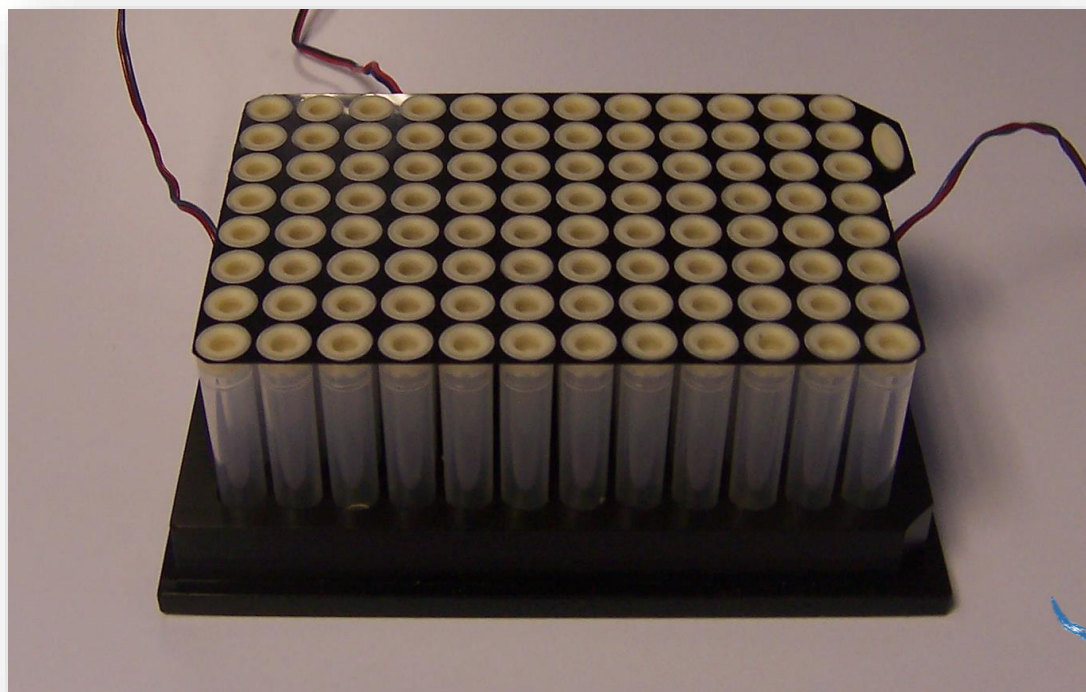
Plastic well plates built up from different numbers of layers of different materials with hydrophilic / phobic properties, different adhesives, in order to control form / shape of cakes





Sealable plastic tubes in 96-well format

Top “mat” of stoppers in 96-well matrix is fixed in place in the lyo



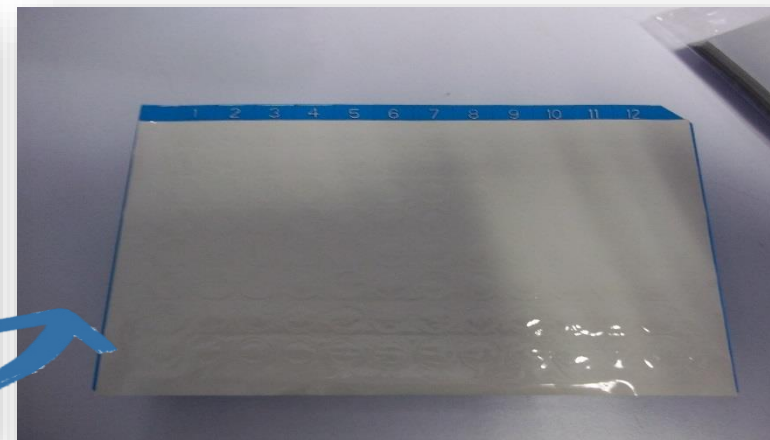
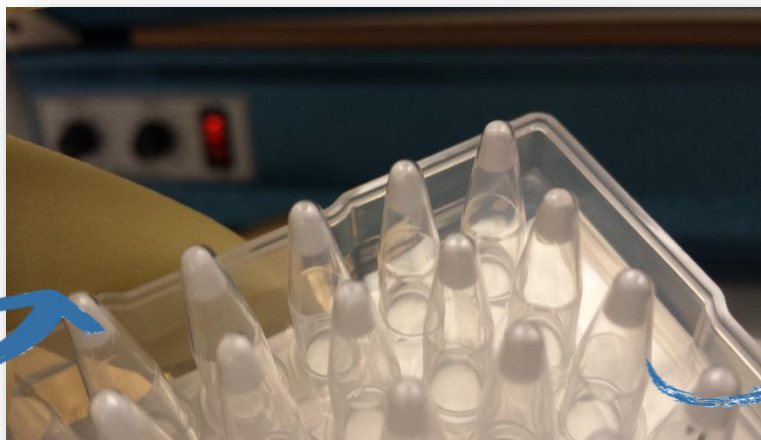
After drying, tubes were sealed in vials for long term moisture testing





Traditional 96-well plate format

BTL investigated various plastics, seals, well shapes



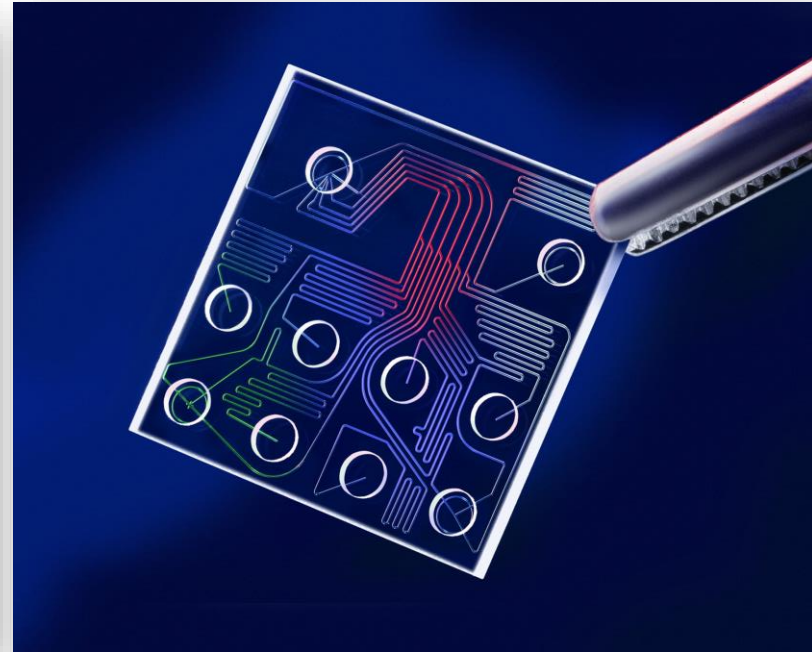
*96 of these wells fitted into a plate for freeze-drying.
They have an aluminium base for better heat transfer.*

*After drying, they were removed and each one placed individually into a cartridge for PCR.
Here, we sealed them in vials under dry N2 for a stability study.*



Low volume diagnostics

*BTL formulated and processed solutions to ensure loading is complete before the product can evaporate.
BTL successfully dried products with volumes in the range of a few microlitres.*





Biopharma Process Systems Ltd
Biopharma House, Winnall Valley Road,
Winchester SO23 0LD, UK

Switchboard +44 (0)1962 841092
web: www.biopharma.co.uk
Info: btl@biopharma.co.uk



CONSULTANCY

Dr Mattia Cassanelli
Technical Manager - Consultancy

Clara Ip
Business Development Executive



INSTRUMENTS

Joshua Robinson
Technical Manager - Instruments

Ian Blackham
Business Development Executive



TRAINING

Sally Potentier
Business Development &
Courses Executive