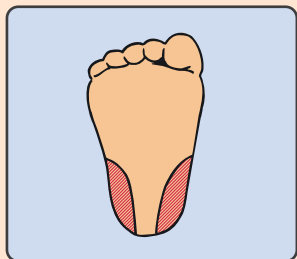
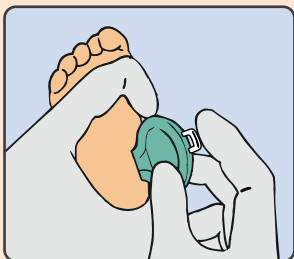


BD Quikheel™ Lancet



1 Identify the desired puncture site (within the shaded area), and make sure it is properly cleansed according to your organisation's policies and procedures.



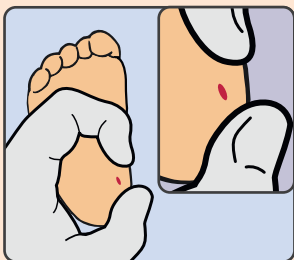
2 With gloved hands, position the BD Quikheel™ Lancet against the puncture site. As long as the correct site is chosen the Lancet can be placed in any orientation on the foot.



3 To activate, firmly and completely depress the trigger with your index finger.



4 After triggering, remove the Lancet and dispose of it in an approved sharps container. **DO NOT REUSE.**



5 Gently wipe away the first drop of blood with sterile gauze and collect the specimen according to your organisation's policies and procedures.

Select the Lancet Best Suited to Your Needs

The gentle, safe blood-sampling device designed for heel-sticks in premature infants, newborns and babies

BD Quikheel™ Premie Lancet

Catalogue number: 368102

- Depth: 0.85 mm
- Blade: 1.75 mm
- Packaging: 50/Box, 200/Case



BD Quikheel™ Infant Lancet

Catalogue number: 368103

- Depth: 1.0 mm
- Blade: 2.5 mm
- Packaging: 50/Box, 200/Case



www.bd.com/europe/safety
bdukvacutainer@europe.bd.com

CAUTION: Handle all biologic samples and blood collection “sharps” (lancets, needles, luer adapters and blood collection sets) according to the policies and procedures of your organisation. Obtain appropriate medical attention in the event of any exposure to biologic samples (for example, through a puncture injury), since samples may transmit viral hepatitis, HIV (AIDS) or other infectious diseases. Utilise any safety-engineered feature if the blood collection device provides one. Discard all blood collection “sharps” in biohazard containers approved for their disposal.

BD Quikheel™ Lancet User Guide, EA, 040512, 01, EN

BD, BD Logo and all other trademarks are the property of
Becton, Dickinson and Company. ©2020 BD CSD2791



Becton, Dickinson U.K. Limited
Registered in England: 00852702
Registered Office:
1030 Eskdale Road,
Winnersh Triangle,
Wokingham,
RG41 5TS
Tel: 0800 917 8776
www.bd.com