



# STAR NAVIGATOR

## SNAP UP OUR STAR OFFERS!

### Grilled Squid

Grilled Squid served with Chilly Garlic sauce and Steam Rice for only SGD 18 / Genting Points 16

Available in Blue Lagoon, Deck 11 Aft

### Charlie Package

Get all of these for only SGD 85

- Cake Decoration
- Pizza Making Class
- Ice Cream with Balloon Twisting Class
- Cake Pops and Chocolate Workshop
- Bridge Tour
- 1 hour stay at Child Care Centre

Available at the Child Care Centre, Deck 11 Aft  
\*Terms and Conditions Apply

### Superstar Gemini

Penang, Malaysia

11 September 2017, Monday

Arrival: 4:00pm

Departure: 11:59pm

Sunrise: 7:11am

Sunset: 7:20pm

### Ships Information:

- Made in France 1992, refurbished in 2012
- Previously named as Norwegian Dream
- Entered Star Cruises Fleet on 28th December 2012.
- Gross Tonnage: 50,764
- 13 Decks

## MID-DAY SALE

### Up to 50% Off on Selected Items

1:00pm - 2:30pm  
at Hot Spot Duty Free, Deck 9 Mid

### Stay Connected with your friends & family



Available Onboard  
with minimal charges

### Penang, Malaysia

Pulau Pinang or Penang is one of the unique and attractive places in Malaysia with its many cultures which make Penang one of tourist's favorite places and tourists attractions. Basically, Penang is famous for their food, religions, cultures and tourism site. According to the UNESCO Worlds Heritage Site of Georgetown says that there are many religions, cultures and foods in Penang, therefore they can blend it well together to make Penang one of the well-known states in Malaysia.

## STAR NAVIGATOR shows you the way

**TODAY'S THE DAY!**  
Sail with us on a journey of discovery into a world of activities galore

**FOR YOUR DINING PLEASURE**  
Sweet, Savoury and Scrumptious take your taste buds on a trip around the world with our guide to global dining

**IMPORTANT NOTICE**  
Stay Safe! We're committed to the safety and comfort of all passengers and strongly recommend the reading of important notices concerning our destinations, customs, late check-outs, WiFi onboard, our cashless system and of course safety drills... and more

# TODAY'S THE DAY!



TIME	PROGRAM	VENUE	DECK
<b>ACTIVITIES ARE SUBJECT TO CHANGE WITHOUT PRIOR NOTICE</b>			
<b>MORNING</b>			
9:00am - 1:00am	<b>Book for Animal Toy Ride at....</b>	<b>Child Care Centre</b>	<b>11 Aft</b>
9:00am - 11:30am	* Last Chance to Register for Captain's Bridge Tour Pre-selling of Superstar Gemini Lottery & Lucky Star Tickets	Activity Centre	10 Fwd
9:00am - 12:00mn	Sudoku, Word Search etc. are available at the...	Activity Centre	10 Fwd
9:00am - 2:00pm	<b>Book your Tour for Penang and Kuala Lumpur now at the....</b>	Shorex Counter	7 Mid
9:00am - 5:00pm	<b>"DREAMGIRLS" in Paradise Hotel Adult Show Tickets are available at the...</b>	Activity Centre	10 Fwd
9:00am - 5:00pm	<b>*Register now for Galley Tour with Sushi Making, Captain's Bridge Tour, Magic Class with Sophie, Gemini Dance Package (Fitness Class, Bachata and Belly Dance Class) (Maximum of 30 guests)</b>	Activity Centre	10 Fwd
9:30am - 10:15am	ABC Line Dancing	Oceana	12 Fwd
10:00am - 10:45am	Game Show: Tackiest Tourist (ASEAN Edition)	Stardust Lounge	10 Fwd
10:00am - 10:45am	Mid-Autumn Arts and Crafts: Paper Rabbit Making	IR Lounge	10 Mid
10:15am - 10:45am	Towel Volleyball	Topsider Pool	11 Mid
10:15am - 11:00am	Celebrity Heads	Oceana	12 Fwd
10:45am - 11:30am	Jenga Challenge	IR Lounge	10 Mid
11:00am - 11:45am	Unlimited Challenge with your Cruise Staff	Stardust Lounge	10 Fwd
11:00am - 12:00nn	Wet and Wild Party (Be ready to get wet!)	Topsider Pool	11 Mid
<b>11:00am - 11:45am</b>	<b>SuperStar Gemini Jackpot Bingo SGD28,888 (Pre-selling starts at 10:00am)</b>	<b>Oceana</b>	<b>12 Fwd</b>
<b>11:30am - 12:00nn</b>	<b>Birthday Bash (For Invited Guests Only) Meet and Greet with the Hotel Management</b>	<b>Observatory/KTV</b>	<b>12 Fwd</b>
<b>AFTERNOON</b>			
12:30pm - 1:30pm	Movie Time: Tom and Jerry's Giant Adventure (English Movie with Chinese Subtitle)	Stardust Lounge	10 Fwd
12:45pm - 1:30pm	Korean Beauty Revealed (Product Talk by our Beauty Therapist)	Oscar Salon	12 Fwd
<b>1:00pm - 2:30pm</b>	<b>Mid-Day Sale - Up to 50% Off on Selected Items</b>	<b>Hot Spot Duty Free</b>	<b>9 Mid</b>
1:15pm - 2:00pm	*Cake Pops Making and Chocolate Workshop for Kids	Child Care Centre	11 Aft
1:15pm - 2:00pm	List O' Rama	IR Lounge	10 Mid
<b>1:30pm - 2:15pm</b>	<b>SuperStar Gemini Jackpot Bingo SGD30,888 (Pre-selling starts at 1:00pm)</b>	<b>Stardust Lounge</b>	<b>10 Fwd</b>
1:45pm - 2:30pm	K-Pop Dance Class	Activity Centre	10 Fwd
2:00pm	Chinese Tea Demonstration	Observatory/KTV	12 Fwd
2:00pm - 3:00pm	Bazaar Sale - Up to 40% Off	Tea Corner	9 Mid
2:00pm	Superstar Gemini SGD8,888 Jackpot Lottery Draw	Hot Spot Duty Free	9 Mid
<b>2:30pm - 3:15pm</b>	<b>Showtime: The Crew</b>	IR Lounge	10 Mid
2:45pm - 3:30pm	Towel Folding Demonstration	<b>Stardust Lounge</b>	<b>10 Fwd</b>
4:00pm	Guest Joining Organized Tour in Penang Assembly	Observatory/KTV	12 Fwd
		Stardust Lounge	10 Fwd
<b>EVENING</b>			
7:00pm - 9:00pm	Movie Time: Battle of Memories (English Movie with Chinese Subtitle)	Stardust Lounge	10 Fwd
10:00pm - 12:00mn	<b>"DREAM GIRLS" in PARADISE HOTEL Adult Show Tickets are available at the...</b>	Activity Centre	10 Fwd
<b>10:30pm</b>	<b>Passenger Make Up Safety Briefing / Mandatory Safety Briefing for Newly Embarked Guests</b>	<b>Muster Station</b>	<b>Deck 7</b>
12:15am - 2:55am	Movie Time: Kong Skull Island <i>All activities with asterisk symbol (*) are pre - registration required with minimal charges apply.</i>	Stardust Lounge	10 Fwd

## MUSICAL ENTERTAINMENT - MUSICIANS FROM THE PHILIPPINES

**Class of Six Band**  
Oceana, 12 Mid

11:30pm - 12:15pm  
12:30pm - 1:15pm

**Sound Clippers Band**  
Oceana, 12 Mid

9:15pm - 10:00pm  
10:15pm - 11:00pm

**Pianist Raz**  
IR Lounge, 10 Mid

9:00pm - 9:45pm  
10:00pm - 10:45pm

**Brown Republic Trio**  
IR Lounge, 10 Mid

11:00pm - 11:45pm  
12:00mn - 12:45am

# FOR YOUR DINING PLEASURE

## Inclusive Restaurants

**Mariners Deck 9 Mid**  
**International & Indian Cuisine**  
**(Pork and Lard Free)**

Breakfast: 8:00am - 10:00am  
 Supper: 9:30pm - 12:00mn

**Dynasty Deck 11 Aft**  
**Chinese Buffet**

Morning Tea: 10:00am - 11:00am  
 Lunch: 12:00nn - 2:00pm  
 Afternoon Tea: 3:00pm - 4:00pm  
 Supper: 9:00pm - 11:00pm  
*Chinese Buffet with Congee Station*

## A la Carte Restaurants

**Bella Vista Deck 9 Aft**  
**Western Cuisine**  
**Serving Indian Cuisine Family Style**

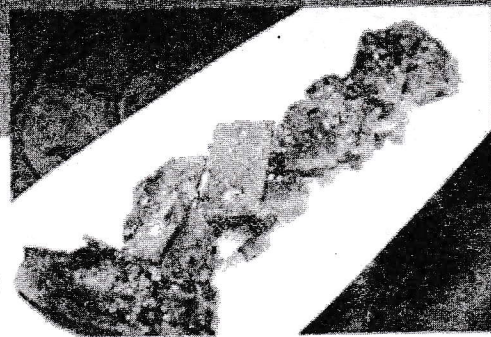
Breakfast: 8:00am - 10:00am  
*Western (Continental) & Chinese Buffet*

Lunch: 12:00nn - 2:30pm  
*Western Semi Buffet & Indian Cuisine*

Dinner: 6:00pm - 9:00pm  
*Western Semi Buffet*

**Blue Lagoon Deck 11 Mid**  
**Cabin Service - Please call: 11811**  
**All Day Dining / 24 Hours Open**

**Taipan Deck 11 Aft**  
**Chinese A La Carte & Steamboat**  
**Extension No. 11911**  
 Lunch: 12:00nn - 2:00pm



## Important Notice:

Allocation of tables is on "First Come, First Served" basis and seating will be given to the exact number of dining guests only. Please be seated after receiving a table number from the Hostess.

Please note that you maybe requested to share table during Restaurant peak hours to accommodate other guests.

A second meal in another Inclusive. Restaurant during the same meal period is chargeable.

# OUTLETS & FACILITIES Relax to the MAX!

FOOD AND BEVERAGE OUTLET	NUMBER	DECK	OPERATIONAL HOURS
Observatory Lounge / KTV	12504	12 Fwd	6:00pm - 3:00am
Champ's Bar	12603	12 Mid	10:00am - 2:00am
Topsider	11820	11 Mid	9:00am - 2:00am
IR Lounge	10720	10 Mid	10:00am - 3:00am
Rendezvous Bar	9704	9 Mid	9:00am - 2:00am

## GENERAL INFORMATION

OUTLET	NUMBER	DECK	OPERATIONAL HOURS
Medical Centre	22	6 Fwd	9:00am - 11:00am / 3:00pm - 4:00pm / 7:00pm - 9:00pm
	Aside from above schedule, please call 00 for any medical assistance		
Reception	00	7 Mid	Open 24 Hours
Emergency	21		Open 24 Hours
Oscar's Salon	12505 (For Reservation)	12 Fwd	9:00am - 1:00am
Gymnasium		12 Fwd	7:00am - 1:00am
King Neptune Health Club	12515 (For Reservation)	12 Fwd	9:00am - 1:00am
Mahjong Room		12 Fwd	9:00am - 5:00pm / 9:00pm - 12:00mn
Topsider Pool		11 Mid	8:00am - 10:00pm
Hot Spot Watches & Jewellery Shop		11 Aft	12:00nn - 3:00pm
Hot Spot Toscow Jewellery Shop		11 Aft	9:00am - 4:00pm / 8:00pm - 12:00mn
Star Boutique		11 Aft	9:00am - 4:00pm / 8:00pm - 12:00mn
Child Care Centre		11 Aft	9:00am - 4:00pm / 10:00pm - 12:00mn
Activity Centre		10 Fwd	9:00am - 5:00pm / 10:00pm - 12:00mn
Hot Spot Duty Free Shop		9 Mid	9:00am - 4:00pm / 8:00pm - 1:00am
Port O'Call		9 Aft	9:00am - 4:00pm / 8:00pm - 1:00am
Photo Gallery		9 Mid	9:00am - 11:00am / 12:00nn - 3:00pm / 9:00pm - 11:00pm
Swimming Pool		9 Aft	8:00am - 10:00pm
Shorex Counter		7 Mid	9:00am - 2:00pm

# IMPORTANT NOTICE Please take a moment... to read this

## IMPORTANT NOTICE FROM SINGAPORE CUSTOMS

There is no GST / Duty Free concession on  
**Liquors, Cigarettes and other Tobacco Products.**

## CABIN UPGRADE

Upgrade your cabin to our Balcony or Suite and get a Dining Credit of SGD50 per cabin per night. Cabin Upgrades are subject to cabin availability. Please contact Reception on Deck 7 Midship or dial extension "00" for more details.

*"This is not applicable for Suite Promotion and bookings made under Memberships"*

## WI-FI FACILITY ON BOARD

Wi-Fi facility is available onboard.

How to Log-in:

Step 1: Connect to "SSGemini" WIFI.

Step 2: Open your internet browser (i.e. Chrome, Safari) then, key-in website "ssg.com".

Step 3: Enter 4 digit cabin number and birthday. Then, click "Log-in"

Step 4: Buy internet by choosing on the plan package which will be automatically charged to your own account.

*\*For guest holding vouchers, please choose voucher and key in the voucher number.*

Step 5: Click "Buy" to confirm your plan purchase.

*\*To Re-login, enter your 4-digit cabin number and your birthday then click Let's Go!*

## WMS INTERNATIONAL ROAMING SERVICE NOTICE

### **"Cellular at Sea" GSM roaming and 3G service onboard**

The international roaming services of your phone including Voice and Data may automatically connected during cruising.

All charges are determined by your mobile service provider and will be billed to you on your regular phone account.

If you do not wish to use this service, switch your device in airplane mode and enable Wi-Fi or switch off your mobile phone while at sea.

## SAFETY POLICY

- Smoking is one of the most common causes of fire at sea. Smoking in bed and throwing of cigarette butts overboard is strictly prohibited.
- Burning incense, lucky paper and similar items in your cabin is extremely dangerous and strictly prohibited.
- Use of any heating devices such as flat iron, water heater, etc. is strictly prohibited.
- Do not sit or lean over the barriers, hand rails or railings.

## IMPORTANT NOTICE

Please be informed that bringing of any alcoholic beverages (Bottles/Cans of Spirits / Wines / Beers)on-board is prohibited as stipulated in your booking confirmation slip. It is permissible to bring alcoholic beverages into Singapore as long as it is declared at the Customs Office prior to the luggage x-ray and exiting of the terminal.

Tax will be imposed depending on quantity and alcoholic content.

**For the safety of the ship, guests and crew as well as concerns for privacy operation or use of any remotely controlled or autonomously flying devices, toys or drones onboard or in the vicinity of the ship is strictly prohibited.**

## IMPORTANT NOTICE FOR PENANG, MALAYSIA

We will be arriving in Penang at approximately 4:00pm and disembarkation will ONLY commence once clearance is obtained from the local authorities. There may be some waiting time which is subject to the process of Immigration arrival clearance.

**Guests Joining Tours** – Please assemble at the Stardust Lounge, located on Deck 10 Fwd. Kindly refer to the assembly timing indicated on your tour ticket. Please hold your tour ticket and own access card when disembarking the ship.

**Guests going ashore Free & Easy** – To facilitate a smooth disembarkation, please wait for further announcement. The vessels the right to depart without waiting for late arriving guests. Please remember to bring along your cabin card when disembarking the ship. **All guests must be back on-board the ship before 11:00pm ship's time.** Please be reminded to bring your own access card when disembarking the ship.

Guests are reminded to take extra care and caution when walking within the ports, outside the ports and during shore excursion as some of the tourist areas may be covered with dirt, grass, gravel, slopes and uneven ground due to development. Please be careful when eating out. Don't consume food or drinks prepared in an unclean environment.

**All timing stated in the Star Navigator is following the Ship's time.**