

PRINCESS PATTERN

Your daily guide to life at sea

Okinawa Mon. August 22, 2016 • Golden Princess • Tonight's dress: smart casual

Weather: Today's Forecast: Cloudy – High: 32°C / 90°F Low: 28°C / 83°F • Sunrise: 6:05am / Sunset 6:59pm
 Tomorrow's Forecast: Cloudy – High: 32°C / 90°F Low: 28°C / 81°F

Today's Events Highlights



Crab Shack**

11:30am-1:30pm • Crown Grill, Deck 6 Fwd



Bubbly Art Auction

10:30am • Explorers Lounge, Deck 7 Midship



Movies Under the Stars

7:15pm & 10pm • Decks 14 & 15 Midship



Cabaret Showtime • Kikyo Brothers

10:00pm • Princess Theatre, Decks 6 & 7 Fwd

Okinawa Immigration Inspection Schedule

In Okinawa today, all guests must attend an immigration inspection in the terminal and we expect this inspection to take approx. 2 hours. When going ashore today, you must present your Customs declaration to the Customs Officials (one per family) and a copy of your Passport for Immigration.

Group	Meeting Locations	Time
Princess organized tours	Bernini Dining Room, Deck 5 Midship	as per ticket
Japanese Guest	Wheelhouse Bar, Deck 7 Aft	1:00pm
International Guests (Hong Kong)	& non charter guests)- Vista Lounge, Deck 7 Aft	1:20pm-2:30pm
1,2,3,4,5,6,7	Princess Theater enter via Deck 7	1:35pm
8,9,10,11,12,13,14,15,16,17,18	Princess Theater enter via Deck 7	1:45pm
19,20,21,22,23,24,25,26	Princess Theater enter via Deck 7	2:00pm
27,28,29,30,31,32,33,34,35,36	Princess Theater enter via Deck 7	2:10pm
37,38,39,40,41,42,43	Princess Theater enter via Deck 7	2:20pm
44,45,46,47,48,49,50,51,52,53	Princess Theater enter via Deck 7	2:30pm
54,55,56,57,58,59,60	Princess Theater enter via Deck 7	2:35pm
61,62,63,64,65,66,67,68,69,70,71	Princess Theater enter via Deck 7	2:40pm

10:30pm – All Aboard. Golden Princess sails for Ishigaki, Japan shortly thereafter.

Important Immigration Information

Please note all guests are required to attend the immigration inspection ashore before 3:00pm. Failure to do so would result on being detained onboard for the rest of our up coming Japanese port.

Find your new favorite something.



Refreshing Morning

- 6:00am-
Noon **Wake Show with your Chinese Entertainment Hosts** Stateroom TV Channel 21
- 8:15am **Free Stretch & Abdominal Muscles Workout class with Fitness Instructor Jack** Fitness Centre, Deck 15
- 9:00am **Free Footprint Examination and Analysis** Suffering from back, hip or knee pain? Your footprint could hold the answer. Free foot examination and analysis with Fitness Instructor Jack. Lotus Spa, Deck 15 Fwd
- 9:00am *In the Piazza* **Line Dancing** Learn how to line dance like an expert. Even if you have two left feet you are guaranteed a lot of fun whilst making friends with your fellow dancers. Deck 5 Midship
- 9:00am-
Arrival **Princess Duty Free Shops - LAST CHANCE!** Receive 10% Off with your purchase of \$100 or more. Boutiques Decks 5, 6 & 7 Midship
- 9:15am **Speed Sudoku** With the Cruise Director's Staff. Wheelhouse Bar, Deck 7 Aft
- 9:15am **Spa Special Treats Only Today** Elemis French luxurious brand La-therapies, New York, Bliss facial body Phyto hair products buy over \$150 get 15% off. Deck 7 Spa Retail Tables
- 9:30am **Complimentary Basic Digital Photography Seminar** Join your master photographer Emma and learn how to make the most of your snapshots! Platinum Studio, Deck 15 Aft
- 9:30am **Ladies Pamper Party** Join the Spa team today for the interactive ladies only event. All ladies that attend will receive the following: ELEMIS DYL mini facial, collagen eye treatment, collagen neck treatment. Lotus Spa, Deck 15 Fwd
- 9:30am *movies under stars* **French Festival Movie - Ratatouille** (G 1hr • 51 mins.) Decks 14 & 15 Midship
- 9:45am **Wii@Sea: Sports Challenge** Join your Cruise Director's Staff for some digital gaming fun. Vista Lounge, Deck 7 Aft
- 10:00am *In the Piazza* **Runway at Sea Fashion Show** Join us and get a sneak peek at our latest fashions! Enter to win a \$50 Gift Certificate. Deck 5 Midship
- 10:15am **Arts and Crafts Class** With the Cruise Director's Staff. (Limited space available) Wheelhouse Bar, Deck 7 Aft
- 10:30am **Effy Emerald Unveiling & Raffle** Join us for the unveiling of this rare and beautiful gemstone. Enter to win a Effy jewelry bay! Meridian Bay, Deck 7 Midship
- 10:30am **Bubbly Art Auction** Grab a glass of free sparkling wine and enjoy the thrill of a live art auction event with up to 40% savings off all works of art. Explorers Lounge, Deck 7 Midship

- 10:30am **French Festival - Language Class (Mandarin Only)** With the Cruise Director's Staff. Vista Lounge, Deck 7 Aft Princess Pick
- 10:45am *In the Piazza* **Creative Towel Folding Demonstration** Join the Accommodation Staff and Cruise Director's Staff for this creative demonstration. Deck 5 Midship
- 10:45am **Free Health Seminar: Relieving Back, Waist and Knee Pain** We have the answer to an easy and painless solution without changing your lifestyle. Relieving back pain through better body alignment and posture. (No medication). Lotus Spa, Deck 15 Fwd
- 11:00am **Welcome Aboard Photo Raffle Extravaganza** Purchase any photo or package and receive a FREE raffle ticket for a chance to win FREE photos and more! (Must be present to win) (Photo/Video Gallery, Deck 7 Aft) Raffle will commence at 11:00am
- 11:15am **Fancy Dress Raffle Drawing** Come view your photos, and see if you are a winner in the Portrait Raffle Drawing! You must be present to win. Photo/Video Gallery, Deck 7 Aft
- 11:00am-
1:00pm **Effy Free Gift with Purchase** Receive a free jewelry pendant with purchase in the Boutiques. Stop by any boutiques store for details. Meridian Bay, Deck 7 Midship
- 11:15am *In the Piazza* **Paper Plane Challenge** Can your plane fly straight? With the Cruise Director's Staff. Deck 5 Midship
- 11:30am **Name That Melody Gameshow** Fun with your Cruise Director's Staff. (Mandarin Only) Vista Lounge, Deck 7 Aft Princess Pick
- 11:30am *movies under stars* **Cirque du Soleil: Alegria** (NR 1hr • 30 mins.) Decks 14 & 15 Midship
- 11:15am-
12:15pm **Karaoke Power Hour** If you're good that's great. If you're bad it's even better! With the Cruise Staff. Wheelhouse Bar, Deck 7 Aft
- 11:45am *In the Piazza* **Ballroom and Latin Dance Class** With the Cruise Director's Staff. Deck 5 Midship

Relaxing Afternoon

- 12:15pm *In the Piazza* **Piazza Performance with Wheel Sensation** Deck 5 Midship
- 12:45pm *In the Piazza* **Peer Factor** Our newest game show! (Sign up at 12:30pm). (English & Mandarin Only) Deck 5 Midship
- 1:00pm **Sail-In Tunes with DJ Fever** (Weather permitting) Neptune's Reef & Pool, Deck 14 Midship
- 1:15pm **Hole in One Competition** With your Cruise Directors Staff. Princess Links, Deck 16 Midship
- 1:30pm (Approx.) **Golden Princess is scheduled to arrive in Okinawa, Japan**
- Arrival **Photos With The Golden Princess Sailors** Be on the lookout for our photographers as you disembark the ship, to capture the special moments of your voyage!



Drink of the Day

Try our Drink of the Day,
Cranberry Mojito

Malibu, cranberry juice, fresh mint leave,
lime cubes, sugar syrup top with soda.

Ask your server • All bar locations

Future Cruise Planning

Get an up to \$300 per stateroom onboard credit on your next cruise — even if you haven't decided where to go next. Stop by the Future Cruise Planning office for details.

Deck 6 Forward, Portside

All-Inclusive Photography Package!

Early Bird Special SAVE \$50.00

Only \$78 for ALL of your photographs taken this cruise.

Valid for the first 48 hours of your cruise.

Take all your photographs now!!!

Photo & Video Gallery, Deck 7 Aft

Internet Connectivity

Due to location of the ship, satellite connectivity will be unstable. If you choose to go online there will be no refunds during this time period. Thank you!

Piazza, Deck 5 Midship

\$\$\$ Casino Vault

Do you have nerves of steel and a steady hand? If so, try to win our valuables secured in the casino vault. An amazing new game with chances to win cash prizes.

Casino • Deck 7 Forward



The Lotus Spa

Time To Relax

Contact the Lotus Spa for availability for:

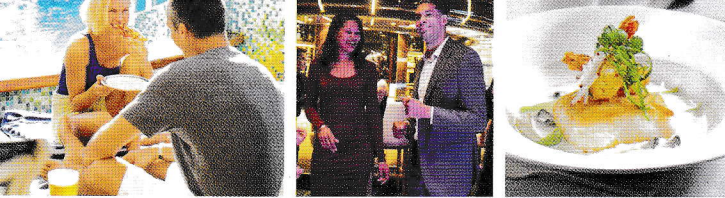
Hot Stone Massage

Bamboo Massage

Aroma Spa Seaweed Massage

Thai Herbal Poultice Massage

Lotus Spa, Deck 15 Fwd



come back newSM

- 2:00pm **Golf Chipping Challenge** Have some fun with your Cruise Directors Staff. (English & Mandarin)
Calypso Reef & Pool, Deck 15 Midship
- 3:00pm **movies under stars** **French Festival Movie - Hugo**
(PG • 2hrs 6 mins.) Decks 14 & 15 Midship
- 3:30pm-4:30pm **English Afternoon Tea**
Relax and enjoy afternoon tea with fresh berries & cream, scones and other indulgent treats. \$10 per person, \$20 per person with champagne. Please call the DINE Line 3463 before 12:00pm. Bernini Dining Room, Deck 5 Midship
- 3:45pm (Approx.) **Crew Emergency Drill**
At 3:45 today, alarms will sound and broadcasts will be made as the crew practices their Emergency duties. During this exercise, limited passenger services will be provided. Be advised that part of the exercise involves checking passenger staterooms to ensure they have been evacuated. If you will be onboard during the drill and prefer not to be disturbed, please display the "Privacy Please" notice prior to the start of the drill. Passengers remaining onboard are strongly encouraged to broaden their knowledge of maritime safety by watching Channel 40 of your stateroom television at 3:00pm. For the duration of the crew drill, we kindly request that passengers keep clear of the area outside of the Boat Deck.
- 5:00pm *In the Piazza* **Guitar Melodies with Ryu Yamakawa**
Deck 5 Midship
- 5:15pm **movies under stars** **Concert: Billy Joel: Live at Shea Stadium** (52min) Decks 14 & 15 Midship

Enchanting Evening

- 6:00pm *In the Piazza* **Evening Melodies with Antoni Wcislo**
Deck 5 Midship
- 6:00pm-8:00pm **Pre-Recorded Ballroom Music**
Explorers Lounge, Deck 7 Midship
- 6:15pm **movies under stars** **Concert: Muse - A Seaside Rendezvous** (59min) Decks 14 & 15 Midship
- 6:45pm *In the Piazza* **Guitar & Vocal Entertainer Laurier Lachance** Deck 5 Midship
- 7:00pm **Family Disco** Inviting all parents grandparents kids and kids at heart to dance their socks off!
Skywalkers Nightclub, Deck 17 Aft
- 7:15pm **movies under stars** **Batman v Superman: Dawn of Justice** (PG-13 • 2hr 31min) Decks 14 & 15 Midship
- 7:30pm & 10:00pm **Evening Movie: Deadpool**
(R • 1hr 48 mins) Vista Lounge, Deck 7 Aft
- 7:30pm *In the Piazza* **Piazza Melodies with Antoni Wcislo**
Deck 5 Midship
- 7:30pm-10:30pm **Casual Portraits Tonight!** Let us capture your cruise memories! Visit our studio setup in the Piazza. No sitting fees or obligation to purchase. Piazza, Deck 7
- 8:00pm-9:00pm **Karaoke Power Hour** If you're good that's great. If you're bad it's even better! With the Cruise Staff. (English & Mandarin) Explorers Lounge, Deck 7 Midship

- 8:00pm-10:00pm **Meet Your Art Director** Learn more about your onboard art auction program. Save up to , off of estimated retail prices only while onboard! Art Gallery, 5 Fwd
- 8:15pm *In the Piazza* **Music Melodies with the Golden Princess Orchestra** Deck 5 Midship
- 8:30pm **Dance the Night Away with Orpheo Trio**
Wheelhouse Bar, Deck 7 Aft
- 9:00pm **Free Health Seminar: Walking Pain Free with Good Feet** Come to find out if your feet are properly supporting your body and relieve joint pain.(No drugs)
Fitness Centre deck 15
- 9:00pm-10:00pm **Happy Hour - Buy 1, Get 1 for \$1**
Applies only to beverages \$10 and under.
Explorers Lounge, Deck 7 Midship
- 9:15pm *In the Piazza* **Cruise Cult Classic: 50's & 60's Rock n' Roll Dance Party** Join your Cruise Director's Staff as they take you back in time with the Hand Jive, Hula Hoop, Jitterbug and more. Music for dancing with Evolution. Deck 5 Midship
- 9:15pm **Passenger Feud Game Show** Can you match what our survey says? Fun with the Cruise Director's Staff.
Explorers Lounge, Deck 7 Midship (English & Mandarin) Princess Pick
- 9:30pm **Piano and Cocktails with Antoni Wcislo**
Wheelhouse Bar, Deck 7 Aft
- 10:00pm *In the Piazza* **Piazza Performance with Wheel Sensation** Deck 5 Midship
- 10:00pm **The Yes or No Game Show** Can you last 3 minutes without saying Yes or No? Join the Cruise Director's Staff to find out! (Mandarin Only) Explorers Lounge, Deck 7 Midship
- 10:00pm **SHOWTIME: Cabaret Showtime**
Kikyo Brothers
Princess Theatre, Decks 6 & 7 Fwd
- 10:00pm **movies under stars** **Batman v Superman: Dawn of Justice** (PG-13 • 2hr 31min) Decks 14 & 15 Midship
- 10:00pm **50's & 60's Disco Hits with DJ Fever** (must be 18 years or older) Skywalkers Nightclub, Deck 17 Aft
- 10:15pm *In the Piazza* **Groove to the Golden Princess Orchestra** Deck 5 Midship
- 10:30pm **All Aboard! Golden Princess sails for Ishigaki, Japan shortly after**
- 10:30pm-10:45pm **Music and Cocktail with Laurier Lachance**
Wheelhouse Bar, Deck 7 Aft
- 10:45pm-10:55pm **Dance the Night Away with Orpheo Trio**
Explorers Lounge, Deck 7 Midship
- 10:45pm *In the Piazza* **Piazza Performance with Wheel Sensation** Deck 5 Midship
- 11:00pm *In the Piazza* **Party All Night Long with Evolution**
Deck 5 Midship
- 11:00pm-11:30pm **Party All Night Long with DJ Fever** (must be 18 years or older) Skywalkers Nightclub, Deck 17 Aft

In the Piazza

9:15pm

Cruise Cult Classic: 50's & 60's Rock n' Roll Dance Party

Join your Cruise Director's Staff as they take you back in time with the Hand Jive, Hula Hoop, the Jitterbug and more.
Music for dancing with Evolution

Piazza, Deck 5 Midship
(English & Mandarin)

10:00pm

The Yes or No Game Show

Can you last 3 minutes without saying Yes or No? Join the Cruise Director's Staff to find out!

Explorers Lounge, Deck 7 Midship
(Mandarin Only)

Crab Shack

Experience our seafood extravaganza and enjoy our Chefs' delicious steamers and pots.
\$29 per person cover charge.
Reservations recommended.

11:30am-1:30pm • Crown Grill, Deck 6, Midship

PRINCESS CRUISES
PRESENTS

10:00pm

Cabaret Showtime

Starring:

Amazing Japanese Duo Jugglers

Kikyo Brothers

Princess Theatre, Decks 6 & 7 Fwd

Photography & Video Gallery – Deck 7 Aft
9am-Arrival & 7:30pm-11:30pm (Platinum Studio bookings available)

Boutiques – The Piazza, Decks 6 & 7

9am-Arrival

Casino – Deck 7 Forward

Casino opens at approximately 12:30am

Captain's Circle Desk – Deck 6 Fwd

9am-12pm & 6pm-8pm

Future Cruise Sales Desk – Deck 6 Fwd

9am-12pm & 6pm-8pm

Internet Café (Open 24 Hours) – The Piazza, Deck 5

Digital Communications Manager Available:

9am-12pm & 7pm-9pm

Library – The Piazza, Deck 5

Open 24 hours

Lotus Spa & Salon – Deck 15 Forward

Spa: 8am-10pm • Fitness Center: 7am-10pm • Dial 15222

Medical Center – Deck 4 Midship

9am-11am & 4:30pm-6:30pm For urgent medical attention dial 911

Princess Links (Lawn Court) – Deck 16 Midship

9am-9pm

Sanctuary – Deck 16 Forward

8am-12:30pm & 1pm-5:30pm

Shore Excursions – Deck 6 Midship

9:30am-11:30am & 7pm-8pm

Swimming Pool Hours:

Neptune's Pool - 7am to 5:30pm

Calypso Pool - 7am to 11pm • Children must be supervised by an adult at all times.

The Sports Court – Deck 16 Aft

9am-6pm

Youth & Teen Centers – Fun Zone, Deck 15 Fwd

Port Day: 1:30pm-5pm • Evening Activities 7pm-7:45pm

Family Disco Remix 7pm-Until Late • 7:45pm-10pm Activities

Dining Guide

Venue	Location	Hours
Bernini	Deck 5 Midship	Dinner: (Open Seating) 5:30pm-9:30pm
Donatello	Deck 6 Midship	Lunch: 11:30am-1:30pm Dinner: (Open Seating) 6:00pm-10:00pm
Canaletto	Deck 6 Aft	Breakfast: 7:30am-9:30am Lunch: 11:30am-1:30pm Dinner: (Open Seating) 6:00pm-10:00pm
Sabatini's**	Deck 7 Aft	5:30pm-10:00pm
Crown Grill**	Deck 6 Fwd	5:30pm-10:00pm
International Café	Deck 5 Midship	24 Hours
Horizon Court	Deck 14 Aft	Continental Breakfast: 5:00am-6:00am Breakfast: 6:00am-11:30am Lunch: 11:30am-3:30pm Express Noodle Station: 12:00pm-2:00pm Light Snack: 3:30pm-5:30pm Dinner: 5:30pm-1:00am
Prego Pizzeria	Deck 14 Fwd	11:00am-4:00pm & 8:00pm-12Midnight
Lobster Grill**	Deck 14 Fwd	11:00am-4:00pm & 8:00pm-11:00pm
Sundaes Ice Cream Bar	Deck 14 Midship	11:00am-4:00pm & 8:00pm-11:00pm

**Additional charges apply.

As a courtesy to our fellow guests, shorts are not permitted in the restaurants at dinner. Thank you for your understanding.

Bars, Clubs & Lounges

Cocktail of the Day: Cranberry Mojito

Venue	Location	Hours
Vines Bar	Deck 5 Midship	10:00am-4:00pm
Lobby Juice Bar	Deck 5 Midship	8:00am-Late
Promenade Bar	Deck 7 Midship	10:00am till 2:00pm & 7:00pm till Late
Explorers Bar	Deck 7 Midship	9:30am-1:30pm & 6:00pm till Late
Wheelhouse Bar	Deck 7 Aft	6:00pm till Late
Calypso Bar	Deck 14 Midship	6:00am-Midnight
Tradewinds Bar	Deck 15 Fwd	10:00am till 4:00pm
Skywalkers Nightclub	Deck 17 / 18 Aft	10:00pm till Late

Passengers under 18 years of age will not be served alcoholic beverages nor are they to consume alcoholic beverages. Please understand that you may be requested to show identification indicating date of birth.

Shore Excursions: Office hours: 9:30am-11:30am & 7pm-8pm – Deck 6 Midship

For last minute sales visit the Shore Excursion desk during opening hours this morning to make your experience in Okinawa even more memorable.

Please be advised that Ishigaki is a small island there is no much to do independently we strongly suggest that you book the Highlights of Ishigaki:

A delightful assortment of activities introduces you to the wonders of Ishigaki. Visit Tojin Tomb, a memorial to Chinese sailors who perished at sea. Enjoy sparkling Kabira Bay beach and a glass-bottom boat tour, capture picturesque views from the Tamatorizaki Observatory and savor locally made sugar cane candy.

Ship's Security Notice

In order to prevent unauthorized persons boarding the ship, you are required to carry your "Cruise Card" with you when going ashore. You will be asked to produce this at the gangway when you leave and return to the ship. Please ensure that you also have a government-issued picture ID with you before leaving the ship as you may be required to show this at security checkpoints upon your return. Do not accept or bring onboard any parcels or packages from strangers. Before boarding, you may also be asked by our security staff to open parcels or handbags which you are carrying.

Security Screening

All passengers returning to the ship must pass through security screening. Objects containing metal such as mobile phones, cameras, binoculars, reading glass cases, large belt buckles, batteries, electrical devices, etc. will cause the walk through metal detector to alarm and delay entry onto the ship. Such items need to be placed into the trays provided before you pass through the metal detector. Passengers with, for example, surgical metal implants, large amounts of metal jewelry, metal shoe stays, etc. may need to undergo further screening, e.g. hand-held metal detector or "Pat Search."

Public Health Reminder

To help maintain a healthy environment, please wash your hands frequently and thoroughly with soap for at least 20 seconds, and rinse them well. We strongly recommend that you follow this procedure each time you use the restroom, after coughing or sneezing and before eating, drinking or smoking. Avoid touching your mouth. We also encourage you to use your private toilet facilities and not the public toilet unless absolutely necessary.

Emergency Numbers in Okinawa:

Ambulance: +81-98-868-9911

Fire: +81-98-868-9911

Police: +81-98-836-0110

For assistance shoreside:

Okinawa Ship's Agency Corp.

2F Naha Port Terminal 2-1, Tondou-cho,

Naha city, Okinawa 900-0035 - Japan

Cell: 81-90-3324-8