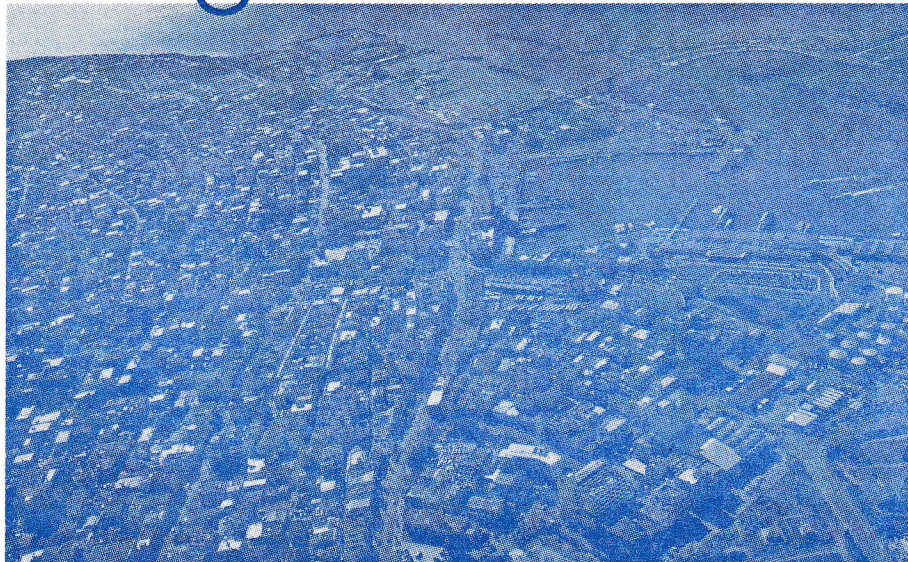





Ishigaki Port Guide



Ishigaki, Japan

Founded

Ishigaki City was originally founded in 1908 and elevated to city status in 1947.

Region

Ishigaki Island is the main island in the Yaeyama archipelago, which lies 260 miles west of the main island of Okinawa.

Population

48,816 (est. 2012)

Climate

Ishigaki is known for its humid, subtropical weather and 86°F temperatures that begin in May and continue on through December. Winters are mild and rarely dip below 60°F.

Language

Japanese

Some useful words

HelloKonnichi wa
 Yes.....Hai
 NoIie (ee-YUH)
 Please.....Dozo
 Thank youArigato gozaimasu
 Excuse meSumi masen
(Soo-me MAW-sen)
 Good morning ...Ohayou Gozaimasu
 Good afternoon..Konnichi wa

"Please take me back to Ishigaki Port" (in local language)

Ishigaki-ko ni tsurete-itte Kudasai

Currency

Japanese Yen (JPY)

A world away

For centuries, Ishigaki's natural beauty lay hidden away until a little black pearl put it on the map. Kokichi Mikimoto, the creator of the cultured pearl, began cultivating black pearls in Kabira Bay in 1914. About a hundred years later, the island received even more international attention when the Michelin Guide awarded the bay three stars. Today, this island paradise is a great escape for relaxation and discovery.

The gems of Ishigaki

The underwater world of Kabira Bay is home to rainbow-colored coral and beds of black pearls. Considered the most beautiful spot on the island, Kabira Bay is not suitable for swimming due to its fast moving current and jellyfish, so it's best appreciated from a glass-bottomed boat.

Ryukyu black pearls are coveted for their quality and beauty and Kabira Bay is only one of two spots in Japan where these gracious gems are cultivated. Learn more

about these lustrous beauties at the Ryukyu Black Pearl Center and enjoy shopping for pearls in the on-site store.

Island hopping

Ishigaki's neighboring islands also hold a world of unspoiled beauty worth exploring.

The tiny, ancient island of Taketomi is home to a beautifully preserved, traditional Ryukyu village. Discover traditional style, one-storied houses, surrounded by stone walls, covered with red tiled roofs and lion-like shiza statues that ward off evil spirits. See the sites by water-buffalo cart and visit Hoshizuna-no-hama, the famed glittering "star sand" beach.

The island getaway of Iriomote is famous for its wonderful mangrove forests, which make up much of Iriomote National Park, Japan's southernmost national park. Experience its beauty by jungle cruise on the Urauchigawa (Urauchi River) and a trek through the untamed trails.

Points of Interest

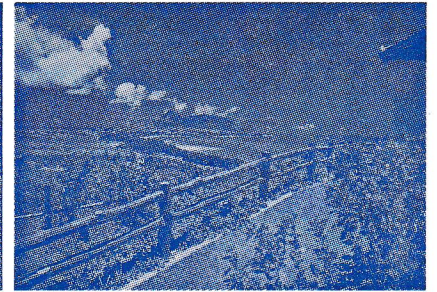
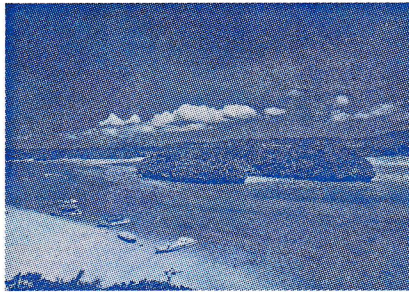
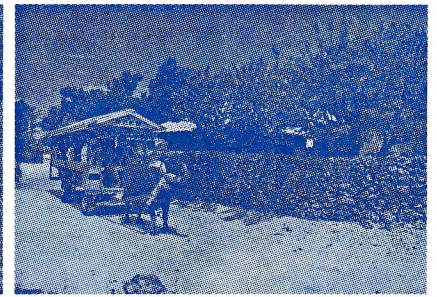
- 1 Kabira Bay
- 2 Tojin Tomb (Chinese Tomb)
- 3 Taketomi Island
- 4 Iriomote Island
- 5 Tamatorizaki Observatory
- 6 Local Crafts & Candy



East China Sea



Map not to scale



① Kabira Bay 川平湾

The beautiful, turquoise waters of Kabira Bay are one of only two cultivation sites of black pearls in Japan. A glass-bottom boat showcases the bay's colorful underwater world and coral reefs.

② Tojin Tomb (Chinese Tomb) 唐人墓

Honoring the memory of Chinese laborers killed during a sea mutiny in the mid-1800s, this ornately decorated monument raises awareness of this tragic occurrence, centered off the coast of Ishigaki.

③ Taketomi Island 竹富島

Board a ferryboat to this petite island, the site of a perfectly preserved Ryukyu village where traditional red-roofed architecture, local crafts and transportation by water buffalo cart are a way of life.

④ Iriomote Island 西表島

Okinawa's second largest island's dense vegetation, lush mangrove forests and Iriomote National Park welcome outdoor enthusiasts to kayaking, hiking and beach adventures.

⑤ Tamatorizaki Observatory 玉取崎展望台

Take in panoramic views of the ocean and colorful reefs, Cape Tamatori, Ibaruma Bay and the majestic hills of Ishigaki's northern peninsula from the observation deck of this popular photo spot.

⑥ Local Crafts & Candy 工芸品&名産品

The ingenuity of the Ishigaki people is showcased in their traditional crafts and local delicacies. Create "minsa" textiles, enjoy a sugar cane treat and shop for exquisite black pearl jewelry.

Ishigaki story (Continued from Page 1)

Experience the culture

Ishigaki is not only famous for its deep blue sea but the salt that comes out of it. Enjoy a tour of the salt factory, located on rural Nagura Bay, and watch how salt is made. Then, visit the gift shop for savory souvenirs.

Learn about "minsa" textiles with a tour of a local crafts studio and discover why this vibrant cloth that has been a tradition in Ishigaki for many centuries.

The Ishigaki Pottery Studio is known for its lovely ceramic pieces, which are decorated with natural Okinawa ocean-colored glass and yutki tenmoku, a unique glazing technique where silvery white or golden brown crystals "crack" or "swirl" across a jet-black background.

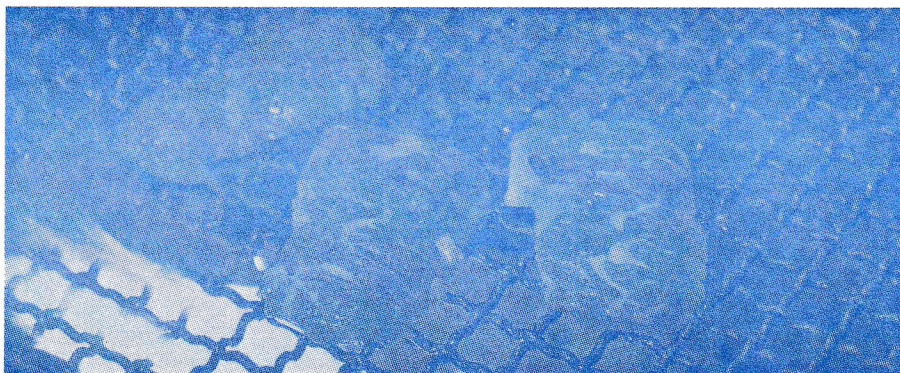
Get a glimpse into Ishigaki's past with a visit to the Municipal Yaeyama Museum. Admire the fascinating exhibits that feature over 5,000 artifacts and items that hold great cultural significance to the people who live in the most southern part of Japan.

Immerse yourself in total relaxation and freedom. From its breathtaking views to adventurous island tours, Ishigaki is the experience you'll never want to end.

Practical Information

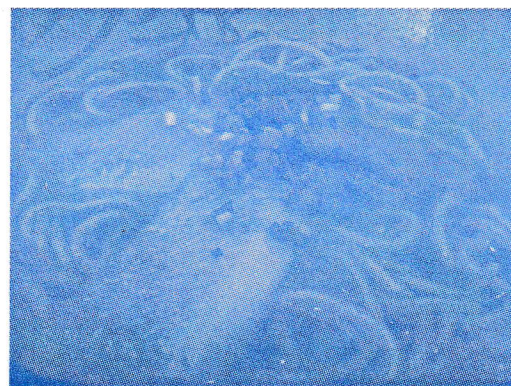
Shore Excursions	Passengers will meet at a specific location. Please refer to your tour ticket and/or Princess Patter for the place and time.
Transportation	Taxis are located at the ferry terminal and throughout the town center. Drivers speak Japanese and accept Japanese Yen.
Shopping	The nearest shopping area is Euglena Mall Shopping Street, 270-2 Okawa, Ishigaki City. You can shop for local specialties such as Brown Sugar, Sea Salt, Tropical Fruit, Traditional Textile Minsa and Chinsko salt cookies. Stores are generally open daily from 10:00am to 6:00pm.
Tipping	If you wish to include a tip, you may consider placing the gratuity inside a small envelope and hand it to the recipient.
Banks	The nearest bank is Japan Post Bank and is located at 12 Okawa, Ishigaki City. Generally open weekdays from 9:00am to 3:00pm, and closed on weekends and national holidays.
Post Office	The nearest post office is Yaeyama Post Office and is located at 12 Okawa, Ishigaki City. Generally open weekdays from 9:00am to 7:00pm, 9:00am to 3:00pm on Saturdays, and closed on Sundays and national holidays.
Emergency Numbers	Police – 110 Ambulance, Fire – 119
Tourist Information Office	Tourist information is available in the terminal. (Hirata Kanko / JNTO Visit Japan Tourist Information, Tel: 0980-82-6711)
Port Agent	Okinawa Ship's Agency Corp. 1583-288, Arakawa, Ishigaki City Okinawa Pref 907-0024 Tel: +81-980-84-1280 Fax: +81-980-84-1281
Terminal Location	Your Princess ship will anchor near Ishigaki Port.

Ishigaki Gourmet Guide



Ishigaki Gyu (Beef of Ishigaki)

Ishigaki beef is the pride of the island, and while being expensive, it is considered by many to be the most delicious in the world. It is meltingly smooth and a big splurge for meat lovers. Sampling strips served as yakiniku or even raw sashimi is more affordable.



Yaeyama Soba

Yaeyama soba is the popular local ramen-style dish which bears little resemblance to soba on the mainland. The Yaeyaman version consists of white wheat noodles in a mild pork-based stock, garnished with chunks of pork (sōki), some slices of fish cake and red ginger. This is the local's comfort food and the most popular dish amongst Japanese tourists.



Kamaboko (Fish Cake)

Is a rice ball that is wrapped in a type of fish cake. This is a popular snack and souvenir item for many visitors.