

PRINCESS PATTERN

Your daily guide to life at sea

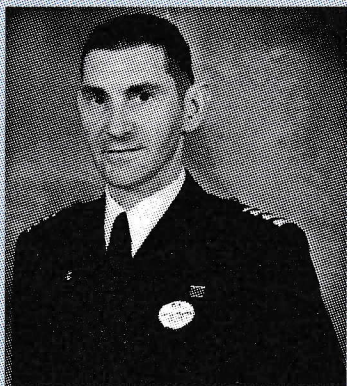
Okinawa, Japan Mon., May 22, 2017 • Sapphire Princess • Tonight's dress: smart casual

Weather: Today's Forecast: Partly Cloudy, chance of light rain - Temp: 24° C - 75° F - Sunrise 5:39am / Sunset 7:12pm

Tomorrow's Forecast: Cloudy - Temp: 23° C - 73° F

new discoveries in Okinawa

meet Paolo Ravera Captain



A native of the North West Coast of Italy, from the city of La Spezia, Captain Paolo Ravera graduated from the Nautical College Nazario Sauro and subsequently from the Italian Navy Academy.

His Sea Career starts in the early Eighties in the Italian Navy, serving on board a Specialized Survey and Research Vessel reaching the rank of Lieutenant. He then moved into the Italian Merchant Marine working on different types of Cargo Ships. In 1990 he served on his first Passenger Ship. Over the past years Captain Ravera has worked with Renaissance Cruises, Silversea Cruises and he joined Princess Cruises in 2003. He was promoted Staff Captain in 2004 and since then he served on all classes of Ships within the Company.

He lives with his family in Germany, in a small Countryside Village near the city of Nuremberg, Bayern.

Okinawa's known for sun-kissed beaches, endearing culture and breathtaking sights. Is it any wonder that it's one of Japan's most popular destinations? It's easy to see why when you embark on your own exploration. Shop till you drop at Okinawa's best shopping spots.

Explore grand palaces whose grandeur still enthrall. Watch traditional culture and crafts come alive at a charming recreation of an ancient

Okinawan village. Soak up the meditative beauty of sprawling gardens. Enjoy an evening out on the town complete with dinner and a performance. Okinawa's your ticket to memorable adventures.

here are some of the day's onboard highlights

Piazza Performance

Piazza Performance with 'Mr. Vaudeville'
Tibor Zabor and 'A Well Balanced Man' Oleg.
Deck 5 Midship at 9pm

Cruise Cult Classic: Romance on the Seas Gameshow

How well you know your partner?
Come and find out in this fun game show.
(PG-16). Sign-ups from 9pm.
Explorers Lounge, Deck 7 Midship at 9:15pm

Magical Showtime "Vertigo"

Starring: Jeremy Tan
An Unforgettable Magical Experience.
Princess Theatre, Decks 6 & 7 Forward
at 8:15pm & 9:45pm.

Okinawa immigration requirements

Upon arrival into Okinawa Japan, local Immigration authorities require every guest to undergo a mandatory inspection ashore in the Cruise Terminal. This inspection is expected to commence at approx. 1:30pm and will need to be completed by 3pm.

For the Inspection you will simply need:

- Your cruise card
- Your passport copy
- Japanese Customs Declaration Card

As you enter the terminal a Japanese Provisional Landing Permit (PLP) will be attached to the photocopy of your passport.

Please ensure to meet at the time and location that was communicated to you by your tour leader. You will then be escorted to the terminal as a group to complete the inspection.



Princess@Sea

Your FREE, mobile-friendly connection to ship events, information and account details. Login using any smartphone, tablet or computer.

- 1 Turn your device on airplane mode
- 2 Connect to the ship's WIFI (Sapphire-Princess)
- 3 Open on your web browser, & enjoy Princess@Sea!

9:30pm All Aboard! Sapphire Princess sails for Miyakojima, Japan shortly thereafter.

For assistance shoreside, please contact the Port Agent:
Okinawa Ship's Agency Corp. 2F Naha Port Terminal
2-1, Tondou-cho, Naha City, Okinawa
900-0035, Japan • Tel. No.: 81-98-866-7890

A new day, a new horizon.



refreshing morning

- 8:30am-11:30am **Morning Casual, Fun Portraits**
Make your memories last with lifestyle photography - casual and fun - great for the entire family. No sitting fees or obligation to purchase. Deck 7 Midship
- 9am-11am **Card Board Games and Mahjong Players get together**
Meet fellow guests for a game today. (Unhosted)
Vivaldi Dining Room, Deck 5 Midship
- 9am **Stretch class and Free Footprint Examination and Analysis**
Your footprint could hold the answer. Free foot examination and analysis with Fitness Instructor. Lotus Spa, Deck 15 Forward
- 9am-12pm **Free Private Photo Shoot** Have your photo taken in our Platinum Studio with Xingye our Master Photographer. Make your booking in the Photo/Video Gallery Deck 7 Aft
- 9:15am **IN THE PIAZZA** **'Dancesize Fun'** with Greg from the Cruise Director's Staff. Deck 5 Midship
- 9:30am **Seminar: Non Surgical Facelift Thermage 3rd generation**
With Dr. Luis Santiago. Lotus Spa, Deck 15 Forward
- 9:45am **Ring Toss with the Cruise Director's Staff.**
Club Fusion, Deck 7 Aft
- 9:45am **Morning Movie: Sing**
(PG - 1hr. 47mins) Neptune's reef & pool, Deck 14 & 15
- 10am **Complimentary Leica Camera Demonstration**
Celebrating a 100 years of photography, learn more about one of the most respectable brands in the photographic industry.
Photo Gallery, Deck 7 Aft
- 10am **Champagne Art Auction** Save up to 40% on world famous artists like Pablo Picasso and Peter Max. Free champagne, raffle prizes and work of art. Registration & preview from 10am, Auction to follow. Explorers Lounge, Deck 7 Midship
- 10am **IN THE PIAZZA** **Spa Showcase and Raffle** The Spa comes to you! Receive free sample massage and products and try our spa products. Deck 5 Midship
- 10am-11am **French Festival: 'Glockenspiel Class'**
Learn this music instrument for our French Festival day. (Limited event) Wheelhouse Bar, Deck 7 Forward
- 10am **Ping Pong Tournament.** Join fellow passengers for a game with the Cruise Director's Staff. Calypso Pool, Deck 14 Midship
- 10am **"Manager's 2 Power Hours Special."** Take advantage to shop with last 10% off, plus 10% more with manager special of selected jewelry. Only 2 hours. Deck 7, Effy Shop
- 10:30am **Ladies Pamper Party** Join our Spa team and pamper yourself for free for this hour. We will also be giving all who attend special offers and discounts. Lotus Spa, Deck 15 Forward

10:30am

IN THE PIAZZA

Runway at Sea Fashion Show Join us to get a sneak peek of our latest collection. Enter to win a \$50 Gift Certificate. Deck 5 Midship

10:45am

IN THE PIAZZA

EFFY Fine Jewelry Auction. Join Jackie for the special selected jewelry auction at sea! Start with \$1 bid! Exclusive low price only for the auction. Deck 5 Midship

10:45am

Grapevine Wine Tasting

Sample selected wines from our renowned cellar in a casual atmosphere for only \$9.50. Pacific Dining Room, Deck 6 Midship

11am & 9pm

Fitness seminar: Relieving back pain "Improving Posture"

Find out an effective method to improve your posture and get rid of your pains. Fitness Center, Deck 15 Forward

11am

Zumba@Sea With your ZIN qualified instructor from the Cruise Director's staff. Please wear appropriate footwear. Club Fusion, Deck 7 Aft

11am

French Festival: Arts & Crafts@Sea.

Learn this craft today as part of our French Festival. (Limited space available) Vivaldi Dining Room, Deck 5

11am

IN THE PIAZZA

Elevator Roulette Join us for this fun game of chance with the Cruise Director's Staff. Bet on which door will open. Outside Piazza. Deck 5 Midship

11am-2pm

Free Sampler Massage 2 mins

Lotus Spa, Deck 15 Forward

11:15am-12:15pm

French Festival: 'Ukulele Class'

Learn this Music Instrument for our French Festival Day. (Limited Event) Wheelhouse Bar, Deck 7 Forward

11:30am

IN THE PIAZZA

Piazza Performance with Duo Deluy. Deck 5 Midship

11:45am

Morning Movie: Moana

(PG - 1hr. 47mins) Neptune's reef & pool, Deck 14 & 15

11:45am

IN THE PIAZZA

Piazza Challenge With the Cruise Director's Staff. Deck 5 Midship

relaxing afternoon

12pm

French Festival: Tango Dance Class.

Enjoy and learn this popular dance with your onboard professional Dancers. Club Fusion, Deck 7 Aft

12:15pm

IN THE PIAZZA

Martini Demonstration. Join your Bar team and the Cruise Director's Staff as they create popular Martinis. Deck 5 Midship

1:15pm

Bean Bag Toss with the Cruise Director's Staff. Club Fusion, Deck 7 Aft

future cruise planning

Place a \$100 per person deposit to receive FREE shipboard credits for your next Princess voyage — even if you haven't decided where to cruise next.

Deck 6 Forward



Sabatini'sSM

Enjoy authentic Italian specialties, now featuring a new à la carte menu with delectable additions.

A \$29 cover charge applies.

Call 3463 for reservation.

Buon Appetito!

6pm-10pm • Deck 7 Aft

Purchase the All Inclusive Photo Package today

ONLY \$98.00! Take home all of your photos and digital files from this voyage for one great price.

Photo & Video Gallery • Deck 7 Aft

Internet Café

Need to check your email?

Stay in touch with family and friends, or check in on your favorite interests with 24-hour Internet access.

Promenade • Deck 7 Aft

Casino Vault & Cash Crane

Do you have nerves of steel and a steady hand?

If so, try to win our valuables secured in the casino vault and Cash Crane. Amazing new games with chances to win cash prizes.

Casino • Deck 6 Forward



Lotus Spa

Hot Stone Massage

A traditional full body massage combined with penetrating heat from stones bathed in essential oils.

75 mins • \$176

Lotus Spa, Deck 15 Forward



come back newSM

- 1:30pm Approx. **Sapphire Princess is scheduled to arrive in Okinawa, Japan**
- 1:30pm-3:30pm **Photographs with the Sapphire Princess Tigers & Pandas**
Be on the lookout for our photographers as you disembark the ship, to capture the special moments of your voyage!
- 1:45pm **Concert: Elton John**
(1hr. 4mins.) Neptune's reef & pool, Deck 14 & 15
- 2pm **Golf Putting Tournament with the Cruise Director's Staff.**
Princess Links, Deck 16 Midship
- 2:15pm **Arts and Crafts Class.** With the Cruise Director's Staff.
Sabatini's Dining Room, Deck 7 Aft
- 3pm **Afternoon Movie: Ant Man**
(PG-13 • 1hrs. 57mins) Chinese subtitles
Neptune's reef & pool, Deck 14 & 15
- 3:30pm **Afternoon Movie: Allied**
(Rated R • 2hrs. 4mins) Chinese subtitles
Starring: Brad Pitt & Vincent Ebrahim
Princess Theater, Decks 6 & 7 Forward
- 5:15pm **Afternoon Movie: Jurassic World**
(PG-13 • 2hrs. 4mins) Chinese subtitles
Neptune's reef & pool, Deck 14 & 15

enchanted evening

- 6:45pm **IN THE PIAZZA** **Live Music with the Sapphire Princess Showband.** Deck 5 Midship
- 7pm-9pm **Pre Recorded Ballroom and Latin Dance Date.**
Club Fusion, Deck 7 Aft
- 7pm-10:30pm **Casual Portraits Tonight** Make your memories last with lifestyle photography - casual and fun - great for the entire family.
Piazza, Deck 7 Midship
- 7:30pm **The Quest Gameshow.**
It's an adult's game of beg borrow or steal! With your Cruise Director's Staff. Explorer's Lounge, Deck 7 Midship
- 7:30pm **IN THE PIAZZA** **Piazza Performance with Duo Deluy.**
Deck 5 Midship
- 7:30pm **Evening Movie: Doctor Strange**
(PG-13) Starring: Rachel McAdams & Benedict Cumberbatch
Neptune's reef & pool, Deck 14 & 15
- 8pm **IN THE PIAZZA** **Live Music Continues with VOP Duo.**
Deck 5 Midship
- 8pm-11pm **Karaoke Power Night**
If you're good that's great. If you're bad it's even better. With the Cruise Director's Staff. Wheelhouse Bar, Deck 7 Forward

- 8:15pm **Early Evening Dance Favorites with Asiana Trio.**
Explorer's Lounge, Deck 7 Midship
- 8:15pm & 9:45pm **Magical Showtime "Vertigo"**
Princess Theater, Decks 6 & 7 Forward
- 9pm **IN THE PIAZZA** **Piazza Performance with 'Mr. Vaudeville' Tibor Zabor and 'A Well Balanced Man' Oleg.**
Deck 5 Midship
- 9pm-9:45pm **Ballroom and Latin Dance Class.** With your onboard professional Dancers. Club Fusion, Deck 7 Aft
- 9pm **Happy Hour Special.** Buy one get one for \$1. Fun for all with drinks snacks and music. Wheelhouse Bar, Deck 7 Forward
- 9:15pm **Cruise Cult Classic: Romance on the Seas Gameshow**
How well you know your partner? Come and find out in this fun game show. (PG-16). Sign-ups from 9:00pm.
Explorer's Lounge, Deck 7 Midship
- 9:30pm **All Aboard! Sapphire Princess sails for Miyakojima, Japan shortly thereafter**
- 9:45pm **IN THE PIAZZA** **70's Line Dance Class** With the Cruise Director's Staff. Deck 5 Midship
- 9:45pm **Evening Movie: Fantastic Beasts and Where to Find Them (2017)**
(PG-13 • 2hr. 12mins) Chinese subtitles
Neptune's reef & pool, Deck 14 & 15
- 9:45pm-10:45pm **Pre-Recorded Ballroom & Latin Dance Date.**
Club Fusion, Deck 7 Aft
- 10pm **IN THE PIAZZA** **Cruise Cult Classic: 70's Night** Join the Cruise Staff and Party Band 'Ocean Boulevard' to dance to your favorite 70's hits the Hustle Saturday Night Fever and more! Deck 5 Midship
- 10pm **Party All Night Long with DJ Farrah.**
(18 years and over) Skywalkers Night Club, Deck 18 Aft
- 10:15pm **More Music and Dancing with Asiana Trio.**
Explorer's Lounge, Deck 7 Midship
- 10:15pm **Birthstone Celebration Event.** Come and discover your lucky birthstone get additional 10% off and raffle to win free gifts.
Deck 7, Effy Shop
- 10:45pm **Stargazing with Discovery at Sea.** Join your Cruise Director's Staff for an informal discussion of the night sky. Please note the viewing deck will be darkened. Club Fusion, Deck 7 Aft
- 11pm-midnight **IN THE PIAZZA** **Vocal Entertainers Johnny Wu and Nico Lu.**
Deck 5 Midship
- 11:15pm-12:15am **Music Video Hour.**
Club Fusion, Deck 7 Aft

PRINCESS CRUISES PRESENTS

Magical Showtime "Vertigo"

Starring: Jeremy Tan

An Unforgettable Magical Experience.

8:15pm & 9:45pm

Princess Theater, Decks 6 & 7 Forward

In the Piazza

Piazza Performance with
'Mr. Vaudeville' Tibor Zabor
and 'A Well Balanced Man' Oleg.

9:00pm
Piazza, Deck 5 Midship

Juice and Bubble Tea Bar

Try our fresh juices, fruity
smoothies and flavorful
bubble teas

Lobby Bar/Bar Piazza, Deck 5

PRINCESS CRUISES PRESENTS

Cruise Cult Classic: Romance on the Seas Gameshow

How well you know your partner?
Come and find out in this fun game show.
(PG-16). Sign-ups from 9pm.

9:15pm

Explorer's Lounge, Deck 7 Midship

LOCATIONS, HOURS & MORE



Art Gallery – Deck 5 Midship (Open for viewing 24 hours)
5:30pm-11pm

Onboard Duty Free Boutiques – Decks 6 & 7 Midship
9am-Arrival & Sailing-11:30pm

Casino – Deck 6 Forward
Casino opens approximately 2 hours after sailing

Captain's Circle Membership Desk/Future Cruise Sales Deck 6 Forward
9am-12pm

Internet Café (24 hours) – Promenade, Deck 7 Aft
Manager Hours: 9am-12pm

Library – Deck 6 Forward
9am-10am - Book check out available

Lotus Spa, Salon & Fitness Center – Deck 15 Forward
Spa: 9am-11pm, Fitness Center: 8am-11pm

Medical Center – Deck 4 Midship

8am-10am & 4:30pm-6:30pm
For urgent medical attention, dial 911
Medical charges do apply for ALL services and medication

Photography & Video Gallery – Deck 7 Aft

8am-Arrival & 7pm-11pm
Platinum Studio, Deck 16 Forward
Bookings available from the Gallery, Deck 7 Aft

Youth & Teen Centers – Deck 15 Aft

9am-9:45am - Late registration
10am-12pm - Morning activities
1pm-6pm - Port day programming
7pm-10pm - Evening activities
Teen late night activities available upon request

Dining Guide For details and reservations, dial 3463 between 8am and 5pm.

Venue	Location	Hours
Savoy Dining Room	Deck 5 Midship	Dinner: 5:30pm-9:30pm (Anytime Dining)
Vivaldi Dining Room	Deck 5 Midship	Dinner: 5:30pm-9:30pm (Anytime Dining)
Santa Fe Dining Room	Deck 6 Midship	Lunch 11:30am-1pm; Dinner: 6pm-9:30pm (Anytime Dining)
Pacific Moon Dining Room	Deck 6 Midship	Dinner: 6pm-10pm (Anytime Dining)
International Dining Room	Deck 6 Aft	Breakfast: 7am-9am; Lunch: 11:30am-1pm; Dinner: 6pm-10pm (Anytime Dining)
Alfredo's Pizzeria	Deck 5 Midship	11am-1:30pm & 6pm-10pm
Sabatini's* (authentic Italian cuisine)	Deck 7 Aft	6pm-10pm
Lobster Grill*	Deck 14 Midship	11am-1:30pm & 6pm-9pm
Prego Pizzeria	Deck 14 Forward	11am-1:30pm & 6pm-9pm
Swirls Ice Cream Bar	Deck 14 Midship	11am-1:30pm & 6pm-9pm
Horizon Court Buffet	Deck 14 Aft	Continental Breakfast: 5am-6am; Breakfast: 6am-11:30am; Lunch: 11:30am-3pm; Light Snack: 3pm-5:30pm; Dinner: 5:30pm-11pm

bars, clubs & lounges – Signature Recommendation: Tokyo Iced Tea

Venue	Location	Hours
International Cafe	Deck 5 Midship	Open 24 Hours
Churchill's Bar	Deck 6 Forward	11am-1pm & 5:30pm onwards
Wheelhouse Lounge	Deck 7 Forward	11am-1pm & 5:30pm onwards
Crooners Lounge	Deck 7 Midship	11am-2pm & 5:30pm onwards
Calypso Bar	Deck 14 Midship	5am onwards
Skywalkers Night Club	Deck 18 Aft	9pm onwards

*Additional charges apply. The legal drinking age of 18 years is observed onboard and photo ID may be required.
A 15% service charge is automatically added to all bar and wine bills.

security screening

All guests returning to the ship must pass through security screening. Objects containing metal such as mobile phones, cameras, binoculars, reading glass cases, large belt buckles, batteries, electrical devices, etc. will cause the walk through metal detector to alarm and delay entry onto the ship. Such items need to be placed into the trays provided before you pass through the metal detector. Guests with, for example, surgical metal implants, large amounts of metal jewelry, metal shoe stays, etc. may need to undergo further screening, e.g. hand-held metal detector or "Pat Search."

Japanese quarantine

Japanese Quarantine regulations advises all guests that it is forbidden to take ashore any fruits, plants, seeds, flowers, dairy products or meats. If guests are found with any of these forbidden items, fines may be enforced.

想獲得公主遊輪優惠訊息及相關新聞
歡迎關注官方臉書、訂閱公主快訊

官方臉書 / 公主快訊



f 公主遊輪台灣

訂閱電子報

shore excursions: Tour office hours: 8:00am to 10:00am & 6:00pm to 8:00pm Deck 6 Forward

Meeting Time and Locations	Group		
Princess Theater Deck 7 Forward	13:20	1,2,3,4,5,6	Shurijo Castle & Kokusai Street (Guided In Chinese)
Explorers Lounge Deck 7 Midship	13:35	7,8,9,10,11	Shurijo Castle & Kokusai Street (Guided In Chinese)
Princess Theater Deck 7 Forward	13:40	12,13,14,15	Okinawa Shopping Tour (Escorted In Chinese)
Explorers Lounge Deck 7 Midship	13:55	16,17,18,19	Okinawa Shopping Tour (Escorted In Chinese)
Princess Theater Deck 7 Forward	14:00	20,21,22,23,24	Seifa Utaki & Gangala Valley Hike (Guided In English)
Explorers Lounge Deck 7 Midship	14:15	25,26,27,28,29	Seifa Utaki & Gangala Valley Hike (Chinese)
Princess Theater Deck 7 Forward	14:20	30,31,32,33,34	Seifa Utaki & Gangala Valley Hike (Chinese)
Explorers Lounge Deck 7 Midship	14:35	35,36,37,38	Shurijo Castle & Kokusai Street (Guided In English)
			13:00 Vivaldi Dining
			13:00 Vivaldi Dining
			13:00 Vivaldi Dining
			13:00 Vivaldi Dining
			13:15 Vivaldi Dining
			13:15 Vivaldi Dining
			13:15 Vivaldi Dining
			13:15 Vivaldi Dining