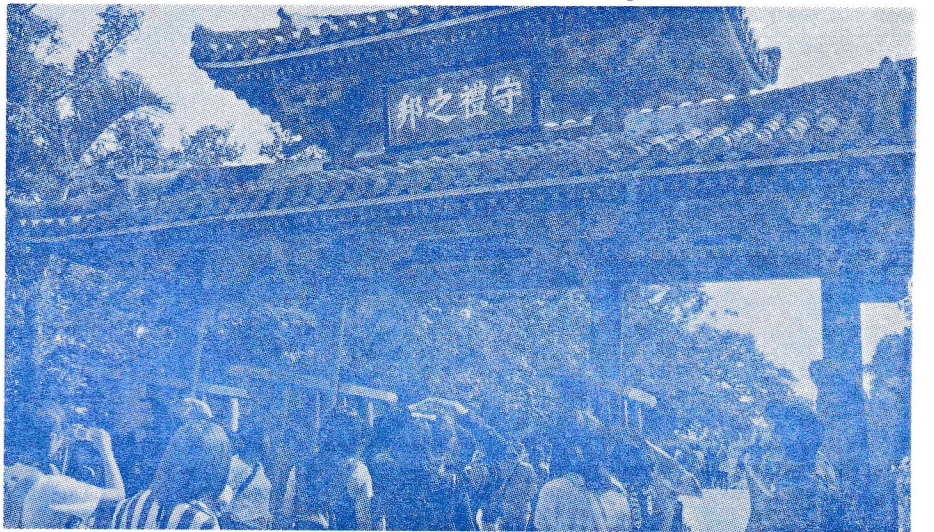


Okinawa (Naha) Port Guide



Okinawa, Japan

Founded

The main island of Okinawa lived an independent existence until it became a Japanese prefecture in 1879.

Region

Surrounded by the East China Sea, Okinawa is the largest island in the Ryukyu Islands, located 400 miles south from the rest of Japan.

Population

1.385 million (2009)

Climate

Sometimes referred to as the "Hawaii of Japan," Okinawa's subtropical weather means mild winters and hot summers with pleasant year 'round temperatures averaging 68°F.

Language

Japanese

Some useful words

HelloKonnichi wa
 Yes.....Hai
 NoIie (ee-YUH)
 Please.....Dozo
 Thank youArigato gozaimasu
 Excuse meSumi masen
(Soo-me MAW-sen)
 Good morning...Ohayou Gozaimasu
 Good afternoon..Konnichi wa

"Please take me back to the port" (in local language)

"Naha-ko Wakasa Ba-a-su ni
 tsurete itte kudasai"

Currency

Japanese Yen (JPY)

A city of contrasts

You can't help but admire the dual personality of Okinawa as you make your way around the main island. From its landmark 14th century Ryukyu-era Shurijo Castle to the 20th century memorials dedicated to peace Okinawa strives to build a bustling future while embracing its revered past. It's this fascinating mix of reverence and energy that makes Okinawa such an unforgettable experience.

A living history

Okinawa's early history has been lost to time until the 15th century when the Ryukyu kingdom, then under the power of China, ruled over the islands. Okinawa then flourished as a great trading center with China, Korea and Southeast Asia. Reminders of the Ryukyu's exalted past is carefully being restored in Naha City, the seat of power during the Ryukyu's 500-year-reign.

For a glimpse into the original splendor that surrounded the Ryukyu kings, take a step back in

time with a tour of the magnificent Shurijo Castle. Outside, the picturesque Shureimon Gate shimmers in red and gold lacquer. Inside, the main hall is decorated in a lavish décor and a striking red color that is unique to Shuri Castle. Originally built in the late 1300s, Shuri was destroyed and rebuilt numerous times over the centuries and was ultimately destroyed in the battle of Okinawa in 1945. Reconstructed on the original location using photos, official records and memory, it reopened in 1992 and is a UNESCO World Heritage site.

The peaceful and delightful 18th century Shikinaen Garden was also built for royalty. Here, you'll find simple wooden buildings and pavilions with tile roofs artfully situated among traditionally landscaped grounds, connected by manicured paths that meander over graceful stone bridges, through small forests and around a central pond.

Experience what ordinary Ryukyu

Points of Interest

- 1** Shurijo Castle
- 2** Okinawa Museum
- 3** Japanese Navy
- Underground Headquarters**
- 4** Peace Memorial Park
- 5** Shikinaen Gardens
- 6** Ryukyu Mura
- 7** Seifa Utaki
- 8** Churaumi Aquarium



Map not to scale



To 6 8

Naminoue Rinko Rd

East China Sea

58

29

35

43

47

42

222

58

3 4

5 7

5

1

1 2

To Ryutan Pond & Shureimon Gate

Tembusu-Naha

To Tsuboya Museum

Makishi Market

Kokusai Odori

Kokusai Street

Ichigin Dorri

Okiet Odori

Nakayoshi Dorri

Sogonji Dorri

Wakasa Odori

Wakamatsu Oroshidon-Ya-gal Dorri

To Naha Airport, Awamori Brewery, Himeyuri Museum, Rukyu Glass Village and Peace Memorial Park and Museum

Kume Odori

Uenkua Odori

Nishi-Shobosho Dorri

Okinawa Gas Dorri

Naminoue Rinko Rd

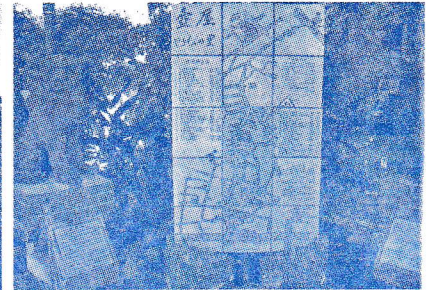
Wakasa Kaijien Dorri

Naminoue Beach

Naminoue Shrine

58





① Shurijo Castle 首里城

Built in the 1300s, this vermilion-colored landmark was the palace of Ryukyu kings and is a designated UNESCO World Heritage Site. Explore the castle's interior, now a museum, and take in panoramic views.

② Okinawa Museum 沖縄県立博物館

Dedicated to preserving Okinawan art and history, this modern museum showcases 85,000 artifacts pertaining to folklore, crafts and archaeology in its collection ranging from the 12th century to the present.

③ Japanese Navy Underground Headquarters 旧海軍司令部壕

Descend 101 steps into a complex dug by hand that served as the Japanese Navy's headquarters during World War

II. A recorded audio feed enhances your tour through the underground tunnels.

④ Peace Memorial Park 平和祈念公園

Peace Park and Okinawa Peace Memorial Museum serve as the main memorial to the Battle of Okinawa. Stroll the grounds and learn about the events leading up to this devastating period in Okinawan history.

⑤ Shikinaen Gardens 識名園

Constructed in the 18th century as a second home to the Ryukyu kings, the property's landscaped gardens, quaint wooden palace buildings and a tranquil pond can all be viewed by strolling a picturesque circular path.

⑥ Ryukyu Mura 琉球村

Traditional culture comes to life in this charming re-creation of an ancient

Okinawan village. "Living exhibits" showcase festivals, cuisine and crafts. A parade and dance performances add merriment.

⑦ Seifa Utaki 斎場御嶽

Okinawa's most important, outdoor sacred place at the UNESCO World Heritage Site. Discover ceremonial altars created from natural stone and caves nestled within a rocky seascape.

⑧ Churaumi Aquarium 美ら海水族館

A kaleidoscope of marine life is on display in over 80 tanks, including the massive Kuroshio Tank, holding 2 million gallons of seawater. See sharks, mantas, colorful coral, and a dolphin show.

Okinawa story (continued from page 1)

lives were like with a journey to Ryukyu Mura, a charming reproduction of an ancient Okinawan village. Original architecture from all over the region is on display, and Okinawan cuisine is featured in food stands and restaurants. Visit "living exhibits" showcasing traditional festivals, cuisine and crafts and watch villagers create traditional bingata stencil-dyed fabrics. You can even

try your hand at activities like indigo dying, pottery, painting and playing the sanshin guitar.

Landmarks

Military history enthusiasts will appreciate a look at the Battle of Okinawa with a tour of several sites commemorating the event. The former Japanese Navy Underground Headquarters is noted as the last

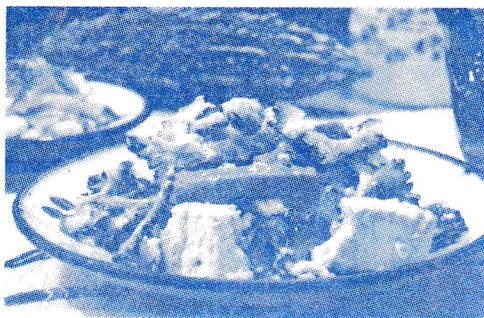
stand of the Japanese Navy. The Himeyuri Peace Museum and the adjacent Himeyuri Monument commemorates the lives of female high school students who worked as nurse assistants in army field hospitals. And nearby, you'll find the lovely Peace Park and Okinawa Peace Memorial Museum.

Practical Information

Shore Excursions	Passengers will meet at a specific location. Please refer to your tour ticket and/or Princess Patter for the place and time.
Transportation	Taxis are available at the pier and throughout Naha City. Taxi drivers may have limited English-speaking abilities and usually will only accept local currency for fares. There are no trains in Okinawa and Naha can be very crowded with cars especially at rush hour.
Shopping	Okinawa is well known for its beautiful and delicate traditional arts and crafts that include weaving, dyeing, lacquerware, fabrics and ceramics. Kokusai Dori (International Street) is the main retail street in Naha, located five miles from the pier. Kokusai Dori is roughly a 1.5-mile strip bustling with souvenir stores, bars, cafes, clothing stores, hotels and restaurants. Midway along Kokusai Dori at the intersection of Okiei and Ichiba Chuo Streets are the covered market alleyways (shotengai) of the Makishi public market, including Heiwa Dori and Mutsumi Dori. Close to here is the Tsuboya Pottery Museum with displays of historical Okinawan ceramics. Stores are generally open from 9:00am to 8:00pm, seven days a week.
Tipping	If you wish to include a tip, you may consider placing the gratuity inside a small envelope and hand it to the recipient.
Banks	The nearest bank is located at Kencho-mae (Okinawa Pref.). Generally open weekdays from 8:30am to 3:30pm, and closed on weekends and national holidays.
Post Office	The nearest post office is located at Kencho-mae (Okinawa Pref.). Generally open weekdays from 9:00am to 5:00pm, and closed on weekends and national holidays.
Emergency Numbers	Police – 110 Ambulance, Fire – 119
Tourist Information Office	Tembusu Naha 1F 3-2-10 Makishi, Naha City, Okinawa 900- 0013
Port Agent	Okinawa Ship's Agency Corp 2F Naha Port Terminal 2-1, Tondou-cho Naha City, Okinawa Tel: +81-98-866-7890 Fax: +81-98-866-7096
Terminal Location	Your Princess ship will dock at Naha Tomari Port Number 8, which is in walking distance to town.

Okinawa Gourmet Guide

Okinawan cuisine differs from Japanese cuisine due to the islands' unique history. Kokusai Dori (International Street) is a good place to try Okinawan food. Local dishes include:



Goya Chanpuru

Champuru means "stir fry" and the most popular is goya champuru, in which the bitter goya vegetable is stir fried with tofu, eggs and pork or spam.



Taco Rice

As a result of the American presence in Okinawa, taco rice appeared in Okinawa sometime after the end of the war. It consists of typical taco ingredients, such as ground beef, lettuce, tomatoes and salsa, served over rice.



Yanbaru Shimabuta Agu

This is an Okinawa breed of pork and is considered a delicacy.