



# STAR NAVIGATOR

## SNAP UP OUR STAR OFFERS!

### FLAT 50% Off On Selected Salon & Spa Services

Promo from  
12:00nn to 5:00pm

Please visit Oscar's Salon and  
King Neptune Health Club on  
Deck 12 Fwd.

### Entertainment Couple Package

For only SGD 250 you get all of these:

- 2 DREAM GIRLS - A Topless Show (Premium) Tickets
- 3 Tickets for Bingo Game
- 3 Tickets for Jackpot Lottery Game
- 1 Cruise DVD
- Galley Tour for 2

Available at the  
Activity Centre, Deck 10 Fwd.  
*\*Terms and Conditions Apply\**

### SUPERSTAR GEMINI

**Singapore**

10 September 2017, Sunday

#### Departure

3:00pm

#### Sunset:

7:05pm



#### Captain

Jörgen Holmberg (Sweden)

#### Staff Captain

Karl - Gustav Ek (Sweden)

#### Chief Engineer

Petter Ivarsson (Sweden)

#### Hotel Manager

Dodie Rosacay (Philippines)

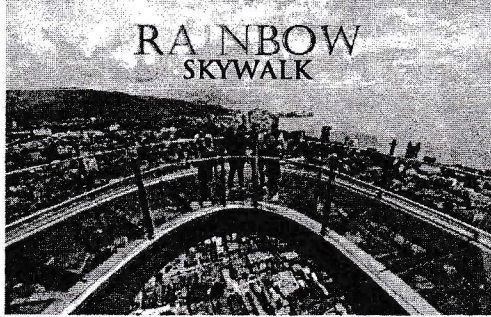
#### Cruise Director

Mathew Joseph (India)

#### Executive Chef

Christopher Bartolome (Malaysia)

### Highly Recommended Penang Tour



RAINBOW  
SKYWALK

Book your Tours Now at the  
Shorex Counter, Deck 7 Mid.  
11:00am - 9:00pm

### TODAY'S SPECIAL

# Up to 40% Off

Don't Miss out TODAY'S Hot Deal!

Please proceed to  
Hot Spot Duty Free, Deck 9 Mid  
and discover the daily discount!

### SHIP FACTS

Gross Tonnage (grt)	50,764
Length	230m / 754.59ft
Width	29m / 95.14ft
Average Cruising Speed (knots)	18kn
Maximum Cruising Speed (knots)	20kn
Number of Cabins	765
Passenger Capacity (based on lower berths)	1,530

### Singapore

An island city-state off southern Malaysia, is a global financial centre with a tropical climate and multicultural population. In circa-1820 Chinatown stands the red-and-gold Buddha's Tooth Relic Temple, Little India offers colourful souvenirs and Arab Street is lined with fabric shops. Singapore is also known for eclectic street fare, served in hawker centres such as Tiong Bahru and Maxwell Road.

## STAR NAVIGATOR shows you the way

#### TODAY'S THE DAY!

Sail with us on a  
journey of discovery  
- into a world of  
activities galore

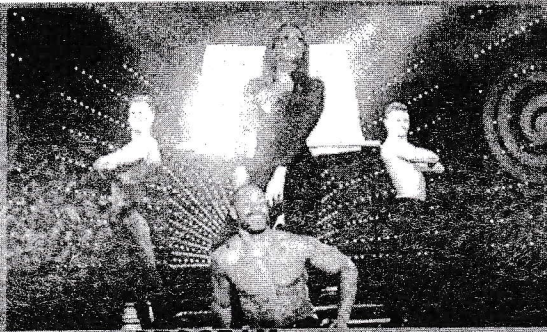
#### FOR YOUR DINING PLEASURE

**Sweet, Savoury and Scrumptious**  
take your taste buds on a trip  
around the world with our  
guide to global dining

#### IMPORTANT NOTICE

**Stay Safe!** We're committed to the safety and comfort of  
all passengers and strongly recommend the reading of  
important notices concerning our destinations,  
customs, late check-outs, WiFi onboard, our cashless  
system and of course safety drills... and more

# TODAY'S THE DAY!



TIME	PROGRAM	VENUE	DECK
<b>ACTIVITIES ARE SUBJECT TO CHANGE WITHOUT PRIOR NOTICE</b>			
<b>MORNING</b>			
11:00am - 9:00pm	Book your Tour for Penang and Langkawi now at the.....	Shorex Counter	7 Mid
11:30am - 12:00mn	The Copy Cat (Lip Sync Competition) Registration	Activity Centre	10 Fwd
11:30am - 12:00mn	"DREAMGIRLS" in Paradise Hotel Adult Show Tickets are available at the...	Activity Centre	10 Fwd
11:30am - 12:00mn	*Register now for Galley Tour with Sushi Making, Captain's Bridge Magic Class with Sophie, Gemini Dance Package (Fitness Class, Bachata and Belly Dance Class) (Maximum of 30 guests)	Activity Centre	10 Fwd
11:30am - 12:00mn	Superstar Gemini Ship Tour Registration (Maximum of 30 registrants)	Activity Centre	10 Fwd
12:00nn - 1:30pm	Welcome Drinks served at the...	Stardust Lounge	10 Fwd
<b>AFTERNOON</b>			
2:00pm - 12:00mn	Register now for Cake Pops and Chocolate Workshop, Pizza Making, Cake Decoration, Ice Cream Party, Kids Pyjama Party and Animal Toy Ride	Child Care Centre	11 Aft
<b>2:15pm</b>	<b>Mandatory Passenger Safety Drill</b> All passengers must proceed to their respective muster station, as indicated on cabin key card and safety signage in the cabin.	<b>Muster Station</b>	<b>Deck 7</b>
2:30pm	The SuperStar Gemini Parade	Reception Lobby	7 Mid
<b>2:45pm</b>	<b>Sail Away Party with Class of Six Band and Cruise Staff</b> <b>Promo Mega Sales &amp; Discounts are available at the...</b>	<b>Stardust Lounge</b>	<b>10 Fwd</b>
3:00pm - 4:00pm	Skin Care Consultation by our Beauty Therapist	Oscar Salon	12 Mid
3:30pm - 4:00pm	Kids Welcome Aboard Party	Oceana	12 Fwd
3:30pm & 4:00pm	Superstar Gemini Ship Tour with your Cruise Staff (For registered guests only)	Activity Centre	10 Fwd
4:30pm - 5:00pm	Open House for Child Care Centre	Child Care Centre	11 Aft
5:00pm - 11:00pm	Lottery and Lucky Star tickets are available at....	Activity Centre	10 Fwd
<b>EVENING</b>			
5:00pm - 6:00pm	Open House for Viewing of our Executive Suite Cabin (Assemble at Reception Counter Deck 7 Mid)	Reception	7 Mid
7:30pm - 8:15pm	Kids at Work Party	Child Care Centre	11 Aft
<b>8:30pm - 9:15pm</b>	<b>Magic Show: MYSTERY - The French Lady of Magic: Sophie Edelstein</b>	<b>Stardust Lounge</b>	<b>10 Fwd</b>
<b>9:15pm - 10:00pm</b>	<b>SuperStar Gemini Jackpot Bingo SGD26,888</b> <b>(Pre-selling starts at 8:15pm)</b>	<b>Stardust Lounge</b>	<b>10 Fwd</b>
9:30pm - 10:15pm	*Junior Camper	Basketball Court	13 Fwd
<b>10:30pm - 12:00mn</b>	<b>Bollywood Disco with DJ Anil (Minimal Charges Apply)</b>	<b>Stardust Lounge</b>	<b>10 Fwd</b>
10:45pm	SuperStar Gemini SGD8,888 Jackpot Lottery Draw	IR Lounge	10 Mid
12:30am - 2:15am	Movie Time: For A Few Bullets (English Movie with Chinese Subtitle)	Stardust Lounge	10 Fwd

All activities with asterisk symbol (\*) are pre - registration required with minimal charges apply.

## MUSICAL ENTERTAINMENT - MUSICIANS FROM THE PHILIPPINES



### Sound Clippers Band Oceana, 12 Mid

Swing with 70's Music

8:00pm - 8:45pm

9:00pm - 9:45pm



### Brown Republic Trio

IR Lounge, 10 Mid

Current Top Hits

7:45pm - 8:30pm

Movie Theme Song

8:45pm - 9:30pm



### Class of Six Band

Oceana, 12 Mid

The Best of Love Songs

10:15pm - 11:00pm

11:15pm - 12:00mn



### Pianist Raz

IR Lounge, 10 Mid

Rod Stewart Greatest Hits

10:00pm - 10:45pm

Modern Pop Song

11:00pm - 11:45pm

12:00mn - 12:45am

# FOR YOUR DINING PLEASURE

## Inclusive Restaurants

**Dynasty Deck 11 Aft**  
**Chinese Buffet**  
 Lunch: 11:30am - 1:30pm  
 Afternoon Tea: 3:00pm - 4:00pm  
 Dinner: 6:00pm - 8:30pm

**Mariners Deck 9 Mid**  
**International & Indian Cuisine**  
**(Pork & Lard Free)**  
 Lunch: 12:30pm - 3:30pm  
*International and Indian Cuisine*  
 Dinner: 6:00pm - 9:30pm  
 Supper: 11:30pm - 1:00am  
*International & Indian Cuisine with Congee*  
*Pork and Lard Free*

**Bella Vista Deck 9 Aft**  
**Western Semi Buffet**  
**Serving Indian Cuisine Family Style**  
 Lunch: 12:00nn - 2:30pm  
 Dinner: 6:00pm - 9:00pm

### Important Notice:

All Restaurants and Outlets will be closed during Passenger Safety Drill at 1:30pm and will resume at approximately 2:30pm.

## Ala Carte Restaurants

**Blue Lagoon Deck 11 Mid**  
**Cabin Service - Please call: 11811**  
 All Day Dining / 24 Hours Open

**Taipan Deck 11 Aft**  
**Chinese A La Carte & Steamboat**  
**Extension No. 11911**  
 Lunch: 11:30am - 2:00pm  
 Dinner: 6:00pm - 9:00pm

### Important Notice:

Allocation of tables is on "First Come, First Served" basis and seating will be given to the exact number of dining guests only. Please be seated after receiving a table number from the Hostess.

Please note that you maybe requested to share table during Restaurant peak hours to accommodate other guests.

A second meal in another Inclusive Restaurant during the same meal period is chargeable.



## Gala Dinner Reservations

Guests are required to make table reservations for Tuesday night's Gala Dinner at the Bella Vista. Gala Dinner Reservation can be made during Restaurant's operation hours. Please bring along your access card. Reservations for all guests are strictly on a "First Come, First Served Basis" and depends on seating availability in the Restaurants.

**Gala Dinner Tuesday:**  
**Bella Vista Restaurant:**  
 1st Seating 6:30pm &  
 2nd Seating 9:00pm  
**Mariners Restaurant:**  
 Gala Seating 9:00pm

**Gala Dinner Dress Code:**  
 Elegant or smart casual wear is highly recommended. Shorts, bermudas, slippers, flip-flops, sports wear bathrobes and swimwear are not allowed.

# OUTLETS & FACILITIES Relax to the MAX!

FOOD AND BEVERAGE OUTLET	NUMBER	DECK	OPERATIONAL HOURS
Observatory Lounge / KTV	12504	12 Fwd	6:00pm - 3:00am
Champ's Bar	12603	12 Mid	11:30am - 2:00am
Topsider	11820	11 Mid	11:30am - 2:00am
IR Lounge	10720	10 Mid	11:30am - 3:00am
Rendezvous Bar	9704	9 Mid	11:30am - 2:00am

## GENERAL INFORMATION

OUTLET	NUMBER	DECK	OPERATIONAL HOURS
Medical Centre	22	6 Fwd	3:00pm - 4:00pm / 7:00pm - 9:00pm
Aside from above schedule, please call 00 for any medical assistance			
Reception	00	7 Mid	Open 24 Hours
Emergency	21		Open 24 Hours
Oscar's Salon	12505 (For Reservation)	12 Fwd	11:00am - 12:00mn
Gymnasium		12 Fwd	11:00am - 12:00mn
King Neptune Health Club	12515 (For Reservation)	12 Fwd	11:00am - 12:00mn
Mahjong Room		12 Fwd	11:30am - 12:00mn
Topsider Pool		11 Mid	8:00am - 10:00pm
Hot Spot Watches & Jewellery Shop		11 Aft	6:00pm - 12:00mn
Hot Spot Toscow Jewellery Shop		11 Aft	11:30am - 12:00mn
Star Boutique		11 Aft	11:30am - 1:00am
Child Care Centre		11 Aft	1:00pm - 12:00mn
Activity Centre		10 Fwd	11:30am - 12:00mn
Hot Spot Duty Free Shop		9 Mid	11:30am - 1:00am
Port O'Call		9 Aft	11:30am - 1:00am
Photo Gallery		9 Mid	6:00pm - 11:00pm
Swimming Pool		9 Aft	8:00am - 10:00pm
Shorex Counter		7 Mid	11:00am - 9:00pm

# IMPORTANT NOTICE Please take a moment... to read this

## IMPORTANT NOTICE FROM SINGAPORE CUSTOMS

There is no GST / Duty Free concession on  
**Liquors, Cigarettes and other Tobacco Products.**

## CABIN UPGRADE

Upgrade your cabin to our Balcony or Suite and get a Dining Credit of SGD50 per cabin per night. Cabin Upgrades are subject to cabin availability. Please contact Reception on Deck 7 Midship or dial extension "00" for more details.

*"This is not applicable for Suite Promotion and bookings made under Memberships"*

## WI-FI FACILITY ON BOARD

Wi-Fi facility is available onboard.

How to Log-in:

Step 1: Connect to "SSGemini" WIFI.

Step 2: Open your internet browser (i.e. Chrome, Safari) then, key-in website "ssg.com".

Step 3: Enter 4 digit cabin number and birthday. Then, click "Log-in"

Step 4: Buy internet by choosing on the plan package which will be automatically charged to your own account.

*\*For guest holding vouchers, please choose voucher and key in the voucher number.*

Step 5: Click "Buy" to confirm your plan purchase.

*\*To Re-login, enter your 4-digit cabin number and your birthday then click Let's Go!*

## WMS INTERNATIONAL ROAMING SERVICE NOTICE

### **"Cellular at Sea" GSM roaming and 3G service onboard**

The international roaming services of your phone including Voice and Data may automatically connected during cruising.

All charges are determined by your mobile service provider and will be billed to you on your regular phone account.

If you do not wish to use this service, switch your device in airplane mode and enable Wi-Fi or switch off your mobile phone while at sea.

## SAFETY POLICY

- Smoking is one of the most common causes of fire at sea. Smoking in bed and throwing of cigarette butts overboard is strictly prohibited.
- Burning incense, lucky paper and similar items in your cabin is extremely dangerous and strictly prohibited.
- Use of any heating devices such as flat iron, water heater, etc. is strictly prohibited.
- Do not sit or lean over the barriers, hand rails or railings.

## IMPORTANT NOTICE

Please be informed that bringing of any alcoholic beverages (Bottles/ Cans of Spirits / Wines / Beers) on-board is prohibited as stipulated in your booking confirmation slip. It is permissible to bring alcoholic beverages into Singapore as long as it is declared at the Customs Office prior to the luggage x-ray and exiting of the terminal.

Tax will be imposed depending on quantity and alcoholic content.

## LOST AND FOUND KIDS

For your children's safety, any lost / unattended child found in public areas will be automatically taken to Reception. If Parents are unable to be located, your child will be taken to the Child Care Centre and registered as "Lost". After a grace period of 30 minutes (and if the Parents still fail to appear) we will begin charging the Parents cabin at the normal Child Care Centre rates.

## EXPRESS CHECK OUT

To avoid long queues and inconvenience during account settlement, complete the Express Check-out Form available at the Reception Counter located on Deck 7, Midship. Please bring along your Credit Card and completed form to Reception. Express Check-Out Form will not be accepted on the last day of the cruise.

## PHYSICALLY CHALLENGED

Guests who are physically challenged and in need of assistance, please register at the Reception Counter located on Deck 7 Midship.

## IMPORTANT NOTICE

For the safety of the ship, guests and crew as well as concerns for privacy, operation or use of any Remotely controlled or autonomously flying devices, toys or drones onboard or in the vicinity of the ship is strictly prohibited.