

2018年3月23日(金)

日の出：7:07am
日の入り：7:14pm



日本語デイリープログラム クイーン・メリー2

World Voyage
M2 2018

2018年ワールドボヤージ シンガポールへようこそ!

今夜のドレスコード (6pm以降)

インフォーマル
男性はジャケット着用、
ネクタイはオプション。
女性はカクテルドレス、
スタイリッシュな装い。



両替

現地通貨：シンガポール・ドル (SGD)
パーサーズ・オフィスにて
(デッキ2、B階段) 両替ができます。
SGD10、SGD50 札のみ取り扱い

シンガポール出発後、不要シンガポール・ドルを
船内にて他通貨等に再両替なされる場合、船内でお
取り扱いのある紙幣のみとなり、
硬貨は両替できませんのでご注意ください。

日本人ホステスからのご挨拶



クイーンメリー2日本人ホステスの
山本悦代(やまもとえつよ)です。
この度はご乗船いただき誠にありが
とうございます。ご質問などがある方は
パーサーズオフィス☎22200まで
お電話の上、「ジャパニーズホステス
プリーズ」とお伝えください。
どうぞよろしくお願いたします。

日本語乗船説明会および避難訓練



キュナード船初乗船のお客様向けに、
船内や重要事項について、および日本語で
避難訓練をご説明いたします。
救命胴衣を持参の上ご参加ください。

時間 4:00pm (約30分)
会場：イルミネーションズ
デッキ3、A階段近く

《イルミネーションズへのアクセス》
エレベーターBを使い、3階で降り、
劇場の入口両側(右舷側・左舷側
どちらからでも)に
ある窓に向かう階段を降り、
窓のある通路を船首に向かって進むと
入口があります。



シンガポール

全員乗船時間 6:00pm

緊急連絡先：Wallem Shipping Ltd. - Singapore
991 Alexandara Road #02-04/05, 119964, Singapore ☎+65 6271 2611
停泊地：Marina Bay Cruise Centre Berth 2.
レムチャバン(タイ)までの航海距離792海里(1海里=1.85キロ)

船長ピーター・フィルポットより

クイーン・メリー2の2018年ワールドボヤージにご乗船頂きまして、
誠にありがとうございます。船長ピーター・フィルポットはじめ、
オフィサー、乗組員一同、皆様のご乗船を、心より歓迎します。
本船での船旅が思い出に残る素晴らしいご旅行となりますことを、
心より望んでおります。それではレムチャバンに向けて出発です!
船内でごゆっくりとお過ごし下さいませ。



避難訓練のご案内(英語)

本日乗船されたお客様全員のご参加が、国際海事法により義務付けられています。
船内放送(緊急時の警報音)に合わせて客室にある救命胴衣とお部屋の鍵を持参の上、
各自集合場所にお集まり下さい。救命胴衣は着用しないで下さい。
クルーズカードおよび救命胴衣に記載のアルファベットと、客室ドア内側に
記された集合場所をご確認下さい。

別紙「安全に関する重要なお知らせと注意事項」をご一読下さい。

時間 5:00pm (約30分) 場所：デッキ7各指定の避難場所



本日のおすすめイベント・エンターテイメント

シンガポール 出港パーティ



インターナショナルバンド
「パープルヘイズ」の演奏
でシンガポールの
出港風景を
お楽しみください。

時間 5:30pm
テラスプール
デッキ8、D階段
※悪天候時にはバビリオン
プール(デッキ12、B階段)
に変更となります。

今夜のショータイム 乗船歓迎ショー



ロイヤルキュナードシンガーズ
&ダンサーズ、クイーンズルー
ムのボーカリスト・マイケルに
よる乗船歓迎ショー

時間 8:45pm & 10:30pm
ロイヤルコートシアター
デッキ2 & 3、B階段
※お食事がブリタニア1部の方は
8:45pmから、2部の方は
10:30pmからのショーをご覧下さい

社交&ラテン ダンス音楽



クイーンズルーム
オーケストラの生演奏、
マイケル・パークの
歌声で社交&ラテンダンスを
お楽しみください。

時間 8:30pm~11:30pm
クイーンズルーム
デッキ3、D階段

お荷物について

チェックイン時にお預かりしたお荷物は、直接客室にお届けします。その際、多少お時間がかかる場合や、お荷物がお一つずつ別々に届く場合もございます事を、ご了承願います。お荷物に関するお問い合わせは、パーサーズ・デスク（デッキ2 中央室22200）までご連絡下さい。



ブリタニアレストランのお席について

皆様のダイニングルームは客室のカテゴリーによって決められています。お席の番号が記されたカードが、客室に届けられています。ブリタニア・レストランのお席のご相談は乗船後 1:30pm～3:00pmにブリタニア・レストラン（デッキ2 後方）のレストラン支配人デスクまでお越し下さい。なおお席のリクエストはご予約された日にち順に確約され、すでにお二人様席はございませんのでご了承下さい。

船内アカウントについて

船内アカウントに現金でのデポジットまたはクレジットカードのご登録がございませんと、船内でお飲み物のご注文やお買い物が出来なくなりますので、未登録のお客は、パーサーズ・デスク（デッキ2、B 階段）でご登録をお済ませ下さい。

喫煙について

下記指定場所以外は客室、バルコニーを含め全て禁煙です。

- チャーチルズ・シガー・ラウンジ（葉巻&パイプのみ）
- オープン・デッキ（デッキ7 後方、デッキ8 後方左舷側）



WIFI 乗船日のお得なパッケージ

本日インターネットのパッケージをご購入なされると、ボーナスの分数がつきます。

- 480分+50分追加 \$167.95 ダイヤモンド会員様特典
- 240分+25分追加 \$89.95 プラチナ会員様特典
- 120分+15分追加 \$47.95 ゴールド会員様特典



ワールド・クラブ・メンバーの方はご自身の会員レベルに相応する分数を一旦ご購入下さい。自動的に払い戻しとなります。

キューナード・アクティビティ・リワードプログラム

英語または日本語デイリープログラムで、右記マークのついている アクティビティに参加され優勝しますと、リワードカードにスタンプがもらえます。下船日の前日にスタンプ数に応じて、色々な景品と交換できますので様々なアクティビティにご挑戦下さい。



コンシェルジュ郵便サービス

絵葉書や定型サイズのお手紙を一枚につき\$2.90で世界中どこでもお送りします。書き終えたお手紙、葉書きをパーサーズ・デスク（デッキ2、グランドロビー）にお持ちになるか、既に切手を貼付済みの場合はゴールド・ライオン・パブ脇の郵便ポストにご投函頂けます。

キューナード・ソフトドリンク・パッケージについて

ソーダ類とジュース類が飲み放題のパッケージを販売しております。（1日\$8.50×ボヤージ日数+15%サービス料）レストランやバーにて飲み放題となります。このパッケージは、クルーズ初日と翌日の二日間のみ販売で、全クルーズ日数分のご購入が必須です。購入された方にはクルーズカードに専用シールを貼ります。ご注文の際は毎回、スタッフにクルーズカードをご提示下さい。詳細はバースタッフに お問い合わせ下さい。（注：瓶と缶入りソーダ類飲み物、ペットボトルの水、ミニバー、ノンアルコールカクテル等はパッケージに 含まれません）



オルタナティブレストラン

本日のテーマ：メキシコ料理
本日特別価格 お一人様\$14.50
ご予約は☎25400（8am-6pm）
キングスコートオルタナティブ
デッキ7・C 階段・右舷側



レストランオープン時間

プリンセス&クイーンズ・グリル（デッキ7、D 階段）

ランチ	1:00pm～2:30pm
ディナー	6:30pm～9:00pm

ブリタニア・クラブ（デッキ2、D 階段）

ディナー	6:30pm～9:00pm
------	---------------

ブリタニア・レストラン（デッキ2&3、C&D 階段）

ディナー1回目	6:00pm（ラストオーダー6:30pm）
ディナー2回目	8:30pm（ラストオーダー9:00pm）

ベランダ・レストラン（デッキ8、D 階段）

ディナー	6:30pm～9:00pm（\$49.95）
------	------------------------

ご予約は 8am～6pm の間、☎25400 まで

キングス・コート・ブッフェ（デッキ7、B 階段）

ランチ	11:30pm～避難訓練開始まで
ハンバーガー&ホットドック	11:30pm～避難訓練開始まで
バーガー&ホットドッグステーション	11:30pm～3:00pm
ピザ&パスタステーション	6:00pm～9:30pm
ディナーブッフェ（前方左舷）	6:00pm～11:00pm
お夜食（後方）	11:00pm～2:00am

キングス・コート・オルタナティブ（デッキ7、C 階段、右舷）

アズテック（メキシコ料理）	7:00pm～9:00pm
---------------	---------------

特別価格\$14.50 ご予約は 8am～6pm の間、☎25400 まで

バー・ラウンジオープン時間

カリンシア・ラウンジ	12:00pm～11:00pm
シャンパン・バー	4:00pm～遅くまで
チャート・ルーム	4:00pm～遅くまで
コモドア・クラブ	避難訓練後～遅くまで
ゴールデン・ライオン・パブ	11:00am～遅くまで
G32（18歳以上）	9:30pm～遅くまで
バビリオン・プール・バー	12:00pm～7:00pm
サー・サミュエルズ	7:00am～11:00pm
テラスプールバー（天候次第）	10:00am～10:00pm
グリルラウンジ	11:00am～2:30pm, 6:00pm～12:00am

船内施設オープン時間

ブック・ショップ	7:00pm～9:00pm
キャニオンランチ	12:00pm～8:00pm
アート・ギャラリー	7:00pm～10:00pm
エンパイア・カジノ	7:30pm～遅くまで
フォトギャラリー	7:00am～9:00am, 6:00pm～8:00pm
図書室	3:00pm～8:30pm
メイフェア・ショップス	7:00pm～9:00pm
医務室	3:00pm～4:00pm

※緊急時は☎999 または 911 までお電話下さい

スポーツ	9:00pm～6:00pm
ツアー・オフィス	4:00pm～7:00pm
ボヤージュ・セールス（予約必須）	クローズ

医務室からのお願い

医務室は基本的に一日2回オープンいたします。オープン時間は毎日のデイリープログラムにてご確認ください。緊急時および、嘔吐や下痢の症状がありましたら、直ちに医務室（☎999 または 911）にご連絡下さい。船酔いのお薬はパーサーズオフィス（デッキ2 中央グランドロビー・24時間対応）で販売しています。



Daily Programme.



Your Senior Officers.

Master.

Captain Peter Philpott

Deck Department.

Deputy Captain Aureliano Mazzella
 Safety Officer Boris Ivanov
 First Officer Mark Solomon
 Security Officer Laurence Pilbeam & Gavin Parkes
 Environmental Officer Alexander Benton

Medical Department.

Senior Doctor Dr. Andrew Jackson
 Medical Officer Dr. Peter Erdmann

Technical Department.

Chief Engineer Jason Truman
 Staff Chief Engineer Ib Neilsen
 Ship's Services Engineer Viktor Chuy
 Chief Electrical Officer Dariusz Smolec
 First Engineer Josip Franovic & Matthew Mennie

Hotel Department.

Hotel General Manager David Shepherd
 F&B Manager David Lea
 F&B Services Manager Philip Gray
 Executive Chef Klaus Kremer
 Senior Maître d'Hôtel Oliver Guzman
 Bars Manager Mateusz Studzinski
 Housekeeping Manager Andrea Kaiser
 Hotel Ops & Retail Manager Anton Nootenboom
 Customer Services Manager Milica Grantham
 Night Duty Manager Melony Koopman
 Entertainment Director Amanda Reid
 Asst. Entertainment Director Christopher Thomas
 Social Host Tommi Baxter-Hill
 Shore Excursion Manager Beatrix Bense
 Loyalty & Voyage Sales Hinano Yeo & Christopher Foy

HR Department.

HR Manager Stuart Smart
 Learning and Development Officer Scott Sheppard

Ballroom & Latin Dancing.



Dance to the Queens Room Orchestra in the majestic setting of our ballroom. Under the musical direction of Blake Waters, featuring vocalist Michael Burke.
8.30pm, Queens Room, Deck 3, Stairway D

Welcome to Singapore, as Queen Mary 2 continues her 2018 World Voyage.



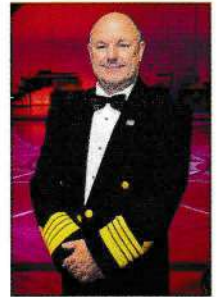
Singapore.

All Aboard Time: 6.00pm

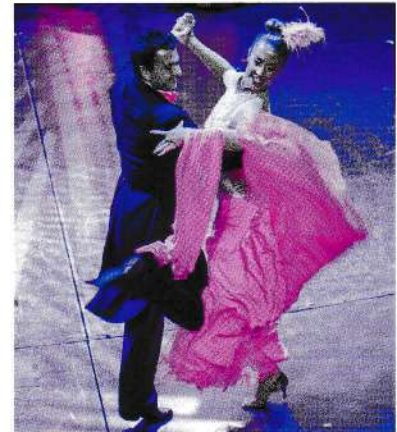
Singapore, officially the Republic of Singapore is an island city-state, located at the southern tip of the Malay Peninsula. It consists of 63 islands, including mainland Singapore. The main island, widely known as Singapore Island, is officially called Pulau Ujong. The name Singapore was derived from Malay words singa (lion) and pura (city), which in turn derived from Sanskrit. Folklore attributes this name to a 14th-century Sumatran prince Sang Nila Utama, who, on alighting the island after a thunderstorm, renamed it Lion City after spotting an auspicious beast identified as a lion.

Captain Peter Philpott.

The Captain, his officers and crew, welcome on board all our embarking guests for our 2018 World Voyage. You will be sure to make enchanted memories on this wonderful voyage. We wish you a pleasant journey and a relaxing holiday as Queen Mary 2 sets sail to our next port of call, Laem Chabang.




Tonight's Entertainment, Welcome Aboard Show.



Hosted by Entertainment Director Amanda Reid. Introducing the Royal Cunard Singers and Dancers and the Queens Room vocalist Michael Burke. With the Royal Court Theatre Orchestra under the musical direction of Jeff Hughes.

At 8.45pm & 10.30pm
Royal Court Theatre, Decks 2 & 3, B Stairway



Today's Movie.

'Passengers.'

Starring Chris Pratt, Jennifer Lawrence, Michael Sheen, Laurence Fishburne, Andy Garcia.

A spacecraft traveling to a distant colony planet and transporting thousands of people has a malfunction in its sleep chambers. As a result, two passengers are awakened 90 years early.

Rated: PG-13
(Duration: 114 minutes)
 7.00pm & 10.00pm
 Royal Court Theatre, Forward Deck 1, 2 & 3



Embarkation Information.

Queens Grill & Princess Grill.

Lunch 1.00pm to 2.30pm
Dinner 6.30pm to 9.00pm

Britannia Club.

Dinner 6.30pm to 9.00pm

Britannia Restaurant.

First Seating Dinner 6.00pm, (last order 6.30pm)
Second Seating Dinner 8.30pm, (last order 9.00pm)

Kings Court Buffet, Deck 7 (B Stairway).

Lunch Buffet, Forward 11.30am until drill
Lunch Buffet, Aft 11.30am until drill
Chef's Galley: Burger & Hot Dog Station 11.30am until 3.00pm
Chef's Galley: Pizza & Pasta Station 6.00pm to 9.30pm
Dinner Buffet, Deck 7, Forward, Port 6.00pm to 11.00pm
Late Snack Buffet, Aft 11.00pm to 2.00am

Kings Court Alternative Dining (C Stairway).

For tonight only, a special, discounted \$14.50 cover charge applies.
For reservations, please dial 25400 between 8.00am & 6.00pm.
Aztec (Mexican cuisine)..... 7.00pm to 9.00pm

The Verandah Restaurant.

Dinner 6.30pm to 9.00pm
Cover charges apply - Dinner \$49.95.
For reservations please call 25400 between 8.00am & 6.00pm.

Bars & Lounges.

Carinthia Lounge (Light snacks 1.00pm to drill) 12.00pm to 11.00pm
Champagne Bar 4.00pm to late
Chart Room 4.00pm to late
Commodore Club After drill to late
Empire Casino Bar As per casino opening hours
Golden Lion Pub 11.00am to late
Pub Lunch 12.00pm to 2.30pm
G32 9.30pm to the wee small hours
..... (Guests under the age of 18 are not permitted in G32)
Pavilion Pool Bar 12.00pm to 7.00pm
Sir Samuel's 7.00am to 11.00pm
Terrace Pool Bar (weather permitting)..... 10.00am to 10.00pm
Grill Lounge (Grill guests only please)
..... 11.00am to 2.30pm & 6.00pm to 12.00am

Facilities and Retail.

Book Shop 7.00pm to 9.00pm
Library 3.00pm to 8.30pm
Canyon Ranch 12.00pm to 8.00pm
Clarendon Fine Art 7.00pm to 10.00pm
Empire Casino 7.30pm to late
Images Photo Gallery 7.00am to 9.00am & 6.00pm to 8.00pm
Internet Centre (open 24 hours) Assistance: 3.00pm to 9.00pm
Mayfair Shops 7.00pm to 9.00pm
Medical Centre 8.00am to 9.00am & 3.00pm to 4.00pm
..... (dial 911 or 999 for medical emergencies only)
Tour Office 4.00pm to 7.00pm
Voyage Sales Appointments Only Closed
Registration in the Zone (Deck 6 Aft) 6.00pm to 8.00pm
The Zone (2-17s) 6.00pm to 11.00pm
Night Nursery 6.00pm to 11.00pm

Dress Requirements.

Daytime wear:

Stylish casual wear, including shorts and smart jeans, is fine during the day on board, in keeping with the ship's elegant surroundings. Swimsuits, micro shorts, sarongs and gym wear should be reserved for Poolside, on Deck or in the Spa and Fitness Centre. Please note that swimwear must be covered up before entering any enclosed areas.

Evening wear:

After 6.00pm shorts (for men and women) and sandals and sleeveless tops (for men) are not considered appropriate within the ship. Any guests wishing to dress more casually than the given dress code are welcome to dine in the Kings Court buffet on Deck 7, relax in the Carinthia Lounge, and enjoy live/DJ music and dancing at our night club, G32. However, please do not use other areas within the ship, including our Verandah Restaurant and Alternative Dining Restaurant, out of respect for other fellow guests and the ambience of the evening.

Formal:

Dinner jacket, tuxedo or dark suit with tie for gentlemen.
Evening or cocktail dress for ladies.

Informal:

Jacket required, tie optional for gentlemen.
Cocktail dress, stylish separates or equivalent for ladies.

For guests wishing to plan ahead, the dress code and the evening Queens Room activities throughout your voyage are as follows (evening activities are subject to change):

Friday, 23 March 2018	Singapore	Informal
Saturday, 24 March 2018	At Sea	Formal (Black & White Ball)
Sunday, 25 March 2018	Laem Chabang	Informal
Monday, 26 March 2018	At Sea	Formal
Tuesday, 27 March 2018	Phu My	Informal
Wednesday, 28 March 2018	At Sea	Formal
Thursday, 29 March 2018	At Sea	Informal
Friday, 30 March 2018	Hong Kong	Informal

Britannia Restaurant Seating Enquiries.

The Britannia Restaurant, Deck 2 entrance, will be open from 1.30pm to 3.00pm for seating enquiries. A seating card will be placed in your stateroom or suite during embarkation. Kindly note that table assignments have been allocated by the date you booked your voyage and the Maitre d'Hôtel will be following the company policy. Please refer to your booking terms and conditions. We regret that tables for two are no longer available.

Luggage Delivery.

Your luggage will be delivered directly to your stateroom/suite. Please be aware that this process takes a considerable amount of time and we ask for your patience and understanding. It is not unusual for bags within the same party to be separated so please do not be alarmed if only some of your luggage pieces arrive. Please report any luggage problems to the Purser's Office.

Register a payment method.

Please ensure that you have registered a payment method (cash or credit card) against your on board account. You can do so at the Purser's Office. If no payment method has been registered, your account will be automatically changed to 'protected status' and you will be unable to charge to your account.



Today's Activities.

12pm

12.00pm Imprezza String Quartet
Grand Lobby, Deck 2, Stairway B (until 12.45pm)

12.45pm Pianist Miklos Szabo
Grand Lobby, Deck 2, Stairway B

1pm

1.30pm Imprezza String Quartet
Grand Lobby, Deck 2, Stairway B (until 2.15pm)

2pm

2.00pm Social Beat The Board (unhosted)
Pavilion Pool, Deck 12, Stairway B

2.15pm Pianist Miklos Szabo
Grand Lobby, Deck 2, Stairway B

3pm

3.00pm Pianist Andrew Cavendish-Grey
Carinthia Lounge, Deck 7, Stairway B (until 3.45pm)

3.00pm Imprezza String Quartet
Grand Lobby, Deck 2, Stairway B (until 4.00pm)

3.30pm Queens Room Afternoon Tea
Featuring pianist Miklos Szabo.
Queens Room, Deck 3, Stairway D (until 4.30pm)

4pm

4.00pm Friends Of Bill W.
Boardroom, Deck 9, Stairway A (Port) (until 5.00pm)

5pm

5.00pm Guest Emergency Drill
Please listen to announcements made by the Bridge for further instructions. Mandatory for all guests who embarked today. Please note that the Gymnasium and King's Court areas are closed during the drill.
Throughout the ship (approximate duration: 30 minutes)

5.00pm LGBT Social Hour
Commodore Club, Deck 9, Forward (Starboard) (until 6.00pm)

5.15pm Jewish Sabbath Service
We kindly ask a guest to lead the service.
ConneXions Room 4 & 5, Deck 2, Stairway A

5.30pm Hooplah Tournament
Pavilion Pool, Deck 12, Stairway B

5.30pm Sailaway Celebration with Purple Haze
Join our International Band and the Entertainment team on Deck 8. Aft as Queen Mary 2 sets sail from Singapore.
Terrace Pool, Deck 8, Stairway D
(Inclement weather venue: Pavilion Pool, Deck 12, Stairway B)

5.30pm Solo Guitarist Paul Garthwaite
Golden Lion Pub, Deck 2, Stairway C (Starboard) (until 6.00pm)

5.45pm Harpist Fiona McGee
Carinthia Lounge, Deck 7, Stairway B (until 6.30pm)

5.45pm Imprezza String Quartet
Chart Room, Deck 3, Stairway C (Starboard) (until 6.30pm)

6pm

6.00pm All Aboard!
All guests must be on board by this time. Shortly after, the gangway is raised and Queen Mary 2 will depart for Laem Chabang, a distance of 792 nautical miles (1 nautical mile equals 1.15 statute miles, or 1.85 kilometres).

7pm

7.00pm Movie: Passengers
Please see the front page of the daily programme for more details.
Illuminations, Decks 2 & 3, Stairway A

7.00pm Pub Duo 'Amethyst'
Join our resident pub duo 'Amethyst' in the most traditional British pub on the seven seas.
Golden Lion Pub, Deck 2, Stairway C (Starboard) (until 7.45pm)

7.45pm Harpist Fiona McGee
Carinthia Lounge, Deck 7, Stairway B (until 8.30pm)

7.45pm Pianist Andrew Cavendish-Grey
Chart Room, Deck 3, Stairway C (Starboard) (until 8.30pm)

7.45pm Pianist Miklos Szabo
Commodore Club, Deck 9, Stairway A (until 8.30pm)

7.45pm Recorded Strict Tempo Music
Queens Room, Deck 3, Stairway D (until 9.45pm)

8pm

8.00pm Early Evening Trivia
Golden Lion Pub, Deck 2, Stairway C (Starboard)

8.30pm Ballroom & Latin Dance Music
Dance to the Queens Room Orchestra in the majestic setting of our ballroom. Under the musical direction of Blake Waters, featuring vocalist, Michael Burke.
Queens Room, Deck 3, Stairway D (until 12.00am)

8pm

8.45pm Showtime: Welcome Aboard Show
Presented by your Entertainment Director, Amanda Reid.
Royal Court Theatre, Decks 2 & 3, Stairway B

9pm

9.30pm Pub Duo 'Amethyst'
Join our resident pub duo 'Amethyst' in the most traditional British pub on the seven seas.
Golden Lion Pub, Deck 2, Stairway C (Starboard) (until 10.00pm)

9.30pm The Jazz Club
With the Mark Hodgson Trio.
Chart Room, Deck 3, Stairway C (Starboard) (until late)

9.45pm Harpist Fiona McGee
Carinthia Lounge, Deck 7, Stairway B (until 10.30pm)

9.45pm Live Music with Purple Haze
G32, Deck 3, Stairway D (until 10.45pm)

10pm

10.00pm Pub Team Trivia
Join the Entertainment Team for some classic pub trivia fun.
Golden Lion Pub, Deck 2, Stairway C (Starboard)

10.00pm Movie: Passengers
Please see the front page of the daily programme for more details.
Illuminations, Decks 2 & 3, Stairway A

10.00pm Pianist Andrew Cavendish-Grey
Commodore Club, Deck 9, Stairway A (until 12.00am)

10.30pm Showtime: Welcome Aboard Show
Presented by your Entertainment Director, Amanda Reid.
Royal Court Theatre, Decks 2 & 3, Stairway B

10.45pm Welcome Disco With DJ Chris
G32, Deck 3, Stairway D (until 11.30pm)

10.45pm Pub Duo 'Amethyst'
Join our resident pub duo 'Amethyst' in the most traditional British pub on the seven seas.
Golden Lion Pub, Deck 2, Stairway C (Starboard) (until late)

11pm

11.30pm Live Music with Purple Haze
G32, Deck 3, Stairway D (until 12.30am)

12am

12.00am Dance Music For Enthusiasts
Recorded ballroom and latin music.
Queens Room, Deck 3, Stairway D (until 12.30am)

12.30am All Request Express with DJ Chris
Dance the night away in Queen Mary 2's night club, with DJ Chris.
G32, Deck 3, Stairway D (until late)

CANYON RANCH Spa Club

Welcome to Canyon Ranch.

Explore the singular day spa that perfectly complements your Queen Mary 2 experience. Canyon Ranch SpaClub® elevates every spa treatment, environment and activity to unprecedented levels. This section of your Daily Programme will be where you can find a daily schedule of fitness activities and wellbeing seminars to enhance your time on board.

- 12.00pm Canyon Ranch: 'The Power Of Possibilities'**
Canyon Ranch Spa Club welcomes you aboard. Visit our Spa Club facilities and discover the array of treatments Canyon Ranch has to offer. You'll find a place where you can relax, reduce stress and have a great time.
Canyon Ranch Spa Club, Deck 7, A Stairway (until 8.00pm)
- 1.00pm Acupuncture Clinic Now Open - Complimentary Consultations Available**
Acupuncture is a time tested health care system that heals and balances from the inside out, working on the root cause of various health concerns.
Canyon Ranch Spa Club, Deck 7, A Stairway (until 8.00pm)
- 1.00pm Chiropractic Clinic Now Open - Complimentary Consultations Available**
A chiropractic treatment works on various health issues as well as preventive care and includes restoring the body's mechanical disorders through manual therapy.
Canyon Ranch Spa Club, Deck 7, A Stairway (until 8.00pm)
- 1.00pm Introduction to Fitness**
Join your Fitness Directors and discover the benefits of maintaining a healthy lifestyle on board. Learn about our voyage-long fitness package, keeping you on the road to living younger and longer.
Canyon Ranch Spa Club, Deck 7, A Stairway (until 8.00pm)

A message from the Entertainment Director.



I would like to extend a warm welcome to all guests joining us in Singapore today. I hope you will enjoy the facilities and activities on board as we set sail to Laem Chabang. My staff and I are delighted to provide you with an array of activities, enrichment and entertainment. The Daily Programme provides you with all essential information about Queen Mary 2 and is delivered to your stateroom/suite every evening for the following day. As part of our award-winning Cunard Insights Enrichment Programme, we are proud to present the following speakers this voyage:

- Celebrity Speaker, Jim Kennedy (23 March to 31 March)
- Dr Denny Whitford, Marine Scientist and Deep Sea Explorer
- Andrew Barber, British Diplomat
- Dr. Joe Golden, Scientist/Research Meteorologist
- Anne Marie Harrison, Anthropology and Local Culture
- Pamela Chen Moore, Cultural and Cookery Expert

We are proud to present Former Director of NASA's Kennedy Space Centre, Jim Kennedy who will share the excitement of Space Exploration past, present and future. Mr. Kennedy retired from NASA as the Director, John F. Kennedy Space Center (KSC) in 2007 after 36 years of service. As Director he was responsible for 15,000 men and women who processed, launched (and landed as appropriate) the Space Shuttle, International Space Station and Expendable Launch Vehicles. His education includes a BS Mechanical Engineering from Auburn, University and MBA from Georgia Southern University. Retirement has brought opportunities to tour with the Mannheim Steamroller Band, consult with the aerospace industry, and lecture on Space Exploration and Leadership around the world (estimated 1,000 lectures to date).

We have a number of lectures planned for each day at sea, and I am sure you will find them both interesting and enriching. In addition, we have a number of in-house staff who offer their expertise on an assortment of topics such as health and fitness with Canyon Ranch, expert jewellery advice from our on board boutiques, and insights into the art world with our resident exhibitors, Clarendon Fine Art and a wealth of knowledge about Apple devices and software from our Guest Computer Services Manager.

In the evenings we present a spectacular show in the Royal Court Theatre. We have a wonderful cast, the Royal Cunard Singers and Dancers, as well as guest artistes and entertainers to make every showtime special and exciting. We are also joined by classical artists Brass & Ivories this voyage, who will conduct a number of recitals.

Queen Mary 2 presents the only Planetarium at sea and we invite you to enjoy exciting out of this world Planetarium films on selected sea days.

Once again, welcome aboard, and enjoy the many things to do on board Queen Mary 2.

Amanda Reid - Entertainment Director - Queen Mary 2

From the Purser's desk.

Ship's Agent.

Wallem Shipping Ltd. - Singapore
991 Alexandra Road #02-04/05, 119964, Singapore
Telephone: +65 6271 2611, for emergencies while ashore.

Berth.

Marina Bay Cruise Centre Berth 2.

Currency.

Legal tender in Singapore is the Singapore Dollar (SGD). Singapore Dollars are available from the Purser's Office. Please be aware that the Purser's desk will only buy or sell the following denominations SGD10 and SGD 50.

Postage Service.

Postcards and letters can be mailed at the Purser's Office. Our flat rate service charge for the current voyage is \$2.90 per postcard/letter. If you already have a stamp on your letter or postcard, we can still post it for you at the Purser's Desk or you can use the post box outside the Golden Lion Pub.

Dress requirement: Informal.

Cocktail dress or stylish separates for ladies. Jacket required, tie optional for gentlemen. No jeans or shorts. Please note that after 6.00pm, shorts and blue or worn denim (for men and women); sandals and sleeveless tops (for men) are not considered appropriate within the ship. Any guests wishing to dress more casually are welcome to dine in the Kings Court Buffet on Deck 7, relax in the Carinthia Lounge, and enjoy live/DJ music and dancing at our night club, G32. However please do not use other areas within the ship, including our Verandah Restaurant and Alternative Dining Restaurant, out of respect for other fellow guests and the ambience of the evening.

Passport information: Singapore.

All guests are required to carry their passports and Singaporean Arrival and Departure card ashore for Immigration formalities which are conducted in the Terminal Building ashore. Should you have gone ashore the evening before, then your passport and Singaporean Departure Card is sufficient.

General Emergency Stations Drill.

This afternoon an emergency drill will be held. It is a requirement of law that after boarding the ship, all newly embarking passengers must attend and be instructed in their General Emergency Stations. On commencement of this exercise, broadcasts will be made and alarm bells sounded, calling you to your assembly stations as indicated on the notice behind your stateroom door. Your guest identification card will be scanned at your muster station to record your attendance. Please ensure all members of your party, including children, have their identification cards ready for scanning. Please carry your lifejacket with you, do not wear it and for safety's sake do not allow the belt to trail on the deck. The correct method of wearing a lifejacket will be demonstrated to you at the end of this muster.

For those guests continuing on your voyage, you are welcome to attend this muster to re-familiarise yourself with the safety procedures should you wish, and we would draw to your attention that the broadcasts relating to this drill will be relayed through all the public areas and restaurants which is a legal requirement. During this exercise many services will cease. We apologise for any resulting delay in resuming the ship's services and thank you for your co-operation in these matters of our mutual safety.

Complimentary Shuttle Service

Complimentary shuttle service will operate from 8.30am to the Marina Sands Convention Centre which links to the Marina Bay Sands Hotel and The Shoppes at Marina Bay Sands with lots of restaurants, shops, casino as well as the Marina Bay Sands Sky Park Observation Deck. The last departure back to the ship will be at 5.00pm. Unfortunately no accessible bus will be available for this service. Marina Square Mall (about 20-25 minutes walk from the drop off point) also offers lots of shops and restaurants. As an alternative, taxis will be available at the terminal; please follow the 'Taxi' signs and walk out through the ground floor coach parking level of the terminal, all the way to the end of the building where you find the official taxi stand.

Marina South Pier MRT (Metro Station)

The Marina South Pier MRT (Metro Station) is easily accessible, approx 600 meters away from the Cruise Terminal through a partially sheltered path. The Metro Station is the end stop of the North-South Line (Red Line) and connects Marina Bay Cruise Centre with the main and central locations in Singapore, such as Orchard Road. The metros offer a fast and efficient service departing every 5-10 minutes to the central locations. City Hall Station only takes approximately 10-12 minutes and Orchard Road Station takes 20 minutes.

Fares for single trip tickets range from S\$1.40 to S\$2.50 purchased from general ticketing machines in the Metro Station. The general ticketing machines only accept coins S\$0.10, S\$0.20, S\$0.50, S\$1.00 and notes S\$2.00 & S\$5.00. If purchasing multiple tickets that exceed total of S\$5.00, the machine will have an additional choice to accept S\$10.00 notes. However, the maximum change from the machine is only S\$4.00. The MRT machines only accept Singapore dollars and there is no money exchange at the station, however money exchange is available at the Marina Bay Cruise Terminal at Level 2. This is a quick and efficient way to explore Singapore independently.

Raffles Hotel, Singapore - Currently Closed.

Singapore's classic heritage Raffles Hotel is currently under renovation and will not open till late 2018.



Discover...

Getting the most from your voyage.

Internet Embarkation special.

530 minutes for \$167.95
265 minutes for \$89.95
135 minutes for \$47.95

Keep in touch with friends and family.

Purchase by 6.00pm on 24 March to receive the embarkation special.

Log in to the ship's wifi or visit **ConneXions Room 1, Deck 2, A Stairway**



Stay Connected.

Friday, 23 March 2018 On board Queen Mary 2...

Welcome Onboard Favourites.

Buy one Aqua Therapy Voyage Pass and get one pass free when you take a Spa tour between 1.00pm to 3.30pm.

Saving of \$120

Canyon Ranch Manicure & Pedicure.

\$120 plus free paraffin wax treatment.

Saving of \$83

Spa Services.

80 minutes for the price of 50 minutes all day (plus if you have treatment between 1.00pm to 3.30pm you will also receive a complimentary revitalizing foot treatment).

Complimentary hair conditioning treatment with every cut or colour.

Cruise Long Special.

Purchase three spa treatments and receive the fourth for free.

CANYON RANCH
SpaClub



Terms and conditions apply. A 12.5% service charge is added to all services.

Visit the Canyon Ranch SpaClub®, Deck 7, A Stairway

Cunard Soft Drinks Package.

A one-time payment allows you to enjoy unlimited fountain sodas and juices for the entire voyage (in transit guests will be required to purchase again for the next leg of the voyage).

For more information visit any of the bars or restaurants onboard.

\$8.50 per day

with a 15% service charge.

The package does not extend to bottled waters, in-cabin bar service or to any other non alcoholic beverages.



The Verandah.

The Verandah restaurant draws inspiration from the Verandah Grill on the original Queen Mary, and its contemporary décor playfully echoes the murals and Art Deco patterns. The menu is a celebration of fine, contemporary French cuisine with seasonal influences and specially selected ingredients chosen to evoke the flavours of great regional cooking from southern France.

Lunch \$20.00

Dinner \$49.95

For reservations, please call 25400 between 8.00am & 6.00pm

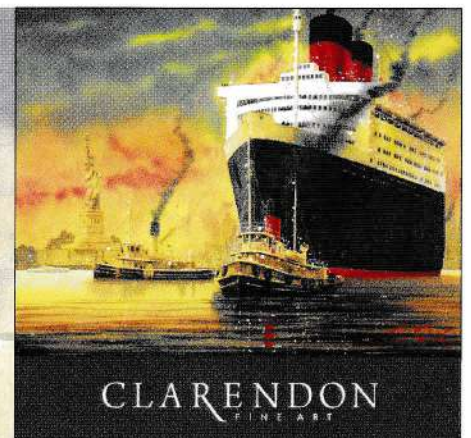


Clarendon Fine Art. Register your interest.

Visit the Clarendon Art Gallery on Deck 3 to register your interest in the art events this voyage. Sarah will provide you with a guide of the talks and events that will be hosted during your time on board.

7.00pm to 8.00pm

**Clarendon Fine Art Gallery,
Deck 3L, C or D Stairway, Starboard Side**



CLARENDON
FINE ART

The Wine Line.

To assist you in selecting the perfect wine or wine package to complement your fine dining experience this voyage, we have a dedicated Wine Line.

Telephone 22062, from 10.00am to 1.00pm, to speak with one of our knowledgeable Sommelier's.



Empire Casino.

Easy. Secure. Rewarding.

Play your favourite Table Games and Slot Machines/ Pokies directly from your guest identification card. Insert your guest identification card and set up your personal account. No coins. No worries. No problems.

A winner for beginners.

We will add a \$5 bonus to your first \$20 played at the slot machines/ pokies.

Enjoy complimentary drinks as you play the slot machines,

We'll help add a sparkle to your evening with complimentary drinks when you play.

Empire Casino, Deck 2, B Stairway



A message from the Tour Office.

A very warm welcome from the Tour Office. Pre-booked tickets will be delivered to your stateroom this evening. Avoid waiting in line: please place your tour or transfer booking form in the drop-off box located outside the Tour Office. To learn more about your excursion options for this voyage, watch the port presentation shown on Channel 49 on your stateroom TV.

Tour Office, Grand Lobby, Deck 2, B Stairway



Rewards

Receive your embarkation photograph worth \$24.95 free with a Cunard Album.



WINE LINE • CUNARD • CUNARD • CUNARD
WINE LINE • CUNARD • CUNARD • CUNARD

Royal Arcade.

Welcome onboard to all guests that embarked today in Singapore. Come and visit us at the Royal Arcade on Deck 3, where everything is tax and duty free. We have a wonderful range of fine jewellery, luxury watches and handbags, beautiful fragrances and cosmetics, clothing and exclusive cruise souvenirs. We also have a formal suit rental service with a range of stylish accessories to choose from. Visit the shops to find out what's on offer, and discover our forthcoming promotions and seminars.

Royal Arcade, Deck 3, Forward

Barbour **RADLEY** **RALPH LAUREN**
LONDON



Welcome to the Commodore Club.



Steering the fleet ever-forward through their unfaltering precision and expertise, Cunard's Commodores have sailed our ships across the seas for almost two centuries. Here we lend those same principles to every drink served, in spirit. Through a distinguished selection of contemporary cocktails, the characters of the seven most decorated Commodores are artfully distilled for your delectation and discovery. In concert with elegant aperitifs and relaxed evening entertainment, we invite you to savour their view of the world as it unfurls across the bow.

Commodore Club, Deck 9, A Stairway

New 2019-2020 voyages.

Singapore to Tokyo - 18 nights
24 March 2020 to 11 April 2020

Departing from the 'Lion City' of Singapore, graceful Queen Elizabeth glides forth on a grand and unforgettable journey of onshore discovery and on board delights.

Singapore, Da Nang, Hanoi, Hong Kong (overnight),
Shanghai (overnight), Busan, Kobe, Tokyo.

Enjoy 5% Cunard World Club member discount before 30 June 2018 and receive onboard credits of up to US\$400 per person when you reserve this voyage onboard.

The earlier you book the more choice of staterooms or suites for you to choose from for your World Voyage.

For more details and reservation, please call 22339 (Yoyo) to arrange a private appointment. Voyage Sales Office is located on Deck 2, opposite the Royal Court Theatre (port).

