

DEFINING MOMENTS

SUMMER 2026



Building Better Care

Together

Expanding Primary Care: Where Your Care Begins and Grows on **Page 6**

Paddling Towards a Healthy Future: Celebrate the 10th Annual Minocqua Dragon Boat Festival on **Page 8**

Reaching our Autism Services Further with the Little STARS Birth to 7 Program on **Page 14**



Howard Young
Foundation

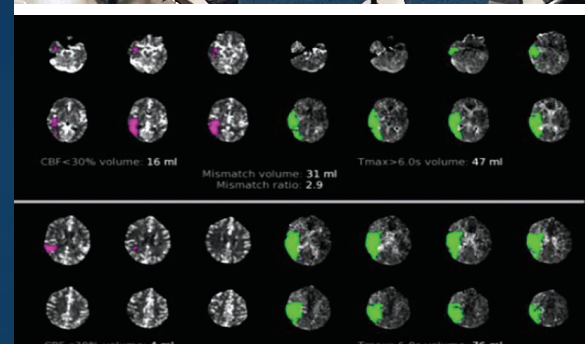
Building Better Care *Together*

Summer in the Northwoods has a way of bringing people closer through shared moments, simple joys, and time spent in the places we love most.

It's also a reminder of what's possible when we come together. Through your generosity, we are building better care together – ensuring that compassionate, high-quality healthcare is here for our families, friends, and neighbors in every season. Wishing you a beautiful summer filled with health, happiness, and moments to hold onto.



Read about the new Little STARS Birth to 7 Program on Page 14



Learn more about how perfusion scanning is changing imaging in the Northwoods on Page 12



Feel the energy of the 10th Annual Minocqua Dragon Boat Festival on Page 8



Donors Advance Emergency Services in Eagle River on Page 11

CONTENTS

- 4 Letter from the Chairman and the President
- 5 Where Rest Becomes Recovery
- 6 Where Your Care Begins and Grows
- 8 Paddling Towards a Healthy Future
- 10 UTV Ambulance: Care without Limits in the Northwoods
- 11 A Beacon of Hope: Building Momentum in Eagle River
- 12 Your Gifts in Action: When Every Second Matters, You Made the Difference
- 13 Caring for the Whole Person: Expanding Treatment at the Tick-Borne Illness Center
- 14 Reaching Further: Support Families From the Very Start
- 16 Power of Philanthropy: Recognizing our Donors
- 22 Annual Community Events

Special Thanks

Shawn Stigsell
Stigsell Creative, Art Director

Carrie Hoyer
Howard Young Foundation Board of Directors, Marketing Chair, and Executive Committee Member at Large

Aaron Duemmel
Drone Pilot

And to all who shared their stories.

Connect

TEL: 715.439.4005
EMAIL: info@hyfinc.org
WEB: howardyoungfoundation.org

MAILING ADDRESS
Howard Young Foundation, Inc.
P.O. Box 10
Minocqua, WI 54548

OFFICE LOCATION
Howard Young Foundation, Inc.
420 Oneida Street, Suite #100
Minocqua, WI 54548



Dear Friend,

As we look across the stories in this issue of Defining Moments, one idea rises to the surface again and again: meaningful progress doesn't happen all at once. It is built, piece by piece, through shared vision, generosity, and a deep belief in what's possible.

This issue, Building Better Care Together, reflects that spirit in action.

Across our region, we are seeing what it truly means to invest in the future of healthcare. From expanding access to emergency services, to strengthening diagnostic capabilities, to supporting innovative programs that meet patients where they are, each step forward is part of something larger. These are not isolated efforts; they are connected investments that are strengthening care in ways our community can feel every day.

None of this happens without you.

Your generosity is helping lay the groundwork for what comes next. It is creating opportunities, strengthening services, and ensuring that when care is needed, it is here, ready when it matters most.

We are grateful to stand alongside you in this work.

Because of you, families can find comfort in knowing that care is close, that help is there, and that their community is behind them in life's most important moments.



Trig Solberg, Board Chairman
Howard Young Foundation



Erin Biertzer, President
Howard Young Foundation

Our Mission

The Howard Young Medical Center was built in 1977 through a very generous bequest provided by philanthropist Howard Young. Bearing his name to honor his philanthropic gift, the Foundation was established in 1984 to advance the health and wellness of all people in the communities we serve through your charitable support.



Trig Solberg



Erin Biertzer

BOARD OF DIRECTORS

TRIG SOLBERG
Board Chairman

ERIN BIERTZER
President

ALDO MADRIGRANO
Vice Chairman

MARK PITMAN
Secretary

GREG NICKLAUS
Treasurer

CARRIE HOYE
Executive Committee Member at Large & Marketing Committee Chair

MOLLY AHLBORN

DICK GUSTAFSON

BILL HOPPER

TOM JOYCE

RICHARD REINHART, MD

JUDY RUSSELL

GLENN SCHIFFMANN

BARRY SEIDEL, MD

TERI THEILER

GREGG WALKER

Where Rest Becomes Recovery

Because of you, we are building better care together, right here at Howard Young Medical Center.

With the generosity of our community and the support of a matching gift from Aspirus, the Rest Becomes Recovery Appeal exceeded its goal, bringing 18 new Stryker ProCuity beds to the ICU and Medical-Surgical Unit by the end of the year. It's a powerful reflection of what's possible when our community comes together with a shared purpose.

Their impact is simple and profound: greater comfort for patients, added safety at the bedside, and thoughtful features that support nurses in the care they provide every day. As Meghan Coyle, Manager of

Nursing for Med/Surg and ICU shares, "When patients are comfortable and able to truly rest, everything changes - they heal better, they feel better. These beds, along with the technology behind them, are helping us care for patients in a safer, more effective way every day."

This is what it looks like to build better care together. Because of you, patients will rest easier, caregivers will be better supported, and healing can happen in a safer, more comfortable environment.

To support other projects that promote healing at our hospitals, give a gift at howardyoungfoundation.org today.



18 Stryker ProCuity beds 10 for ICU and 8 for Medical Surgical Unit.



Every gift was **matched** by Aspirus, doubling the impact.



Where *Your Care* Begins and Grows

Choosing Aspirus for your family’s primary care creates a ripple effect, supporting your own health and the health of our entire community.

Because more patients and families across the Northwoods continue to choose Aspirus for their care, access to primary care has grown making it possible to welcome two new Aspirus Medical Group providers at Howard Young Medical Center (HYMC). As this team expands, it is building the foundation for something bigger, and we are grateful for the role patients play in making this momentum possible.

Progress is already being felt. With more primary care providers in place, patients are able to be seen, diagnosed, and referred more efficiently, creating the kind of coordinated, consistent care environment that specialists look for when choosing where to practice. Patients now have expanded access to orthopedic care locally, and in the months ahead, additional general surgeons will begin offering appointments at HYMC, further strengthening the care available across the Northwoods.

“We’ve been working hard to build that foundation,” shares Teri Theiler, President - Aspirus North Division, “and that has allowed specialists to want to come here and grow those services with us.”

And just as choosing care at HYMC plays a role in that growth, so does your support.

As services grow, so does the need for advanced technology, expanded spaces, and continued investment in our hospitals. The momentum we are seeing today reflects both the generosity of donors like you and your decision to choose Aspirus for your care, opening the door to what comes next.

Our continued support of these hospitals is being noticed. It is attracting providers, expanding services, and earning top honors nationally on lists such as the inaugural Forbes Top Hospitals 2026. We are shaping the future of care in our region.

Because of you, this is just the beginning.

Help us continue building momentum by giving a gift to one of our hospitals’ greatest needs funds at howardyoungfoundation.org.

ORTHOPAEDIC SURGEON
Jeffrey Meincke-Reza, MD

Dr. Meincke is a board-certified orthopedic surgeon specializing in general orthopedic care, including total joint procedures. Since joining HYMC in August 2025, he has brought a strong focus on precision, outcomes, and patient-centered care. He sees patients weekly at HYMC.

▶ **To make an appointment, call: 715-369-2300**



Meet The Primary Care Providers

Behind every visit is a team dedicated to more than just care. They are building relationships, earning trust, and showing up for patients in ways that truly matter. Your support is helping this team grow, strengthening care today and opening the door to what comes next.



Margaret Alvarez, ACNP



Beede McKinney, APNP, DNP



Tracy Clay, APNP



Dr. Larson, MD



Dr. Jast, MD



Lisa Meza, PAC



Taylor Koehnen, PAC



Catherine Ziegler, APNP

New in 2025



Scan or Call: **715-356-8140**

Schedule *Your* Appointment Today!



Paddling Towards a *Healthy Future*

For ten years, the Minocqua Dragon Boat Festival has brought our community together in a truly special way, united by purpose, energy, and heart.

What began in 2016 as a fun, free, family event has grown into a Northwoods tradition, welcoming thousands of spectators and more than 200 teams from across the country and Canada. To every sponsor, paddler, volunteer, and donor who has been part of this journey, THANK YOU.

Each year, every stroke of the paddle has carried us forward - toward better care, stronger services, and a healthier future for all.



 **201**
TEAMS

 **4,475**
PADDLERS
Age Range 11-89

“We’re team Motley Crew and we’ve been coming every year since inception. MDBF is a team FAVORITE!”

 **FURTHEST PADDLER**

10
YEAR
TEAMS

- BJ’s Sportshop
- Flying Ears
- Island City DBC
- Motley Crew
- Off the Edge

Thank you -
To Our Service Organizations

 **St. Germain PRIMETIMERS Inc.**
Lakeland Noon Rotary

Building What *Better Health* Looks Like

Together, we’ve empowered **\$1.9 million of life-saving healthcare** in the Northwoods over the last decade - one stroke at a time.

- 2016-2017**
Hospital Facility and Equipment Upgrades (Emergency, Rehab & Primary Care)
- 2018-2020**
Tick-Borne Illness Center: Diagnosis, Treatment, and Research
- 2022**
Cancer Patient Support in the Northwoods
- 2023**
End of Life Patient Care
Aspirus Seasons of Life Hospice
- 2024**
CT Scanner at Aspirus Eagle River Hospital and Perfusion Scan Software
- 2025**
Jenn’s Fund Compassionate Care (Aspirus Tick-Borne Illness Center)
- 2026**
UTV Ambulance
Read more on page 10

PADDLES UP FOR OFF ROAD CARE

Care Without Limits in the Northwoods



“If someone needs to be rescued from a trail, they are likely facing a critical situation,” says Charlie Kotke, Regional Manager, Aspirus MedEvac.

In the Northwoods, adventure often begins where the road ends. But when an emergency happens miles down a trail, reaching help isn’t always simple, and when minutes matter, getting care started quickly can save lives.

That’s why, with your help, we’re working to bring something our region has never had before: a UTV ambulance designed to bring advanced medical care directly to patients, wherever they are. This custom-built unit will function much like a traditional ambulance, but built for the backcountry. With its enclosed, heated patient care area, this unit allows EMTs and paramedics to care for patients out of the elements, even while in motion. In winter, that protection becomes

critical, as exposure can quickly lead to hypothermia. It allows first responders to begin warming patients right away, offering both comfort and a vital head start on treatment.

Outfitted with wheels in the warmer months and interchangeable snow tracks in the winter, the vehicle will be able to travel across trails, lakes, mud, and snow, ensuring year-round access in any condition. The goal, as Charlie shares, is “to make it seamless - getting to the patient quickly and moving them only once to a waiting ambulance or helicopter.”

Housed in Minocqua, but designed to serve the entire Northwoods region through coordinated dispatch, it will support multiple departments and communities. As Minocqua Fire Chief Rich Carani puts it simply, “If someone needs us, we’ll be there... it’s a resource we will share.”

As outdoor recreation continues to grow, so does the need for care that can keep up. With your support, we can build something that didn’t exist before, ensuring that no matter where you are, help can reach you.

What this means for our community

- ▶ **Faster response times** on trails, lakes, and remote areas
- ▶ **Ambulance-level care** provided at the patient’s side
- ▶ **Safer, more comfortable transport** with fewer patient transfers
- ▶ **Heated, enclosed care** critical in trauma situations
- ▶ **Year-round access** tracks or tires for any terrain
- ▶ **Shared regional resource**, available across communities through coordinated response



The UTV Ambulance will be custom built for our community needs using this and similar vehicles as inspiration.

A BEACON OF HOPE

Building Momentum in Eagle River

In the Northwoods, emergencies don’t wait. That’s why the Beacon of Hope campaign continues, raising funds to strengthen emergency services at Aspirus Eagle River Hospital and ensuring faster, safer response when every second counts. Thanks to the generosity of our community, momentum is already building and with your help, we can bring the full vision to life.



A Helipad Built for Every Season

A permanent, lit helipad will replace unsafe grass landings with reliable, year-round access, helping patients reach advanced care faster.



Safe Landings in All Weather

GPS-guided navigation will allow helicopters to land in lower-visibility conditions, reducing delays and canceled flights.



Building Our EMS Future

The EMS Sponsorship Program will train local EMTs to become paramedics, strengthening response times with caregivers who know this region.

Together, these efforts create a stronger, more responsive emergency system for the Eagle River area. With each gift, that system becomes more reliable, and when the next call for help comes, our hospitals will be ready.

Be a Beacon of Hope by donating to Aspirus Eagle River Hospital Greatest Needs at howardyoungfoundation.org.



In September 2017, Chris Marion suffered a catastrophic neck injury while barefoot water skiing in Eagle River – a rare C1 dislocation that left him instantly paralyzed and unable to breathe on his own.

“I couldn’t move anything but my eyes,”
Chris recalls.

He was airlifted on the Aspirus MedEvac helicopter to Aspirus Wausau Hospital, where a specialized surgical team was waiting. The flight saved nearly two hours of transport time - time his body simply didn’t have.

“That flight made all of the difference,” he says.
“There’s no question.”

Today, Chris is alive and thriving because that helicopter was there when he needed it most. And for others, that same lifeline can mean the difference between life and loss.

Support the UTV Ambulance by donating to the Special Gift: UTV Ambulance at howardyoungfoundation.org.



YOUR GIFTS IN ACTION

When Every Second Matters, You Made the Difference

Because of your generosity, what was once a vision is now part of everyday care.

A new 128-slice CT scanner is now fully installed at Aspirus Eagle River Hospital, and advanced CT perfusion (CTP) imaging is already being used at both Eagle River and Howard Young Medical Center.

With your support, and the combined matching contributions from Aspirus Health and Don and Abby Funk, this advancement is changing how care is delivered across our region. Together, these matches quadrupled the impact of every donor gift, transforming community generosity into a \$1.2 million advancement in imaging technology. Patients who once needed to travel for certain imaging can now be seen locally, with greater speed and precision.

This progress builds on an earlier investment from donors like you, who helped bring the first 128-slice CT technology to Howard Young Medical Center in 2016, setting a new standard for care in our region.

“It has improved efficiency immensely,” shares Rick Mai, Regional Director of Imaging Services. “What used to take

20 to 25 minutes, we can now complete in less than 10. That means patients are diagnosed and treated faster, and our teams can focus more on the patient.”

For stroke patients, the addition of perfusion imaging is especially meaningful. This technology allows care teams to see blood flow in the brain and make faster, more informed decisions when every second matters, helping determine whether brain tissue can be saved and guiding next steps in care. In those critical moments, clarity can shape not only outcomes, but the future that follows.

Because of you, our hospitals are equipped with technology that is improving care in real time and shaping the moments that matter most for patients and families.

Thank you for making it all possible.

To support our hospitals' greatest needs funds, visit howardyoungfoundation.org.

CARING FOR THE WHOLE PERSON

Expanding Treatment at the Tick-Borne Illness Center

At the Aspirus Tick-Borne Illness Center, care has always been about more than a diagnosis. Tick-borne illness often affects the body in complex, far-reaching ways, impacting energy, mobility, and daily life. That's why the Center is expanding its clinical capabilities to offer new therapies, giving patients access to more of the care they need in one place.

As a founding donor, Peter Nolan, President of the Daniel F. and Ada L. Rice Foundation, recently met with Dr. James Thatcher to hear an update on the Center's progress and growing patient needs. As the conversation turned to what comes next, Peter asked a simple but powerful question: “What do you need?”

That question opened the door to a thoughtful conversation about what patients need most. Dr. Thatcher, alongside Ashley Johnson, APNP, identified a set of therapies aligned with the International Lyme and Associated Diseases Society (ILADS) approach – treatments designed to complement antibiotics and supplements while offering more ways to support healing.

“We appreciate the need for the Tick-Borne Illness Center, which serves patients across the Midwest, and want to ensure providers have the tools they need and that access continues to grow,” Peter shared.

With this support, the Center will be able to introduce new options for care. Red light therapy provides a non-invasive way to reduce inflammation, support cellular repair, and ease chronic pain – symptoms many patients navigate every day. Point-of-service ultrasound enhances real-time assessment, allowing for more personalized, responsive care. New iPads in the waiting

room will guide patients through the first steps of their visit, while offering accessible education that helps them better understand their condition and feel more confident in their care journey.

Looking ahead, the Center is exploring the addition of a hyperbaric oxygen chamber and therapeutic sauna to further support healing.

Your continued passion for this Center allows the team to remain focused on what matters most, the human being. Every symptom, every story, every step toward healing matters.

Give the gift of healing to the Tick-Borne Illness Center at howardyoungfoundation.org.



The Tick-Borne Illness Center will introduce red light therapy to support patients' healing in a new way.

REACHING FURTHER

Supporting Families From the Very Start

For many families in the Northwoods, the journey to understanding a child’s autism diagnosis doesn’t begin with answers, it begins with questions. Questions that can take months, even years to navigate. And in a region with limited resources, families are often left to figure it out on their own.

That’s why the next step in our Autism Services efforts is so important.

Thanks to the generosity of donors, Lakeland STAR School/Academy has become a place where students are seen, supported, and celebrated. Now, we have the opportunity to reach families even earlier with Little STARS, a new Birth to 7 program designed to meet children and parents right where they are: at home.

For Howard Young Foundation board member Gregg Walker, this work is personal. He remembers what it felt like to search for answers, and how even the smallest guidance could make a difference.

“Sometimes it’s the littlest things,” he shares. “Understanding why your child won’t put on certain clothes, or how to help them through sensory challenges. When someone shows you what to do - simple things like using pictures or step-by-step visuals - it can change everything.”

At the heart of this new program is a dedicated School Autism Home & Parent Navigator, someone who will walk alongside families, helping them understand their child’s needs, navigate school systems, and bring consistency between home and classroom. This individual will help parents better understand their child’s diagnosis and navigate complex school

processes, including Individualized Education Programs (IEPs), translating them into clear, manageable steps.

They will work directly with families in their homes, coaching practical, evidence-based strategies that can be used in everyday routines - from getting dressed in the morning to managing transitions and communication challenges. By reinforcing at home what children are learning at school, the Navigator helps create consistency, reducing frustration and building confidence for both the child and their family.

“This new Birth to 7 Program represents exactly the kind of support our community has been needing,” shares Stephanie Cull, Lakeland STAR School/Academy Principal. “By connecting families, schools, and resources through a dedicated School Autism Home & Parent Navigator, we’re giving younger students with autism the strong, consistent foundation they deserve during their most important developmental years.”

Through this work, families will gain practical tools, clearer direction, and the confidence to support their child.

Because when support begins early, everything changes.

Children gain confidence. Parents gain clarity. And when those children eventually walk through the doors of STAR, they arrive not just ready to learn, but already on a path toward independence.

Support this program with a donation to the Autism Services Fund at howardyoungfoundation.org.



Learning Without Limits

Because of your generosity at the 2025 Lakeland STAR Golf Outing, the new Level 3 classroom at Lakeland STAR is already making a meaningful difference. Designed for students with more complex learning and sensory needs, a Level 3 classroom provides a highly supportive, structured environment where each student can learn at their own pace. In this thoughtfully designed space, students are building confidence and independence through real-life learning such as cooking, maintaining their classroom, and practicing daily routines guided by individualized job boards.

Functional academics like time and money skills are brought to life through hands-on experiences, while movement, music, and expressive arts create opportunities for growth and connection. Most importantly, students are beginning to see what’s possible for themselves—gaining skills, confidence, and a true sense of belonging.



A Path Forward

Union joined Lakeland STAR as a freshman after being homeschooled, needing support as he transitioned into a new environment. Through STAR’s individualized and therapeutic approach, he built the skills and confidence to succeed.

By his junior year, he was ready to fully transition to Lakeland Union High School, where he even became involved in student council - a powerful reminder that every student’s path is unique, and STAR helps them move forward at their own pace.



The Power of Philanthropy

The support of friends like you helps the Howard Young Foundation bring state-of-the-art care to Northwoods residents and visitors, support innovation and research, and strengthen our community through health and wellness. Your gift to the Foundation has the power to change the way we view healthcare at our rural hospitals – one patient at a time. Philanthropy or charitable giving plays a big part in healthcare all over the United States, but it's even more important in small communities like ours.

CUMULATIVE GIVING

It is with deep appreciation that we recognize and honor those listed here for their generous and caring cumulative lifetime giving to the Howard Young Foundation totaling \$2,500 or more through 2025. These generous donors have ensured that the health and wellness of all people in the communities we serve will continue for future generations.

Extraordinary Benefactor

\$1,000,000 or more

Don and Abby Funk
Marilyn and Bill Hopper
Jeffrey and Carrie Hoyer
Koller Family Foundation
– Frank and Betty Koller
Aldo and Dawn Madrigano
Trig and Tula Solberg
Ed Uihlein Family Foundation
Liz and Dick Uihlein
Anthony J. Vodnik IV and
Jean A. Vodnik
James and Bernadine Warning
Howard Young Trust

Exceptional Benefactor

\$500,000 to \$999,999

John F. and Eileen L.
Blumenschein Revocable Trust
Raymond and Marie
Goldbach Foundation, Inc.
Dave and Ginny Kavanaugh –
Kavanaugh Family Foundation
Doug and Jae McCoy
Michael and Judith McCoy
Robert D. Saffron
Seramur Family Foundation –
Joan and John Seramur
John and Carolyn Sonnentag
Volunteers of Aspirus
Eagle River Hospital
Robert and Teri Weirauch

Distinguished Benefactor

\$100,000 to \$499,999

Alan and Marti Albee
Ascension Lutheran Church
Ascension Wisconsin
Tom Beaudry
Noelle and David Brock
Toni and Ron Budelier
Robert W. and Yvonne Buhler
Brent and Jamie Cella
Albert W. Cherne Foundation
G. Richard and Nancy Cope
Alverin M. Cornell Foundation –
William and Wendy Brewer
Custom Caretaking &
Landscaping

Jonathan Dobbs and
Jacqueline Pruitt
Donald and Bona Edelmann
Fites Family Charitable Trust
Duane and Kathleen
Foulkes Foundation, Inc.
Joseph and Penny Francois
Michael and Nicole Gerdin
Scott and Linda Haag
Robert S. Hagge, Jr. and
Elke Hagge
Fred A. Hansen
Hawkeye Boat Sales –
Ryan Becker
Hooray Ranch
Bertrand Hopper
Memorial Foundation
IncredibleBank
IncredibleBank Foundation, Inc.
Claire and Tom Joyce, Jr.
Mary and Tom Joyce Family
Dave and Diane Klimisch
Lawrence and Geraldine Kutz
The Lakeland Times
Chef Crista Luedtke
John and Dee Dee Lund
Joe and Nancy Masterson
McCoy Group Inc.
Greg and Christie McCoy
Ministry Health Care, Inc.
Minocqua Country Club
Minocqua Lions Club
Northern Clearing
Northfork Fin & Filet –
Christie Terkelson and Joe Reed
Walter E. Olson Foundation
Tom and Susan Paulson
Frances and Anthony
Pogodzinski Foundation
Pritzker Foundation
Roger and Mary Pukall
John and Mary Raitt
Michael and Lynn Redenbaugh
Michael and Nancy Reinsdorf
Daniel F. and
Ada L. Rice Foundation
Roehl Transport
St. Matthias Thrift Shop
Jerome L. and
Joan M. Schnettler
Patti and William Schnettler
W.J. and Mary Kay Seifert
Roger R. and Susan B. Smith
Family Trust

Sonnentag Foundation Ltd.
Rebecca and
Timothy Sonnentag
Estate of Harry and
Dorothy Sterio
Mary E. Stolder, PhD
T.A. Solberg Company Inc./Trig's
Truck Country Freightliner
Kurt and Michelle Veldhuizen
Volunteers of Howard
Young Medical Center, LLC
Jay and Betty Vonachen
Donald and Nadine Wachholz
Jim Warmington
David Wenninger and
Gale Fisher
Woodruff Ace Hardware, Inc
Edward and Diane Zore

Outstanding Benefactor

\$50,000 to \$99,999

1889 Wealth Management
Gene and Molly Ahlborn
Kenneth Aldridge
Family Foundation
Dr. and Mrs. George Anast
Gil and Kate Arias
Daniel Armstrong
Aspirus
Tony Augustine Family
Ted and Patty Balistreri
William and Mary Beckley
Brian Behrens
Barbara and Charles Betz
Anthony and Monica Bodway
James and Christine Bollwinkle
William and Franciscus Bull
Robert and Carol Burreas
Debbie and Bob Cervenka
LW & SM Christiansen Trust
Community Presbyterian
Church of Lac du Flambeau
Byron Coon
Dairymen's Foundation Inc.
Darrin DiChristopher
James T. and Faye I. Evans
Jamey and Pamela Flannery
Vince and Mary Fonti
Gage Marine
Global Wealth Management –
Merrill Lynch
Golden Karat Jewelers, LLC
Michael and Wendy Graham

Robert and Alma Gray
Richard and Margo Gustafson
H.J. Hagge Foundation, Inc.
A. Woodson and Inga Hagge
Milton J. and Betty A. Henrichs
Brad and Susan Holmes
HT Glass & Mirror Center
William and Christine Hunter
Bill and Helen Iten
Family Endowment
Anne B. Jackson
Bob and Sherry Jacobi
Peter O. Johnson
Sharon and Jim Kellock
Graham and Lee King
Kreilkamp Trucking
Brian and Julie Krueger
Lake of the Torches
Resort and Casino
James and Leslie Miller
Jerrold Moisson
Patrick E Mulrooney
Gregory and Darcey Nicklaus
Bryan Olis
Dean Olson
David C. and Delta C. Orlowski
Otto Bremer Trust
P & S Investment Company, Inc.
Brad Pinchuk
Platinum – Wayne Briggs
Pukall Lumber Foundation, Inc.
Quality Collision Center
Redman Realty Group
The Ritchie Family
Ritchie Lakeland Oil Co., Inc.
Michael and Beverly Robinson
Chef Kevin Scharpf
Dr. Barry and Donah Seidel
Joseph and Alice Smith
Stengl Marine
Jinny and Jim Swartout –
The Osprey Foundation
United States Brass & Copper
Craig and Patti Vernon
Robert William and
Betty Poyer von Lutzow

Special Benefactor

\$25,000 to \$49,999

Patrick and Sandra Abraham
Ben and Molly Abroham
Randy and Diane Africano
Allen-Heath
Memorial Foundation
AP Adolfsen & Peterson, Inc.
Area 31
Richard and Sandra Austin
Keith and Kathleen Bane
Ryan Becker
Larry and Mary Ann Bender
Chris and Dana Bertagnoli
Scott and Erin Biertzer
Floyd L. Bishop Trust
The Boathouse
Robert E. Bragg
Charitable Remainder Trust
Mr. and Mrs. Oliver R. Burkart
Burton Industries
Joshua Clark
Davidson Family Foundation –
Willie G. and Nancy Davidson
Ben Dickey
Scott Doro
William E. Edstrom
Express Lube and
Service Center
Barbara Fabry
Faith Evangelical Free Church
First Merit Bank
DeDe and Jack Frost
David A. and
Velma F. Geraldson
Rick and Susie Gering
Jamie and Karen Geschke
Carl Gruber
Lee and Janet Guenther
Tommy Handrick
Dr. Gary A. and Glenda M. Haug
C.R. Hauser Family Foundation
James R. and Anne R. Hayes
Hazelhurst Lions Club
Heartland Express of Iowa
William W. and Carol J. Hiller
Holy Family Catholic Church
Jay and Cathy Huff
Thomas H. Jacob Foundation
Dr. Arthur J. and
Phyllis Jacobsen
Bob and Diane Jenkins
Jay Jepson
SC Johnson & Son, Inc.
and The Johnson Family
Scott and Kathy Kaufman
John Keibel and Joyce Beck
James L. Kemerling
Bernie and Penny Klotz

Matt and Tamra Kock
Sue and Bob Krohn
Kevin and Joanne Krueger
Allen and Nancy Labecki
Lakeland Powersports
Lakeland Rotary Noon Club
Lakeland State Bank
Raulf and Kristina LaMarche
Linse Bock Foundation
Marshfield Clinic –
Minocqua Center
Marthaler Chevrolet – Buick
McCoy Construction & Forestry
Patti and Jack McKeithan
Michael and Amy McLaughlin
Medical Staff of Howard
Young Medical Center
William and Iris Miller
Minocqua Brewing Company –
Dan White / Ice Cold Beer Fest
Minocqua Dance
William and Mary Morris
MTH Foundation
Francis Timothy
Mulrooney Trust
Estate of Elizabeth M. Munson
Jane Newman
Joanne R. Orr
Troy and Laurie Oungst
Pitlik and Wick
Mark and Cheryl Pitman
Col. J.N. Pritzker
Mr. and Mrs. Guido Rahr
Rands Trucking Inc.
Richard and
Antoinette Reinhart
Estate of Gordon Rinas
Hoyt Ritter
Russ and Ruth Russler
Estate of Edwin L. and
Harriet Schmidt
William J. & Barbara A. Schmidt
Family Foundation, Inc.
Schultz Building, Inc.
Seiferts Development
Corporation Trust
Dave and Cheryl Sell
Sewer Equipment –
John Wichmann
Brian Skaggs
John and Nancy Skoug
Smith Cabinet Works
Estate of Ella Stoebling
Richard and Helen Thomas
United Methodist
Church of the Pines
David and Dawn Veldhuizen
William B. and
Grace I. Vickerstaff
Jeffrey and Jillayne Waite
Walker Communications
Donald P. Walker
Winger Concrete Products, Inc.
John and Pam Winkelman
Wisconsin Public
Service Foundation

Major Benefactor

\$15,000 to \$24,999

Acklam Automotive
Service & Repair
Mary E. Ahern
Ahlborn Equipment
Adam and Anne Alesauskas
American Defense
Manufacturing
Gerald and Diane Auler
Denae Bachmeier
Beaudry Services
Richard Bennet
David and Jodi Bernard
Estate of Frances G. Bliss
Arthur A. and Elizabeth Bonnee
Boulder Junction Lions Club
Mildred E. Bruce
The Bruning Foundation
Gregory and Judith Budinger
Mitchell Bushman
Calvary Evangelical
Lutheran Church
Cardio Partners / Allied 100,
LLC / AED Superstore
Carol Cherwin Revocable Trust
Albert J. Colianni, Jr. and
Susan Colianni
Stephen and Lisa Coon
Leon and Alice DeBeyley Trust
Mary M. Dodge
Daniel and Margaret Donoghue
John Edelbrock and
Karen Dal Santo
Everest Builders of Minocqua
Lisette, Heinz and
Richard Fischer
Bill and Dorothy Fisher
Jane Flanigan
Walter Frautschi and
Pleasant Rowland
Al and Gladys E. Gongaware
Jim and Susan Gould
Greater Minocqua Area
Visitors Bureau
Daniel and Joellen Hagge
Kelly and Paul Hamerla
Dan and Julie Hartung
Heavy Equipment
Movers & Installations LLC
Heck Capital Advisors
Jeff Herkert
Estate of Elene M. Hess
Hirschbach Motor Lines –
Brad Pinchuk
Dr. and Mrs. Brent J. Holleran
Ryan, Karen, Ingrid and Ina Holt
Drs. Jim and Lorraine Houlihan
Janette Howard
Island Collision Center, Inc.
Louis and Catherine Iten
Jamey Flannery Trucking
JP Morgan Chase & Company
Brian and Beth Kief
Estate of Ernest E. Kiesow
John and Karen Kocovsky
Lac du Flambeau Lions Club
Lakeland Believers Church
James M. Lau, MD
Mr. and Mrs. Joseph Malloff
Manitowish Waters Lions Club
Elayne R. Marsan
Roger Maxwell
Bill and Linda McCabe
John R. and Susan B.
McCoy Family Foundation
Andy and Barbara McEachron
Jeanne L. McJoynt
Tom and Sherry Mohrhauser
Morgan Stanley
Dr. James E. and Diane Mullen
William and Emma Naumann
Nicolet National Bank
Adam Nonn
North Haven Resort –
Ryan Smith
James and Clare Okraszewski
Reid A. and Mabel Olson
Bill Orne
Ozinga Brothers Inc.
Martin Ozinga
James and Melissa Patterson
Jeremiah and Tracy Petrie
Dale and Loretta Pierson
Michael Portzen

Presentation
Design Group, LLC
Quality Paint & Body
Mark and Sue Rassier
Bob and Cindy Richards
Rock of Ages Lutheran Church
Guy and Katie Roe
Bill and Judy Roth
Runde Chevrolet
Theodore and Judith Russell
Tommy Ryden
St. Germain Lions Club
St. Matthias Episcopal Church
Hans Schaupt
Scheb Foundation
John and Julie Schmidt
Family Foundation
Security State Bank
Paul and Mary Seidl
Virginia and Daniel Sparkowski
Stigsell Creative
Jennifer and Tony Sweeney
Dr. Kevin and Lisa Tadych
Sabin "Tap" and Ruth Taplin
Tawani Charitable
Foundation, Inc.
James C. Thompson
John M. and Betty J. Tonne
Bertram J. and Leigh H. Tuckey
David V. Uihlein Foundation
John and Doris Ullrich
Until Better Times –
Larry K. Hanna
Walmart of Minocqua #2510
G. Lane and Linda Ware
Keith and Meg Warning
James Weil and Joni Kahn
Leigh and John Wilber
Willow Creek Press
Duane and Fern Winger
Wisconsin Crafthouse & Kitchen
Wisconsin Lyme Network
Randy Zoesch

Benefactor

\$2,500 to \$14,999

5 Star Marketing & Distribution
A-1 Excavating
Abbott Laboratories Fund
Carl and Suzanne Abendroth
Thomas and Cherie Abendroth
Action Floor Systems, LLC
Tim and Jenifer Adamovich
Louis Adams
Dr. James Agre and
Patti Soderberg
Marcie Ahmann
Air & Surface Transport
Nurses Association
Albee's Yacht Club Bar and Grill
Margaret and Leonard Aldridge
Janet Alesauskas
Alexander Charitable
Foundation
Christine Alfery
Kenneth Aift and
Lisa Michaelis-Aift
M. Jean Allen
Alliance Collection Agencies,
Inc. – Daniel O'Connell
American Family Insurance –
Angela C. Schuh
American Legion Auxiliary
Madsen Empey Post 89
American Legion Colin F.
Schultz Auxiliary Unit 318
American Legion Colin F.
Schultz Post No. 318
Nancy C. Ames
Amoco Foundation, Inc.
June M. Anderson

Karen E. Anderson
Roger and Avonna Lee
Anderson
Jeff and Sandy Anderson
Steve and Amy Anderson
Dr. Jerome and Debra Andres
Walter A. and Virginia L. Andrus
Royce and Kenneth Angus
Ann Marie's Fine Coffee & Tea
Barbara Annan, PhD
Pamela Anthony
Dr. Paul and Bette Appel
James and Tonna Appelgren
Arbor Vitae Homes
Arbor Vitae Woodruff
Lions Club
Russ and Hattie Armstrong
Bill and Laura Arvold
Associated Bank
Auto Select
Tom and Laurie Baker
Dr. Lloyd and Patricia Bakken
Fern Baldwin
John and Willa Jane Bals
Willard Bannister
Alvin Barden
James and Betty Barry
Bassett Jewelers –
Scot and Susan Bassett
Henry and Alberta Bateman
Dave Battermann
Eugene A. and Bettyann Battist
Baumann Home Improvements
Ed and Millie Baumbach
Trent Baumbach
Dick and Pat Bechtel
Janet and Warren Beck
Donald Becker
Dr. George E. and
Mary D. Becker
Jeff Becker
Gary and June Beier
Frances M. Beierle
Joseph Benbenek
John and Wendi Bennett
Robert and Mary Berard
Dennis and Pam Berdal
Jonathon Berg
Charles and Carol Berigan
Charles Bettag
BJ's Sportshop
Black Bear Bar –
Ryan and Jen Domaszek
Ray and Kathy Blackburn
Daniel and Nancy Bloch
John and Judith Bloom
Emma Rose and
Steve Boedecker
David and Cecelia Boger
Keith and Carol Bohlin
Audrey and Gregory Bohn
Bolger Funeral &
Cremation Services
Janet Bolger
Patrick E. Bolger
Ervin and Susan Bolks
Bonnie & Clyde Gangster Park
Books Are Fun
Books On The Move, LLC
Joan and Douglas Borcherdt
Carl F. Bostrom
W.E. Botthoff
A. Irene Boudreaux
Douglas E. Bouffiou
Boulder Junction
Volunteer Fire Department
Suzanne Bowman
BP Foundation
William and Ardis Brandt
Brandy Lake Amoco
Stephen and Camilla Brauer

Breakthru Beverage Wisconsin
Dennis and
Catherine Breitholtz
Jan and Sandia Brekke
Dr. G.H. and Ila Brister
Broadmouth Canyon Ranch
Dr. Rick and Cindy Brodhead
Sharon Brooks
Gerald and Christine Brost
Colleen and Martin Buehler
Carl and Gail Buehler
Abigail Bunce Morgan
Dorothy Buraczewski
Philip and Cheryl Burley
Dorcas H."Dee" Burlingame
Thomas G. and
Elizabeth M. Butler
Deborah Buttke
Gregory and Virginia Buzzell
Victor M. and Eula S. Cain
Pamela and Lawrence Caldwell
Bill and Patti Calhoun
Craig and Barbara Callies
Camp Agawak, Ltd.
Camp Timberlane
Campanile Center
for the Arts, Inc.
John S. and Trudy E. Campbell
Karen and Harland Carlson
Michael and Carmella Cartina
Joe and Christine Caz
CB Wealth
David and Marcy Cella
Brenda and Willis Chaulk
Chequamegon
Adventure Company
Michelle and Kim Chilsen
Cena P. Chinnock
Colleen Chisnell
Scott and Pam Cisney
Clack Foundation, Inc.
Richard and Susan Clack
Chris and Sheila Clough
CM Cares –
Church Mutual Insurance
Company Foundation
Michael and Leslie Cohen
Coldwell Banker
Mulleady Inc., Realtors
Sharon Coleman
JoAnn M. Coleman-Kiewert
Brian and Teresa Colianni
Marilyn and Albert Colianni
Community Church of
Boulder Junction
Community Foundation of
North Central Wisconsin
Computer Business Systems
Connexus Credit Union
Gerald Connors and
Lila Connors Grieger
The Continuum
Coon's Franklin Lodge
Coontail
Andrew and Heidi Coopman
Cornerstone
Custom Builders, Inc.
Steven and Lynda Cote
Scott Crawford
Dane and Lillian Crook
James and Gail Cummings
Michelle Czarneski
Carol Dahlquist
Roger S. Dahlquist
Dairymen's, Inc.
Dan and Diane Daniels
Dorothy J. Danielson
Gregory Danner
John and Randi Danner
Mark and Robbi Dascalos
Dave Marston Motors

Dean Distributing
Eugene and Janice Degner
John and Ann Dell
Design Solutions Screen
Printing – Todd Quamme
Timothy and Nancy Desmond
Walter and Londa Dewey
Thomas Dixon
DOCKshop
George and Louise Douma
Derrick Dralle
Brian and Katie Drerup
Drs. Matt and Anne Drewry
David and Nancy Drumm
Milton J. and Lillian Druse
Robert and Linda Dunbar
Dick and Joanie Dutrisac
Eilene Dybvad
Keith and Peg Dyre
Eagle River Area
Hospital Foundation
Eaglebrook Church
Kirk Ecklund
Tom and Terry Ellis
Ely Memorial Church
Renee Engman
John F. and Helen Erbach
Donald M. and Ruth N. Erickson
James and Barbara Erion
Margaret Erm
Charlie and Heather Evenhouse
Everest Custom Homes
D.C. Everest, Jr. and
Kathryn Everest
Excel Rehab & Spine Center
F & M Bank
Jerry and Julie Fahrner
Family Dentistry
Robert and Judith Farling
Dr. J.D. and Sonya Farrington
Rosalie and
Joseph Fashingbauer
Susan and William Fehlandt
Bill and Kristen Fenech
Family Foundation
Val and Denise Fernandez
Dr. James M. and
Joanne Finneran
First Weber Group Realtors
Darin and Beth Fischer
Nancy-Leigh Fisher
Russell and Christina Fisher
Dick and Sally Fitzpatrick
Jerry and Michele Flemma
Chris Flockhart
Flyin Finn Pub & Resort
Thomas and Lynda Foeckler
Richard and Gretchen Foltz
Stuart L. and Kathleen A. Foltz
Ford Foundation
Richard and Nancy Fossen
Dr. Race and Lynne Foster
Colleen and Michael Fraley
Kristin and John Frawley
Billy Fricke
Brian and Kimberly Fricke
William and Lisa Fricke
Erin Fritz
Lloyd A. Fry Foundation
Robert and Amy Fulford
H.R. Fuller
Furniture & Appliance Mart
Tom and Karen Gabert
Ronald Galowich
Chris and Michelle Gangemi
Richard and Bonnie Garrett
Gaslight Tavern
Jack Gaudion
Sam Gayhart
Budd H. and Mary E. Gebhardt

Otto and Carol Gebhardt
Sandra Brown Gellis &
Mark Gellis Fund
Thomas and Carol Gelwicks
Jack E. George
Gerdin Charitable Foundation
Russ and Ann Gerdin
Charitable Fund
Jeffrey and Dian Gerstner
Mike and Anne Marie Gibbons
Beverly and Richard Gieringer
John and Helen Gile
Deane A. and John D.
Gilliam Foundation
Justin and Kahla Gleiter
Michael and Cheryl Gleiter
Glenview State Bank
Joseph S. and Ruth Glickauf
Lori and Rick Goff
Michael and Lisa Goff
Golden Karat Jewelers -
Phillip Root
Kimbal and Jeanette Goluska
Jose Gonzalez-Magaz
Mary B. Good
Dr. Roger J. and
Betty J. Gorectke
Terrence and Christine Gorell
Deann and Douglas Gosnell
Frank Grabinski
James T. and Karen A. Grace
Gerald Graham
Sandra Grambow
Victor Grant
Green Bay Packers Foundation
Hollis J. and Virginia H. Griffin
Lonna Grosskopf
Jason Haen
Eric Hagge
Pat and Bill Hall
Hallman Lindsay Paints, Inc.
Virginia Hamm Van Proioen
Angela Hanhardt
John L. and Mary J. Hanson
Harrold, Scrobell & Danner, S.C.
Gregory Harrold
Donald E. and Frances I. Hart
Edwin L. and Norma E. Hart
Hartford Heating and
Air Conditioning
Holly P. Hass
Wilhelmina Hauser Trust
William and Sandra Hayes
Hazelhurst Pub
Headwaters State Bank
HealthEquity
Community Foundation
Lawrence and Andrea Heath
William G. and Dawn M. Hecht
David Heck
Ken Heck
Richard and Janice Heimerl
Karen and Arthur Helgerson
Warren and Linda Henschel
Nick Herbst
Amy and Dennis Herman
Laurie Herzog-Draeger
in memory of Brian Herzog
Candy and John Hickey
Kathryn Higgason
John and Dana Hilbert
Bill and Venus Hilgart
Dr. Kim and Mary L. Hilliker
Frederick J. Hills
Faye and Robert Hoehne
Judy Hoerr
Hogan & Melms, LLP
Garrett and Constance Holling
Karen Ann Holway

Home Xpressions
Minocqua, Inc.
John and Nancy Hoppe
David and Linda Horne
Hospice Pharmacia
Ran and Elaine Hoth
Sally Hough Family Foundation
Howard Young Health Care Inc.
Howard Young Medical
Center Employees
Howling Dog Saloon, Inc.
Gloria F. Hudek
Jon and Kris Hunt
Hunter Family Foundation
Tom and Tsch Hunter
John Huppert
Hurckes Family Foundation
Richard and Mary Hurckes
Steve Hutchins
Frank B. Hutchinson
Dr. Richard E. Immler and
Pamela J. Thul-Immler
Infinium Spirits
Island City Dry
Dorothy Jelly
Phil and Mickey Jensen
JJ's Acres
Diane and Timothy Johns
Carl R. Johnson, Jr. and
Jeanne Johnson
Daniel C. and Leslie S. Johnson
Richard and Sharon Johnson
Richard F. Johnson
Richard P. and Barbara Johnson
Hulburd Johnston
Richard A. and Kathleen J. Jolin
Donald and Susan Jones
Laurence R. Jones
Ruth and John Joswiak
Angie and John Joyce
Robyn and J.D. Joyce
Juedes Molinaro
Family Foundation
John C. Jung
Steven Justin and
Elisa Farmilant
Chris and Sarah Justmann
Barbara and Roger Kamper
Adam Karas, DPM
Phillip and Deborah Karow
Robert J. and
Halcyon Kasmarek
Ellen D. Kasper
Gina Kasper
William and Joann Katzman
Joseph D. Keenan, Jr.
Lee Kelly
David Kemnitz
Robert M. Kendall
Donald Kenney
Mrs. Jean Keuer
Kilian Management -
McDonald's
Tom and Lynne Kilian
Agnes King
Debra Kivi-Tupper and
Robert Tupper
Wayne and Bonnie Klappa
Judy and Robert Klauer
Wallis E. and Sophia Kleist
Jeanette D. Klemme
Ronald and Mariann Klisanac
Matt Kluesner
David and Susan Knapstein
Knights of Columbus
Council #7827
Shirley M. Knitt
Steven and Sherri Knoll
Robert and Carol Kolb
Gregory C. and Virginia M. Kopp

Kortendick Hardware, Inc.
Donald S. Koskinen
Charlie Kotke
Susan and Gerald Koudelka
Dr. John and Linda Kozisek
Krause Milling Company
R.W. Kritzer
Daniel Krivos
Howard Young Medical
Center Employees
Ronald L. and
Barbara A. Kroeger
Kenneth and Mary Krueger
Christie and William Krugler
Larry Krull
Thomas and Carol Kuecker
Lee H. and Pearl D. Kulp
Richard and
Marlene Kurszewski
Aaron and Faith Kurth
DuWayne and Janet Laak
Lac du Flambeau
Ambulance/Fire Department
Lac du Flambeau Women's Club
Ladies of Columbus
of Woodruff
Dorothy Jelly
Pat McNamee
Lloyd A. and Patricia S. Lafini
Diane and Timothy Johns
Carl R. Johnson, Jr. and
Jeanne Johnson
Daniel C. and Leslie S. Johnson
Richard and Sharon Johnson
Richard F. Johnson
Richard P. and Barbara Johnson
Hulburd Johnston
Richard A. and Kathleen J. Jolin
Donald and Susan Jones
Laurence R. Jones
Ruth and John Joswiak
Angie and John Joyce
Robyn and J.D. Joyce
Juedes Molinaro
Family Foundation
John C. Jung
Steven Justin and
Elisa Farmilant
Chris and Sarah Justmann
Barbara and Roger Kamper
Adam Karas, DPM
Phillip and Deborah Karow
Robert J. and
Halcyon Kasmarek
Ellen D. Kasper
Gina Kasper
William and Joann Katzman
Joseph D. Keenan, Jr.
Lee Kelly
David Kemnitz
Robert M. Kendall
Donald Kenney
Mrs. Jean Keuer
Kilian Management -
McDonald's
Tom and Lynne Kilian
Agnes King
Debra Kivi-Tupper and
Robert Tupper
Wayne and Bonnie Klappa
Judy and Robert Klauer
Wallis E. and Sophia Kleist
Jeanette D. Klemme
Ronald and Mariann Klisanac
Matt Kluesner
David and Susan Knapstein
Knights of Columbus
Council #7827
Shirley M. Knitt
Steven and Sherri Knoll
Robert and Carol Kolb
Gregory C. and Virginia M. Kopp

Manitowish Waters
Lioness Club
Manson Insurance
Allan and Mary Manteuffel
TJ and Lori Marini
Ralph and Martha Marrinson
James and Christine Martin
Ryan Martin
Chester and Mildred Matus
May Family Foundation, Inc.
Helen W. and George W. May
Estate of Theckla L. May
Mary and James McCann
John W. McConachie
McCoy Freightliner
Bradley and Gloria McCoy
Mary McCoy
Robert and Jeanann McCoy
Grace A. McCullagh
David and Anita McDonald
John and Barbara McFarland
Mary McFerrin
Leslie McGinnis
Mark and C'Ann McMillin
Donald and Jane McMurray
Pat McNamee
Dr. and Mrs. William Melms
Steve Menzies
Mercer Area Ambulance
and Rescue
Carolyn and Steven Metz
Ted A. Meyer
F.A. Meyers
Thomas and Susan Meyers
Charles and Patricia Michels
Jeanne and Louis Milewski
Scott and Phyllis Miller
Min-Aqua Bats
Water Ski Club Inc.
Minocqua Furniture
Minocqua Gun Club
Minocqua Pest Control, LLC
Minocqua Yacht Club
Sandra Mohelnitzky
Mike and Roxanne Molitor
William and Anne Moller
Todd and Jacqui (RN) Monge
Linda Monson
Marjorie R. Moon Living Trust
Moracco Supper Club
Ben and Carrie Morris
Manson Morris
Glenn and Arlene Morrison
MP Systems
Carl and Vivian Mueller
Frederic and Beth Mueller
Liesan Pinzl Kessinger
Dental LLC
Patricia and Steven Lindloff
John and Jane Lipp
Karen and Brant Loichinger
Dean and Cheryl Long
Stephen and Jeri Lose
Lubrizol Corporation
LUMW - Liz Uihlein Foundation
John Lynch
M & I Bank - Eagle River,
St. Germain and Three Lakes
M & I Bank - Woodruff
Walter B. and
Catherine M. Maas
Madel Olivares
Photography & Designs
Kathleen and Michael Mader
Bob and Julie Madsen
John and Laura Magstadt
Will and Barb Maines
Manitowish Waters
Community Church
Manitowish Waters
Fire Company, Inc.

Nimsgern Funeral &
Cremation Services
Nimsgern Steel Corporation
Chip and Shari Nimsgern
James and Geryl Nimsger
William and Joyce Nimsger
Bruce and Lori Nixon
Northern Lights
Harley Davidson
Northern Lights HOG
Chapter #5598
Northern Wisconsin Bone &
Joint Center, Ltd.
Northwoods Association
of Realtors
Northwoods Foods, Inc.
Northwoods United Way
Northwoods Women's Club
Norwood Pines Supper Club
Andrew and
Amanda Novacheck
NRG Media
Jon Oaks
Todd Oberg
Mary Jo Oberpriller
Anne Oelrich
Susan and Nick Ohlsson
Robert and Mary G. O'Leary
Mark and Patricia Olinyk
Craig Olson
Daniel and Sandra Olvey
Margo and Alan Oppenheim
Andrew Orians and
Victoria Martin
Ort & Sons Trucking
Oscar J. Boldt
Construction Company
Peter and Susan Otis
Our Lady Queen of Peace
Kenneth and Judith Ozinga
Clara Paquette Family Trust
Park City Credit Union
Christopher and Nancy Patrick
Peace Evangelical
Lutheran Church
Mr. and Mrs. Emmett J. Peck
Peoples State Bank - Minocqua
Gary Peters Family Foundation
Kenneth and Sue Peters
Dr. Stephen R. and
Linda S. Peters
Dr. Thomas and
Sharon Petersen
Dr. Christopher and
Kristen Pfaller
Carolyn Pfeiffer
Raymond and Nancy Pilmonas
Pine Shadows Daybreak
William and Isabelle Pirie
Plum Lake Ambulance Service
Plum Lake Lions Club
Brant and Lois Poggemann
The Pointe Resort & Club
J.E. Pottharst
Ralph and Pam Pound
Precision Pipeline
Robert and Katherine Prentice

Matthew and Kelly Prescott
Diane M. Price and
John McCaughn
Shawn and Gwen Pritchard
William and Monica Pritchard
Project Grace Foundation
David Protz
Elizabeth Purtell
John and Julie Puscheck
Mitch Putnam
Steven R. Quackenbush, M.D.
The Reverend William Radant
Bill and Maureen Radtke
Dr. William E. and
Frances E. Raduege
Estate of Bernice B. Raedeke
David and Rebecca Rathkamp
Gerald Rau
Marshall Reckard
William and Sheila Reckmeyer
Redman Gelinis Eye Care
Dr. Kirby and Anne Redman
Brian P. and Sandra K. Redmond
Kathy and Andrew Regenfuss
James Reichert
Dennis and Christine Reilly
Resonant Capital Advisors
Reuland's Catering, LLC
Rhineland GM Auto Center
Richard and Kay Rhyner
Ed G. Richardson
Thomas R. and
Patricia L. Richardson
Dunnie and Roselynn Richter
Earl E. Richter
Thomas Riemer
Ritchie's Wave Rentals
Ted and Carolyn Ritter
River View Construction, Inc
Dr. and Mrs. Richard Roach
Glyn Roberts
Todd and Shanna Roberts
Capt. James Robinson
Jerry Robish
Miriam Roe
A. Charles and Darlene Roland
Steve Rooney
Richard Rosenthal
Gary and Mary Rosholt
Angela Rothmeier
Matthew Rottman
Dr. Paul and Tess Rowland
Arthur E. Rubloff
John H. Runkel
Dr. John R. and Jane B. Russell
James and Cynthia Russler
Robert Rynders
S&S Investments of
Wisconsin, LLC
St. Albert's Parish
St. Anthony of Padua
Catholic Church
St. Anthony's Catholic Women
St. Croix Rods
St. Germain Community Church
St. Germain Lioness Club

St. Germain Primetimers
St. Germain Women's
Service Club
The Samuels Group, Inc.
Glenn C. Sansburn
Danny and Deb Sargent
Michael J. and Joan S. Sasse
Save More Food Markets
Sayner Star Lake Lions Club
Philip and Elizabeth Schaack
Michael and Susanne Schaars
Buck Schaeffel
John Schaupp
Julius and Joann Scheffler
Dr. Charles A. and Joan Schell
Robert and Dorothy Schildt
Todd and Jennifer Schmitz
Dawn and Joseph Schneider
Kurt Schnettler
Kenneth and Pamela Schoville
Mark and Tammy Schuler
Nancy and Thomas Schuller
Eileen and Thomas Schultz
Lee P. Schultz
William and
Barbara Schweisheimer
Alice M. Scidmore
Linda R. Seale, MD
Glenn K. Seidenfeld, Jr.
Mary Selander
Paul and Suzanne Shain
Shepherd of the Lakes
Lutheran Church
James and Kathleen Shepherd
Kenneth and Mary Lou Shepski
Brian and Margo Sherrin
Colleen and Joel Skjerven
Josephine V. Slidell
Raymond J. Sloan, MD
Slumberland Furniture
Brad Smith
Craig Smith
Dr. Robert L. and Carolyn Smith
Judy and Mike Smolarek
Jane Somers
Frederick B. and
Susan T. Sontag
Dr. Robert and
Kathryn Sookochoff
Mr. and Mrs. Donald Sorenson
Southwest Securities
Georgie Southwick
Dr. Harry W. and
Lorraine H. Southwick
Dr. John and Elaine Spellmeyer
Spirit 2 Tribute LLC
Teresa Sprecher
Lorna and Robert Springate
SSM International Finance
Standard Oil Foundation
Starbucks
State Farm Insurance
Companies - Craig
Farrell Agency
Frederick and Patti Staugh
Rick Steckel

Mike Steele
William and Diane Steele
David and Jean Steinberger
Carol Steiner
Jim Steiner
Stenz Family
Douglas and Karen Stewart
Donald J. Stifler
James and Joyce Stocker
Steven and Mary Stolder
Tom Stoll
Dave Stout
Phillip and Nancy Strand
Beverly Y. Strauss
Robert E. and Jeanne Stuart
Bradley and Linda Subler
Judith A. Sudbury
Don and Paula Suominen
Henry Szymanski
George and Linda Tanner
Phil Taplin
Darrell and Nancy Tarnow
Dr. MaryJane Taylor
Erwin and Nancy Teichmiller
Jack R. and Janet F. Tenge
Howard and Mary Tepp
Thermal Design, Inc.
Thielmann Group
Ray Thiesen
Dr. Michael and
Janice Thimmesch
Thirsty Whale of Minocqua, Inc.
Matthew A. Thomas, MD
Brian and Brenda Thompson
Jonell C. Thompson
Howard E. and
Judith M. Thompson
Thomas and
Barbara Thompson
Terence and Marjorie Thor
James and Carla Tiefenthaler
Timber Ridge Golf & Tennis Club
Barbara and Gerald Timm
Angelene and
Scott Timmerman
Tiziani Golf Car Corporation
Dennis and Barbara Tiziani
Judy and Don Tomaszewski
Town of Conover
Trinity Evangelical
Lutheran Church and School
Deb and John Tritt
Trout Lake Enterprises
Trout Lake Ladies League
United Structures
United Wisconsin Services, Inc.
United Women in Faith
US Bank
Glenn and Mary Lou Utt
Valley National Bank
Patricia Van Acker
R. Richard and
Elizabeth Van Horne
Darlene Van Lishout
Deborah Van Swol
Mrs. Garland Vandermede

Nancy R. Ver Kuilen
Colton Vernon
Veteran's Truck Line
Veterans Foreign Wars -
VFW Post 7898
Kathy and Dennis Viergutz
Vietnam Veterans of
America Chapter 256
Vilas Title Service, Inc.
Estate of Edward H. Voegeli
Matt and Lesley Vonachen
Brian Wagner and
Karissa Livingston
Gary and Karen Walbruck
Gregg Walker
Marilyn and Stephen Walker
Candace Ware
Kevin and Marty Warning
The Waters of Minocqua
James Watson
Jim and Myrna Weikgenant
Jeff Weis
Dr. Matthias and Kristen Weiss
Michael and Mary Wendell
Randy Wendt
Michael and Marian Wenman
Becky and John Westover
Deborah L. Wexler, MD and
Michael L. Mann
James and Maureen Wiesner
Michael Wilhelm
Dr. E.B. Williams
Dennis and Ann Wilm
Cate Wilson, R.N.
Winchester Ambulance
Department
Winchester Lions Club
Robert and Sandra Winter
Wipfli, Ullrich & Company
Brad and Jody Wipperfurth
Wisconsin Brewers Guild
Wisconsin Masonic Foundation
Wisconsin Public Radio (WPR)
Wisconsin Tavern
League Foundation, Inc.
WJFW-12
Woodruff Appliance & TV
The Woods Cafe & Bakery
Jeffrey Woodward
Benjamin O. and
Cecile A. Wright
Terry and Noma Wright
John and Linda Wrobel
WXPR 91.7 FM Public Radio
Stanley and Janet Yaucher
Luke and Jill Yelton
William F. and Jere J. Yeschek
William and Sue Yeschek
Yeti's Drive In - Sara and
Thomas Cleereman
Your Boat Club
Patricia J. and Richard A. Zach
Ronald and Kathleen Zaffrann
Daniel and Dana Zagzebski
Nancy F. Zalewski
John and Edith Zink

BONHOMIE CLUB

2025 membership in the Bonhomie “Good Friend” Club signifies strong interest in the present needs and future welfare of our hospitals. Benefactors who choose to support our hospitals and Seasons of Life Hospice House with an annual gift of \$100 or more are listed on the prominent donor recognition wall at Howard Young Medical Center or Aspirus Eagle River Hospital.

Red Oak**\$1,000 or more**

1889 Wealth Management Group
5 Star Marketing & Distribution
Acklam Automotive Service & Repair
Ahlborn Equipment
Gene and Molly Ahlborn
Alan and Marti Albee
Kenneth Aldridge Family Foundation
Adam and Anne Alesauskas
Janet Alesauskas
American Family Insurance – Angela C. Schuh
Area 31
Gil and Kate Arias
Daniel Armstrong
Aspirus
Denae Bachmeier
Tom and Laurie Baker
Beaudry Services
Tom Beaudry
Warren Beck
Brian Behrens
David and Jodi Bernard
Chris and Dana Bertagnoli
Barbara Betz
Scott and Erin Biertzer
Ann Bihrlé and Patrick Waite
Glenn and Gwen Bilek
The Boathouse
Tony Bodway
Boulder Junction Lions Club
Stephen and Camilla Brauer
Gerald and Christine Brost
Robert and Carol Burress
Mitchell Bushman
Craig Callies
Cardio Partners
LW & SM Christiansen Trust
Scott and Pam Cisney
Richard and Susan Clack
Joshua Clark
Coontail
Stephen and Lisa Coon
Cornerstone Custom Builders, Inc.
John and Janet Craychee
Custom Caretaking & Landscaping
Dairymen’s Foundation Inc.
Christy and Marc Damon
Walter and Londa Dewey
Darrin DiChristopher
Thomas Dixon
Jonathan Dobbs and Jacqueline Pruitt
Scott Doro
Derrick Dralle
Brian and Katie Drerup
Express Lube and Service Center
Barbara Fabry
Jerry and Julie Fahrner
Val and Denise Fernandez
Russell and Christina Fisher
Fites Family Charitable Trust

Thomas and Lynda Foeckler
Duane and Kathleen Foulkes Foundation, Inc.
Walter Frautschi and Pleasant Rowland
H.R. Fuller
Gage Marine
Benjamin Gau
Jack Gaudion
Sam Gayhart
Otto and Carol Gebhardt
Sandra Brown Gellis & Mark Gellis Fund
Rick and Susie Gering
Beverly and Richard Gieringer
John and Helen Gile
Golden Karat Jewelers, LLC
Denise Goldsworthy
Kimbal and Jeanette Goluska
Jose Gonzalez–Magaz
Deann and Douglas Gosnell
Richard and Margo Gustafson
Kelly and Paul Hamerla
Angela Hanhardt
Dan and Julie Hartung
Holly P. Hass
Glenda M. Haug
Hazelhurst Pub
Headwaters State Bank
Heck Capital Advisors
David Heck
Warren and Linda Henschel
William W. and Carol J. Hiller
Bertrand Hopper Memorial Foundation
Marilyn and Bill Hopper
Ran and Elaine Hoth
Janette Howard
Jeffrey and Carrie Hoyer
HT Glass & Mirror Center
Hurckes Family Foundation
IncredibleBank
IncredibleBank Foundation, Inc.
Indy Surviveoars Dragon Boat Racing
Bill and Helen Iten
Family Endowment
Leslie S. Johnson
Claire and Tom Joyce, Jr.
JP Morgan Chase & Company
Juedes Molinaro Family Foundation
Scott and Kathy Kaufman
Dave and Ginny Kavanaugh – Kavanaugh Family Foundation
James L. Kemerling
Lee King
Dave and Diane Klimisch
Matt and Tamra Kock
Koller Family Foundation – Frank and Betty Koller
Charlie Kotke
Kreilkamp Trucking
Allen and Nancy Labecki
Lakeland Fitness and Golf
The Lakeland Times
Lakeland Rotary Noon Club
James Lau, MD

Jill C. Lemke
Richard and Beth Lepping
John L. and Karen E. Lewis
Susan K. Loos
Lubrizol Corporation
LUMW – Liz Uihlein Foundation
Aldo and Dawn Madrigano
Mr. and Mrs. Joseph Mallof
TJ and Lori Marini
Ralph and Martha Marrinson
Marthaler Chevrolet – Buick
Ryan Martin
Joe and Nancy Masterson
Bradley and Gloria McCoy
David and Anita McDonald
Andy McEachron
Mary McFerrin
Pat McNamee
James and Leslie Miller
Minocqua Country Club
Minocqua Lions Club
Linda Monson
Moracco Supper Club
Dr. James and Diane Mullen
Alan Murphy
Jason Nafe
Susan and Davis Nelsen
Nicolet National Bank
James and GERALYN NIMSGERN
Northern Clearing
Northfork Fin & Filet – Christie Terkelson and Joe Reed
Andrew and Amanda Novacheck
NRG Media
Todd Oberg
Mark and Patricia Olynyk
Dean Olson
Andrew Orians and Victoria Martin
Bill Orne
Joanne R. Orr
Peter and Susan Otis
James and Melissa Patterson
Tom and Susan Paulson
Dale and Loretta Pierson
Mark and Cheryl Pitman
Robert and Katherine Prentice
Project Grace Foundation
Pukall Lumber Foundation, Inc.
Rands Trucking Inc.
Mark and Georgianne Rasmussen
Redman Realty Group
Richard Reinhart
Michael and Nancy Reinsdorf
Resonant Capital Advisors
Daniel F. and Ada L. Rice Foundation
The Ritchie Family
River View Construction, Inc
Capt. James Robinson
Michael and Beverly Robinson
Roehl Transport
Bill and Judy Roth
Dr. Paul and Tess Rowland
James and Cynthia Russler

Ruth Russler
Tommy Ryden
S&S Investments of Wisconsin, LLC
Robert D. Saffron
St. Germain Community Church
St. Germain Lions Club
St. Germain Primetimers
Danny and Deb Sargent
Steven and Pamela Scheible
Thomas Schmidtke
Mark and Tammy Schuler
Schultz Building, Inc.
John and Judy Scully
Dr. Barry and Donah Seidel
Paul and Mary Seidl
Sewer Equipment – John Wichmann
Colleen and Joel Skjerven
John and Nancy Skoug
Brad Smith
T.A. Solberg Company Inc./Trig’s
Trig and Tula Solberg
Jane Somers
Sonnentag Foundation Ltd.
John and Carolyn Sonnentag
Rebecca and Timothy Sonnentag
Lorna Springate
Stigsell Creative
Mary E. Stolder, PhD
Tom Stoll
Jennifer and Tony Sweeney
James and Melissa Thatcher
Richard and Helen Thomas
Tristate Truck Equipment
Deb and John Tritt
Ed Uihlein Family Foundation
United Structures
David and Dawn Veldhuizen
Kurt and Michelle Veldhuizen
Volunteers of Aspirus Eagle River Hospital
Matt and Lesley Vonachen
Nadine Wachholz
Jeffrey and Jillayne Waite
Linda Ware
James and Bernadine Warning
Keith and Meg Warning
James Weil and Joni Kahn
Jeff Weis
Deborah L. Wexler, MD and Michael L. Mann
Leigh and John Wilber
John and Pam Winkelman
Robert and Sandra Winter
Wisco Crafthouse & Kitchen
Wisconsin Public Radio (WPR)
WJFW–12
WXPR 91.7 FM Public Radio
Your Boat Club
Daniel and Dana Zagzebski

Sugar Maple**\$500 to \$999**

Andrew Acklam

RECOGNITION LEVELS

Red Oak: \$1,000 or more annually

Sugar Maple: \$500 or more annually

White Pine: \$250 or more annually

White Cedar: \$150 or more annually

Aspen: \$100 or more annually

Action Floor Systems, LLC
Kenneth Alft and Lisa Michaelis–Alft
Steve and Amy Anderson
Royce and Kenneth Angus
Associated Bank
Bassett Jewelers – Scot and Susan Bassett
Best Western Concord Inn
Dennis Biertzer
Richard and Melissa Biller
William and Marie Bitters
John and Judith Bloom
William and Ardis Brandt
Jerome and Laurie Bybee
Grant and Carol Callow
Campanile Center for the Arts
Karen and Harland Carlson
Chequamegon Adventure Company
Michelle and Kim Chilsen
Marilyn A. Colianni
David and Shari Crabtree
Nan Curtis
Michelle Czarnecki
Dean Distributing
Design Solutions Screen Printing – Todd Quamme
Robert and Linda Dunbar
Eilene Dybvad
Renee Engman
Butch Fencil
Mark Flaherty
Tom Stoll
Colleen and Michael Fraley
Billy Fricke
Richard and Kimberly Fricke
Mary Fried
Erin Fritz
Tom and Karen Gabert
William Garvin
Beth and Garth Gilster
Nancy Harvey
Jim and Sharon Hearnis
Mary Herrick
Laurie Herzog–Draeger
Larry and Kathryn Holmes
Jay and Cathy Huff
Steve Hutchins
James and
Katherine Kavemeier
Debra Kivi–Tupper and Robert Tupper
Knotty Barrel
Michael and Kathleen Kreilkamp
Daniel Krivos
Christie and William Krugler
Lake of the Torches Resort and Casino
Judith Lakota
Sandra Lelonek
Liesen Pinzl Kessinger Dental
Lost Wave
Ruth Manternach
James and Jeanene Meisser
Lisa Mellen
Jeanne and Louis Milewski

Minocqua Pest Control, LLC
Lance Moonen
John Morache
Manson Morris
Lori and Mike Murphy
Jill and David Natzke
John and Jonel Near
Chip and Shari Nimgern
Northern Waters Distillery LLC
Kenneth and Sue Peters
Ross Peterson
Pink Paddling Power
Col. J.N. Pritzker
Patricia Pritzl and Dick Simon
Elizabeth Purtell
William and Sheila Reckmeyer
Dr. Kirby and Anne Redman
Christine and Dennis Reilly
Guy and Katie Roe
Amy Rolph
Kari Rydalch
Save More Food Markets
Steven Sazama
Dawn and Joseph Schneider
Dave and Cheryl Sell
Josh Siehoff
Sally Smith
Judy and Mike Smolarek
Bill Southwick
Georgie Southwick
Teresa Sprecher
Mike and Rebecca Stawicki
Samantha Steinberg
Robert Stoehr
Stoney Creek Home and Garden Center
Tahoe Lynx Golf Course
Darrell and Nancy Tarnow
Christie Terkelson and Joe Reed
Teri Theiler
Thomas and Barbara Thompson
Wendy Thompson
Walter and Katherine Toben
Julaine Tracy
Trout Lake Ladies League
Jesse Turner
Shawn Umland
Daniel Waite
Kevin and Marty Warning
Waste Management
Nic Weight
Duane and Fern Winger
John and Linda Wrobel
Randy Zoesch
Wayne and CeCelia Zorn

White Pine**\$250 to \$499**

Tim and Jenifer Adamovich
Gay Adams
Mary E. Ahern
M. Jean Allen
American Legion Colin F. Schultz Auxiliary Unit 318
Eric Anderson
Carne Andrews
Andy and Jen Arians
Anice Arvidson
Joseph Benbenek
Jim and Kathleen Bennett
Dennis and Jessica Bland
Bohland Business Solutions – Jeff & Terri Boh
Claire Boles and William Ruland
Breakthru Beverage Wisconsin
Mary and Karen Wiscoe
Thomas and Lori Brophy
David Christensen and Sharon Krause

John and Nina Clark
Dairymen’s, Inc.
Caren DeHart
Keith and Peg Dyre
Rachel Eggebrecht
Travis Feller
Mike and Heidi Fink
Dr. Race and Lynne Foster
Joseph and Penny Francois
Rick and Lori Goff
Laura Gray
Robert and Jill Hayssen
Jim and Kathy Holperin
Stephanie Jilek
JJ’s Acres
Larry and Joanne Jones
Gina Kasper
Mariann Klisanac
Kortendick Hardware, Inc.
Jeffrey and Margaret Kresch
Timothy Lerch
Dana Liotta
Gerald and Julie Litvinoff
Lucy Lorenz
Cookie Lough
Manitowish Waters Lions Club
Allan and Mary Manteuffel
Mary and James McCann
Gami Miller and Steve Gilbert
Geri Miller and Howard Ellis
Walter and Louise Monroe
Moondeer and Friends Gallery
Nimsgern Funeral & Cremation Services
Northwood Golf Club
Thomas O. Olson
Patrick K. and Patricia F. Pergolski Family
Jeffrey Perrigo
Cheryl and Ross Pettit
Dr. Molly Pilarski
Doug and Becky Pinney
Plum Lake Lions Club
Frederick and Marilyn Polaniecki
Bill and Maureen Radtke
David and Rebecca Rathkamp
Kathy and Andy Regenfuss
Cathy Reif
Theodore and Judith Russell
St. Germain Women’s Service Club
Genevieve Salvinski
Daniel and Karen Sauer
Terra and David Schmoeger
Rod Schroedel
Elizabeth Schussler and Richard Foral
Deborah Seifert
Mary Kay Seifert
Cindy Shaw
Kenneth Shepski
Sisters Saloon
Bruce and Janine Smith
Gerald and Pamela Smith
Catherine Spencer
State Farm Insurance
Companies – Craig Farrell Agency
Barbara Stuppy
Pam Sydow
Jack and Judy Terreberry
Lynn and Cynthia Trapp
True North Yoga Studio
Tom and Carol Vandenbusch
Nancy R. Ver Kuilen
Gary and Karen Walbruck
Richard and Gail Weiss
Woodruff Ace Hardware, Inc
Terry and Noma Wright

White Cedar**\$150 to \$249**

Ameriprise Financial – Meghan McFarland Anderson
Pamela Anthony
Kathy Asselborn
Laurence and Mary Ann Baker
Alan and Judy Barry
Richard Bergman
Terrence and Susan Boyle
Pat Buenz
Rich and Carol Carani
CMT Electric – Mike Tschida
Joan Condon
Erin Dallas
John and Beverly Damos
The Reverend Aaron Devett
Daniel and Margaret Donoghue
Jean Duensing
Richard and Nancy Fossen
Sharon Gabinski
Janis and Roger Gerds
Beverly Ginnow
Terry Gromer
Bernadine Grundy
Edgar F. and Julie G. Hagnauer
James Harper and Gloria Tomasek–Harper
Anne Heggelund
James and Paula Holden
Alana Holt
John and Joan Horan
Houlihan Law Firm
Wendy K. and Todd R. Hunter
Linda Hutchinson
Adam Johnson
Gary and Kathi King
Ladies of the Lakes Quilt Guild
Mark and Donna Lenda
John and Mary Lewis
Lonsdorf Dental
Lloyd Luedtke
Laurie Michlig
David and Nancy Miller
Mark and Jamelle Milne
Glenn Morrison
Gerald and Linda Mroczkowski
Sara Muender and Thomas Folsom
Dean and Margie Musbach
Judi and Lindsey Nelson
Perry and Carol Nordness
Norwood Pines Supper Club
Susan and Nick Ohlsson
Margo and Alan Oppenheim
Park City Credit Union
Pea Patch Saloon
Carrie Petersen
Lynne Petruzates
Carol Phillips
Charles and Susan Pollack
Robert N. Prentiss, Jr.
Debra L. Preuhs
Robert Prosser
The Reverend William Radant
Jeffrey and Marlyce Randall
Charles and Carol Rebeck
Redman Gelin’s Eye Care
Paul and Kristeen Schroeter
Dan and Jody Sherman
Susan Sinner
Soldiers on Sleds
Phoebe Spier and Eric Olsen
Barbara Todd
Gracee I. Vickerstaff
David Voeltz
Dennis and Ethel Wanke
June M. Westphal
Julie Williams

Aspen**\$100 to \$149**

Jim and Lisa Albers
Karina Alberts
Sharron Anderson
Richard Anklam
Ascensus
Geoffrey and Elodie Bacci
Fred Bartkowski
Dick and Pat Bechtel
Dr. George and Kim Beiser
Dennis and Nancy Berndt
Karen Blaschke
Christine Boylan
Cathy Bradshaw
Chip and Jayne Bromann
Deb Brossard
Clifford Brosseau
Rod and Debra Brost
David Brozek
Jami Brussat
Robert and Bonnie Butzer
Gregory and Virginia Buzzell
Pamela Caldwell
John S. and Trudy E. Campbell
Michael and Diane Capener
Douglas and Kathleen Cassidy
Dennis and Karen Christopherson
Joyce Clem
Joseph and Margaret Coil
Jim and Mary Ann Colasacco
Robert and Nancy Cooper
Sue Crall
Kathleen Crawford
Carole Curtin
Hannah (Bonnie) Dana
Hans and Linda Delius
Anne Derber
Glenn and Diane Doering
Maxine Drager
Dave and Mary Duellman
Mark Dummer
Scott Dvorak
Amy Eager
Eagle River Golf Course
Linda Eckert
Lynn Eggebrecht
Anita Emerson
Katrina Emerson
Julie W. and Elliott Everson
Mary Federer
Rebecca Felsheim
Philip Fry
Dan and Joyce Gavronski
Sam and Sandra Gildseth
William and Diane Gitzlaff
Sandy Grambow, RN, BSN
Laurie Grayburn
Lynne Petruzates
Carol Phillips
Charles and Susan Pollack
Robert N. Prentiss, Jr.
Debra L. Preuhs
Robert Prosser
The Reverend William Radant
Jeffrey and Marlyce Randall
Charles and Carol Rebeck
Redman Gelin’s Eye Care
Paul and Kristeen Schroeter
Dan and Jody Sherman
Susan Sinner
Soldiers on Sleds
Phoebe Spier and Eric Olsen
Barbara Todd
Gracee I. Vickerstaff
David Voeltz
Dennis and Ethel Wanke
June M. Westphal
Julie Williams



ANNUAL COMMUNITY EVENTS

MONDAY, JUNE 8TH AND TUESDAY, JUNE 9TH, 2026

Lakeland STAR Golf Outing

The annual Lakeland STAR Golf Outing is held at North Fork Fin & Filet and the Minocqua Country Club. This event supports Autism Services and the students of Lakeland STAR School/Academy and Rising STAR Transition Center. For more information visit howardyoungfoundation.org.

THURSDAY, JUNE 18TH, 2026

Let's Tee Off Against Breast Cancer

A vibrant, women-only golf event at Trout Lake Golf Club raises funds for "We Care" care package totes for first time breast cancer patients across the Northwoods. Visit troutlakegolf.com/letsteeoff to learn more.

SATURDAY, JUNE 27TH, 2026

Lakeland Pantry Bear Cupboard Run

Lace up for the 17th Annual Bear Cupboard Run on the scenic Bearskin Trail! Every step supports the Lakeland Pantry and its mission to feed local families. Learn more at lakelandpantry.com.

SATURDAY, JULY 18TH, 2026

Seasons of Life Gardenfest

Stroll through beautiful gardens, enjoy live music, raffles, Lakeland Gardeners plant sales and ice cream – all benefiting the Seasons of Life Gardens. Learn more at lakelandgardeners.org.

FRIDAY, AUGUST 14TH AND SATURDAY, AUGUST 15TH, 2026

Minocqua Dragon Boat Festival

Experience the excitement of the 10th Annual Minocqua Dragon Boat Festival! Enjoy thrilling races, teamwork, and community spirit – all to support the work of the Howard Young Foundation.

Register, volunteer, sponsor or pledge at minocquadrdragonboat.com.

TUESDAY, SEPTEMBER 8TH, 2026

Bonhomie Club Recognition Evening

An evening dedicated to you – our generous donors. Qualifying 2025 donors will join us for an exclusive event to celebrate your contributions to our hospitals and/or Seasons of Life Hospice with hors d'oeuvres and an update on Howard Young Foundation activities.

To be a part of the Bonhomie Club in 2026, donate \$100 or more before the end of this year.



Decade of the Dragon

MDBF10 Kick-off Party

- Dragon Boat Practice
- Food Trucks
- Live Music
- Beer Tent

JOIN US

Friday August 14 (4:00–8:00 PM)
MDBF Kick-off Party

Saturday August 15 (8:30–5:00 PM)
MDBF Race Day



Howard Young Foundation

P.O. Box 10, Minocqua, WI 54548



Building For the Future, Building a Legacy

What will your legacy of care look like? With a planned gift, you can extend your care for our community beyond your lifetime, helping ensure exceptional health-care is here for your children, your grandchildren, and generations that follow.

► **Call 715-439-4005 today to learn more!**

This publication is brought to you by the Howard Young Foundation,
serving our community since 1984. To make a donation:



CALL

Our office at
715-439-4005



MAIL

Howard Young Foundation
P.O. Box 10
Minocqua, WI 54548



ONLINE

Visit our website at
howardyoungfoundation.org



PLANNED GIVING

when you include us in
your estate planning.
(Talk to your tax advisor.)



STOCK

donations are a
tax-smart way
to give. *(Call for
instructions.)*

The Howard Young Foundation does not provide financial or tax advice and encourages donors interested in advanced planning to speak with their CPA and/or tax advisor.