



**Soul Blade**  
(By Namco)  
By Johnny Ballgame

Price not available  
Available now

Fighting  
2 players

Challenge  
adj  
Level

TEEN  
T  
AGES 13+

Replay  
HI



## Fun Factor

**5.0** Namco's tradition of top-fisted fighting games continues with Soul Blade, a title that combines the familiar feel and gameplay of Tekken with its own touches of superior graphics, fantastic features, and a deadly arsenal of weapons. Soul Blade heads the early list for best fighting game of the year.

## Graphics

**5.0** Soul Blade offers stunning 3D characters, amazing light-sourcing where you actually see day turn to night during a match, and beautifully detailed backgrounds that are sugar to both the eyes and the soul.

## Control

**5.0** Combos, juggles, throws, dodges, counters, and weapon lock-ups highlight the championship-caliber control. If you block too much, your weapon shatters and you're forced to fight the rest of the round with your bare hands.

## Sound

**4.5** Mesmerizing music and realistic-sounding sword-clanking provide your ears with magic, but the announcer's voice at the end of each match becomes annoying.

**S**oul Blade blazes into the fighting game arena with a unique combination of barbaric brawls, wicked weapons, and head-knocking gameplay. It features the best-looking 3D characters to date, superstar special effects that include glowing weapon trails, and a devastating list of moves, combos, and options that dominates every fighting game on the market today—including Tekken 2.

## Where's Voldo?

The game takes place in the 15th century where war is rampant and rumors of the

## CERVANTES



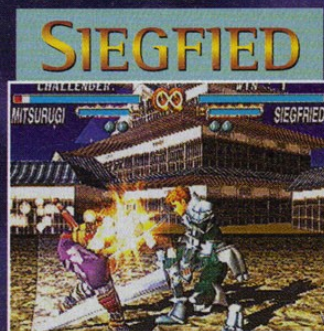
**PRO TIP:** Do Cervantes's Charging Roundhouse by tapping →, (→ K).

world's most powerful sword, the Soul Blade, have drawn 10 raging warriors into battle for the mysterious weapon. Each combatant represents a unique style of fighting and uses weaponry particular to their native land, such as Taki, a knives expert from Japan who's eager to slit your throat, and Li Long, a Chinese assassin who's a nunchaku master.

Soul Blade offers Arcade, Versus, and Survival battles, but it's the Edge Master mode



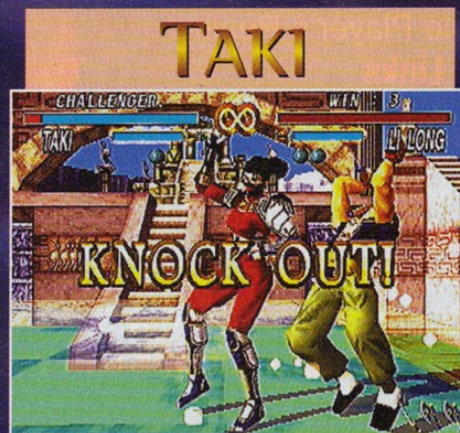
**PRO TIP:** When in close, press (VA G) to do special moves on your opponent.



**PRO TIP:** Tap VA, VA, VA to smash your enemy with Siegfried's Brain Masher.



**PRO TIP:** The Critical Edge super moves are performed by pressing (HA VA K).



**PRO TIP:** Taki's Silent Storm is executed by tapping VA, VA, HA, K.

## VOLDO



**PROTIP:** Attack with Voldo using his Rat Chase & Kick by tapping (↓ HA), HA, HA, K.

## HWANG



**PROTIP:** To execute Hwang's Triple Kick, tap →, (→ K), K, K.

## LI LONG



**PROTIP:** Li Long's Last Breath devastates enemies whose backs are turned. Tap (G HA) when behind your opponent.

## SEUNG MINA



**PROTIP:** Seung Mina's Orion Express is performed by tapping (HA VA), (← HA).

## ROCK



**PROTIP:** Rock's Demolition Strike is a powerful attack. Tap (→ HA), HA, VA.

## SOPHITA



**PROTIP:** To do Sophita's Tricky Tangle, tap HA, HA, ↓, K.

that pushes the game ahead of its competition. This mode allows you to take one character through a series of fights and collect new weapons unique to that fighter upon victory. For example, after defeating her first opponent, Taki has the option to trade in her knife for a bladed fan that does more damage but is slower to strike. So depending on whether you prefer to fight with speed or power, you now

have the option to use the weapon that best suits you, adding an entirely new level to your fighting strategy. You can then store the weapons on a memory card and use them in any mode you chose, including the two-player Versus mode.

## MITSURUGI

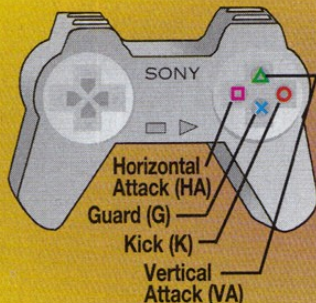


**PROTIP:** Tear into opponents with Mitsurugi's Triangle Cutter by tapping VA, VA, HA.

### Taki This, and That

Savage moves enable you to beat, stab, slice, and dice opponents with vicious violence that is sure to excite fight fans to unbelievable heights. Bow down to the new king of fighters, and the first gotta-play-it game of the year. **G**

## Controller Legend



- HA = Horizontal Attack
- VA = Vertical Attack
- G = Guard
- K = Kick
- ( ) = Execute commands in parentheses simultaneously.

Note: All techniques are described under the assumption that your character is facing to the right. If they're facing left, reverse any Toward and Away commands.