

ASSEMBLY INSTRUCTIONS

6010 SERIES | ARISTOCRAT SOUND FLOOR LECTERN



ASSEMBLY TIPS

Read the instructions carefully and follow Diagrams to ensure an easy and correct assembly.
Do not use a sharp instrument such as a Knife or a Screwdriver to open the packaging, as this may scratch or possibly damage the unit.
All assembly should be done on a clean protected surface such as carpet or the like.
Make sure that you have all the required Parts listed below.

CARE OF YOUR CABINET

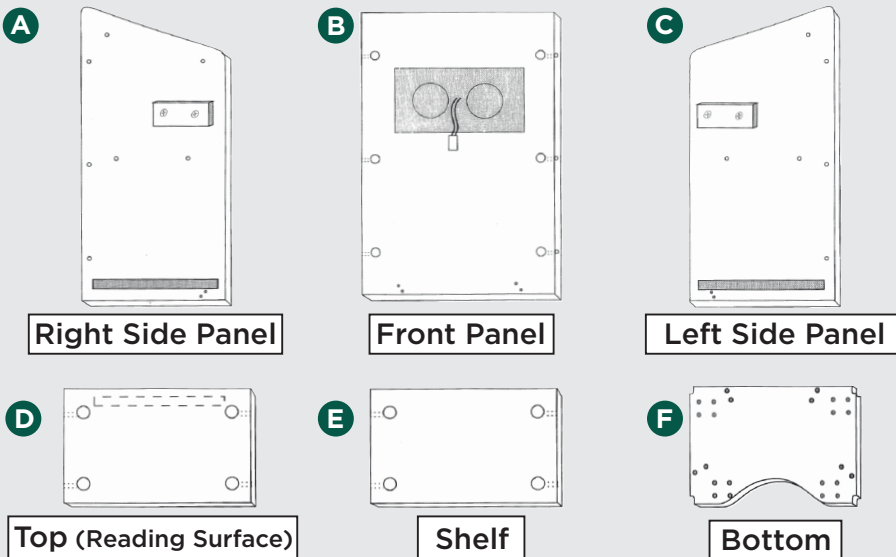
All exterior and interior exposed surfaces are Melamine covered as well as edges in matching patterned Melamine material.
To refresh the appearance, wipe the surface with a cloth soaked lightly in furniture oil. Avoid speaker grill area. Your cabinet will look as good as new.

TECHNICAL SPECIFICATIONS

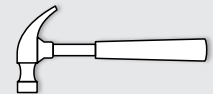
Power Output.....50W RMS at 10% THD
Mic.....Electret Condenser Mic (2)
Aux150 mV>220K
Frequency.....100HZ-25KHZ
Response.....+ 3dB

Power Supply ... 110-120V ohms DC 10.8 12V
Fuse.....2A normal
Output8 ohms
Accessories.....Handheld mic, Gooseneck

PARTS



TOOLS NEEDED



Hammer



Phillips
Screw Driver

INCLUDED HARDWARE

①



Locking
Casters x2

②



Non-Locking
Casters x2

③



Cam Bolts
x14

④



1/2" Phillips
Screw x36

⑤



Cam Locks
x14

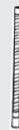
⑥



Corner
Braces x4

INCLUDED ACCESSORIES

⑦



Gooseneck x1

⑧



Hand-held
Condenser Mic x1

⑨



Amplifier
Series 700 x1

⑩

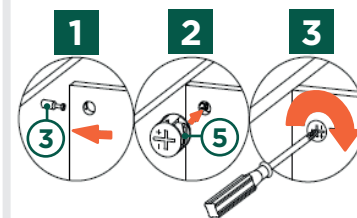


Tie-Clip
Mic x1

CAM LOCK ASSEMBLY

- 1 Proceed by aligning the Cam Bolts ③ with the Cam Locks ⑤.
- 2 Insert the Cam Bolts in the Cam Locks until the both Panels are flush.
- 3 Once the two Panels are flush, use a Phillips Screwdriver to tighten the Cam Locks to lock the two Panels together.

Figure 1



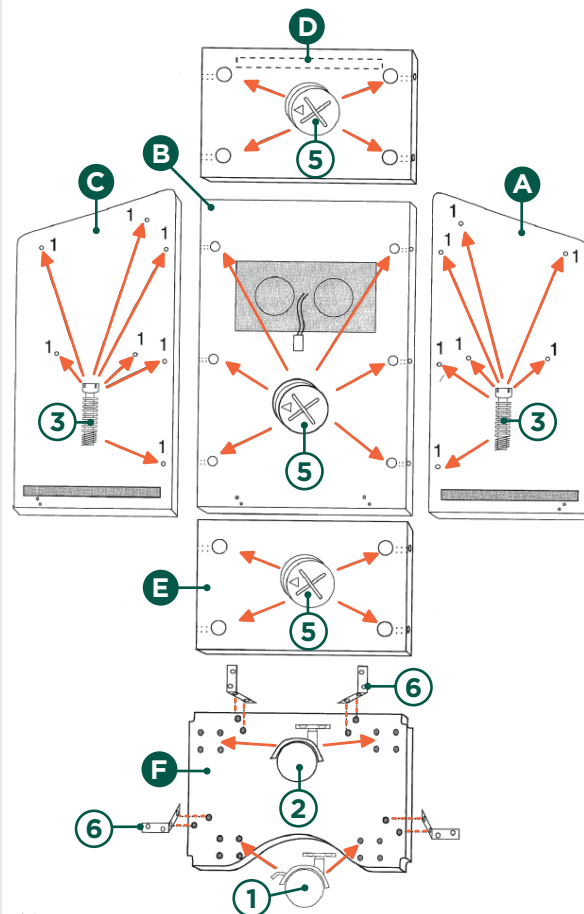
INSTALLATION OF HARDWARE

- 1 Lay out the Wood Panels as shown in **Diagram A** (make sure the factory drilled holes are facing upwards). You can determine the top of the front Panel by identifying the T-molding.
- 2 Identify the holes numbered 1 in **Diagram A**. Screw the Bolts ③ into the pre-drilled holes with a Phillips-head Screwdriver. Be sure to tighten the screws all the way.

⚠ Be careful not to over-tighten the Bolts as this will strip the Wood!

- 3 Insert the Cams ⑤ in the larger holes as shown on **Diagram A**. **MAKE SURE THE ARROW ON THE CAM IS POINTING TO CLOSEST EDGE AND ALIGNED WITH THE HOLE ON THE EDGE.**
- 4 On Panel **F**, screw in the four Casters. The Locking Casters ① should be screwed into the bottom closest to the T-molded contoured edge. The second pair of Non-Locking Casters ② should be screwed in closest to the unfinished edge.

DIAGRAM "A"



ASSEMBLY OF LECTERN

! It is important that the instructions on the Assembly are followed carefully.

- 1 Align the holes on Panel **B** edges with the three Cam Bolts **3** on Panel **A**, tighten Cams by turning clockwise until locked.
- 2 Next will be Panel **D** and Panel **E**. Make sure the Cams **5** on Panel **D** and Panel **E** face the bottom of the lectern. The two highest Bolts align with the two holes on the edge of Panel **D** (these holes reach until the Cams). The two Bolts in the center of Panel **A** will align with the two holes on the edge of the shelf. Gently push the shelves down on to the Cam Bolts until the shelf is completely on the right side Panel. Tighten.
- 3 Take Panel **F**, with the Casters facing the bottom of the unit insert Panel into the groove, make sure that the Panel is all the way in the groove.
- 4 Now apply Panel **C** to the semi assembled unit. Be sure to align the Cam Bolts **3** to the holes on both Panel **B** and Panel **E**. Be sure that Panel **F** is securely in groove. Tighten Cams **5**. **Diagram C**.
- 5 Screw the Corner Braces **6** on the bottom Panel **F** into Panels **A**, **B** and **C**.

- 6 Connect the plug coming out of the speakers on Panel **B** to the plug coming out of the back of the Amp **9**. Fit the Amp between the two sides and bring the Amp up until it reaches the cleats (Wood Stub) then from the bottom of the Amp screw in four Screws **4**. (**Diagram D**)
- 7 Once again go over all the Cams and check to make sure the Lectern is sturdy.
- 8 Screw on Gooseneck Mic Holder **7** and install Microphone **8** for sound use.



Double check all Bolts and Screws to be tightened securely before use. Check all Bolts and Screws periodically. Failure to completely tighten the Bolts and Screws may result in tipping and possible injury!

Congratulations, your **ARISTOCRAT SOUND FLOOR LECTERN** is now assembled and ready to be used!

Dear Customer, Thank you for your purchase. Although extreme care goes into manufacturing & packaging of this product, mistakes are possible. If you encounter any missing parts or difficulty in assembly, please contact our customer service Toll Free at **1-800-261-4112** or info@nationalpublicseating.com for courteous & immediate resolution to your problem.

DIAGRAM "B"

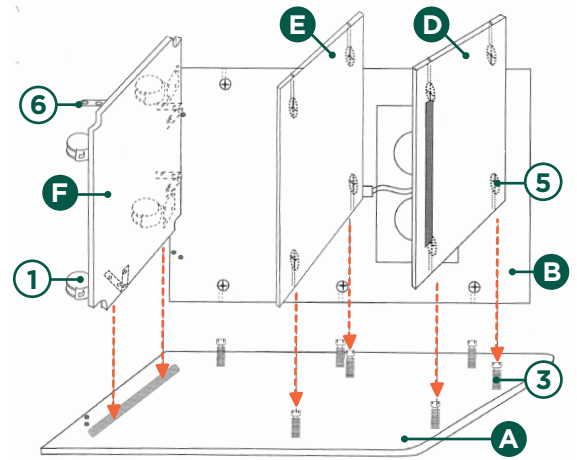


DIAGRAM "C"

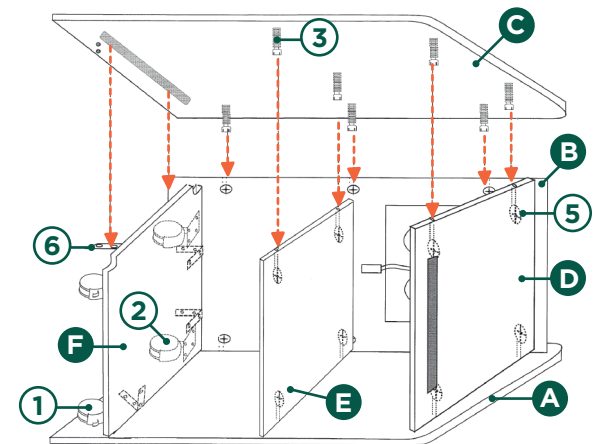
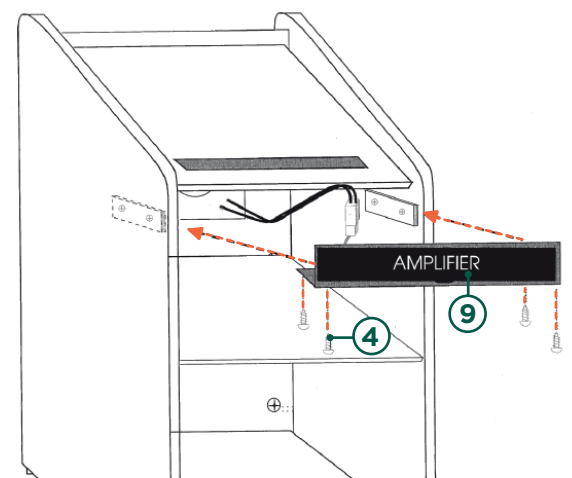
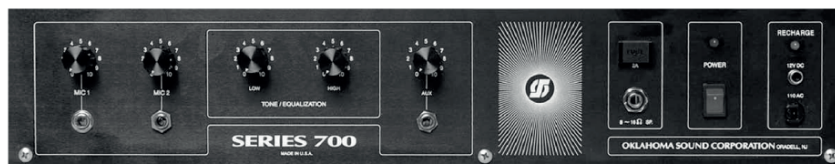


DIAGRAM "D"



700 SERIES AMPLIFIER OPERATING INSTRUCTIONS



OPERATING PRECAUTIONS

Before operating the amplifier, be sure you fully understand all instructions and features of the amplifier. **DO NOT** turn amplifier on until all input and output connections have been made. **NEVER** replace fuses unless power is off.

MICROPHONE INPUT CONNECTION

The microphone input accepts 1/4" phone jack. Do not position microphone next to or facing speakers. This may cause acoustic feedback.

AUXILIARY INPUT

One auxiliary input is provided for radio tuner; tape recorder, CD player or multimedia equipment. Output level is adjusted by the auxiliary volume control.

TONE/EQUALIZATION CONTROLS

The Low and High frequency controls are similar to the bass and treble controls found on most stereo systems. Optimum tone is achieved by first setting both knobs halfway; adjust Low and High frequency controls to suit environment.

POWER SUPPLY 12V DC OPERATION

Connect a 12 volt rechargeable battery 5 amp (not included) to the battery input connector located on the panel of the amplifier (using 6' battery cable). Note the positive line is equipped with an in-line fuse, as this is the only polarity identifier. Be sure that the positive line (in-line fuse) is connected to the positive pole of the battery (Red terminal) and the negative line (no fuse) is connected to the negative pole (Black terminal). When lectern is plugged into a standard wall outlet, the battery will automatically recharge. Green indicator light illuminates during recharge mode.

PRECAUTIONS

- Set Mic volume control on lowest when turning unit on.
- Ensure correct polarity for D.C. supply connections.
- Reverse connections will blow the fuse and may damage internal circuitry.
- Always replace fuse with specified rating.

REMOVAL AND INSTALLATION OF AMPLIFIER

If your amplifier has to be removed for servicing follow these simple steps:

- 1) Disconnect A/C wall plug.
- 2) Remove 4 side screws two on each side panel under amp top.
- 3) Disconnect speaker wire at rear of amplifier.
- 4) Pack it into a strong box with ample cushioning and return to factory
- 5) To install new amplifier reverse the above procedure.