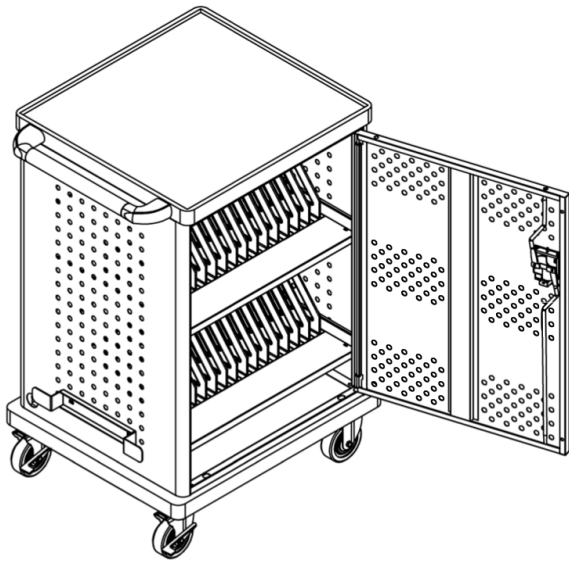


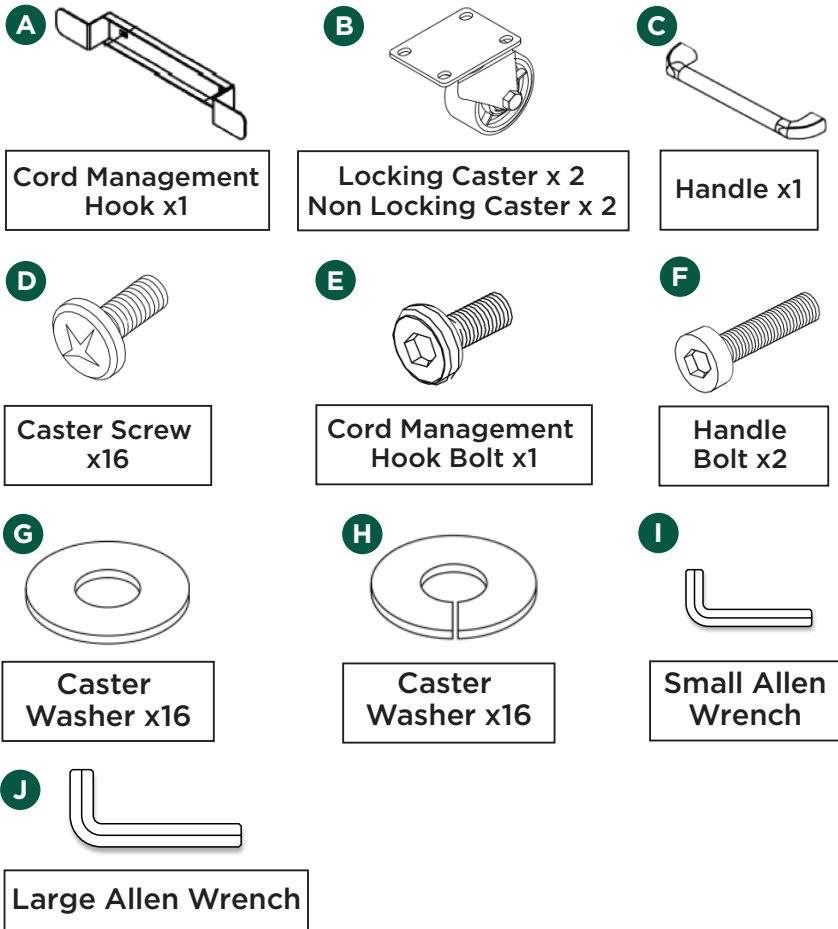
# ASSEMBLY INSTRUCTIONS

## DCC SERIES | DUET CHARGING CART

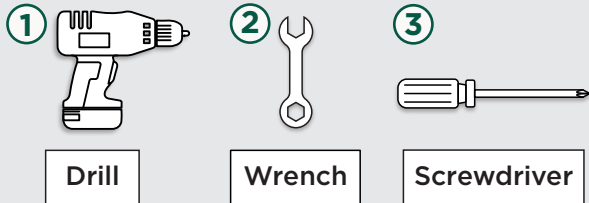
### DUET CHARGING CART



### INCLUDED PARTS & HARDWARE



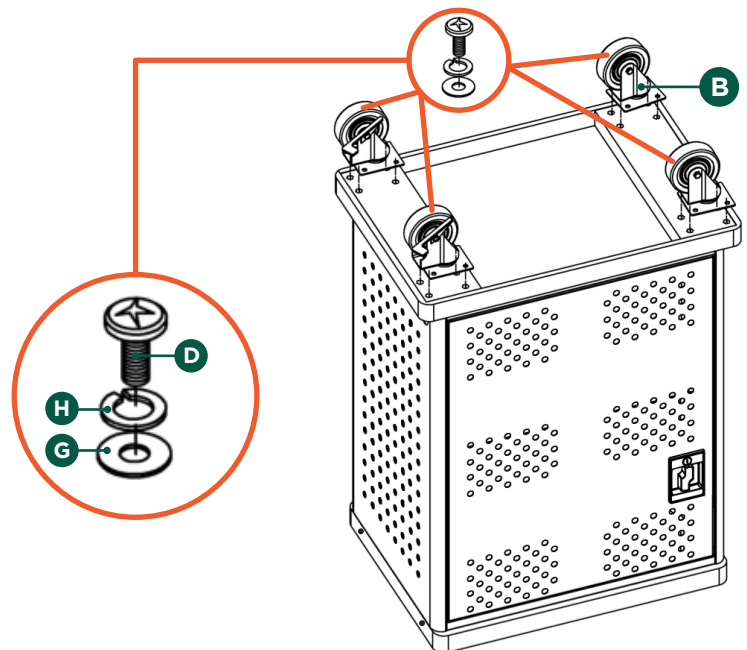
### RECOMMENDED TOOLS



### ASSEMBLING THE CASTERS

**1** Begin by facing the unit upside down and install each Caster **B** using four Screws **D** and four Washers **G** and **H**. Two Washers (one big **G** and one small **H**) should be inserted onto each Screw **D** as shown.

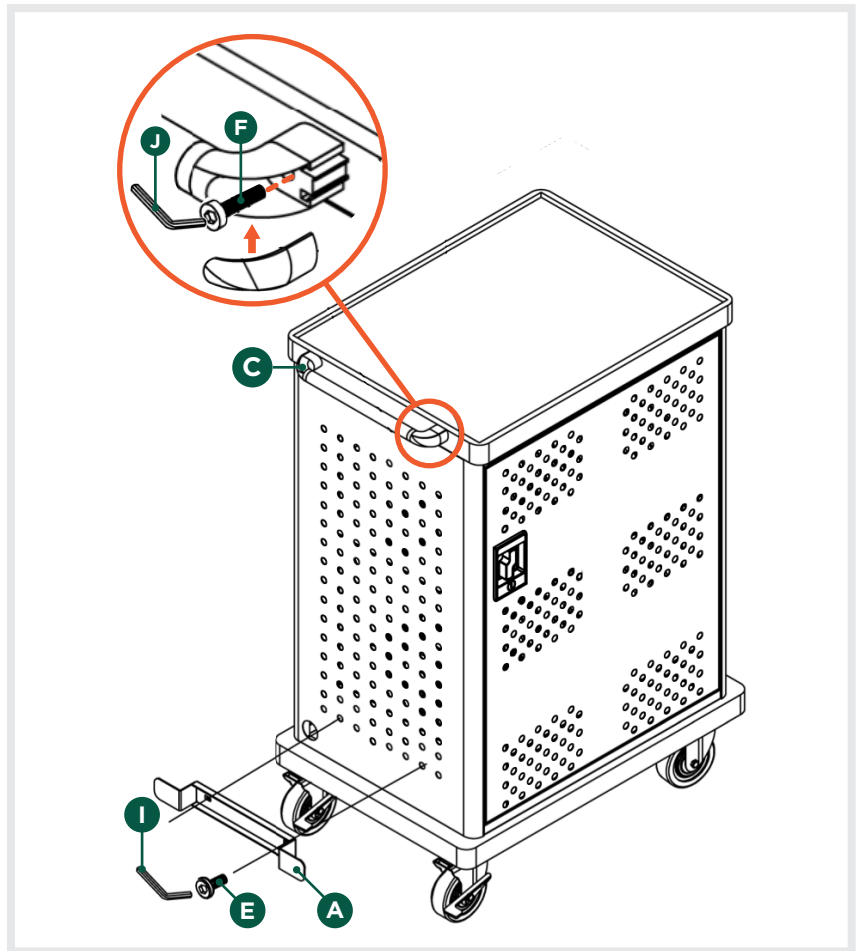
Please note that the Locking Swivel Casters should be on the side of the pushing/control Handle.



## HOOK AND HANDLE INSTALLATION

**1** Slide the plastic cap off the two ends of the Handle **C** and install it to the top side of the unit using the included two Long Hex Bolts **F** and Allen Wrench **J**.

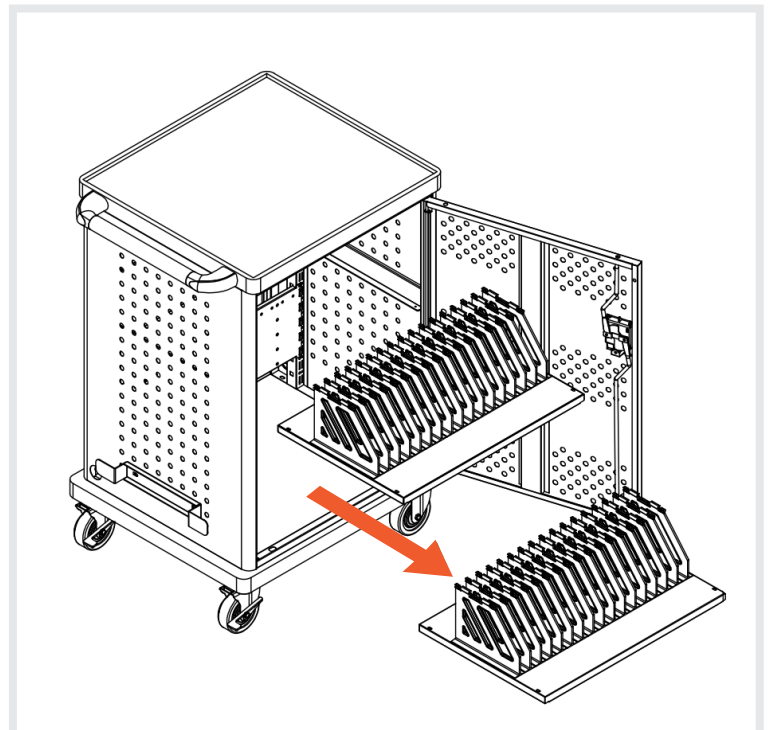
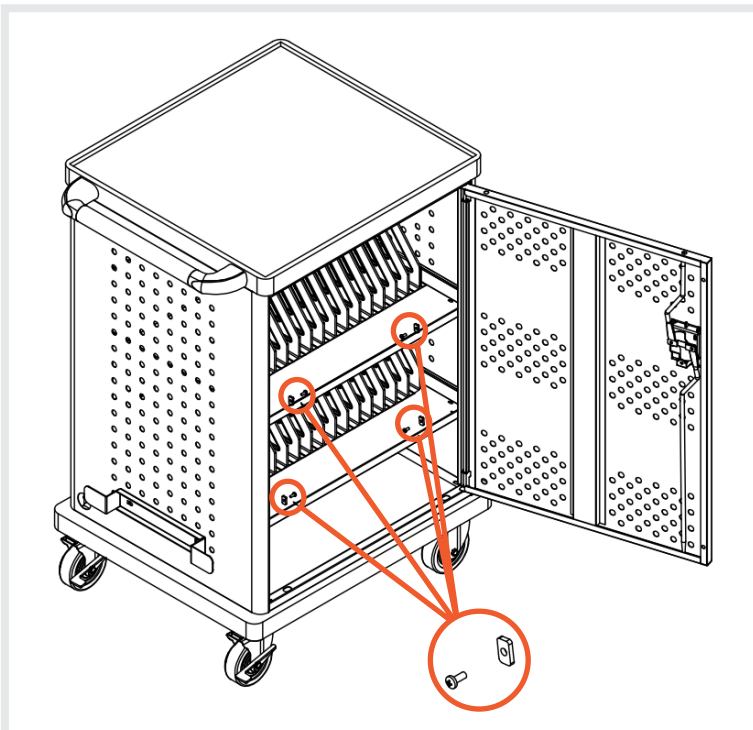
**2** Next, install the Cord Management Hook **A** to the lower side of the unit using the included Hex Bolt **E** and Allen Wrench **I** as shown in the image.



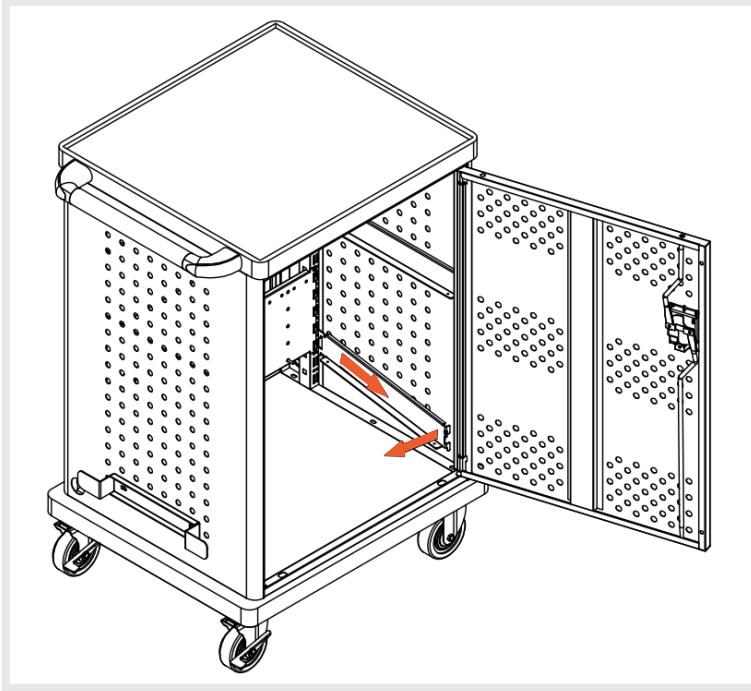
## INSTRUCTIONS TO ADJUST SHELVING

**1** Begin by removing the four Screws and Tabs from the side of the Shelves as shown.

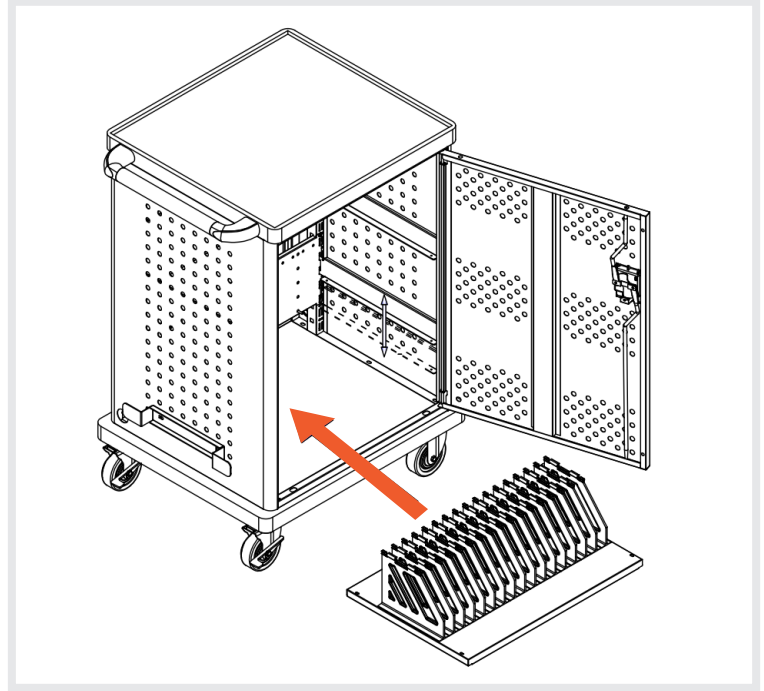
**2** Slide Shelves out of cabinet.



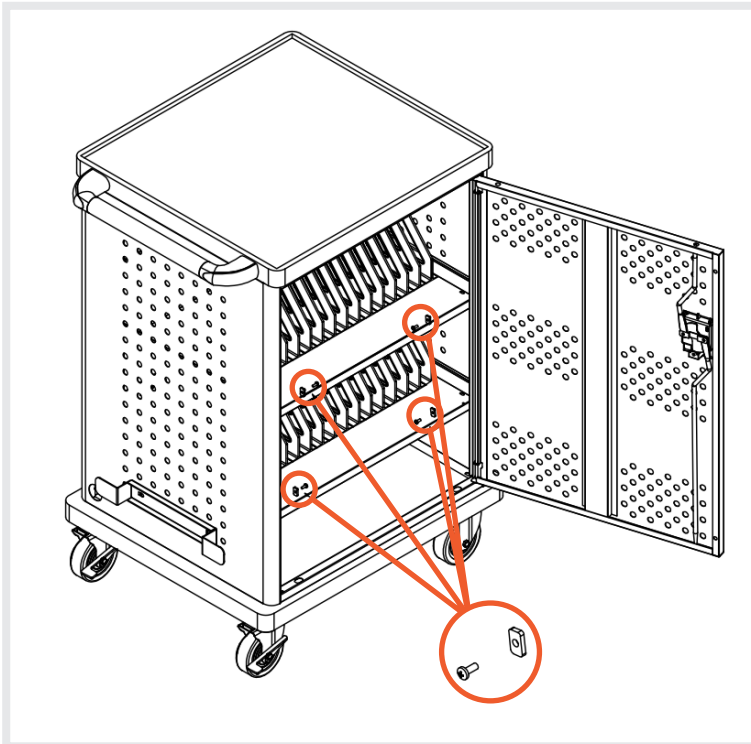
**3** Lift and adjust the side Shelf Supports to the desired height.



**4** Insert the shelves into the cabinet.



**5** Replace the Screws and tabs for extra Shelf stability (not required).



**Congratulations, your DUET CHARGING CART is now assembled and ready to be used!**



**!** Double check all Bolts and Screws to be tightened securely before use. Check all Bolts and Screws periodically. Failure to completely tighten the Bolts and Screws may result in tipping and possible injury!

*Dear Customer, Thank you for your purchase. Although extreme care goes into manufacturing & packaging of this product, mistakes are possible. If you encounter any missing parts or difficulty in assembly, please contact our customer service Toll Free at 1-800-261-4112 or [info@nationalpublicseating.com](mailto:info@nationalpublicseating.com) for courteous & immediate resolution to your problem.*