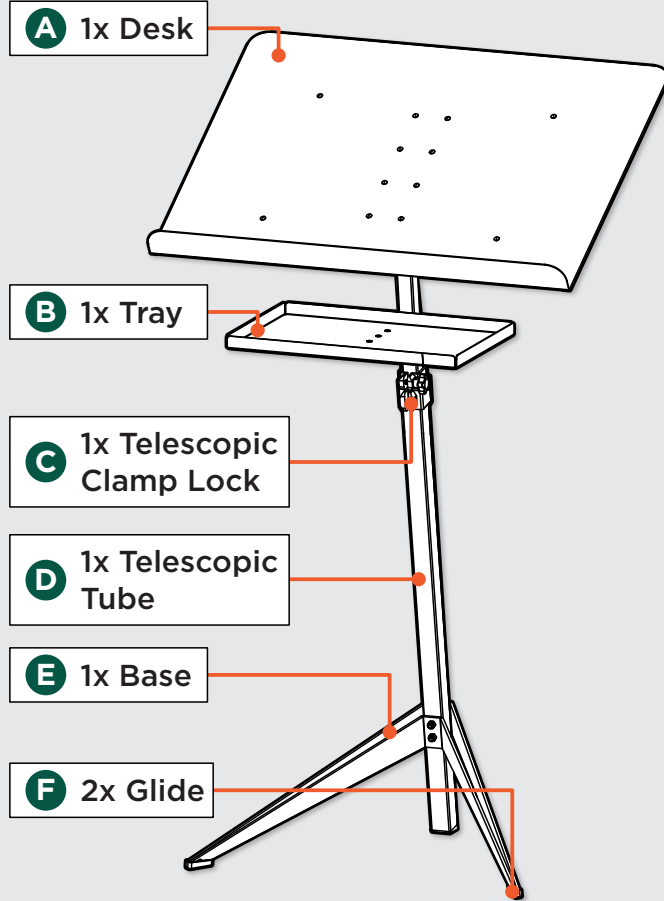
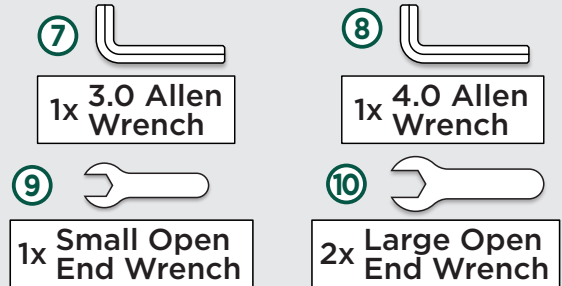


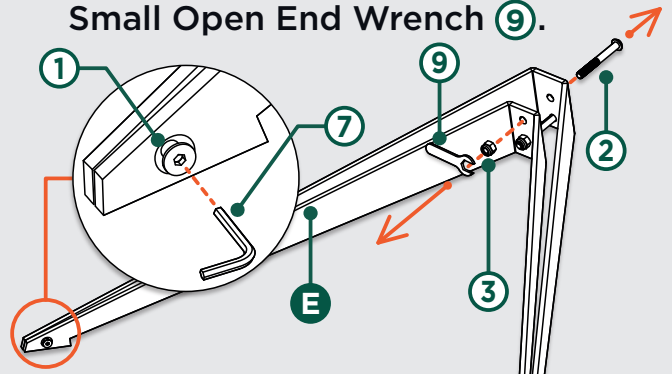
CONDUCTOR'S STAND COMPONENTS



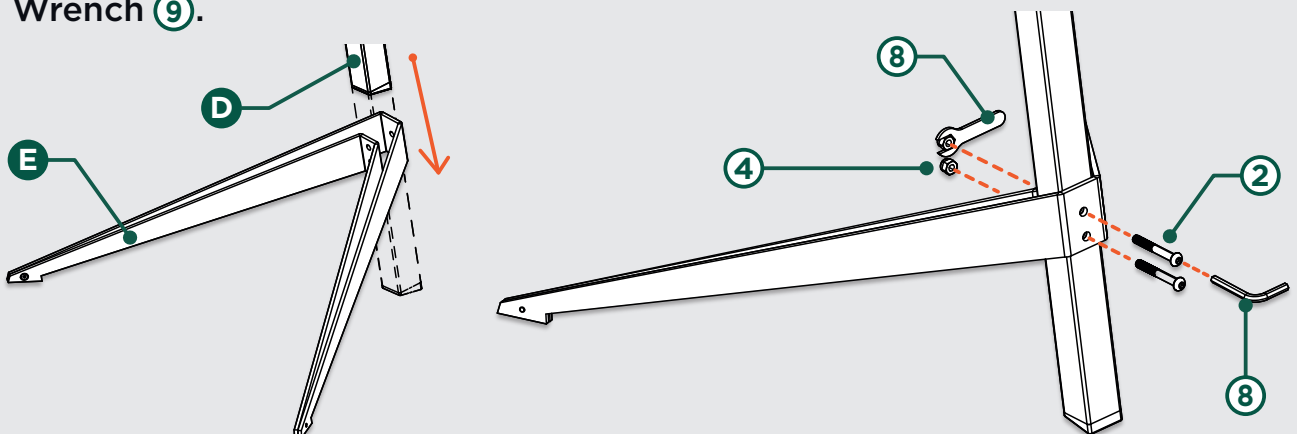
TOOLS FOR ASSEMBLY



1 Using the 3.0 Allen Wrench **7** loosen the base end M5x8 Bolts **1** so that the Base **E** has some clearance, then remove the M6x50 Bolts **2** and M6 Lock Nuts **3** using 4.0 Allen Wrench **8** and Small Open End Wrench **9**.

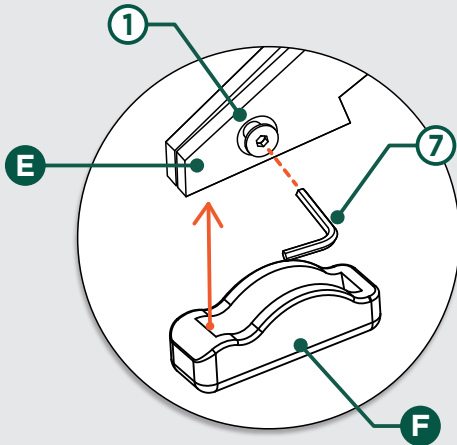


2 Install Conductor's Base **E** to Telescopic Tube **D** as follows: Begin by Inserting the telescopic tube through the base. Align the two base holes over two holes on telescopic tube. Insert two M6x50 Bolts **2** and tighten with two M6 Lock Nuts **3** using 4.0 Allen Wrench **8** and Small Open End Wrench **9**.

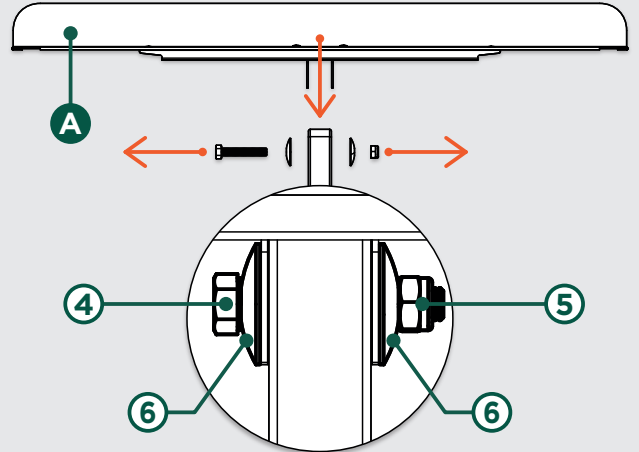


 **Ensure that all bolts are fastened tightly.**

- 3** Tighten the M5x8 Bolts **1** on the ends of the Base **E** securely using 3.0 Allen Wrench **7**. Place the Glides **F** on the ends.

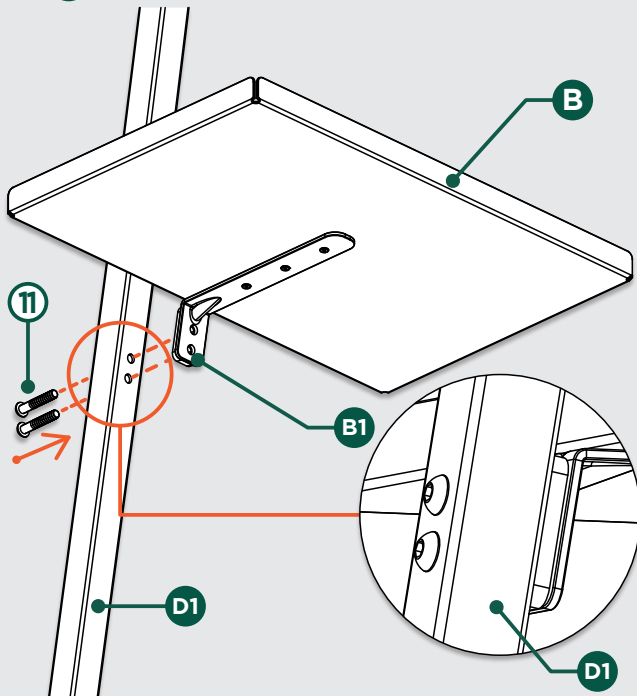


- 4** Remove the pre-installed M8 Hex Head Bolt **4**, M8 Lock Nut **5** and Dome Washers **6**. Slide the Desk **A** into position and secure the previously removed hardware tightly using two Large Open End Wrenches **10**.

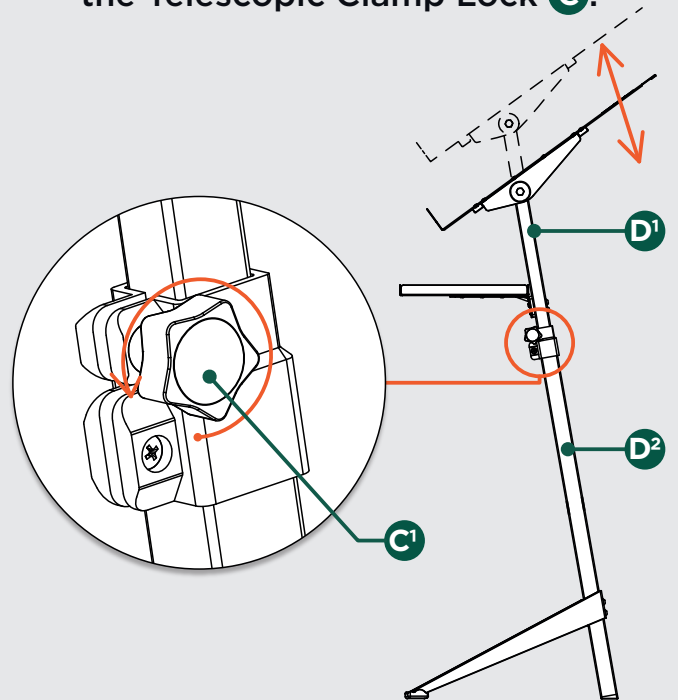


! Ensure that all bolts are fastened tightly.

- 5** To install the tray **B**, align holes on the Tray Bracket **B1** with the holes on the Inner Tube **D1**, to secure the Tray in position use the **11** M6x40 screws provided



- 6** To adjust the height of the Conductor's Stand, loosen the Clamp Lock Knob **C1** and pull out the Inner tube **D1**, then re-secure the Telescopic Clamp Lock **C**.



Congratulations, your Conductor's Stand is now assembled and ready to be used!

Dear Customer, Thank you for your purchase. Although extreme care goes into manufacturing & packaging of this product, mistakes are possible. If you encounter any missing parts or difficulty in assembly, please contact our customer service Toll Free at 1-800-261-4112 or info@nationalpublicseating.com for courteous & immediate resolution to your problem.