



Seamless Comfort, Spacious Seating!



Featuring Gravity-Locking Technology

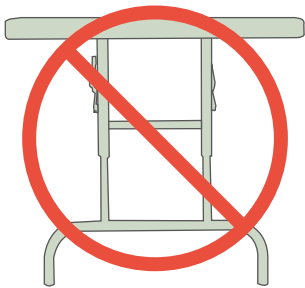


COMFORT MAX FOLD-IN-HALF TABLE SHAPES

ROUND



RECTANGLE



**NO WISHBONE LEGS
FOR ZERO OBSTRUCTION**
-Extra Seating Capacity-

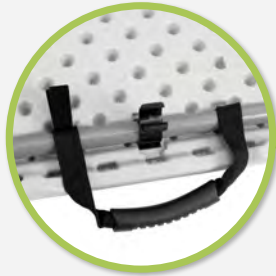


Shared Features

Instant Setup: No assembly required!



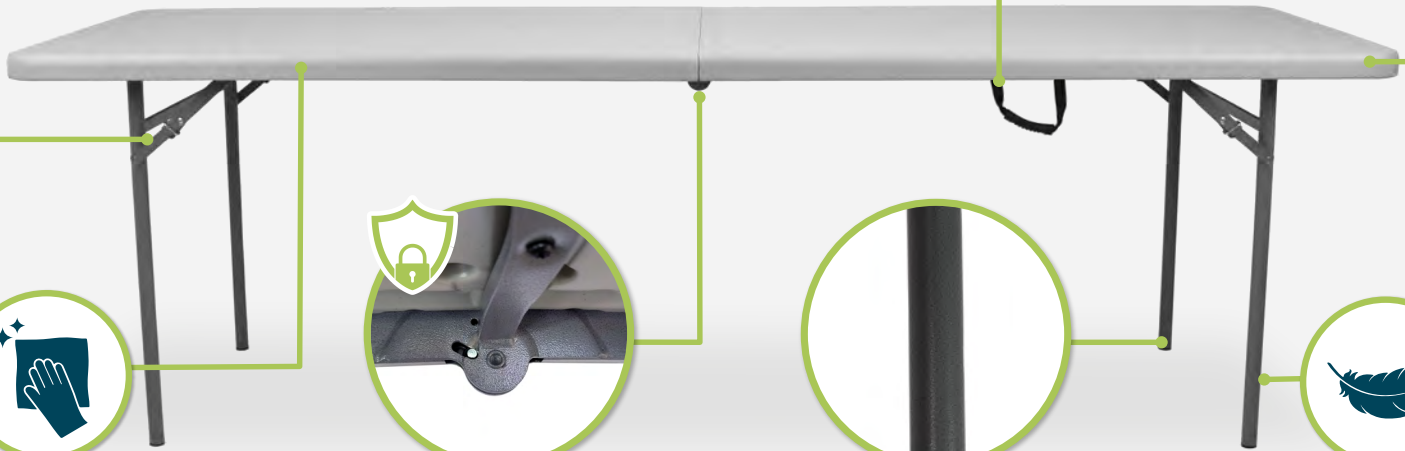
Safety Gravity Locks Ensure Table Legs are Secure During Use



Built-In Carry Handle



Durable Polyethylene Tabletop with Beveled Edges



Stain Resistant and Easy to Clean



Innovative GRAVITY-LOCKING Technology for Safe Setup



Constructed with Industrial Strength Steel



Lightweight Design

Quick Setup, Versatile Utility: Unfold, Use, and Store Easily!

Unfold



Enjoy



Store



RECTANGLE

The Ultimate Space-Saving Table Innovation!



Easy Transportation & Storage



Compatible with DOLLY



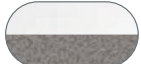
Stores and Transports Up To 7 CMFIH-3096 Units

DYMU



evenly distributed

Color



Speckled Grey Top
Grey Frame

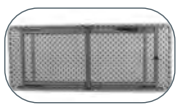


can withstand heat up to **212°**

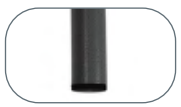
Rectangle Tables Features



1.75" Thick Industrial Grade Blow Molded Tabletop

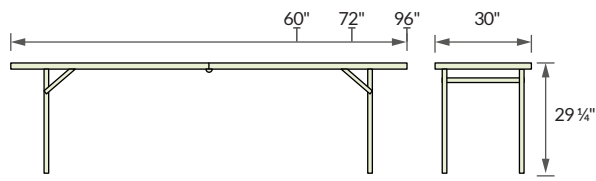


Powder-Coated 18-Gauge Framing System



18-Gauge Legs with Non-Slip Glides

Table Sizes Length Options



- CMFIH3060**
30"W x 60"L x 29 1/4"H
- CMFIH3072**
30"W x 72"L x 29 1/4"H
- CMFIH3096**
30"W x 96"L x 29 1/4"H

ROUND

*Transform Any Space, Anytime:
Round, Foldable, and Ready
to Impress!*








Easy Transportation & Storage



evenly distributed

Color



Speckled Grey Top
Grey Frame

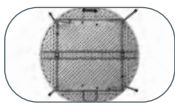


can withstand
heat up to
212°

Round Tables Features



2" Thick
Industrial Grade Blow
Molded Tabletop

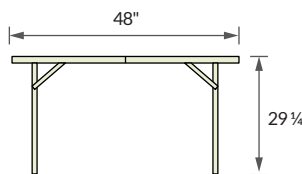


Powder-Coated
19-Gauge
Framing System

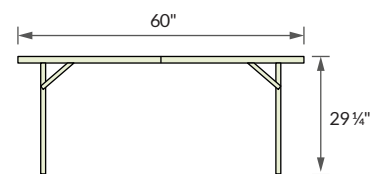


18-Gauge Legs
with Non-Slip Glides

Table Sizes Round Options



CMFIH48R



CMFIH60R