

# POWER 150

PRODUCT\_INFO\_1225





# INDEX

## 1. INTRODUCTION

## 2. POWER 150 PRESENTATION

## 3. PRODUCT INFO

## 4. POWERPACK COMPARISON

## 5. SPECIFICATIONS & USP





# 1.

## INTRODUCTION





Over the years, Vitrifrigo has continuously invested in **technological innovation** to improve the efficiency, reliability, and ease of use of its products.

A significant example of this evolution is the transition from the traditional bivalent control unit to the adoption of new power supplies. With the introduction of the Power300 and the **new Power150**, Vitrifrigo has taken an important step forward, enabling a smooth and **automatic transition between the alternating mains voltage** and the battery's direct current.

The new power supplies therefore represent a new generation of power devices, designed to offer **superior performance** and to meet the ever-growing demands for reliability and comfort, in line with Vitrifrigo's philosophy focused on quality and innovation.







An integral part of the new Vitrifrigo products is the ability to offer compatibility with new solutions by adding the AC/DC function, using the innovative **Power Pack system by Vitrifrigo**

This new option, compared to the previous bivalent control unit originally installed on compressors, was developed for the following reasons:

- *Certification requirements, related to products marketed in “high voltage” applications and to regulations concerning the gases used inside the products*
- *Needs for independence and supply autonomy from third-party suppliers in the selection and use of “sensitive” components such as electronic parts, in light of post-COVID-19 supply chain challenges*
- *Technical requirements, for the development of a single application interface for alternating current installations, validated according to the specifications of the compressors in use and standardized by size across a wide range.*







AC/DC UNIT

*Replaced by*

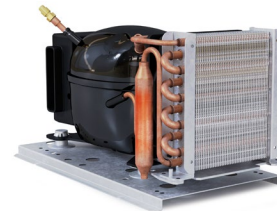
POWER PACKS



DC UNIT



NO MORE AVAILABLE



SUITABLE FOR DIFFERENT  
COMPRESSOR MODELS



LIGHT AND COMPACT  
IN DIMENSIONS



HIGH OUTPUT POWER  
UP TO 180WW



AC PLUGS  
AVAILABILITY





# 2.

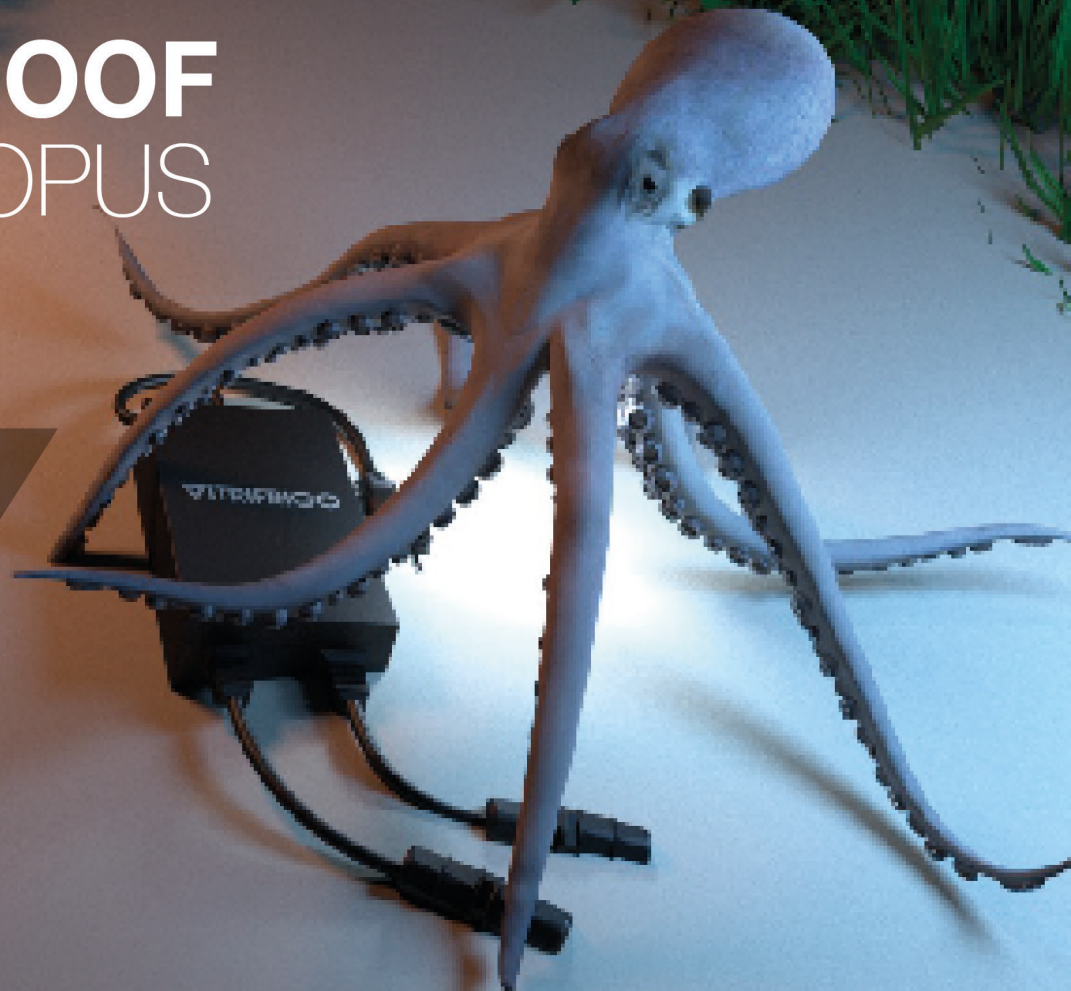
**POWER 150 PRESENTATION**



# SO WATERPROOF EVEN THE OCTOPUS APPROVES



**FULL PROTECTION**  
HIGH EFFICIENCY  
ZERO NOISE







## POWER PACK 150



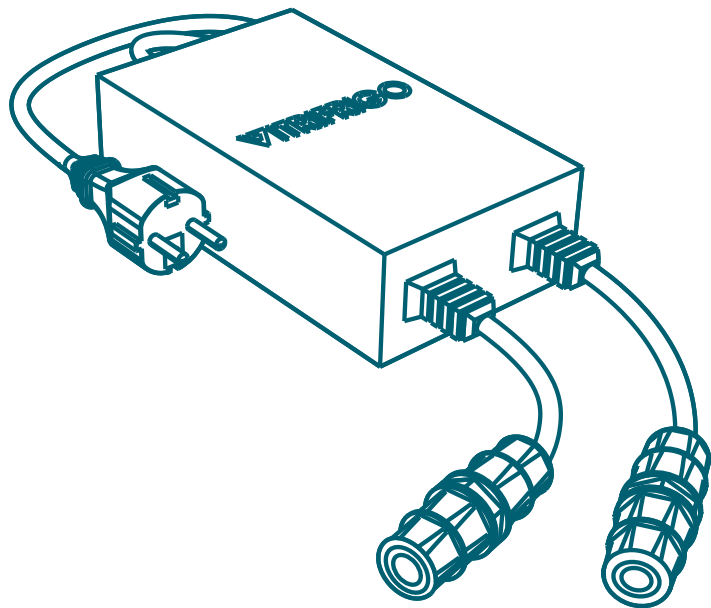
The **universal 24VDC/150W 115/230 VAC power supply** allows efficient use of all Vitrifrigo direct current products.

It automatically converts 115/230 Vac 50/60Hz mains voltage into a powerful 24Vdc power supply for Vitrifrigo devices.

Thanks to its automatic switching, it **smoothly transitions** from alternating current (AC) mains voltage to battery direct current (DC).

This power supply is equipped with an electronic protection circuit against current overloads, **ensuring safety and reliability** in powering devices.





## FEATURES

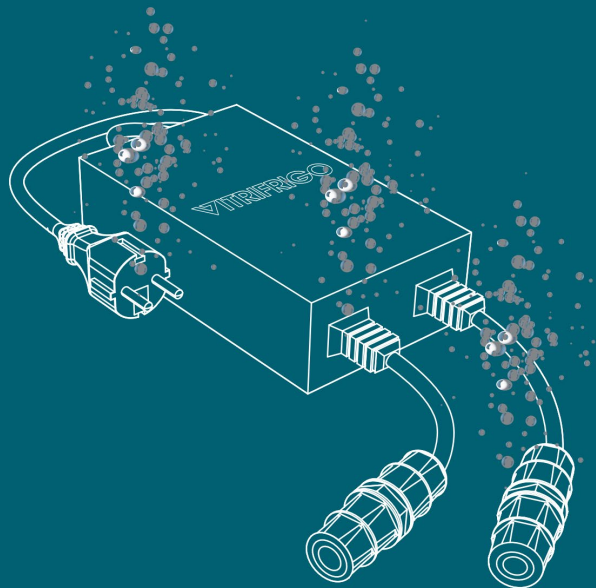
- Internal circuit protected against water infiltration through resin potting.
- Marine-grade connection terminals for protection against water ingress.
- Dedicated bracket for direct mounting.
- High-efficiency internal circuit (PFC / LLC) with no cooling fan — completely silent operation.
- Self-regulating operation for input voltages between 100–240 Vac and 50–60Hz. Fixed output voltage: 24Vdc, 150W.
- Option to connect a backup battery in case of no mains power connection.





## BENEFITS

- **HIGH PERFORMANCE**  
High-efficiency internal circuit
- **ZERO NOISE**  
No cooling fan required
- **TOTAL PROTECTION**  
Watertight marine connectors





# 3.

**PRODUCT INFO**



SWITCHING POWER SUPPLY



POWER PACK 150

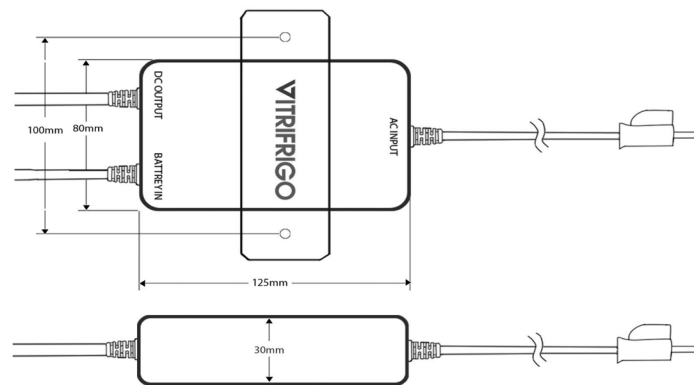
**Model:** S-150-24

**Net weight:** 0.7 Kg

**Dimensions:** 234 x 118 x 55 mm

**In-put :** 100-240Vac 50/60Hz

**Out-put:** 24Vdc 150W - SELV2







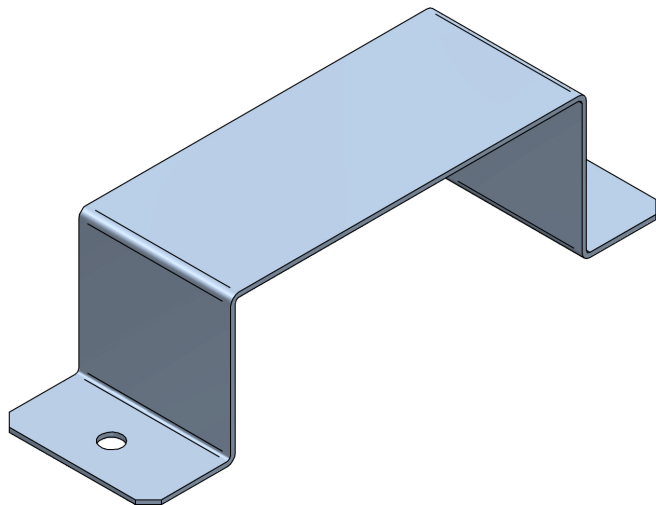
SWITCHING POWER SUPPLY



VF CODE	COMPATIBILITY	PRICE
7806-0029	<ul style="list-style-type: none"> <li>• Serie DW (no IM)</li> <li>• Serie C OCX2</li> <li>• Serie C CHR</li> <li>• Serie SLIM</li> <li>• Compact Drawers</li> <li>• Top Loading</li> </ul>	PLEASE CONTACT VF

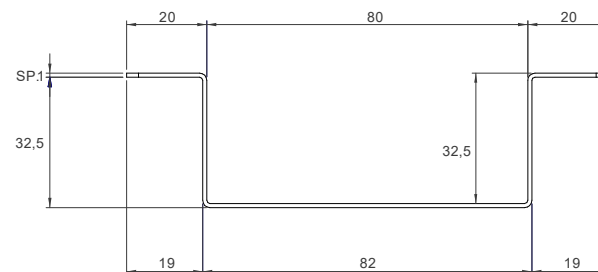
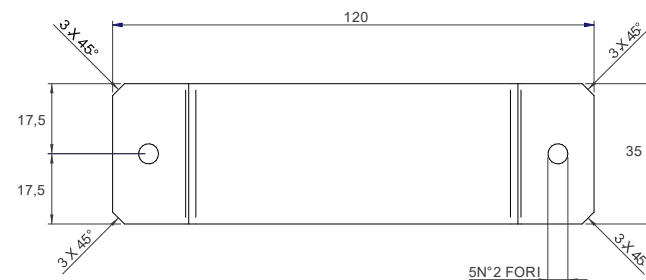
**POWER PACK 150**





## STAINLESS STEEL BRACKET

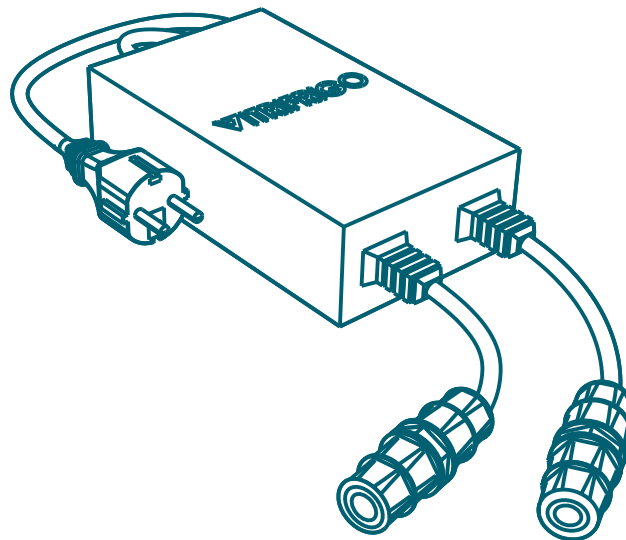
Black-painted **stainless steel** bracket for mounting the power supply on the back panel







EUROPE



**POWER PACK 150 POWER SUPPLY  
WITH EUROPEAN PLUG**





# 4.

**POWER150 vs POWER300  
COMPARISON**





**NEW**



**Characteristics:**

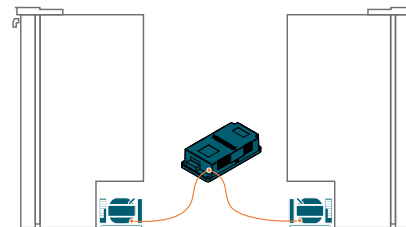
- No fan
- Internal potting for protection against water and dust
- High-efficiency electronic circuit
- Automatic voltage switching
- Marine connectors

**Characteristics:**

- High output power: 300W
- Direct connection to power terminals
- Available with multiple plug types
- Possibility of multiple product connection\*



*\*Up to two fridge units  
as specified in the table on Slide 14*



**POWER PACK 150**

**POWER PACK 300**



# 5.

**SPECIFICATIONS & USP**





- **List prices**

Please contact your Vitrifrigo sales representative to obtain a quote.

- **Availability**

Available starting from January 2026.

- **Documentation**

Updated and available, included within the packaging

- **Packaging**







Waterproof



High Performance



Zero noise and  
heat dissipation



**GRAZIE PER L'ATTENZIONE**  
*THANKS FOR YOUR ATTENTION*

[marketing@vitrifrigo.com](mailto:marketing@vitrifrigo.com)  
[www.vitrifrigo.com](http://www.vitrifrigo.com)

