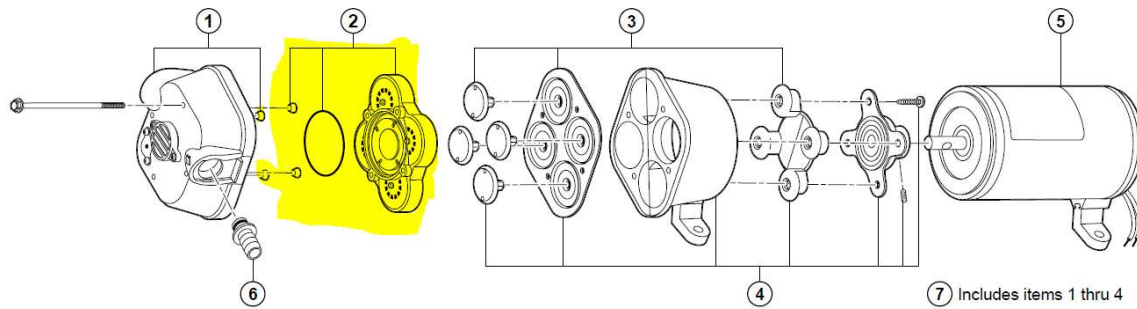


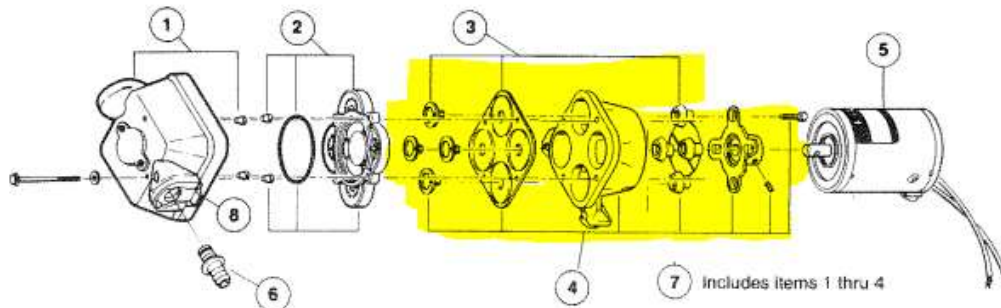
## Pump R4105 343 A Spare Parts



KEY#	DESCRIPTION	4105-512	4105-524
0	Service Kit*	20409-043	20409-043
1	Upper Housing With Clips	20404-004	20404-004
2	Check Valve Assembly	20407-030	20407-030
3	Diaphragm Assembly (includes screws)	20403-040	20403-040
4	Lower Housing Assembly	20419-001	20419-001
5	Motors	02019-025A	02049-025A
	Motors CE Models	R2019-025A	R2049-025A
7	Pump Head Assembly	20406-004	20406-004

\*Service Kit includes #2, #3, side clips and drive cam assembly.

Penguin recommend replacing check valve as a standard service part. Part no 2 this is fairly simple operation for a customer to undertake.



KEY#	DESCRIPTION	4105-512	4105-524
0	Service Kit*	20409-043	20409-043
1	Upper Housing With Clips	20404-004	20404-004
2	Check Valve Assembly	20407-030	20407-030
3	Diaphragm Assembly (includes screws)	20403-040	20403-040
4	Lower Housing Assembly	20419-001	20419-001
5	Motors	02019-025A	02049-025A
	Motors CE Models	R2019-025A	R2049-025A
7	Pump Head Assembly	20406-004	20406-004

\*Service Kit includes #2, #3, side clips and drive cam assembly.

Replacing the Diaphragm assembly is more complicated and requires a certain amount of knowledge of the pump. If you replace Part No 3 we recommend you replace 2 at the same time.