

## Frese PEX Union with Integrated Support Sleeve

### Application

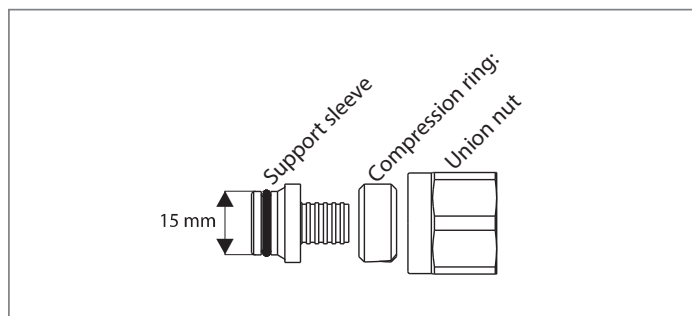
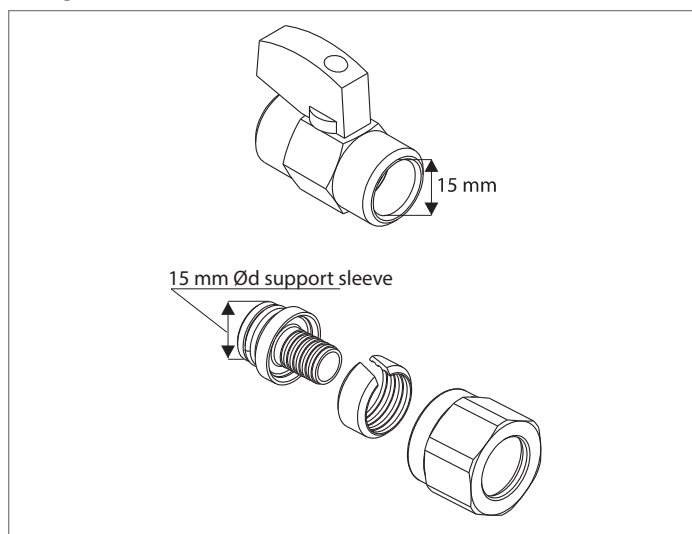
The PEX union with integrated support sleeve is used when joining PEX pipes to ball valves or threaded male fittings.

PEX unions can be used in domestic water, cooling and heating systems.

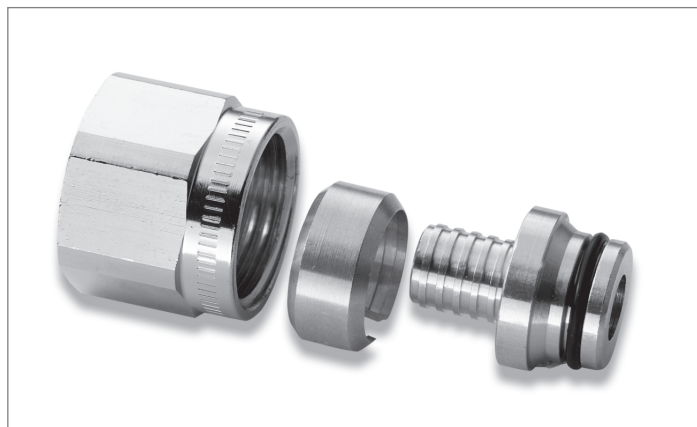
### Connection

PEX unions may be connected to the following valves and fittings:

Frese ball valves with 1/2" pipe thread or other manufacturer's connectors with a 15 mm hole for copper pipe in the threaded male fitting, such as threaded adapters, manifolds, fittings, valves and ball valves.



Frese A/S assumes no responsibility for errors, if any, in catalogues, brochures, and other printed matter. Frese A/S reserves the right to modify its products without prior notice, including already ordered products, if this does not alter existing specifications. All registered trademarks in this material are the property of Frese A/S. All rights reserved.



### Technical Data

<b>Materials:</b>	
<b>Union nut:</b>	Brass
<b>Compression ring:</b>	Brass
<b>Integrated support sleeve:</b>	Dezincification resistant brass
<b>O-rings:</b>	EPDM, rubber
<b>Pressure class:</b>	PN10
<b>Temperature:</b>	Max. 100°C
<b>Packaging:</b>	Practical plastic rail with 10 units

#### Chrome plated PEX union

Frese no.	Dim. PEX pipe	Ød sup. sleeve
31-2121	DN15 to Ø12x2.0 mm	15 mm
31-2131	DN15 to Ø15x2.5 mm	15 mm
31-2141	DN15 to Ø16x2.0 mm	15 mm

#### Plain brass PEX union

Frese no.	Dim. PEX pipe	Ød sup. sleeve
31-2021	DN15 to Ø12x2.0 mm	15 mm
31-2031	DN15 to Ø15x2.5 mm	15 mm
31-2041	DN15 to Ø16x2.0 mm	15 mm

#### Installation instructions:

Check that the inside and outside dimensions of the pipe and PEX union match. Cut off the PEX pipe at a right angle and check that the end is free of burrs and damage.

**Connection:** To valves, fittings and manifolds. Fit the union nut, compression ring and support sleeve to the PEX pipe. Then press the end of the support sleeve fitted with an O-ring into the threaded male fitting with a 15 mm hole for copper pipe.

**Tightening:** The union nut should be drawn tight and then turned a further 1½ to 2 turns. Check that the connection is sealed, and tighten further if necessary.

Frese A/S  
Sorøvej 8  
DK-4200 Slagelse  
Tel: +45 5856 0000  
Fax +45 5856 0091  
info@frese.dk

**Frese**