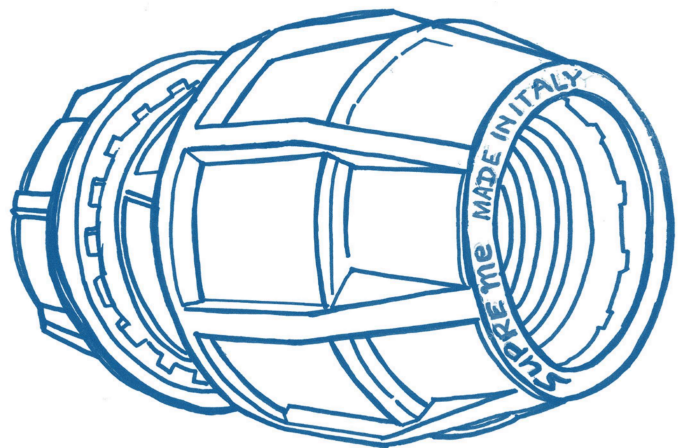


Compression Fittings S16

Raccordi a compressione S16



suprem  fittings

Applications

Designed for an easy and reliable joining of PE pipes, PN 16 compression fittings find the major applications in water Supply, sport plants qualified irrigation especially in golf courses and house connections. Range: d. 16-110 mm, all the common item for piping application.

Benefits

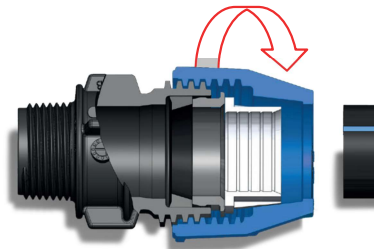
- **INNOVATIVE:** "Poseidon" Balance Sealing Systems
- **SAFE:** High mechanical and hydraulic resistance and thermal stability
- **SIMPLE & FAST:** Easy and fast assembly, without removing the nut from the body of the fitting and without any particular preparation of the pipe

"POSEIDON" BALANCE SEALING SYSTEM

Benefits and action trough the four assembly steps

SIMPLE & FAST

in any assembly and use condition, with no preparation of the pipe, without removing the nut from the body.



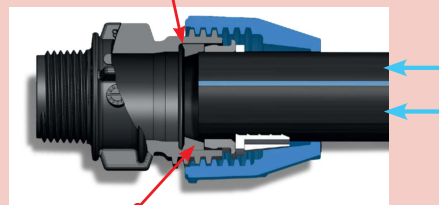
Radial gasket site in the fitting body

1.

Pipe preparation and nut unscrew

CLEVER

The two opposite lips of the gasket make a DOUBLE SEALING ACTION towards the radial body site and towards a large contact with the pipe surface.



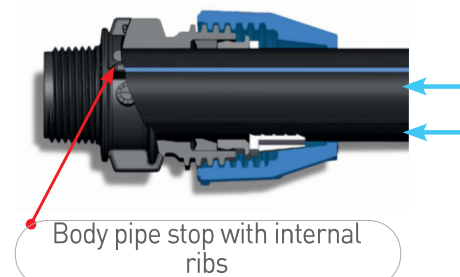
Conical gasket: two opposite lips

2.

Pipe insertion up to the first pipe stop

DYNAMIC & RELIABLE

The innovative balanced hydraulic sealing is aided by a Plus. The pipe, after completing the assembly, doesn't reach directly the final body pipe stop, but remains lightly raised from the pipe stop itself thanks to the internal ribs of the body: this make the balance sealing system perfectly dynamic.



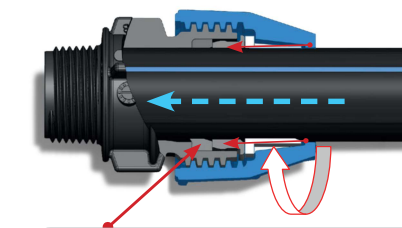
Body pipe stop with internal ribs

3.

Pipe insertion up to the body pipe stop

INNOVATIVE & SAFE

The gasket deeply places in its site and moves radially towards the pipe wall. A perfect sealing is obtained as the system is able to balance pipe defects



The gasket places deeply in its site and moves radially towards the pipe

4.

Screwing the nut

FEATURES OF PN 16 COMPRESSION FITTINGS

S 16 compression fittings for pressure piping applications are characterized by the Innovative Balance Sealing System Poseidon (pat pending): thanks to the new technical design it is possible to balance the sealing action towards the pipe through the different tightening of the nut. This leads to the maximum safety in all the possible conditions of use and quality of the pipe, keeping the basic features of easy and fast assembly without any particular preparation of the pipe. **Product range:** d.16-110mm, all the common items for piping applications.

MAIN APPLICATIONS

Water supply, house connection and water treatment plants, sport plants irrigation and gardening, agriculture and horticulture irrigation.

TECHNICAL SPECIFICATIONS

Materials: top quality raw materials are used, this makes the S 16 fittings highly resistant and reliable in time, suitable for drinking water and environment compatible.

Body, nut, thrust ring: virgin polypropylene (PP-B), high mechanical resistance and thermal stability in course of time. For coloured nuts, top UV resistant master-batch are used (grade 8- ASTM D2565)

Grip ring: copolymer polyacetal resin (POM), white colour

Conical gasket: rubber NBR or EPDM, hardness 70sh, black colour

Reinforcement ring: only for female threads $\geq 1\frac{1}{2}$, stainless steel AISI 430

STANDARDS

Dimensions, features and functional tests: UNI 9561, EN712 - EN713 - EN715 - EN911, ISO3458 - ISO3459 - ISO3501 - ISO3503 - ISO14236, ISO17885, DIN8076.3, AS/NZS 4129, BRL K534-03

Pipe compatibility, PE-HD (PE63-80-100), PE-LD, PEX-a: UNI10910, EN12201-1, ISO4427, DIN8072 - DIN8074, AS/NZS4130, BS6572 - BS6730, UNI7990

Sealing threads (male and female): EN10226-1 (ex ISO7/1), DIN2999.1, BS21, AS/NZS1722.1

Flange: ISO7005, DIN2501 - DIN8063.

WORKING TEMPERATURE -10 / +45°C

NOMINAL PRESSURE (PN) AND PRODUCT APPROVALS

S 16 fittings are designed and suitable to be used at PN16 pressure rate; fittings are tested and certified by major international approval institutions, such as DVGW (Germany), IIP (Italy), WM (Australia), Kiwa (Holland) Wras (UK), Acs (France), Sabs (Rsa), Eta (Denmark).

WORKING PRESSURE AND TEMPERATURE

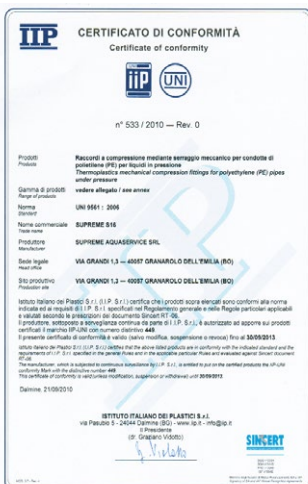
temperatura C°	-10 /+25°C	+26/+35 °C	+36/+45 °C
PN	16	12,5	10
PN	12,5	10	8
PN	10	8	6

DRINKING WATER

Poseidon fittings are suitable to be in contact with potable water, according to the main international sanitary requirements, such as: Circolare n.102 del 2.12.1978, DM 21.3.1973 e DM174 del 6.4.2004 (Italy); Mitteilungen aus dem Bundesgesundheitsamt 108-109 mitteilung - KTW-D2 (Germany); Kiwa-ATA (Holland); AS4020 (Australia), FDA (USA), Bs6920 (UK).

CERTIFICATIONS

Italy



United Kingdom



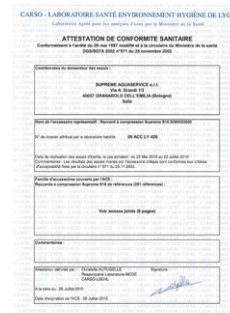
South Africa



Australia



France



Germany



Holland



PRODUCT RANGE



90° REDUCING TEE



90° TEE



90° MALE TEE



90° FEMALE TEE



COUPLING



**REPARATION
COUPLING**



**REDUCING
COUPLING**



**MALE
ADAPTOR**



**FEMALE
ADAPTOR**



END LINE CAP



90° ELBOW



**90° FEMALE
ELBOW**



**90° MALE
ELBOW**



**FLANGED
JOINT**

Monocomponent
Sealing LOCTITE as
well as PTFE Tape-
roll are strongly
recommended



STOP COCK



**90° ELBOW WITH
FEMALE OUTLET AT 90°**



WALL PLATE ELBOW



SWIVEL FEMALE ADAPTOR



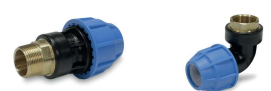
PE/UNIVERSAL



UNIVERSAL/UNIVERSAL



PE TO COPPER FITTINGS



FITTINGS WITH BRASS INSERT

In order to complete the proposal, the following products are also available in our range, all these are certified by the main international approval bodies:

- Mechanical Clamp Saddles from size 25 to size 315 mm pipes, female threaded outlet from 1/2" to 4".
- Complete range of PE100 fittings and machines for Butt Fusion and Electro-welding.
- Complete range of PVC Fittings, ball and butterfly Valves for pressure application.

SUPREME PRESENCE IN THE WORLD



Quapus SA srl

Sales & Marketing

Via F.lli Bandiera, 4
40055, VILLANOVA DI CASTENASO - BO - ITALY
Tel./fax. +39 051 6053557

Giancarlo Costa: sales@supreme-systems.net

Marcello Vannini: marcello@supreme-systems.net

Giovanni Costa: giovanni@supreme-systems.net

Logistics & Customer Service

Pratoverde srl

Via San Pelagio 2
35020 DUE CARRARE - PD - ITALY
Tel. +39 049 9128128
Fax. +39 049 9128129

www.supremefittings.com
info@supremefittings.com