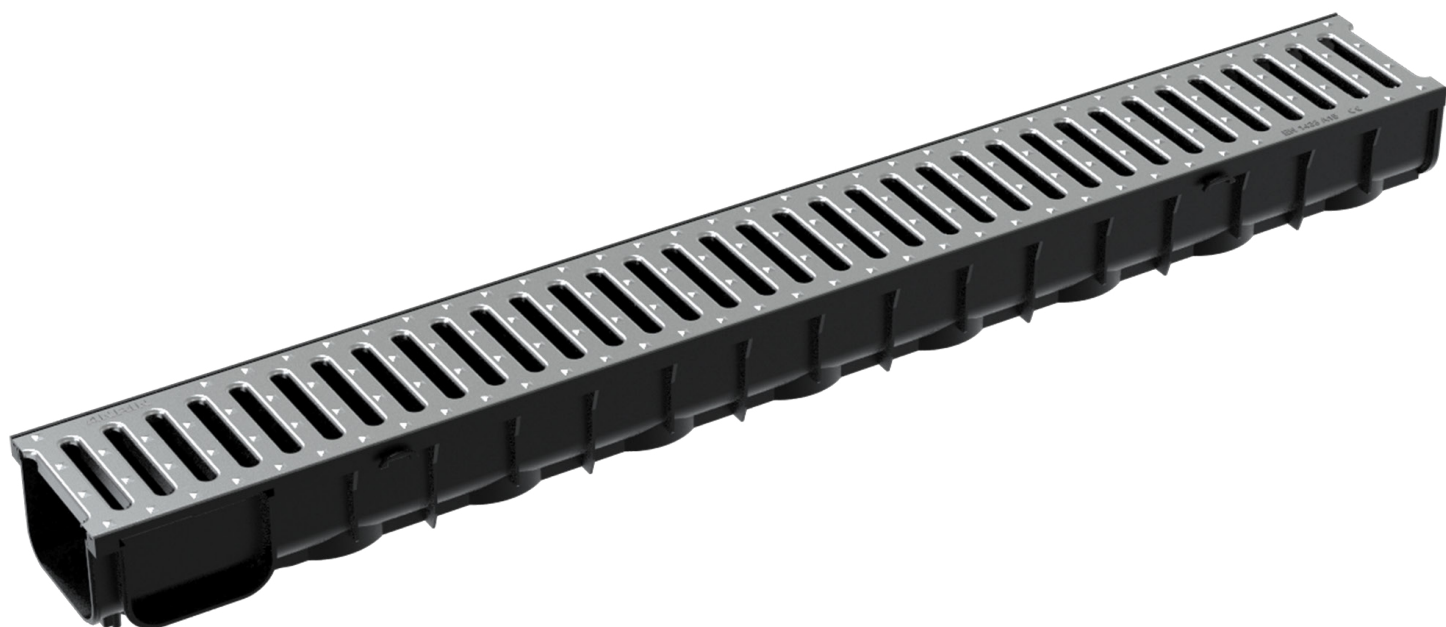


# ANRIN

LEADING WATER



Technical  
data sheet

SELF PP  
Plastic Channels

# Technical data sheet

## ANRIN SELF-PP Plastic Channels

### Product specifications

Product specifications		SELF PP Channel 080
Material		Plastic
Length		100 cm
Width		12.1 cm
Height		8.4 cm
Weight		1.6 kg - 1.8 kg
Nominal width		100 mm
Slope type		Constant invert
Fastening		Locking mechanism
Load capacity		A15
Cover gratings		Plastic slotted grating A15, Galvanised steel slotted grating A15

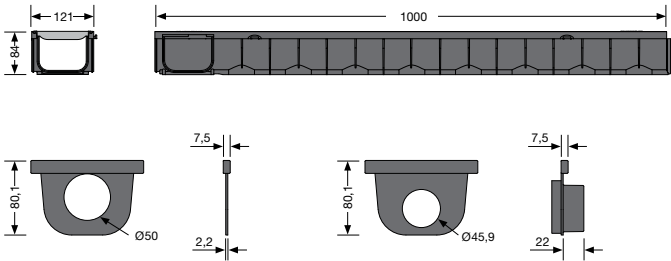
Product specifications		SELF PP EVO 0100 / 0150
Material		Plastic
Length		100 cm
Width		13.1 cm
Height		9.8 cm / 14.8 cm
Weight		2.9 kg - 8.7 kg
Nominal width		100 mm
Slope type		Constant invert
Fastening		Screw fastening
Load capacity		A 15 - C250
Cover gratings		Steel slotted grating cl. A15, Polyamide plastic grating B125, cast iron grating Oval Grip C250

### Material properties

Physical properties of polypropylene		Chemical properties of polypropylene
High resistance to breaking		Resistant to road salt
High impact strength		Resistant to acids
Thermally stable from -20 °C to +95 °C		Resistant to alkalis and most organic solvents
Elastic modulus 1300 to 1800 N/mm <sup>2</sup>		High UV stability
Density 0.895 to 0.92 g/cm <sup>3</sup>		No emissions into the groundwater

Technical data sheet  
ANRIN SELF-PP Plastic Channels

Channel dimensions SELF PP channel 080



# Technical data sheet

## ANRIN SELF-PP Plastic Channels

### SELF PP Channel 080

Article no.	EAN	Designation	Length cm	Width cm	Height cm	Weight kg
11081000	4026857031789	SELF PP channel 080 with plastic slotted grating A15	100	12.1	8.4	1.6
11082000	4026857031796	SELF PP channel 080 with galvanised steel slotted grating A15	100	12.1	8.4	1.8
11087700	4026857031802	SELF PP End wall pair 080 for channel tongue and groove				
11088700	4026857031819	SELF PP Adapter with screws for linking with DN 100 pipe connections				

### SELF PP EVO 0100

Article no.	EAN	Designation	Length cm	Width cm	Height cm	Weight kg
11103000	4026857032489	SELF PP EVO 0100 with steel slotted grating A15	100	13.1	9.8	2.9
11104000	4026857032496	SELF PP EVO 0100 with polyamide plastic grating B125	100	13.1	9.8	3.2
11105000	4026857032502	SELF PP EVO 0100 with cast iron grating Oval Grip C250	100	13.1	9.8	8.2
11107000	4026857032519	SELF PP EVO 0100 End wall set (DN 110)		13.1	9.8	0.2

### SELF PP EVO 0150

Article no.	EAN	Designation	Length cm	Width cm	Height cm	Weight kg
11503000	4026857032526	SELF PP EVO 0150 with steel slotted grating A15	100	13.1	14.8	3.4
11504000	4026857032533	SELF PP EVO 0150 with polyamide plastic grating B125	100	13.1	14.8	3.7
11505000	4026857032540	SELF PP EVO 0150 with cast iron grating Oval Grip C250	100	13.1	14.8	8.7
11507000	4026857032557	SELF PP EVO 0150 End wall set (DN 110)		13.1	14.8	0.2

Note: Sump units for SELF PP EVO 0100 / 0150 are available on request!

# Technical data sheet

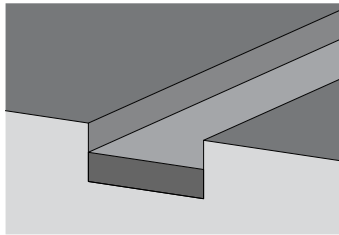
## ANRIN SELF-PP Plastic Channels

### Installation instructions

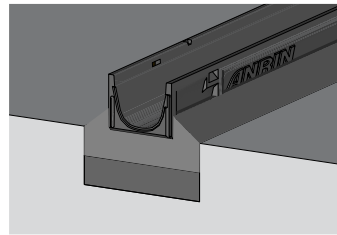
The following installation guidelines are schematic representations. These are provided as examples and are non-binding. The information provided here is based on our long-term experience in excavation and road construction as well as the state-of-the-art technology.

Despite this, designers and planners are always obligated to check the products and the installation instructions for their appropriateness. The example details are simplified recommendations for execution. Constructions are to be re-created on a project-specific basis.

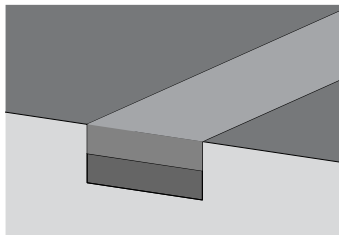
Important: Insert gratings for the installation.



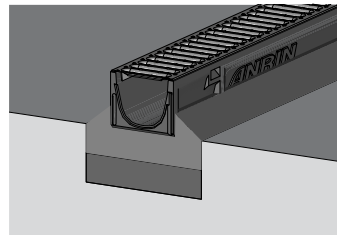
1. Dig out the trench. Fill in and pre-condense the base course.



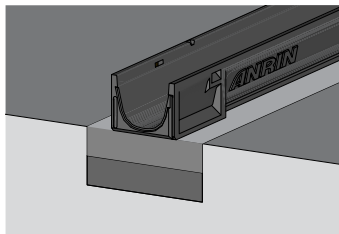
2. Connect pipe connections to the pipeline and align the components evenly. Fill concrete bed.



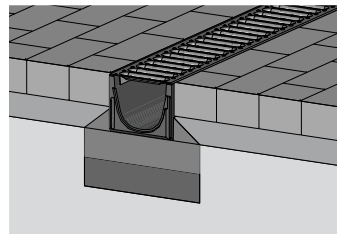
3. Fill concrete, 3 parts sand + 1 part water + 1 part cement, into the base of the trench.



4. Place cover gratings on the channels.



5. Position channel string, sump unit and end cap on the concrete bed.



6. Install paving. The layer should end 2 to 5 mm higher than the cover grating.



ANRIN GmbH  
Siemensstr. 1  
59609 Anröchte  
Germany

+49 (0) 29 47.97 81-0  
[www.anrin.com](http://www.anrin.com)  
[info@anrin.com](mailto:info@anrin.com)