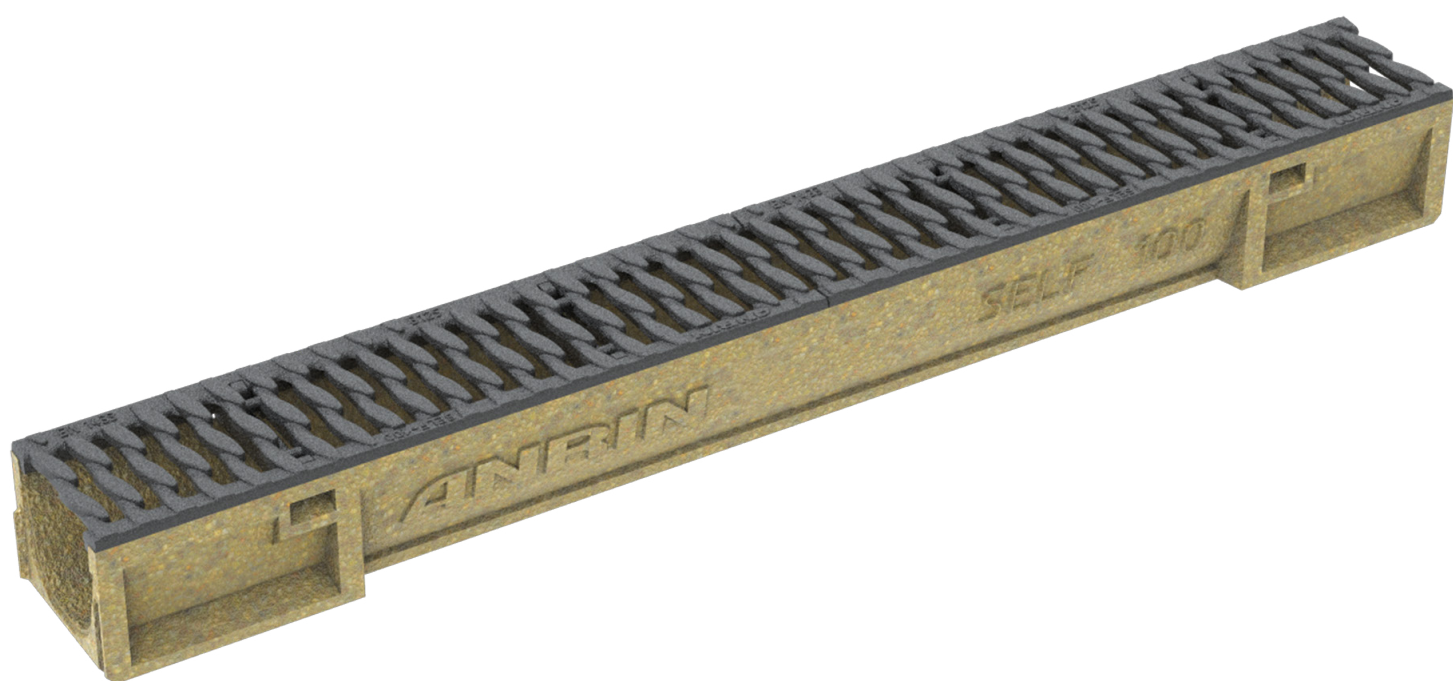


ANRIN

LEADING WATER



Technical
data sheet

SELF-100

Technical data sheet

ANRIN SELF drainage channels SELF-100

Product specifications

Product specifications	SELF-100	Sump unit
Material	Resin concrete	Resin concrete
Length	50 cm and 100 cm	50 cm
Width	12 cm	13.1 cm
Height	10 cm	40 cm
Weight	4.5 / 8.0 kg	15.5 kg
Nominal width	10 cm	10 cm
Slope type	Constant invert	Constant invert
Joint type	UNILINK® joint	UNILINK® joint
Fastening	Locking mechanism	Locking mechanism
Load capacity	Slotted steel grating cl. A15, Stainless steel longitudinal profile grating cl. B125 Galvanised mesh grating cl. B125, Slotted cast iron grating, cl. B125, slotted plastic grating, cl. B125	
Cover gratings	Freely selectable	Freely selectable

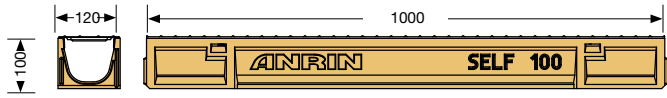
Material properties

Channel / component body	
Polymer concrete	polyester resin-based with mineral aggregates, additives
Compressive strength	≥ 90 N/mm ²
Bending tensile strength	≥ 22 N/mm ²
Modulus of elasticity	ca. 25 kN/mm ²
Density	2.1 – 2.3 g/dm ³
Heat resistance	100° C (permanent loading)
Frost resistance	- 50° C
Water penetration depth	0 mm
Water absorption	0.05 %
Channel cover	
Cover gratings	Slotted steel grating cl. A15, Stainless steel longitudinal profile grating cl. B125 Galvanised mesh grating cl. B125, Slotted cast iron grating, cl. B125, slotted plastic grating, cl. B125

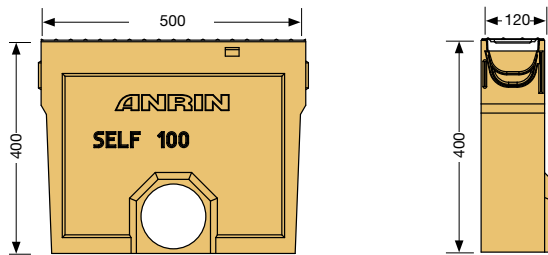
Technical data sheet

ANRIN SELF drainage channels SELF-100

Channel dimensions



Accessories dimensions



Technical data sheet

ANRIN SELF drainage channels SELF-100

Cover gratings



Slotted steel

galvanised steel, stainless steel
Length: 50 cm, 100 cm

Load capacity:
A15



Longitudinal profile grating

stainless steel
Length: 50 cm, 100 cm

Load capacity:
B125



Mesh grating

galvanised steel
Length: 50 cm, 100 cm

Load capacity:
B125



Slotted grating OvalGrip Design

cast-iron
Length: 50 cm,

Load capacity:
B125



Slotted grating OvalGrip Design

plastic (black)
Length: 50 cm

Load capacity:
B125

Technical data sheet

ANRIN SELF drainage channels SELF-100

SELF-100 with galvanised grating and locking mechanism

Article no.	EAN	Designation	Length cm	Width cm	Height cm	Weight kg
07291000	4026857021308	SELF-100 Channel***	100	12.0	10.0	8.0
07293000	4026857022589	SELF-100 Channel with poured pipe socket***	100	12.0	10.0	7.6
07291050	4026857021322	SELF-100 Channel**	50	12.0	10.0	4.5
07296000	4026857021360	SELF Sump unit	50	12.0	40.0	15.5

SELF-100 with stainless steel grating and locking mecha-

Article no.	EAN	Designation	Length cm	Width cm	Height cm	Weight kg
07291100	4026857023999	SELF-100 Channel***	100	12.0	10.0	8.0
07293100	4026857024019	SELF-100 Channel with poured pipe socket***	100	12.0	10.0	7.6
07291150	4026857024002	SELF-100 Channel**	50	12.0	10.0	4.5
07296100	4026857024026	SELF Sump unit	50	12.0	40.0	15.5

SELF-100 with stainless steel longitudinal profile grating and locking me-

Article no.	EAN	Designation	Length cm	Width cm	Height cm	Weight kg
07791000	4026857031901	SELF-100 Channel***	100	12.0	10.0	8.0
07793000	4026857031918	SELF-100 Channel with poured pipe socket***	100	12.0	10.0	7.6
07791050	4026857031925	SELF-100 Channel**	50	12.0	10.0	4.5
07796000	4026857031932	SELF Sump unit	50	12.0	40.0	15.5

SELF-100 with galvanised mesh grating and locking mechanism

Article no.	EAN	Designation	Length cm	Width cm	Height cm	Weight kg
07691000	4026857030577	SELF-100 Channel***	100	12.0	10.0	11.4
07693000	4026857030584	SELF-100 Channel with poured pipe socket***	100	12.0	10.0	11.0
07691050	4026857030560	SELF-100 Channel**	50	12.0	10.0	4.9
07696000	4026857030591	SELF Sump unit	50	12.0	40.0	17.5

** Channel with sidewise perforations for the connection of t-junctions, elbow joints and cross-over joints
 *** Every 2nd channel with perforation DA/OD 110 for vertical outlet

Technical data sheet

ANRIN SELF drainage channels SELF-100

SELF-100 with slotted cast iron and locking mechanism

Article no.	EAN	Designation	Length cm	Width cm	Height cm	Weight kg
07392000	4026857029861	SELF-100 Channel***	100	12.0	10.0	11.4
07394000	4026857029878	SELF-100 Channel with poured pipe socket***	100	12.0	10.0	11.0
07392050	4026857029885	SELF-100 Channel**	50	12.0	10.0	4.9
07296300	4026857029977	SELF Sump unit	50	12.0	40.0	17.5

SELF-100 with slotted plastic grating OvalGrip and locking mechanism

Article no.	EAN	Designation	Length cm	Width cm	Height cm	Weight kg
07591000	4026857026396	SELF-100 Channel***	100	12.0	10.0	8.0
07593000	4026857026402	SELF-100 Channel with poured pipe socket***	100	12.0	10.0	7.6
07591050	4026857026419	SELF-100 Channel**	50	12.0	10.0	4.5
07596000	4026857026426	SELF Sump unit	50	12.0	40.0	15.5

** Channel with sidewise perforations for the connection of t-junctions, elbow joints and cross-over joints

*** Every 2nd channel with perforation DA/OD 110 for vertical outlet

SELF-100 Accessories

Article no.	EAN	Designation	Length cm	Width cm	Height cm	Weight kg
07297100	4026857021384	SELF 100 Closed end cap				0.4
07298100	4026857021391	SELF 100 End cap with pipe socket				0.8
01006600	4026857000525	Foul air trap DA/OD 110				1.5
01006700	4026857026594	Foul air trap with leaves sieve				0.2
01006800	4026857000549	Pipe socket DA/OD 110				0.2

Technical data sheet

ANRIN SELF drainage channels

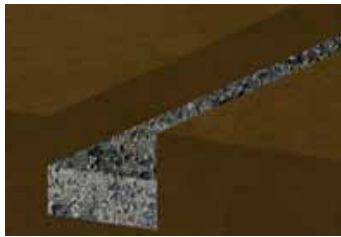
Installation instructions

The following installation guidelines are schematic representations. These are provided as examples and are non-binding. The information provided here is based on our long-term experience in excavation and road construction as well as the state-of-the-art technology.

Despite this, designers and planners are always obligated to check the products and the installation instructions for their appropriateness. The example details are simplified recommendations for execution. Constructions are to be re-created on a project-specific basis.

Important: Insert gratings for the installation.

Installation instructions



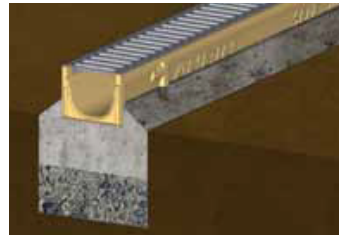
1. Dig out the trench.
Fill in and pre-condense the base course.



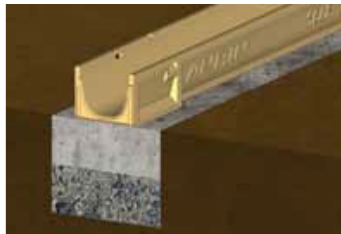
2. Connect pipe connections to the pipeline and align the components evenly.
Fill concrete bed.



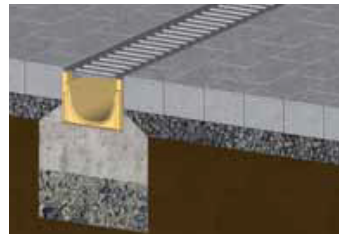
3. Fill concrete, 3 parts sand + 1 part water + 1 part cement, into the base of the trench.



4. Place cover gratings on the channels.



5. Position channel string, sump unit and end cap on the concrete bed.



6. Install paving. The layer should end 2 to 5 mm higher than the cover grating.



ANRIN GmbH
Siemensstr. 1
59609 Anröchte
Germany

+49 (0) 29 47.97 81-0
www.anrin.com
info@anrin.com