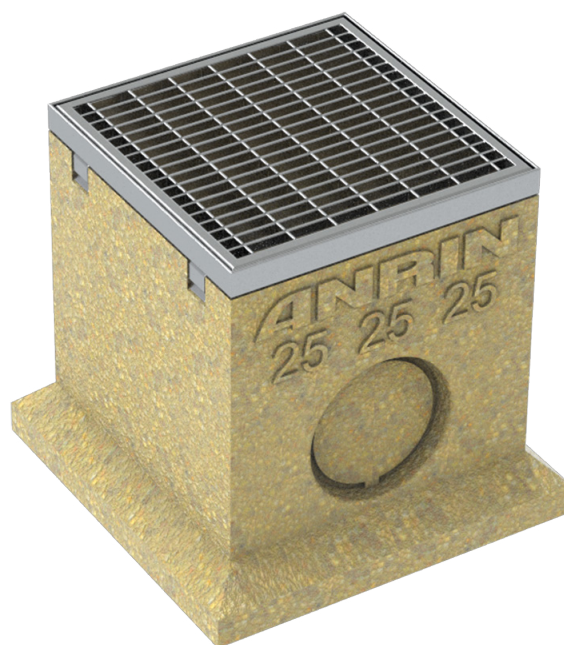
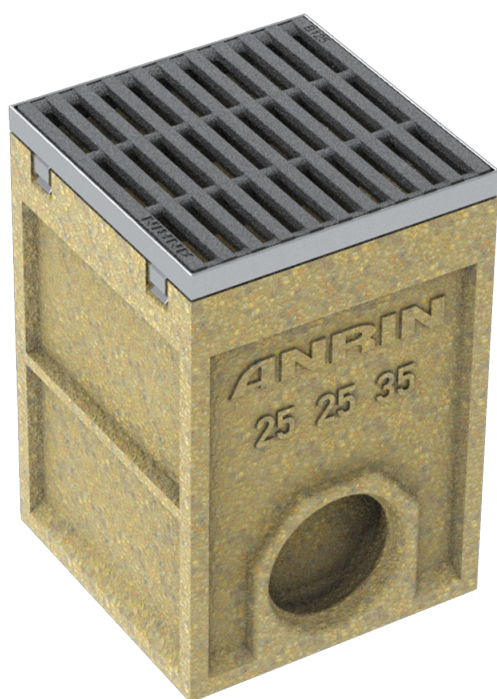


ANRIN

LEADING WATER



Technical
data sheet

SELF yard sump

Technical data sheet

ANRIN SELF yard sump

Product specifications

Product specifications	SELF yard sump	Raising piece
Material	Resin concrete	Resin concrete
Length	25 cm	25 cm
Width	25 cm	25 cm
Height	35 cm / 37 cm	25 cm
Weight	15.4 kg / 19.8 kg	5.8 kg
Drain	DA/OD 110	DA/OD 110
Load capacity	Drivable, cl. B125	Drivable, cl. B125
Cover	Galvanised grating, cast iron grating cl. B125, galvanised mesh grating, stainless steel longitudinal-bar grating	

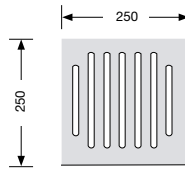
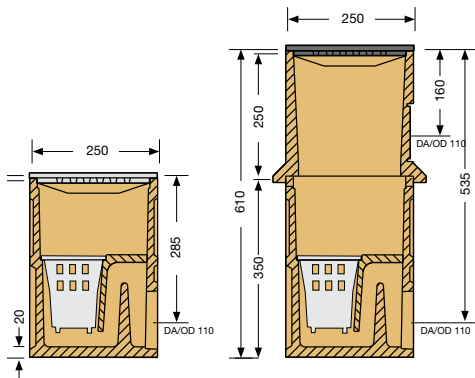
Material properties

Channel / component body	
Polymer concrete	polyester resin-based with mineral aggregates, additives
Compressive strength	$\geq 90 \text{ N/mm}^2$
Bending tensile strength	$\geq 22 \text{ N/mm}^2$
Modulus of elasticity	ca. 25 kN/mm^2
Density	$2.1 - 2.3 \text{ g/dm}^3$
Heat resistance	100° C (permanent loading)
Frost resistance	- 50° C
Water penetration depth	0 mm
Water absorption	0,05 %

Technical data sheet

ANRIN SELF yard sump

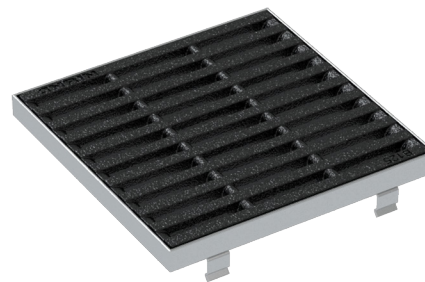
Dimensions



Cover gratings



Slotted grating
Material: galvanised steel
Length: 25 cm
Load class: **A15**



Cast iron grating
Material: cast-iron (cataphoretic dip coating)
Length: 25 cm
Load class: **B125**



Longitudinal-bar grating,
Material: stainless steel
Length: 25 cm
Load class: **B125**



Mesh grating
Material: galvanised steel
Length: 25 cm
Load class: **B125**

Technical data sheet

ANRIN SELF yard sump

SELF yard sump

Article no.	EAN	Designation	Length cm	Width cm	Height cm	Weight kg
07012350	4026857007296	SELF Yard sump with galvanised grating	25.0	25.0	35.0	15.4
07012361	4026857029779	Install paving. The layer should end 2 to 5 mm higher than the cover grating.	25.0	25.0	36.0	19.8
07012370	4026857031277	SELF Yard sump with galvanised mesh grating	25.0	25.0	35.0	15.8
07012371	4026857032304	SELF Yard sump with stainless steel frame and integrated stainless steel longitudinal-bar grating	25.0	25.0	35.0	15.8
07012900	4026857010357	SELF Yard sump for increasing the height	25.0	25.0	25.0	5.8

Technical data sheet

ANRIN SELF yard sump

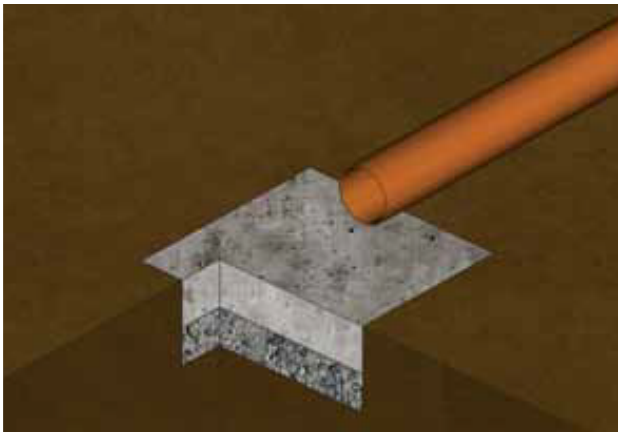
Installation instructions

The following installation guidelines are schematic representations. These are provided as examples and are non-binding. The information provided here is based on our long-term experience in excavation and road construction as well as the state-of-the-art technology.

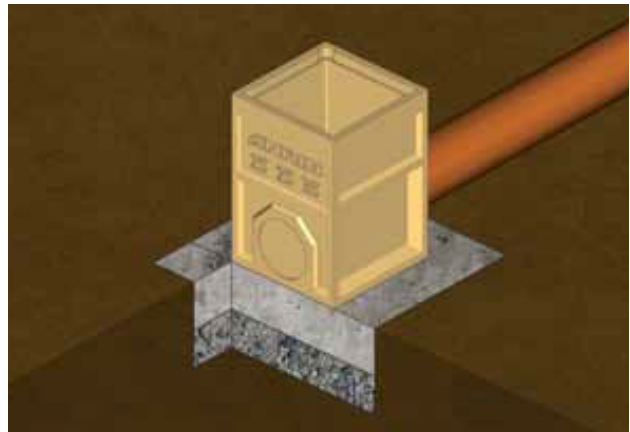
Despite this, designers and planners are always obligated to check the products and the installation instructions for their appropriateness. The example details are simplified recommendations for execution. Constructions are to be re-created on a project-specific basis.

Important: Insert gratings for the installation.

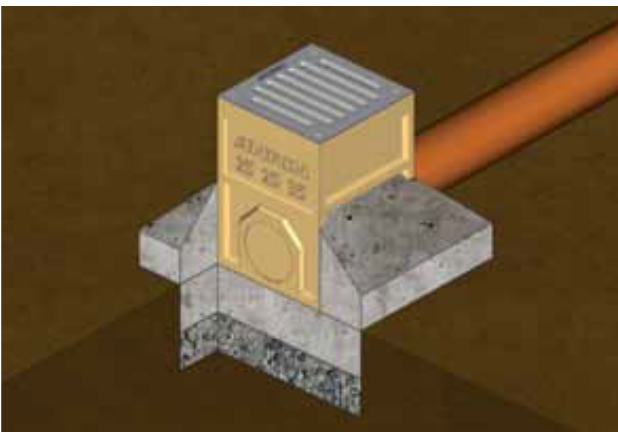
Installation instructions – ANRIN SELF yard sump in paving



Install the pipeline to the yard sump. Excavate the trench and fill in the concrete bed of 3 parts sand + 1 part water + 1 part cement. With the installation of a yard sump with raising piece, observe the corresponding installation depth.



Place the yard sump on the concrete bed and align. Connect the pipeline. With connection of a rainfall pipe, make the per-foration on the raising piece and fit the pipe socket. Connect the fall pipe.



Fill in the concrete bed and raise it at the sides of the sump unit. Fit the cover grating.



Install paving. The layer should end 2 to 5 mm higher than the cover grating.



ANRIN GmbH
Siemensstr. 1
59609 Anröchte
Germany

+49 (0) 29 47.97 81-0
www.anrin.com
info@anrin.com