

ANRIN

LEADING WATER



Technical
data sheet

SELF-ECO

Technical data sheet

ANRIN SELF drainage channels SELF-ECO

Product specifications

Produktspezifikationen	SELF-ECO	Sump unit
Material	Resin concrete	Resin concrete
Length	50 cm and 100 cm	50 cm
Width	12 cm	13.1 cm
Height	8 cm	40 cm
Weight	3.2 / 6.3 kg	15.5 kg
Nominal width	10 cm	10 cm
Slope type	Constant invert	Constant invert
Joint type	UNILINK® joint	UNILINK® joint
Fastening	Locking mechanism	Locking mechanism
Load capacity	Galvanised slotted grating Heelguard cl. A15, Cast iron slotted grating Heelguard cl. B125	
Cover gratings	Freely selectable	Freely selectable

Material properties

Channel / component body	
Polymer concrete	polyester resin-based with mineral aggregates, additives
Compressive strength	≥ 90 N/mm ²
Bending tensile strength	≥ 22 N/mm ²
Modulus of elasticity	ca. 25 kN/mm ²
Density	2.1 – 2.3 g/dm ³
Heat resistance	100° C (permanent loading)
Frost resistance	- 50° C
Water penetration depth	0 mm
Water absorption	0,05 %
Channel cover	
Cover gratings	Galvanised slotted grating Heelguard cl. A15, Cast iron slotted grating Heelguard cl. B125

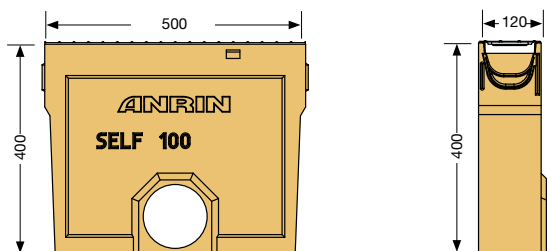
Technical data sheet

ANRIN SELF drainage channels SELF-ECO

Channel dimensions



Accessories dimensions



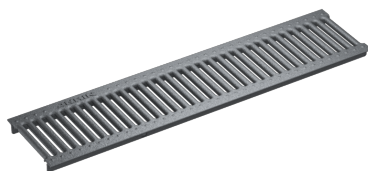
Cover gratings



Slotted grating HEELGUARD

galvanised steel
Length: 50 cm, 100 cm

Load capacity:
A15



Slotted grating HEELGUARD

cast-iron
Length: 50 cm

Load capacity:
B125

Technical data sheet

ANRIN SELF drainage channels SELF-ECO

SELF-ECO with galvanised slotted grating Heelguard

Article no.	EAN	Designation	Length cm	Width cm	Height cm	Weight kg
07541000	4026857029922	SELF-ECO Channel with galvanised slotted grating Heelguard*	100	12.0	8.0	6.3
07541050	4026857029939	SELF-ECO Channel with galvanised slotted grating Heelguard**	50	12.0	8.0	3,2
07296200	4026857029946	SELF Sump unit with galvanised slotted grating Heelguard	50	12.0	40.0	15.5

SELF-ECO with cast iron slotted grating Heelguard

Article no.	EAN	Designation	Length cm	Width cm	Height cm	Weight kg
07542000	4026857029953	SELF-ECO Channel with cast iron slotted grating Heelguard*	100	12.0	8.0	10.3
07542050	4026857029960	SELF-ECO Channel with cast iron slotted grating Heelguard**	50	12.0	8.0	5.2
07296300	4026857029977	SELF Einlaufkasten mit Guss-Stegrost Heelguard	50	12.0	40.0	17.5

* Channel with perforation DA/OD 110 for vertical outlet

** Channel with sidewise perforations for the connection of t-junctions, elbow joints and cross-over joints

SELF-ECO Accessories

Article no.	EAN	Designation	Length cm	Width cm	Height cm	Weight kg
01006600	4026857000525	Foul air trap DA/OD 110				1.5
01006800	4026857000549	Pipe socket DN 100				0.2
07307100	4026857020516	Closed end cap				0.4
07308100	4026857020523	End cap with pipe socket DA/OD 110				0.8

Technical data sheet

ANRIN SELF drainage channels

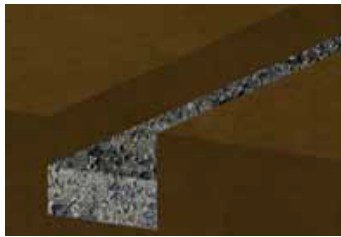
Installation instructions

The following installation guidelines are schematic representations. These are provided as examples and are non-binding. The information provided here is based on our long-term experience in excavation and road construction as well as the state-of-the-art technology.

Despite this, designers and planners are always obligated to check the products and the installation instructions for their appropriateness. The example details are simplified recommendations for execution. Constructions are to be re-created on a project-specific basis.

Important: Insert gratings for the installation.

Installation instructions



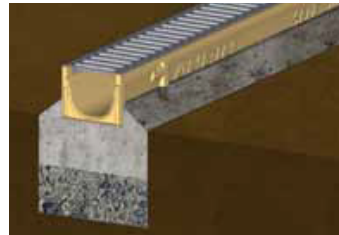
1. Dig out the trench.
Fill in and pre-condense the base course.



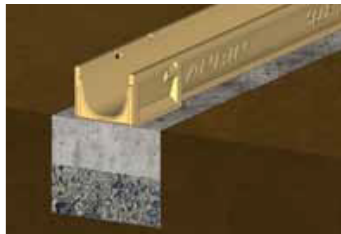
2. Connect pipe connections to the pipeline and align the components evenly.
Fill concrete bed.



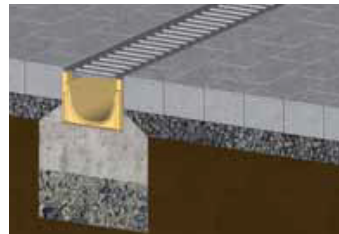
3. Fill concrete, 3 parts sand + 1 part water + 1 part cement, into the base of the trench.



4. Place cover gratings on the channels.



5. Position channel string, sump unit and end cap on the concrete bed.



6. Install paving. The layer should end 2 to 5 mm higher than the cover grating.



ANRIN GmbH
Siemensstr. 1
59609 Anröchte
Germany

+49 (0) 29 47.97 81-0
www.anrin.com
info@anrin.com