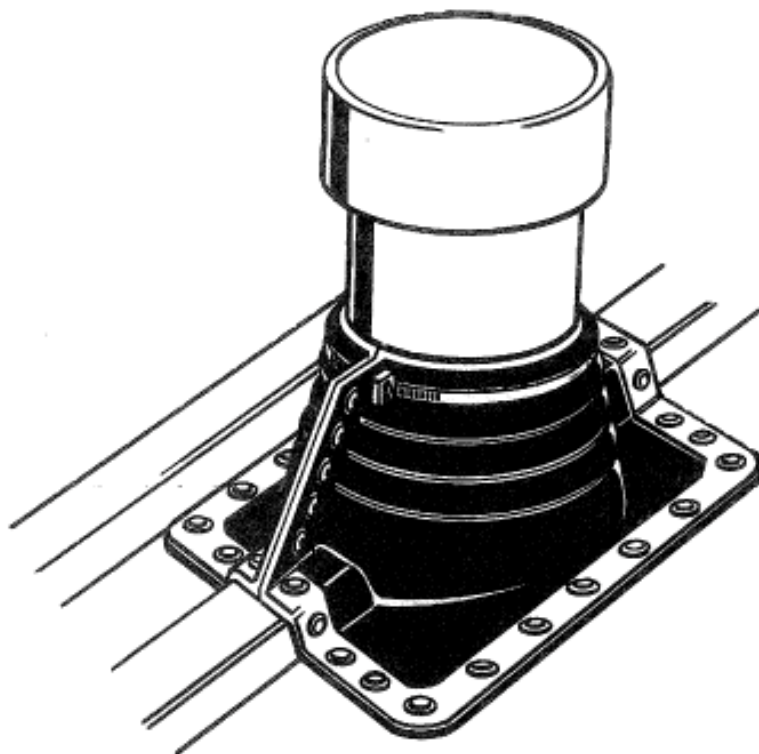
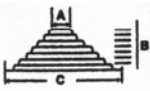
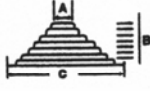
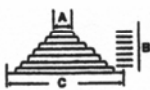


NEW RETROFIT *master flash*®



| Designate pipe size | Compound | Code | Flashing Details | | |
|---------------------|----------|-------|---|-------------------------|------------------|
| 1/2" TO 4" | EPDM | 101RF |  | A-Top opening diameter | 1/2" |
| | SILICONE | 102RF | | B-Cut to suit pipe size | 1/2" TO 4" |
| | | | | C-Base dimension | 8 - 3/16" |
| 4" TO 9 1/4" | EPDM | 201RF |  | A-Top opening diameter | 4" |
| | SILICONE | 202RF | | B-Cut to suit pipe size | 4" TO 9 - 1/4" |
| | | | | C-Base dimension | 14 - 1/4" |
| 9 1/4" TO 16 1/4" | EPDM | 301RF |  | A-Top opening diameter | 9 - 1/4" |
| | SILICONE | 302RF | | B-Cut to suit pipe size | 9-1/4" X 16-1/4" |
| | | | | C-Base dimension | 21 - 1/2" |

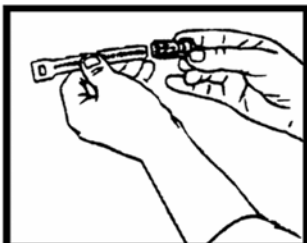
ADAPTERS

| SQUARE TUBING | SIZE | 1/2 x 1/2 | | 3/4 x 3/4 | | 1 x 1 | | 2 x 2 | | 3 x 3 | | 4 x 4 | |
|---------------|---------|---------------------|----------------------|---------------------|---------------------|-------------|--------------|-------------|---------------------|-------------|--|-------|------|
| | ADAPTER | MPA* | | MPA* | | MPA* | | MPA* | | D103 | | D104 | |
| ANGLE IRONS | SIZE | 1-1/2 x 1-1/2 x 1/4 | 1-3/8 x 1-3/8 x 3/16 | 1-3/4 x 1-3/4 x 1/8 | 2-1/2 x 2-1/2 x 1/4 | 3 x 3 x 1/4 | 3 x 3 x 5/16 | 3 x 3 x 3/8 | 1-1/2 x 1-1/2 x 1/4 | 4 x 4 x 1/2 | | | |
| | | | | | | | | | | | | | |
| | ADAPTER | MPA* | MPA* | D201 | MPA* | D206 | MPA* | MPA* | MPA* | MPA* | | | D296 |

RETROFIT **master flash**®

Instructions for Silicone Master Flash High Temp Hose Clamp

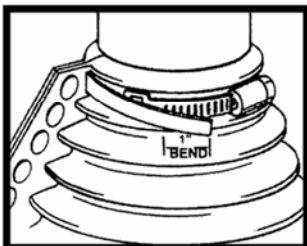
STEP 1



WRAPPED ONCE AROUND

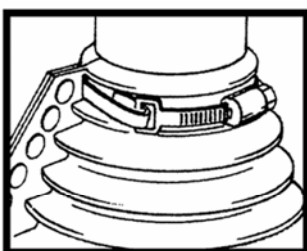
Insert end of rack into housing and turn screw just enough to engage rack. Be sure words "THIS SIDE UP" on rack are facing operator

STEP 2



Bend end of band toward underside to form hook and insert in band slot on housing. Wrap the assembly snugly around object and at point ONE INCH BEYOND first serration, cut, then bend a 1" hook toward underside of band.

STEP 3



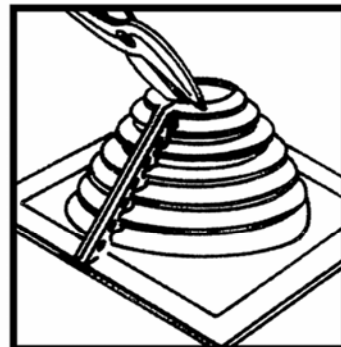
Insert hook into other band slot, and flatten with thumb forming clamp. Tighten screw with screwdriver to desired tension. Clamp is complete.

WRAPPED TWICE AROUND

(Wrapping TWICE around gives greater strength. For twice around, wrap band around object same as step #2 and insert end of band again through same housing slot and wrap band snugly around second time. Measure and cut same as step #2. Flatten the last hook with thumb, check alignment of the two bands and tighten screw with screwdriver to desired tension. Clamp is complete.)

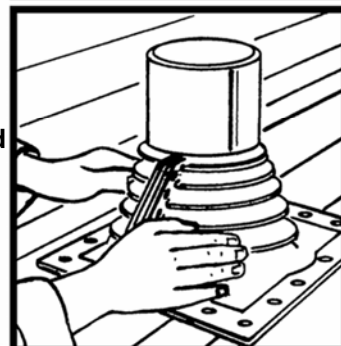
Select & Trim

Choose appropriate Retro Fit. If necessary trim opening to pipe diameter.



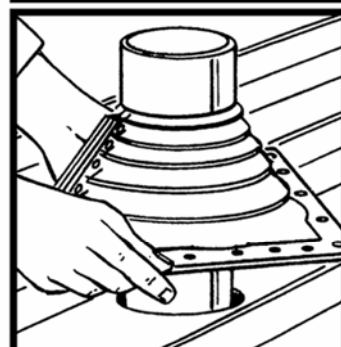
Wrap

Wrap Retro-Fit around pipe and install all snap rivets to seal flange.



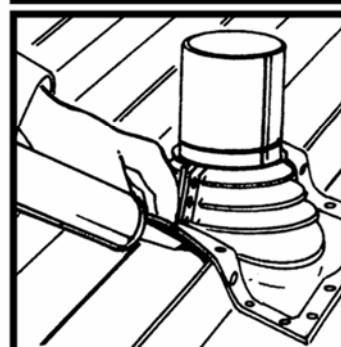
Form

Press Master Flash down, bending it to conform to roof profile or roof irregularities. A blunt tool will help press flashing into tight roof angles.



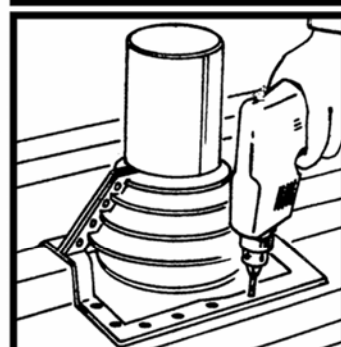
Seal

Apply silicone sealant between base and roof.



Fasten

Use fasteners to complete sealing. For UPC installation, fastener spacing may not exceed 1 1/2" (38 mm).



Install Cable Tie

Install supplied cable tie at uppermost part of Retro-Fit and apply sealant to any gaps.

